



PROLiNK DS-3301 Smart IR Controller Installation Guide

[Home](#) » [PROLiNK](#) » PROLiNK DS-3301 Smart IR Controller Installation Guide 

Contents

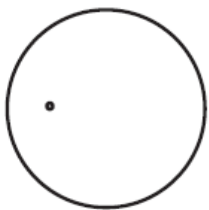
- [1 PROLiNK DS-3301 Smart IR Controller](#)
- [2 Package Contents](#)
- [3 Overview](#)
- [4 Installation](#)
- [5 Functions](#)
- [6 FAQ](#)
- [7 Documents / Resources](#)
 - [7.1 References](#)
- [8 Related Posts](#)



PROLiNK DS-3301 Smart IR Controller



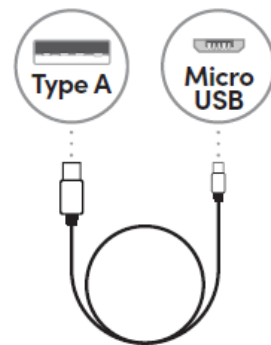
Package Contents



x 1



x 1



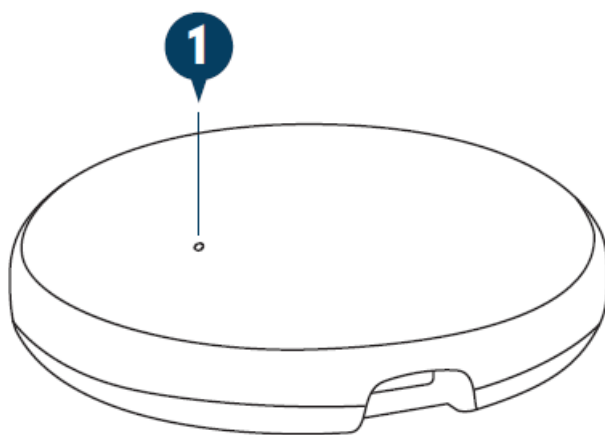
x 1

Note:

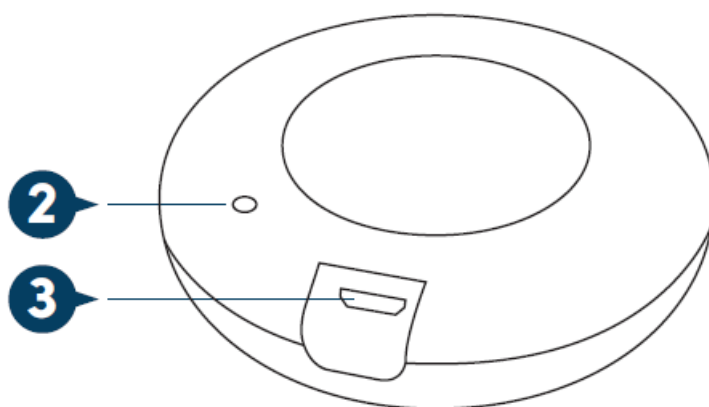
1. The illustration in this document may appear different from actual product.
2. If any of the stated items above are not included in your package, please consult your reseller immediately

Overview

Front View



Bottom View



Interface and Buttons

1. Status LED indicator
2. Reset Button
3. Micro USB input

LED Status

Reset Button

Installation

Preparation

- 1. Place the Smart IR Controller and Phone within three feet of the router.

Note:

- Make sure the phone is connected to the router through 2.4GHz Wireless network.
- Smart IR Controller is operating only at 2.4GHz Wireless N standard.
- Download, install and create an account on Prolink mEzee App. Scan below QR code to download from Google Store or Apple App Store. Alternatively, search for “mEzee”.

For Google Assistant / Amazon Alexa users:

Step 1. Complete the steps in this Quick Installation Guide

Step 2. Follow the setup instruction available from

<https://prolink2u.com/smart-home/ir-controller/ds-3301/download/>



mEzee



QIG

Setting up the Smart IR Controller

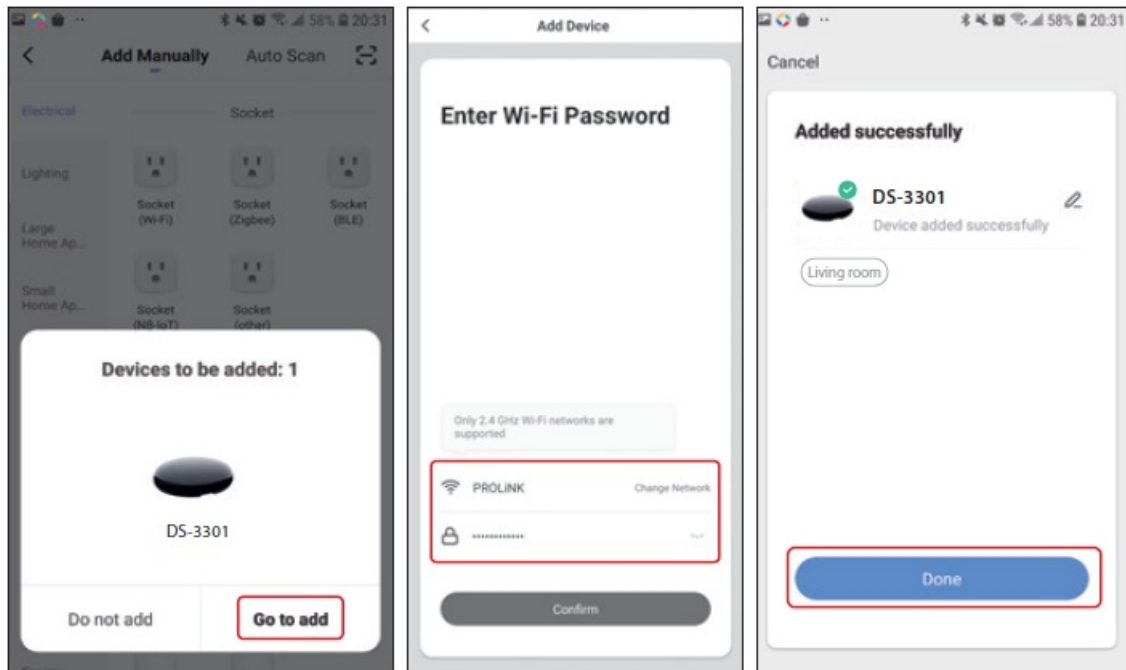
1. Plug the Smart IR Controller device to a electricity source with output rating DC 5V, 1A. Make sure the status LED is flashing rapidly.
2. Launch the mEzee App and login with your account.
3. Tap “Add Device” or “+” on the top right-hand corner.
4. Select “Universal Remote Control” to add Smart IR Controller.
5. Ensure that the Bluetooth function on your mobile device is switched on and proceed with Method A: Auto Add Configuration or Method B: AP Mode Configuration.



Method A: Auto Add Configuration

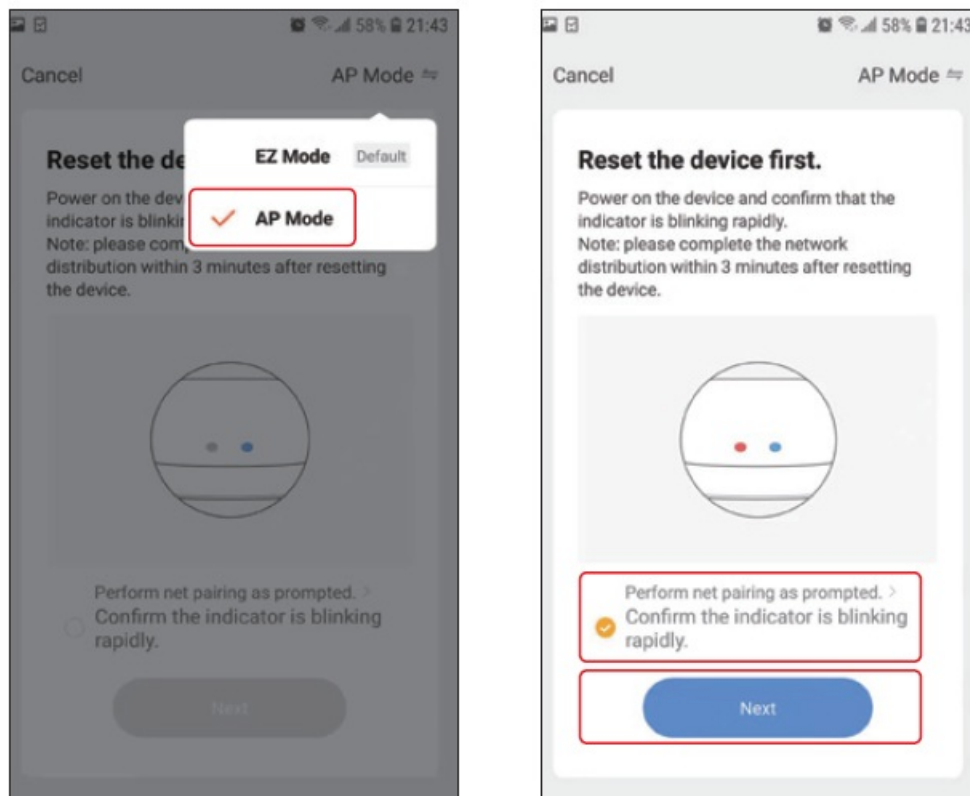
1. Tap on Add Device or + from the main screen. You will receive a pop-up that shows Device to be added.
2. Click Go to add.

3. Select your Wi-Fi name, and enter the Wi-Fi password, IR Controller will connect to the network automatically.
4. Once connected, proceed to name this device for easy reference and tap "Done".



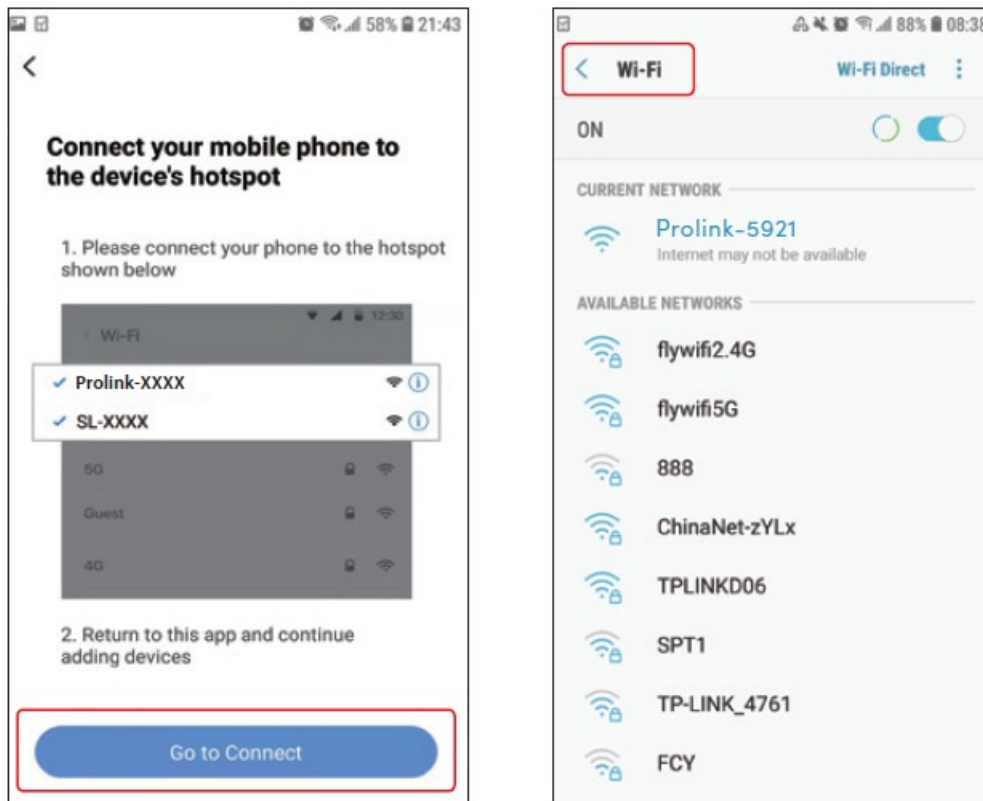
Method B: AP Mode Configuration

1. Toggle the top right-hand option to "AP Mode" if it shows otherwise.
2. Confirm that the LED indicator is blinking fast, otherwise hold the reset button for about 5 secs till the indicator blinks fast.
3. Check the tickbox and tap "Next".

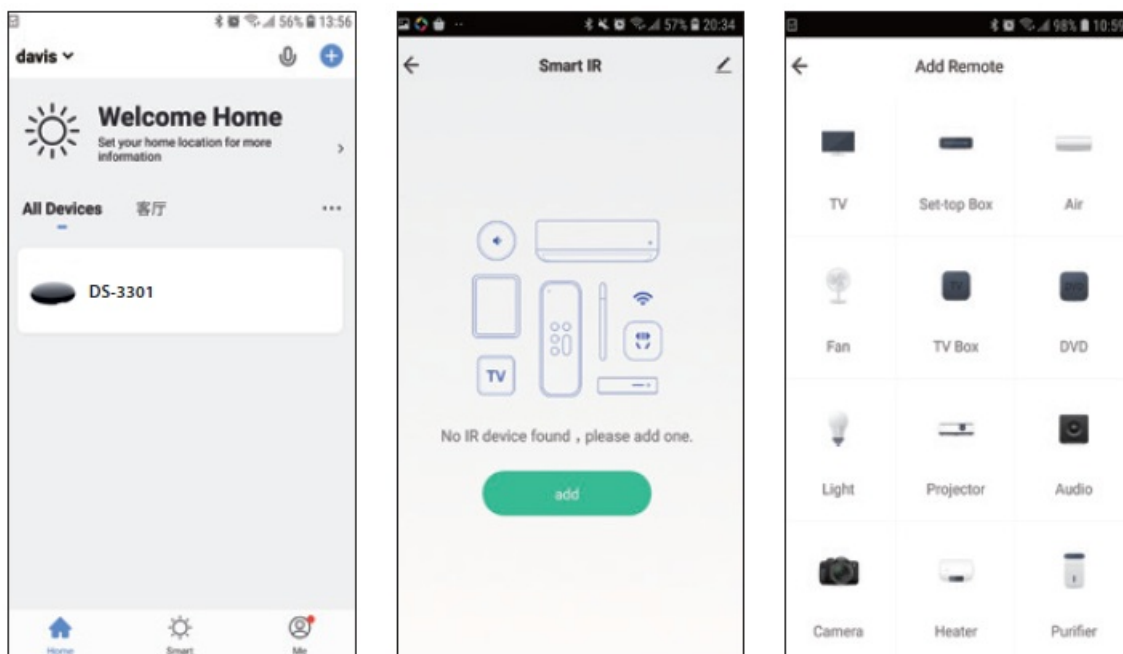


Tap "Go to Connect" and connect your mobile phone

“Prolink-XXXX” or “SmartLife-XXXX” SSID. Then return back to the App



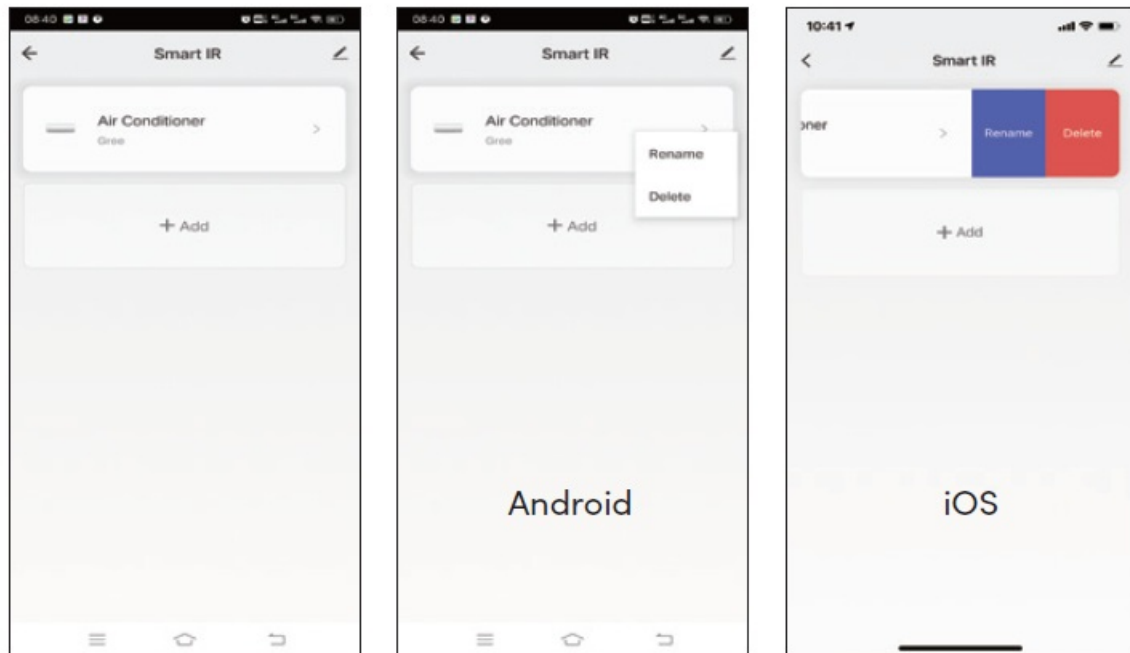
In the Home page, tap on Smart IR, followed by Add. Select the device type you would like to connect and click Quick Match or Manual Mode. To ensure device is connected successfully, please match at least 3 buttons to check if the device reacts properly



Renaming The Devices

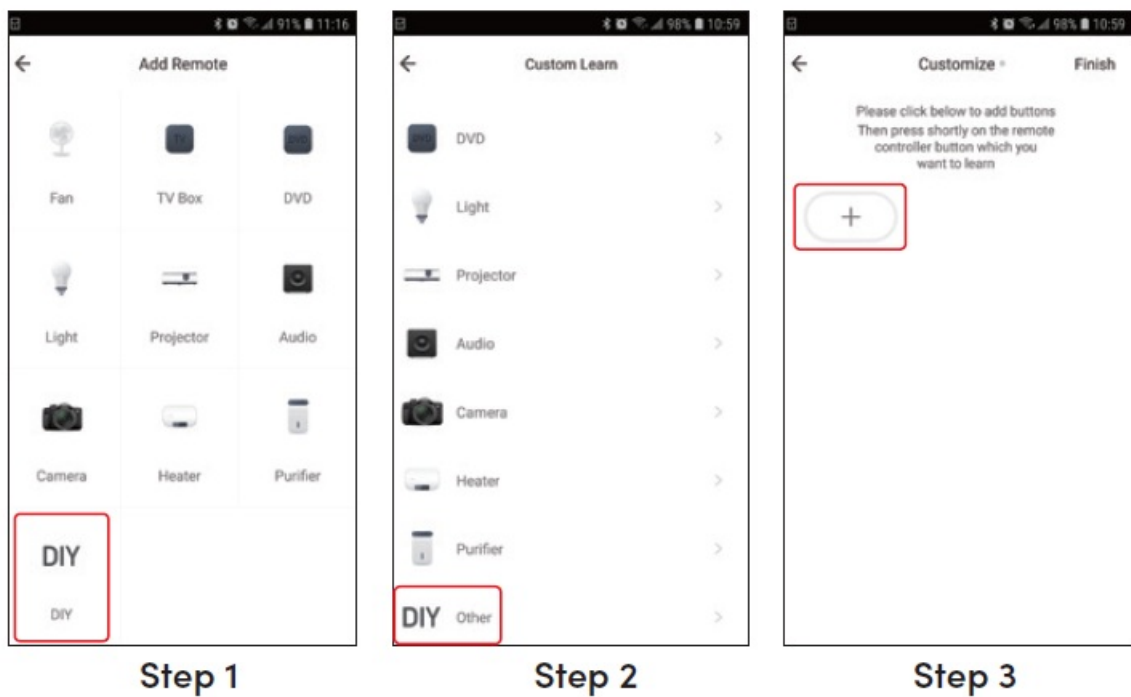
After adding successfully, use the following steps to rename the device to your preference:

- For Android devices, tap and hold the device name until a “Rename” pop-up screen appears.
- For iOS devices, slide the device name to the left and tap “Rename”.

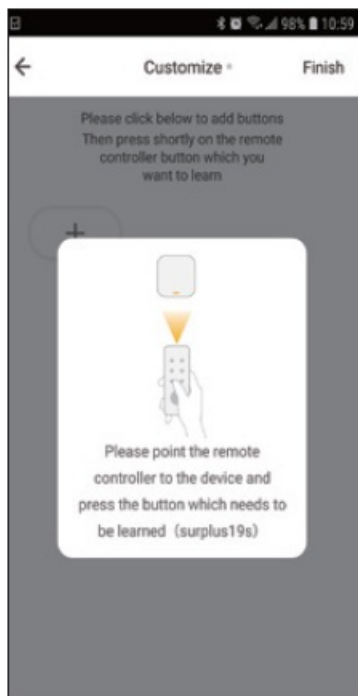


DIY Mode

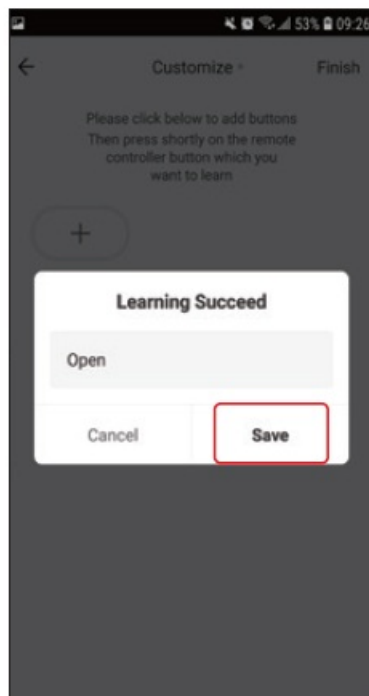
1. For devices that are not listed, add and customize your preferred functions with DS-3301's "Custom Learn" feature. Select "DIY", followed by "+" to start adding new control functions to the IR Controller



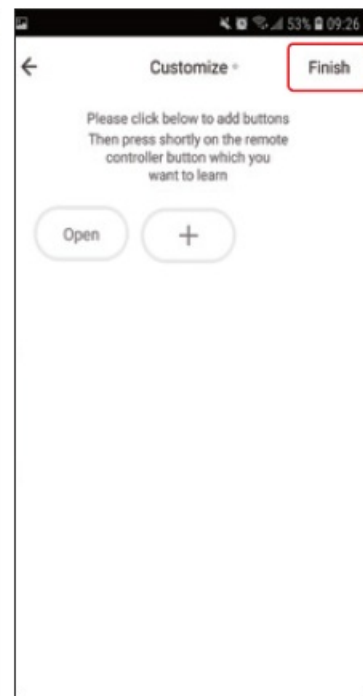
2. Point your device's physical remote control to the IR controller and press the control buttons you want the IR controller to learn.
3. If successful, a pop-up screen will prompt you to save the new control



Step 4



Step 5

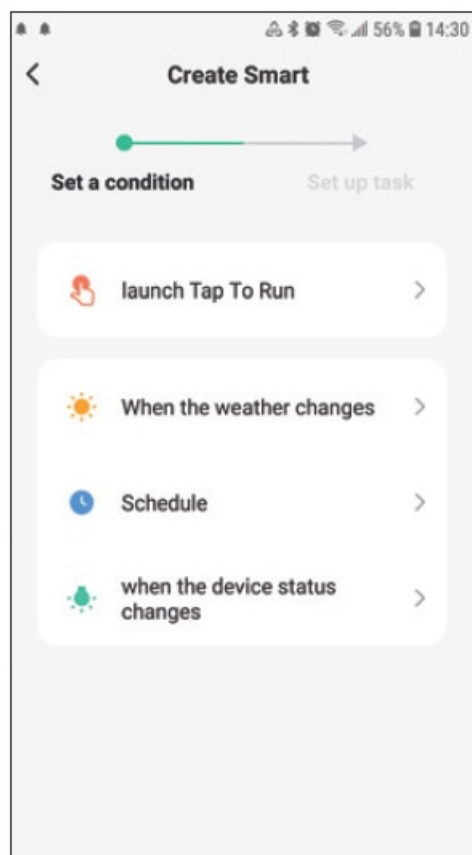
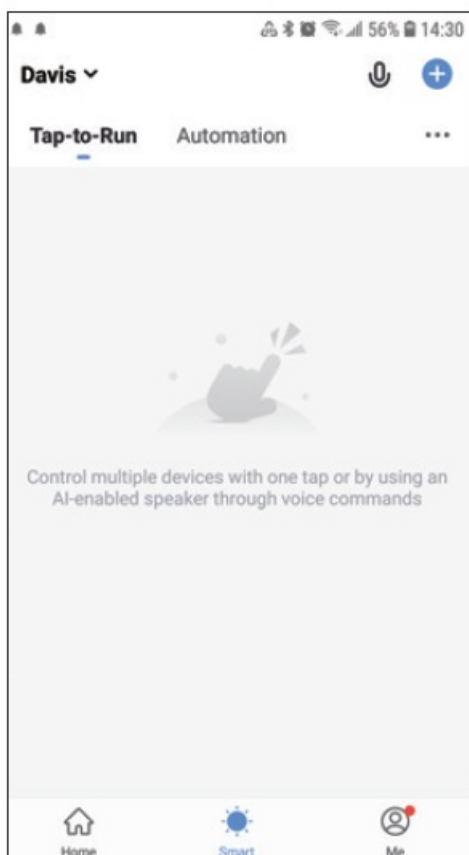


Step 6

Functions

Customize Smart Scenarios

In the Smart page, tap on + on the upper right hand corner to set up conditions and tasks.

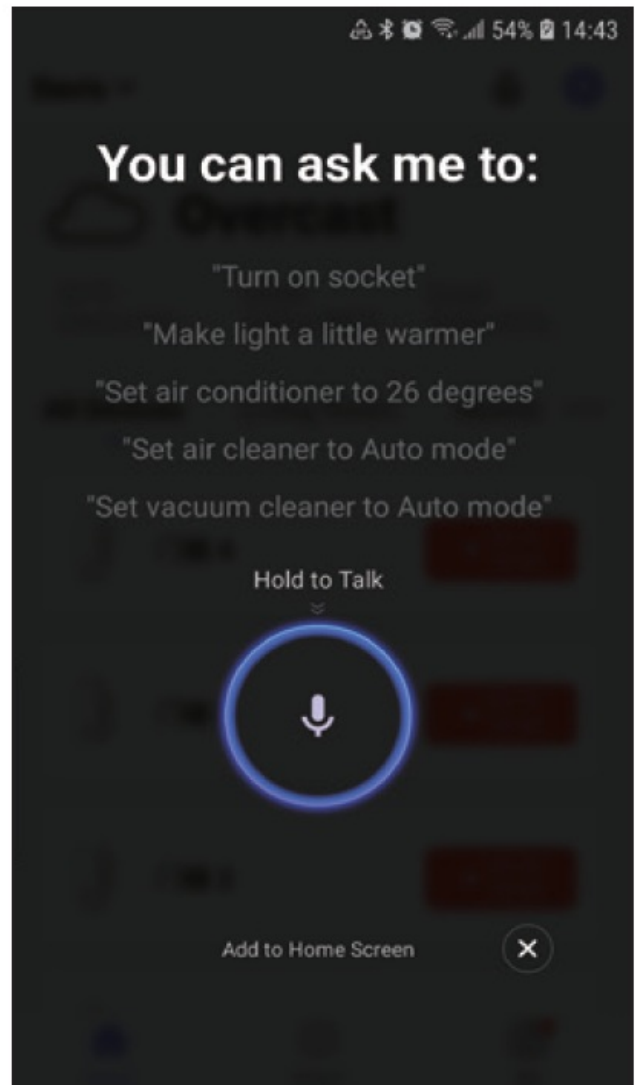
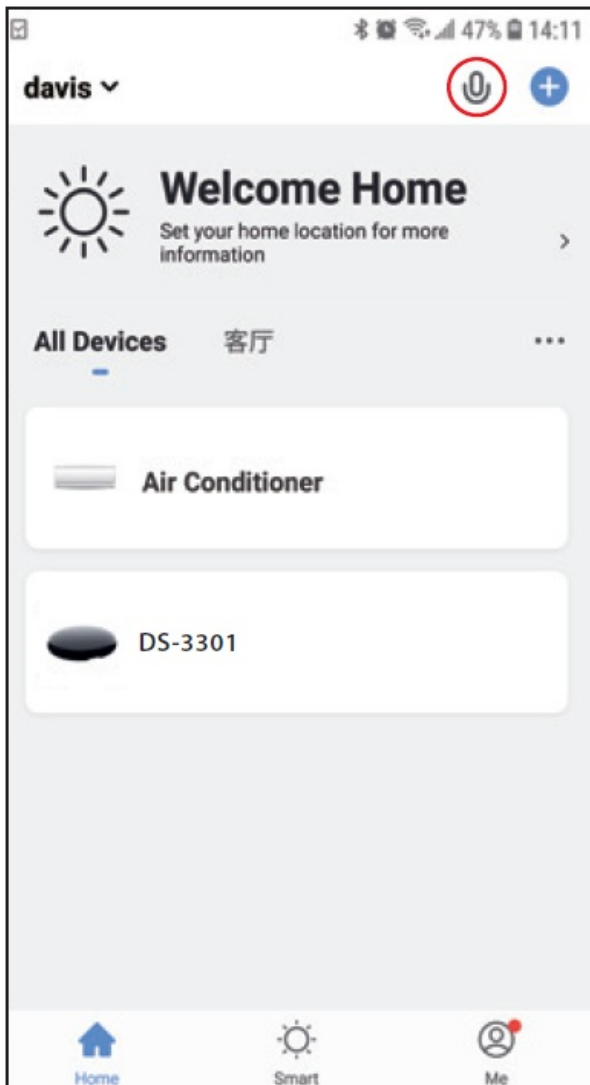


Remote control & Voice control

All-in-one integration with the mEzee mobile app – control any of your IR devices anytime, anywhere. To activate

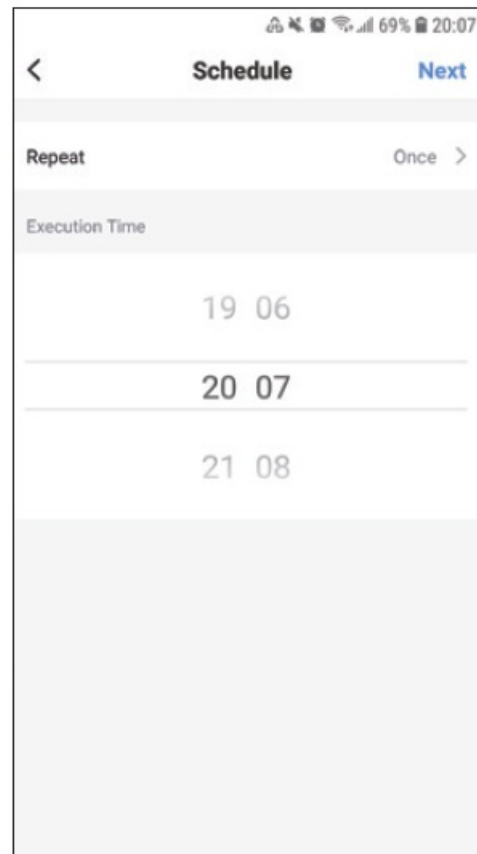
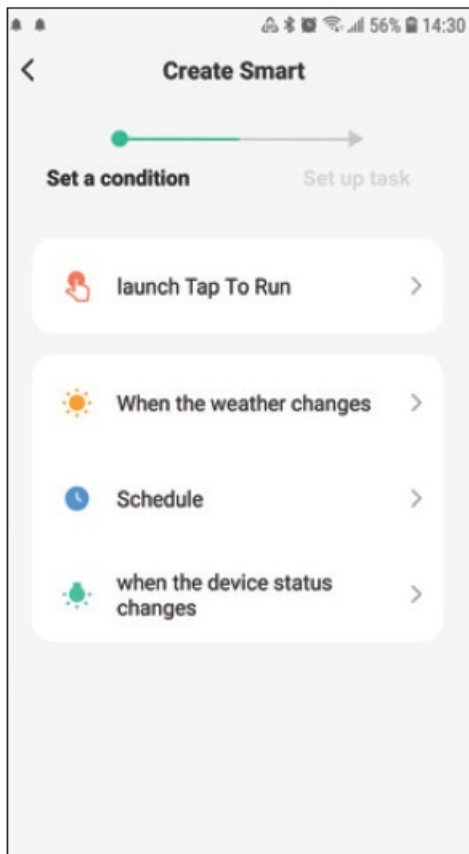


Voice Commands, press and hold the “ ” icon, then say out the control commands for each specific device.



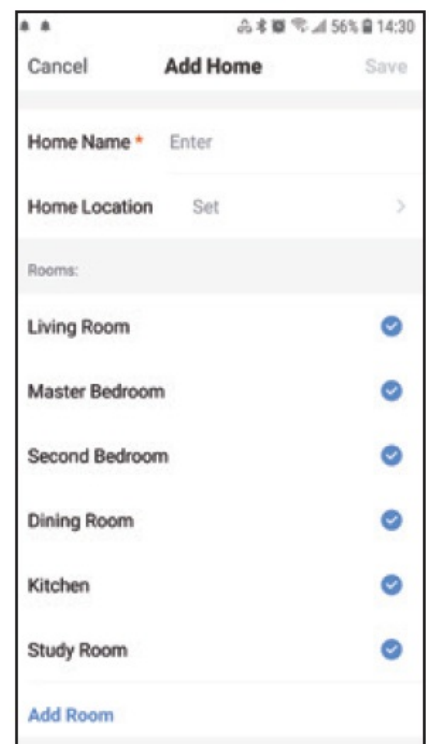
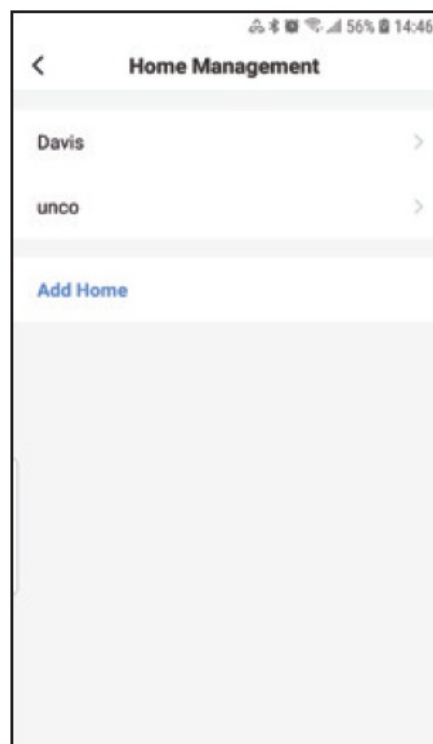
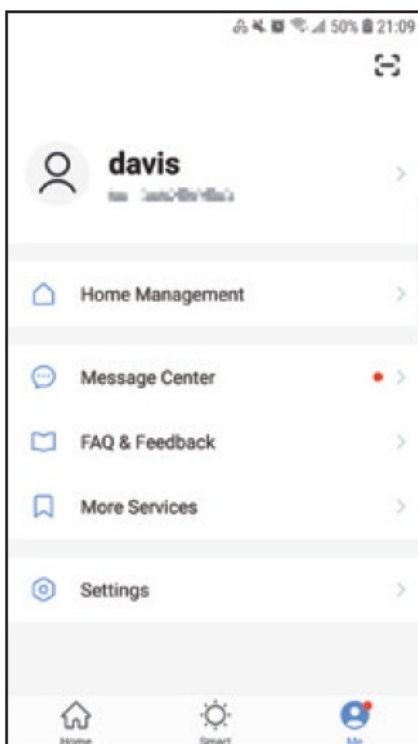
Schedule Devices

Set Power On/Off timings for any IR devices – in the Smart page, select Tap to Run or Automation, followed by + and Schedule.



Share Devices

Give your family members access to control the IR devices – in the Me page, select Home Management, followed by Add Home and customize accordingly



Third-party Voice Control

Works with Amazon Alexa, Apple Siri and Google Assistant

FAQ

1. What devices can be controlled with IR Remote Controller?

You can control TV, Air-conditioner, Fan, DVD, TV box, Light, Set-top box, Projector, Audio, Camera, Water Heater, Air Purifier, etc (Only for devices with IR (Infra-Red) base).

2. Can I control devices through 2G/3G/4G network?

Both IR Controller and mobile device are required to share the same Wi-Fi network when setting up the IR Controller. After configuration, you can control devices through 2G/3G/ 4G network

3. What should I do if I cannot control the device with the IR Remote Controller?

Make sure your mobile device and the IR Controller is close and connected to the same network, ensure the IR Controller is always charged and switched on

4. What should I do when the device configuration process fail?

1. Check whether IR remote is switched on.
2. Check whether your mobile phone is connected to a 2.4GHz Wi-Fi network.
3. Check your network connectivity, make sure the router is working properly.
4. Make sure the Wi-Fi password entered is correct.

5. Can the IR controller penetrate walls?

IR connectivity can not penetrate walls, so make sure there is no obstacles between IR Controller and the IR devices.

6. What should we do when we are unable to use IR remote to control device?

Please check the following:

1. IR remote network in good condition (On the mEzee app's remote control panel, click on any function to see if the IR Controller's LED indicator light flashes. If it does, the IR controller is connected and working well).
2. There are no obstacles or barriers between the IR remote and the device.
3. The factory remote control of electric device is IR-enabled. (Cover the top of the IR remote with hand or any objects, then press any keys of the remote control, if the device does not response, it is IR based. Otherwise, it is Bluetooth or RF based remote control.

Worldwide Customer Care Centers

INDONESIA Office

PT PROLINK INTIDATA NUSANTARA

- **Walk-In** : Jl. Cideng Barat No. 79, Jakarta Pusat 10150, Indonesia.
- **Telephone** : +62 21 3483 1777
- **Email Support** : support.id@prolink2u.com

MALAYSIA Office

FIDA SYSTEMS (M) SDN BHD

- **Walk-In** : 29 Jalan USJ 1/31, 47600 Subang Jaya, Selangor Darul Ehsan, Malaysia.

- **Telephone** : +60 3 8024 9151
- **Email Support** : support.my@prolink2u.com

SINGAPORE Office

FIDA INTERNATIONAL (S) PTE LTD

- **Walk-In** : Block 16 Kallang Place #06-02, Kallang Basin Industrial Estate, Singapore 339156.
- **Telephone** : +65 6357 0668
- **Email Support** : support@prolink2u.com

Technical Support Hotline


- **INDONESIA** : +62 21 3483 1717
- **MALAYSIA** : +60 3 8023 9151
- **SINGAPORE** : +65 6357 0666

Note: Closed on Saturdays, Sundays and local/regional Public Holidays

Register online for your Product Warranty at www.prolink2u.com

Prolink is a registered trademark of Fida International (S) Pte Ltd. Other brands and product names are trademarks or registered trademarks of their respective holders. Product images are purely for illustrative purposes and may defer from the actual product. Specifications are subjected to changes without prior notice. Copyright © 2021 Fida International (S) Pte Ltd.

Documents / Resources

	<p>PROLiNK DS-3301 Smart IR Controller [pdf] Installation Guide DS-3301 Smart IR Controller, DS-3301, Smart IR Controller, IR Controller, Smart Controller, Controller</p>
---	--

References

- [Home | Prolink](#)
- [DS-3301 | Prolink](#)