



PROLED WiFi Smart Bulb User Manual

[Home](#) » [PROLED](#) » PROLED WiFi Smart Bulb User Manual 

Contents

- [1 PROLED WiFi Smart Bulb](#)
- [2 IMPORTANT CAUTIONS](#)
- [3 APP DOWNLOAD AND REGISTER](#)
- [4 PAIR BULBS AND PHONE](#)
- [5 SETTING BULBS CONTROLLED](#)
- [6 TECHNICAL PARAMETERS](#)
- [7 Documents / Resources](#)
- [8 Related Posts](#)

PROLED

PROLED WiFi Smart Bulb



IMPORTANT CAUTIONS

1. Indoor use only, do not expose the bulb to water or moisture;
2. Do not expose to flammable sources, liquids or gases;
3. Do not open the equipment and do not modify the unit;
4. Make sure that the available voltage is between 120/230V, 60/50Hz;
5. The Bulb is not suitable for use with dimmers;
6. Do not switch the bulb on and off in short intervals, as this will reduce the bulb's life.
7. If the bulb is dropped or damaged, disconnect the mains power supply immediately and have qualified engineer inspect the equipment before operating again.

RESET BULBS TO FACTORY MODE

Step 1. Power off the bulbs for 10 seconds. Step 2. Turn on bulbs– turn off– turn on–turn off–turn on, then bulbs will rapidly flash.

APP DOWNLOAD AND REGISTER

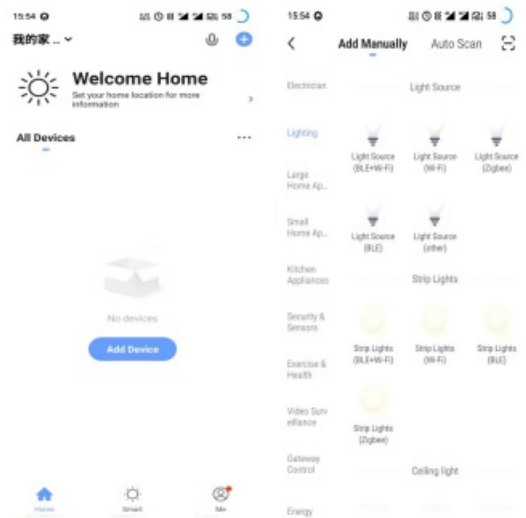
“Download the APP “Smart Life” from APP Store(for IOS) and Google play store(for Android), and register with phone number/email/Social Media Account;”



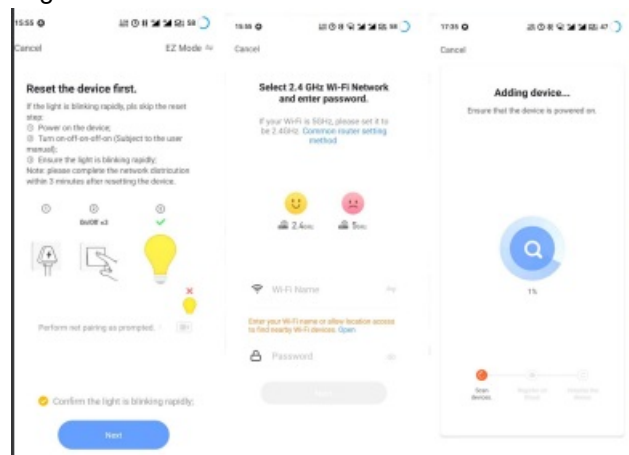
PAIR BULBS AND PHONE

“Step 1. Power your bulbs and turn on the wall switches, bulbs will blink rapidly(EZ Factory Mode) or slowly blink(AP Factory mode), default is blinks rapidly(EZ factory mode); PS: You can switch the Bulbs EZ factory mode(blinks rapidly) and AP factory mode(slowly blink) by reset bulbs;”

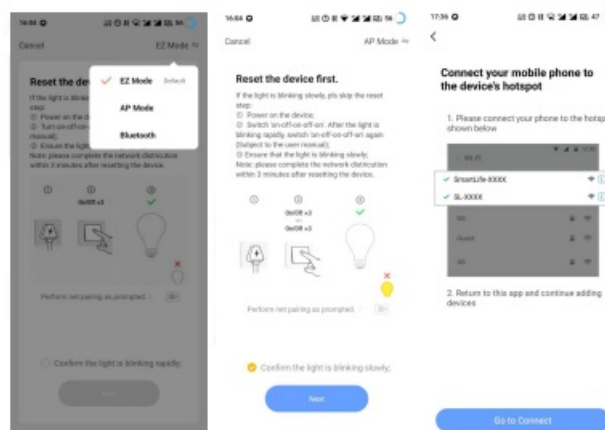
Step 2. Login APP– Press “Add Device”or”+”button– Select “Lighting”–Select “Light Source(BLE+Wi-Fi



Step 3-1. EZ factory mode add devices: Tick "Confirm the light is blinking rapidly"—Input your Wi-Fi Name and Password—Waiting for Connecting

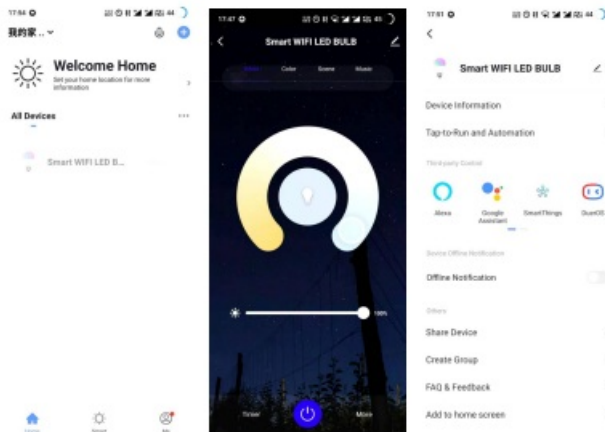


Step 3-2. AP factory mode add devices: Press "XXMode" In the top right-hand corner can change the mode—"Confirm the light is blinking slowly"—"Enter Wifi Password"—Open WLAN Setting—Select the "SmartLife-XXX"—Press "Connect Now" button;



SETTING BULBS CONTROLLED


BY ALEXA/GOOGLE HOME APP "Home"— Enter bulb control interface—Press "⌵" button In the top right-hand corner—Press "AmazonAlexa" or "Google Assistant"—following the instructions;



TECHNICAL PARAMETERS

- Product Name: Wi-Fi Smart Bulb Light Voltage:120/230V,60/50Hz
- Power: 9W
- Size: $\phi 70 \times 139 \text{mm}$
- Color:RGB+W(2700K/3000K/4000K/6000K) Wireless Type: Wi-Fi 2.4GHz
- Wireless standard: IEEE 802.11 b/g/n

Documents / Resources

	PROLED WiFi Smart Bulb [pdf] User Manual WiFi Smart Bulb, Smart Bulb
---	---