

PROLED®

PROLED
USMTLDS3020W
Smart Track Lights
Dual Sensor



PROLED USMTLDS3020W Smart Track Lights Dual Sensor Instruction Manual

[Home](#) » [PROLED](#) » PROLED USMTLDS3020W Smart Track Lights Dual Sensor Instruction Manual 

Contents

- 1 PROLED USMTLDS3020W Smart Track Lights Dual Sensor
- 2 Smart Series Instructions
- 3 Smart tracklight dual sensor
- 4 App Overview
- 5 Default Settings
- 6 Terminology
- 7 Sign Up and Login
- 8 Sub-administrator
- 9 Software update
- 10 Color Selection
- 11 Power Setting
- 12 Data:Operation
- 13 Switch and Wi-Fi Configuration
- 14 Comparison between Stores
- 15 Primary-Secondary setting
- 16 Scene setting
- 17 Instructions
- 18 Documents / Resources
 - 18.1 References
- 19 Related Posts

PROLED®



Smart Series Instructions

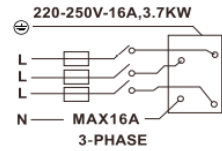
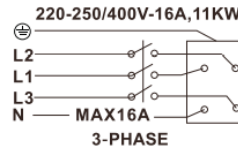
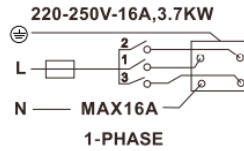
Smart Series is a smart retail lighting solution based on Artificial Intelligence (AI) and Internet of Things (IoT) technologies. Full-spectrum and high-saturation Smart Series analyze commodity information automatically with built-in sensors, and the light spectrum and saturation can be adjusted adaptively. All the lights connected with Bluetooth mesh, while communicating with AWS Cloud through Wi-Fi. Global e-commerce growth is the biggest challenge the traditional business faces. According to study, “Personalized shopping experience” and “Preview commodity in person before purchase” are the top reasons why shoppers still prefer brick-and-mortar stores. Smart Series retail lighting solution gives shoppers a new shopping experience in brick-and-mortar stores.



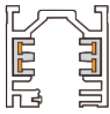
Smart tracklight dual sensor

Size	15W	30W
Model	SMTLDS1520B	SMTLDS3020B
	SMTLDS1520W	SMTLDS3020W
	SMTLDS1536B	SMTLDS3036B
	SMTLDS1536W	SMTLDS3036W
D	∅70	∅80
L1	135	160
L2	220	220
L3	200	225
W	45	45

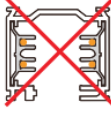
The track light is universal compatible.
It works with the following track systems:



Staff



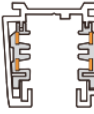
Eutrac



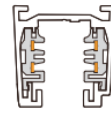
Global



Nuco



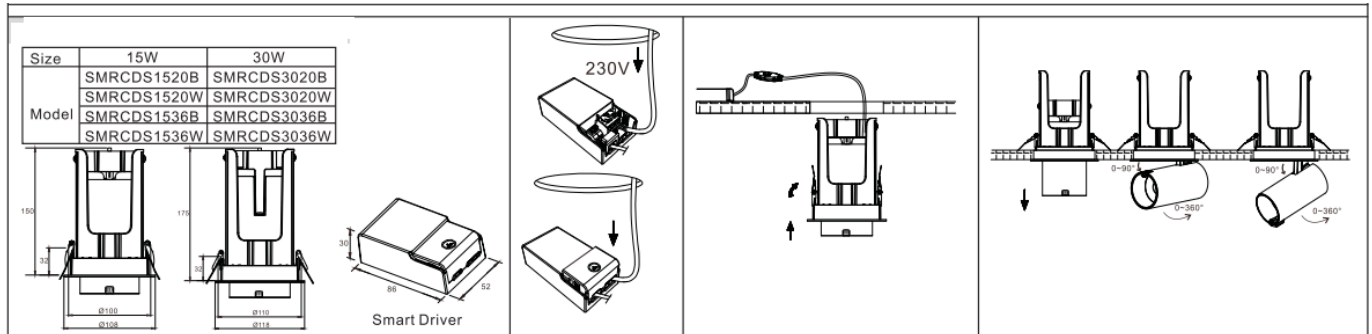
Nordic



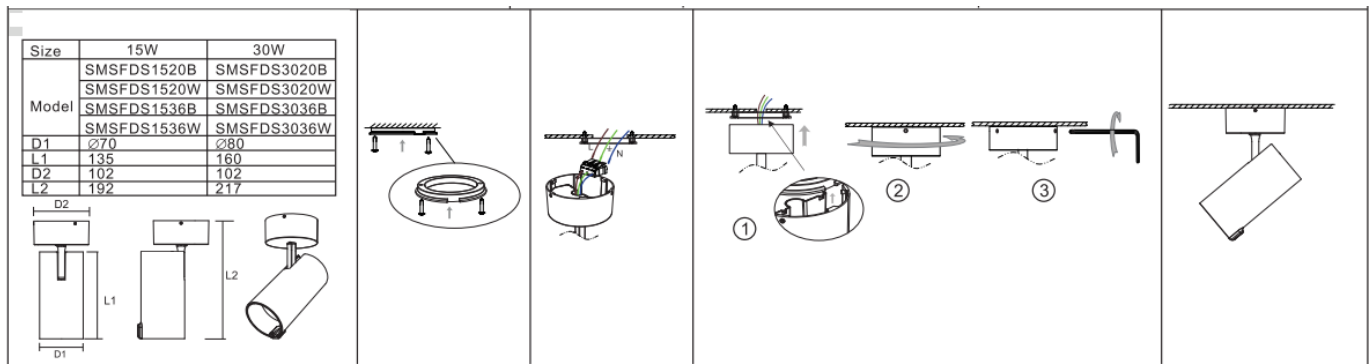
Ivela



Smart recessed dual sensor



Smart surface mounted dual sensor



App Overview

The App is designed to configure and set Smart Series over Bluetooth mesh, and the APP communicates with the cloud server via Wi-Fi router.

Functions	Description
Light On/Off	To switch ON or OFF
Light setting	Three ways of Light setting: Auto Mode(default), Take a picture, or Color Selection.
Auto Mode	Automatically provides the best CCT and color enhancement according to commodities detected by the built-in color sensor, default "ON". Set it "ON" or "OFF" in the App.
Energy saving setting	Not activated by default, desired brightness and waiting period can be preset
Brightness adjustment	To adjust the output brightness from 1% to 100%, default at 100%
Power Setting	To adjust the output power from 5W to maximum power of the spotlight.
Software update	To OTA (Over the Air) update the firmware (software) on the spotlights to the latest version
Group setting & Group control	To manage some spotlights in a same group and group control them ON/OFF, group light setting, and energy saving, auto mode, etc.
Primary-Secondary setting	Select a device to be the Primary light in a group, when the Primary light changes, the Secondary light will follow.
Settings reset	To reset the light to initial settings, and the light will be removed from APP.
Store management	To create a store or join a store
Data	To count the number of customers interested in the commodity.
Scene	Control multiple devices and groups to realize customized adjustment of color temperature and brightness.

Default Settings






Functions	Description
Auto Mode	default "ON".Time interval is 20 minutes by default.Use occasion is "Clothing & Accs" by default.
Energy saving setting	default "OFF"
Brightness adjustment	default at 100%
Power Setting	maximum power by default
Data collection	default "OFF"

Terminology

	Description
Auto Mode	Automatically provides the best CCT and color enhancement according to commodities detected by the built-in color sensor.
Energy saving setting	If no customer is detected within the set time, adjust the light to the set energy-saving brightness.
Take a picture	Take a picture of the target product and select an area on the photo then the light outputs recommended recipes.
Color Selection	User can tune color, saturation, color temperature, and brightness of the light.
Software update	To OTA (Over the Air) update the firmware (software) on the spotlights to the latest version.
Group setting	To manage some spotlights in a same group and group control them ON/OFF, group light setting, and energy saving, auto mode, etc.
Primary-Secondary setting	Select a device to be the Primary light in a group, when the Primary light changes, the Secondary light will follow.
Settings reset	To reset the light to initial settings, and the light will be removed from APP.
View commodity position	View the product image and make sure commodity is in the center of image by moving light or commodity.
View customer position	View the customer area and make sure the image coincides the area where customers most likely view the commodity by adjusting the rotatable sensor.
Sub-administrator	To facilitate the management of the store's lighting, the sub-administrator can obtain admin right to perform operations such as adding lamps and creating groups.
Secure admin right	Sub-administrators acquire and lock permissions to become administrators.
Commodity barcode	Scan the commodity barcode or type it manually or input the name of the commodity.This function associates the spotlight with commodity for data analysis.
WiFi Config	Data function requires Internet connection.(2.4GHz supported only)
Data	To count the number of customers interested in the commodity.
ALL stores	When an account is added to multiple stores, user can compare the popularity of different stores and the comparative data of hot-selling products.

Recommended Distance and Detection interval for Auto Mode

- For clothes, the recommended distance between Smart Tracklights tracklight and clothing is 0.8-2.5 meters, and 0.5-1.5 meters for bags. For commodities smaller than bags, recommend using APP "Take photo" or "Customization".
- To ensure the best lighting effect, please align luminaire's center beam spot on the center of commodity.
- Auto Mode detects commodity automatically every 20 minutes by default. Tap "Auto Mode" item to change the time interval. For normal use, recommend set it up by minutes, and for demo and test purpose by seconds.

Commodities	Recommended distance under Auto mode
<10cm 	Recommend using "Take photo" or "Customization"
10cm~20cm 	Recommend using "Take photo" or "Customization"
20cm~40cm 	0.5m~1.5m
40cm~100cm 	0.8m~2.5m
>100cm 	1.5m~8m

Download and Install App

Search "Unibright smart control" from App Store for iOS, or Google Play Store for Android Languages English, French, German and Dutch

App Compatibility

- iPhone: Requires iOS 13.0 or later

- iPad: Requires iPadOS 13.0 or later
- iPod touch: Requires iOS 13.0 or later
- Mac: Requires macOS 11.0 or later and Mac with the Apple M1 chip
- Android: V4.4 or later



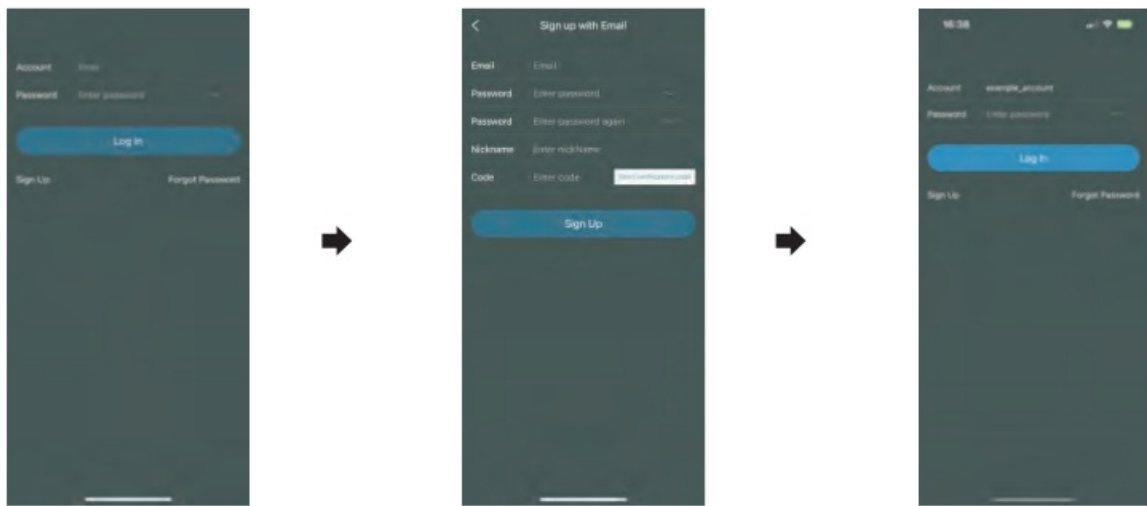
Product lifespan refers to lighting time when the luminous flux of 50% luminaires in a batch of the same luminaires reaches 70% of the initial luminous flux(L70B50) . The estimated product lifespan is based on the indoor ambient temperature of 25,good air circulation and working at rated voltage. *Color sensor recognizes the color of the illuminated object.The data Sensor will monitor and make statistics on the status of commercial passenger flow.

The leakage current(contact current or protective conductor current) of the circuit depends greatly on the conductor,such as the length of the conductor specification.In the field, the connection of power cord to conductor specification. In the field, the connection of the power cord to the luminaires ,and the arrangement of the power cord of the lamp also have a effect In some cases it is also referred to as the ground drain current.

1. Please be sure to cut off the power before operation.
2. Do not continue to use if the luminaire is damaged.
3. Luminaires should not be stored and used in corrosive environments or in environments containing hazardous substances such as sulfide,halides ,phthalates ,etc.
4. Luminaires should be installed outside the reach of human hands. Warning: The light source and parts of this luminaires are not replaceable. When the light source and parts reach the end of their life,the whole luminaires should be replaced.

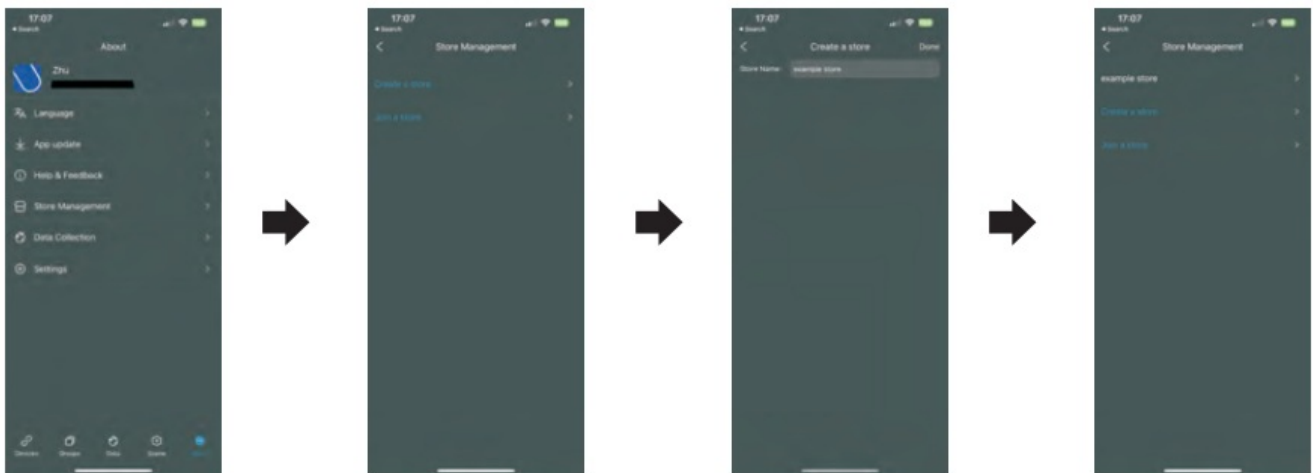
Sign Up and Login

1. Tap "Sign Up" to create your account and password.
2. Follow the instructions to complete "Sign Up" and get into "Login" page.
3. Use your email and password to log in.



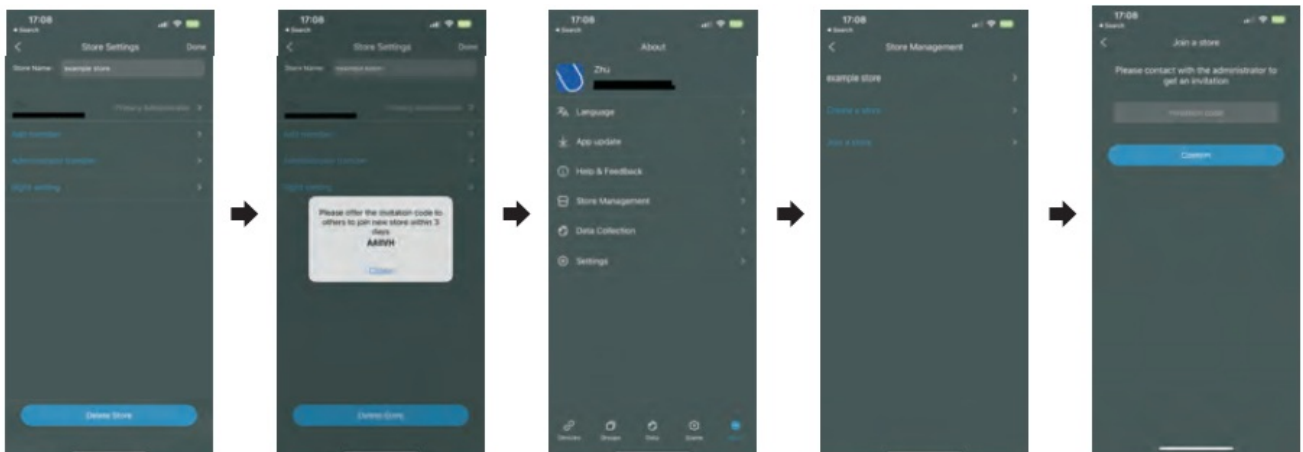
Create a Store

1. Create a store before adding any devices for first-time use.
2. Tap “About” and choose “Store Management” to create a store.
3. The administrator must create the store first, then invite other members to join.



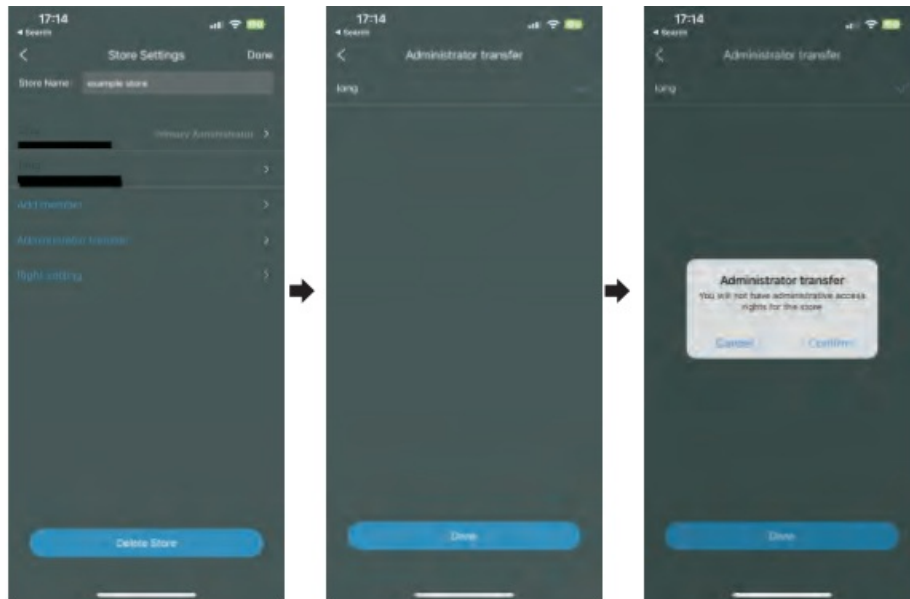
Share and Join a Store

1. For administrator, choose the store > tap “Add member” > share the invitation code.
2. To join a store, choose “Join a store” > Input the invitation code and confirm.
3. Note: except the administrator, other members do not have the right to add and set up devices or create groups.



Administrator transfer

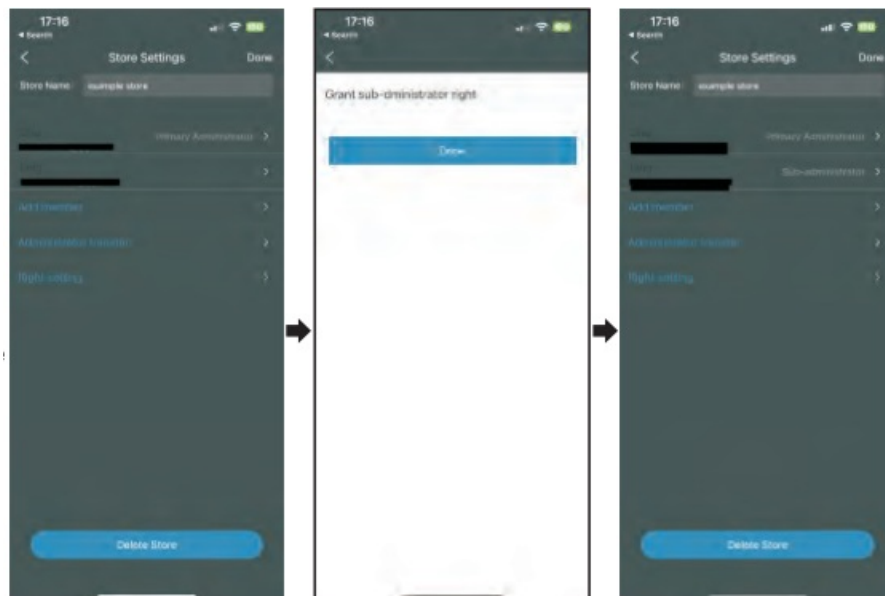
For administrator, choose the store > tap “Administrator transfer” > choose a member> Tap “Confirm”, and the administrator will become a common member.



Sub-administrator

To facilitate the management of lighting in a store, user can set up store members as subadministrators.

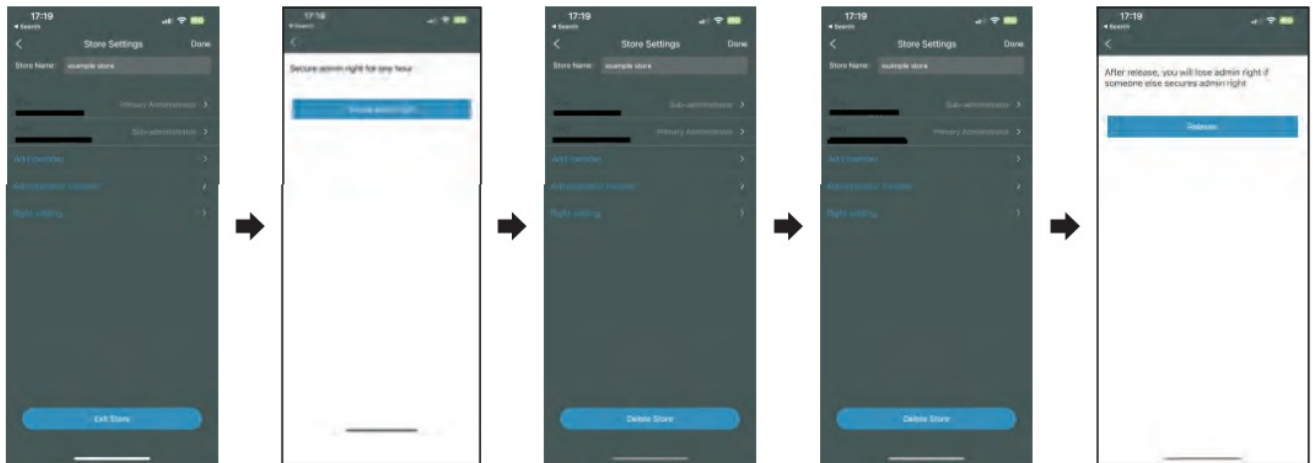
1. Tap a member in the Store Settings page.
2. Tap “Done” and the member will become a sub-administrator.



Sub-administrator gains admin right

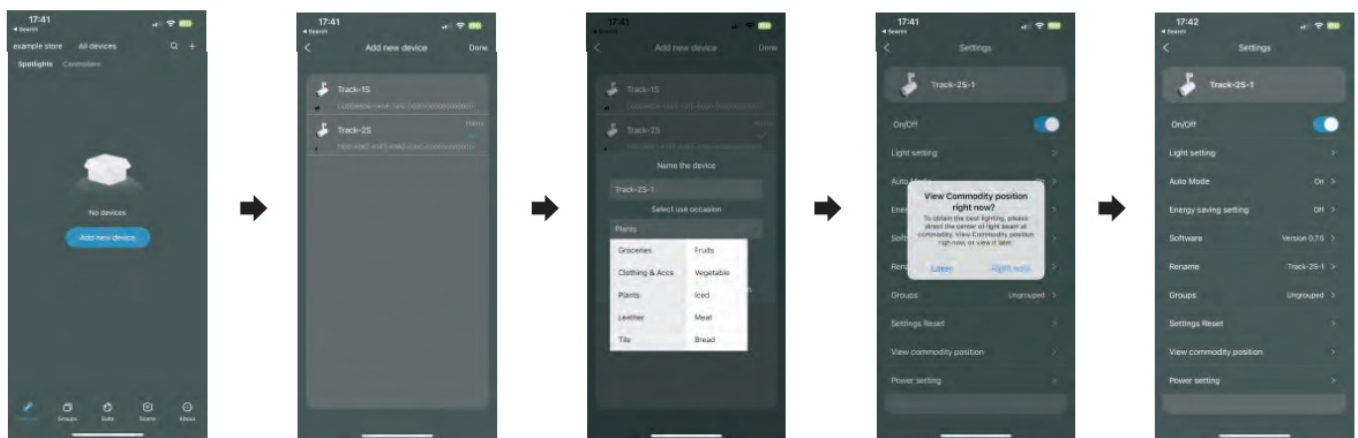
1. Sub-administrator logs in to the account and tap “Right setting” in the Store Settings page.
2. Tap “Secure admin right” and the subadministrator gains admin right. The original administrator loses admin right.
3. The sub-administrator secure admin right for one hour during which other sub-administrators cannot obtain admin right.

- During this time, the sub-administrator can release admin right, allowing other subadministrators to obtain admin right.



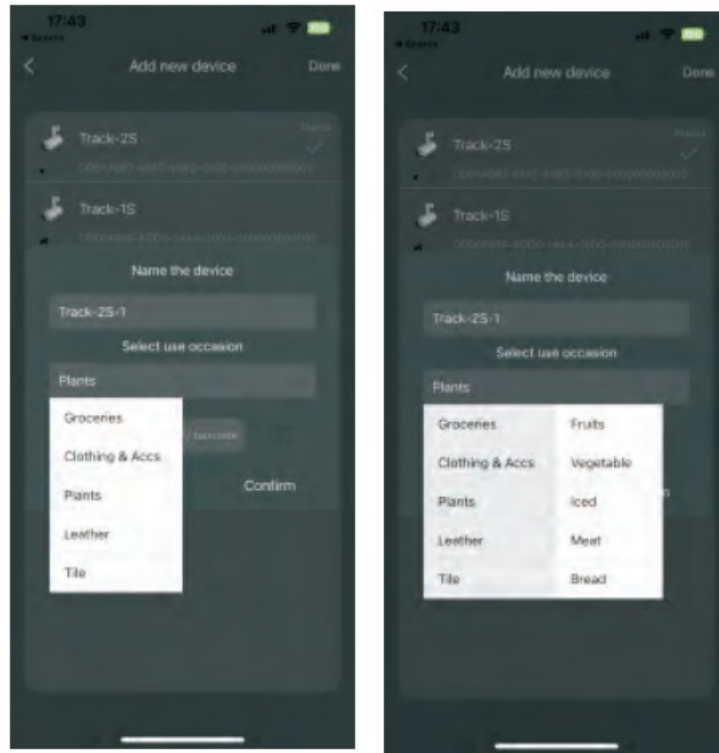
Add new devices

- Step 1: Tap “Add new device” or “+” on the top right of the App to view all spotlights within Bluetooth reach. Step 2: Choose device and Tap “Done”. The corresponding spotlight will flash 5 times, enter a name for the spotlight and select a use occasion. Step 3: Tap “Done”, App will show Settings page and pop up “View Commodity position right now” window. If “Software update” window pops up, please update the software first.



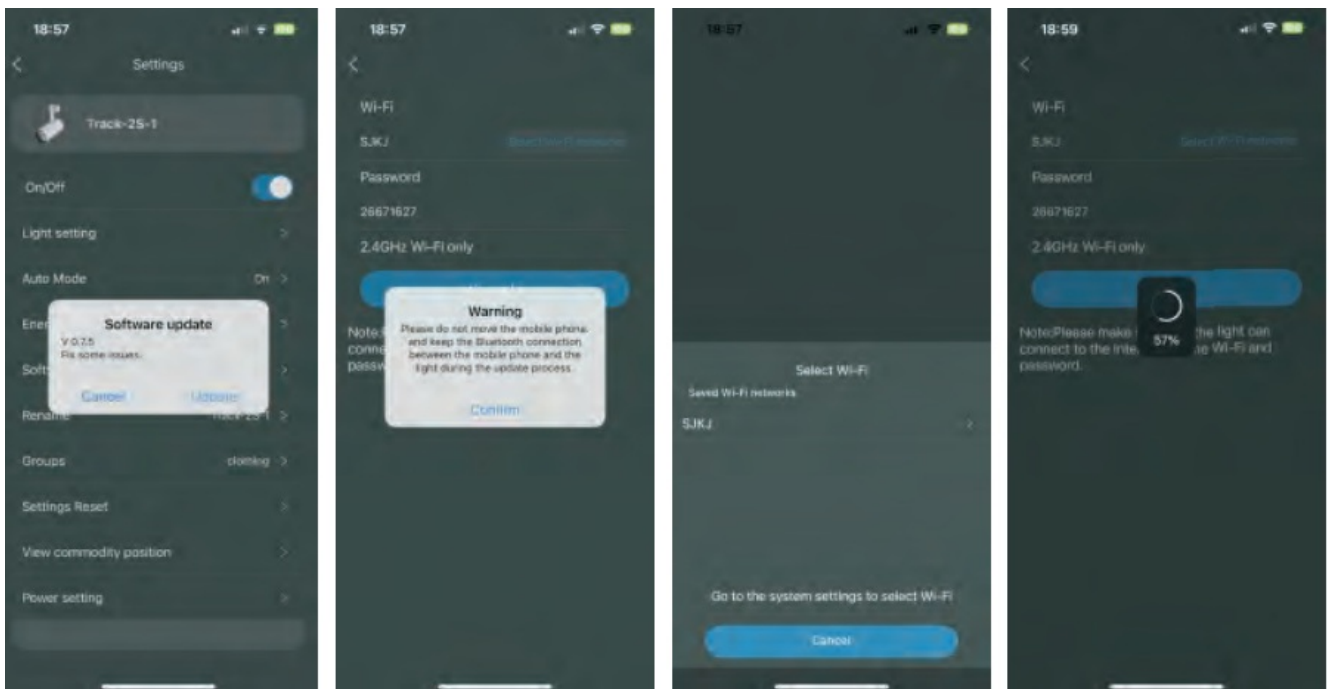
Select use occasion

- First-level use occasion has 10 categories: Groceries, Clothing & aces, Plants, Leather, Tile, Mineral, Artwork, Ceramics, Furniture and Others.
- Groceries has sublevel categories: Fruit, Vegetable, Iced(seafood), Meat, and Bread.
- If category not determined while setting up the light, choose “Others” first, then correct it later.
- Use occasion can be changed by tapping on “Auto Mode”.



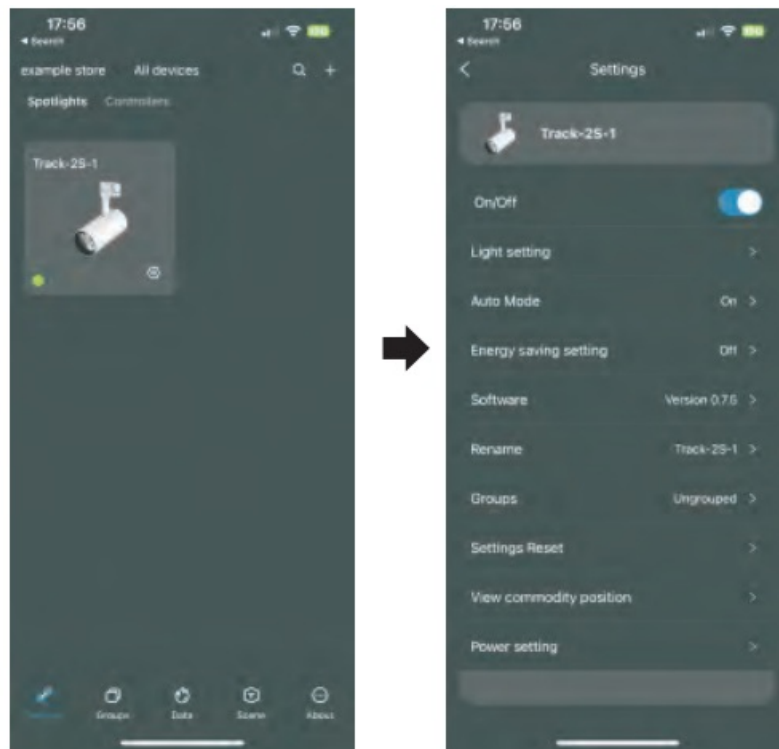
Software update

1. Tap “Update” on “Software update” popup box.
2. Choose your Wi-Fi and enter the password.(2.4GHz supported only)
3. Tap “Upgrade” to update the firmware to latest version for th is spotlight. Do not leave until the updating has been finished.



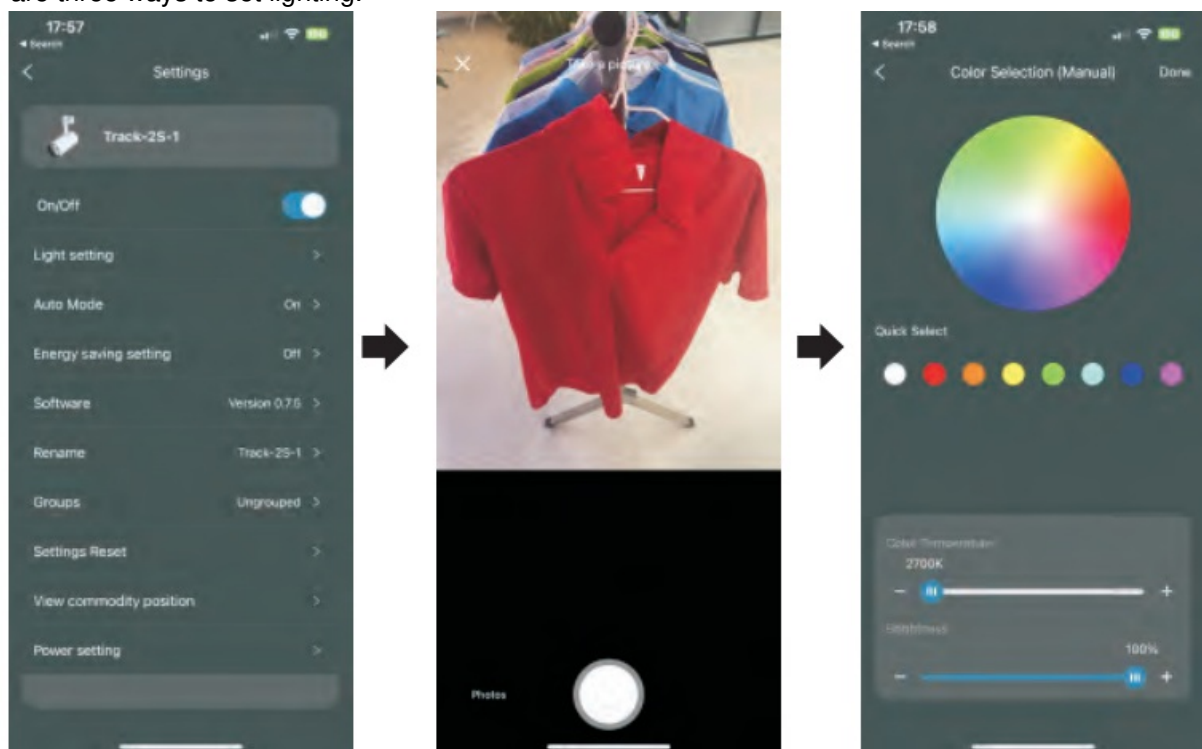
Settings page

Tap settings icon of the light on Devices page to get into Settings page.



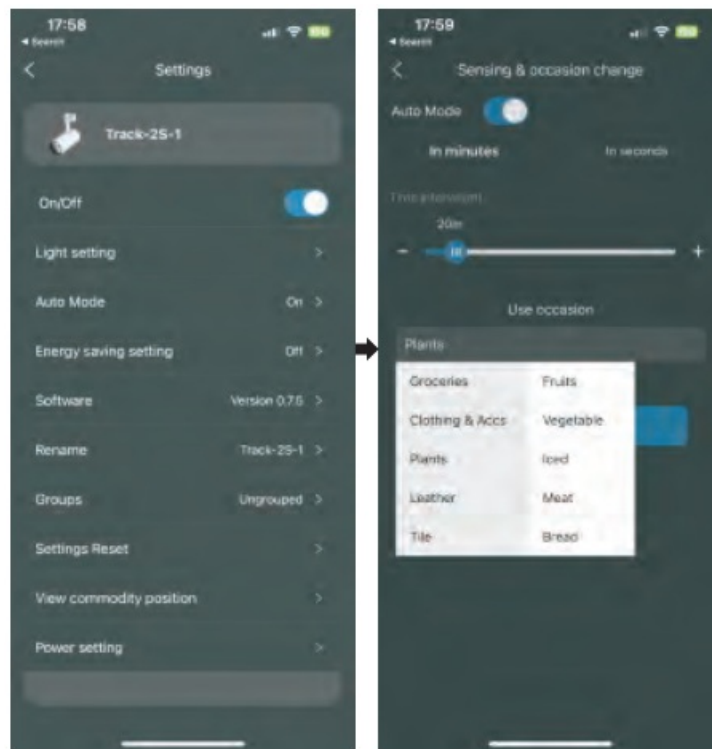
Light Setting

There are three ways to set lighting.



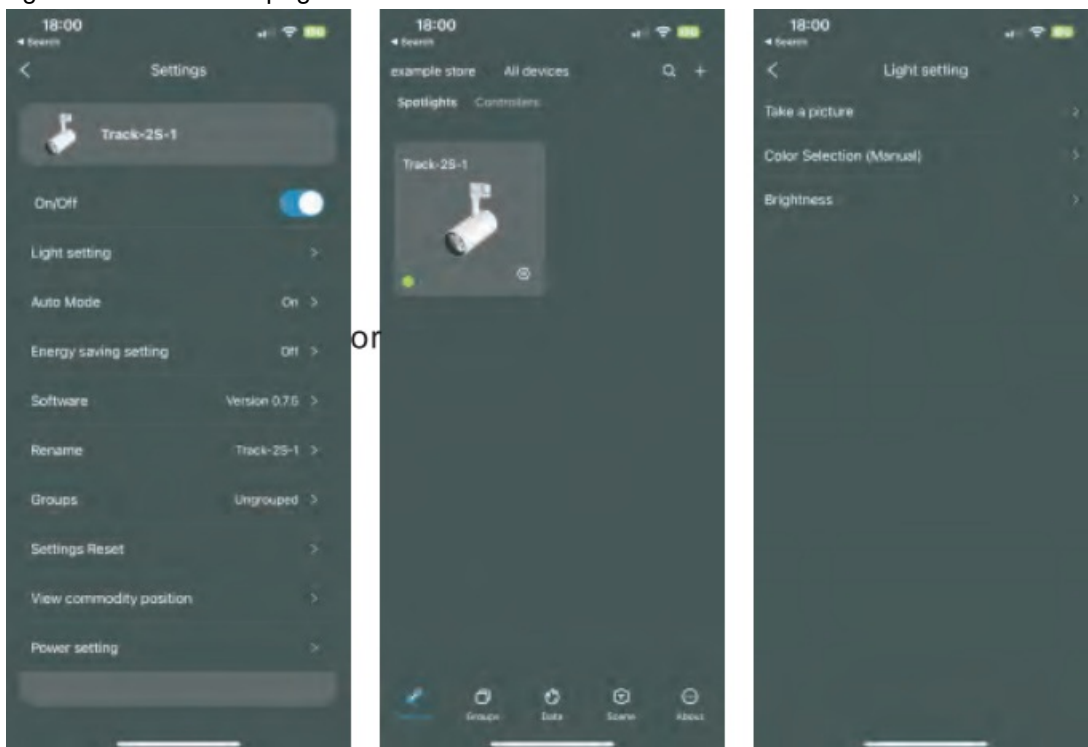
Light Setting: Auto Mode

1. Auto mode is on by default. The spotlight senses commodity information and tune the light automatically according to a professional formula library.
2. Using other light setting methods, like Take a picture or Color Selection, will turn Auto Mode off. Turn "Auto Mode" on in App if use Auto Mode again.
3. Sensor on spotlight senses commodity information every 20 minutes by default.
4. Under Auto mode, the sensor on the light will sense commodities information every 20 minutes and the use occasion is "Clothing and Aces" by default. Tap on "Auto Mode" item to time interval and use occasion change page. For normal use, recommend setting time interval by minutes, and "by Seconds" is for demo or test purpose.
5. If need to change use occasion, select a proper use occasion.



Select page

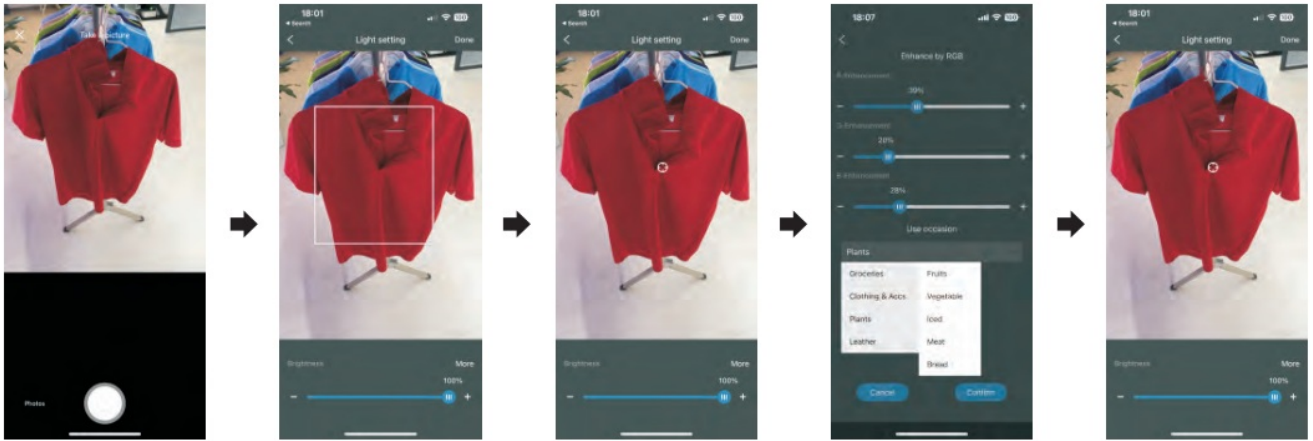
To use Take a picture or Colo Selection or Brightness Adjustment function, tap “Light setting” on Settings page, or tap the spotlight icon on Devices page.



Take a picture

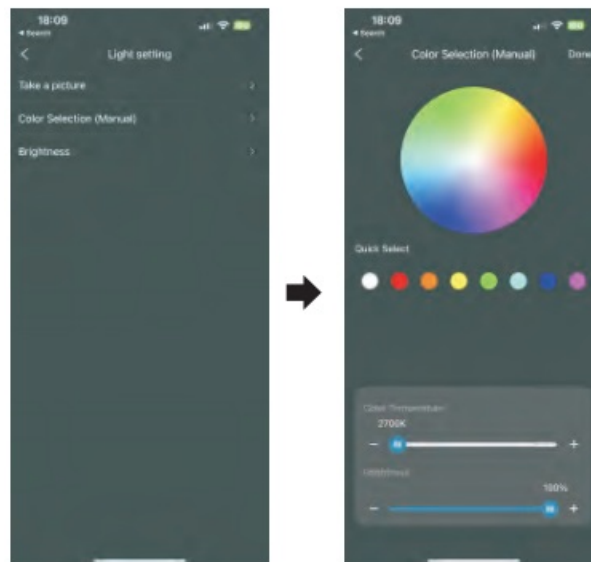
1. Take a picture of target commodity or choose a photo from albums.
2. “Draw a box” or “tap” on the target color, then the light will change accordingly. Usually drawing a box is suitable for large area of a color or mixed colors, and tapping is for choosing a small area from mixed colors.
3. The brightness can be adjusted by dragging the slider below.
4. If you are not satisfied with the light, tap “More” to have more choices.

5. Tap “Done” to save the setting, and “Auto Mode” will be turned off automatically.



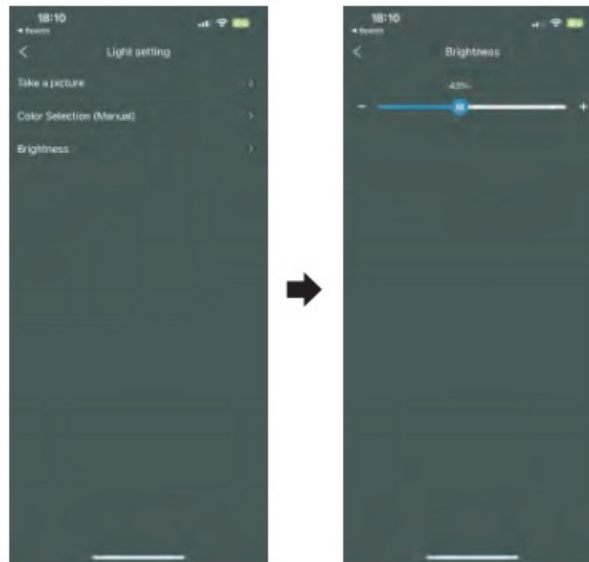
Color Selection

1. Tap “Color Selection” on Light setting page.
2. User can tune color, saturation, color temperature, and brightness of the light.
3. Tap “Done” to save the setting, and “Auto Mode” will be turned off automatically.



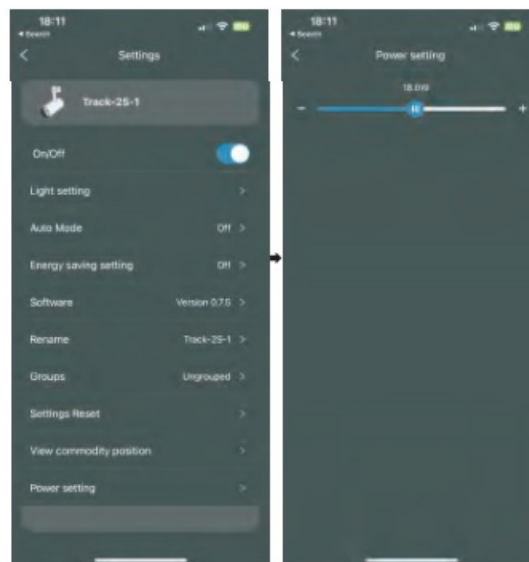
Brightness

1. Tap “Brightness” on Light setting page.
2. Drag the slider to adjust brightness of spotlight.



Power Setting

1. Tap “Power Selling” on Settings page
2. Drag the slider to adjust output power of spotlight.

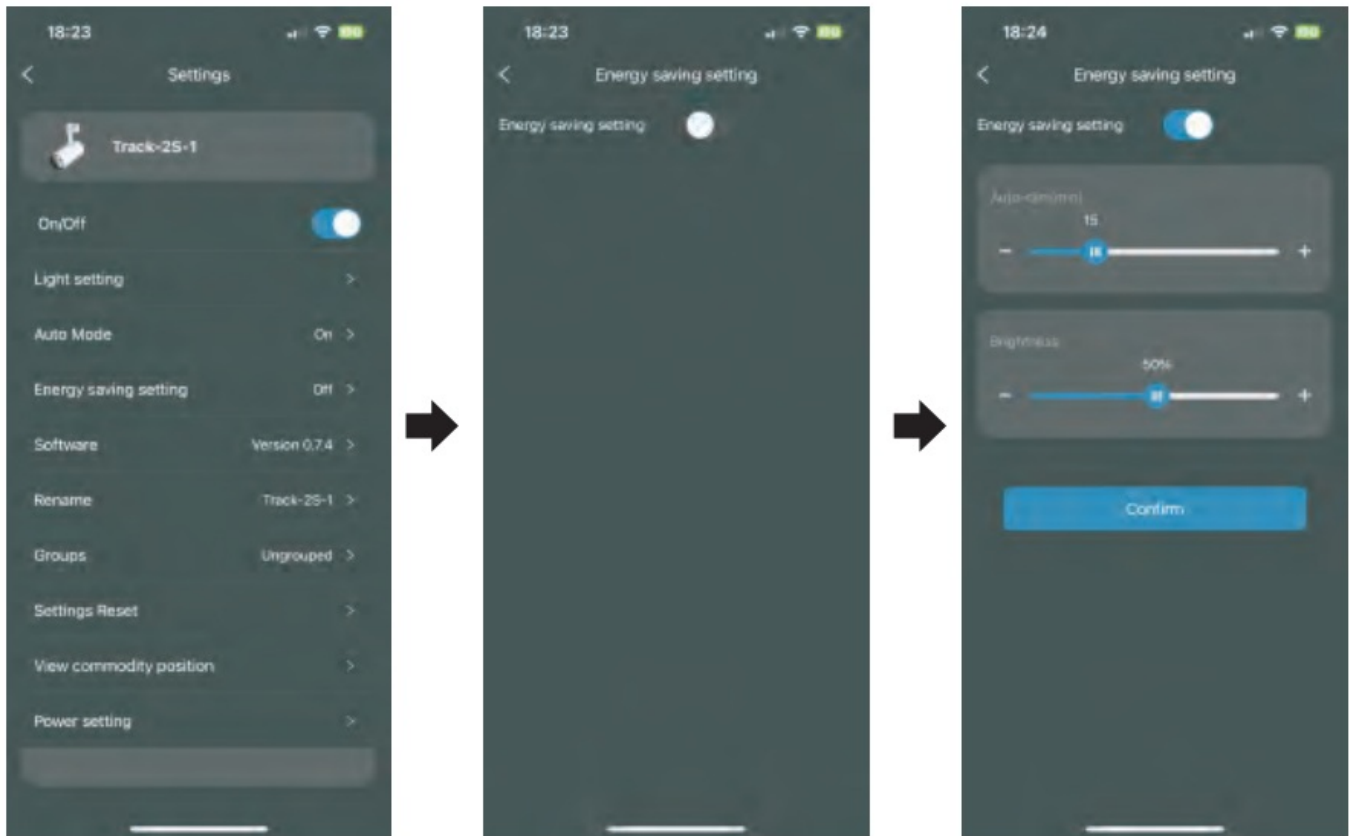


Energy Saving Setting

1. If customer(s) detected by the movable sensor on the light, the brightness turn to
2. If no customer detected, dim the light to the pre-set brightness level after a chosen time.
3. Tap “Confirm” to complete the setting, and return to abandon.

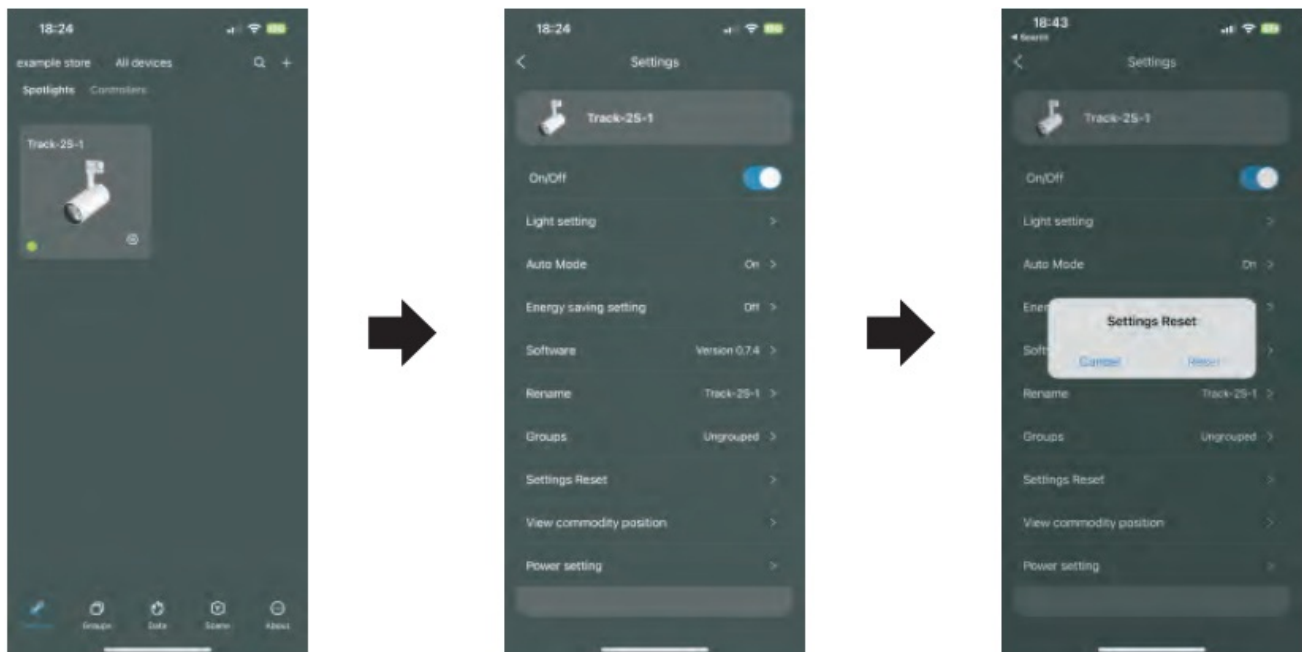
Note: This function is off by default. Follow the instructions below to active it.

Auto-dim(min): how many minutes after customers leave the light starts to dim. The range is from 1 minute to 60 minutes. rightness without customers: what percentage of brightness to illuminate at the standby status. The range is from 0%-100%.



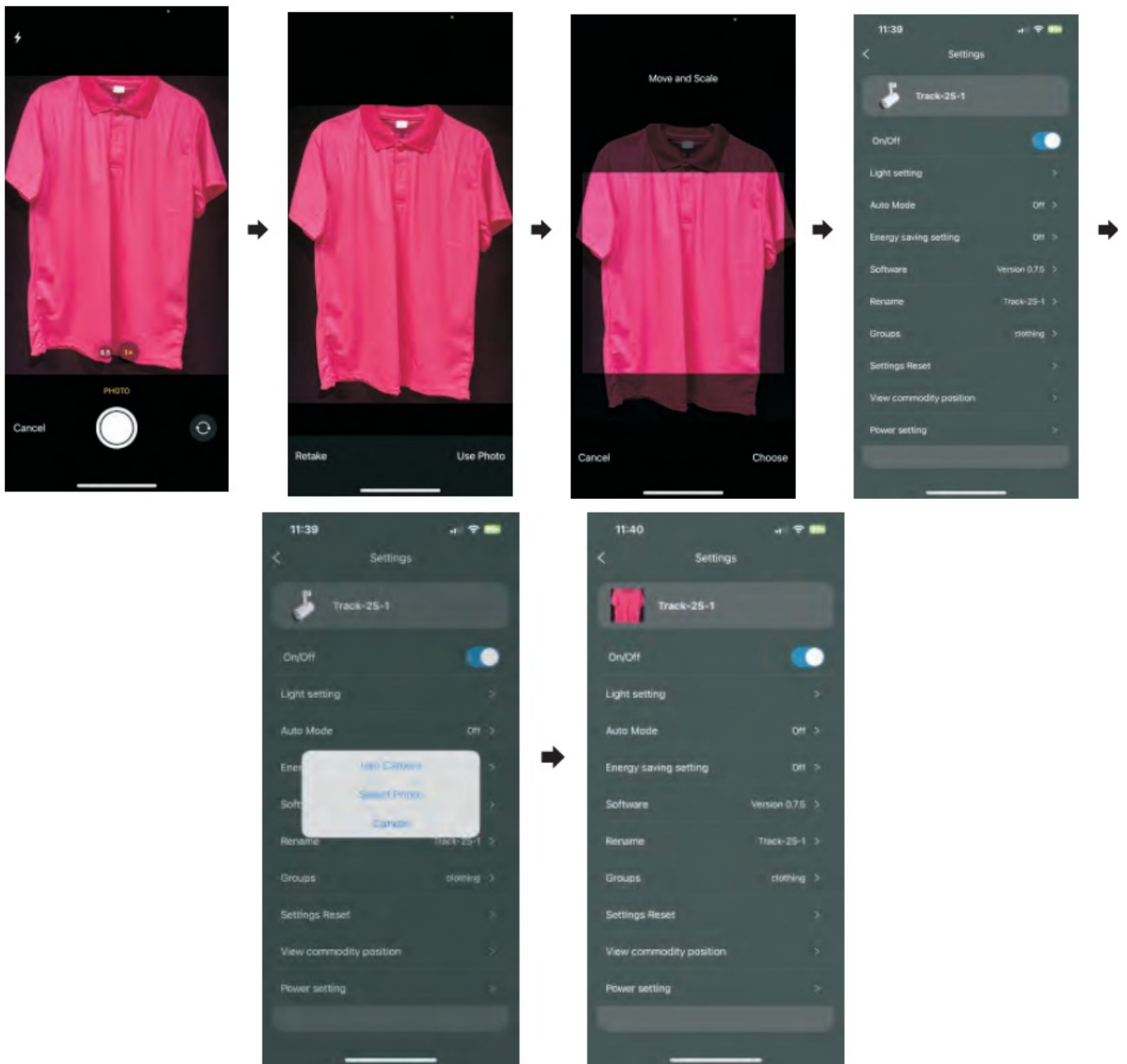
Settings Reset

1. Tap setting icon and enter the Settings page.
2. Tap “Reset Settings.”
3. Tap “Reset” .The device will be removed from the app and reset lo factory default settings.



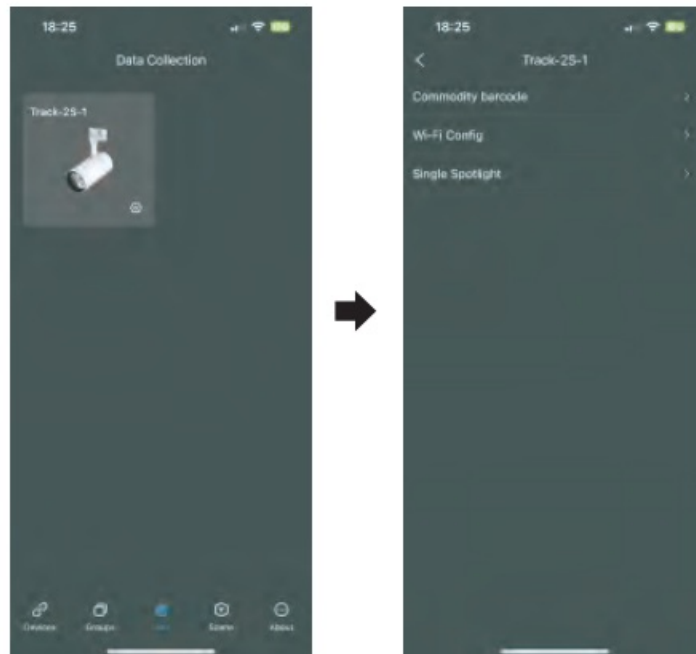
Picture of device

1. Tap the picture of device .
2. Take a picture or choose a photo from albums.
3. Tap “Choose” and the device icon will be set.



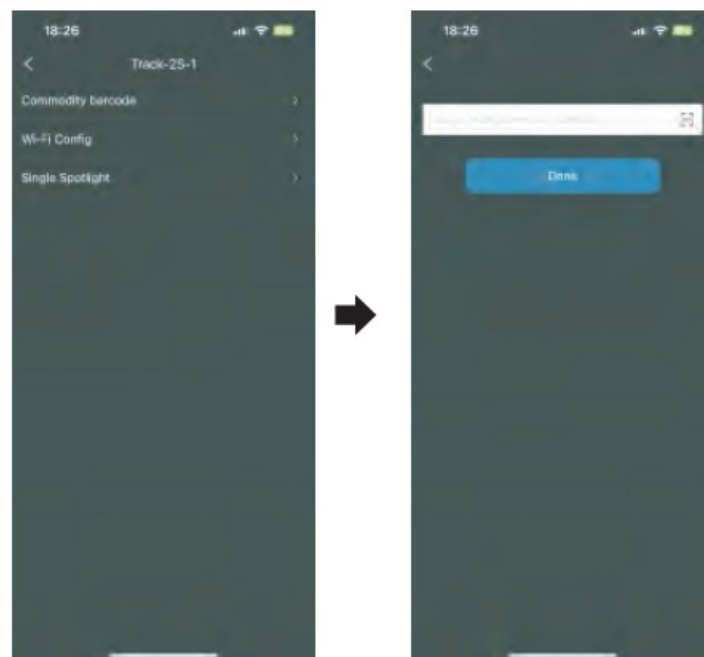
Data:Operation

1. Tap "Data". Only Meta Pro Dual devices are showed here.
2. Tap spotlight icon to get into setting page.



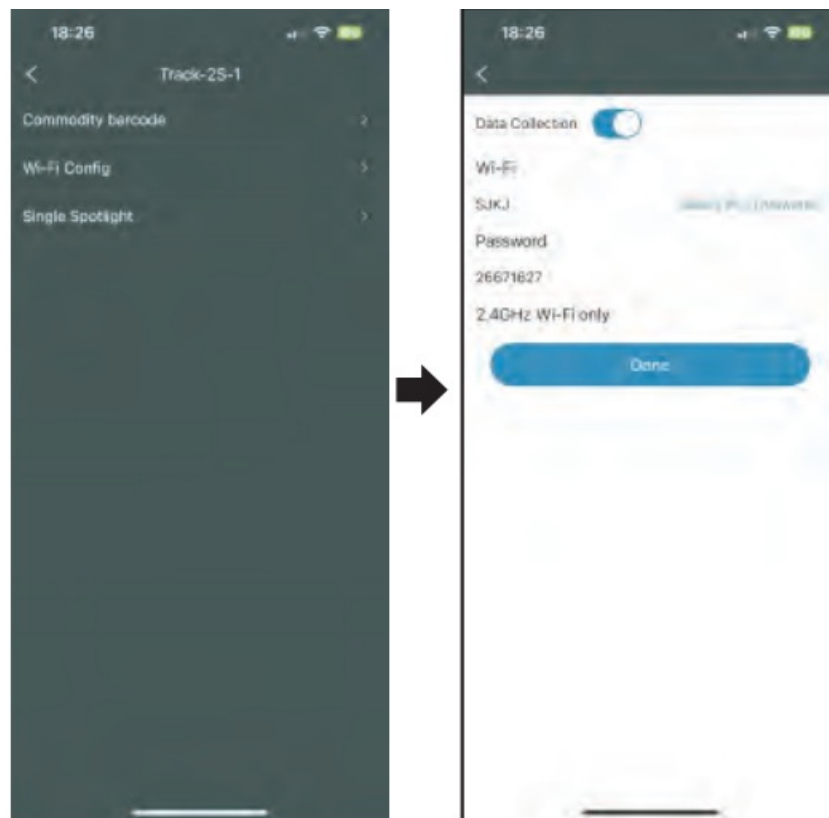
Barcode

1. Tap "Commodity barcode".
2. Scan the commodity barcode or type it manually or input the name of the commodity.
3. This function associates the spotlight with commodity for data analysis.



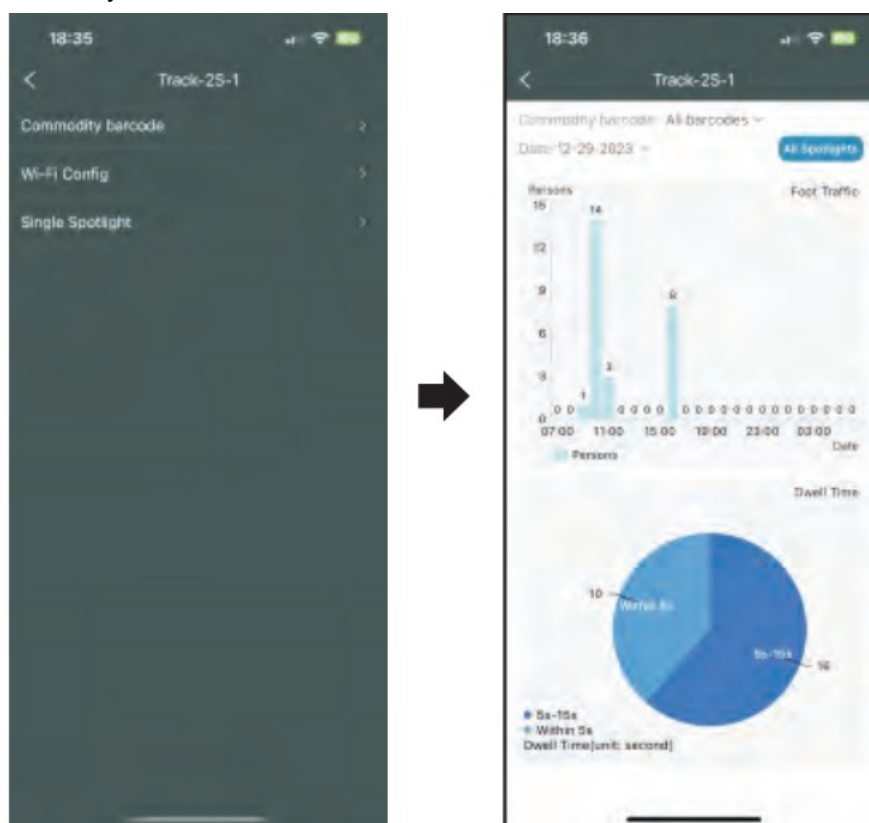
Switch and Wi-Fi Configuration

1. Data function requires Internet connection. Configure Wi-Fi before use.
2. Tap "Wi-Fi Config" .
3. Turn on Data function, enter Wi-Fi name and password(2.4GHz supported only),lap "Done" to finish configuration.
4. Wi-Fi configuration requires Bluetooth connection.



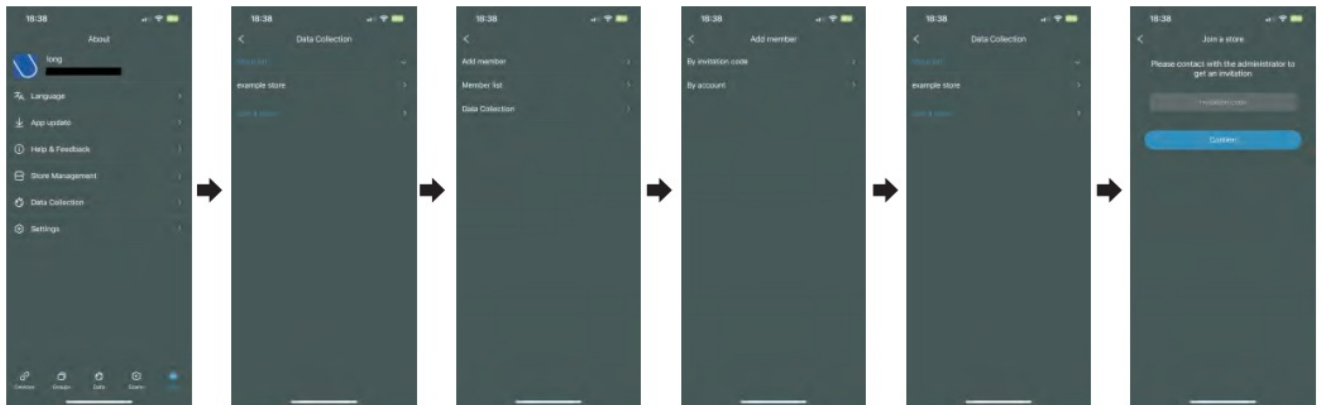
Display

1. Tap "Single Spotlight" to display the corresponding data to the current device.
2. Tap "All Spotlights" on the top right to display data of all Meta2 Pro Dual devices in the store.
3. You can view data remotely.



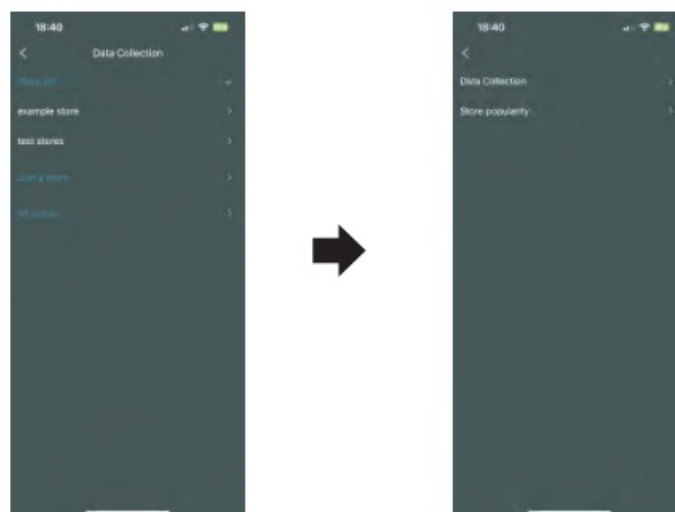
Authorization

1. Administrator can view data of all Meta2 Pro Dual devices in the store. Other users do not have the right unless the administrator authorizes them.
2. For authorization, tap “Data Collection” on About page > Choose the store> Tap “Add member” > Choose “By invitation code” to share the invitation code or “By account” to type invitee’s account.
3. For other users, Tap “Join a Store” > Enter the invitation code.
4. Authorized users can view data of the store.



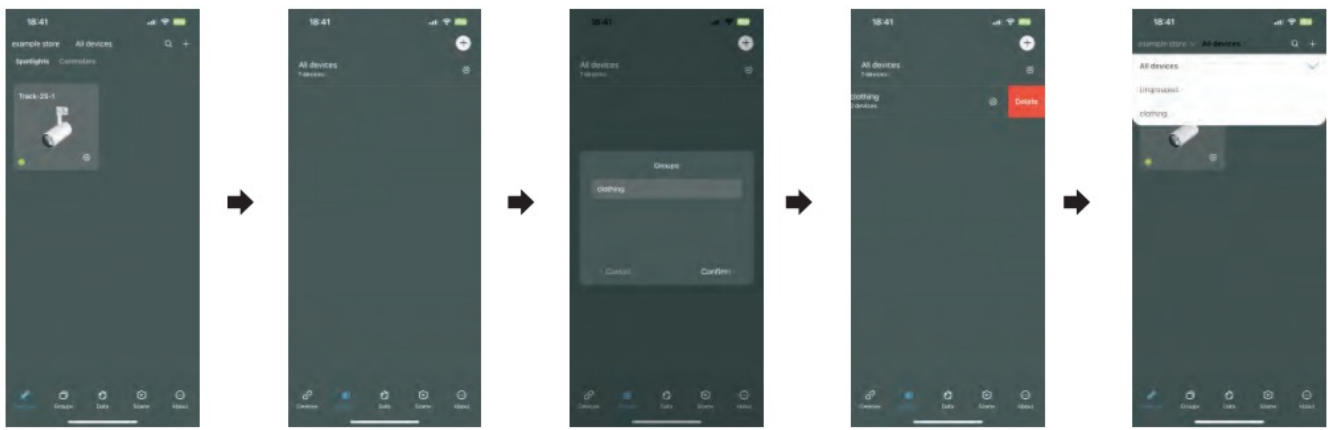
Comparison between Stores

1. This function is also designed for chain stores in different places. Store administrators need to authorize headquarter users separately.
2. Headquarter users can check the data of all chain stores.
3. Tap “All stores” to get into comparison page. Currently there are two functions: Data Collection(most popular commodities) and Store popularity.



Create/Delete a Group

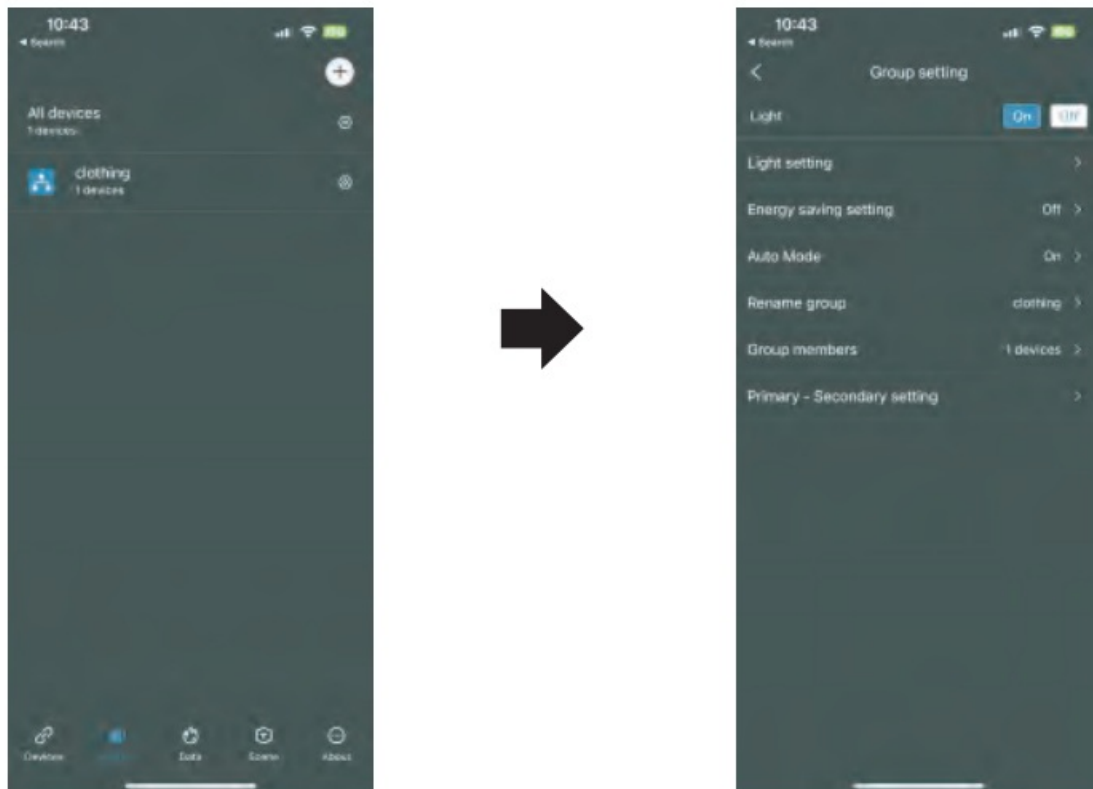
1. On Groups page, tap “+” > Input a group name > Tap “Confirm” to add a group.
2. If you want to delete a group on the list, slide left to delete it.
3. on Devices page, users can switch different groups.



Group Setting

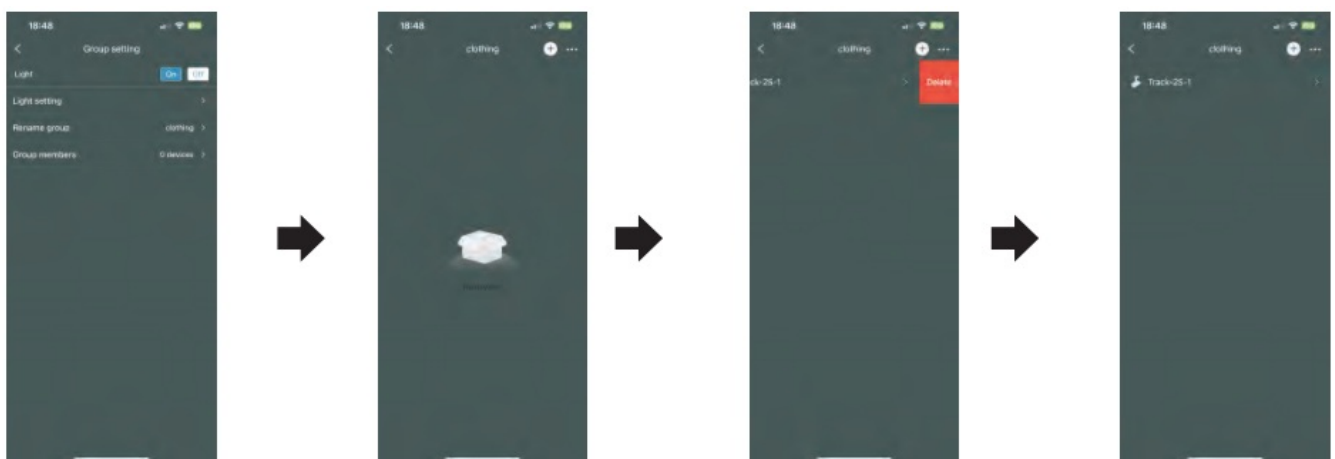
On the Groups page, tap setting icon to get into Group Setting page.

- Light On/Off :
Turn on or off all lights in the group by APP. In order to avoid turning on or off too frequently, there is a three-second wait between On and Off.
- Light setting :
As the same as the single device, but this item here is for all lights in the group.
- Energy saving setting :
When there is a device with sensor in the group, energy saving settings can be activated. All devices with sensor and without sensor in the group will be synchronized.
- Auto Mode:
Only device with sensor is activated.
- Rename group:
Rename the group.
- Group members :
Show how many devices in the group. Tap to show device list.



Group members management

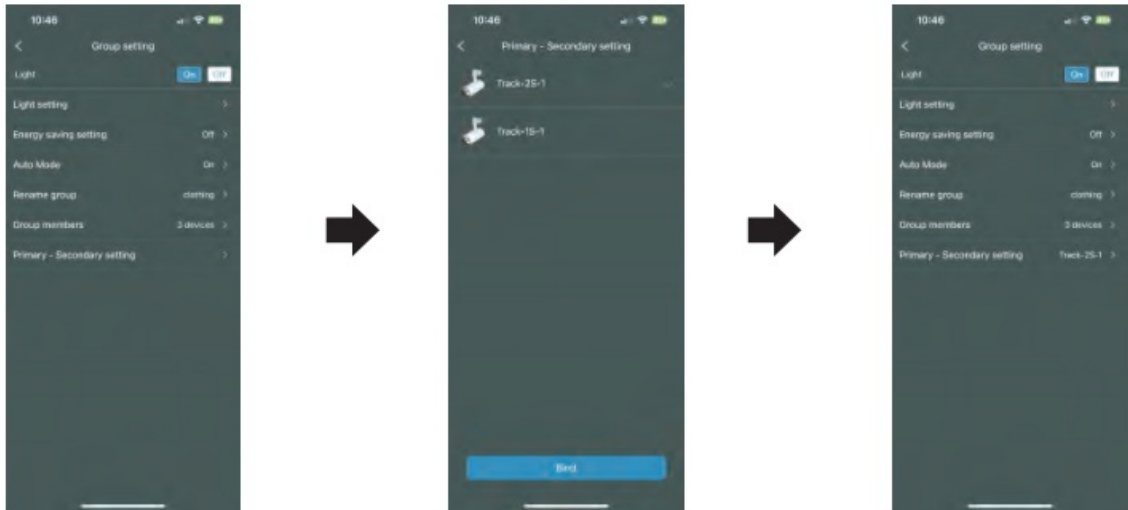
1. Tap “Group members” to get into device list.
2. Tap “+” to add new devices to the group.
3. Slide left on the device list to delete it from current group.
4. For multi operation of deleting, tap “...” on the top right corner.



Primary-Secondary setting

1. Tap “Primary-Secondary setting” to get into device list.
2. Select a device as the Primary light and tap “Bind” to complete setting (non-sensor device cannot be used as Primary light).
3. Set the Primary light to Auto Mode. When the Primary light detects target object, the light changes and the Secondary lights will follow. Set the Primary light to energy-saving mode. When the Primary light enters energy-saving mode, the Secondary lights will follow. That is, if you make any changes for the Primary light, the

Secondary lights will follow.



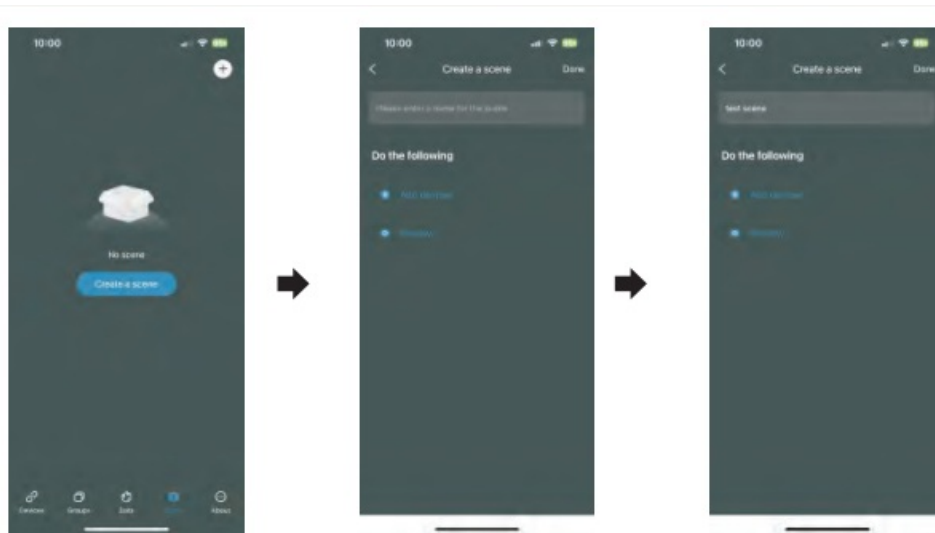
All Devices Control

1. Get into “Groups” page. There is an item “All devices” on the top.
2. Tap setting icon to get into All devices page.



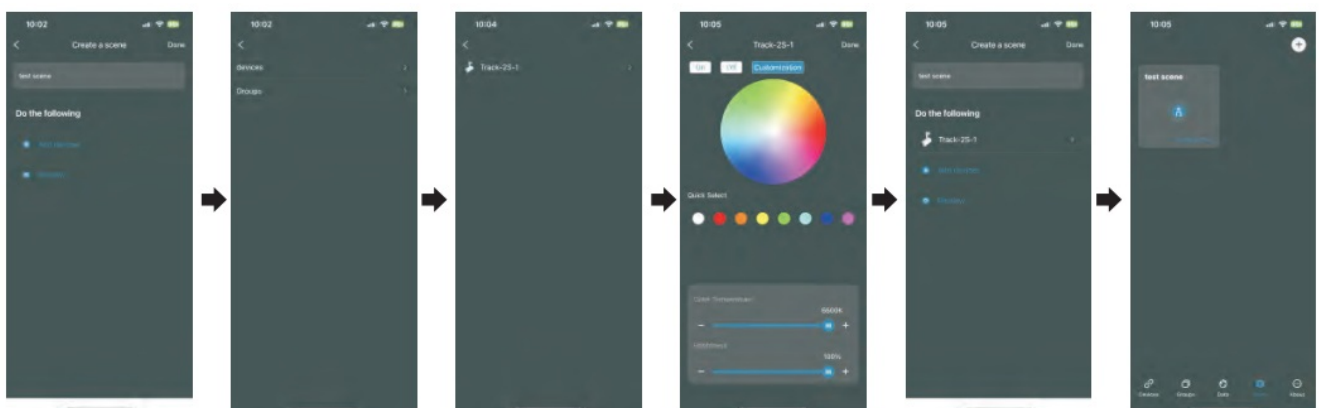
Crear a scene

1. In “Scene” page, tap “Crear a scene” or “+”.
2. Enter a name for the scene.



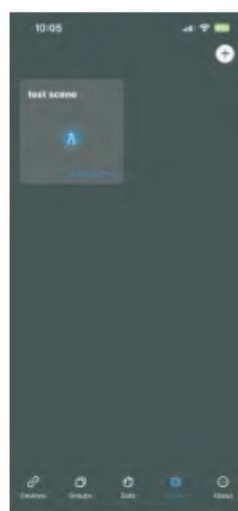
Add devices to the scene

1. Tap “Add devices”> “devices”> tap a device.
2. Select the effect of the device: “On”, “Off”, or “Customization”. For example , tap”Customization”and tune color saturation, color temperature, and brightness of the light.
3. User can add multiple devices or groups in one scene.
4. Tap “preview”to check the effect of the lighting.
5. Tap “Done”to save the settings.



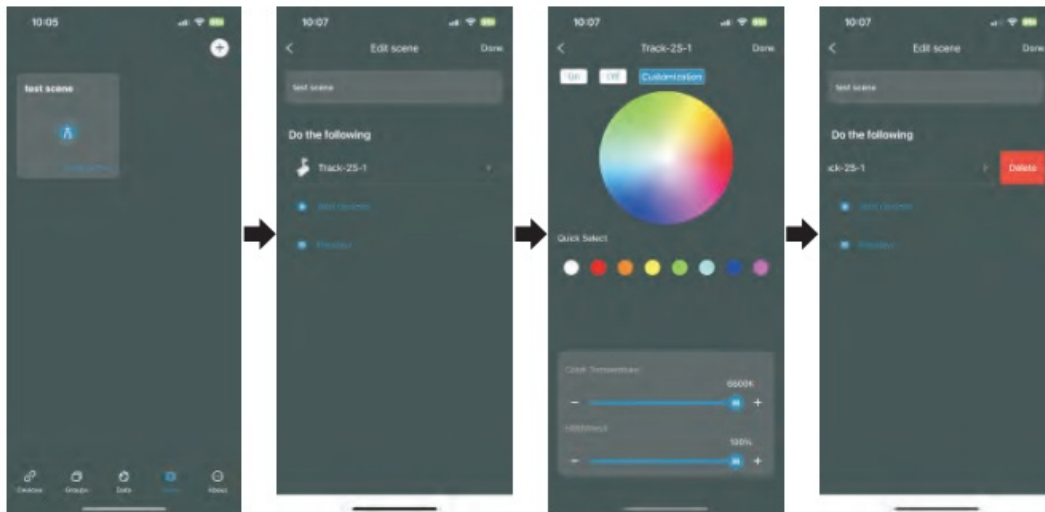
Execute a scene

Tap the scene icon and the lighting will change to the set effect.



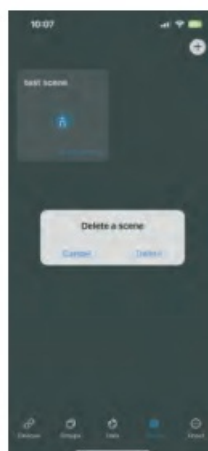
Scene setting

1. Tap “Scene setting” > tap a device. User can modify the effect of the lighting.
2. Slide left on the device list to delete it.
3. Tap “Done” to save the settings.



Delete a scene

1. Tap the scene icon and hold on. and a dialog box pops up.
2. Tap “Delete” and delete the scene.

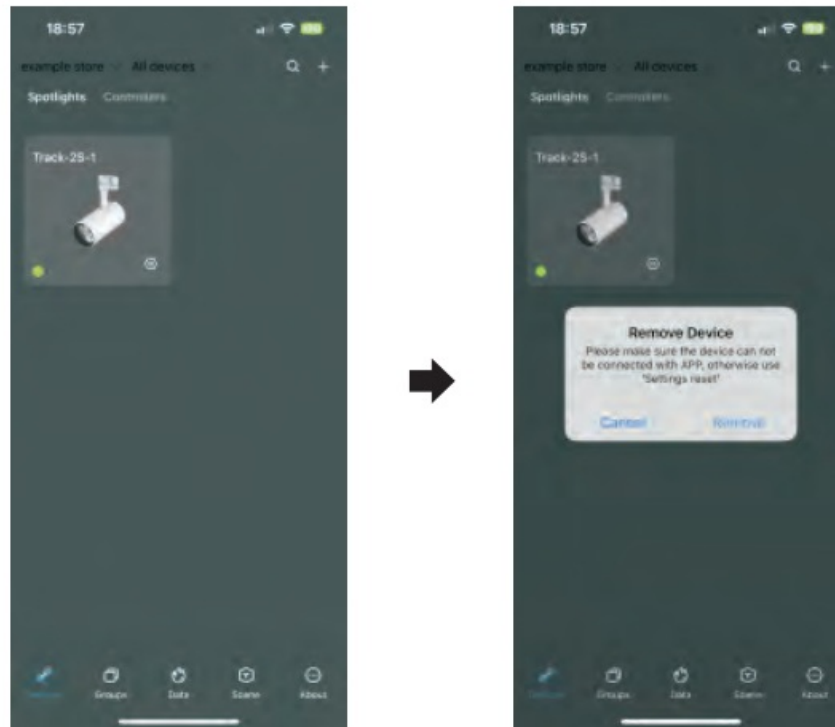


How to deal with disconnected device

1. Tap and hold on the light icon, and a dialog box pops up.
2. Choose “Remove” to remove the light from App.

Note: Please be very cautious to use this function! If the light can be connected with App, please remove it with “Settings reset” in Settings page. If you remove a device this way, the only way to get it back is resetting it physically and add it back again.

How to reset a device physically? Please press the physical button on the device for more than 3 seconds.



Status of the Smart Series

Status	Indication
Device Connecting	The light will be flashing 5 times
Device Connected Failed	APP shows Time Out
Device Connected Successes	The light will be flashing 5 times
Light changes automatically	The APP shows “Auto Mode” on

The first things to check if the light does not work well:

Problems	Indications Status	Solution
Connection Failures	Time Out	<ol style="list-style-type: none"> 1. Make sure the power is on. 2. Bluetooth out of range, please move closer. 3. The Bluetooth on your smartphone or iPad is off. <p>If still not solved, please contact UNI-BRIGHT.</p>
Mismatches	Lighting doesn't match commodity	<ol style="list-style-type: none"> 1. Please put commodity in the center of light beam. 2. Turn "Auto Mode" on, or set light with APP. 3. Color sensor on the light doesn't work well if the commodity is too far or too small, please use APP to set the light. 4. If still not solved, please contact UNI-BRIGHT.

App latest version

- iOS: 1.9.5
- Android: 1.0.65
- Subject to change without notice.

Instructions



Please follow the sequence of installation step by step. Switch off the electricity before commencing installation

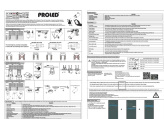
UNI-BRIGHT nv
Belcrownlaan 13-Q

- 2100 Antwerp – Belgium
- T +32 (0)3 641 61 40
- F +32 (0)3 645 18 31 www.proled.com

Questions & Feedback?

Any questions & feedback on the Smart Series luminaires or APP. Please email info@unibright.be

Documents / Resources

	PROLED USMTLDS3020W Smart Track Lights Dual Sensor [pdf] Instruction Manual USMTLDS3020W Smart Track Lights Dual Sensor, USMTLDS3020W, Smart Track Lights Dual Sensor, Track Lights Dual Sensor, Lights Dual Sensor, Dual Sensor
---	--

References

- [User Manual](#)

[Manuals+](#), [Privacy Policy](#)

This website is an independent publication and is neither affiliated with nor endorsed by any of the trademark owners. The "Bluetooth®" word mark and logos are registered trademarks owned by Bluetooth SIG, Inc. The "Wi-Fi®" word mark and logos are registered trademarks owned by the Wi-Fi Alliance. Any use of these marks on this website does not imply any affiliation with or endorsement.