

PROLED®

**SMFT30B
Smart
Tracklight
Framer**



PROLED SMFT30B Smart Tracklight Framer Instruction Manual

[Home](#) » [PROLED](#) » PROLED SMFT30B Smart Tracklight Framer Instruction Manual 

Contents

- 1 PROLED SMFT30B Smart Tracklight Framer
- 2 Product Usage Instructions
- 3 Frequently Asked Questions
- 4 Smart downlight
- 5 Installation
- 6 Smart framer track light
- 7 Single Device Control
- 8 Group Control
- 9 All Devices Control + Scene
- 10 Contact
- 11 Documents / Resources
 - 11.1 References
- 12 Related Posts

PROLED®

PROLED SMFT30B Smart Tracklight Framer



Product Usage Instructions

Step 1: Add New Device

Tap “Add new device” or the “+” symbol on the top right of the App to view all the spotlights within Bluetooth reach.

Step 2: Choose Device

Choose the desired device and tap “Done”. The corresponding spotlight will flash five times. Enter a name for the light.

Step 3: Configure Settings

Tap “Confirm”. The App will show the settings page of the spotlight. If a software update notification pops up, please update the software first.

Frequently Asked Questions

- **Q: How do I troubleshoot connectivity issues with the spotlight?**
 - A: Ensure that the spotlight is within Bluetooth reach and try restarting both the spotlight and your device. If connectivity issues persist, contact customer support for further assistance.
- **Q: Can I control multiple spotlights simultaneously through the App?**
 - A: Yes, you can control multiple spotlights within Bluetooth reach by adding each device individually following the steps provided in the user manual.

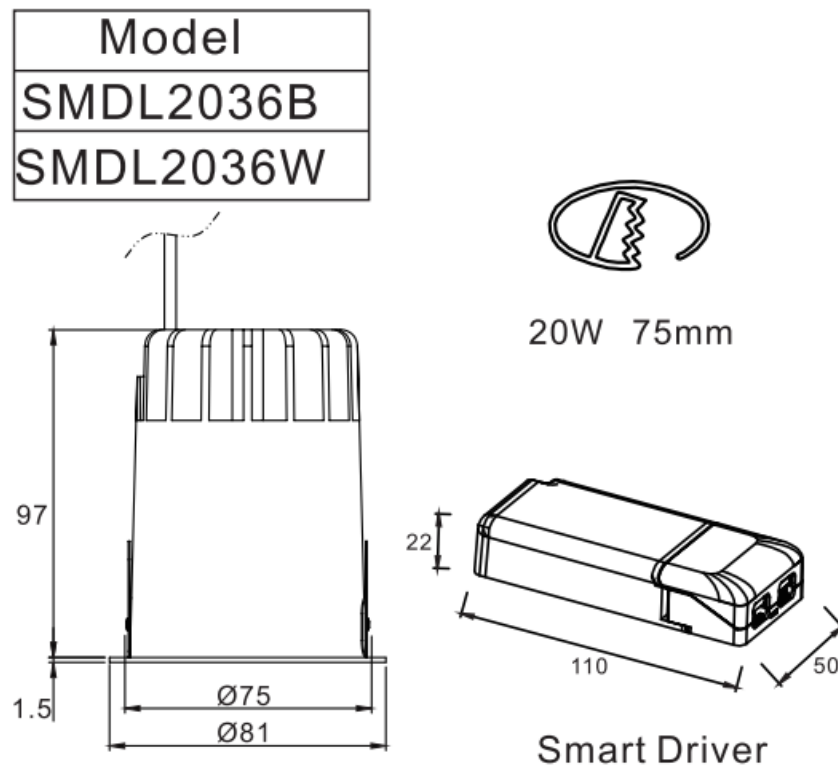
Symbol



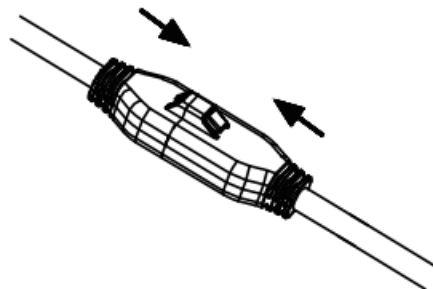
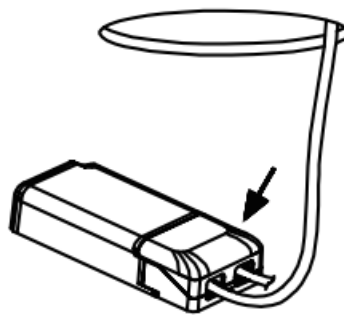
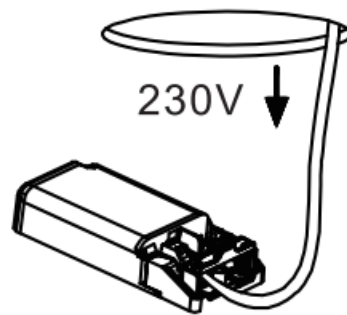
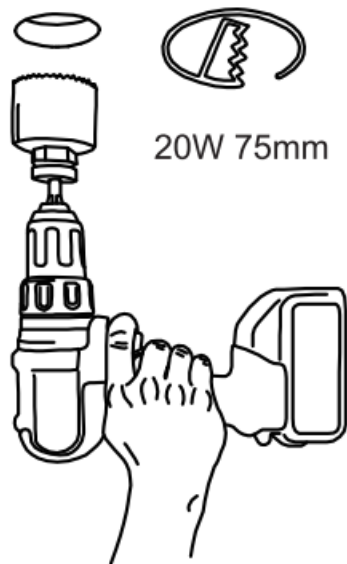
Smart Series Instructions

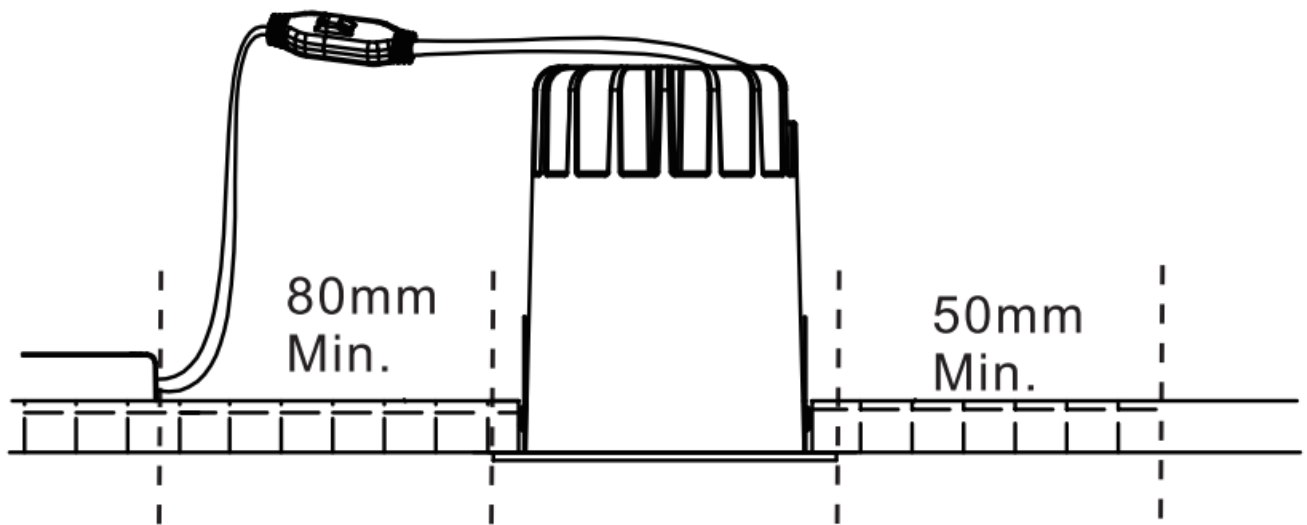
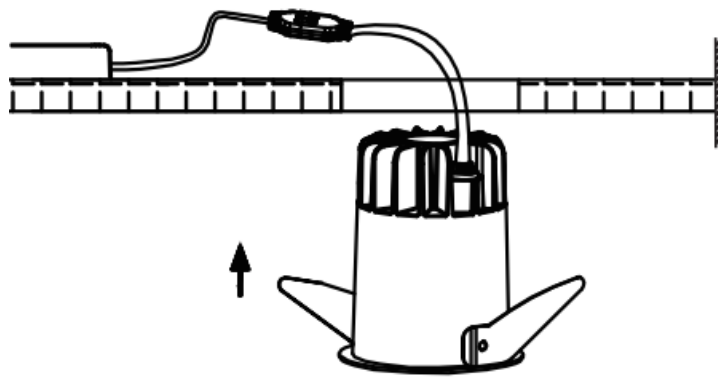
Smart Series is a smart retail lighting solution based on Artificial Intelligence (AI) and Internet of Things (IoT) technologies. Full-spectrum and high-saturation smart track lights analyze commodity information and the light spectrum and saturation can be adjusted adaptively. All the lights connected with Bluetooth mesh, while communicating with AWS Cloud through Wi-Fi. Global e-commerce growth is the biggest challenge the traditional business faces. According to study, “Personalized shopping experience” and “Preview commodity in person before purchase” are the top reasons why shoppers still prefer brick-and-mortar stores. Smart Series retail lighting solution gives shoppers a new shopping experience in brick-and-mortar stores.

Smart downlight



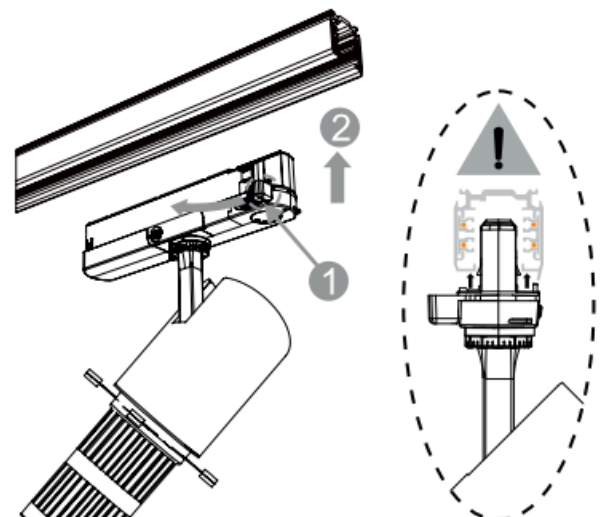
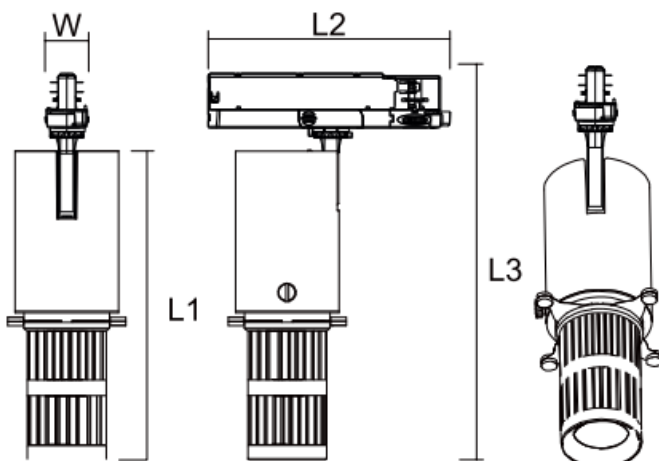
Installation

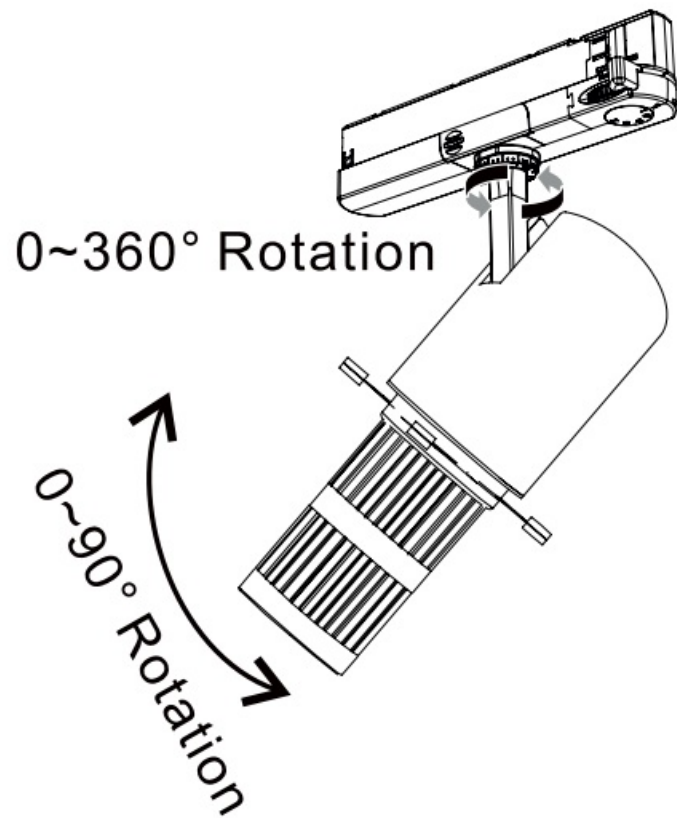
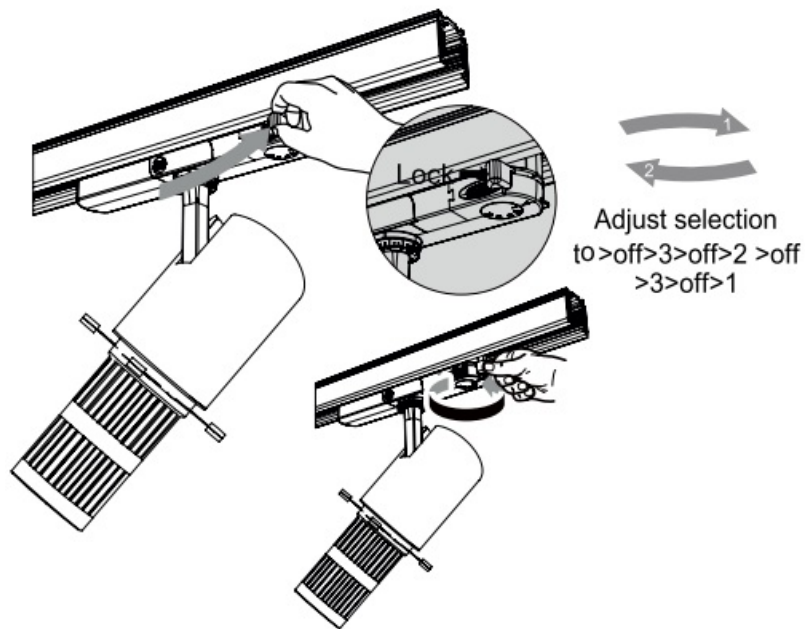




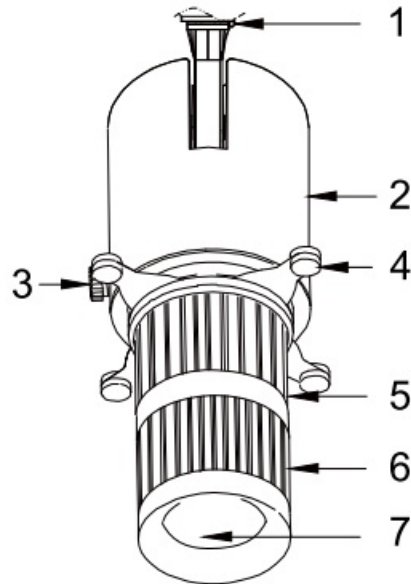
Smart framer track light

Size	30W
Model	SMFT30B
D	Ø80
L1	240
L2	187
L3	300
W	34





Reset switch Long press for 5 seconds to restore to factory settings



1. Stem

360° rotation achieves any lighting direction.

2. Heat Sink

Robust die-cast aluminum

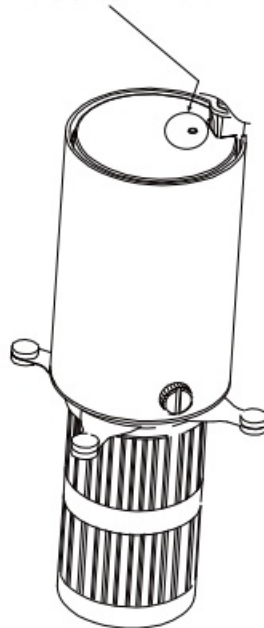
3. 355° Light Distribution

Rotation Locker Loosen this screw manually to achieve a 355° light distribution rotation.

4. Iris diaphragm

By adjusting the aperture plates, you can freely change the shape of the \light beam, providing perfect illumination of both rectangular and round exhibits.

Reset switch



5. Adjustable Focusing Lens

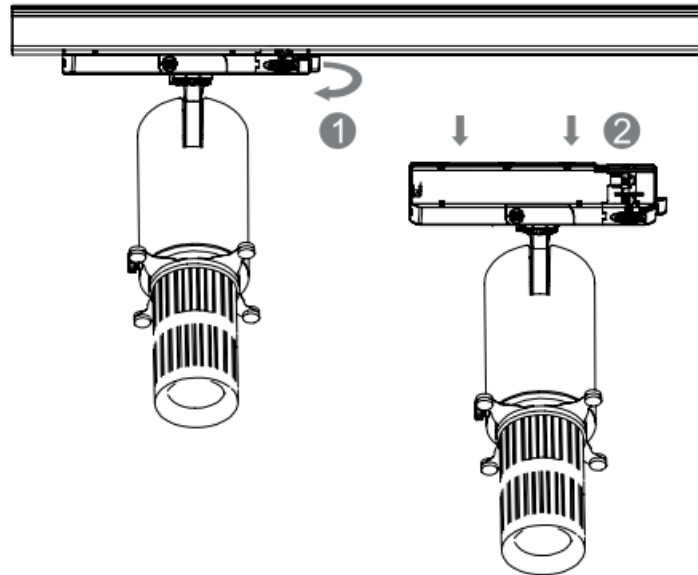
Rotating it allows you to adjust the sharpness of the beam outlines.

6. Zoom Lens

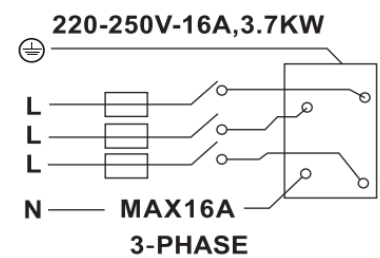
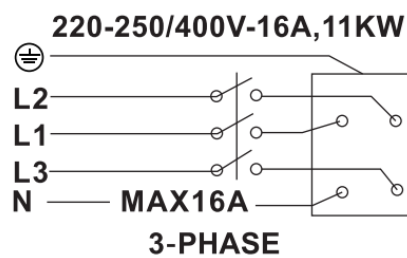
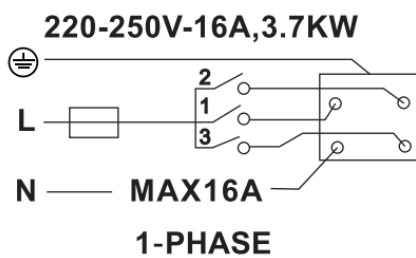
Rotating it allows you to adjust the size of the beam to custom-fit sizes and distances.

7. High-Quality Coated Optical Lenses

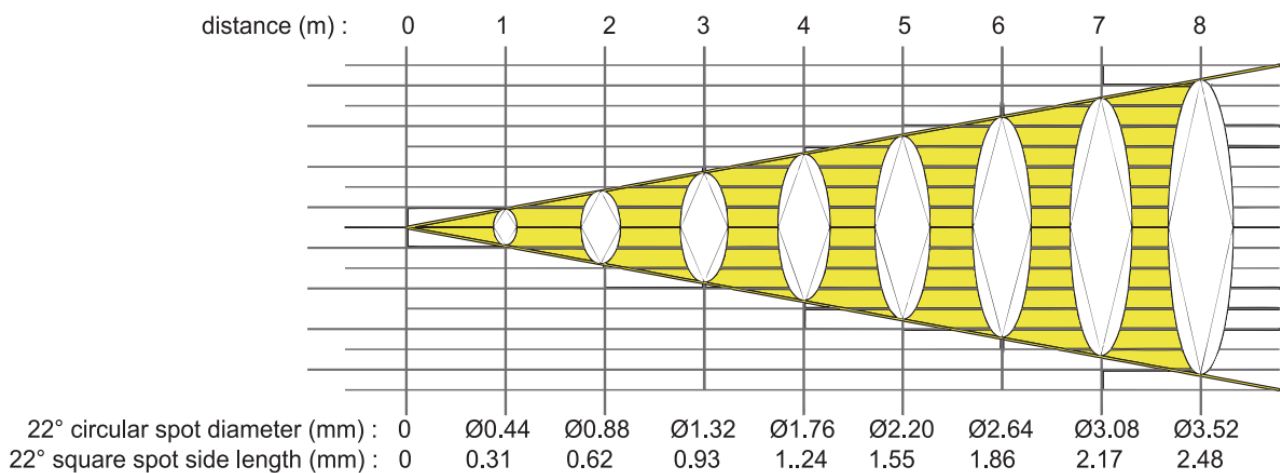
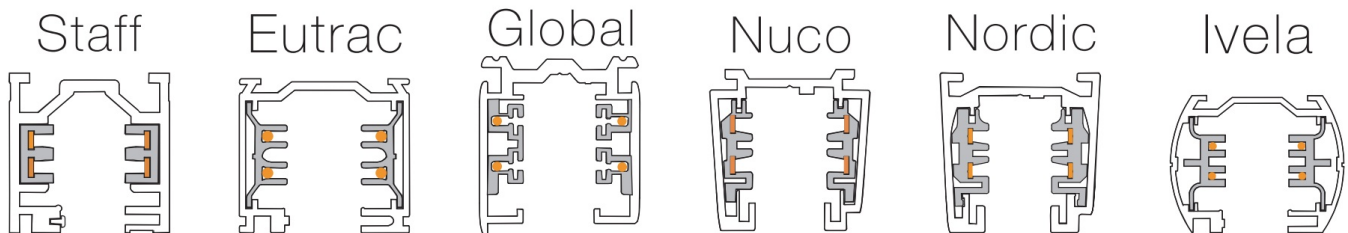
Increases light transmission. Reduces distortion. Eliminates blue edges.

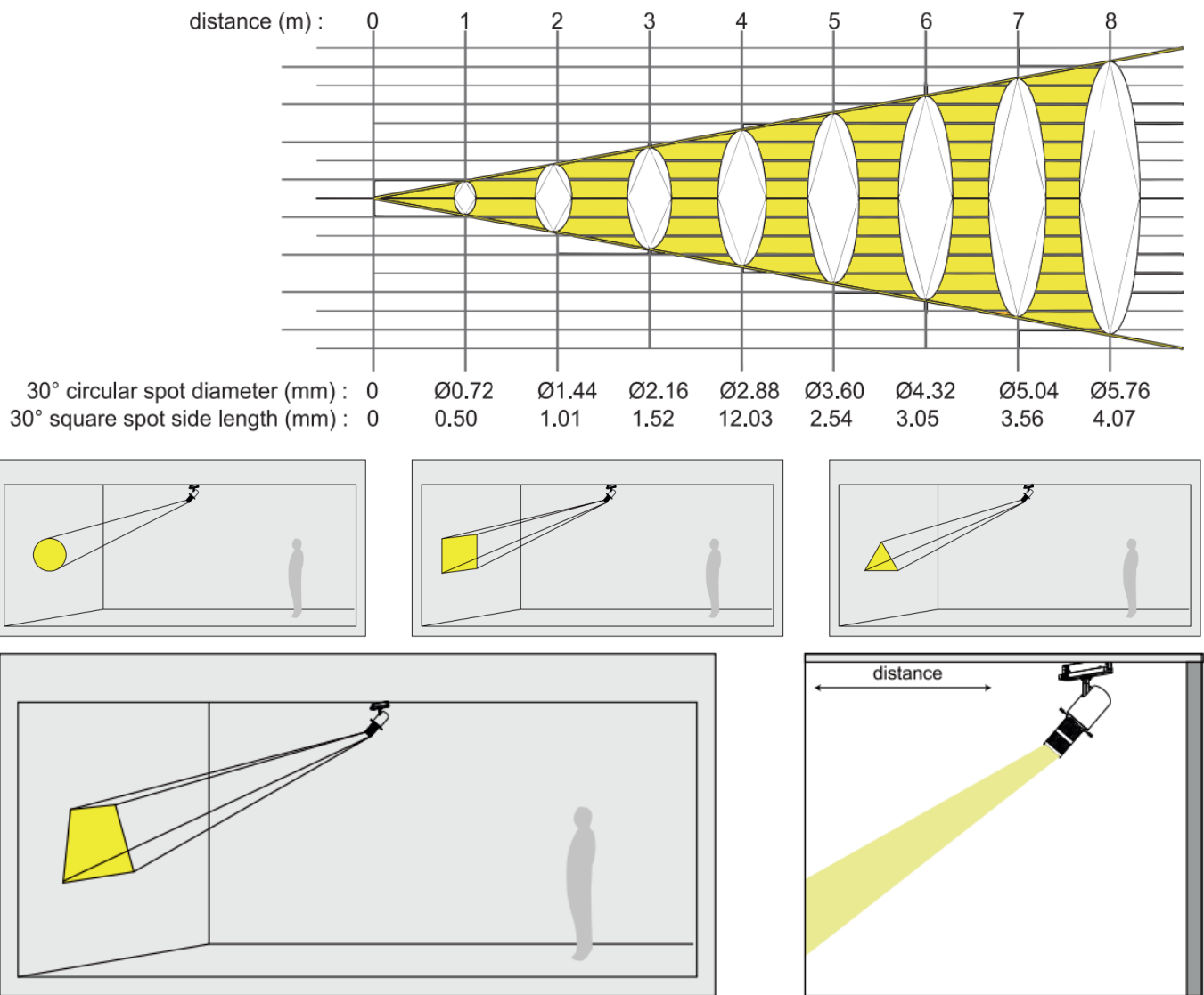


Rotate the track head clip to the other end of the clip point and tilt the luminaires according to the drawing until the track is pulled out.



The track light is universally compatible. It works with the following track systems:





By adjusting the optical components, various light pattern conversions such as square and circular shape, can be achieved. When the light is perpendicular to the object being illuminated, it yields superior light pattern effects. Excessive tilting may lead to alterations in the light pattern.

Product lifespan refers to lighting time when the luminous flux of 50% luminaires in a batch of the same luminaires reaches 70% of the initial luminous flux(L70B50)..

The estimated product lifespan is based on the indoor ambient temperature of 25°C, good air circulation and working at rated voltage.

1. Please be sure to cut off the power before operation.
2. Do not continue to use if the luminaire is damaged
3. Luminaires should not be stored and used in corrosive environments or in environments containing hazardous substances such as sulfide, halides , phthalates, etc.
4. Luminaires should be installed outside the reach of human hands.

Warning: The light source and parts of these luminaires are not replaceable. When the light source and parts reach the end of their life, the whole luminaires should be replaced.

Please follow the sequence of installation step by step. Switch off the electricity before commencing installation

App Overview

The App is designed to configure and set Smart Tracklights over Bluetooth mesh, and the APP communicates with the cloud server via Wi-Fi router.

Functions	Description
Light On/Off	To switch ON or OFF a single spotlight, a group of spotlights or all spotlights .
Light setting	Provides the best CCT and color enhancement according to commodities by Take a picture in the App. Or customize light setting in the App.
Brightness adjustment	To adjust the output brightness from 1% to 100%, default at 100%
Wattage settings	To adjust the output power from 5W to the maximum power of the spotlight.
Software update	To OTA (Over the Air) update the firmware (software) on the spotlights to the latest version
Group setting & Group control	To manage some spotlights in a same group and group control them ON/OFF, group light setting, etc.
Primary setting	Select a device to be the Primary light in a group, when the Primary light changes, the Secondary light will follow.
Factory reset	To reset the light to initial settings, and the light will be removed from APP.
Store management	To create a store or join a store
Scene	Control multiple devices and groups to realize customized adjustments of color temperature and brightness.

Default Settings

Functions	Description
Brightness adjustment	default at 100%
Wattage settings	maximum power by default

Terminology

	Description
Take a picture	Take a picture of the target product and select an area on the photo then the light outputs recommended recipes.
Color Selection	User can tune color, saturation, color temperature, and brightness of the light.
Software update	To OTA (Over the Air) update the firmware (software) on the spotlights to the latest version.
Group setting	To manage some spotlights in a same group and group control them ON/OFF, group light setting, and energy saving, auto mode, etc.
Primary setting	Select a device to be the Primary light in a group, when the Primary light changes, the Secondary light will follow.
Factory reset	To reset the light to initial settings, and the light will be removed from APP.
Sub-administrator	To facilitate the management of the store's lighting, the sub-administrator can obtain admin right to perform operations such as adding lamps and creating groups.
Secure admin right	Sub-administrators acquire and lock permissions to become administrators.

Status Indication & Troubleshooting

Status	Indication
Device Selected	The light will be flashing 5 times
Device Connection Failure	APP shows Time Out
Device Setup Success	The light will be flashing 5 times

Problems	Indications Status	Solution
Connection Failures	Time Out	1.Make sure the power is on.
		2.Bluetooth out of range, please move closer.
		3.The Bluetooth on your smartphone or iPad is off.
		4.If still not solved, please contact UNI-BRIGHT

Download and Install App

Search "PROLED Smart Control from App Store for iOS, or Google Play Store for Android

Languages English, French, German and Dutch

App Compatibility

- iPhone: Requires iOS 13.0 or later
- iPad: Requires iPadOS 13.0 or later
- iPod touch: Requires iOS 13.0 or later
- Mac: Requires macOS 11.0 or later and Mac with the Apple M1 chip
- Android: V4.4 or later



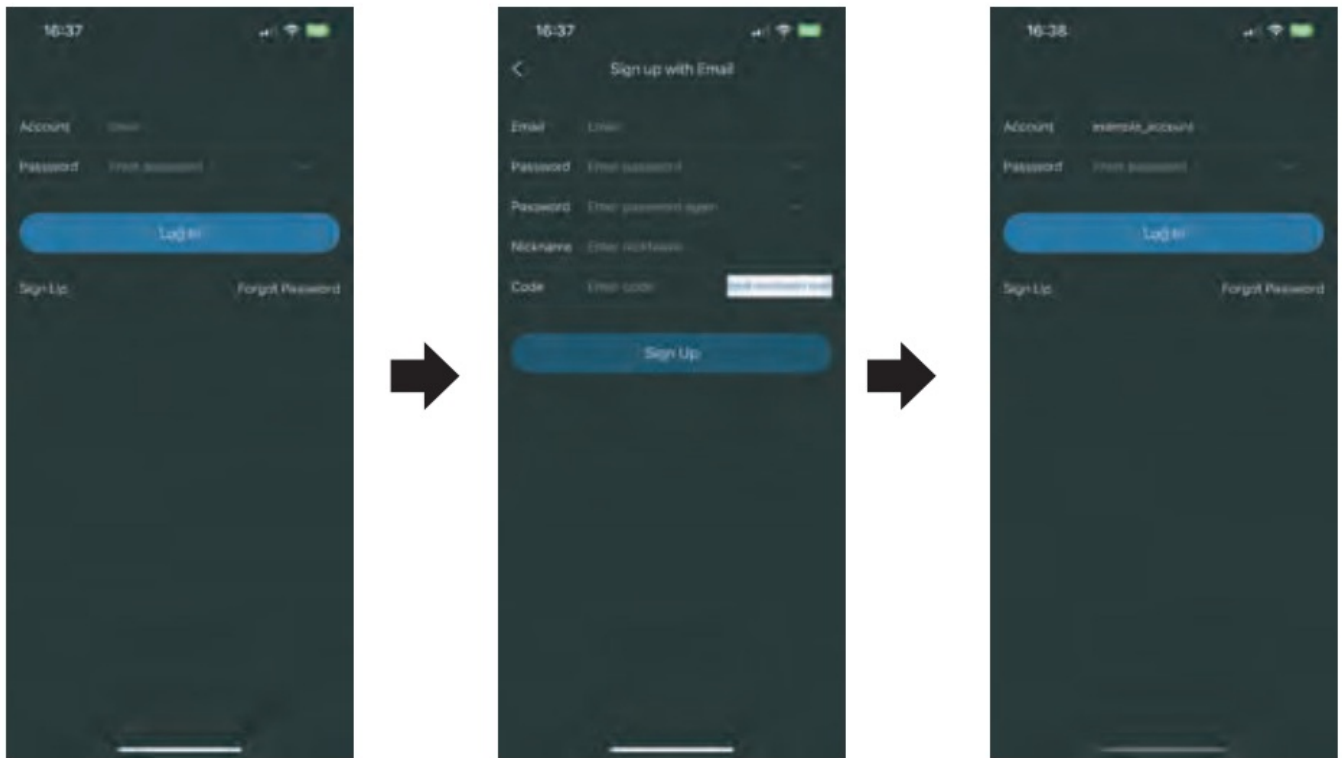
App latest version

- iOS: 1.9.7
- Android: 1.0.80
- Subject to change without notice

Single Device Control

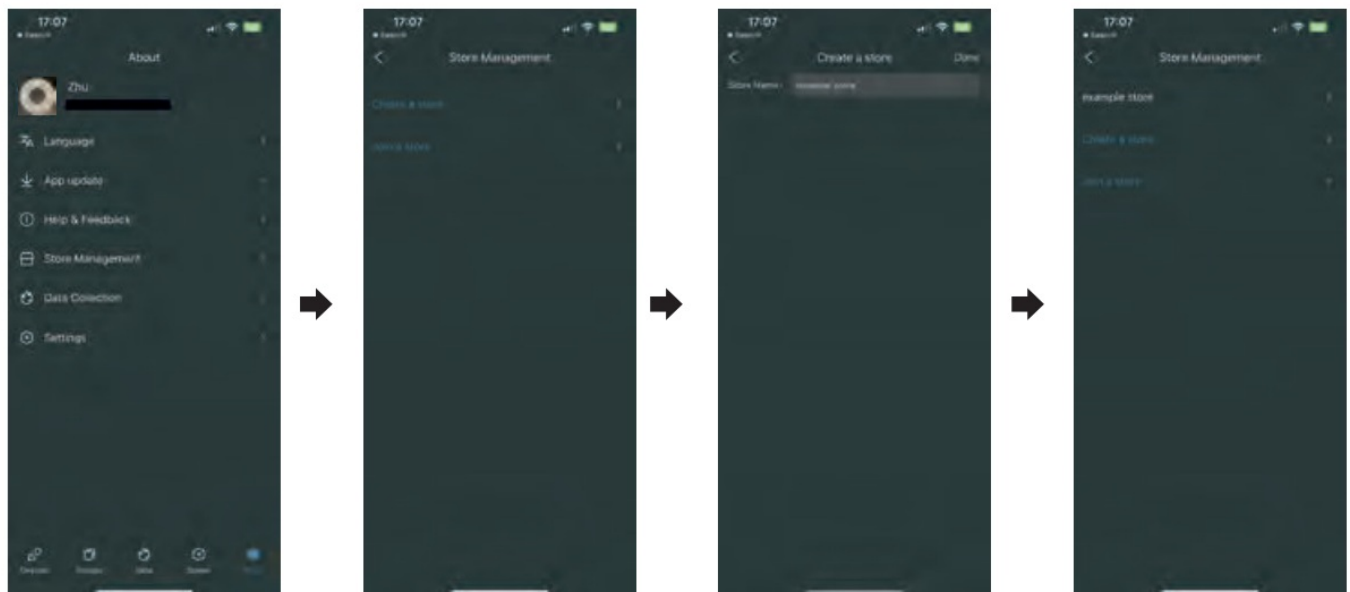
Sign Up and Login

1. Tap "Sign Up" to create your account and password
2. Follow the instruction to complete "Sign Up" and get onto "Login" page
3. Use your email and password to log in



Create a Store

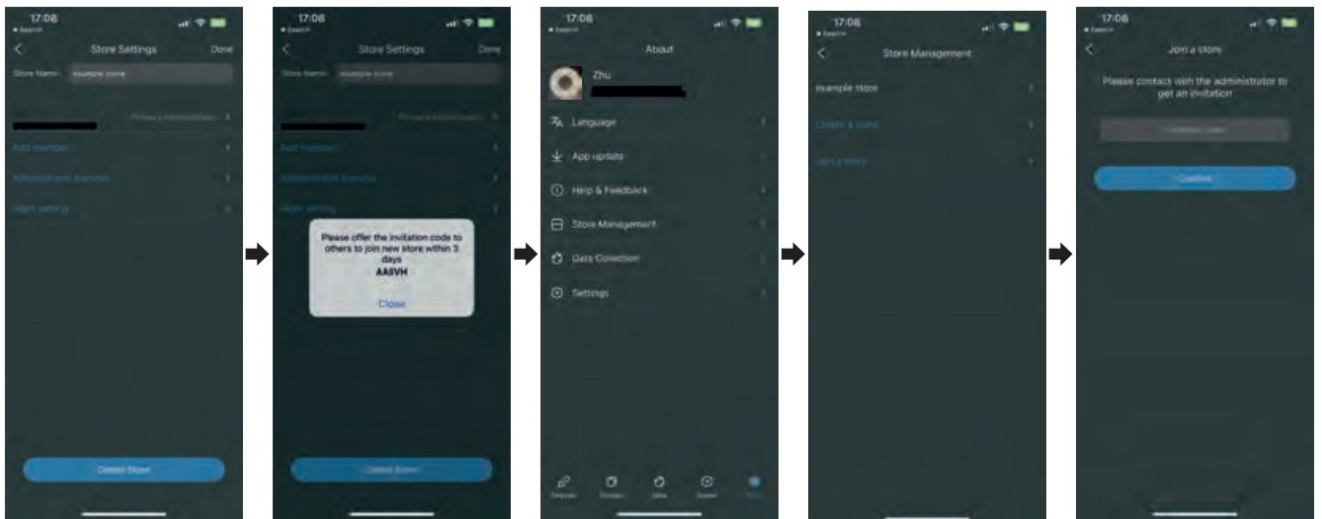
1. Create a store before adding any devices for first- time use.
2. Tap “About”and choose “Store Management” to \create a store.
3. The administrator must create the store first, then invite other members to join.



Share and Join a Store

1. For administrator, choose the store>tap “Add member”>share the invitation code
2. To join a store: choose “Join a store” >Input the invitation code and confirm.

Note: except the administrator, other members do not have the right to add and set up devices and create groups.



Administrator transfer

1. For administrator, choose the store>tap “Administrator transfer”>choose a member
2. Tap “Confirm”, and the administrator will become a common member



Sub-administrator

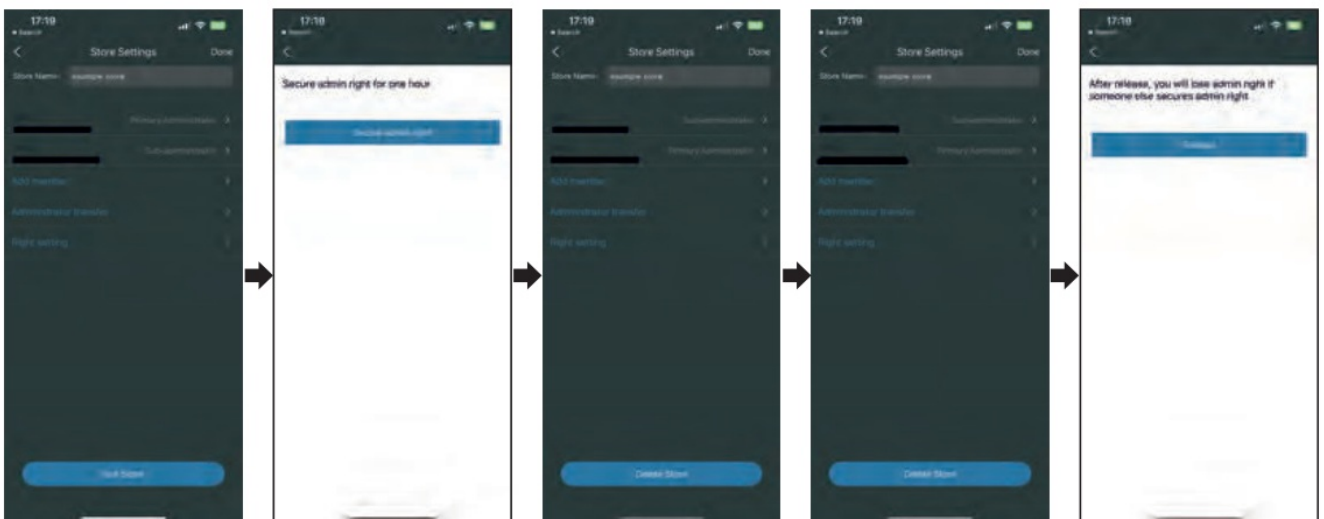
To facilitate the management of lighting in a store, user can set up store members as sub-administrators.

1. Tap a member in the Store Settings page.
2. Tap “Done” and the member will become sub- administrator.



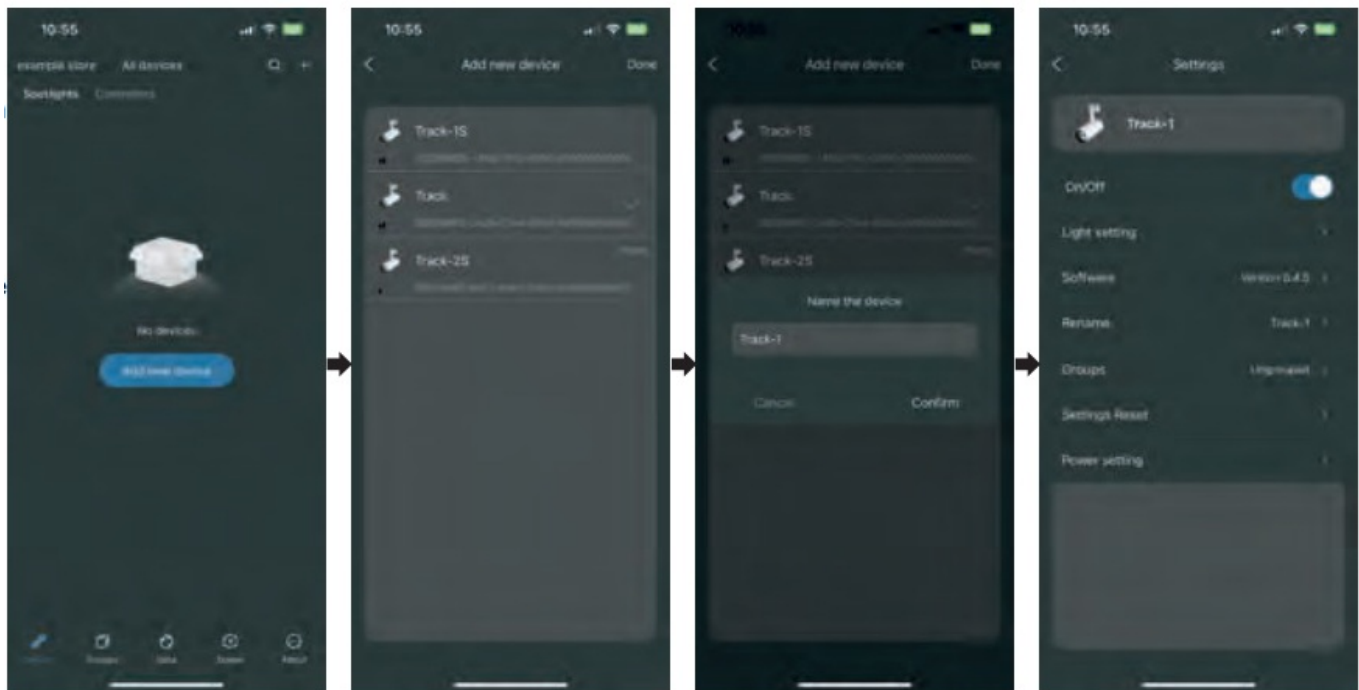
Sub-administrator gains admin right

1. Sub-administrator logs in to the account and tap “Right setting” in the Store Settings page.
2. Tap “Secure admin right” and the sub-administrator gets admin right. The administrator loses admin rights.
3. The sub-administrator secures admin rights, and other sub-administrators cannot obtain admin right within one hour unless the sub-administrator releases admin rights.



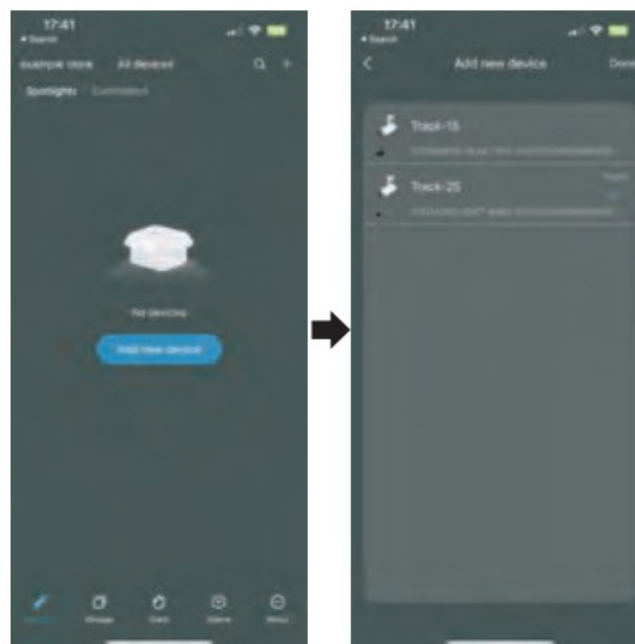
Add new devices

1. Step 1: Tap “Add new device” or “+” on the top right of the App to view all the spotlights within Bluetooth reach.
2. Step 2: Choose device and Tap “Done” The corresponding spotlight will flash five times, enter a name for the light.
3. Step 3: Tap “Confirm”, APP will show the settings page of the spotlight. If “Software update” pops up, please update the software first.



Add multiple devices at one time

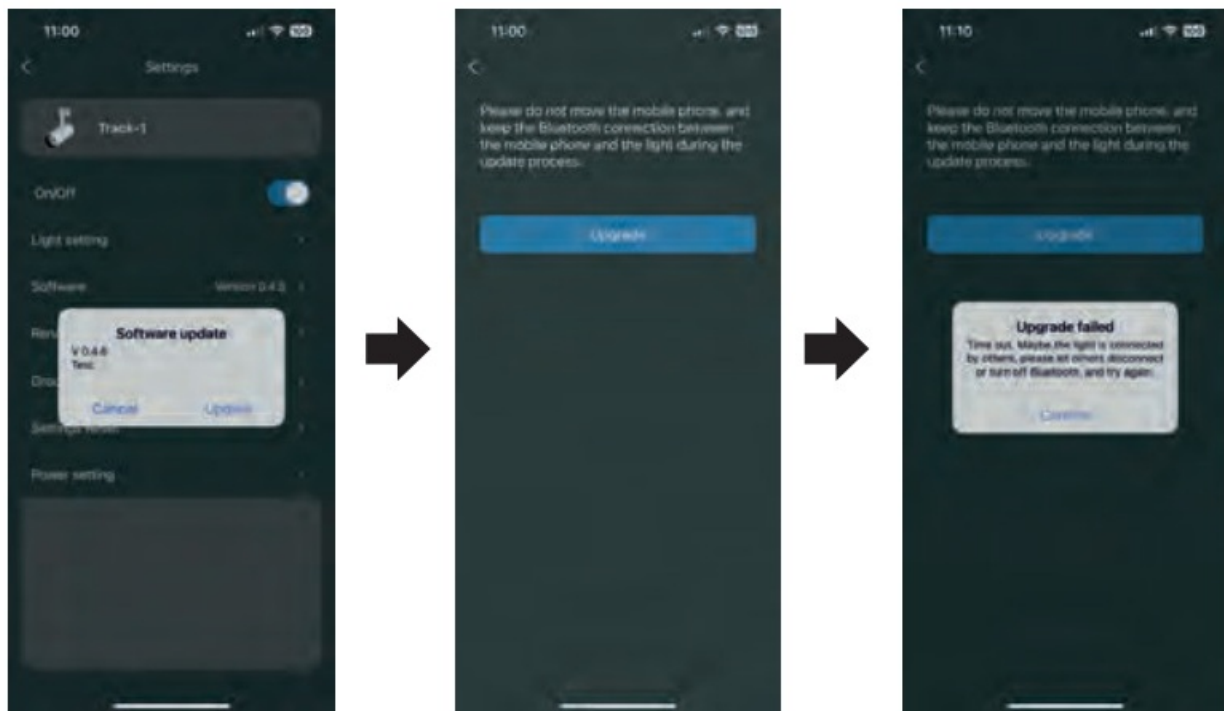
Select multiple devices when adding. Tap “Done” and the App will add selected devices automatically



Software update

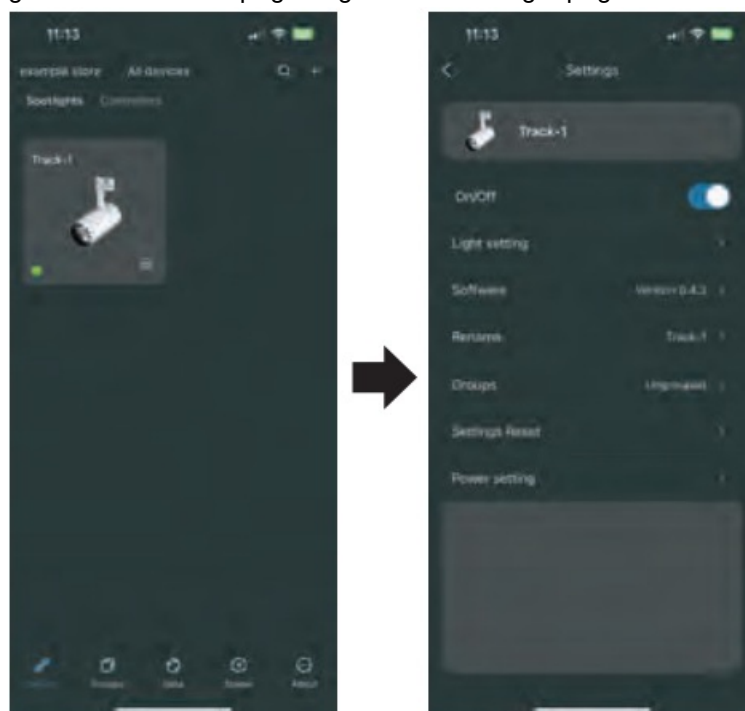
1. Tap “Update” on “Software update” popup box.
2. Tap “Upgrade” to update the software on the light to the latest version, Do not leave until the updating has been finished.

Note: Please keep Bluetooth connection between App and spotlight during update process. If “Upgrade Failed” pops up, maybe there are another user connecting the spotlight. Please let another user disconnect and try again.



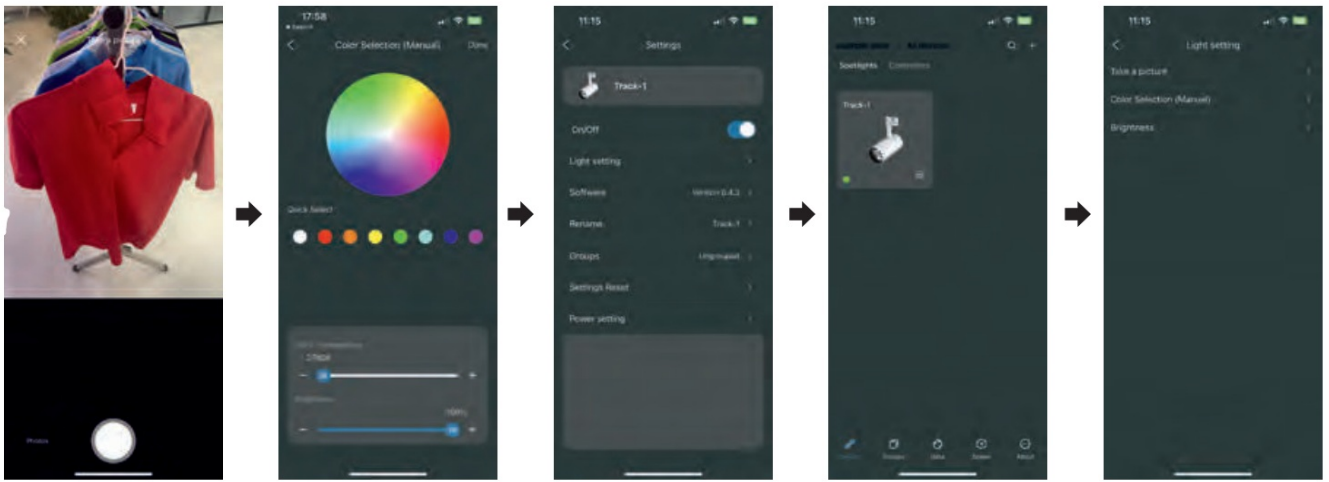
Settings page

Tap settings icon of the light on the Devices page to get onto “Settings” page.



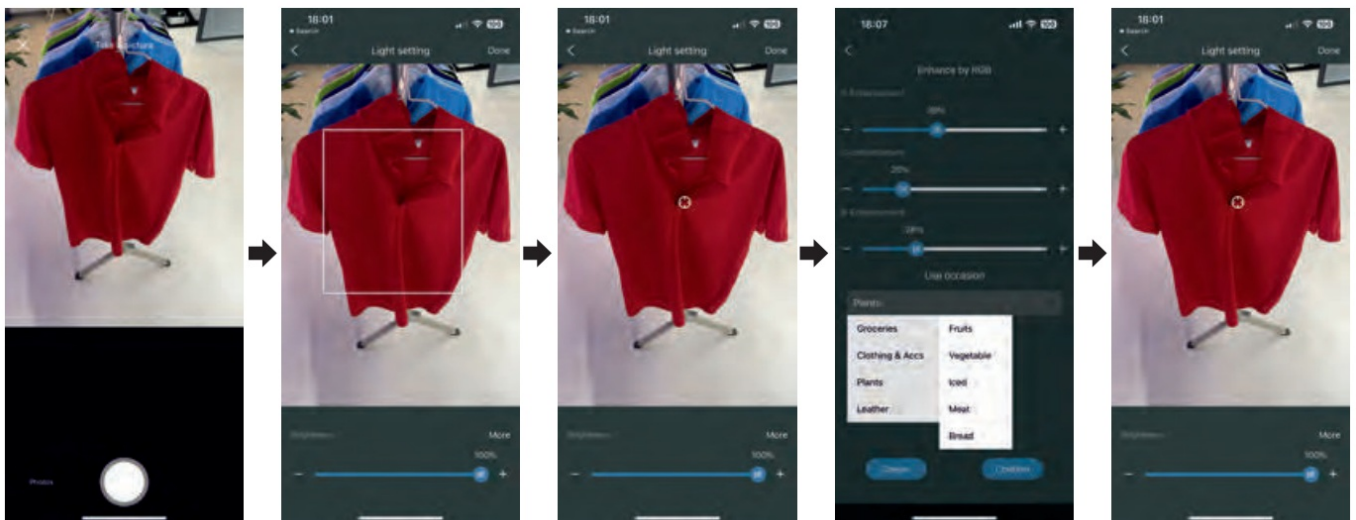
Light Setting

There are two ways to set lighting\ To use Take a picture or Color Selection function, or to change brightness of spotlight, tap item “Light setting” on Settings page, or tap the spotlight icon on the Devices page.



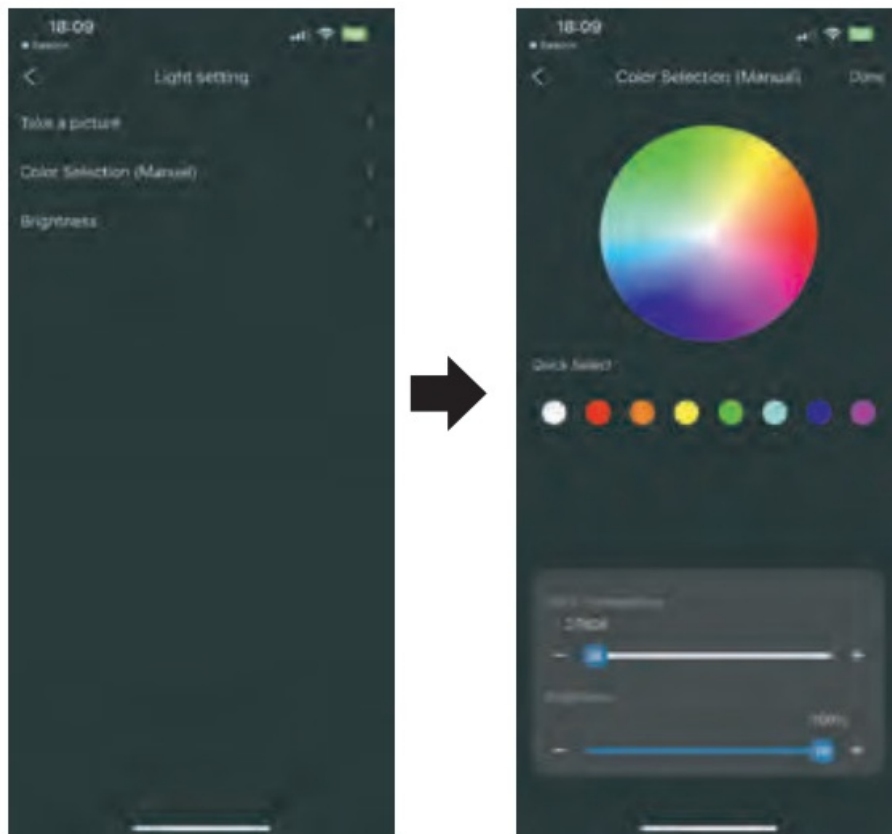
Take a picture

1. Take a picture of the target commodity or choose a photo from albums.
2. “Draw a box” or “tap” on the target color, and the light will be changed accordingly. Usually drawing a box is suitable for a large area of a color or mixed color, and taping is more suitable for choosing one kind of small area color from mixed colors.
3. The brightness can also be adjusted by dragging the slider below.
4. If you are not satisfied with the light, tap “More” to have more choices.
5. Tap “Done” to save the setting.



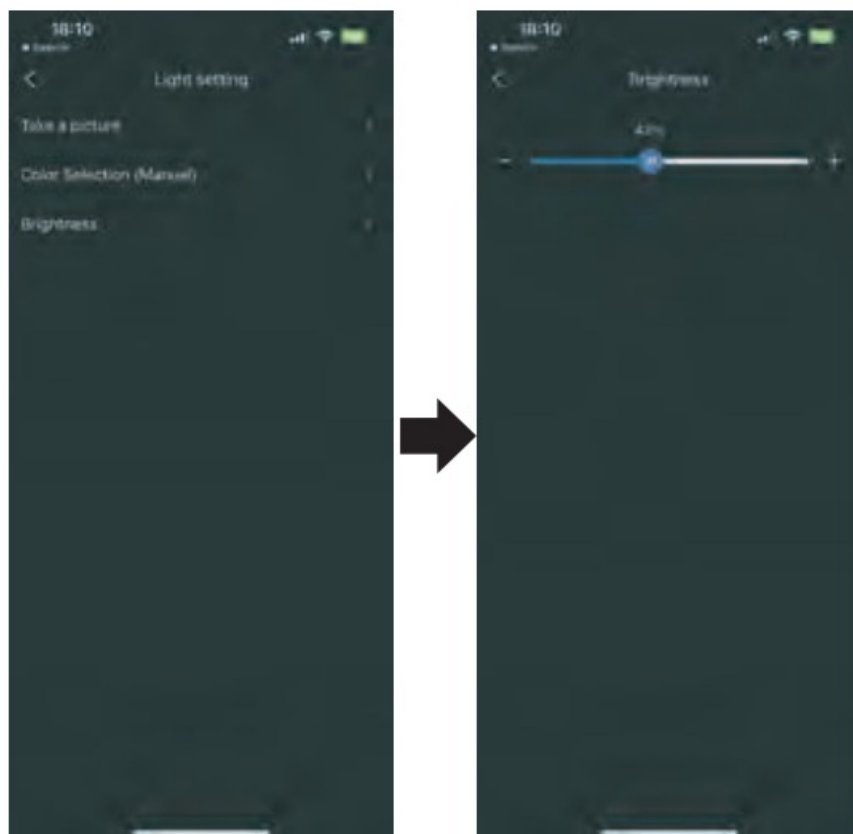
Color Selection

1. Tap “Color Selection” on Lighting setting page
2. User can tune the colour, colour temperature, saturation and brightness of the light
3. Tap “Done” to save the setting



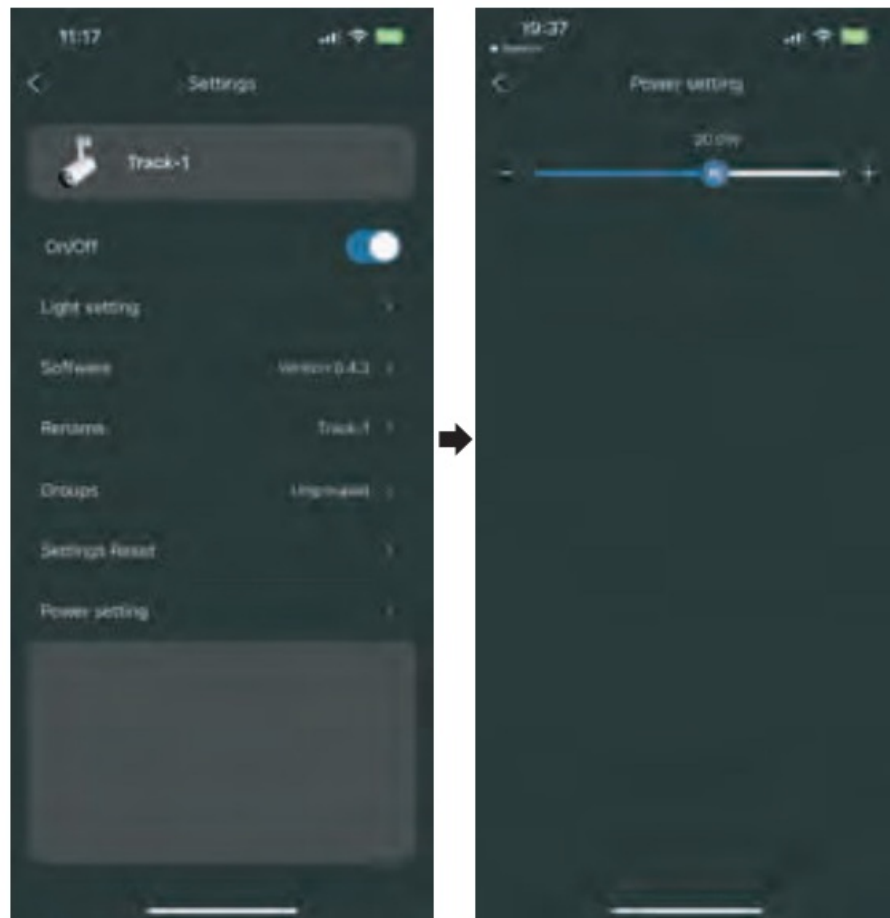
Brightness

1. Tap "Brightness" on the Lighting setting page.
2. Drag the slider to adjust the brightness of the spotlight.



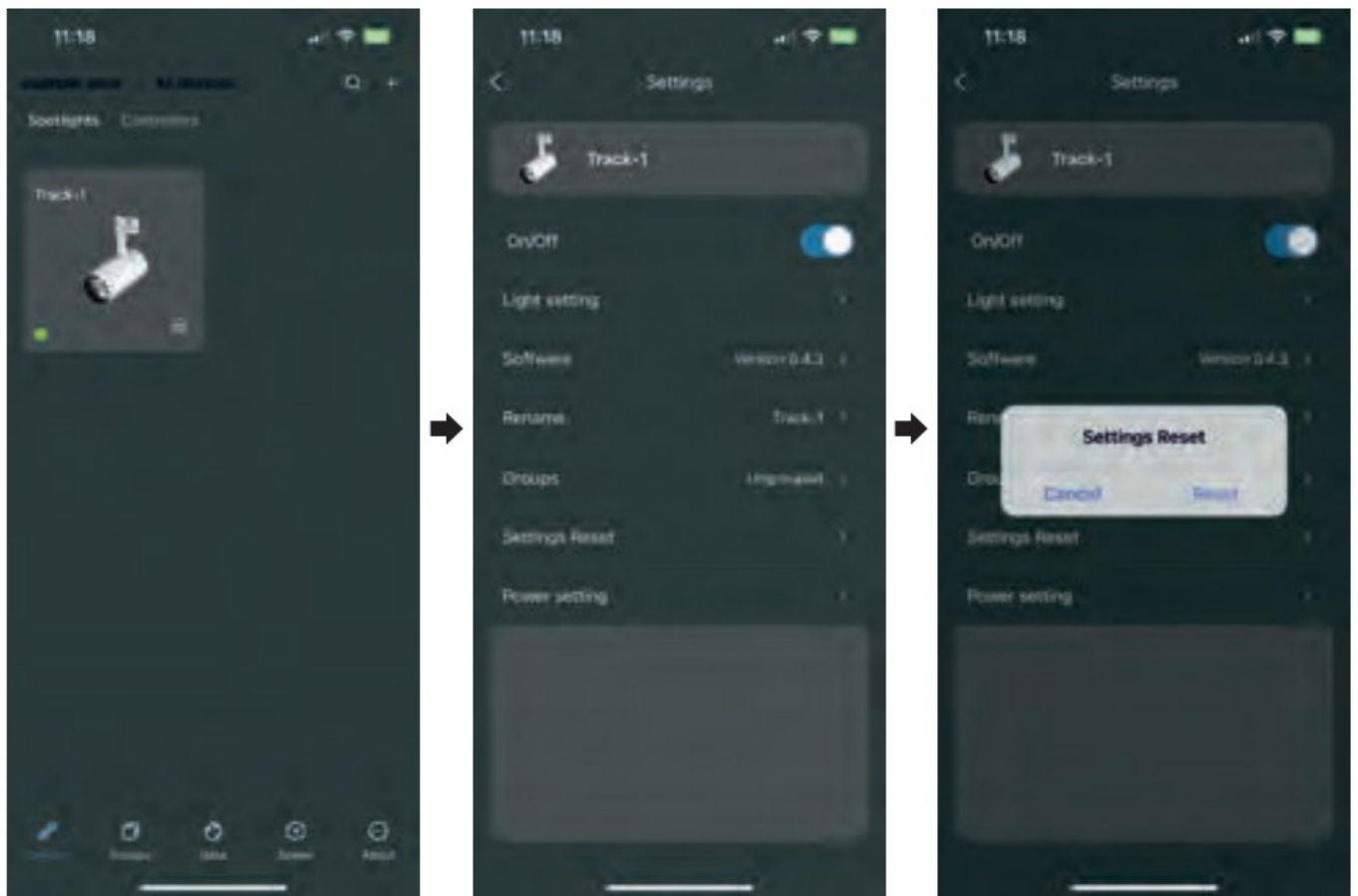
Wattage settings

1. Tap “Wattage settings” on the Settings page.
2. Drag the slider to adjust the output power of the spotlight.



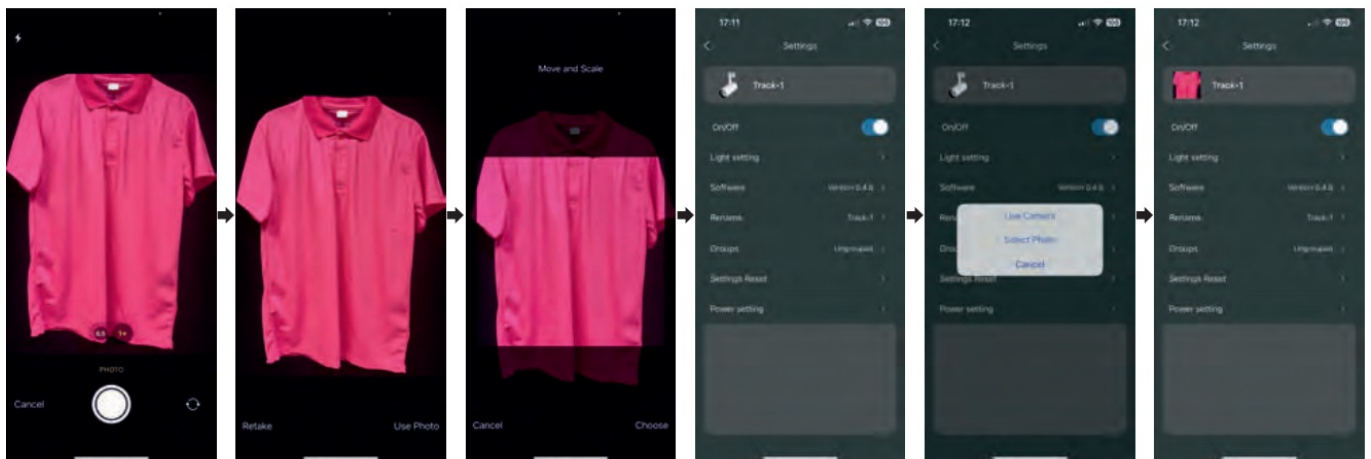
Factory reset

1. Tap setting icon and enter the Settings page.
2. Tap “Factory reset.”
3. Tap “Reset”. The device will be removed from the app and reset to factory default settings.



Picture of device

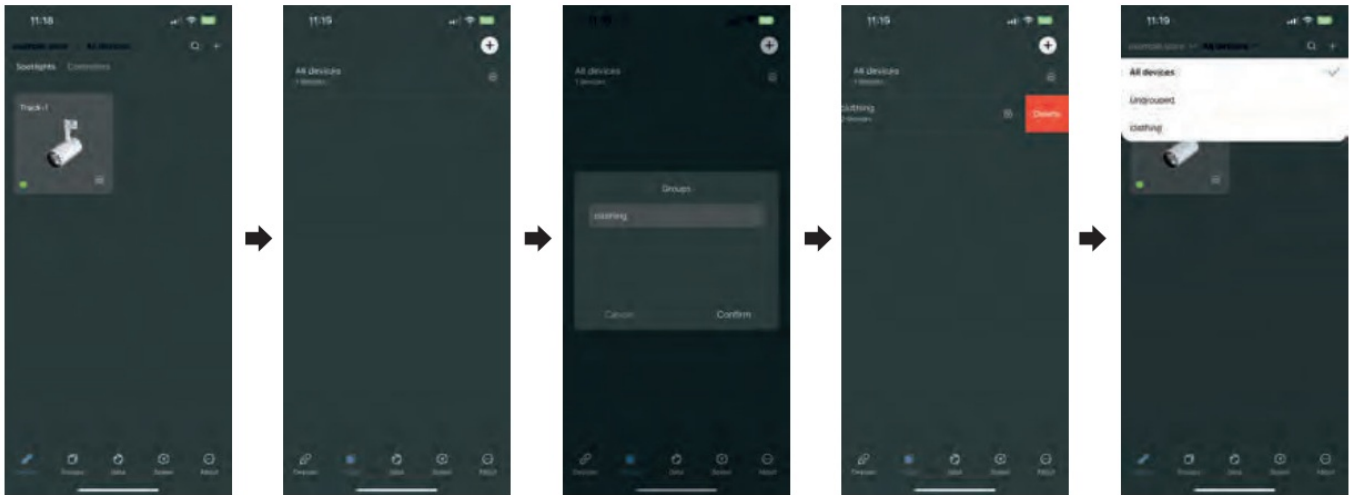
1. Tap the picture of device.
2. Take a picture or choose a photo from albums.
3. Tap “Choose” and the device icon will be set.



Group Control

Create/Delete a Group

1. On the Groups page, tap “+” > Input a group name and tap “confirm” to add a group.
2. If want to delete a group on the list, slide left to delete it.
3. on Devices page, users can switch different groups.



Group Setting

On the Groups page, tap the setting icon to get onto the Group settings page.

Light On/Off :

Turn on or off all lights in the group by APP. In order to avoid turning on or off too frequently, there is a three-second wait between On and Off.

Light setting :

As the same as the single device, but this item here is for all lights in the group.

Energy settings :

When there is a device with the sensor in the group, energy-saving settings can be activated. All devices with sensors and without sensors in the group will be synchronized.

Auto Mode :

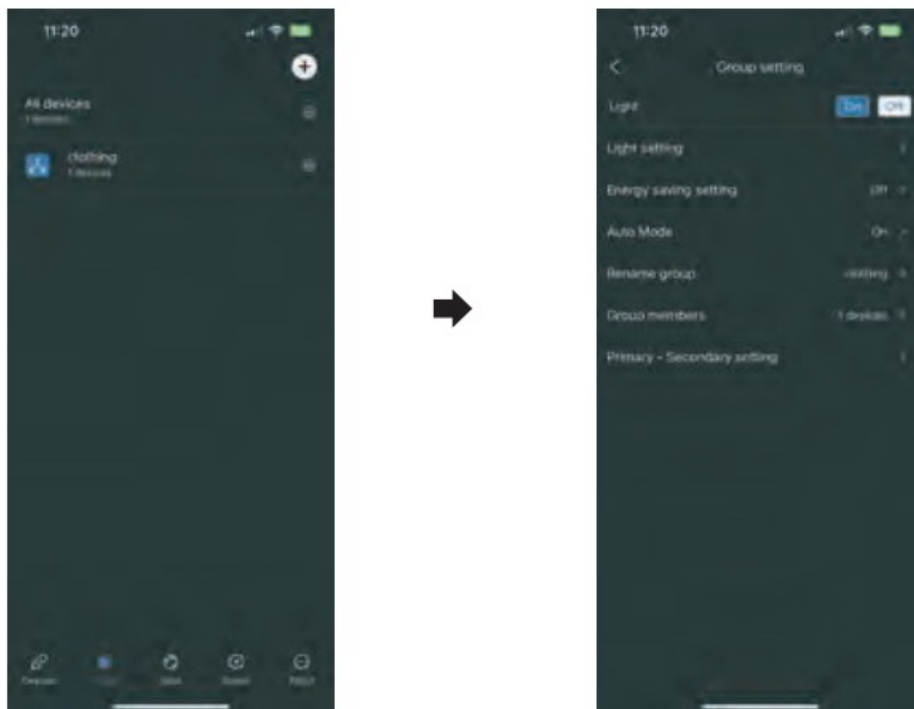
Only device with the sensor is activated

Rename group.

Rename the group.

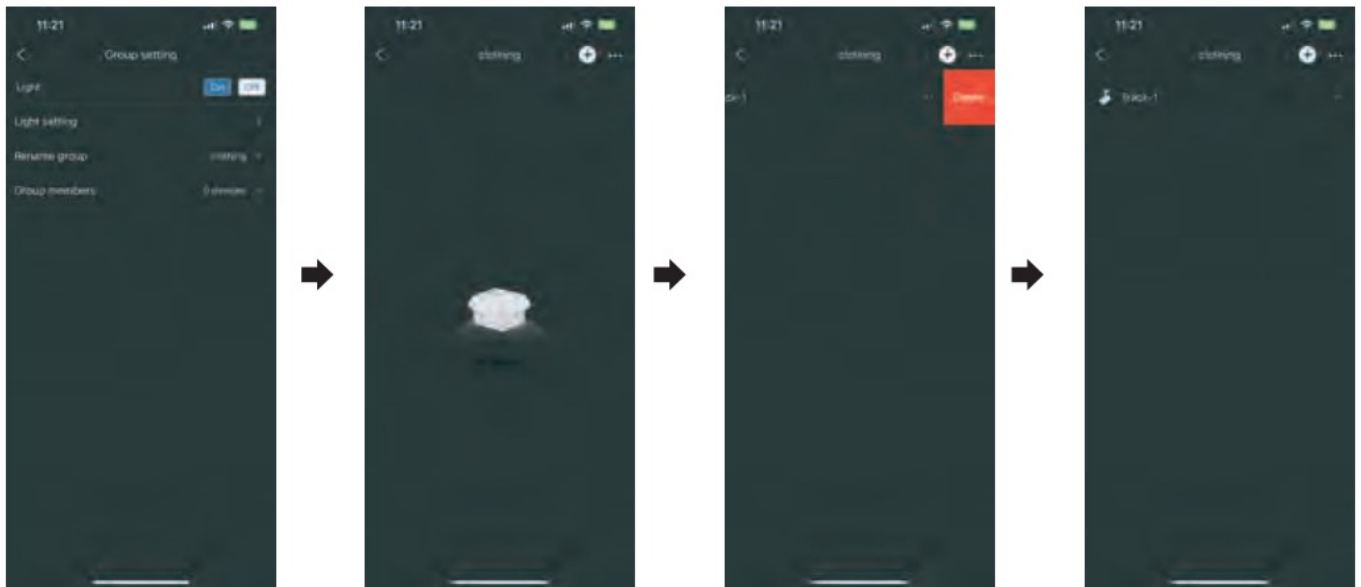
Group members :

Show how many devices in the group. Tap to show the device list.



Group member's management

Tap “Group members” to get into the device list.
 Tap “+” to add new devices to the group.
 Slide left on the device list to delete it from the current group.
 For multi-operation of deleting, tap “...” on the top right corner.



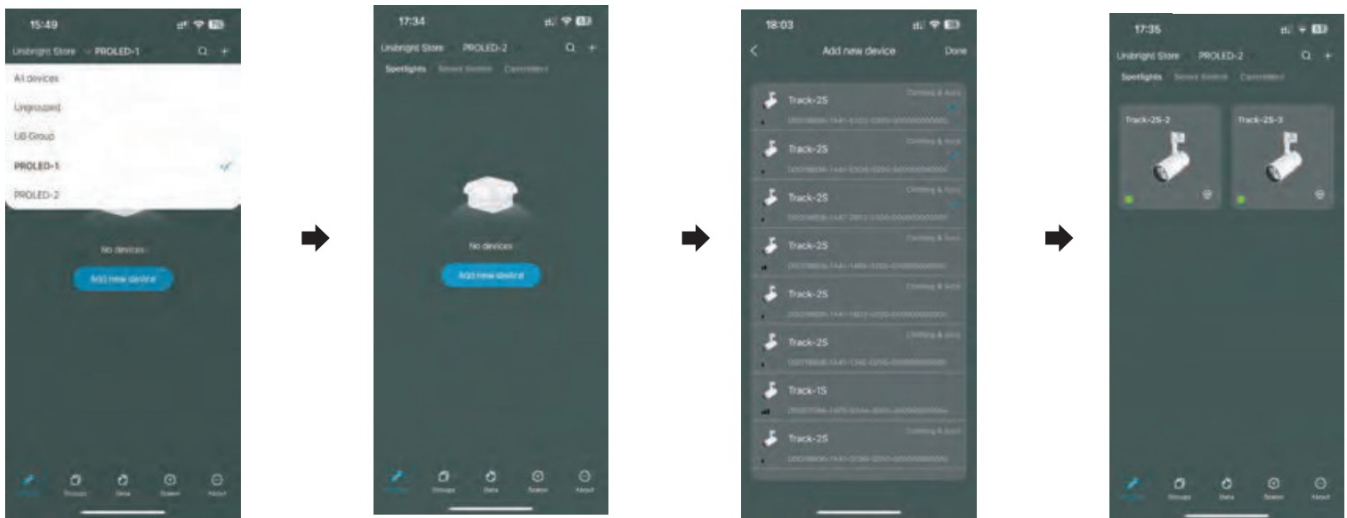
Primary setting

1. Tap “Primary setting” to get onto device list.
2. Select a device as the Primary light and tap “Bind” to complete setting (A device with sensor can be used as Primary light and Without sensor cannot).
3. Set the Primary light to Auto Mode. When the Primary light detects target object, the light changes and the Secondary lights will follow. Set the Primary light to energy-saving mode. When the Primary light enters energy-saving mode, the Secondary lights will follow. That is, if you make any changes for the Primary light, the Secondary lights will follow.



Add devices to groups

In Devices page, select a group. Tap “Add new device” or “+” on the top right of the App to view all spotlights within Bluetooth reach. Choose device and Tap “Done”. Devices selected will be added to the group.

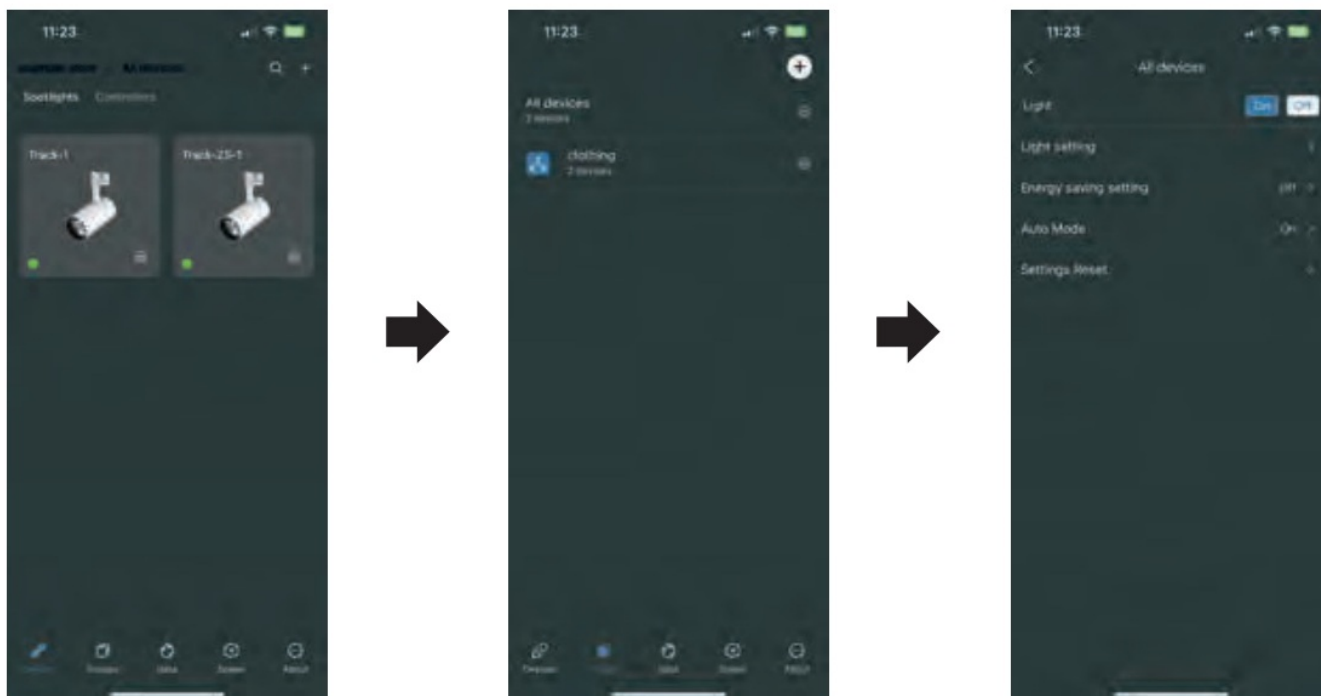


All Devices Control + Scene

All devices control

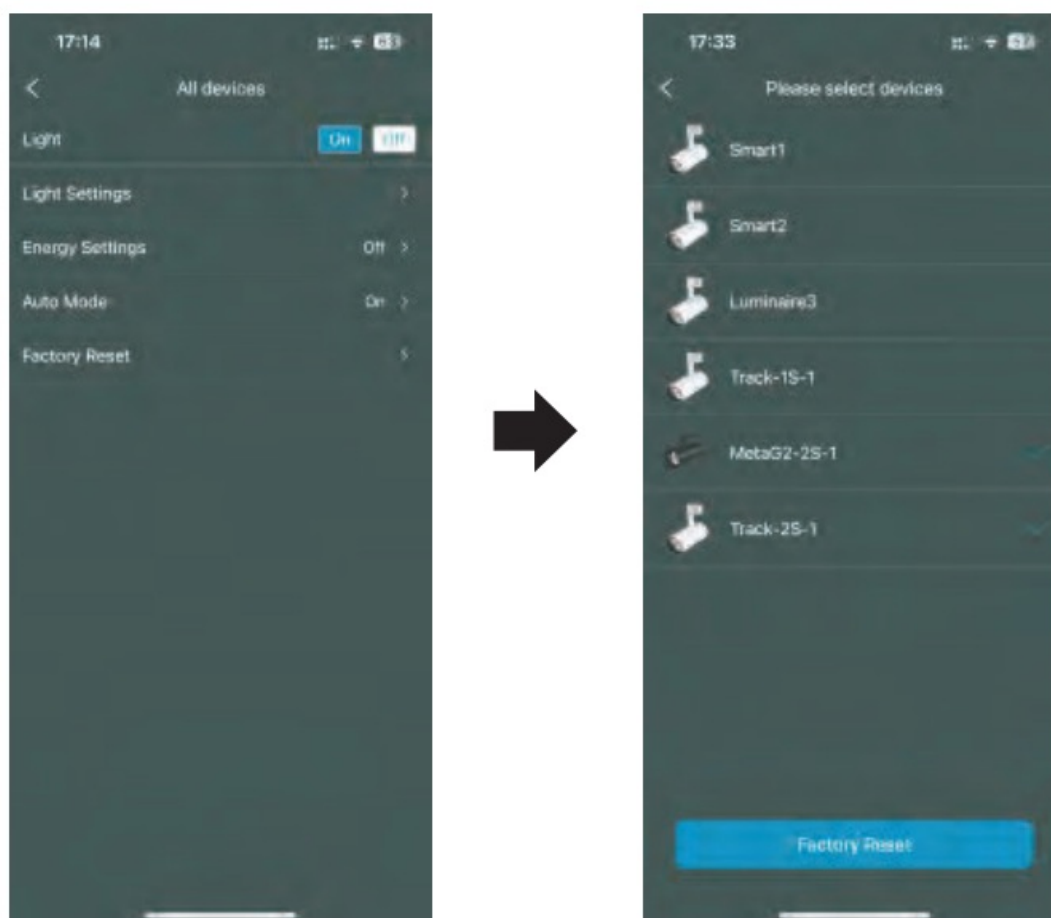
Tap the “Groups” icon to get onto the Groups page. There is an item “All devices” on the top. Tap the setting icon on the All devices settings page.

- Light On/Off: Turn on or off all lights (including grouped and ungrouped) by APP. In order to avoid turning on/off too frequently, there is a three-second wait between On and Off.
- Light setting: As the same as the single device, but this item here is for all lights (including grouped and ungrouped).
- Energy saving setting: for spotlight without sensor, this function is not working.
- Auto Mode: for the spotlight without a sensor, this function is not working



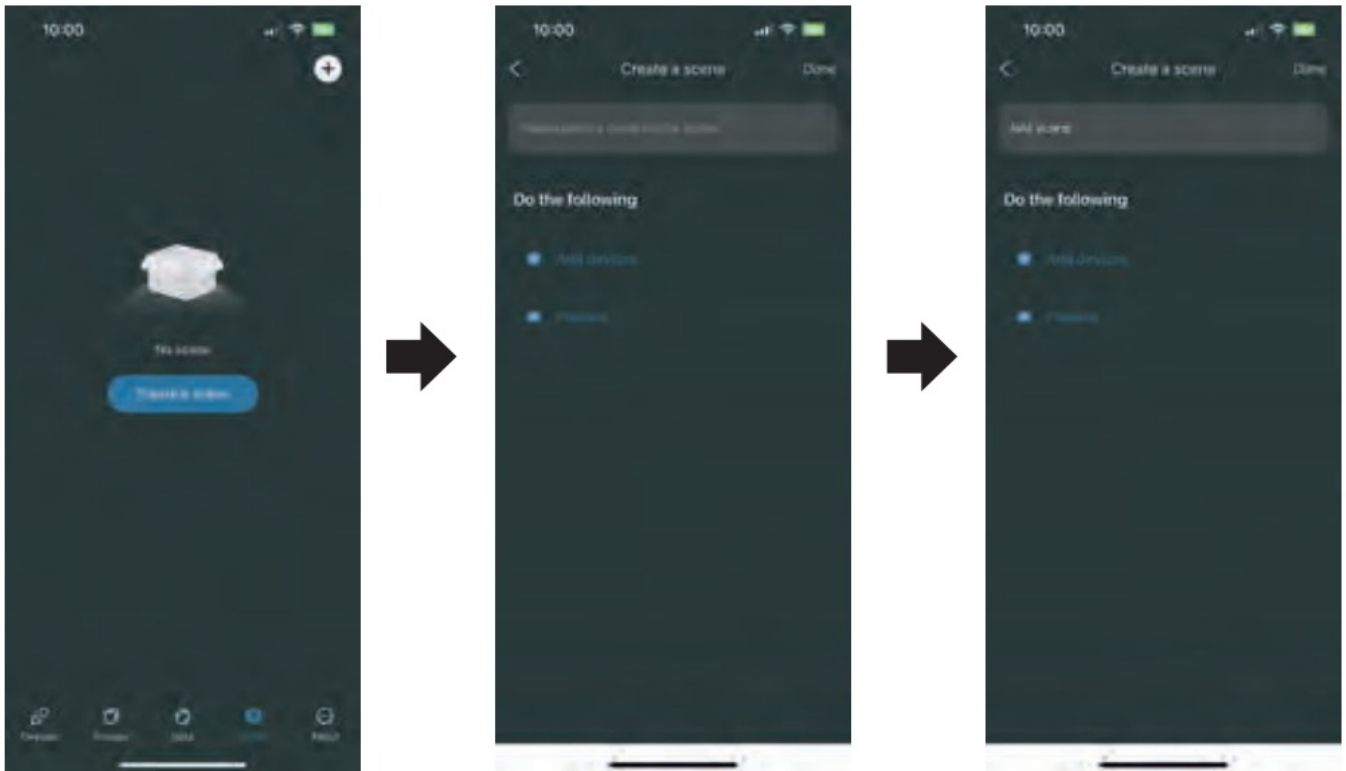
Reset multiple devices at one time

In All devices page, tap “Factory Reset” Select devices and tap Factory Reset



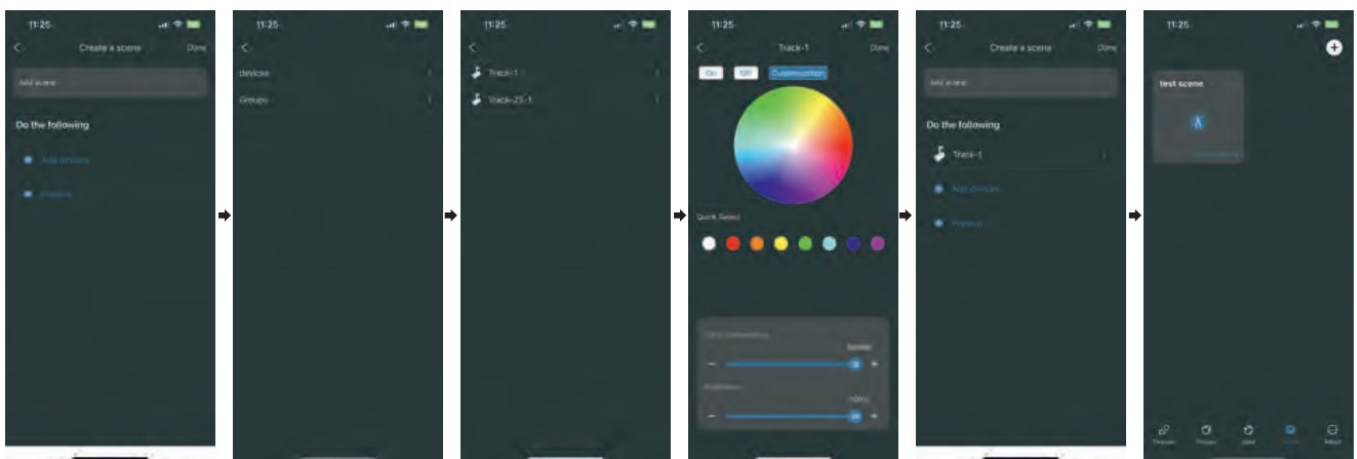
Creat a scene

1. In "Scene" page, tap "Creat a scene" or "+".
2. Enter a name for the scene.



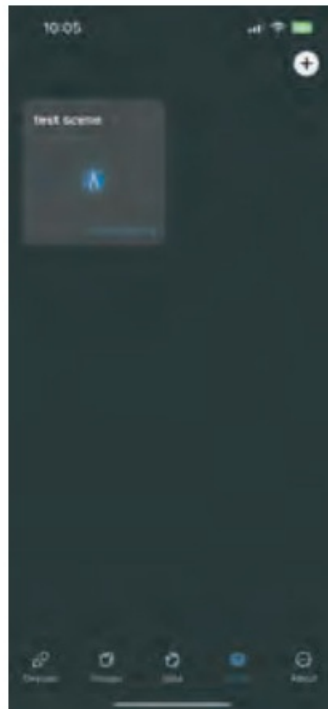
Add devices to the scene

1. Tap "Add devices"> "devices"> tap a device.
2. Select the effect of the device: "On", "Off", or "Customization". For example, tap "Customization" and tune color saturation, color temperature, and brightness of the light.
3. User can add multiple devices or groups in one scene.
4. Tap "preview" to check the effect of the lighting.
5. Tap "Done" to save the settings.



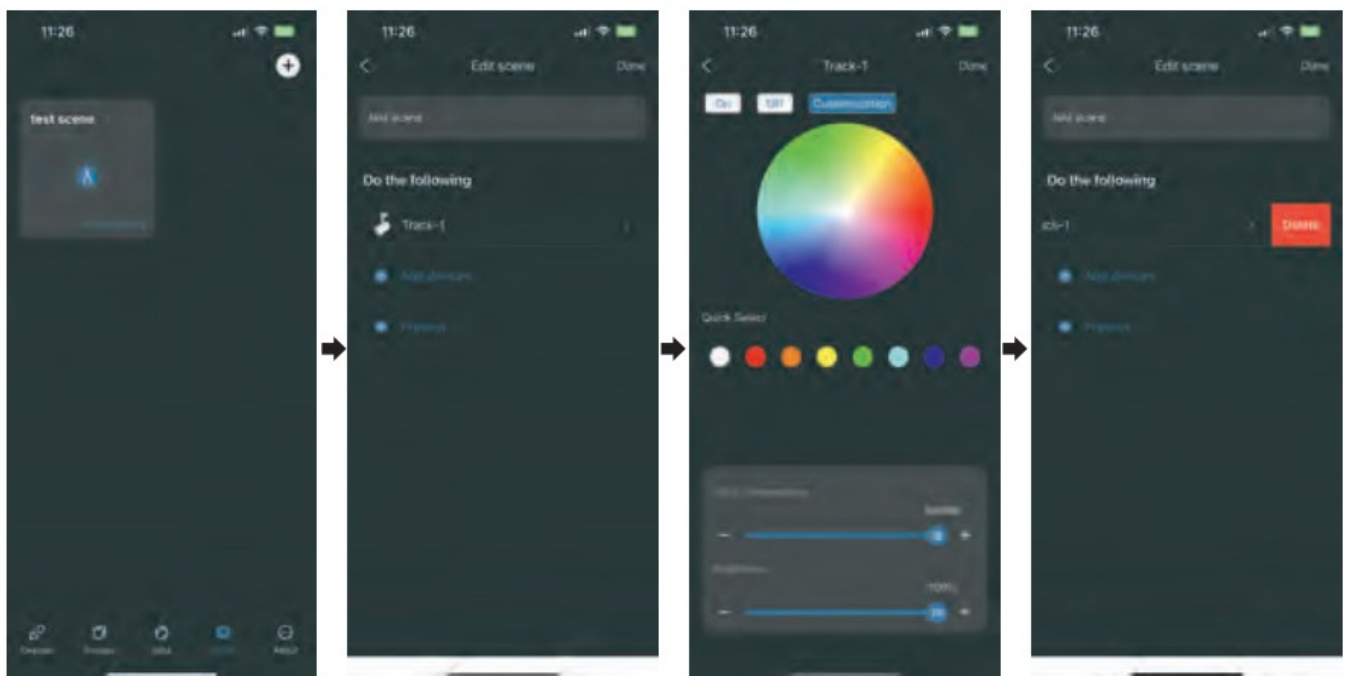
Execute a scene

Tap the scene icon and the lighting will change to the set effect.



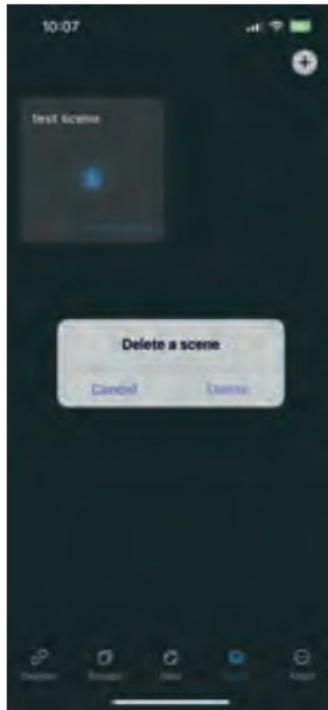
Scene setting

1. Tap “Scene setting” > tap a device. User can modify the effect of the lighting.
2. Slide left on the device list to delete it.
3. Tap “Done” to save the settings.



Delete a scene

1. Tap the scene icon and hold on, and a dialog box pops up.
2. Tap “Delete and delete the scene.”



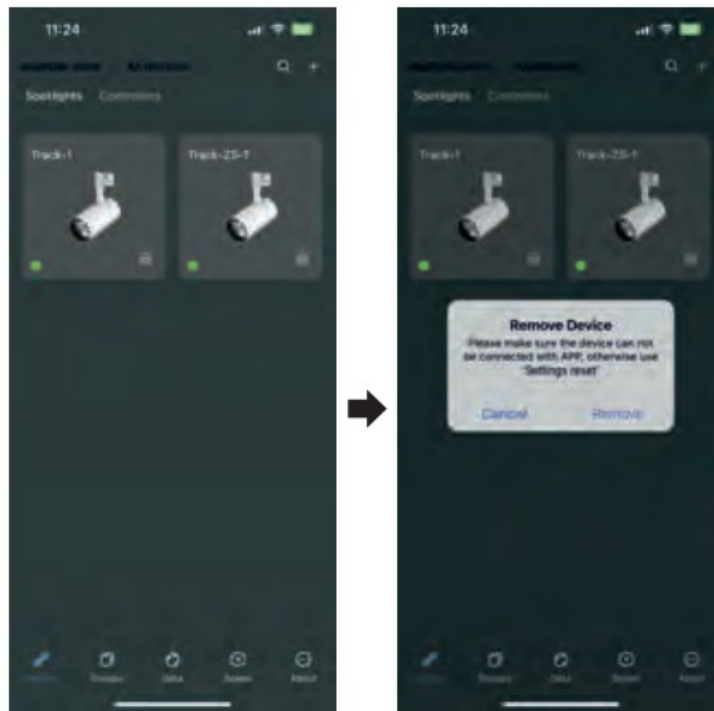
How to deal with disconnected device

1. Tap and hold on the light icon, and a dialog box pops up.
2. Choose "Remove" to remove the light from APP.

Note: Please make sure if the light can be connected with APP. If yes, please remove it with "Factory reset". If you remove the device this way, the only way you can add the device back is reset it physically.

How to reset a device physically?

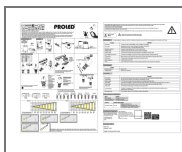
Please press the physical button on the device for more than 5 seconds.



Contact

- UNI-BRIGHT nv
- Belcrownlaan 13-Q • 2100 Antwerp – Belgium
- T +32 (0)3 641 61 40
- F +32 (0)3 645 18 31
- www.proled.com
- Questions & Feedback?
- Any questions & feedback on the Smart Series luminaires or APP. Please email info@unibright.be

Documents / Resources



[PROLED SMFT30B Smart Tracklight Framer](#) [pdf] Instruction Manual
proled-USMFT30B, SMFT30B, SMFT30B Smart Tracklight Framer, SMFT30B, Smart Tracklight Framer, Tracklight Framer, Framer

References

- [User Manual](#)

[Manuals+](#), [Privacy Policy](#)

This website is an independent publication and is neither affiliated with nor endorsed by any of the trademark owners. The "Bluetooth®" word mark and logos are registered trademarks owned by Bluetooth SIG, Inc. The "Wi-Fi®" word mark and logos are registered trademarks owned by the Wi-Fi Alliance. Any use of these marks on this website does not imply any affiliation with or endorsement.