



PROLED L711UDA2 Motion Sensor Installation Guide

[Home](#) » [PROLED](#) » PROLED L711UDA2 Motion Sensor Installation Guide 

PROLED L711UDA2 Motion Sensor Installation Guide



Contents

- 1 Installation manual
 - 1.1 Characteristics
 - 1.2 Safety indices:
 - 1.3 Installation:
 - 1.4 Detection area:
 - 1.5 Dusk- / Dawn-Function
 - 1.6 With dusk- / dawn-function
 - 1.7 With disabled daylight-function
 - 1.8 Mit Tageslicht-Schwelle
- 2 Documents / Resources
 - 2.1 References
- 3 Related Posts

Installation manual

Characteristics

- 12 VDC motion sensor
- Detection area 12 x12 m
- Average movement speed for detection 0,5 – 1 m/s
- Holstein adjustable 5 sec till 30 min in steps
- Detection area adjustable 25 % – 100 % in steps
- Dimming signal 0-10 V
- Dusk – Dawn-Function

Warning:

1. For indoor use only. If used partially or fully outside, motion detection failures can occur.
2. Keep the sensor away from vibrations, air conditions, smoke extractors or similar, to avoid unwanted trigger.
3. Keep min. distance of 2m to microwave sensors or 1,5 m to other wireless devices, such as routers, to avoid possible radio interference.
4. Distance detection is based on a 1,65 m high person in an open area. Function results depends on height of persons, moving speed, mounting height and real life situation.
5. We do recommend that a qualified electrician should be used to install this product.
6. Please ensure that the packaging is disposed in a safe environment.

Safety indices:

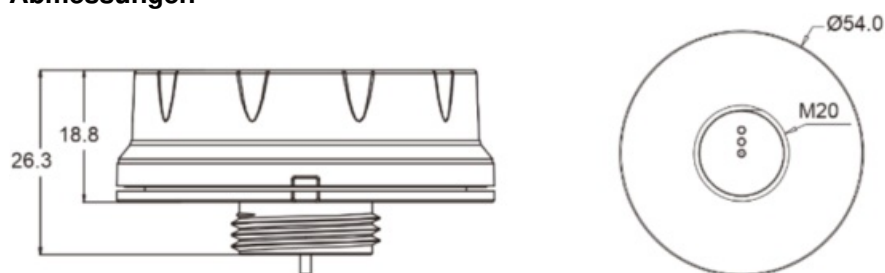
Be sure to have a qualified electrician complete installation. The customer is not entitled to claim for any lights installed without observing European safety directives. The manufacturer is then discharged from liability when damage is caused by improper use or installation. If any luminaire is subsequently modified, the person responsible for the modification shall be considered as manufacturer. Do not cover lamps with heat insulating materials. For indoor use only. Protection class IP20.

Installation:

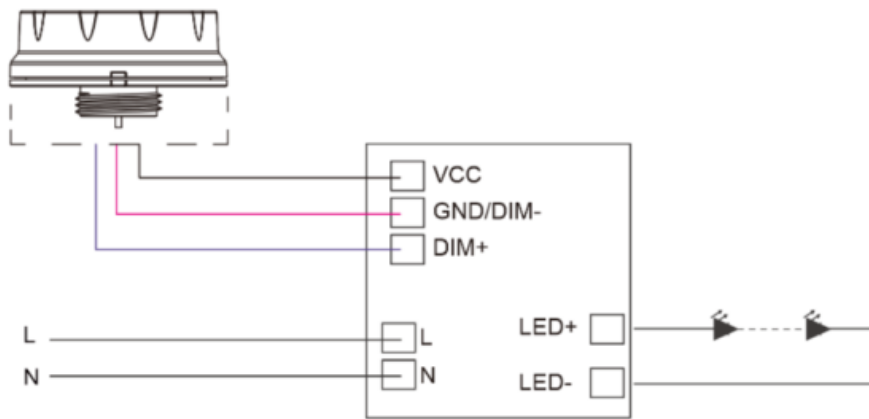
Please follow the sequence of installation step by step. Non-observance can lead to damage of LED.

1. Switch off the electricity at the mains before commencing installation or lamp change and (if a fuse box is installed) remove the appropriate circuit fuse to avoid accidental switching on of the mains supply.
2. Remove the covering cap in the middle of the light with a big screwdriver.
3. Install the motion sensor and rut it clockwise, until it is tight.

Abmessungen



Schoolchild:



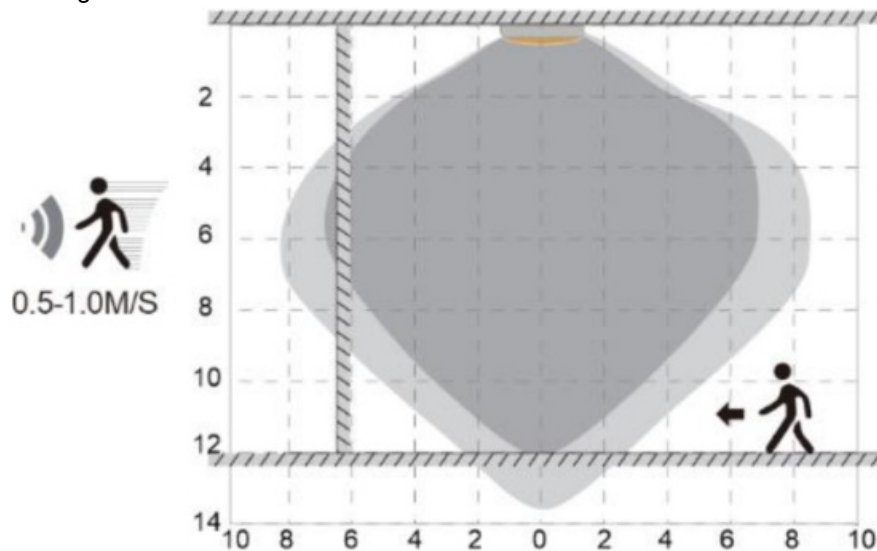
Black/white +12 V = +12VDC Input

Pink GND/DIM- = GND

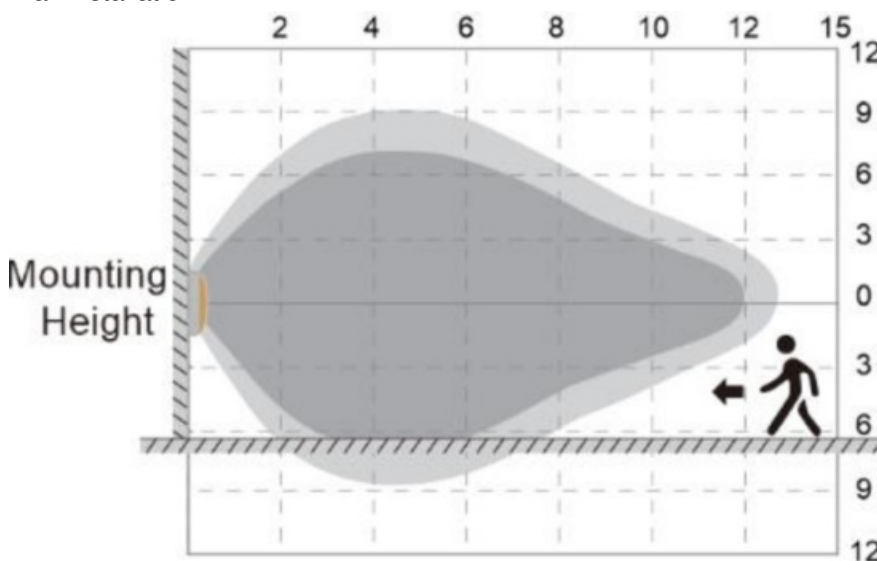
Violet DIM+ = 0/1 – 10 DIM+

Detection area:

Ceiling installation



Wall installation

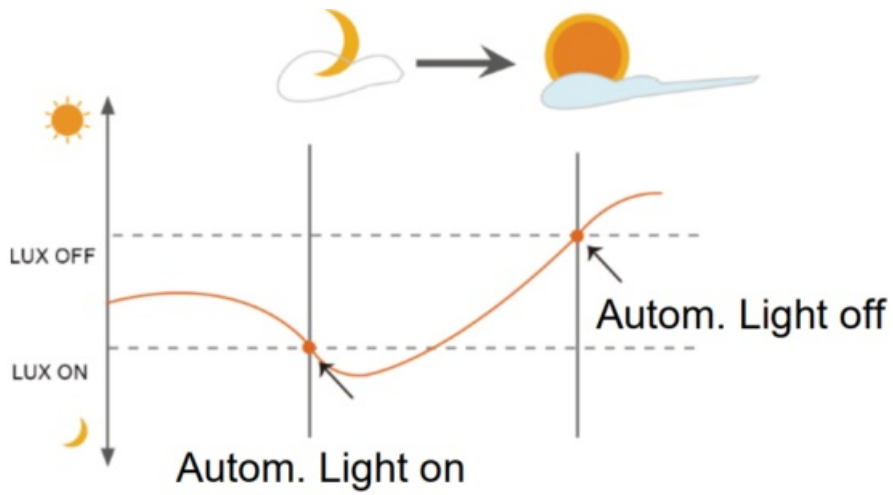


Max. mounting height is 12 m, to allow 100% detection.

Dark grey area shows a good detection area.

Light grey area shows a possible detection area.

Dusk- / Dawn-Function



Pre-settings for Dusk- / Dawn-Function:

Standby dimming can be set to 10%, 20% or 30%.

Daylight shareholder can be set to 30 lux / 50 lux / 80 lux or 120 lux.

With dusk- / dawn-function

- When insufficient ambient brightness is detected, sensor turns on light to standby dimming value, even if motion is not detected.



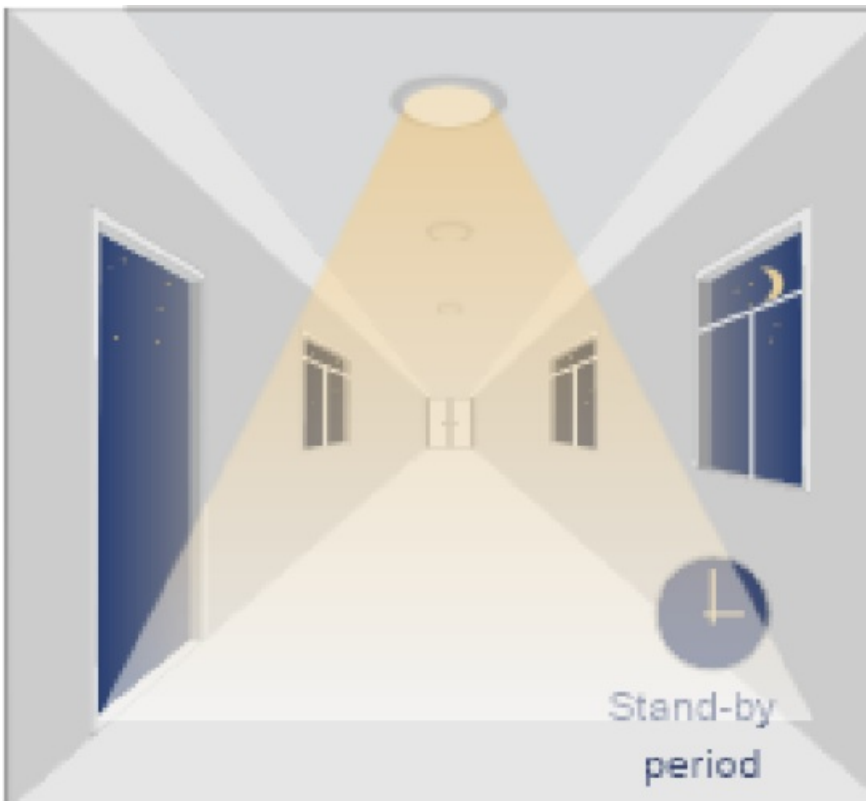
- If motion is detected, the light will be turned on till 100%.



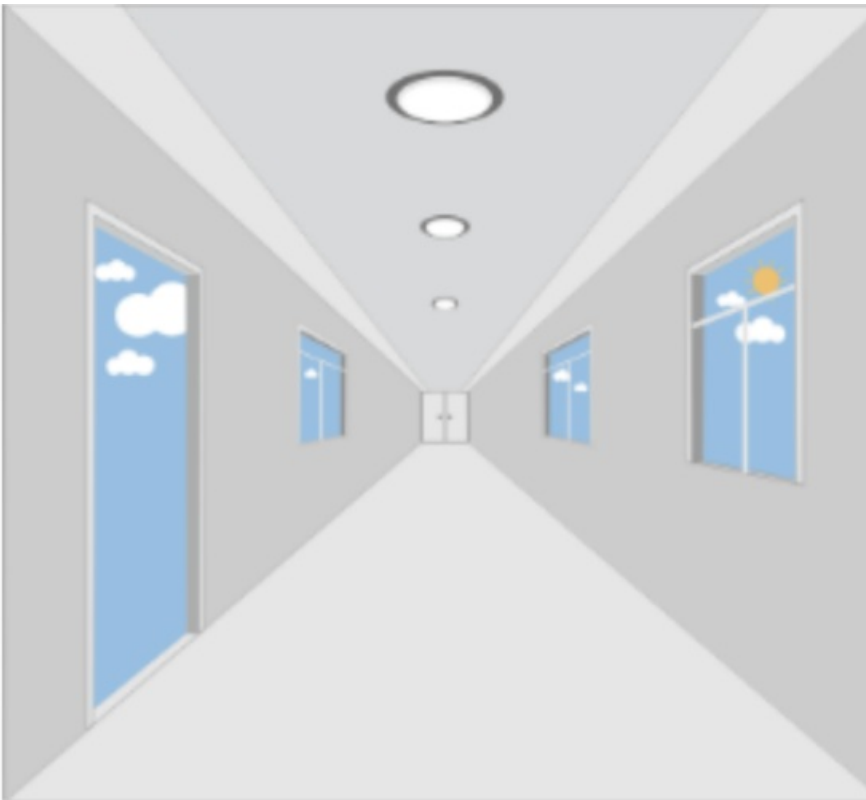
- When no motion will be detected, the light keep on 100% brightness for the stetted hold time.



- After hold time period, the light will be dimmed to the standby setting and kept it always.

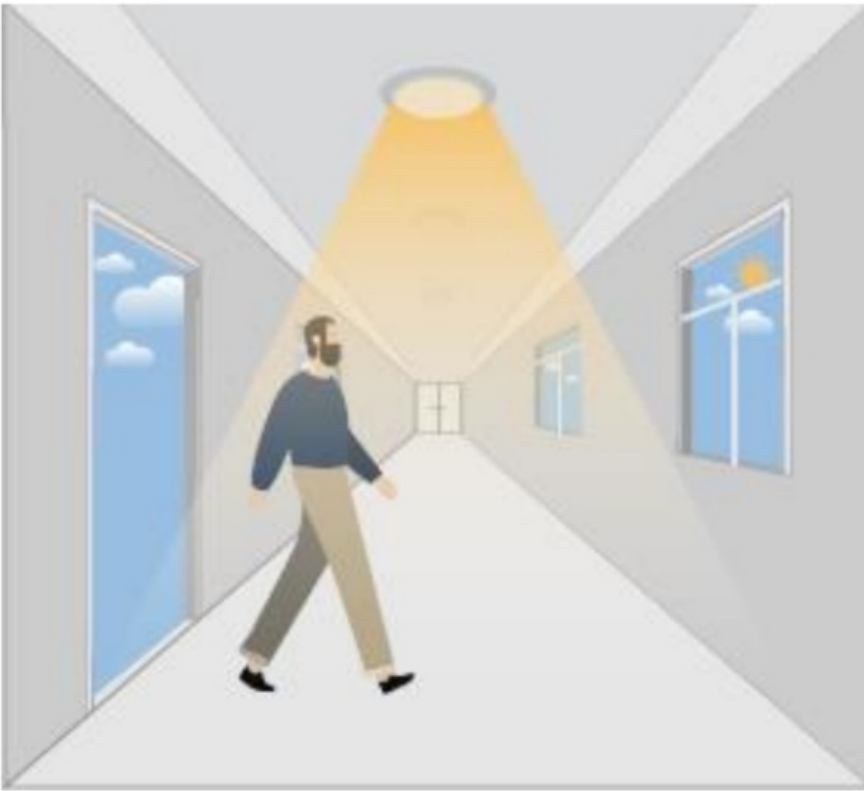


- As long as sufficient ambient light is existing, sensor will turn off light.



With disabled daylight-function

- If motion will be detected, light will be set to 100% brightness.



- When no motion will be detected, the light keep on 100% brightness for the stotted hold time.



- After hold time period, the light will be dimmed to standby setting and kept it always.

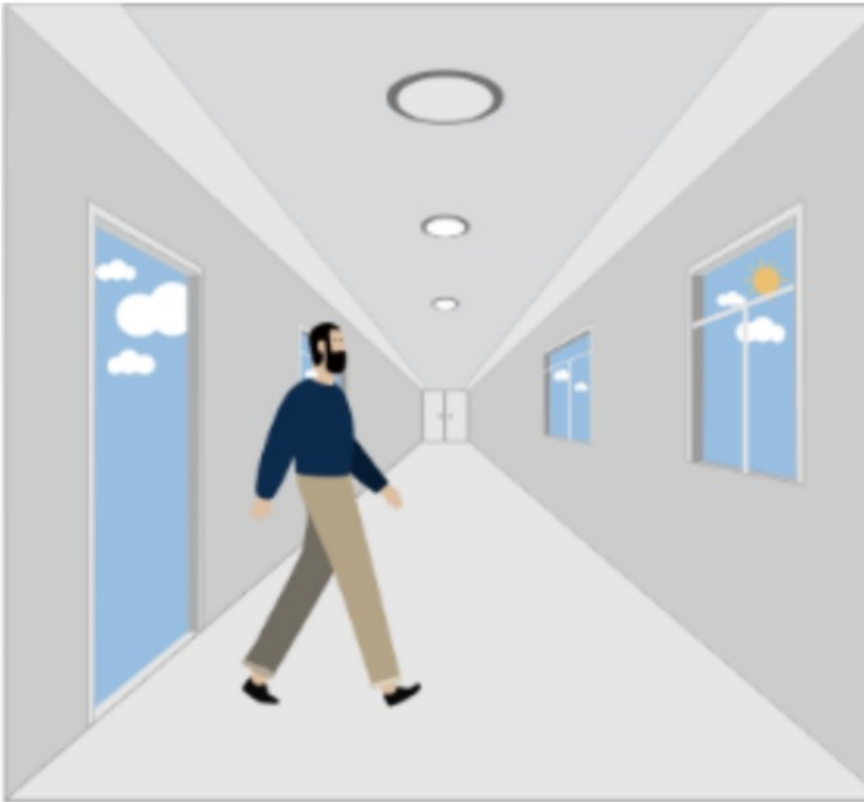


- Sensor switch off the light automatically after the standby time.



Mit Tageslicht-Schwelle

- As long as enough ambient brightness is existing, the light will be off, even if motion will be detected.



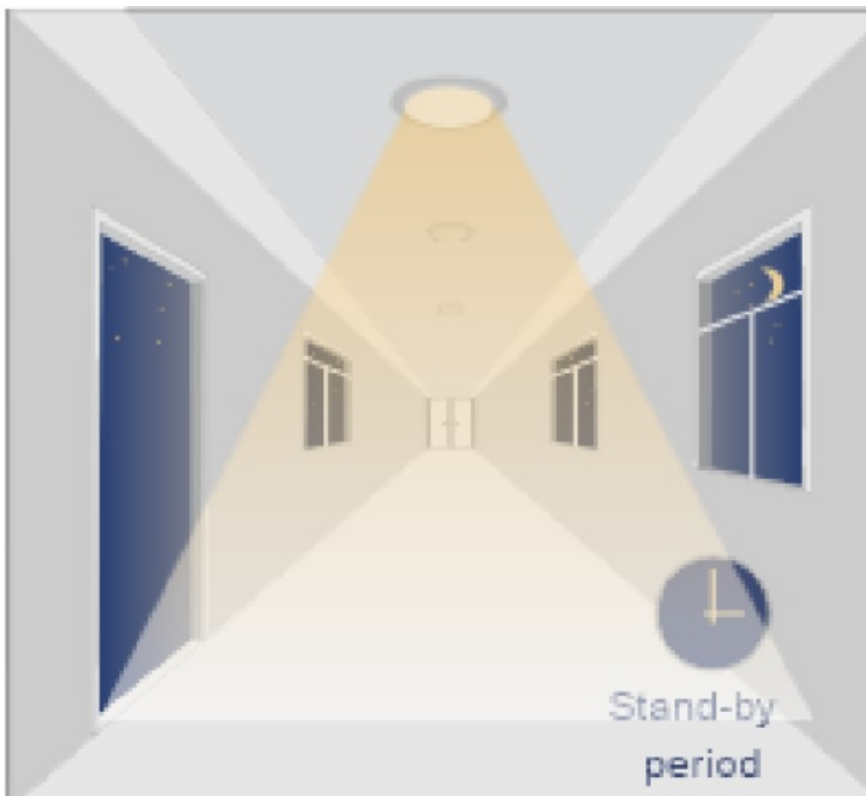
- When motion is detected and the ambient brightness is too low, the light will be turned on to 100%.



- When no motion is detected, the light keep on 100% for the hold time.





- The light will be dimmed to standby value, after the hold time. When the standby-time is stetted to 0 sec., sensor switch off the light after the hold time.




- Sensor turns automatically off the light after the standby-time, when no motion is detected.




CE   MBN GmbH, Balthazar-Schiller-Str. 3, 86316 Fried berg – Germany
www.proled.com

PROLED®

Documents / Resources

	<p>PROLED L711UDA2 Motion Sensor [pdf] Installation Guide L711UDA2, L711UDA2 Motion Sensor, Motion Sensor, Sensor</p>
---	---

References

-  PROLED: proled.com
- [User Manual](#)

[Manuals+.](#) [Privacy Policy](#)

This website is an independent publication and is neither affiliated with nor endorsed by any of the trademark owners. The "Bluetooth®" word mark and logos are registered trademarks owned by Bluetooth SIG, Inc. The "Wi-Fi®" word mark and logos are registered trademarks owned by the Wi-Fi Alliance. Any use of these marks on this website does not imply any affiliation with or endorsement.