

**PROLED**

PROLED L51313  
Glass Touch PWM  
Dimmer RGB 3  
Channel



# PROLED L51313 Glass Touch PWM Dimmer RGB 3 Channel User Manual

[Home](#) » [PROLED](#) » PROLED L51313 Glass Touch PWM Dimmer RGB 3 Channel User Manual 

## Contents

- [1 PROLED L51313 Glass Touch PWM Dimmer RGB 3 Channel](#)
- [2 Limited Warranty](#)
- [3 Product Description](#)
- [4 Technical Data](#)
- [5 Specifications](#)
- [6 External Dimensions](#)
- [7 Interface Specifications](#)
- [8 Installation manual](#)
- [9 Frequently Asked Questions](#)
- [10 Documents / Resources](#)
  - [10.1 References](#)
- [11 Related Posts](#)

# PROLED<sup>®</sup>

PROLED L51313 Glass Touch PWM Dimmer RGB 3 Channel



## **Preface**

Thanks for choosing PROLED GLASS TOUCH PWM DIMMER RGB 3-CHANNEL. Before installation and use, we strongly recommend you to read this manual carefully. If the device has been damaged during transport, please report this to your supplier immediately. Please don't take any action without contacting your supplier first

## **Limited Warranty**

In case of quality problems, we provide free repair or replacement within one year from the day of purchase, if this product has been used properly in accordance with the user's manual, except in following cases:

1. Any defects caused by wrong operation.
2. Any damages caused by unauthorized removal, maintenance, modifying, incorrect connection and replacement of chips.
3. Any damages due to transportation, vibration etc. after purchase.
4. Any damages caused by earthquake, fire, lightning, pollution and abnormal voltage.
5. Any damages caused by negligence, inappropriate storing at high temperatures and humidity or near harmful chemicals.
6. Product has been updated

## **Safety Warnings**

1. Please don't install this controller during thunderstorms, intense magnetic or high-voltage electrical fields.
2. To reduce the risk of component damage and fire caused by a short circuit, make sure, that all connections are correct.
3. Always be sure to mount this unit in an area with proper ventilation to avoid overheating.
4. Check voltage and power requirements of the controller as well as the polarity of the power supply.
5. Never connect any cables while power is on and always assure correct connections to avoid short circuits before switching on.
6. Never attempt any repairs yourself; otherwise the manufacturer's warranty will be void.

For update information, please consult your supplier.

## Product Description

PROLED GLASS TOUCH PWM DIMMER RGB 3-CHANNEL allows controlling of Luminaires, Panels, Flex Strip etc., which have 3-channel inputs. The controller is operated over a optical ambitious, touch sensitive Glass-Touch-Survey. Easy connection, as well as the intuitive usage, round up a positive appearance of the product.

## Technical Data

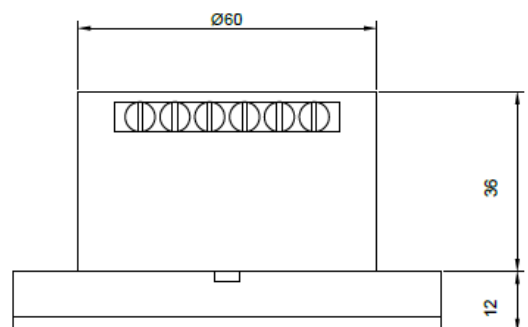
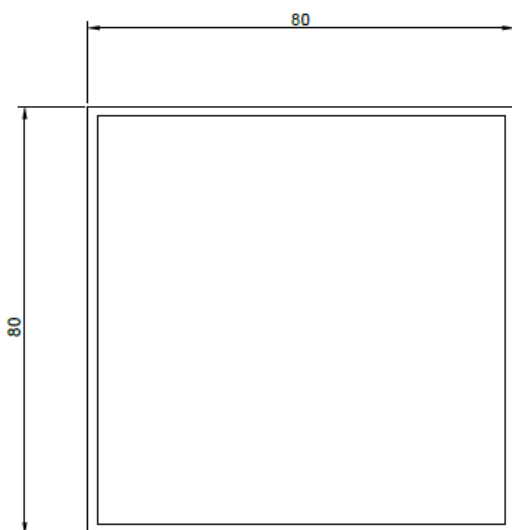
- Model PROLED GLASS TOUCH PWM DIMMER RGB 3-CHANNEL
- Input Voltage DC 12 V / 24 V
- Output Voltage DC 12 V / 24 V
- Output 3 Channel with 4A each, CA
- Power consumption < 1 W
- Power output at 12V <144 W ; at 24V <288 W
- Ambient temperature -10°C – 45°C
- Dimensions 80 mm × 80 mm x 48 mm (LxBxH)
- Net-Weight 130 g

## Specifications

1. Nearly smooth adjustment of mixed colour
2. 19 dynamic and 20 static programmes
3. Suitable for a Ø68 mm electrical dose
4. Touch sensitive survey



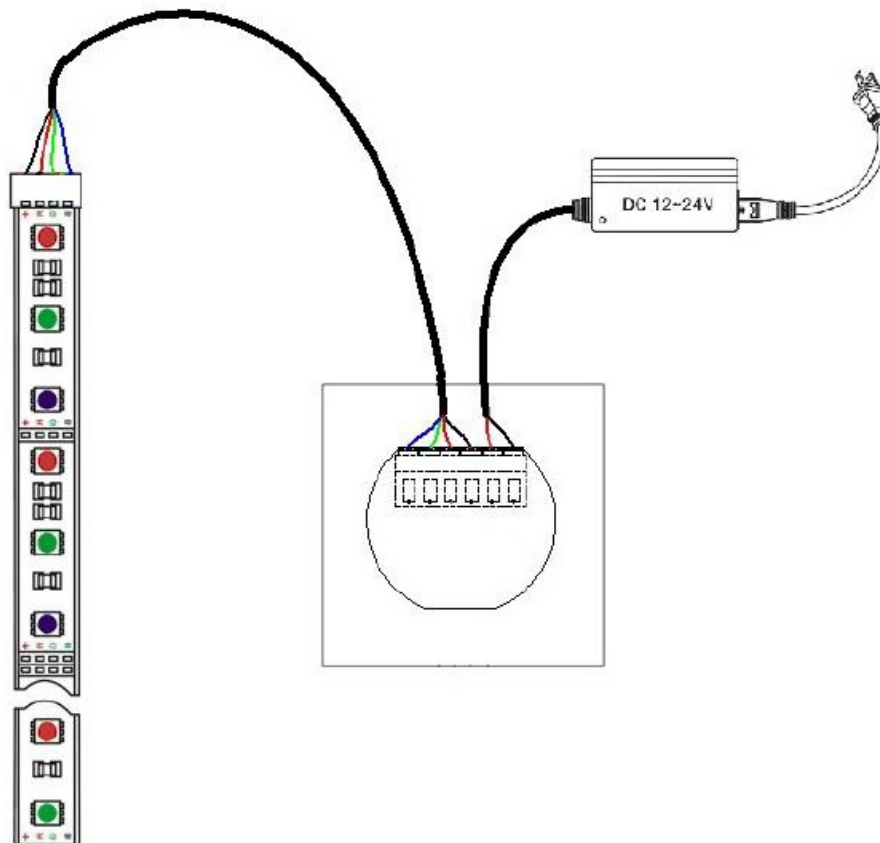
## External Dimensions



## Interface Specifications



1" and „2“ : Input Voltage 12 – 24 V DC; „1“ is negative pole, „2“ is positive pole „3“, „4“, „5“ and „6“: Output voltage 12 – 24 V DC, max. 4 A per channel, „3“ is positive pole, „4“ is connector for red, „5“ is connector for green and „6“ is connector for blue

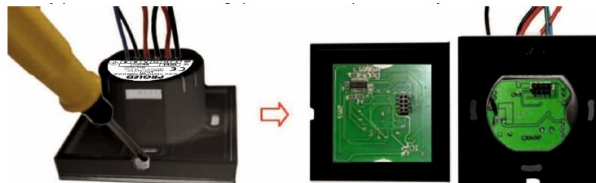


## Installation manual

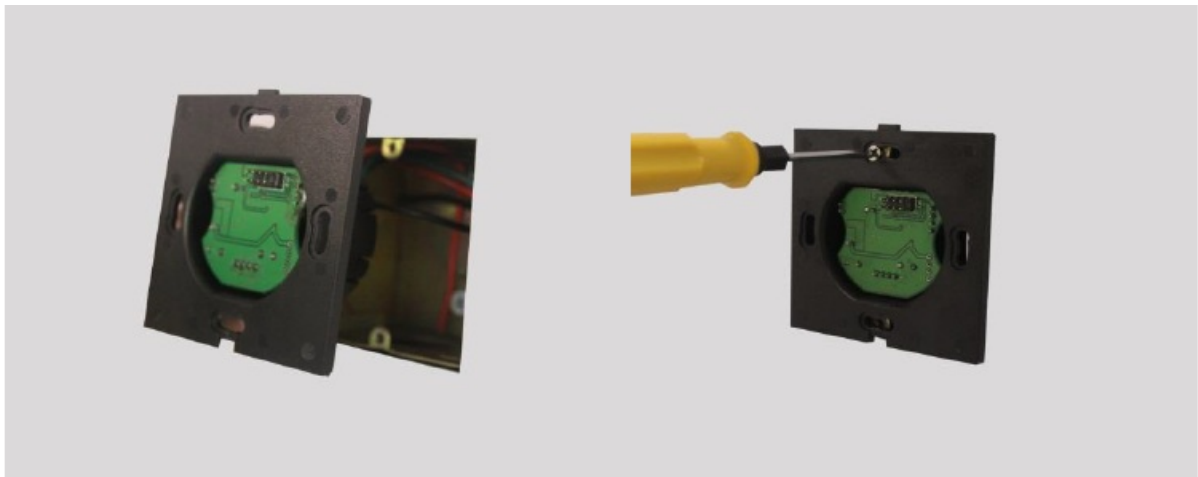
- Connect power supply 12-24 V DC and luminaire.



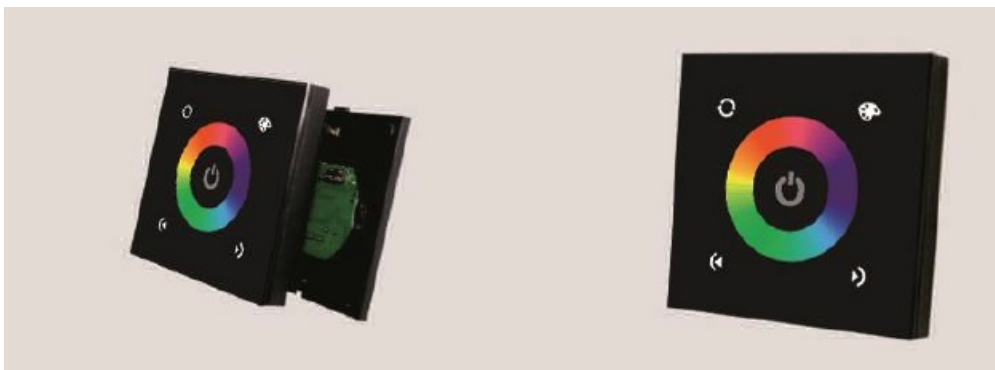
- Gently pull screw driver into gap and remove panel slowly



- Place connected controller into electrical box and fix it.



- Gently fix front plate on controller.



## Usage manual



- In static mode the brightness can be quickly adjusted between 0 – 255, 64 touch points. In dynamic mode you can change by pressing into static mode.



- The dimmer can be switch off and on in any state, by a short press. When dimmer is on, a longer touch, last for 3 seconds, turn on and off the confirmation beep.



- 20 different static Scenes, switching cyclically.



- 19 different dynamic Scenes, switching cyclically.



- In static mode the brightness can be decreased in 25 steps.
- In dynamic mode the speed can be decreased in 10 steps.



- In static mode the brightness can be increased in 25 steps.
- In dynamic mode the speed can be increased in 10 steps.

**Dynamic scenes according to following table:**

No.	Scene	No.	Scene	No.	Scene
1	Red bursty flashing	8	Three colour jumping	15	Purple gradual fade in and out
2	Green bursty flashing	9	Six colour jumping	16	White gradual fade in and out
3	Blue bursty flashing	10	Red gradual fade in and out	17	Three colour gradual fade in and out
4	Yellow bursty flashing	11	Yellow gradual fade in and out	18	Seven colour gradual fade in and out
5	White bursty flashing	12	Green gradual fade in and out	19	Seven colour gradual changing
6	Three colour bursty flashing	13	Cyan-blue gradual fade in and out		
7	Three colour flashing	14	Blue gradual fade in and out		

#### Static scenes according to following table

No.	Scene	No.	Scene	No.	Scene
1	Red	8	Cyan	15	Brown
2	Orange	9	Light blue	16	White
3	Deep yellow	10	Sky blue	17	Ivory
4	Yellow	11	Blue	18	Pink white
5	Light yellow	12	Deep blue	19	Yellow white
6	Green	13	Blue purple	20	Blue white
7	Light green	14	Purple		

#### Frequently Asked Questions

- Q: How do I reset the dimmer to factory settings?**

A: To reset the dimmer, press and hold the reset button for 10 seconds until the indicator light flashes.

- Q: Can I use this dimmer with both 12V and 24V LED lighting systems?**


A: Yes, this dimmer is compatible with both 12V and 24V LED lighting systems.

## Documents / Resources



[PROLED L51313 Glass Touch PWM Dimmer RGB 3 Channel](#) [pdf] User Manual  
L51313, L51313 Glass Touch PWM Dimmer RGB 3 Channel, L51313, Glass Touch PWM Dimmer RGB 3 Channel, Touch PWM Dimmer RGB 3 Channel, Dimmer RGB 3 Channel, RGB 3 Channel

## References

-  [PROLED: proled.com](https://proled.com)
- [User Manual](#)

### Manuals+, [Privacy Policy](#)

This website is an independent publication and is neither affiliated with nor endorsed by any of the trademark owners. The "Bluetooth®" word mark and logos are registered trademarks owned by Bluetooth SIG, Inc. The "Wi-Fi®" word mark and logos are registered trademarks owned by the Wi-Fi Alliance. Any use of these marks on this website does not imply any affiliation with or endorsement.