




**PME 100-500
Height Limiter
System**



PROLEC PME 100-500 Height Limiter System User Guide

[Home](#) » [PROLEC](#) » PROLEC PME 100-500 Height Limiter System User Guide 

Contents

- [1 PROLEC PME 100-500 Height Limiter System](#)
- [2 Product Usage Instructions](#)
- [3 Frequently Asked Questions](#)
- [4 Limits menu how to set limits](#)
- [5 Height limits menu](#)
- [6 Max/min radius menu](#)
- [7 Low limits menu](#)
- [8 Slew limits menu](#)
- [9 Enabled / disabled indicators](#)
- [10 Machine envelope control limits](#)
- [11 PME problem solvers](#)
- [12 Contact](#)
- [13 Documents / Resources](#)
 - [13.1 References](#)
- [14 Related Posts](#)



PROLEC PME 100-500 Height Limiter System



Product Specifications:

- Manufacturer: Prolec
- Model: PME
- Contact: T: +44 (0) 1202 441 000 | E: sales@prolec.co.uk
- W: www.prolec.co.uk

Product Usage Instructions

Setting Height Limits:

1. Select "Height limits" from the Limits menu.
2. To set a height from a known value:
 1. Select "Enter a height from a known value."
 2. Enter the known value using the arrow keys and confirm.
3. To set a height limit using the current highest point:
 1. Raise the equipment to the height limit.
 2. Select "Set limit using highest part of the equipment" and confirm.

Setting Max/Min Radius Limits:

1. Select "Max radius" or "Min radius" from the Limits menu.
2. To set a radius from a known value:
 1. Enter the known value using the arrow keys and confirm.
3. To set a radius limit using the current furthest/nearest point:
 1. For max radius, extend equipment out to the required radius limit and confirm.
 2. For min radius, move equipment into the required radius limit and confirm.

Setting Low Limits:

1. Select "Low limits" from the Limits menu.
2. To set a low limit from a known value:
 1. Select "Enter low limit from a known value."
 2. Enter the known value using the arrow keys and confirm.
3. To set a low limit using the current lowest point:
 1. Lower the equipment to the low limit.
 2. Select "Set limit using current lowest part of the equipment" and confirm.

Frequently Asked Questions

- **Q: How do I access the top menu?**
 - A: Press any button to access the top menu after confirming with Start.
- **Q: How can I ensure safety features are enabled?**
 - A: Make sure that the correct safety features are enabled for the job and work site.

Limits menu how to set limits

1. Press Start to confirm that the correct safety features are enabled for the job and work site.
2. Press any button to access the top menu.



Fig. 1



Fig. 2

3. From the top menu (Fig. 3), select the limits menu by pressing the top left-hand button.



Fig. 3

4. Select the limit type you want to set from the menu displayed below. (Fig. 4).

(Fig. 4).



Fig. 4

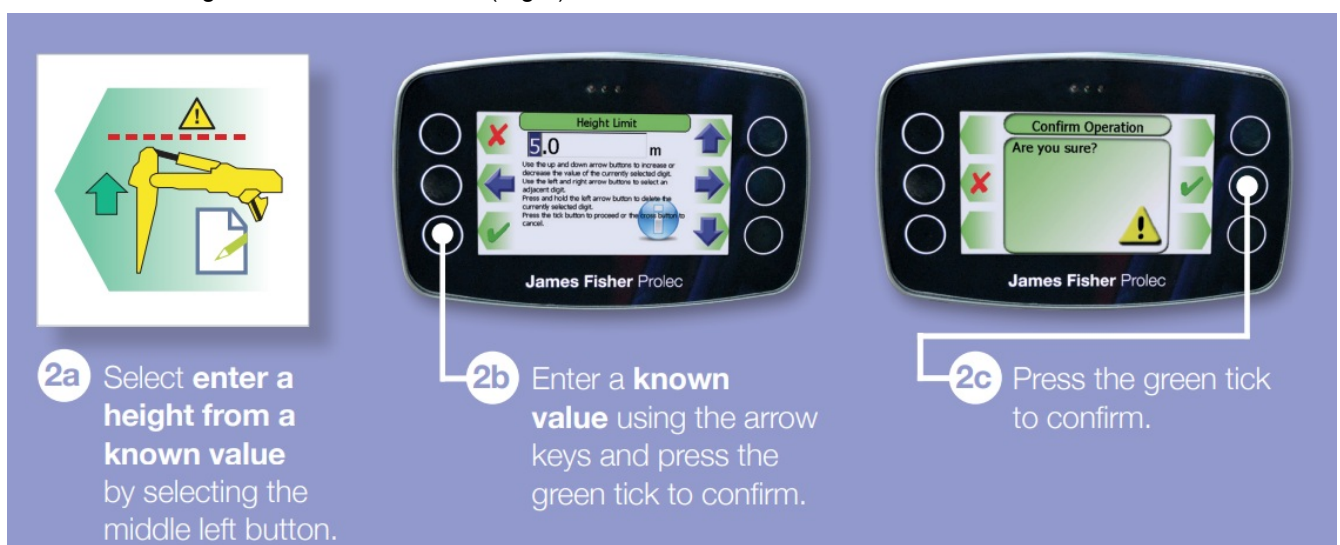
Height limits menu

1. From the limits menu (Fig. 4), select height limits (top left button).

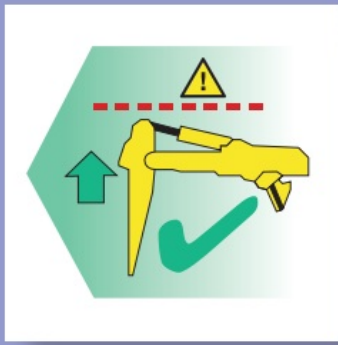


Fig. 5

2. How to set a height from a known value (Fig.5).



3. How to set a height limit using current highest point (Fig. 5).



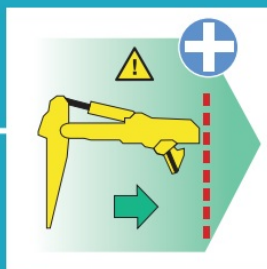
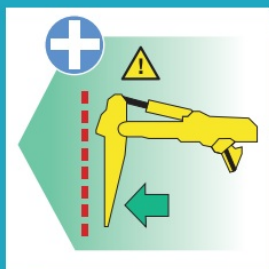
- 3a** Raise equipment to height limit and select **set limit using highest part of equipment** (bottom left button).



- 3b** Press the green tick to confirm.

Max/min radius menu

- From the limits menu (Fig. 4), select max radius (middle left button) or min radius (middle right button).



From the **limits menu** (Fig. 4), select **max radius** (middle left button) or **min radius** (middle right button).

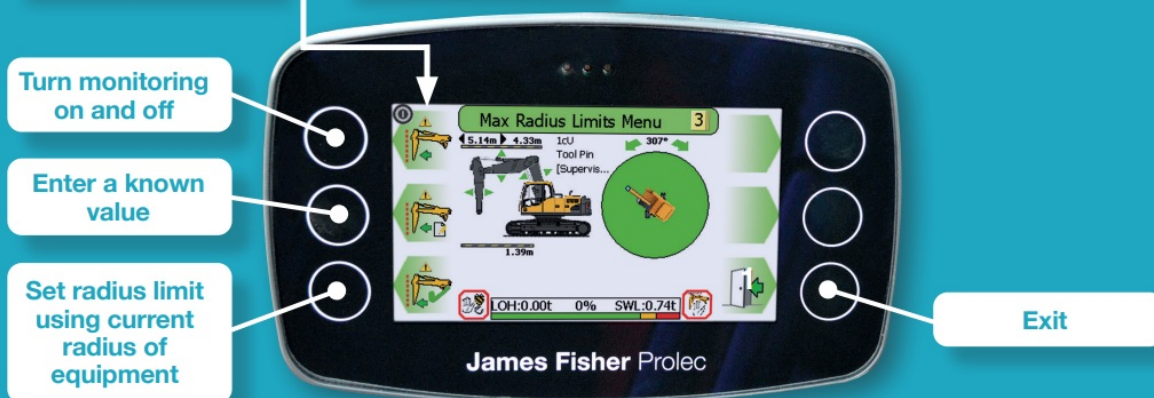
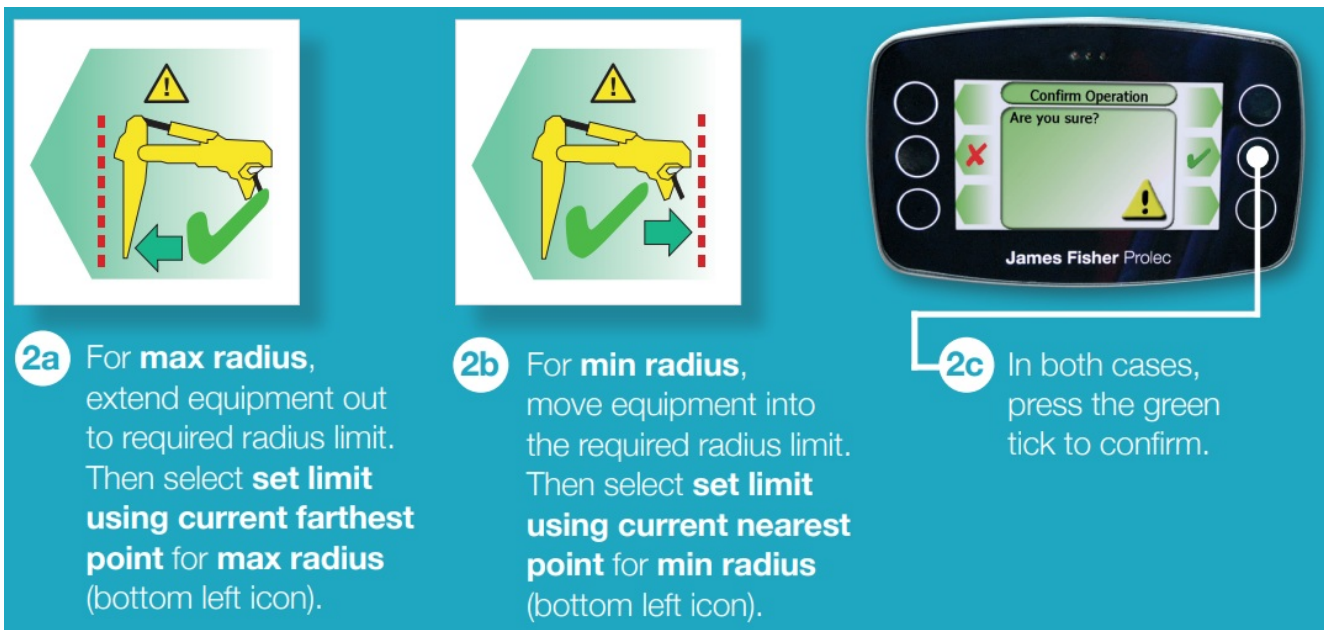


Fig. 6

- How to set a radius from a known value (Fig. 6).



2. How to set a radius limit using current furthest / nearest point



Low limits menu



1. How to set a low limit using a known value (Fig. 7).



1a Select **enter low limit from a known value**.



1b Enter a **known value** using the arrow keys and press the green tick to confirm.



1c Press the green tick to confirm.

2. How to set a low limit using current lowest point.



2a Lower the equipment to **low limit and select set limit using current lowest part of equipment** (bottom left button).



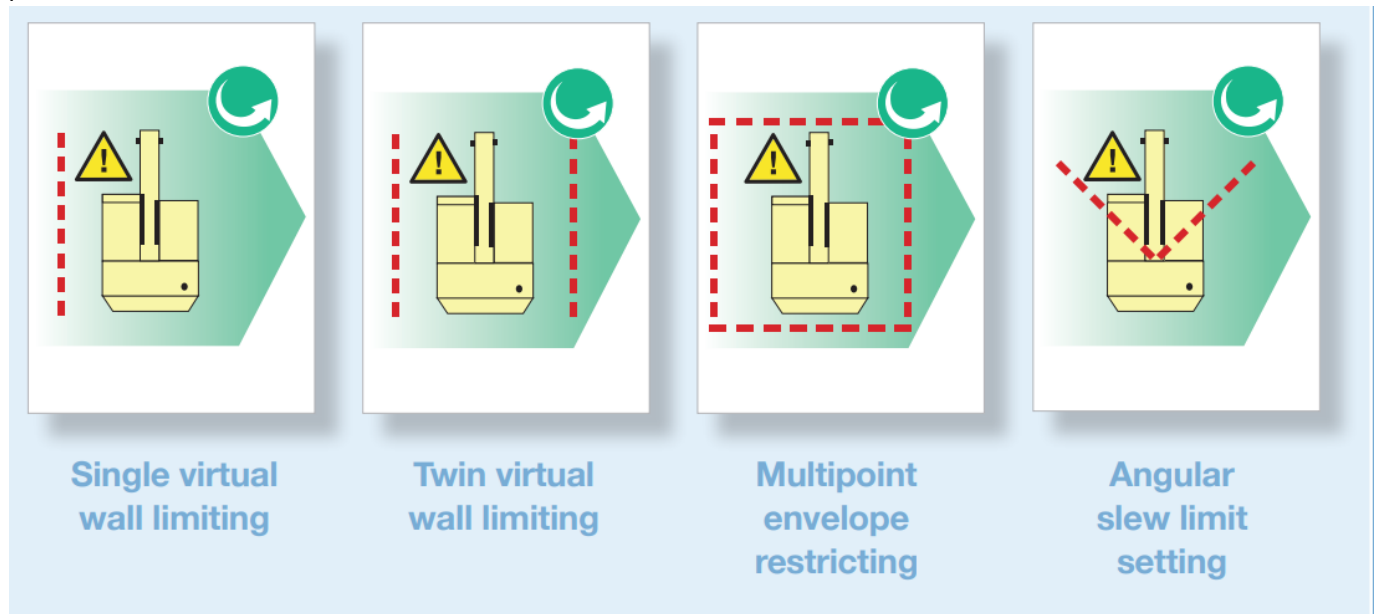
2b Press the green tick to confirm.

Slew limits menu

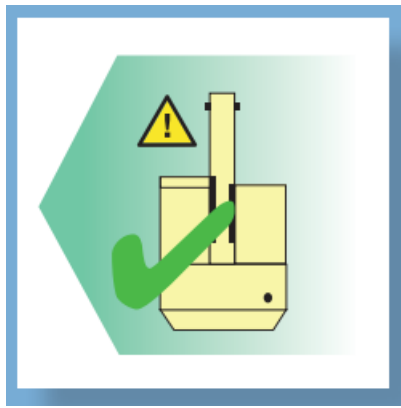


Slew types

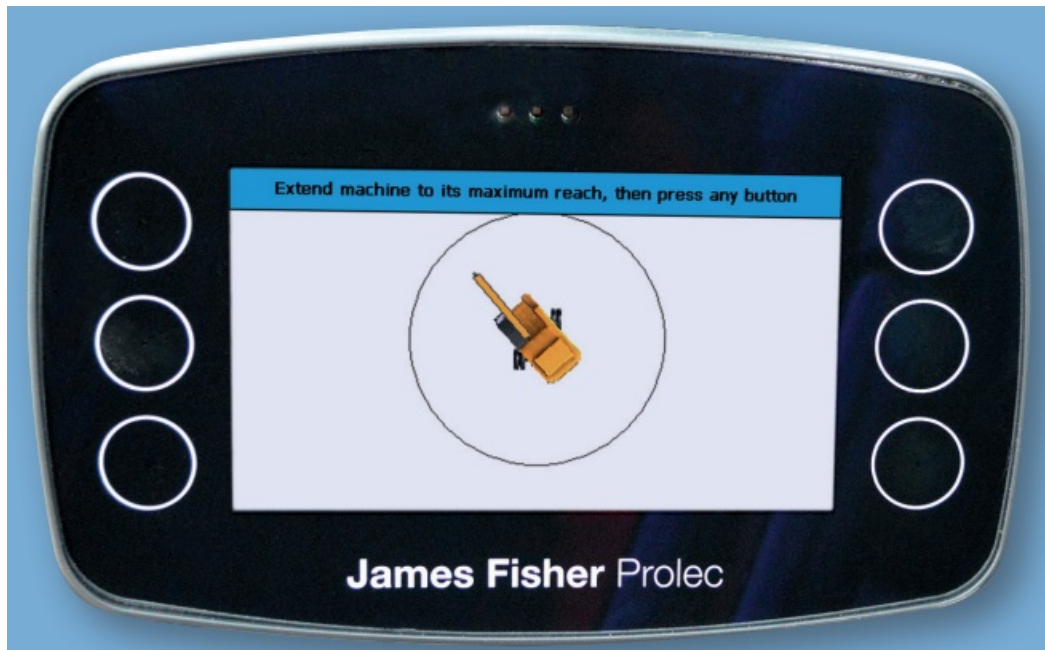
In the slew menu, the top left hand button turns monitoring on and off. Pressing the top right hand button cycles through slew types (see below). Once a slew type is selected, press the bottom left hand button to start the setup procedure and follow the on screen instructions.



1. How to set the slew limit using equipment's reach (Fig. 8).
 - 1a With a slew type selected, press start the setup procedure (bottom lefthand button).
 -



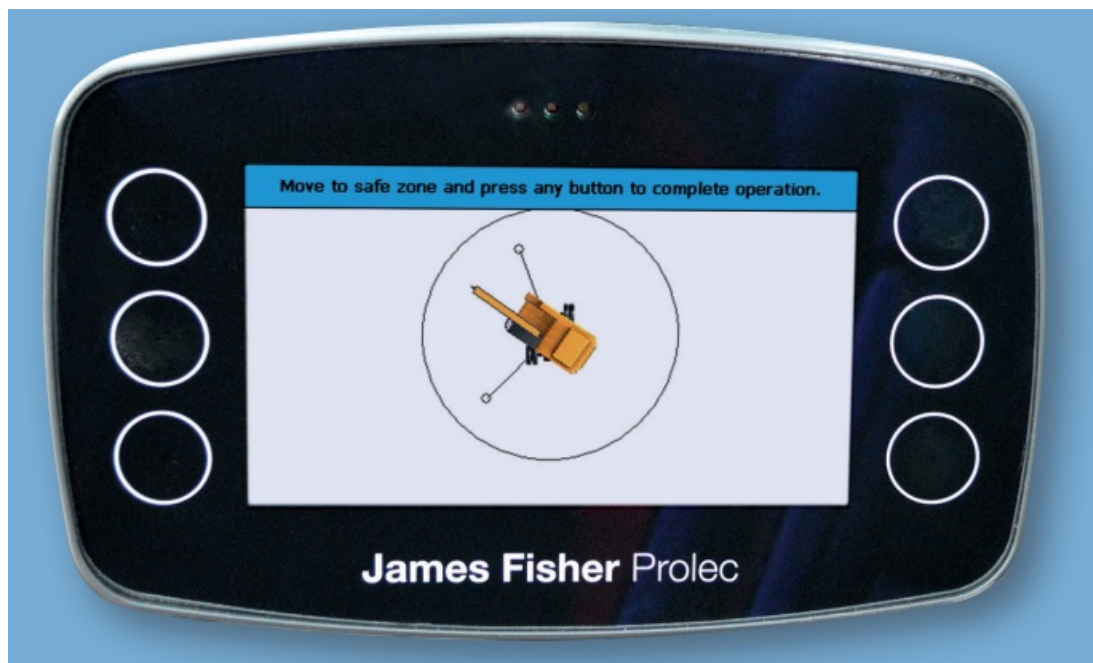
- 1b Extend the machine to its maximum reach and press any button.



- 1c Follow the instructions on the screen, moving to each required limit.



- 1d Once the machine reaches the limit, press any button to move to the next instruction.
- 1e With all limits set, move to a safe zone and press any button to complete the setup.



Enabled / disabled indicators

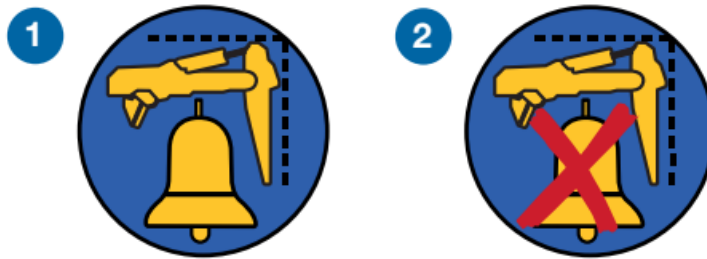
1. Rated capacity indicator (RCI).
2. No motion control on overload



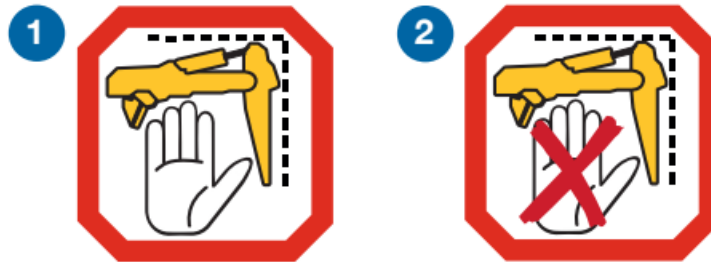
1. Rated capacity control (RCC).
2. Motion control on overload.






1. Machine envelope indication (MEI).
2. No motion control on limit.




1. Machine envelope control (MEC).
2. Motion control on limit.



Warnings

-  Green: Operation within the safe working load.
-  Amber: Approaching overload limit (only indicated when lifting mode is active).
-  Red: Rated capacity indication (RCI). No motion control on overload



-  Red: Stability control overload or hydraulic limitation control



- Soft override – an action to temporarily disable motion control.
- Master override keyswitch – an action to disable motion control whilst key is active.



RCI / RCC limits

1. ON: when operating with an active RCI / RCC limit, the indicator will NOT have a cross on it.
2. OFF: when operating with an inactive RCI / RCC limit, the indicator will have a cross on it.



Machine envelope control limits

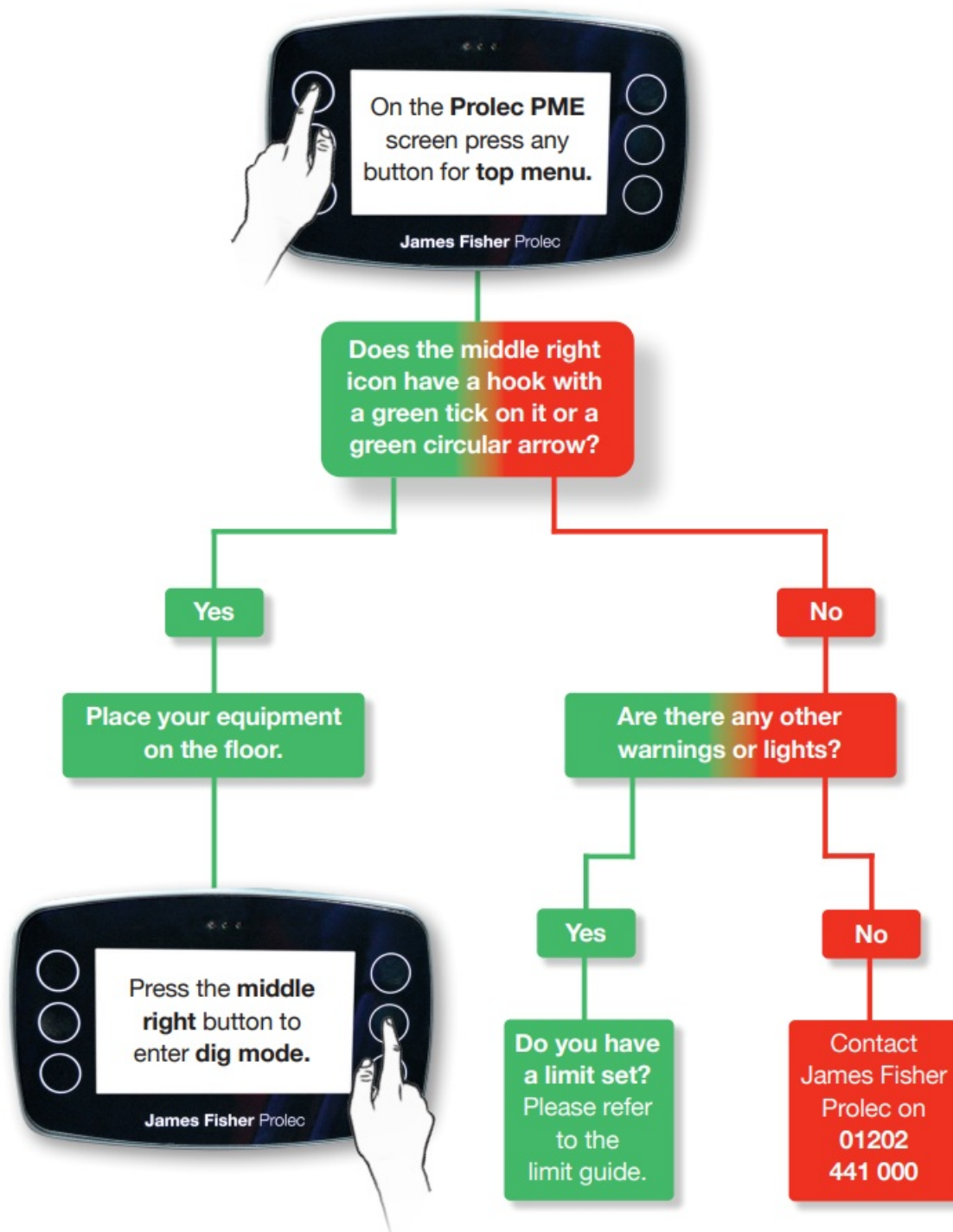
- ON: when operating with an active machine envelope control limit, the indicator will NOT have a cross on it.
- OFF: when operating without machine envelope control limits, the indicator will have a cross on it



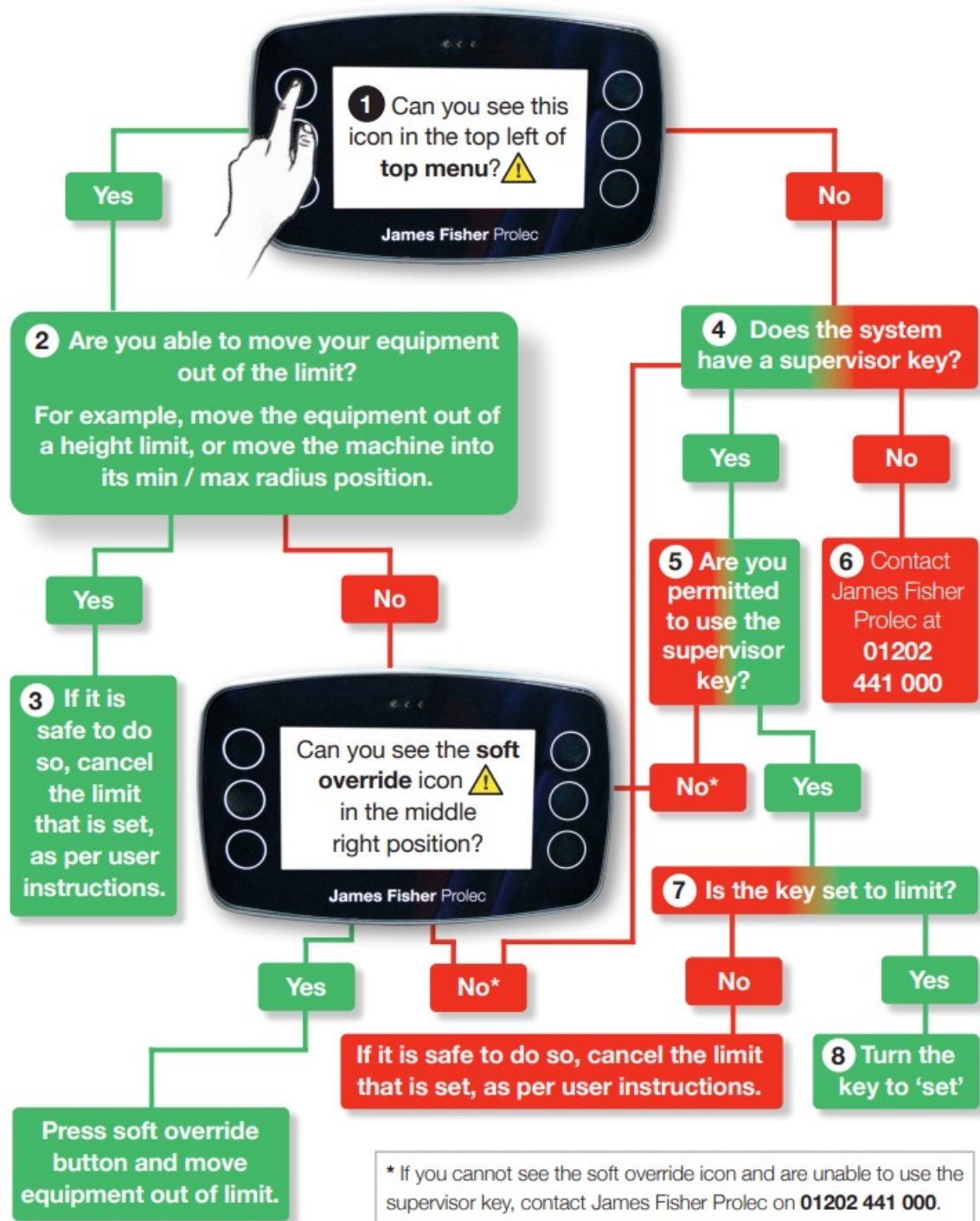
PME problem solvers

Dig mode (non-lifting mode):

Is your alarm going off while you're not lifting?



Stuck in a limit: Does the system error say you've reached a limit, for example max height?



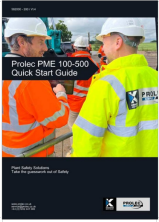
If you cannot see the soft override icon and are unable to use the supervisor key, contact James Fisher Prolec on 01202 441 000

Plant Safety Solutions Take the guesswork out of safety

Contact

- www.prolec.co.uk
- service@prolec.co.uk
- +44 (0)1202 441 000

Documents / Resources



[PROLEC PME 100-500 Height Limiter System](#) [pdf] User Guide

PME 100-500 Height Limiter System, PME 100-500, Height Limiter System, Limiter System, System

References

- [Prolec ▶ Transforming Construction Safety & Efficiency](#)
- [User Manual](#)

[Manuals+](#), [Privacy Policy](#)

This website is an independent publication and is neither affiliated with nor endorsed by any of the trademark owners. The "Bluetooth®" word mark and logos are registered trademarks owned by Bluetooth SIG, Inc. The "Wi-Fi®" word mark and logos are registered trademarks owned by the Wi-Fi Alliance. Any use of these marks on this website does not imply any affiliation with or endorsement.