



PROJECTA PM300 Intelli-RV Power Management System Installation Guide

[Home](#) » [Projecta](#) » PROJECTA PM300 Intelli-RV Power Management System Installation Guide 

Contents

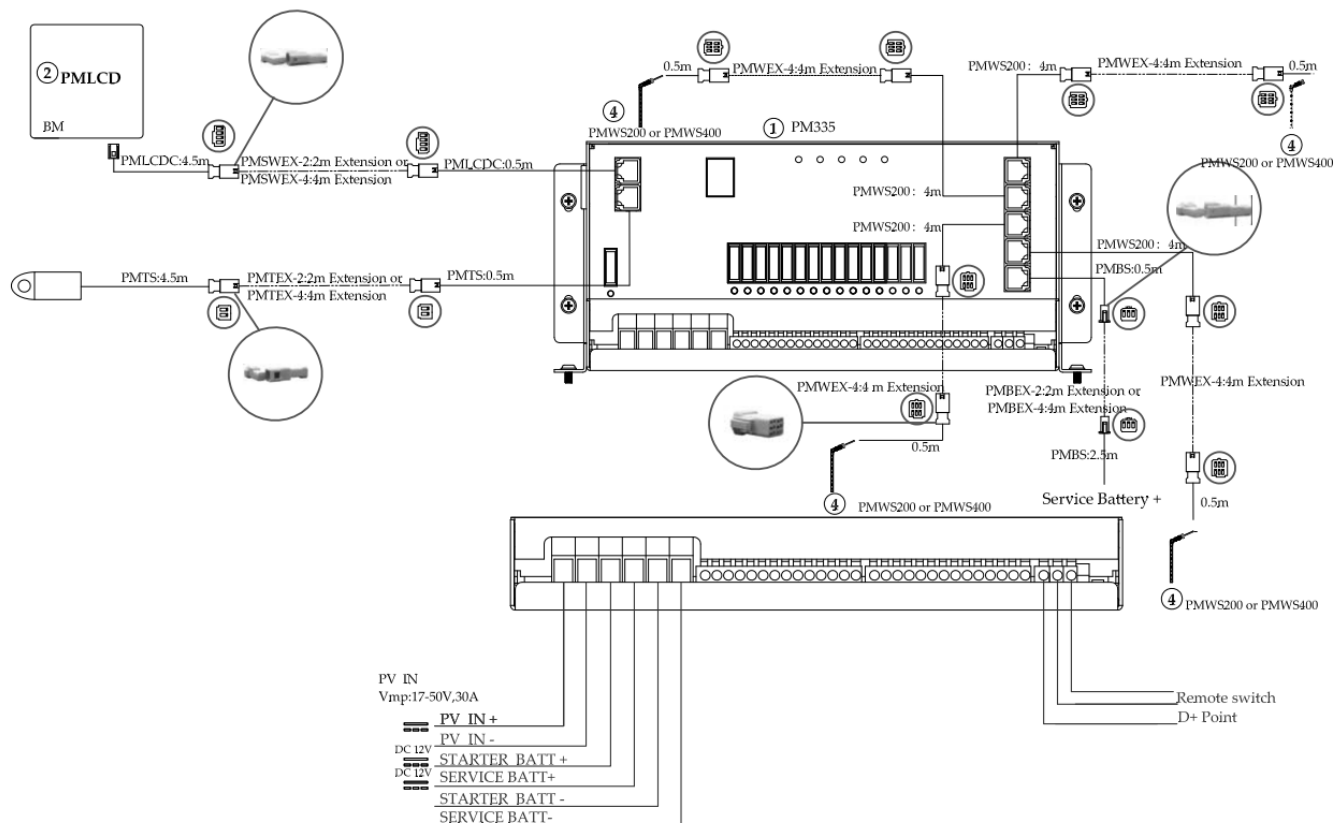
- [1 PROJECTA PM300 Intelli-RV Power Management System](#)
- [2 WIRING DIAGRAM](#)
- [3 INSTALLATION INSTRUCTION](#)
- [4 INTELLI-RV 12V POWER MANAGEMENT SYSTEM](#)
- [5 Model](#)
- [6 Parts](#)
- [7 Water Tank Level Sensor](#)
- [8 Warranty Statement](#)
- [9 Usage Instructions](#)
- [10 PRECAUTION](#)
- [11 WARRANTY STATEMENT](#)
- [12 Documents / Resources](#)
- [13 Related Posts](#)



PROJECTA PM300 Intelli-RV Power Management System

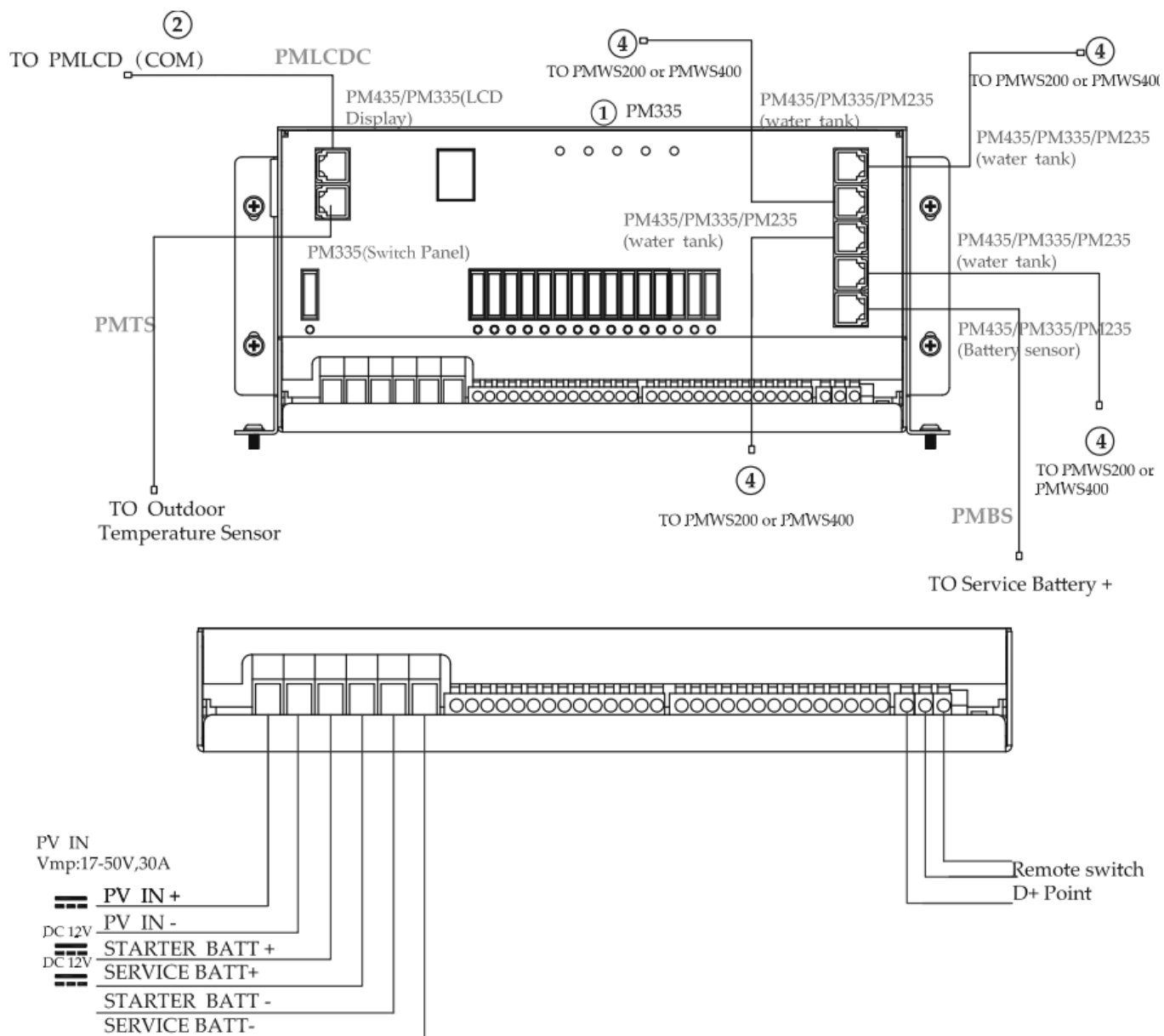


WIRING DIAGRAM



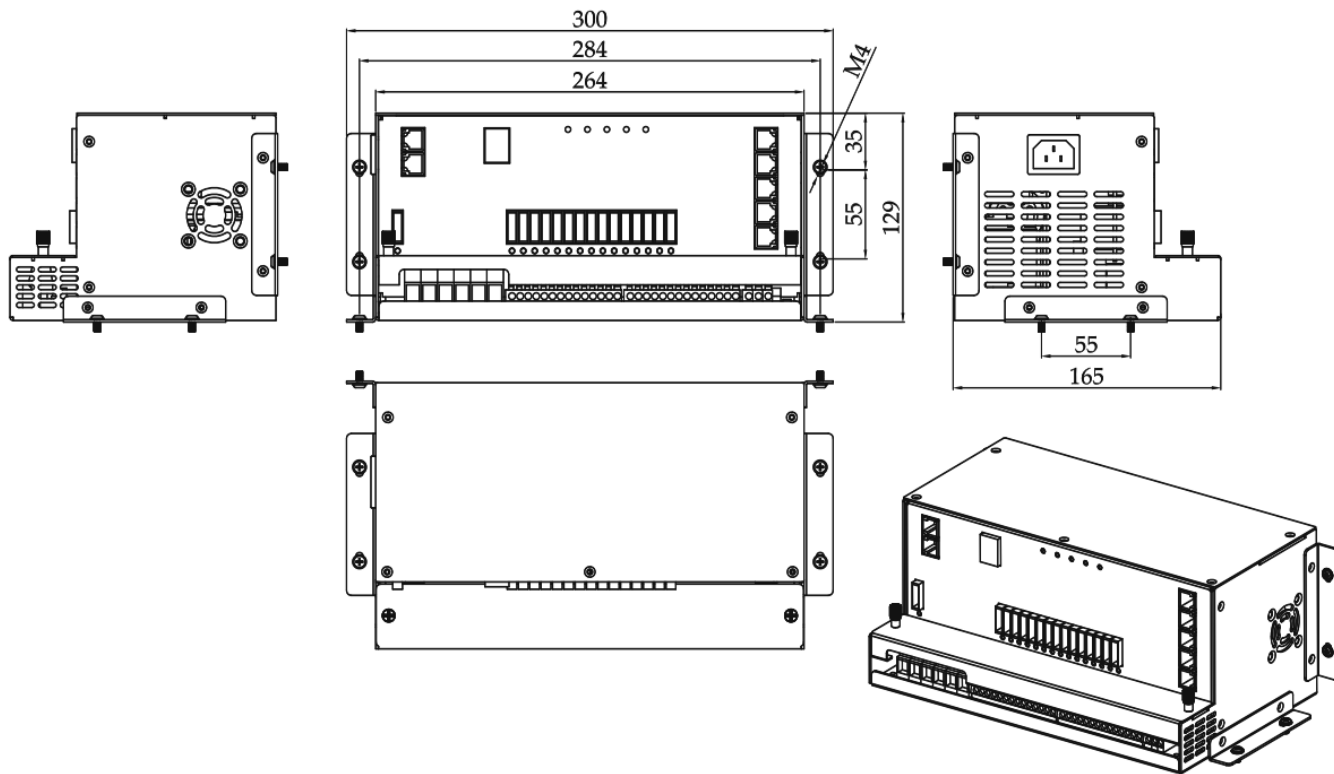
Code	Name	Model	Qty	Part No. on drawing
1	12V 30A Charger and 35Amp Power supply, 30A MPPT Solar controller	PM335	1	1
2	LCD Display T/S PM335	PMLCD	1	2
3	200mm water sensor with 4.5m cable	PMWS200 (not supplied)	0	4
4	400mm water sensor with 4.5m cable	PMWS400 (not supplied)	0	4

Code	Description	Qty	Length
PMLCDC	5m Cable to suit PMLCD	1	5m
PMBS	Battery sensor with 3m cable	1	3m
PMTS	Temperature sensor with 5m cable	1	5m
PMWS200	4.5m Cable to suit PMWS200 (not supplied)	0	4.5m
PMAC	AC power cord, 1.5m, AUS	1	1.5m

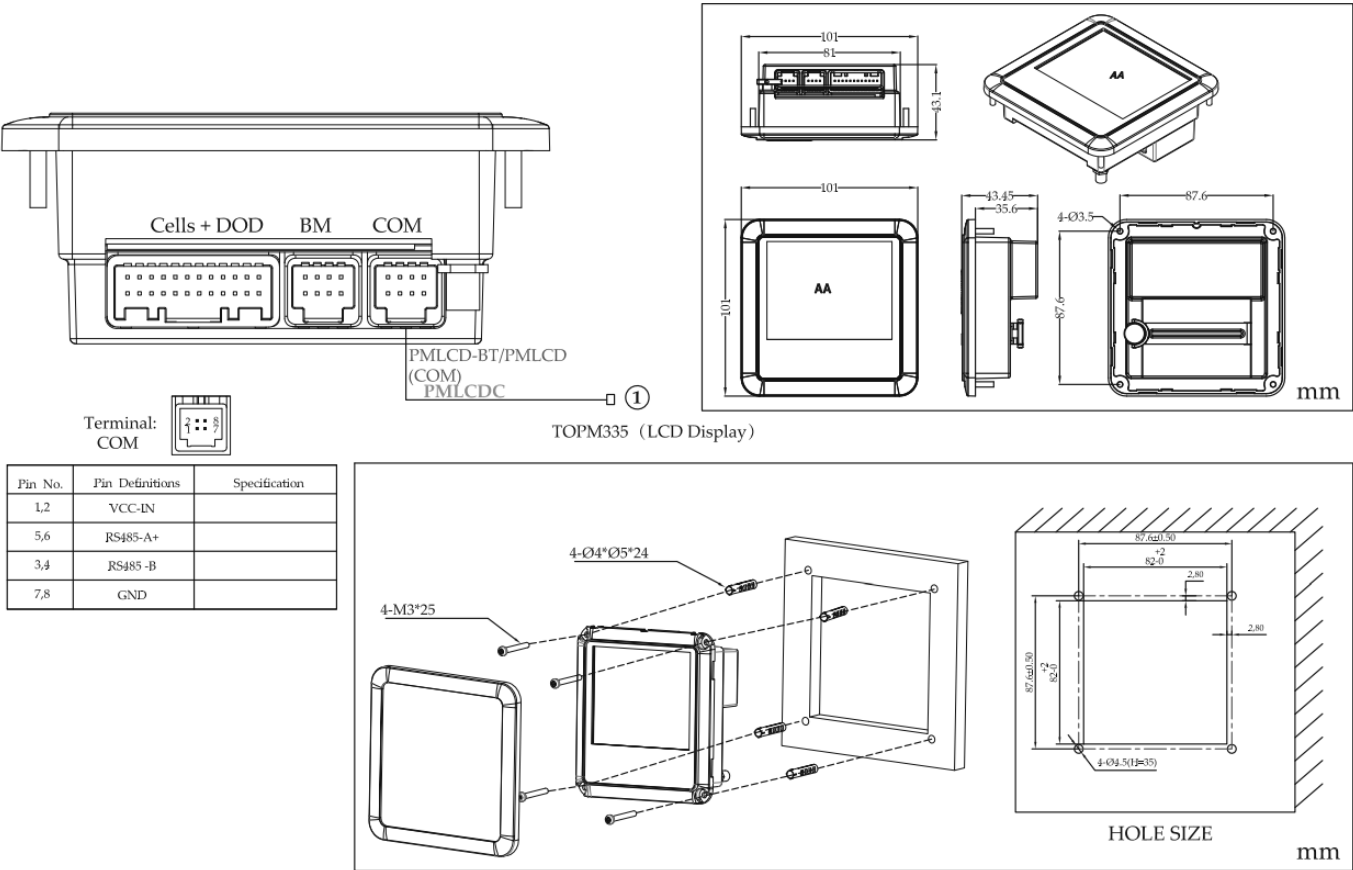


Pin No	Pin Definitions	Specification
	PV+	Connect to PY +
	py.	Connect to PV –
	Starter BAT +	Connect to star ter ba tter y +
	Service BAT +	Conn ect to serv ice battery+
	StarterBA T	Connect to starter battery
	Scrvicc BAT-	Conn<.-ct to service battery –
	U +	Connect to Step + (15A)
	L 2+	Connect to lo a d of class C + (15A)
	L3 +	Connect to load of class C + (10A)
10	L 4+	Connect to load of class B+ (15A)

11	LS+	Connect to load of ckiss B + (10A)
12	L6+	Connect to load of class B + (10A)
13	L7+	Connect to load of class B + (15A)
M	l.8 +	Connect to load of class B+ (10A)
15	L9+	Connect to load of class B+ (10A)
16	LIO+	Connect to load of cl.iss B + (10A)
17	LII+	Connect to Pump + (10A)
IB	LI2+	Connec t to load of class B+ (10A)
	LI3+	Connect to load of class B+ (10A)
m	LI4+	Connect to load of class B+ (10A)
E	LJ.	Connect to Sttlp –
n	L2·	Connect to load of class C –
	L3-	Connect to load of class C –
M ..	L4·	Connect to lo ad of class B –
	L5.	Connec t to load of class B –
	L6-	Conne ct to load of class B –
V .	L7·	Connect to lo.id of class B –
	l.8-	Connect to lo.id of class B –
B	L9·	Con nect to load of class B –
w	LIO	Connec t to lo.id of class B –
n	LI I	Con nect to Pump –
m	L1 2-	Connect to load of class B –
E	LI3-	Connect to load of cl.iss B –
	LI4-	Connect to load of class B –

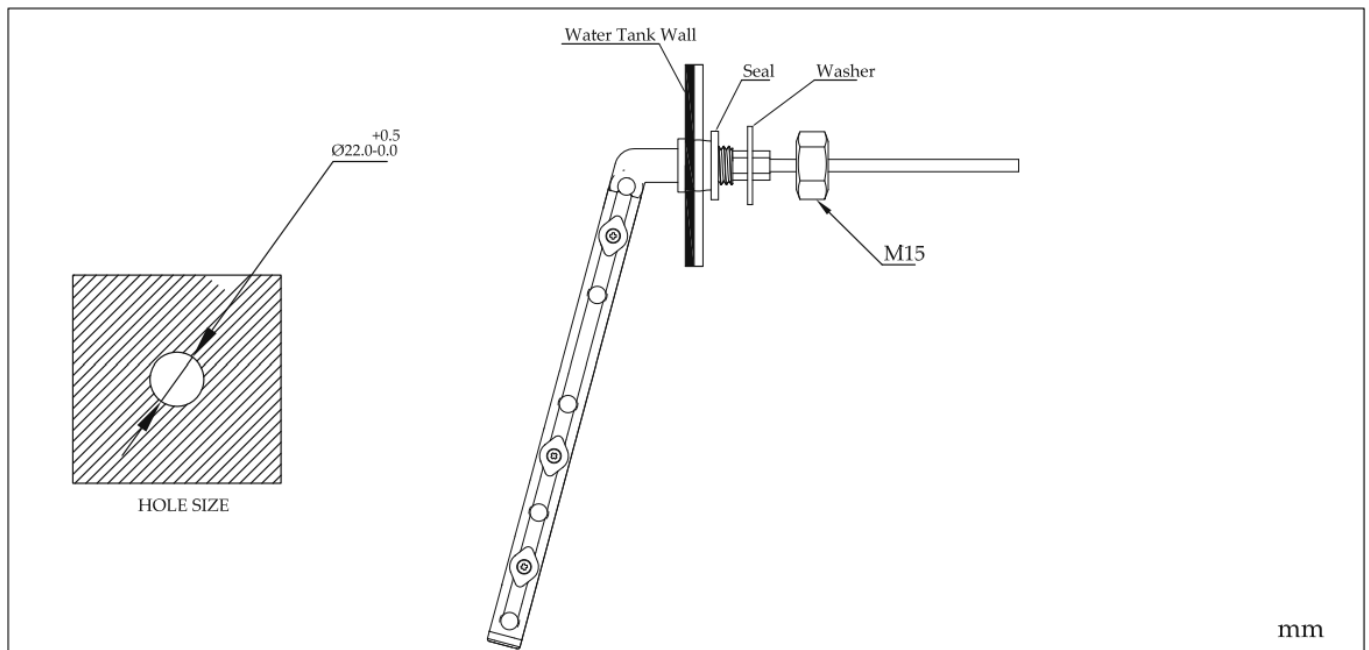


PMLCD

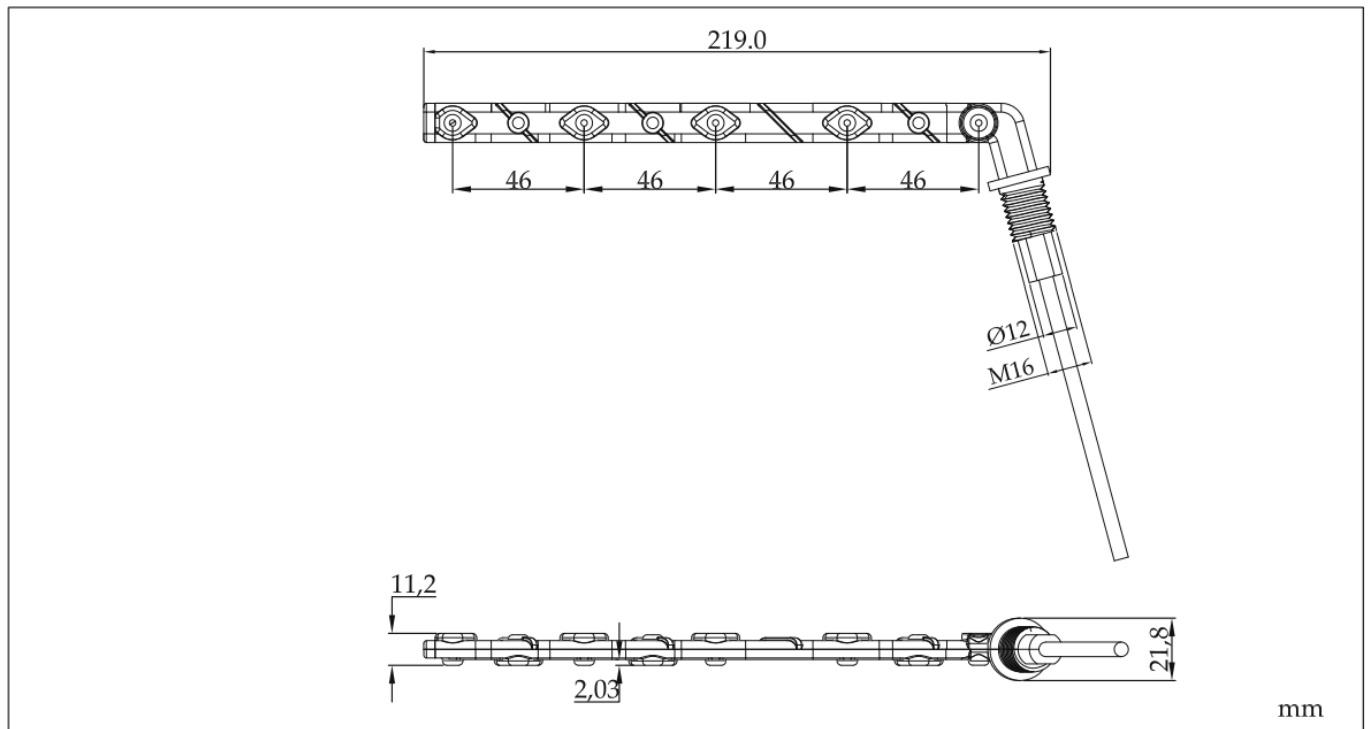


INSTALLATION INSTRUCTION

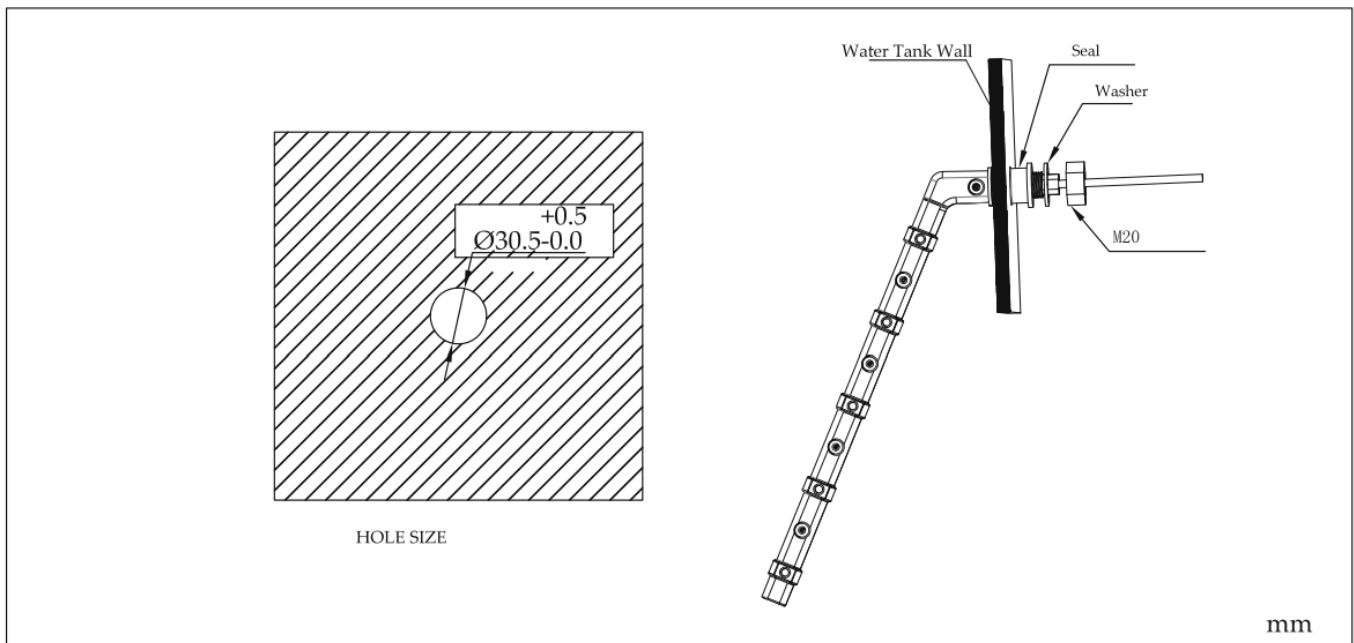
Water tank level sensor
(Not supplied)



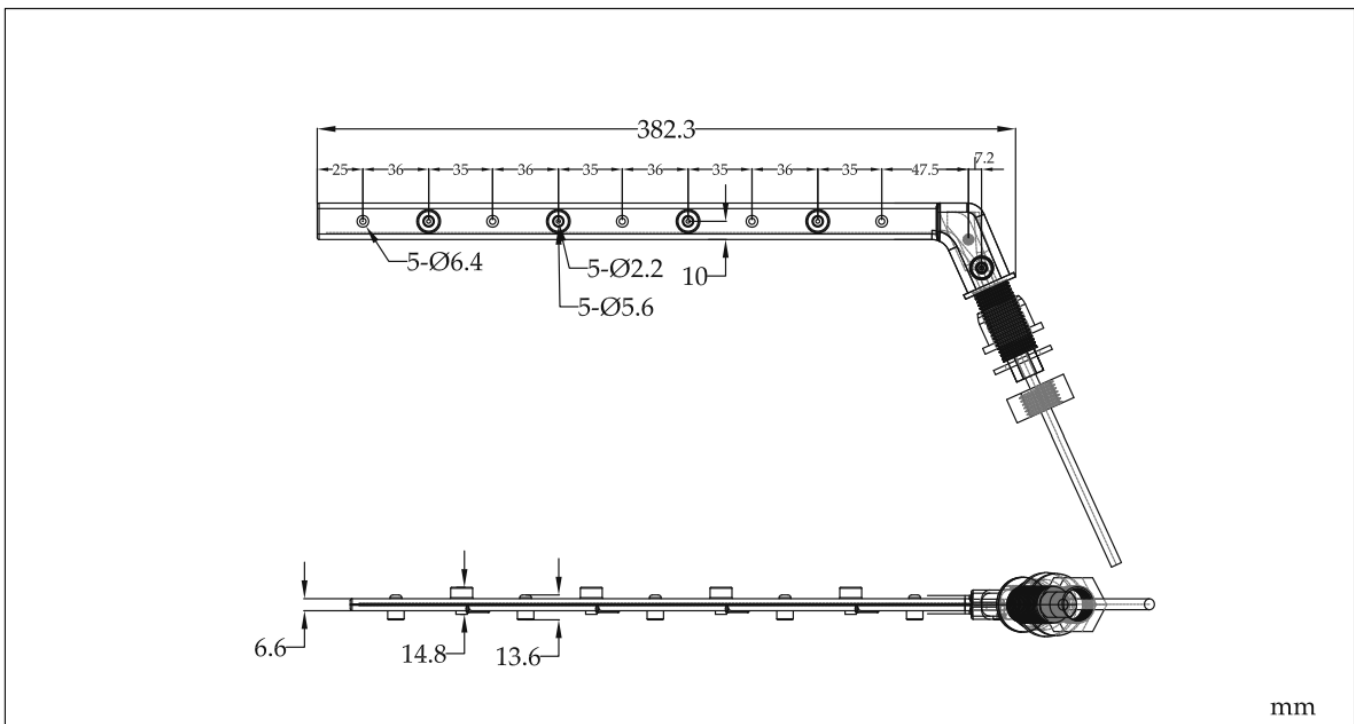
PMWS200



Water tank level sensor
(Not supplied)



PMWS400



INTELLI-RV 12V POWER MANAGEMENT SYSTEM

The INTELLI-RV 12V Power Management System is a comprehensive power system for use in recreational vehicles. It includes a 12V 30A charger and 35Amp power supply, as well as a 30A MPPT Solar controller. The system also includes an LCD Display (PM335) for monitoring and control.

Warnings

1. Read all instructions before use.
2. Only use the system as described in the user manual.

Installation Guide

The PM300 should be installed by a qualified technician. Follow the instructions in the user manual carefully.

Model

The PM300 model includes the following components:

- 12V 30A Charger and 35Amp Power supply
- 30A MPPT Solar controller
- LCD DisplayT/S PM335
- 200mm water sensor with 4.5m cable (PMWS200 – not supplied)
- 400mm water sensor with 4.5m cable (PMWS400 – not supplied)

Parts

The following parts are included:

Code	Name	Model	Qty	Length
PMLCDC	5m Cable to suit PMLCD		1	5m
PMBS	Battery sensor with 3m cable		1	3m
PMTS	Temperature sensor with 5m cable		1	5m
PMSW200	4.5m Cable to suit PMWS200	(not supplied)	0	4.5m
PMAC	AC power cord, 1.5m, AUS		1	1.5m

Water Tank Level Sensor

The system supports up to four water tank level sensors. These sensors (PMWS200 and PMWS400) are not supplied with the system and must be purchased separately.

Warranty Statement

The product comes with a warranty that can be claimed by delivering the product to the original place of purchase, along with the original invoice and a written explanation of the claim. Minor failures may be repaired or replaced at the discretion of BWI, while major failures are eligible for replacement, refund, and compensation for any other reasonably foreseeable loss or damage.

Usage Instructions

1. Ensure all components are properly installed as per the user manual.
2. Connect the AC power cord to a suitable power source.
3. The LCD display will show important information such as battery voltage, charging status, and solar input.
4. The system supports up to four water tank level sensors (PMWS200 and PMWS400 – not supplied). These sensors can be connected to the system to monitor water levels in the RV.
5. Use the system controls to monitor and manage power usage in the RV.

PRECAUTION

- Explosive gases. Prevent flames and sparks. Provide adequate ventilation during charging
- Before charging, read the instructions
- For indoor use. Do not expose to rain
- For charging lead acid and LiFePO₄ batteries ONLY (of the size & voltage specified in the specifications table)
- Always charge the battery on the correct voltage setting. Never set the charger to a higher voltage than the battery
- Disconnect the 240V mains supply before making or breaking the connections to the battery
- The battery charger must be plugged into an earthed socket outlet
- Connection to supply mains is to be in accordance with National wiring rules
- Do not attempt to charge non-rechargeable batteries
- Never charge a frozen battery
- If the AC cord is damaged, do not attempt to use. It must be replaced or repaired by a qualified person
- Corrosive substances may escape from the battery during charging and damage delicate surfaces. Store and charge in a suitable area
- This charger is not intended for use by persons (including children) with reduced physical, sensory or mental capabilities, or lack of experience and knowledge, unless they have been given supervision or instruction concerning the use of the appliance by a person responsible for their safety
- Young children should be supervised to ensure that they do not play with the appliance
- If the recreational vehicle is to be put in to storage without power, please turn off the BATTERY MASTER SWITCH. If the recreational vehicle is to be put into long term storage without power, disconnect ALL cabling from the battery

WARRANTY STATEMENT

Applicable only to product sold in Australia

Brown & Watson International Pty Ltd of 1500 Ferntree Gully Road, Knoxfield, Vic., telephone (03) 9730 6000, fax (03) 9730 6050, warrants that all products described in its current catalogue (save and except for all bulbs and lenses whether made of glass or some other substance) will under normal use and service be free of failures in material and workmanship for a period of one (1) year (unless this period has been extended as indicated elsewhere) from the date of the original purchase by the consumer as marked on the invoice. This warranty does not cover ordinary wear and tear, abuse, alteration of products or damage caused by the consumer. To make a warranty claim the consumer must deliver the product at their cost to the original place of purchase or to any other place which may be nominated by either BWI or the retailer from where the product was bought in order that a warranty assessment may be performed. The consumer must also deliver the original invoice evidencing the date and place of purchase together with an explanation in writing as to the nature of the claim.

In the event that the claim is determined to be for a minor failure of the product then BWI reserves the right to repair or replace it at its discretion. In the event that a major failure is determined the consumer will be entitled to a replacement or a refund as well as compensation for any other reasonably foreseeable loss or damage. This warranty is in addition to any other rights or remedies that the consumer may have under State or Federal legislation.

IMPORTANT NOTE

Our goods come with guarantees that cannot be excluded under the Australian Consumer Law. You are entitled to a replacement or refund for a major failure and compensation for any other reasonably foreseeable loss or damage. You are also entitled to have the goods repaired or replaced if the goods fail to be of acceptable quality and the failure does not amount to a major failure.

CONTACT

Distributed by
AUSTRALIA

Brown & Watson International Pty Ltd

- Knoxfield, Victoria 3180
- **Telephone** (03) 9730 6000
- **Facsimile** (03) 9730 6050
- **National Toll Free** 1800 113 443

NEW ZEALAND

- **Address:** Narva New Zealand Ltd 22–24 Olive Road PO Box 12556 Penrose Auckland, New Zealand
- **Telephone** (09) 525 4575
- **Facsimile** (09) 579 1192

Documents / Resources



[PROJECTA PM300 Intelli-RV Power Management System](#) [pdf] Installation Guide
PM300 Intelli-RV Power Management System, PM300, Intelli-RV Power Management System,
Power Management System, Management System

[Manuals+](#)