



PROJECT SOURCE RPV5-PS Handheld Pool Vacuum User Manual

[Home](#) » [PROJECT SOURCE](#) » PROJECT SOURCE RPV5-PS Handheld Pool Vacuum User Manual 

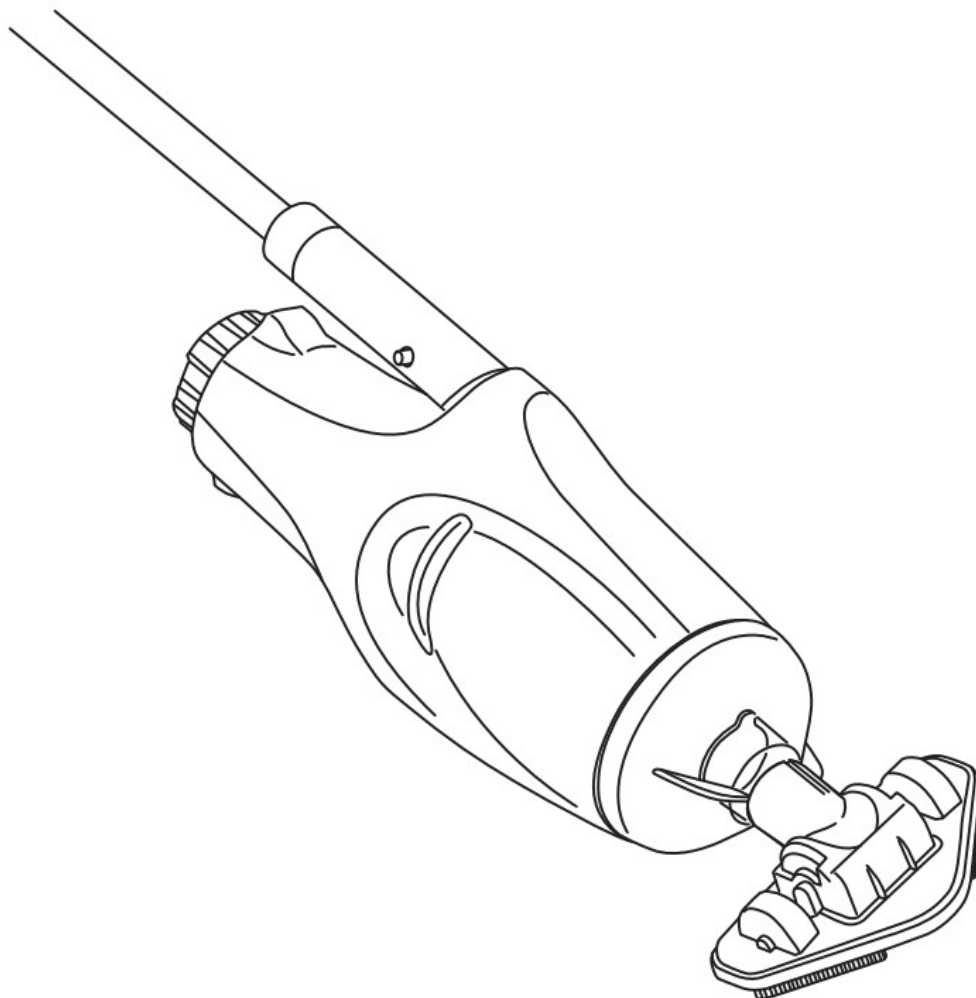


Contents

- [1 RPV5-PS Handheld Pool Vacuum](#)
- [2 PARTS DIAGRAM](#)
- [3 SAFETY INFORMATION](#)
- [4 GETTING STARTED](#)
- [5 ASSEMBLY](#)
- [6 OPERATION](#)
- [7 MAINTENANCE & STORAGE](#)
- [8 TROUBLESHOOTING](#)
- [9 Documents / Resources](#)
 - [9.1 References](#)
- [10 Related Posts](#)

RPV5-PS Handheld Pool Vacuum

PROJECT SOURCE and logo design are trademarks or registered trademarks of LF, LLC. All rights reserved.

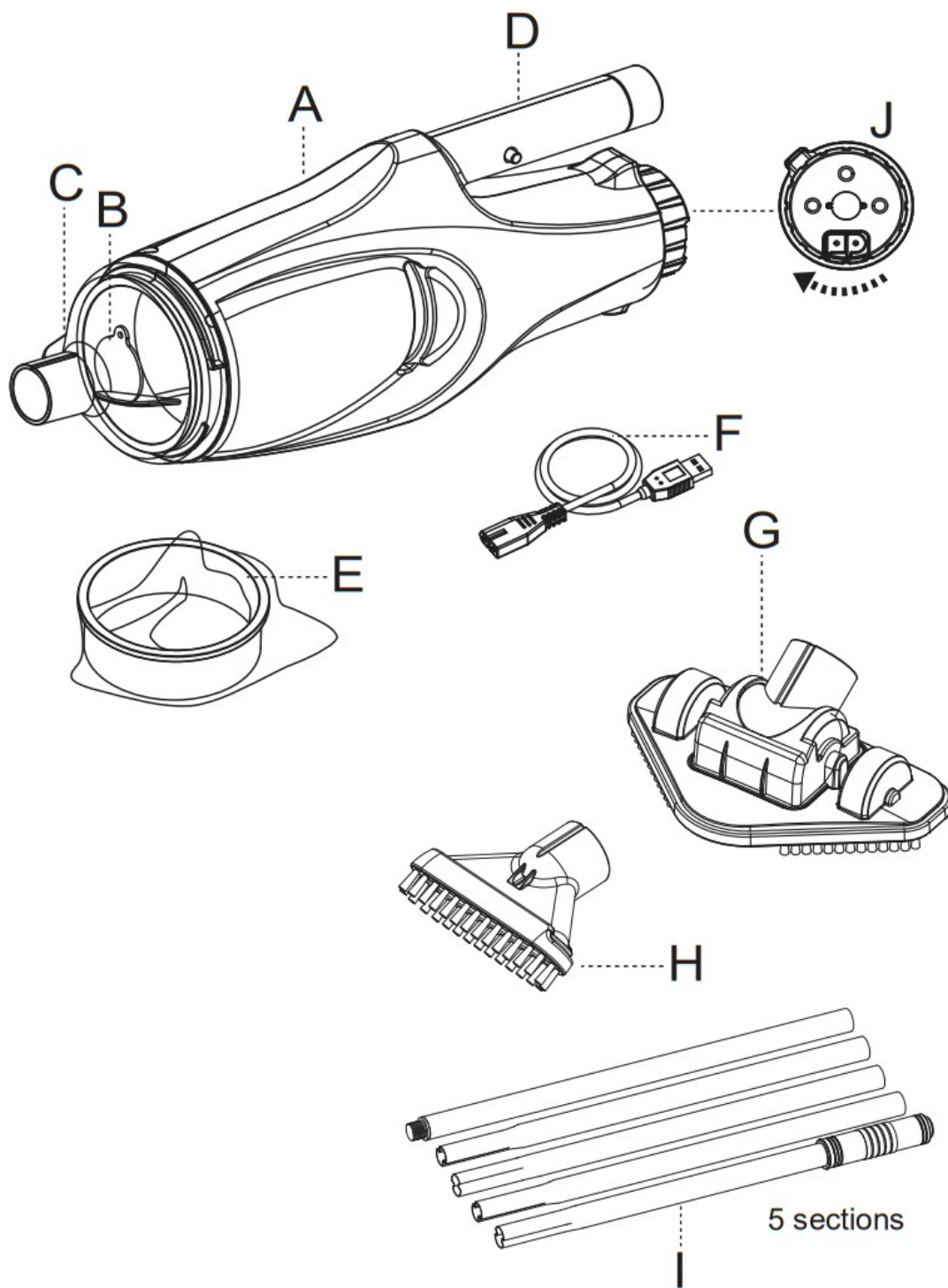


Purchase Date.....



Questions, problems, missing parts? Before returning to your retailer, call our customer service department at 866-439-9800, 8 a.m. – 8 p.m., EST, Monday – Sunday. You may also contact us anytime at ascs@lowes.com.

PARTS DIAGRAM



A.	Main body
B.	Nozzle flap
C.	Canopy
D.	Pole connector
E.	Filter bag
F.	USB charging cable
G.	Pivoting suction head
H.	Flat nozzle & brush
I.	Pole sections
J.	Switching knob (2 modes of operation: Off & Charging / Active & Standby)

Battery: Rechargeable Internal Li-ion battery pack, 2000mAh, 3.7V, 7.4Wh
Charging voltage: 5.0V DC, 1.0 A

SAFETY INFORMATION

Read and follow all instructions in this manual and on the equipment.
Failure to do so could result in severe or fatal injuries.

SAVE THESE INSTRUCTIONS

WARNING!

- This is not a TOY. Children should be kept out of reach from this electric vacuum and its accessories.
- Never allow children to operate this product.
- This electric vacuum is not intended for use by someone with reduced physical, sensory, or mental capabilities, or a lack of experience and knowledge unless they have been given instructions concerning the appliance and are under supervision of the person responsible for their safety.
- The minimum water level required to operate the device must be above the switching knob of the electric vacuum when it is held vertically. The product is only intended to be used underwater in a pool or spa; any other use will void the warranty.
- The electric vacuum must only be supplied with a safe extra-low voltage in accordance with the markings applied on it.
- Maximum operating depth in water is 2 meters (6.5 ft).
- Maximum water temperature: 5°C (41°F) – 40°C (104°F)
- Do not use this electric vacuum if any damage is detected.
- Replace damaged parts as soon as possible. Only use parts certified by the distributor or manufacturer.
- If a USB charging adaptor (not included) is used, make sure to connect it to the power source through a residual current device (RCD)/ a ground fault circuit interrupter (GFCI). If in doubt, consult a qualified, professional electrician.
- Disconnect the electric vacuum from the power source before carrying out maintenance of any kind (e.g., cleaning the filter bag).
- The battery installed is a rechargeable Li-ion battery pack. Do not attempt to replace it.

- This electric vacuum should only be charged with the included USB cable.
- DO NOT handle the electric vacuum while it is charging with wet limbs and without shoes.
- You should not operate this electric vacuum while the pool is being used.
- DO NOT use this electric vacuum without an intact filter bag /filter cage in place, as the warranty will be voided as a result.
- Suction entrapment hazard: This electric vacuum generates suction. Do not allow hair, body, or any loose parts of your clothing to be in the suction range of the electric vacuum during its operation.
- Never insert body parts, clothing, or other objects into the openings and moving parts of the electric vacuum.
- DO NOT use this electric vacuum to pick up any toxic substances, flammable, or combustible liquids such as gasoline, or in the presence of explosive or flammable fumes.
- Under no circumstances should you attempt to disassemble the electric vacuum and replace the impeller, motor, or battery by yourself.
- Do not insert any object to contact the impeller.

CAUTION!

- DO NOT attempt to use the electric vacuum to clean anything other than your pool / spa.
- Use only original accessories delivered with this product.
- DO NOT use this electric vacuum right after chlorinating/shocking the pool due to high chlorine levels. It is recommended to leave the pool circulating for at least 24-48 hours.
- Do not use this electric vacuum with another electric vacuum/cleaner simultaneously.
- Avoid picking up hard, sharp objects with this product. They may damage the electric vacuum and filter.
- Exercise caution when cleaning pool stairs.
- To avoid damaging the USB charging cable, do not carry the electric vacuum by the cable or tug the USB cable to disconnect it from the power source and product.
- Charging must be done indoors, in a well-ventilated area away from sunlight, children, heat, ignition sources, and within an ambient temperature range of 5°C (41°F) and 35°C (95°F).
- DO NOT leave the electric vacuum plugged in to the charger for over 10 hours.
- If the electric vacuum will not be used for an extended period, make sure it's switched off. Use a damp cloth to clean and dry vacuum and accessories. Make sure to charge the electric vacuum to about 30% to 50% of the battery capacity before it is stored. Store in a well-ventilated area away from sunlight, heat, ignition sources, pool chemicals, and children. Recharge the electric vacuum every three months.

Above warnings and cautions are not intended to incorporate all possible instances for risks and / or severe injuries. Pool / spa owners should always exercise extra caution and common sense when utilizing the product.

GETTING STARTED

IMPORTANT NOTE: Fully charge the electric vacuum before using it for the first time.

Charging the battery

NOTE: It requires a USB charging adaptor (not provided) with a safety output of 5.0V DC and 1.0A.

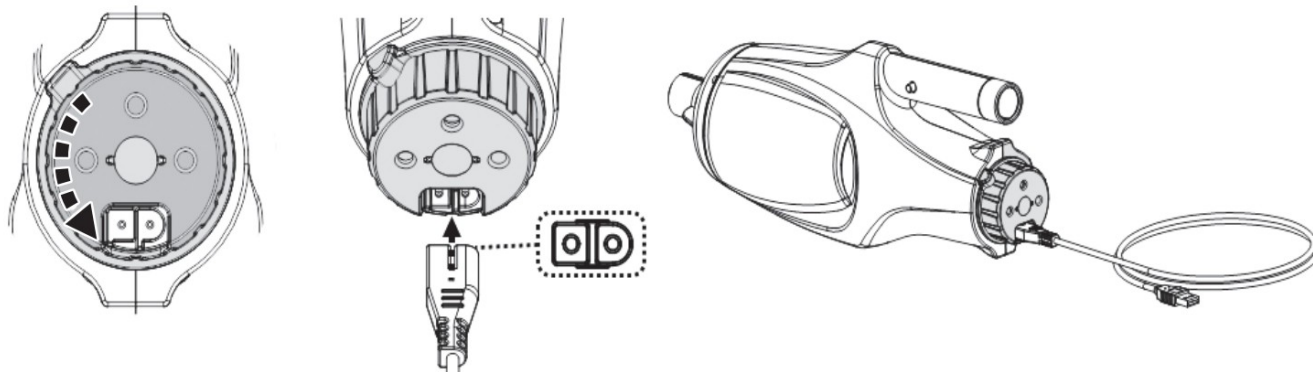
For EU market, a CE-certificated USB charging adaptor shall be used.

For US and Canada market, limited power source (LPS) or Class 2 type adaptor certificated by North America standards (such as UL 60950-1, CSA C22.2 No. 60950-1, UL 1310 and C22.2 No. 223) shall be used.

WARNING!

- Do not use the USB charging cable / USB charging adaptor if any damage is detected.
- Make sure both the electric vacuum and the charging port are clean and dry before charging them.
- Refer to the instruction manual of USB charging adaptor (not included) for instructions concerning safety and operation.

1. Place the unit on a flat surface. Turn the switching knob counterclockwise until it stops and completely exposes the charging port. Align and insert the USB charging cable into the charging port.



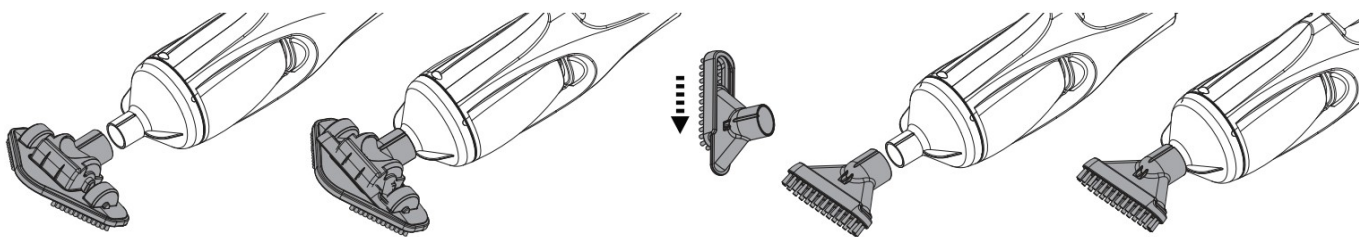
2. Connect the USB charging cable to the charging adaptor (Not Included), then plug the charging adaptor to the power source.
3. Once the electric vacuum begins charging, the indicator light at the end of the vacuum will turn red. Normally, it takes about 4.5 – 6 hours to reach a full charge. The indicator light will turn green once the electric vacuum is almost fully charged.
4. When charging is complete, disconnect the charging adaptor from the power source and unplug the USB cable from the adaptor and electric vacuum.

NOTE:

- Charge the electric vacuum completely (about 7-8 hours) before using it for the first time.
- Always disconnect the USB charging adaptor from the power source as soon as charging is complete.
- Immediately turn the power off and disconnect the USB charging adaptor from the power source if you detect any of the following conditions: offensive or unusual odor, excessive heat, deformation, cracks, leaks, or smoke.
- Normally, the electric vacuum can operate up to 40 minutes on a full charge (after 4.5-6 hours of charging)
- Clean the filter regularly. Excessive debris inside the filter will increase burden to the motor operation and shorten the operating duration as a result.
- Rechargeable lithium-ion battery is classified as a consumable item. It has a limited life and will gradually lose its capacity to hold a charge. Therefore, the running time of the electric vacuum will gradually reduce after repeated charging and discharging throughout its product life.
- Let the electric vacuum rest for 30 to 40 minutes before charging it again.

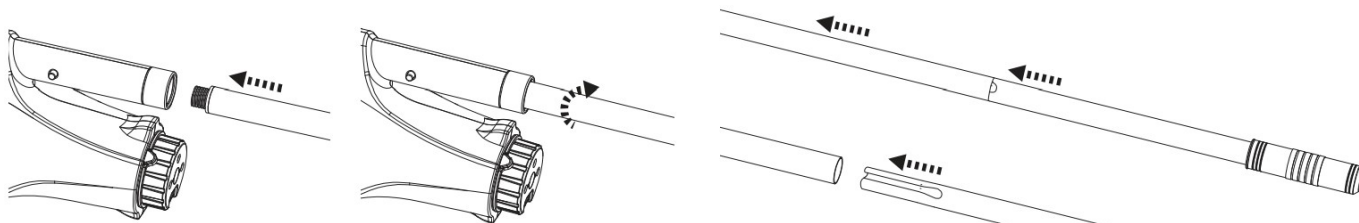
ASSEMBLY

Pivoting suction head & flat nozzle

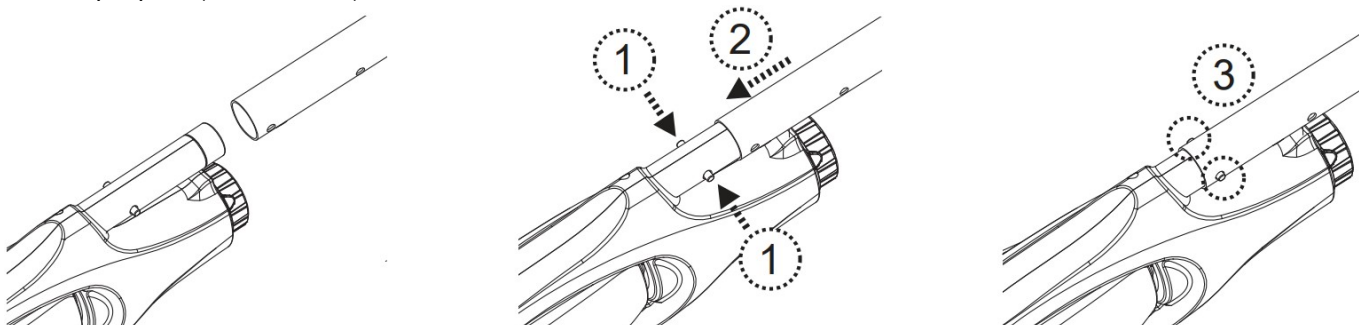


Note: For vinyl liner and fiberglass pools / spas, it is recommended to keep the brush on the flat nozzle to avoid damaging the pool / spa

Pole (5 Sections)



Telescopic pole (not included)

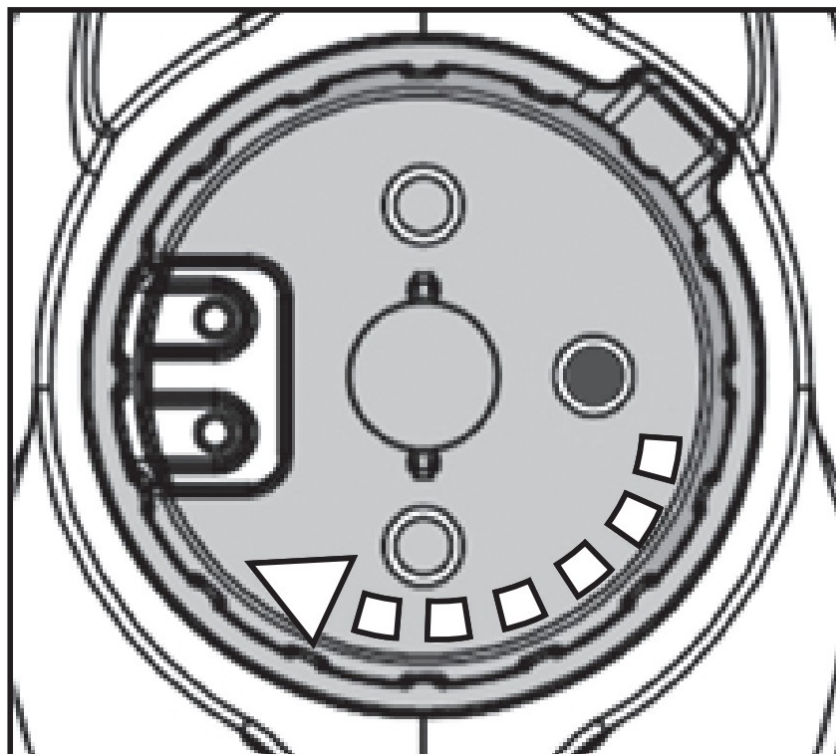


1. Press down on both side tabs.
2. Slide telescopic pole over pole connector
3. Allow tabs to snap into side holes on pole.

To release the telescopic pole, press down on both the side tabs simultaneously, and then pull out the pole.

OPERATION

Vacuum must be turned on and placed under water to operate.



1. Before immersing the electric vacuum in water, turn the switching knob clock wise until it comes to a halt (you will hear a 'click") to expose the two water-sensing pins and a green dot on the right side.
2. Lower the vacuum into the pool. As soon as both pins make contact with water, the motor will start running.
3. Continue lowering so that the pivoting head makes contact with the bottom of the pool, and slowly move the vacuum across the bottom to collect debris into the filter bag of the vacuum
4. When filter bag is full or task is complete, remove vacuum from the pool / spa, lift the vacuum while pointing it downwards in order to allow water to discharge.

Vacuum will stop running as soon as the water-sensing pins are no longer in contact with water.

5. Turn the switching knob counterclockwise until it comes to a halt, setting the vacuum in Power Off mode. Then, you can empty the filter bag and charge the vacuum for the next use.

CAUTION

- DO NOT cover the side slot (middle gap) of the electric vacuum during operation, the impeller / motor may be damaged otherwise.
- Remove the electric vacuum from the pool/spa as soon as cleaning is complete.
- Make sure the electric vacuum is always pointing downwards when it is placed into the pool. Otherwise, the pole connector may be bent and damaged as a result.

NOTE: Rinse the electric vacuum with fresh water after every use. DO NOT use any detergent.

EMPTYING THE FILTER BAG

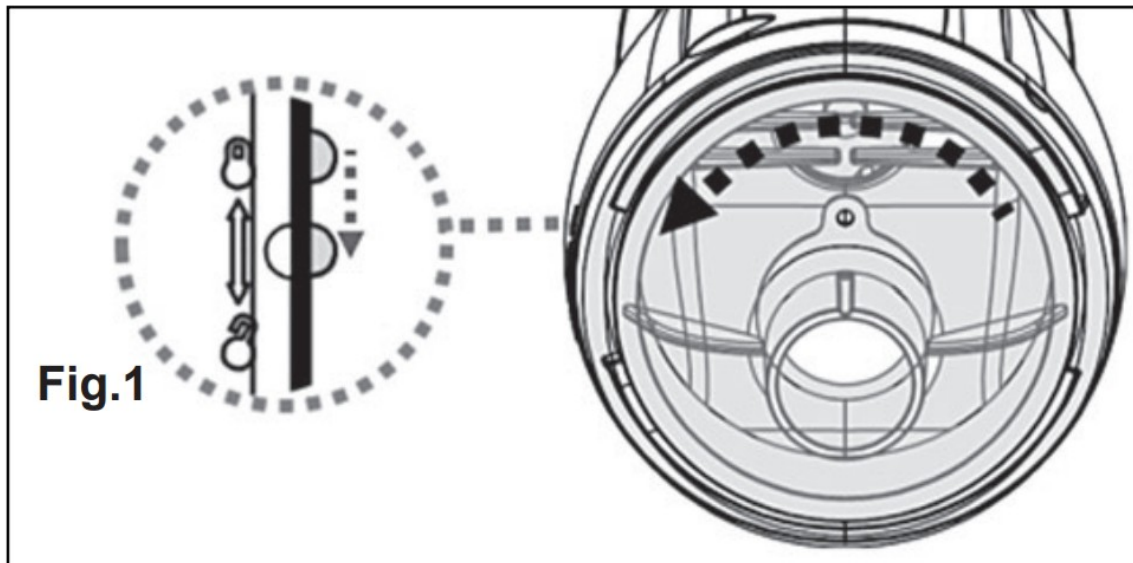
WARNING! Using the electric vacuum without a filter bag in place will VOID your warranty.

To maximize the cleaning efficiency of the cleaner, be sure to clean the filter bag before and after each use.

CAUTION! If the electric vacuum is charging, disconnect the USB charging adaptor from the power source and detach the electric vacuum from the USB charging cable before making any attempts to clean it.

1. Place the electric vacuum on a stable surface.

2. Hold the electric vacuum body and turn the canopy counterclockwise until the marking on the canopy reaches the lock-unlock marking. (Fig.1) Detach the canopy and remove the debris bag from the electric vacuum
3. Clean out the debris and rinse the debris bag with water.
If brushing is deemed necessary, use only a soft brush to clean it gently and carefully.
4. Place the filter bag inside the electric vacuum. Reverse the steps to align and attach the canopy to electric vacuum and turn the canopy clockwise until it comes to a halt.



MAINTENANCE & STORAGE

1. Battery discharges on its own during storage. The battery should be stored at room temperature, charged to about 30% to 50% of its capacity.
2. You must recharge the battery at least once every three months if it is not frequently used.
 - Disconnect all USB charging peripherals.
 - Detach all accessories from the electric vacuum. If necessary, rinse the electric vacuum and accessories with fresh water. DO NOT use detergent.
 - Be sure to drain the water from the electric vacuum before storing it.
 - Use a damp cloth to clean and dry the electric vacuum and its accessories.
 - Store them in a well-ventilated area away from the sunlight, children, heat, ignition sources, and pool chemicals. Ambient temperature for storage should be 10°C – 25°C (50°F – 77°F). NOTE: A higher temperature may reduce the battery life during storage.

WARNING!

- Under no circumstances should you attempt to disassemble the electric vacuum and replace the impeller, motor or battery by yourself.

CAUTION!

- Excessive heat can damage the battery and reduce the lifespan of your electric vacuum as a result.
- Consult your dealer regarding battery replacement if the following happens:
 - Battery appears damaged or will not charge fully.
 - Battery operation time is noticeably reduced. Observe and record the run times of the first few operations (on

a full charge). Use these run times as a reference point to compare with run times of older batteries.

- The battery is to be disposed safely in accordance with local ordinances or regulations.


NOTE: Incorrect maintenance may reduce the battery life and affect its capacity as a result.

TROUBLESHOOTING

Problem	Possible Cause	Solution
Electric vacuum does not capture the debris	Battery is drained	Charge the battery again.
	Impeller is jammed	Power off the electric vacuum and inspect the middle gap of the electric vacuum to see if the impeller is jammed by larger debris. If possible, use a small tool to remove it with intensive care & caution. WARNING! Make sure the electric vacuum is powered off when the unit is being serviced.
	Impeller is broken	Replace main body
	Debris bag is full	Clean the filter bag.
Debris escapes from the vacuum	Canopy flap is damaged	Canopy flap works like a door to prevent the debris from escaping from the canopy. Replace with new flap
	Debris bag is damaged.	Replace with a new filter bag
	Debris is too fine	Filter bag will not collect fine silt or algae less than 250 micron in size.
Electric vacuum cannot be charged / recharged	Battery is damaged	WARNING! DO NOT open the electric vacuum and replace the battery by yourself. This could result in severe or fatal injuries, as well as voiding the warranty.
	USB cable is damaged	Replace with a new USB cable.
	USB charger (not included) is out of order	Replace with a new USB charger.
Pivoting suction head does not move smoothly	Wheel is jammed	Clean out the debris from the wheel. Note: Do not attempt to take out the wheels.



Documents / Resources

	<p>PROJECT SOURCE RPV5-PS Handheld Pool Vacuum [pdf] User Manual RPV5-PS Handheld Pool Vacuum, RPV5-PS, Handheld Pool Vacuum, Pool Vacuum, Vacuum</p>
---	---

References

- [User Manual](#)