

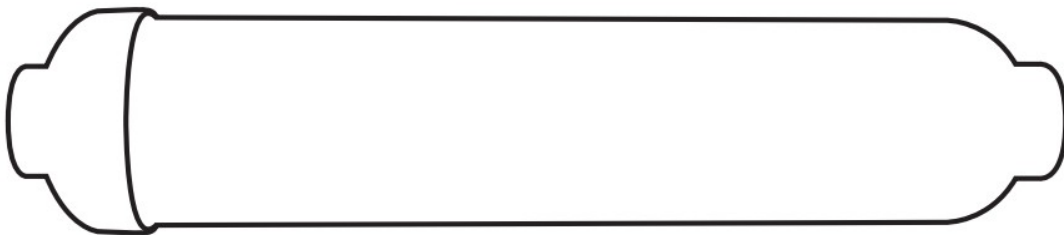


PROJECT SOURCE IN1025-2 Inline Water Filter Instruction Manual

[Home](#) » [PROJECT SOURCE](#) » PROJECT SOURCE IN1025-2 Inline Water Filter Instruction Manual 



ITEM4
INLINE WATER FILTER
MODEL IN1025-2



Contents

- [1 IN1025-2 Inline Water Filter](#)
- [2 TROUBLESHOOTING](#)
- [3 CARE AND MAINTENANCE](#)
- [4 SAFETY INFORMATION](#)
- [5 INSTALLATION OVERVIEW](#)
- [6 SPECIFICATIONS](#)
- [7 Documents / Resources](#)
 - [7.1 References](#)
- [8 Related Posts](#)

IN1025-2 Inline Water Filter

Thank you for purchasing this Project Source Inline Water Filter. We've created these easy-to-follow instructions to ensure you have a simple installation process. But, if you need more information than what is provided here, please visit [Lowes.com](https://www.lowes.com), search the item number and refer to the Guides & Documents tab on the product's page. If the item is no longer for sale, or if you have any questions or problems, please call our customer service department at 1-866-389-8827, 8 a.m. – 8 p.m., EST, Monday – Sunday. You could also contact us at partsplus@lowes.com or visit www.lowespartsplus.com.

TROUBLESHOOTING

PROBLEM	POSSIBLE CAUSE	CORRECTIVE ACTION
Leaking	Improper Installation	Remove and reinstall, ensuring the tubing is securely installed into both inlet and outlet sides of filter.

CARE AND MAINTENANCE

Replace filter every 6 months.

WARRANTY

This replacement filter cartridge is warranted to be free from defects in material and manufacture for one (1) year from the date of purchase. This warranty does not cover any failures resulting from abuse, misuse, alteration, or damage not caused by the manufacturer or failure to follow proper installation and use instructions. If the product fails to satisfy this limited warranty during the described period, the manufacturer will replace or refund the purchase price of the product. This warranty does not cover additional costs such as labor.



SAFETY INFORMATION

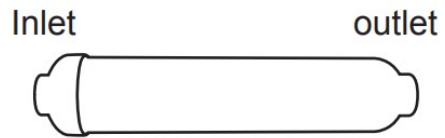
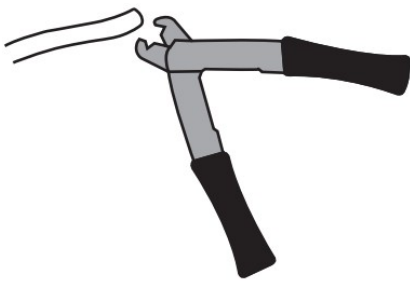
WARNING

To reduce the risk of property damage due to water leakage, this filter **MUST** be installed in accordance with the manufacturers specifications and instructions. Installation shall comply with applicable state and local regulations. For cold water applications only. Do not use with water that is microbiologically unsafe or of unknown quality without adequate disinfection before or after the system. Systems certified for cyst reduction may be used on disinfected waters that may contain filterable cysts. This filter unit must be replaced every 6 months, at the rated capacity, or sooner if reduced water flow occurs. Failure to follow instructions and operating specifications will void your warranty. Further, manufacturer assumes no responsibility or liability for damages arising out of misuse of the product. Protect from freezing.

INSTALLATION OVERVIEW

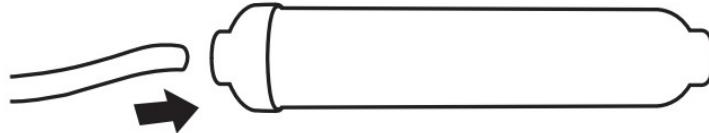
When installing the filter for the first time, please follow the instructions below:

1. Turn off the water supply.
2. Locate a convenient location behind refrigerator where you can install the filter on 1/4" tubing.
3. Cut the tubing of the refrigerator supply line using a tube cutter. Please ensure that the edges of the tube are cut clean, square cut and free of sharp burrs. **DO NOT** cut the tubing at an angle as it may cause the unit to leak during use.

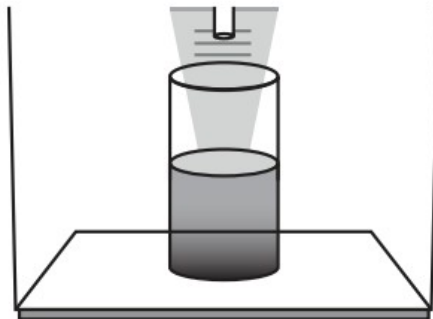


Note: The incoming water should be routed to the inlet (larger end of filter) and the filtered water should be coming from the outlet (smaller end of filter).

4. Firmly insert tubing into the inlet side of the filter.



5. Run water from the water and ice dispenser periodically to clear the system and to receive a good flow for approximately 5 minutes. If the water flow is slower than usual, please repeat Step 4.



Note: Initial flow rate may be slower than expected. Full flow rate should be restored within 24-36 hours.

6. Turn off the water supply.
7. Firmly insert tubing into the outlet side of the filter. Make sure to install the tubing firmly until the tubing bottoms out. Turn on the water supply and inspect the filter for leaks.



SPECIFICATIONS

Flow Rate:	.5 gpm (1.89 lpm)
Operating Temperature:	40°-100°F (4.4°-38°C)
Min Operating Pressure:	20 psi (138 kPa)
Max Operating Pressure:	125 psi (862 kPa)
Capacity:	3000 gallons (11,356 liters)

Printed in USA.
Impreso en EE. UU.



[PROJECT SOURCE IN1025-2 Inline Water Filter](#) [pdf] Instruction Manual
IN1025-2 Inline Water Filter, IN1025-2, Inline Water Filter, Water Filter, Filter

References

- [Lowe's Parts Plus](#)