



PROGRESS Ombre 2 Slice Toaster Instruction Manual

[Home](#) » [PROGRESS](#) » [PROGRESS Ombre 2 Slice Toaster Instruction Manual](#) 

Progress®

Est 1931

2-SLICE TOASTER Instruction Manual

Please read all of the instructions carefully and retain them for future reference.

Contents

- [1 Safety Instructions](#)
- [2 Care and Maintenance](#)
- [3 Description of Parts](#)
- [4 Before First Use](#)
- [5 Using the Ombre 2-Slice Toaster](#)
- [6 Storage](#)
- [7 Specification](#)
- [8 Guarantee](#)
- [9 Documents / Resources](#)
- [10 Related Posts](#)

Safety Instructions

When using electrical appliances, basic safety precautions should always be followed.
Check that the voltage indicated on the rating plate corresponds with that of the local network before connecting

the appliance to the mains power supply.

Children aged from 8 years and people with reduced physical, sensory or mental capabilities or lack of experience and knowledge can use this appliance, only if they have been given supervision or instruction concerning the use of the appliance in a safe way and understand the hazards involved.

Children should be supervised to ensure that they do not play with the appliance.

Unless they are older than 8 and supervised, children should not perform cleaning or user maintenance.

This appliance is not a toy.

This appliance contains no user-serviceable parts. If the supply cord, plug, or any part of the appliance is malfunctioning, or if it has been dropped or damaged, only a qualified electrician should carry out repairs. Improper repairs may place the user at risk of harm.

Keep the appliance and its power supply cord out of the reach of children.

Do not immerse the electrical components of this appliance in water or any other liquid.

Do not leave the appliance unattended whilst connected to the mains power supply.

Use of an extension cord with the appliance is not recommended.

This appliance should not be operated by means of an external timer or separate remote control system.

This appliance is intended for domestic use only. It should not be used for commercial purposes.

If this appliance falls or accidentally becomes immersed in water, unplug it from the wall outlet immediately.

Do not reach into the water.



Caution: Hot surface — do not touch the hot section or heating components of the appliance.

Take care not to pour water on the heating element.

Do not toast pastries with runny fillings or frosting.

Do not toast torn slices of bread.

Warning: Keep the appliance away from flammable materials.

Care and Maintenance

STEP 1: Before attempting any cleaning or maintenance, unplug the toaster from the mains power supply and allow it to fully cool.

STEP 2: Wipe the toaster housing with a soft, damp cloth and dry thoroughly.

STEP 3: Remove crumbs from inside the base of the toaster by sliding open the crumb tray.

Never use harsh or abrasive cleaning detergents or scourers to clean the toaster, as this could damage the surface.

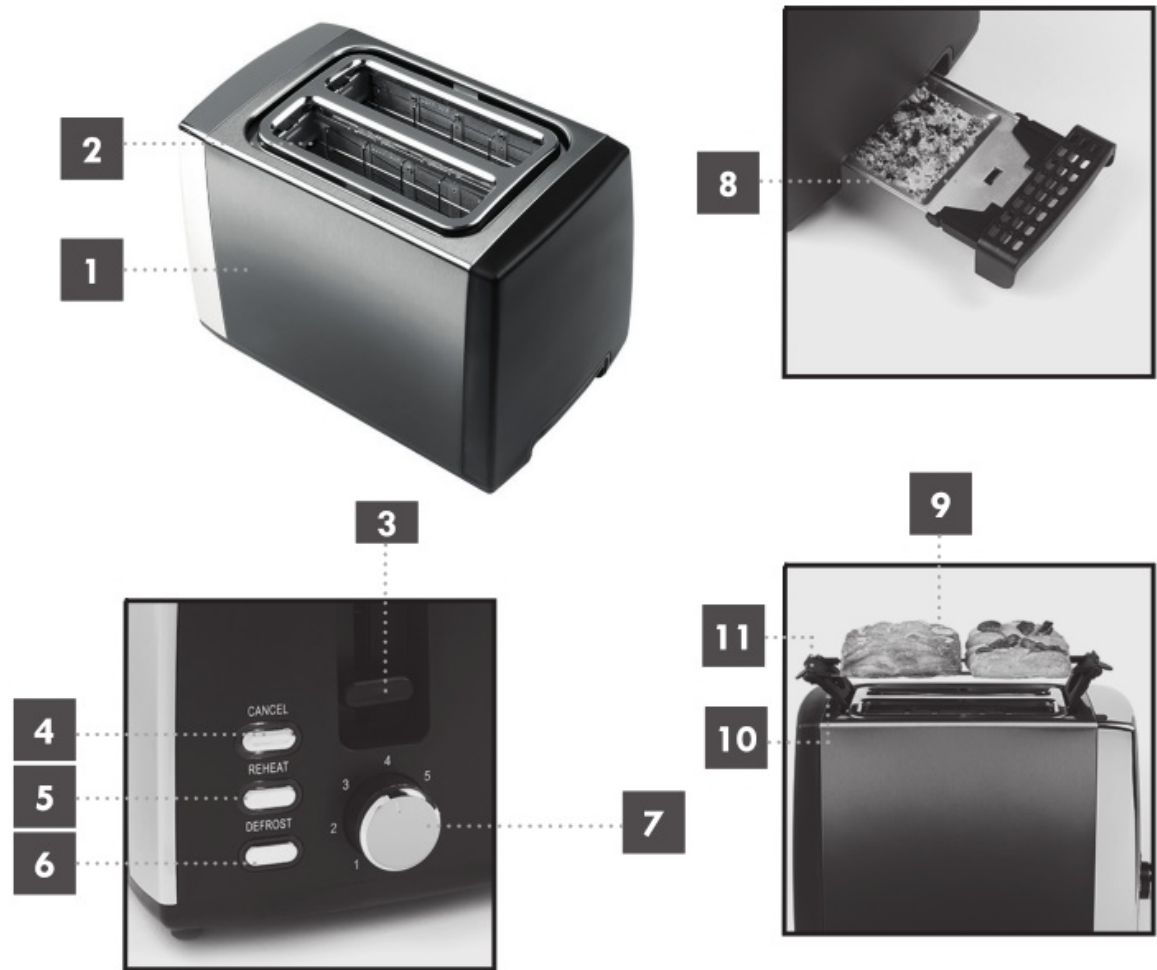
Caution: Never place fingers near or inside the toasting slots. Always unplug the toaster and allow it to cool thoroughly before attempting to remove any bread that has become stuck inside the toasting slot.

Take care when removing food from the toasting slot to avoid damage to the internal mechanism and heating element.

Do not allow crumbs to build up inside the base of the toaster.

Do not operate the toaster without bread, as this may cause damage to the toaster.

Description of Parts



1. Toaster housing	7. Browning control dial
2. Toasting slot(s)	8. Removable crumb tray
3. Loading lever	9. Bun warming rack
4. Cancel button	10. Bun warming rack legs
5. Reheat button	11. Bun warming rack handle(s)
6. Defrost button	

Before First Use

Before using the toaster for the first time, wipe the toaster housing with a soft, damp cloth and dry thoroughly. Do not immerse the toaster in water or any other liquid. Never use harsh or abrasive cleaning detergents or scourers to clean the toaster, as this could cause damage.

Note: When using a toaster for the first time, a slight smoke or odour may be emitted. This is normal and will so on subside. Allow for sufficient ventilation around the toaster.

Using the Ombre 2-Slice Toaster

STEP 1: Place the toaster onto a flat, stable surface at a height that is comfortable for the user. Make sure that the crumb tray is pushed fully into the toaster and that the loading lever is in the upright position, with no bread or other objects inserted into the toasting slots.

STEP 2: Plug in and switch on the toaster at the mains power supply. Then turn the browning control dial to the desired setting. Select 3-4 for medium brown toast.

STEP 3: Insert the bread or toasting food into the toasting slot(s) and lower the loading lever until it is locked into place. Toasting will begin when the lever is fully down.

STEP 4: When the toast reaches the desired browning level, the toast will pop up automatically. Turn the toaster off and unplug it from the mains power supply.

STEP 5: Remove the food and any crumbs from the toasting slot(s) using heat-resistant gloves.

Note: To interrupt toasting mid-setting, press the cancel button (▲) will remain illuminated throughout the toasting cycle. **Caution:** Never use a fork or sharp-edged utensil to remove toast, as this may damage the heating element or cause injury.

Using the Defrost/Reheat Setting

Insert the frozen or cold bread into the toasting slot(s) and lower the loading lever until it is locked into position.

Press '❄' / '🌀' to activate the setting.

Automatic Centring Guides

Lowering the loading lever closes the centering guides and holds the bread centrally in the toasting slots.

Using the Bun Warming Rack

STEP 1: Unfold the bun warming rack by opening out the legs on either end of the rack. The legs will swivel and click into position.

STEP 2: Turn the toaster off and unplug it from the mains power supply.

STEP 3: Place the bun warming rack lengthwise onto the top of the toaster so that the bun warming rack legs fit on the edge of the toaster housing. Then plug in and switch on the toaster at the mains power supply.

STEP 4: Place the buns/pastries to be heated onto the bun warming rack and turn the browning control dial to the desired setting.

STEP 5: Lower the loading lever until it is locked into place. Warming will begin when the lever is fully down.

STEP 6: When the warming cycle is complete the loading lever will pop up. Turn off the toaster and unplug it from the mains power supply. Remove the buns/pastries using heat-resistant gloves.

STEP 7: Once cooled remove the bun warming rack from the top of the toaster by gently pulling one of the bun warming rack handles, then fold the legs and store.

Storage

The toaster must be cool, clean and dry before storing in a cool, dry place.

Never wrap the cord tightly around the toaster; wrap it loosely to avoid causing damage

Specification

Product code: EK3862P-VDE

Input: 220-240 V— 50/60 Hz

Output: 780-930 W

UP Global Sourcing UK Ltd.,

Victoria Street, Manchester OL9 [ODD.UK](http://www.odd.uk).

If this product does not reach you in an acceptable condition please contact our Customer Services Department at www.progresscookshop.com.

Please have your delivery note to hand as details from it will be required. If you wish to return this product, please return it to the retailer from where it was purchased with your receipt (subject to their terms and conditions).

Guarantee

All products purchased as new carry a manufacturer's guarantee; the time period of the guarantee will vary dependent upon the product. Where reasonable proof of purchase can be provided, Progress will provide a standard 12-month guarantee with the retailer from the date of purchase. This is only applicable when products have been used as instructed for their intended, domestic use. Any misuse or dismantling of products will invalidate any guarantee.

Under the guarantee, we undertake to repair or replace free of any charge any parts found to be defective. In the event that we cannot provide an exact replacement, a similar product will be offered or the cost refunded. Any damages from daily wear and tear are not covered by this guarantee, nor are consumables such as plugs, fuses, etc.

Please note that the above terms and conditions may be updated from time to time and we, therefore, recommend that you check these each time you revisit the website.

Nothing in this guarantee or in the instructions relating to this product excludes, restricts, or otherwise affects your statutory rights.

The crossed-out wheelie bin symbol on this item indicates that this appliance needs to be disposed of in an environmentally friendly way when it becomes of no further use or has worn out. Contact your local authority for details of where to take the item for recycling.



Progress®

Manufactured by:
UP Global Sourcing UK Ltd.,
Victoria Street,
Manchester OL9 0DD. UK.
MADE IN CHINA.
CD061219/MD110220/V2



Manchester
OL9 0DD
United Kingdom www.upgs.com

t +44 (0) 161 627 1400
f: 4-44 (0) 161 628 2126
hk: +852 6681 9752
cn: +86 1 3417586804

Artworker: Ellie Drinkwater
Date: 04/05/2020
Project Name: EEK200146 UPG EK3862PBLK-VDE
Type of Artwork: Instruction Manual
Size: AS 8 PP Instruction Manual
Software Used: Indesign CC19
Typefaces: DA/ Cen MT



Cyan



Magenta



Yellow



Black



PMS 556 C



PMS



PMS



PMS

Artwork Versio 1

Artwork Scale 1:1

@2020 UP Global Sourcing. All designs, images and artwork are the copyright of UP Global Sourcing. No copying, alterations or amendments to the artwork, design can be undertaken without prior written permission of UP Global Sourcing. Any costs incurred as a result of unauthorised amendments will be recovered from the supplier responsible.

DO NOT PRINT THIS PAGE ARTWORK REFERENCE ONLY

Documents / Resources



[PROGRESS Ombre 2 Slice Toaster](#) [pdf] Instruction Manual
Ombre 2 Slice Toaster