




PROGRESS LIGHTING P8728-09 Nickel Mixed Material Linear Inline Connector Instruction Manual

[Home](#) » [PROGRESS LIGHTING](#) » PROGRESS LIGHTING P8728-09 Nickel Mixed Material Linear Inline Connector Instruction Manual 



CAUTION: Read instructions carefully and turn electricity off at main circuit breaker panel before beginning installation.

Contents

- [1 P8728-09 Nickel Mixed Material Linear Inline Connector](#)
- [2 IMPORTANT SAFETY INSTRUCTIONS](#)
- [3 Documents / Resources](#)
- [4 Related Posts](#)

P8728-09 Nickel Mixed Material Linear Inline Connector

WARNING If any Special Control Devices are used with this Fixture Follow the Instructions Carefully to assure full compliance with N E C requirements If there are any questions, contact a Qualified Electrical Contractor.

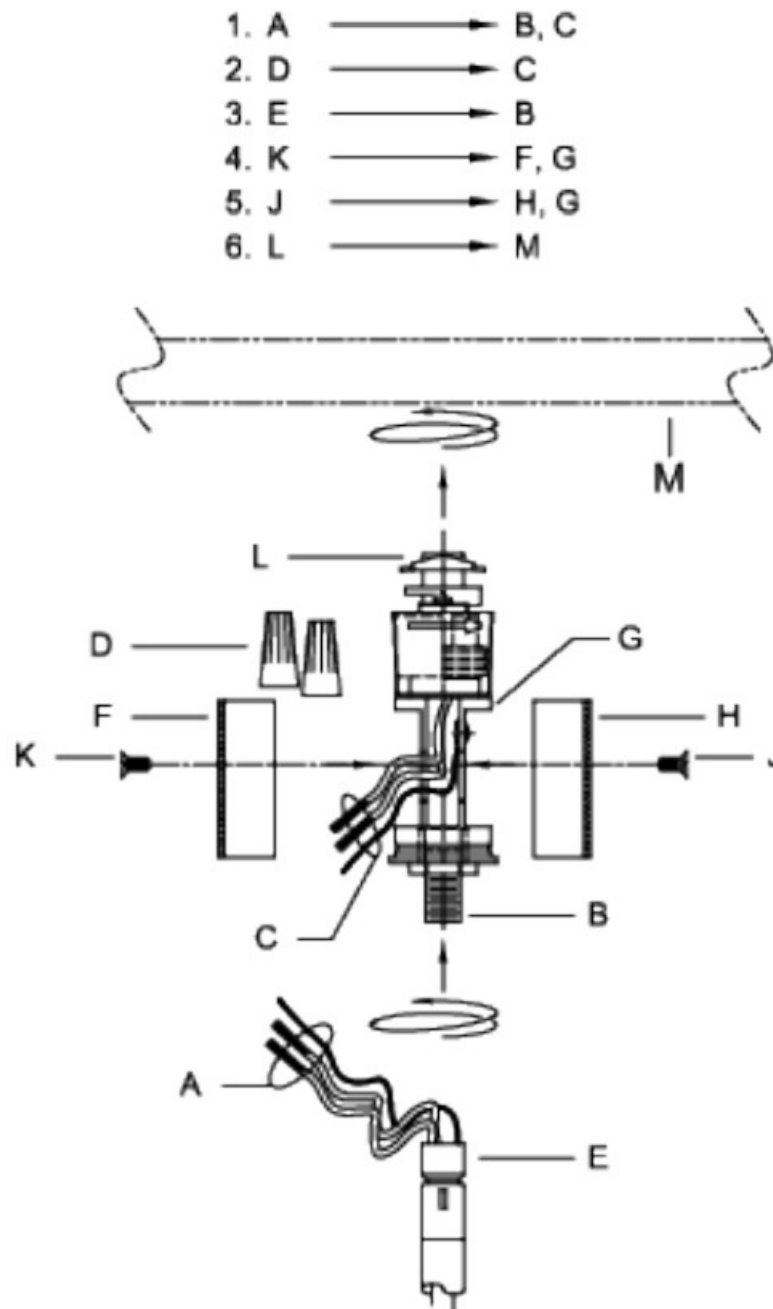
CAUTION – All glass is fragile, use care when handling Glass Shade and lamps. **WARNING** – This product contains chemicals known to the State of California to cause cancer, birth defects and /or other reproductive harm Thoroughly wash hands after installing, handling, cleaning, or otherwise touching this product.

WARNING – This FIXTURE ASSEMBLY is to be used with PROGRESS TRACK, or other PROGRESS TRACK ACCESSORIES only.

IMPORTANT NOTICE:

- This is a generic Instruction sheet used for various fixtures.
- Fixture shape and style may vary.
- Glass/Shade/Diffuser shape and style may vary.

ASSEMBLY STEPS:



A. E & M
(NOT FURNISHED)

IMPORTANT SAFETY INSTRUCTIONS

WHEN INSTALLING OR USING THIS FIXTURE ASSEMBLY, THE FOLLOWING BASIC SAFETY PRECAUTIONS SHOULD ALWAYS BE FOLLOWED:

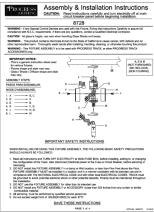
1. Read all Instructions and **TURN OFF ELECTRICITY** at MAIN FUSE BOX, before installing, adding to, or changing the configuration of the Track, Also disconnect Electrical power at the Fuse or Circuit Breaker, before

servicing or relamping.

2. DO NOT install this FIXTURE ASSEMBLY in a damp or Wet location, or less than Five Feet above the Floor. FIXTURE ASSEMBLY MUST be installed in a location and in a manner consistent with its intended use and in compliance with The NATIONAL ELECTRICAL CODE and with other local ELECTRICAL CODES. TRACK must be grounded to avoid potential electrical shock or other potential hazards. Polarity must be maintained throughout the Installation.
3. DO NOT use this FIXTURE ASSEMBLY for other than its intended use.
4. DO NOT install any FIXTURE ASSEMBLY or ACCESSORY closer than SIX inches from any curtain or similar combustible material.
5. All servicing, must be performed by qualified service personnel.
6. Do not exceed weight limit of 35LBS(15.8KG) for each 8777.

SAVE THESE INSTRUCTIONS

Documents / Resources

	<p>PROGRESS LIGHTING P8728-09 Nickel Mixed Material Linear Inline Connector [pdf] Instruction Manual</p> <p>P8728-09, Nickel Mixed Material Linear Inline Connector, Material Linear Inline Connector, Nickel Mixed Inline Connector, Inline Connector, Connector</p>
--	---