




PROGRESS LIGHTING 8760 Alpha Trak T-Bar End Feed Instruction Manual

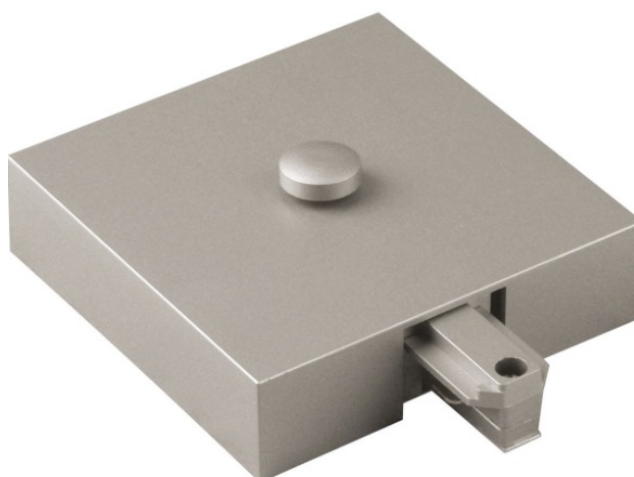
[Home](#) » [PROGRESS LIGHTING](#) » PROGRESS LIGHTING 8760 Alpha Trak T-Bar End Feed Instruction Manual 

Contents

- [1 PROGRESS LIGHTING 8760 Alpha Trak T-Bar End Feed](#)
- [2 IMPORTANT SAFETY INSTRUCTIONS](#)
- [3 Documents / Resources](#)
- [4 Related Posts](#)



PROGRESS LIGHTING 8760 Alpha Trak T-Bar End Feed



IMPORTANT SAFETY INSTRUCTIONS

SAVE THESE INSTRUCTIONS

REFER TO THEM WHEN ADDITIONS TO OR CHANGES IN THE TRACK CONFIGURATION ARE MADE

WARNING- If any Special Control Devices are used with this Fixture, Follow the Instructions Carefully to assure full compliance with N.E.C. requirements. If there are any questions, contact a Qualified Electrical Contractor.

WARNING- This product contains chemicals known to the State of California to cause cancer, birth defects, and or other reproductive harm. Thoroughly wash hands after installing, handling, cleaning, or otherwise touching this product.

1. This TRACK ACCEsSORY is to be used with PROGRESS TRACK 1 TRACK only.
2. DO NOT attempt to power this TRACK ACCESSORY with any form of power supply cord from a wall receptacle, or to attach any form of convenience receptacle to this TRACK
3. This TRACK ACCESSORY is to be supplied by a single branch circuit such as a 120 soft circuit with a grounded neutral.
4. Use of this TRACK SYSTEM with dimmers, and timing controls. energy-saving devices. special security switching or could create a safety hazard. Obtain professional advice before using this TRACK SYSTEM with other devices.


WHEN INSTALLING OR USING THIS TRACK SYSTEM, BASIC SAFETY PRECAUTIONS

SHOULD ALWAYS BE FOLLOWED INCLUDING:

1. Read all instructions and **TURN OFF ELECTRICITY** at **MAIN FUSE BOX**. before installing adding to, or changing the configuration of the TRACK. Also disconnect electrical power at the fuse or circuit breaker, before servicing or relamping
2. **DO NOT** install this **TRACK ACCESSORY** in a damp or wet location, or less than five(5) feet above the floor. **TRACK MUST** be installed in a location and a manner consistent with its intended use and in compliance with the **NATIONAL ELECTRICAL CODE** and with other, local **ELECTRICAL CODES**. **TRACK** must be **GROUNDED** to avoid potential hazards. Polarity must be maintained throughout the Installation.
3. **DO NOT** use this **TRACK ACCESSORY** for other than its intended use. **DO NOT** attempt to energize anything other than PROGRESS TRACK 1 TRACK from this **TRACK ACCESSORY**. To reduce the risk of fire and electric shock, **DO NOT** attempt to connect power tools or extension cords. appliances, and the like to this TRACK ACCESSORY.
4. DO NOT install any **TRACK LIGHTING FIXTURE ASSEMBLY** or **ACCESSORY** closer than six (6) inches from any curtain or similar combustible material.
5. All servicing. **MUST** be performed by qualified service personnel.

SAVE THESE INSTRUCTIONS

Documents / Resources

	<p>PROGRESS LIGHTING 8760 Alpha Trak T-Bar End Feed [pdf] Instruction Manual 8760 Alpha Trak T-Bar End Feed, 8760, Alpha Trak T-Bar End Feed, Trak T-Bar End Feed, T-Bar End Feed, End Feed, Feed</p>
---	---

