



# PROGRESS LIGHTING 8727 Alpha Trak Fixture Adapter Instruction Manual

[Home](#) » [PROGRESS LIGHTING](#) » PROGRESS LIGHTING 8727 Alpha Trak Fixture Adapter Instruction Manual 

## Contents

- [1 PROGRESS LIGHTING 8727 Alpha Trak Fixture Adapter](#)
- [2 Assembly & Installation Instructions](#)
- [3 FOR USE WITH CHAIN HUNG FIXTURES \(FIGURE 1A\)](#)
- [4 FOR USE WITH CHAIN HUNG FIXTURES \(FIGURE 1B\)](#)
- [5 Documents / Resources](#)
- [6 Related Posts](#)



## PROGRESS LIGHTING 8727 Alpha Trak Fixture Adapter



## Assembly & Installation Instructions

**CAUTION:** Read instructions carefully and turn electricity off at main Circuit breaker panel before Beginning installaton.

**WARNING** – f any Special Control Devices are used with this Fixture, Follow the Instructions Carefully to assure full compliance with N.E.C. requirements. f there are any questions, contact a Qualified Electrical Contractor.

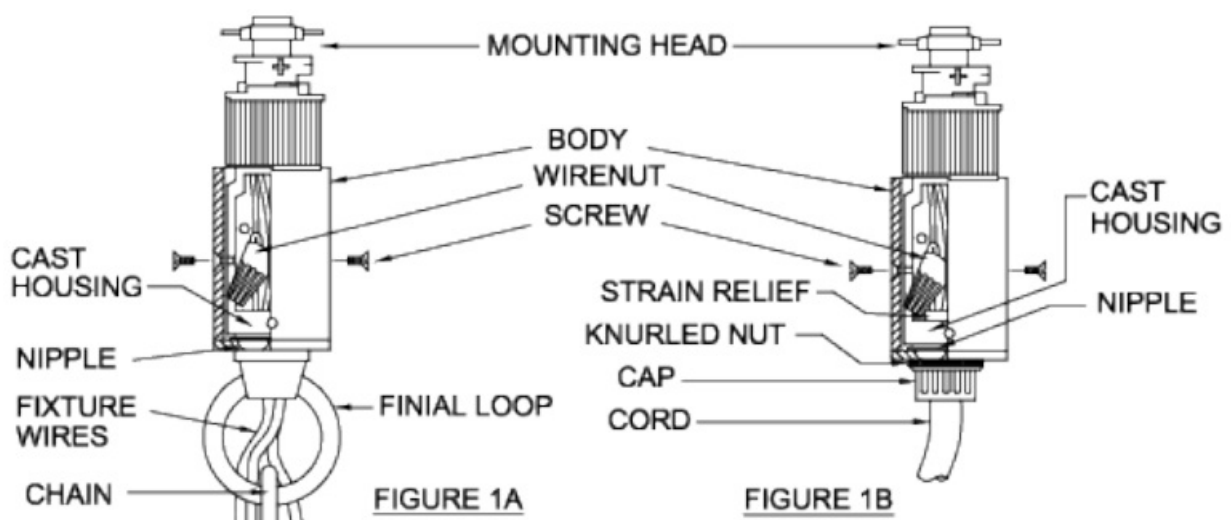
**WARNING**-This product contains chemicals known to the State of California to cause cancer, birth defects and /or other reproductive ham. Thoroughly wash hands after install ing. handling. cleaning. or otherwise touching this product

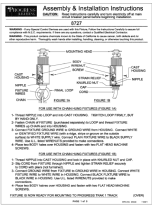
### FOR USE WITH CHAIN HUNG FIXTURES (FIGURE 1A)

1. Thread NIPPLE into LOOP and into CAST HOUSING. TIGHTEN LOOP FIRMLY, BUT BY HAND ONLY.
2. Fasten CHAIN of FIXTURE (purchased separately) to L0OP and thread FIXTURE WIRES up CHAIN and into HOUSING.
3. Connect FIXTURE GROUND WIRE to GROUND WIRE from HOUSING. Connect WHITE or IDENTIFIED FIXTURE WIRE (with a ridge, stripe or groove on the outside surface) to WHITE SUPPLY wire. Connect PLAIN FIXTURE WIRE to BLACK SUPPLY WIRE. Use U.L. listed WIRENUTS provided to make connections
4. Place two BODY halves over HOUSING and fasten with two FLAT HEAD MACHINE SCREWS

### FOR USE WITH CHAIN HUNG FIXTURES (FIGURE 1B)

1. Thread NIPPLE into CAST HOUSING and lock in place with KNURLED NUT and CAP
2. Slip CORD from FIXTURE through NIPPLE and tighten STRAIN RELIEF securely to CORD with pliers (not furnished).
3. Connect GROUND WIRE from FIXTURE to GROUND WIRE in HOUSING. Connect WHITE FIXTURE WIRE to WHITE WIRE in HouSING. Connect BLACK FUXTURE WIRE to BLACK WIRE in HOUSING. Use U.L. listed WIRENUTS Provided to make connections.
4. Place two BODY halves over HOUSING and fasten with two FLAT HEAD MACHINE SCREWS.  
FIXTURE IS NOW READY FOR MOUNTING TO PROGRESS TRAK 1 TRACK (OVER)





**PROGRESS LIGHTING 8727 Alpha Trak Fixture Adapter** [pdf] Instruction Manual  
8727 Alpha Trak Fixture Adapter, 8727, Alpha Trak Fixture Adapter, Trak Fixture Adapter, Fixtur  
e Adapter, Adapter