



ProGLOW PG-BTBOX-1 Custom Dynamics Bluetooth Controller Instruction Manual

[Home](#) » [ProGLOW](#) » ProGLOW PG-BTBOX-1 Custom Dynamics Bluetooth Controller Instruction Manual 

Contents

- [1 Pro GLOW PG-BTBOX-1 Custom Dynamics Bluetooth Controller](#)
- [2 Package Contents:](#)
- [3 Installation:](#)
- [4 Documents / Resources](#)
 - [4.1 References](#)
- [5 Related Posts](#)



Pro GLOW PG-BTBOX-1 Custom Dynamics Bluetooth Controller



We thank you for purchasing the Custom Dynamics® ProGLOW™ Bluetooth Controller. Our products utilize the latest technology and high quality components to ensure you the most reliable service. We offer one of the best warranty programs in the industry and we back our products with excellent customer support, if you have questions before or during installation of this product please call Custom Dynamics® at 1(800) 382-1388.

Package Contents:

- ProGLOW™ Controller (1)
- Power Harness with Switch (1)
- 3M Tape (5)



Fits: Universal, 12VDC systems.

PG-BTBOX-1: ProGLOW™ 5v Bluetooth Controller works with ProGLOW™ Color Changing LED Accent Light Accessories only.

ATTENTION

Please read all Information below before Installation

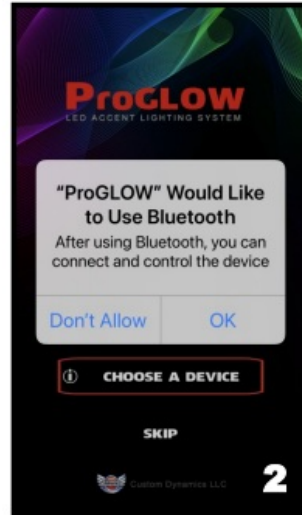
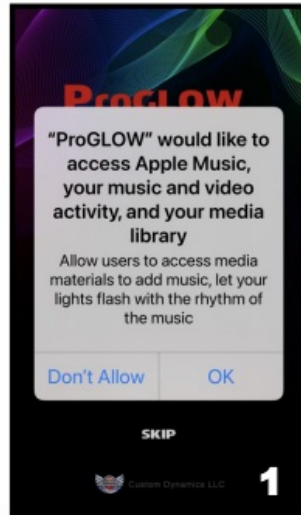
- **Warning:** Disconnect negative battery cable from battery; refer to owner's manual. Failure to do so may result in electrical shock, injury, or fire. Secure negative battery cable away from positive side of battery and all other positive voltage sources on vehicle.

Safety First: Always wear appropriate safety gear including safety glasses when performing any electrical work. It is highly recommended that safety glasses be worn throughout this installation process. Be sure vehicle is on level surface, secure and cool.

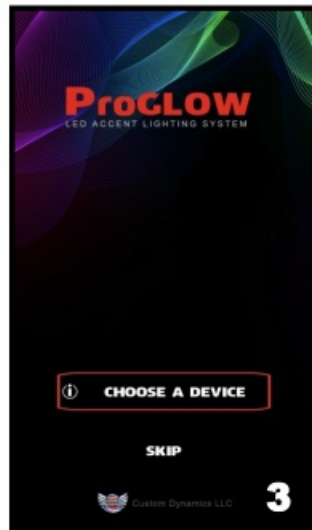
- **Important:** Controller should only be used with Custom Dynamics® Pro GLOW™ LED accent lights. This device and the LEDs used with it are not compatible with other manufacture's products.
- **Important:** This unit is rated for a 3 amp load. Never use a fuse greater than 3 amps in the in-line fuse holder, using a larger fuse or bypassing the fuse will void warranty.
- **Important:** Maximum LEDs per channel is 150 in series connection, not to exceed 3 amps.
- **Note:** Controller App is Compatible with iPhone 5 (IOS10.0) and newer equipped with Bluetooth 4.0 and with Android Phones Versions 4.2 and newer with Bluetooth 4.0. Apps available for download from the following sources:
 - Google Play: <https://play.google.com/store/apps>
 - iTunes: <https://itunes.apple.com/>
 - **Keyword Search:** ProGLOW™
- **Important:** Controller should be secured after installation in an area away from heat, water, and any moving parts. We recommend the use of tie wraps (sold separately) to secure wires from becoming cut, frayed, or pinched. Custom Dynamics® is not liable for damage as a result of improperly securing or failing to secure the controller.

Installation:

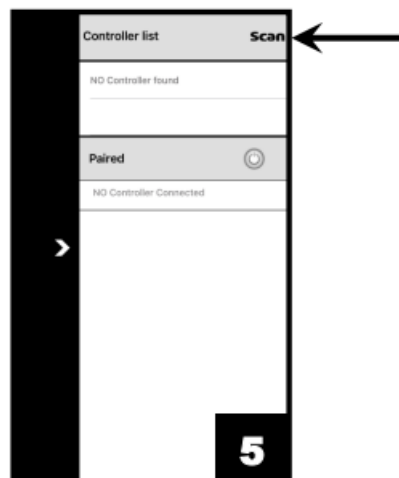
1. Connect the Red battery terminal of the Bluetooth Controller Power Harness and the Blue Battery Monitor wire from the controller to the Positive terminal of the battery. Connect the Black battery terminal of the Bluetooth Controller Power Harness to the Negative battery terminal.
2. Check the switch on the Power Harness to confirm it is not illuminated. If the switch on the Power Harness is illuminated, press the switch button so the switch is not illuminated.
3. Plug the power harness into the Pro GLOW™ Bluetooth Controller power port.
4. (Optional Step) Connect the Black Brake Monitor wire on the Bluetooth Controller to the vehicle brake circuit for Brake Alert feature. Connection must be made before any type of brake light flasher module. If not used, cap wire to prevent shorting. (Lights will change to Solid Red when brake is engaged, then return to normal program function when released.)
5. Refer to the diagram on Page 4 and Connect your Pro GLOW™ LED accessories (Sold Separately) to the controller Channel ports
1- 3.
6. Mount the ON/OFF switch on the Power Harness in a discrete accessible location using the provided 3M tape. Clean the mounting area and switch with denatured alcohol and allow to dry before applying the 3M tape.
7. Use the provided 3M tape to secure the Pro GLOW™ Bluetooth Controller in an area away from heat, water, and any moving parts. Clean the mounting area and controller with denatured alcohol and allow to dry before applying the 3m Tape.
8. Press the switch on the Power Harness, the LED Accessories should now be illuminated and color cycling.
9. Download the Pro GLOW™ Bluetooth App from either the Google Play Store or the iPhone App Store depending on your smart phone device.
10. Open the Pro GLOW™ app. When opening the app for the first time you will need to allow access to your phone. Select "OK" to allow access to your Media and Bluetooth. Refer to Photos 1 and 2.



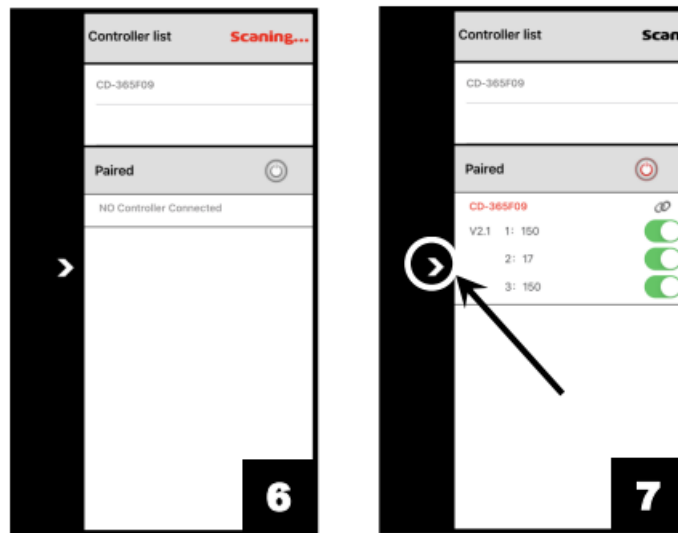
11. Next you will select "CHOOSE A DEVICE" as shown in Photo 3.
12. Then select " Pro GLOW LEDs™" button as shown in Photo 4.



13. Pair the controller with the phone by tapping the "Scan" button in the upper right corner. Refer to Photo 5.



14. When the App has found the controller, the controller will appear in the Controller List. Refer to Photo 6.
15. Tap the controller listed in the Controller List and the controller will pair with the phone. Once paired with the controller, tap the arrow on left side of the screen Refer to Photo 7.



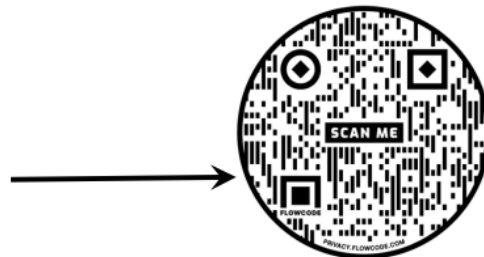
16. You should now be on the main control screen and ready to use your Pro GLOW™ Accent Lights as shown in Photo 8.



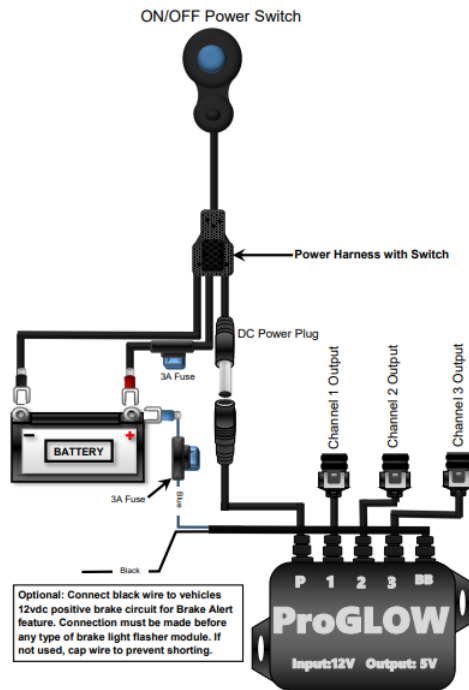
Note: To pair the controller to a new phone, disconnect the Blue battery monitor wire from the battery. Touch the Blue battery monitor wire On/Off to the positive battery terminal 5 times. When the LED accessories start flashing and color cycling, the controller is ready to be paired to a new phone.

Note: For more information on App functions and features please visits

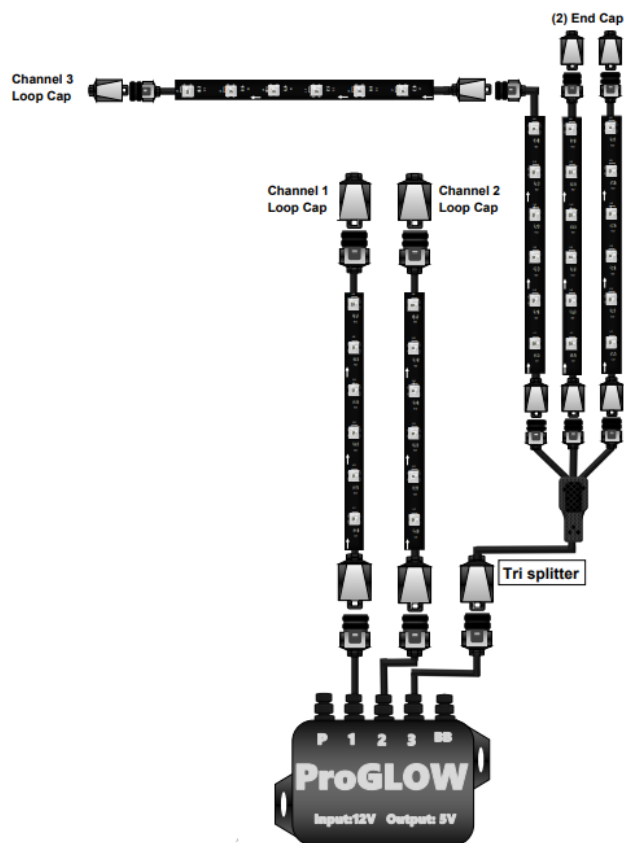
<https://www.customdynamics.com/proglow-color-change-light-controller> or scan the code.



Pro GLOW™ Power Harness Connections



ProGLOW™ Accessory Connections

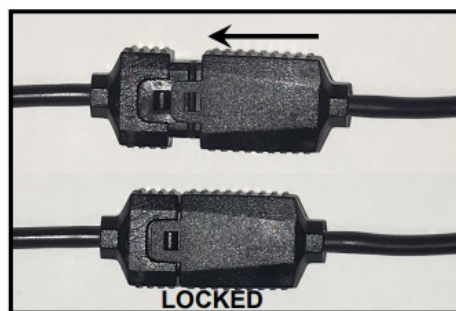


Notes:

1. Pro GLOW™ accessories such as LED Strips, Wire Splitters, Wire Extensions, Loop Caps, End Caps, Headlamps, Passing Lamps, and Wheel Lights sold separately
2. When installing LED strips, Install the LED strip with the arrows pointing towards the front of the vehicle.




3. Install a Loop Cap on the end of the Channel run. Loop Caps are built into Headlamp, and Wheel Light accessories and do not require a separate Loop Cap.
4. If using splitters to create branches in your Channel run, install the Loop Cap on the longest branch. Install End Caps on all of the shorter branches. Refer to Channel 3 in diagram.
Note: Look inside the cap to identify if it's a Loop Cap or End Cap. Loop Caps will have pins inside, End Caps will be empty with no pins.
5. Use caution when connecting the mating Pro GLOW™ accessory connectors, confirm the mating connector is connected correctly or damage will occur to the lighting accessories. The locking tab should slide on-to the lock and lock into position. See Photos below.



Questions?

- **Call us at:** 1 (800) 382-1388
- **M-TH** 8:30AM-5:30PM
- **FR** 9:30AM-5:30PM EST

Documents / Resources

	<p>ProGLOW PG-BTBOX-1 Custom Dynamics Bluetooth Controller [pdf] Instruction Manual PG-BTBOX-1 Custom Dynamics Bluetooth Controller, PG-BTBOX-1, Custom Dynamics Bluetooth Controller, ProGLOW Bluetooth Controller, Bluetooth Controller, Controller</p>
---	--

References

-  [iTunes - Apple](#)
-  [Custom Dynamics Motorcycle LED Lights](#)