



ProFPS PS5 Smart Trigger Installation Guide

[Home](#) » [ProFPS](#) » ProFPS PS5 Smart Trigger Installation Guide 

Contents

- [1 ProFPS PS5 Smart Trigger](#)
- [2 Smart Trigger Installation for PS5](#)
- [3 Trigger Mounting Parts](#)
- [4 Installing Smart Triggers \(1/4\)](#)
- [5 Installation Complete](#)
- [6 Documents / Resources](#)
 - [6.1 References](#)

ProFPS

ProFPS PS5 Smart Trigger



Product Specifications

- Compatible with: PS5 controllers (BDM-030 and BDM-040 versions)

- Tools Required: Phillips PH00 screwdriver, small pocket knife or razor blade, plastic pry tool (recommended), pin or paperclip, needle-nose pliers, tweezers

Product Usage Instructions

Opening the Controller

1. Use the Phillips PH00 screwdriver to open the controller by removing the screws.
2. Remove the battery by unplugging it from the circuit board.
3. Unplug the microphone and all ribbon cables from the main circuit board using needle-nose pliers if needed.

Smart Trigger Installation for PS5

This guide covers the installation of our smart trigger mods.

For installation, you will need a few tools. A Phillips PH00 size screwdriver is required for opening the controller.

You will also need a small pocket knife, razor blade, or side cutters to remove a small plastic tab from the triggers.

A plastic pry tool is recommended but not necessary.

For BDM-040 controllers, you will also need a small diameter object such as a pin, paperclip, or SIM card removal tool to remove the trigger pin.

A pair of needle-nose pliers and tweezers are very helpful for removing and installing the many ribbon cables inside the controller.

There are currently four versions of Sony controllers available: the BDM-010, BDM-020, BDM-030, and BDM-040. The image to the right shows how to identify them. The mods will work ONLY with BDM-030 and BDM-040 controllers.

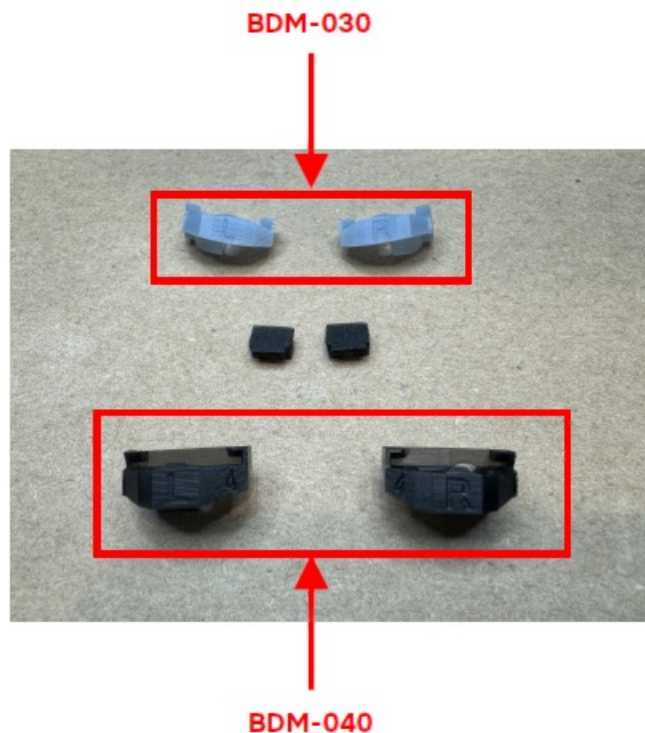


Trigger Mounting Parts

- The kit includes two different sets of mounts. The black mounts are for BDM-040 controllers, and the gray

mounts are for BDM-030 controllers.

- The mounts are labeled with an “L” and “R” for the left and right triggers. Just remember that when the controller is open and flipped upside-down, the triggers will be on opposite sides from normal.
- Additionally, the BDM-040 mounts have a small “4” marked on them.
- The small black parts in the middle are plugs for the triggers and are used for both controller versions.



Opening th Controller (1/3)

- To open the controller, you must first remove the trim piece around the thumb sticks and PS button. Start with the controller upside-down. Use a pry tool (your fingernail can also work just as well) and place it between the shell and the trim to pop it out. Do the same on both sides.
- Flip the controller over and slowly work up both sides of the trim piece, releasing the clips. Once all the clips are released, lift the bottom of the trim piece over the thumb sticks and then out.
- Once removed, flip the controller back over to reveal the two Phillips PH00 screws and remove them.



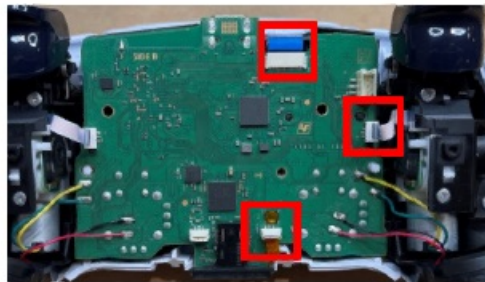
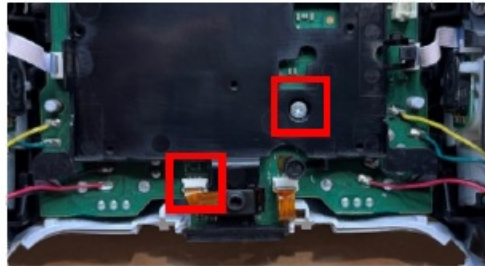
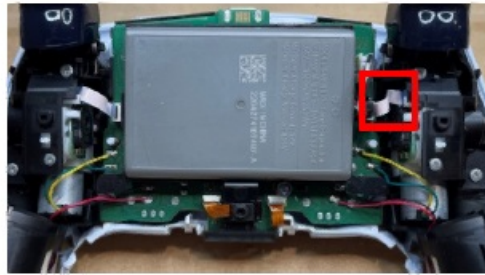
- Next, you will need to remove the R1 and L1 buttons. Using the pry tool, get behind the button as shown in the picture and pop it out. This requires more force than removing the trim piece. If you do not have a pry tool, use the PH00 screwdriver or a pair of tweezers.
- Once removed, you will see the second set of PH00 screws that must be removed.
- The final step to remove the back cover is to separate the shell, starting at the end of one of the grips. While separating, you will need to release the two clips shown in the bottom picture. Separate from the bottom, opening like a clamshell until you feel resistance, then push the shell up and out away from the triggers.



- With the controller open, you can remove the battery by unplugging it from the circuit board.
- This reveals the battery tray, which is held in by one Phillips PH00 screw. Remove this screw. You will also

need to unplug the microphone, which is clipped into the bottom of the tray.

- Next, unplug all the ribbon cables from the main circuit board. Some of these can be stubborn and are best removed by grasping firmly as close to the plug as possible with a pair of needle-nose pliers.

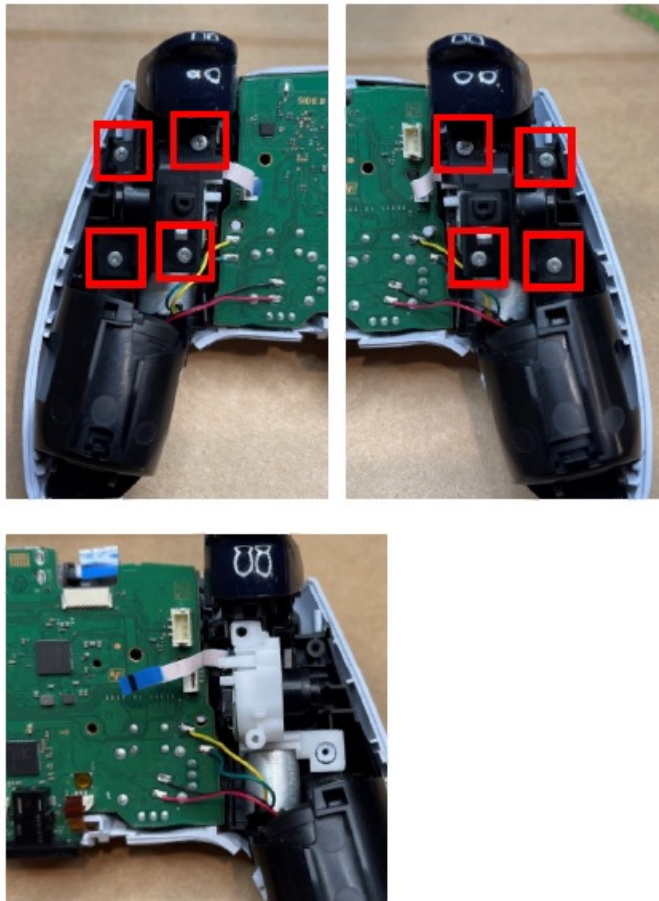


Opening Triggers BDM-030 (1/2)

Continue to page 9 for BDM-040 controllers.

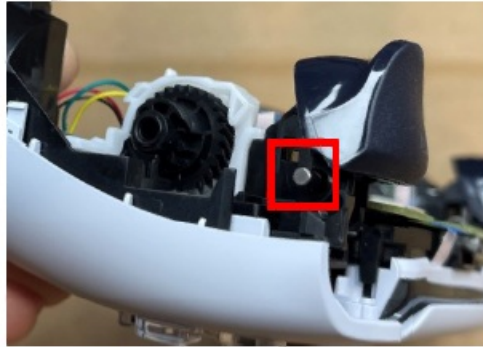
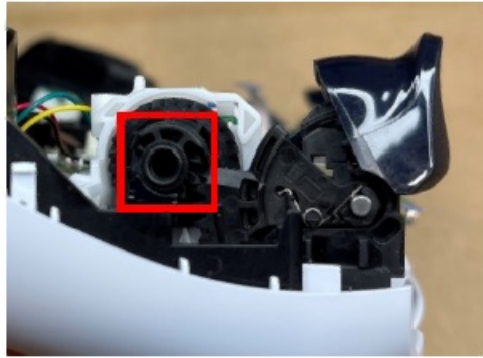
Now you must remove the covers from the trigger modules. These are held on by four screws on each side. The covers also have clips holding them on. Once the screws are removed, you can remove the cover by lifting from the inside lower corner.

The lower picture shows the trigger with the cover removed.



Opening Triggers BDM-030 (2/2)

- With the cover off the trigger, you will need to remove the adaptive trigger actuator arm. This piece will NOT be reinstalled.
- Pay attention to the position of the gear inside the trigger; it needs to stay in the same position (rotated all the way forward toward the trigger).
- Remove the pin holding the trigger by pulling it out, then remove the trigger.
- Remove the rubber pad from the front of the triggers.
- You should now have all the pieces to the right for each trigger.
- Skip to page 11 to continue.



Opening Triggers BDM-040 (1/2)

- To remove the R2 and L2 triggers from the BDM-040 controllers, you must use a small pointed object to push the trigger pin out.
- There is a small hole, only 1mm wide, just in front of the spring. See the close-up image to the right.
- The second picture shows the same hole with a paperclip inserted to push the pin out.



Opening Triggers BDM-040 (2/2)

To remove the R2 and L2 triggers from the BDM-040 controllers, you must use a small pointed object to push the trigger pin out.

There is a small hole, only 1mm wide, just in front of the spring. See the close-up image to the right.

The second picture shows the same hole with a paperclip inserted to push the pin out.

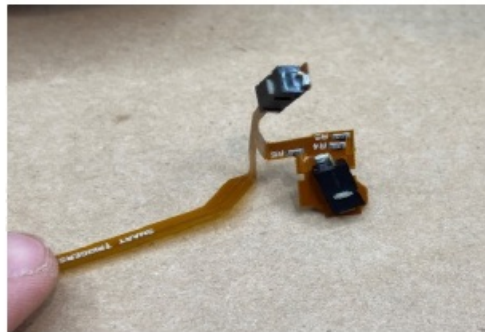


Installing Smart Triggers (1/4)

Now you can begin the installation of the smart trigger mod. First, lift and flip over the circuit board from the controller. Be cautious, as there are still wires attached for the rumble motors.

The controller is shown here with the mod properly in place. Before placing the mod, it will be very helpful to make two 90-degree bends on each side, as shown in the lower pictures. This will allow the mod to easily fit into place and lay flat.

Please note the flex is meant to “flex”; you can bend the mod at these points completely in half and then extend it back out to the proper angle. This helps create a sharp 90-degree corner as shown.

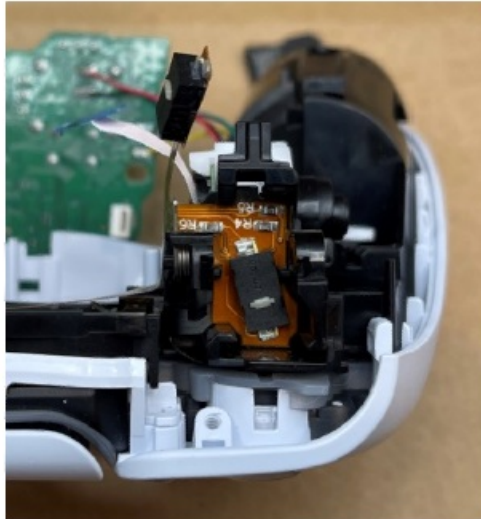


Installing Smart Triggers (2/4)

Install the flex into the space where the rubber pad was originally. This is a tight fit and may take a little work to get into place. Ensure that the mod flex is completely pushed into the space. Using tweezers or a small screwdriver can help.

Before moving further, install the R1 and L1 buttons to make sure they can move and press the button properly. If they do not move, double-check that the flex is fully flat against the housing.

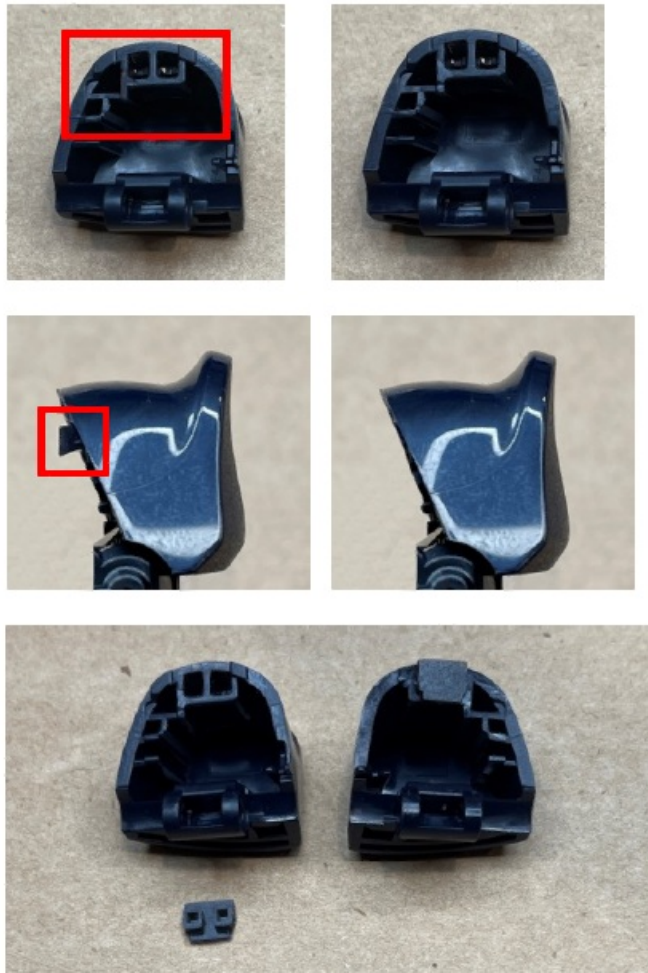
R1 and L1 will have very short travel as the plunger will rest directly on the button. If you would like more travel, you must sand or trim down the round plastic post on the back side of R1/L1.



Installing Smart Triggers (3/4)

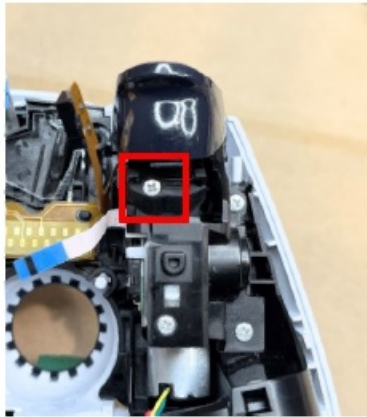
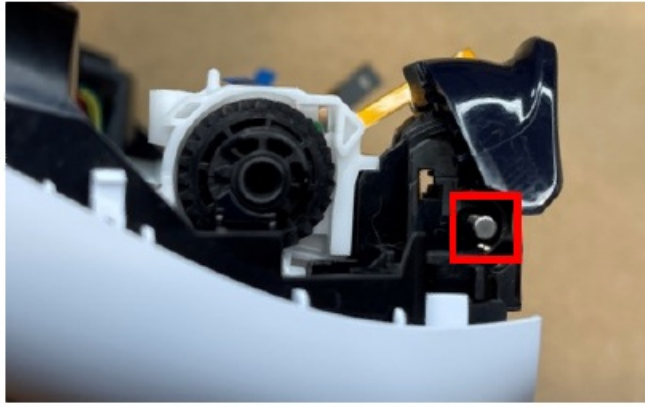
Prepare the triggers – Before reinstalling the triggers, you will need to remove the small tab on the back of the trigger. This can be easily done with a small pocketknife, razor blade, or side cutters.

Next, install the small plugs included with the kit into the back of the triggers. These will fit snugly into the two openings at the top of the trigger. The narrow side must be toward the bottom of the trigger.



Installing Smart Triggers (4/4)

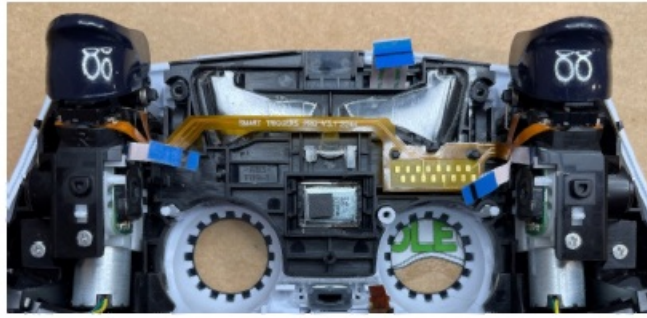
- Reinstall the trigger using the small metal pin removed earlier. Make sure the pin is fully inserted. Test the trigger movement before moving on.
- Ensure the small plug installed on the previous page is still properly in place. Also, make sure the gear for the adaptive trigger has not moved; it should be rotated fully toward the trigger (BDM-030 only).
- DO NOT REINSTALL THE ACTUATOR ARM (BDM-030 only). And replace the plastic cover over the trigger (BDM-030 only).
- Place the included trigger mounts behind the triggers. They are marked with an “R” and “L” for the right and left triggers. (Note: the controller is upside-down, so the left trigger will be on your right.) Install the four screws, one of which will go through the new trigger mount.
- Carefully slide the trigger button into the mount. The button will snap past the small bump at the edge of the mount and sit flat. Test the triggers to ensure they click and move properly. The plug in the trigger will press against the button.



Installation Complete

- The installation of the mod is complete, and you can reassemble the controller.
- Make sure the mod is centered over the two pegs with the controller flex. Then, reinstall the circuit board. Ensure all ribbon cables are connected.
- Reinstall the battery tray and secure it with the single Phillips PH00 screw. Plug in the battery and place it in the tray.
- Place the back cover and reinstall the four Phillips PH00 screws. Press the R1 and L1 bumper buttons back in. Reinstall the black trim over the thumb sticks.
- You should be left with the two actuator arms (BDM-030 only) and the rubber pads from behind the triggers.

YOU ARE DONE!



15 Smart Trigger Installation Guide

Documents / Resources



[ProFPS PS5 Smart Trigger](#) [pdf] Installation Guide
BDM-030, BDM-040, PS5 Smart Trigger, PS5, Smart Trigger, Trigger

References

- [User Manual](#)

[Manuals+](#), [Privacy Policy](#)

This website is an independent publication and is neither affiliated with nor endorsed by any of the trademark owners. The "Bluetooth®" word mark and logos are registered trademarks owned by Bluetooth SIG, Inc. The "Wi-Fi®" word mark and logos are registered trademarks owned by the Wi-Fi Alliance. Any use of these marks on this website does not imply any affiliation with or endorsement.