

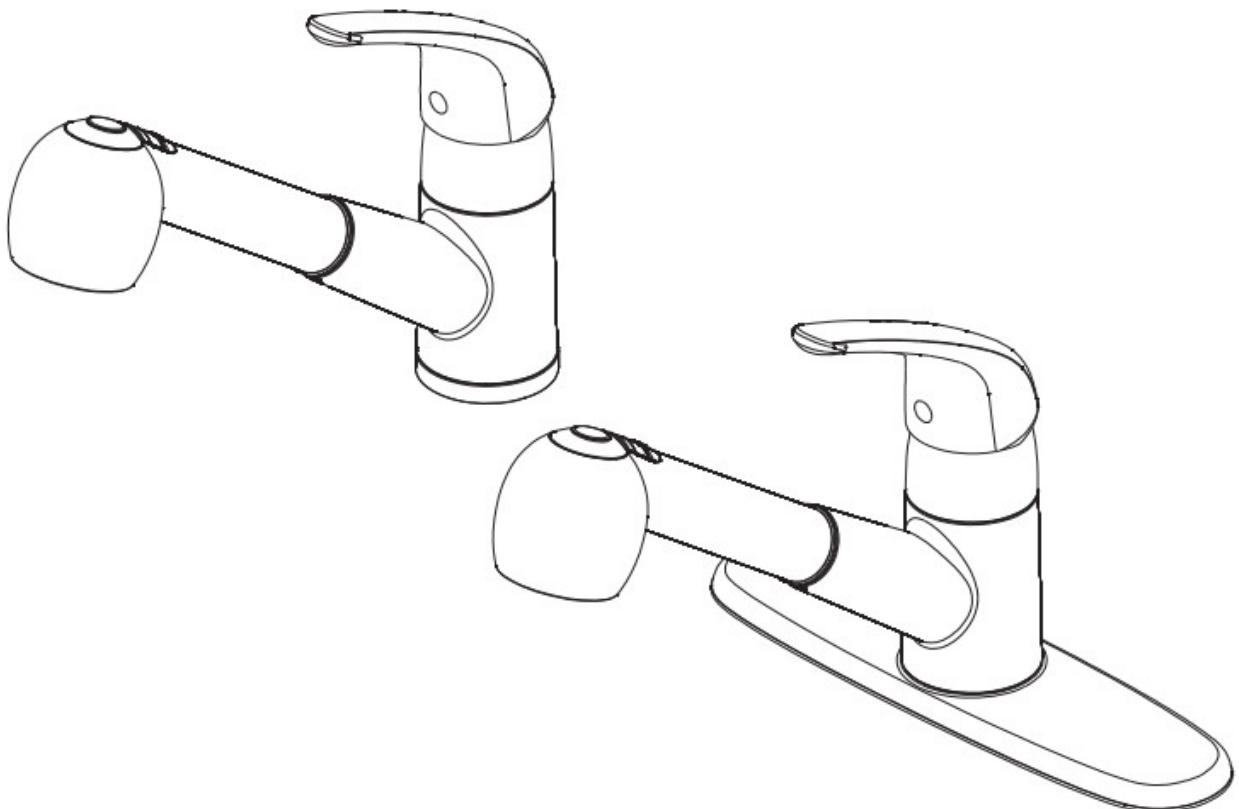


PROFLO Single Handle Installation Guide

[Home](#) » [PROFLO](#) » PROFLO Single Handle Installation Guide 



PFXC5150CP PFXC5150ZBN PFXC5150ORB
SINGLE HANDLE LAVATORY FAUCET
Installation Instructions



CAUTION-TIPS FOR REMOVAL OF OLD FAUCET:

Always turn off the water supply before removing the existing faucet or replacing any part of the faucet. Open the faucet handle to relieve water pressure and ensure that water is completely shut off.

CARE INSTRUCTIONS:

To preserve the finish of your faucet, apply non-abrasive wax. Any cleaners should be rinsed off immediately. Do not use abrasive cleaners on the faucet.

You may need

Goggles



Wrench



(2) Supply Lines



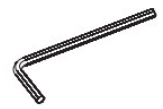
Basin Wrench



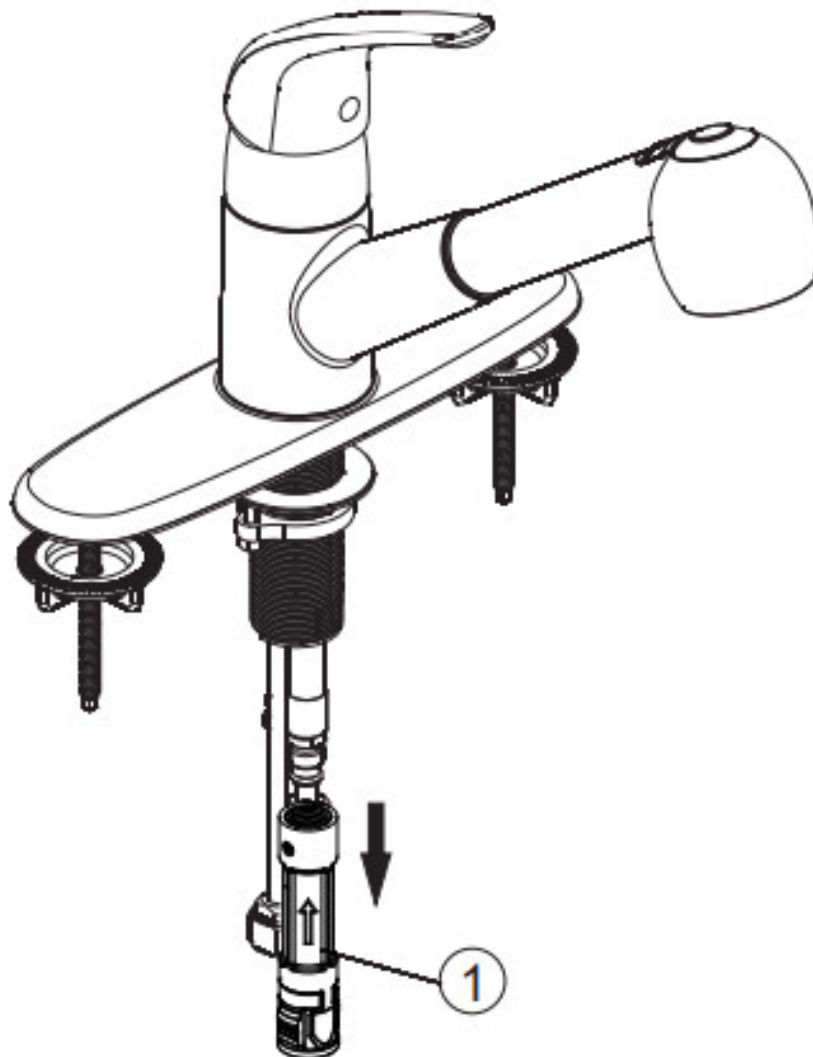
Sealant Tape



Silicone



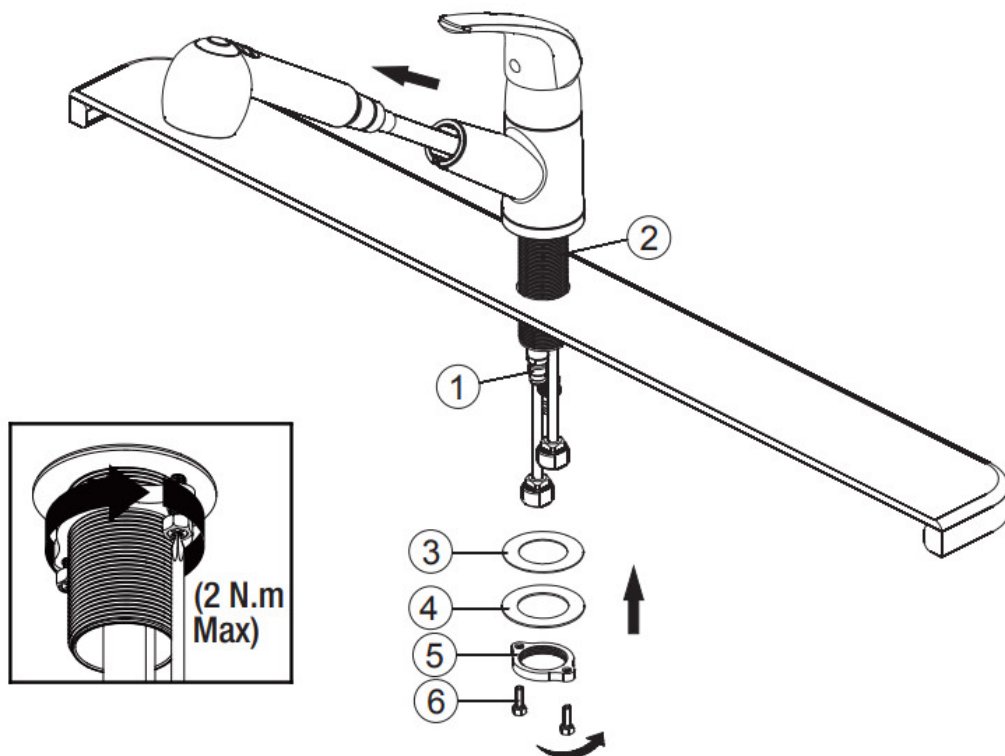
2.5mm Hex Allen Wrench



Shut off water supplies.

Before installation, remove the quick connector (1) from the free end of the hose by unscrewing it in a counter-clockwise direction. If installing the faucet without the escutcheon begins with step 2. If installing the faucet with the escutcheon, begin with step 3A.

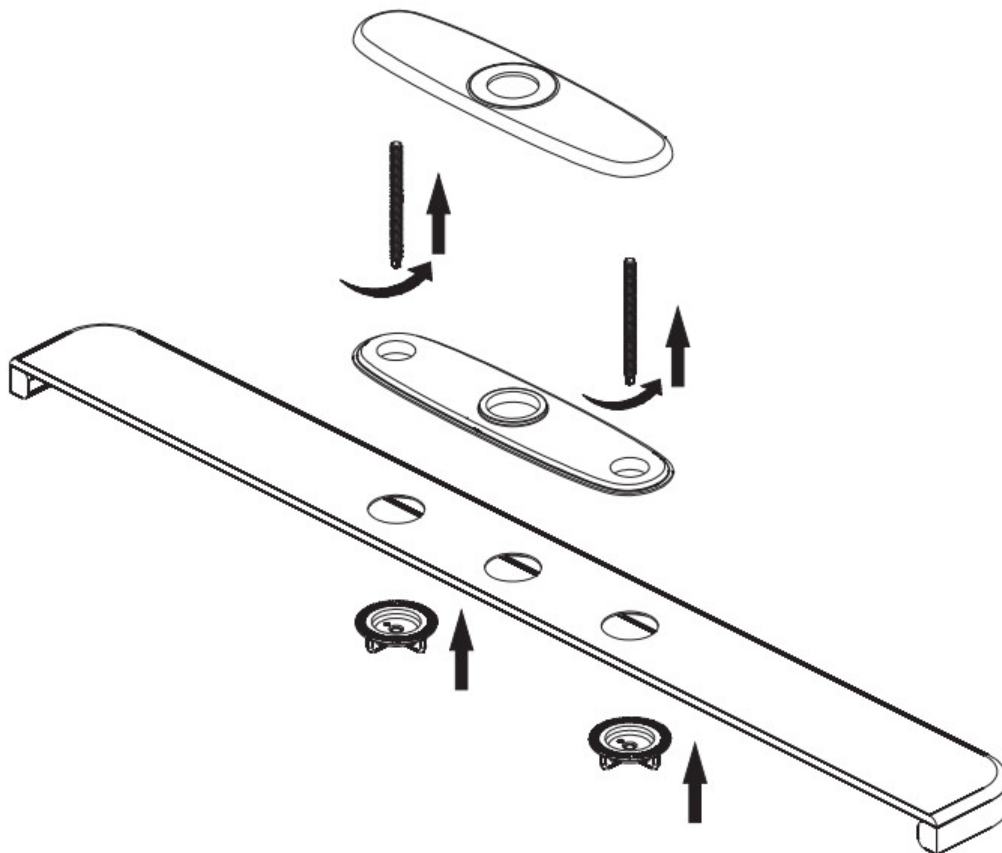
Note: If the sink surface is uneven or irregular, the plumber's putty or a silicone sealant may be used to create a watertight seal. Plumber's putty may have an adverse reaction with plastic gaskets under the spout base so if your faucet has a plastic gasket, use a high-quality silicone sealant. Plumber's putty also may have an adverse reaction with some cultured marble or natural stone. In these cases, a high-quality silicone sealant is recommended.



Retract hose (1) up through the faucet body until the hose fitting is flush with the bottom of the shank (2). Do not pull hose fitting past the shank. Insert the faucet body through the hole in the sink.

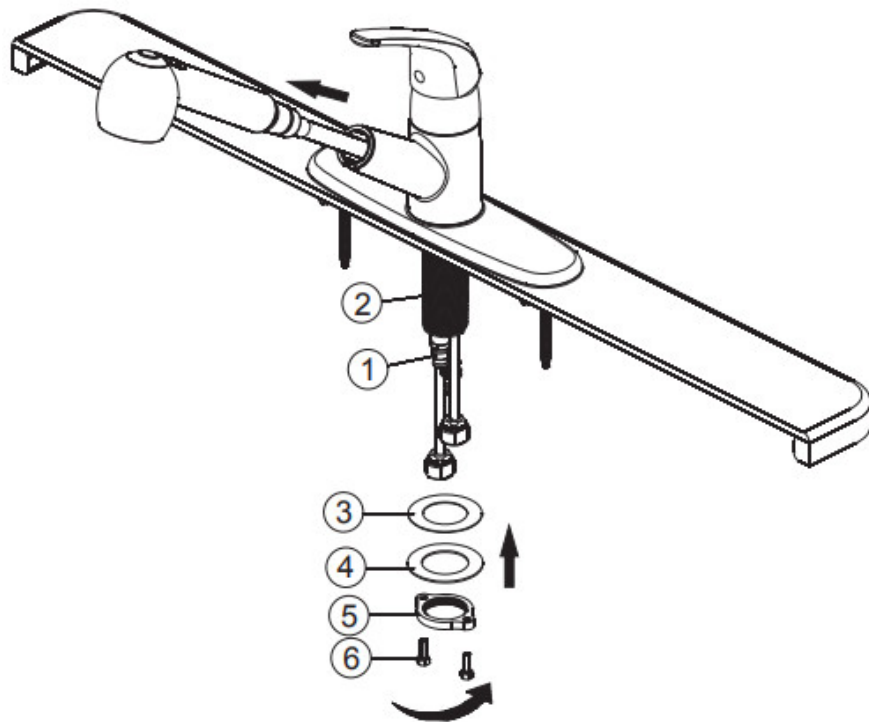
Note: Do not feed the hose (1) back down through the spout until step 4. Install rubber washers (3) and metal washers (4) onto the threaded mounting shank.

Thread nut (5) onto mounting shank. Locknut into position by tightening screws (6). Do not overtighten. Please continue to Step 4.

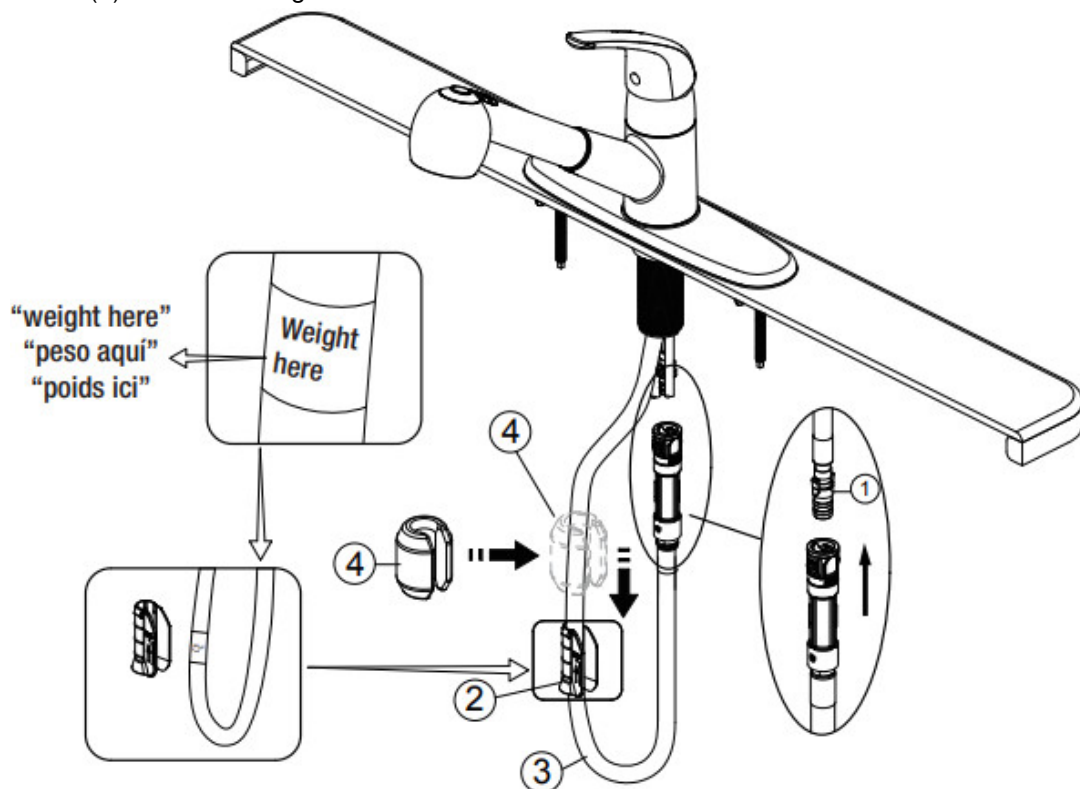


Optional Escutcheon Installation.

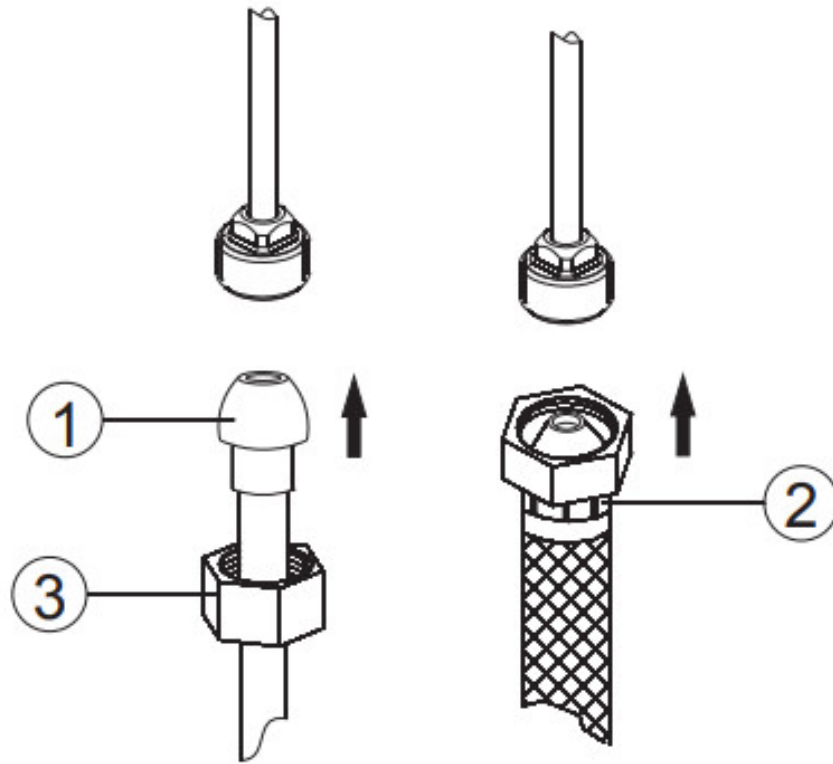
Before installation, screw bolts to the 3 hole escutcheon. Install escutcheon over the three holes in the sink. From underneath sink, hand tightens mounting nut. Do not overtighten. Retract hose (1) up through the faucet body until the pull-down hose fitting is flush with the bottom of the shank (2). Do not pull hose fitting past the shank. Insert faucet body through the hole in the escutcheon.



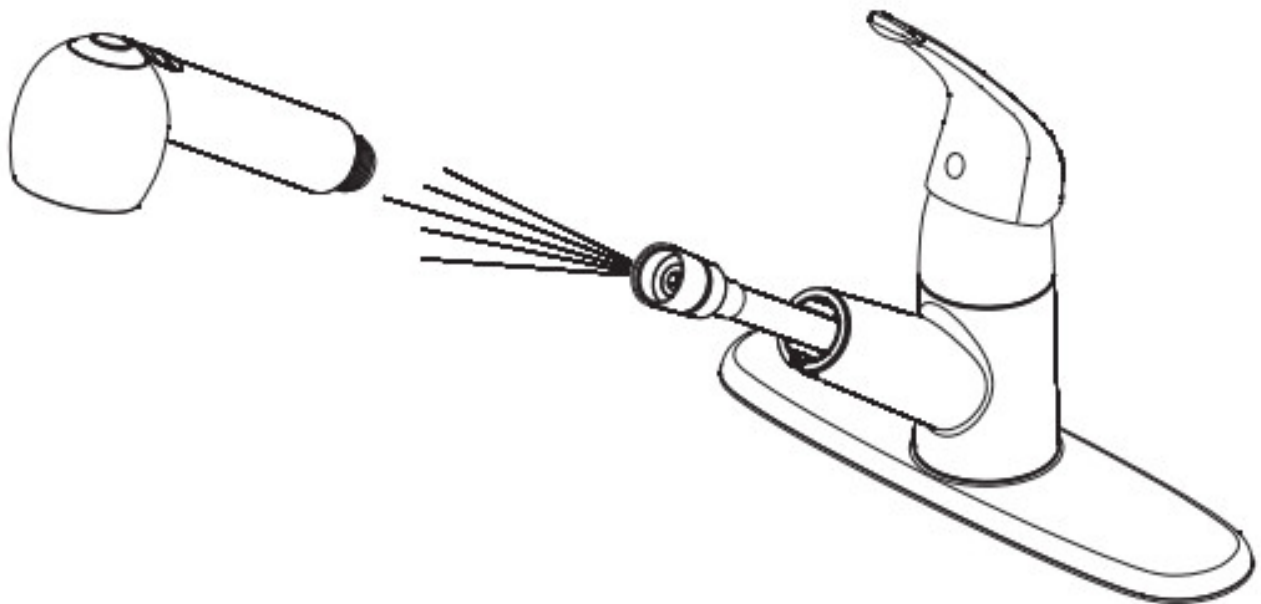
Note: Do not feed the hose (1) back down through the spout until step 4. Install rubber washers (3) and metal washers (4) onto the threaded mounting shank. Thread nut (5) onto mounting shank. Lock nut into position by tightening screws (6). Do not overtighten.



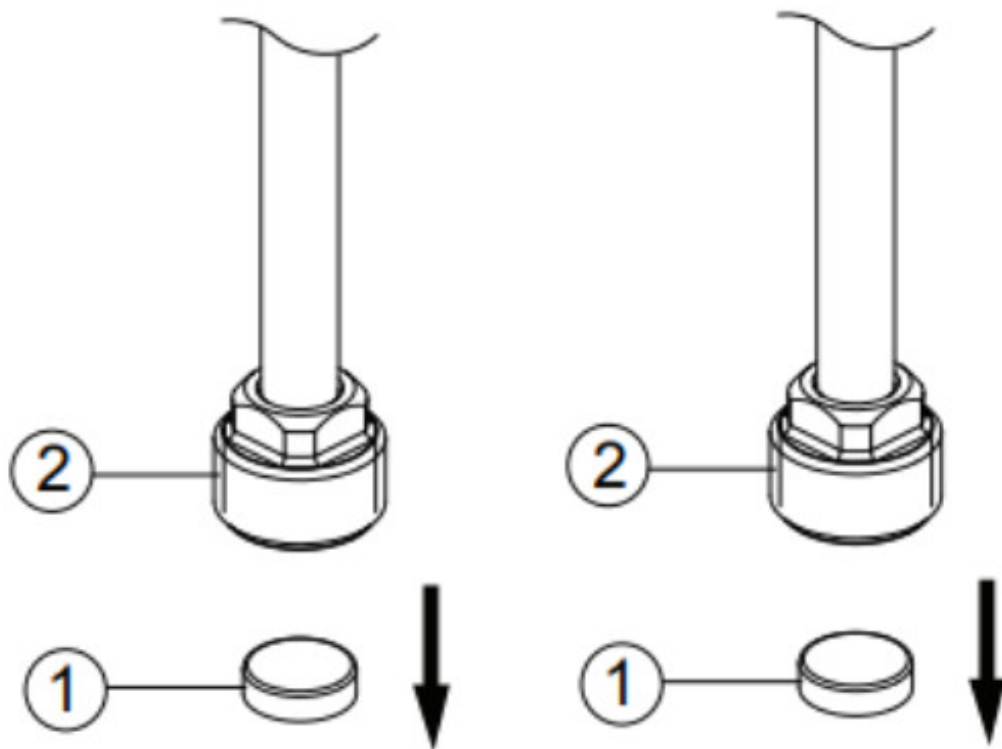
Screw quick connector to the free end of the hose. Align block (1) and tabs on quick connect. Push quick connect housing firmly upward and snap onto receiving block. Pull down moderately to ensure the connection has been made. If it is necessary to remove quick connect, squeeze tabs on the hose between index finger and thumb, then pull down to disconnect. Install the weight clip (2) at the point of the hose (3) marking "weight here". Insert the weight (4) onto the clip (2) by sliding it down onto the clip (2).



Make connections to water lines. Use 1/2" I. P. S. faucet connections (2) or use supply line coupling nuts (3) with 3/8" O. D. ball-nose riser (1). Use wrenches to tighten connections. Do not overtighten.



After installation is complete, remove the sprayer by unscrewing it in a counterclockwise direction. Turn on the water supply to flush debris from the faucet. Run the hot and cold water for at least one minute each. Important: This flushes away any debris that could cause damage to internal parts.v



NOTE: Due to copper tube design, aeration/filtration has been added to the supply lines. If the flow becomes restricted or pressure reduced, please proceed as follows: Shut off the water supply at the angle stop and unscrew the hose from water supply lines. Remove screen filter (1) from hose (2) and clean/rinse off any debris. Reinstall (1) into (2) in the original direction, reconnect supply lines, and turn the water on.

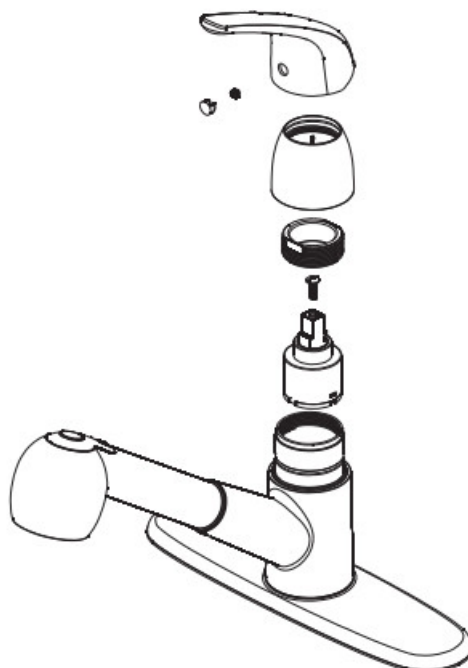
Contents

[1 Maintenance:](#)

[2 Documents /
Resources](#)

[2.1 References](#)

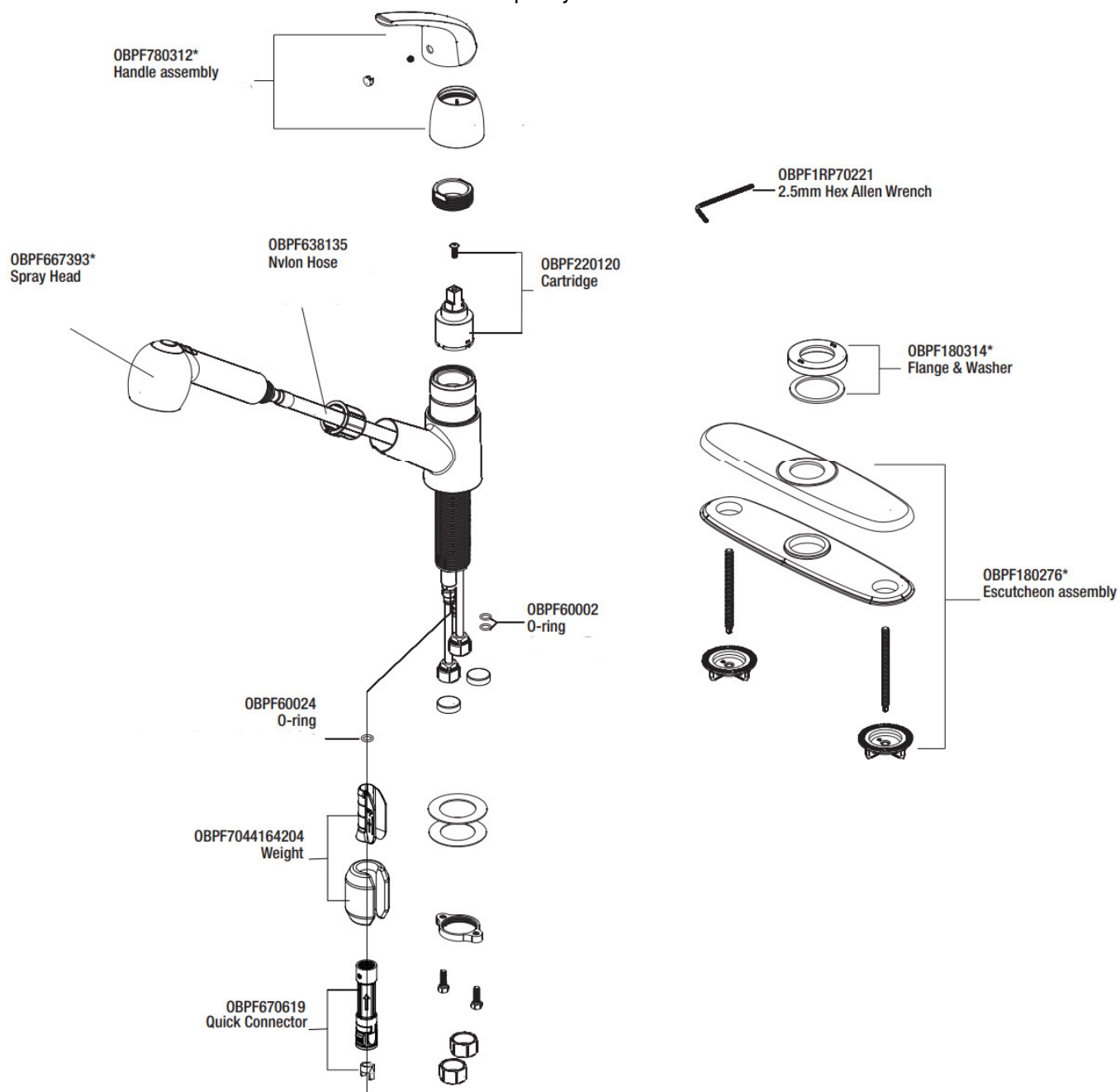
[3 Related Posts](#)



Maintenance:

If the faucet leaks underneath the handle or water do not completely shut off: replace the cartridge.

* Specify Finish



06/17/21 REV.D

www.PROFLO.com

Distributed Exclusively by Ferguson and Wolseley Canada

© 2018 Ferguson Enterprises, Inc. 0423 252402

Documents / Resources



[PROFLO Single Handle](#) [pdf] Installation Guide
SINGLE HANDLE, PFXC5150CP, PFXC5150ZBN, PFXC5150ORB

References

- [PROFLO® - Ferguson](#)

Manuals+.