



PROEL Session 1 Compact Portable Column System User Manual

[Home](#) » [Proel](#) » PROEL Session 1 Compact Portable Column System User Manual 






Contents

- 1 IMPORTANT SAFETY INSTRUCTIONS
- 2 FEDERAL COMMUNICATIONS COMMISSION (FCC) STATEMENT
- 3 DECLARATION OF CONFORMITY
- 4 LIMITED WARRANTY
- 5 CONDITIONS OF USE
- 6 INTRODUCTION
- 7 DESCRIPTION
- 8 MAIN PANEL OPERATIONS
- 9 INSTALLATION
- 10 TECHNICAL SPECIFICATIONS
- 11 MAIN PANEL
- 12 Documents / Resources
 - 12.1 References
- 13 Related Posts

IMPORTANT SAFETY INSTRUCTIONS

Watch for these symbols:

-  The lightning flash with the arrowhead symbol within an equilateral triangle is intended to alert the user to the presence of uninsulated “dangerous voltage” within the product’s enclosure, which may be of sufficient magnitude to constitute a risk of electric shock to persons.
- The exclamation point within an equilateral triangle is intended to alert the user to the presence of important operating and maintenance (servicing) instructions in the literature accompanying the appliance.



1. Read these instructions.
2. Keep these instructions.
3. Heed all warnings.
4. Follow all instructions.
5. Do not use this apparatus near water.
6. Clean only with a dry cloth.
7. Do not block any ventilation openings. Install in accordance with the manufacturer’s instructions.
8. Do not install near any heat sources such as radiators, heat registers, stoves, or other apparatus (including amplifiers) that produce heat.
9. Do not defeat the safety purpose of the polarized or grounding-type plug. A polarized plug has two blades one wider than the other. A grounding-type plug has two blades and a third grounding prong. The wide blade or the third prong is provided for your safety. If the provided plug does not fit into your outlet, consult an electrician for the replacement of the obsolete outlet.
10. Protect the power cord from being walked on or pinched, particularly at plugs, convenience receptacles, and the point where they exit from the apparatus.
11. Only use attachments/accessories specified by the manufacturer.



12. Use only with the cart, stand, tripod, bracket, or table specified by the manufacturer, or sold with the apparatus. When a cart is used, use caution when moving the cart/apparatus combination to avoid injury from tip-over.
13. Unplug this apparatus during lightning storms or when unused for long periods of time.
14. Refer all servicing to qualified service personnel. Servicing is required when the apparatus has been damaged in any way, such as a power supply cord or plug is damaged, liquid has been spilled or objects have fallen into the apparatus, the apparatus has been exposed to rain or moisture, does not operate normally, or has been dropped.
15. Warning: to reduce the risk of fire or electric shock, do not expose this apparatus to rain or moisture.
16. Do not expose this equipment to dripping or splashing and ensure that no objects filled with liquids, such as vases, are placed on the equipment.
17. To completely disconnect this apparatus from the ac mains, disconnect the power supply cord plug from the ac receptacle.
18. The mains plug of the power supply cord shall remain readily operable.
19. This apparatus contains potentially lethal voltages. To prevent electric shock or hazard, do not remove the chassis, input module, or ac input covers. No user-serviceable parts inside. Refer servicing to qualified service personnel.
20. The loudspeakers covered by this manual are not intended for high moisture outdoor environments. Moisture can damage the speaker cone and surround and cause corrosion of electrical contacts and metal parts. Avoid exposing the speakers to direct moisture.
21. Keep loudspeakers out of extended or intense direct sunlight. The driver suspension will prematurely dry out and finished surfaces may be degraded by long-term exposure to intense ultraviolet (UV) light.
22. The loudspeakers can generate considerable energy. When placed on a slippery surface such as polished wood or linoleum, the speaker may move due to its acoustical energy output.
23. Precautions should be taken to assure that the speaker does not fall off a stage or table on which it is placed.
24. The loudspeakers are easily capable of generating sound pressure levels (SPL) sufficient to cause permanent hearing damage to performers, production crew, and audience members. Caution should be taken to avoid prolonged exposure to SPL in excess of 90 dB.



CAUTION
RISK OF ELECTRIC SHOCK! DO NOT OPEN IT!



CAUTION



To prevent electric shock hazards, do not connect to the main power supply while the grille is removed.



This marking shown on the product or its literature indicates that it should not be disposed of with other household wastes at the end of its working life. To prevent possible harm to the environment or human health from uncontrolled waste disposal, please separate this from other types of waste and recycle it responsibly to promote the sustainable reuse of material resources. Household users should contact either the retailer where they

purchased this product, or their local government office, for details of where and how they can take this item for environmentally safe recycling. Business users should contact their suppliers and check the terms and conditions of the purchase contract. This product should not be mixed with other commercial wastes for disposal.

FEDERAL COMMUNICATIONS COMMISSION (FCC) STATEMENT

This equipment has been tested and found to comply with the limits for a Class A digital device, pursuant to part 15 of the FCC Rules.

These limits are designed to provide reasonable protection against harmful interference when the equipment is operated in a commercial environment. This equipment generates, uses, and can radiate radio frequency energy and, if not installed and used in accordance with the instruction manual, may cause harmful interference to radio communications.

Operation of this equipment in a residential area is likely to cause harmful interference in which case the user will be required to correct the interference at their own expense.

This device complies with Part 15 of the FCC rules. Operation is subject to the following two conditions:

1. this device may not cause harmful interference, and
2. this device must accept any interference received, including interference that may cause undesired operation.

DECLARATION OF CONFORMITY

The product is in compliance with the following European Directives:

EMC 2014/30/EU, RED 2014/53/EU, LVD 2014/35/EU, RoHS 2011/65/EU, and WEEE 2012/19/EU.

WARNING (EN 55032 CISPR 32)

This equipment is compliant with Class A of CISPR 32. In a residential environment, this equipment may cause radio interference.

Under the EM disturbance, the ratio of signal-noise will be changed above 10 dB.

LIMITED WARRANTY

Proel warrants all materials, workmanship, and proper operation of this product for a period of two years from the original date of purchase. If any defects are found in the materials or workmanship or if the product fails to function properly during the applicable warranty period, the owner should inform these defects dealer or the distributor, providing a receipt or invoice of the date of purchase and defect detailed description. This warranty does not extend to damage resulting from improper installation, misuse, neglect, or abuse. Proel S.p.A. will verify damage on returned units, and when the unit has been properly used and the warranty is still valid, then the unit will be replaced or repaired. Proel S.p.A. is not responsible for any "direct damage" or "indirect damage" caused by product defectiveness.

- This unit package has been submitted to ISTA 1A integrity tests. We suggest you control the unit conditions immediately after unpacking it.
- If any damage is found, immediately advise the dealer. Keep all unit packaging parts to allow inspection.
- Proel is not responsible for any damage that occurs during shipment.
- Products are sold "delivered ex-warehouse" and shipment is at charge and risk to the buyer.
- Possible damages to the unit should be immediately notified to the forwarder. Each complaint for package tampered with should be done within eight days from product receipt.

CONDITIONS OF USE

Proel does not accept any liability for damage caused to third parties due to improper installation, use of non-original spare parts, lack of maintenance, tampering, or improper use of this product, including disregard of

acceptable and applicable safety standards. Proel strongly recommends that this loudspeaker cabinet be suspended taking into consideration all current National, Federal, State, and Local regulations. The product must be installed by qualified personnel. Please contact the manufacturer for further information.

INTRODUCTION

Thank you for choosing a PROEL product. Please take some time to read this manual to understand all the features of your system and take advantage of all its performance capabilities. All PROEL products are CE approved and designed for continuous use in professional applications.

DESCRIPTION

SESSION1 is a portable column system featuring multiple inputs and a versatile MP3 player with BLUETOOTH connectivity. Hosted in lightweight yet ultra-durable polypropylene cabinets, it is composed of a column with four high-definition 2.5" full-range speakers and a powerful 8" sub-woofer. The state-of-the-art electronics include a sophisticated pre-amp section with active filtering and dual CLIP LIMITERS, and a powerful 2-channel 400W Class D power amplifier.

The built-in MEDIA PLAYER is able to play songs from an SD card or a USB MEMORY STICK, but also from your smartphone or your tablet thru a BLUETOOTH connection, without the need of any cable. The built-in 3channel mixer allows connecting two microphone or line sources and a stereo player, each one with independent level controls. A digital EFFECT is also available for microphone inputs. With a simple knob is possible to optimize the sound for speech, music, or low boost applications, adapting the system to any situation.

SESSION1 can be used in a variety of applications, ranging from speech diffusion and music playback to live music and DJ sets.

MAIN PANEL OPERATIONS

1. CH1 / CH2 XLR input

This is a female XLR connector that accepts an XLR plug from any balanced or unbalanced dynamic microphone or line-level device. The XLR input is wired as follows:

Pin 1 = shield or ground

Pin 2 = + positive or "hot"

Pin 3 = – negative or "cold"

2. CH1 / CH2 JACK input

This is a female JACK connector that accepts a JACK plug from any dynamic balanced or unbalanced microphone or line-level device. The balanced JACK input is wired as follows:

Tip = + positive or "hot"

Ring = – negative or "cold"

Sleeve = shield or ground

The unbalanced JACK input is wired as follows:

Tip = + positive or "hot"

Sleeve = shield or ground

3. CH1 / CH2 LINE/MIC SWITCH

This switch sets the sensitivity of the channel input between the microphone level and line level.

4. CH1 / CH2 LEVEL

These potentiometers set the level of CH1 / CH2 channels.

5. CH1 / CH2 EFFECT

These potentiometers set the level of the CH1 / CH2 channel delay effect.

6. LINE OUT (XLR)

This male XLR connector provides a balanced line-level signal with the mix of the inputs picked up before the MASTER controls. Connect it to the input of another audio system or powered speaker.

7. CH3 LINE IN (MINI JACK)

This is a MINI JACK (3.5mm) female connector that accepts a STEREO MINI JACK plug from Computer/CD / DVD / MP3 player. The MINI JACK is wired as follows:

Tip = positive signal of the left channel

Ring = positive signal of right channel

Sleeve = shield or ground

8. CH3 LINE/MP3 SWITCH

Use this switch to select the external player connected to the MINI JACK connector or the built-in Media Player as the source for the input channel 3.

9. CH3 LEVEL

This potentiometer sets the level of the respective CH3 LINE input or the built-in Media Player.

10. SUB LEVEL for SPEECH – MUSIC – BOOST

This potentiometer sets the full system equalization: if rotated counter-clockwise it enhances the speech, the center is the best position for music reproduction, and rotated full clockwise it enhances the lows.

11. SIGNAL / LIMIT

GREEN LED illuminates when a signal is sent to the amplifier.

RED LED illuminates when the internal amplifier's output is limited. When this LED flashes, reduce the signal level.

12. MASTER

This potentiometer sets the general level of all signals sent to the internal speaker amplifier.

13. USB SLOT

This slot is where you can insert a USB FLASH DRIVE containing audio files.

✓ Preferably use only reliable memories (suggested brands are: **SanDisk, Kingston, Lexar, and Verbatim**).

14. SD SLOT

This slot is where you can insert an SD MEMORY CARD containing audio files.

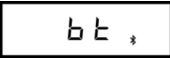


15. MODE SWITCH

Pressing this switch, you can select the source containing audio files between SD, USB, or external



Bluetooth player device. A small icon on the display identifies the source currently used:

✓ **To connect a Bluetooth device**, follow these instructions:

- Press MODE one or two times until the  text appears.
- If the Bluetooth symbol  in the display is steady on, your device is associated and linked to the loudspeaker (a previously associated device will be relinked automatically).
- If the Bluetooth symbol  in the display is flashing, there is no device associated.
- To associate a new device (smartphone, tablet, pc, or other) you must turn on the Bluetooth in your device.

- On the device, in the list of Bluetooth devices, a new device named "SESSION1" will appear and a tone will be reproduced by the loudspeaker,
- To associate it to your device choose it and if the linking is successful another tone will be reproduced by the loudspeaker.
- Now you will see "SESSION1" in the list of your recognized Bluetooth devices on your smartphone or tablet and you are ready to play music with it using your preferred app.


NOTE: the audio file types and quality playable with a Bluetooth connection depend on the Bluetooth device used. The Bluetooth connection range is about 10 m (33 feet).


✓ **How to link two loudspeakers with STEREO LINK:** the STEREO LINK function allows you to play stereo tracks on two SESSION1 loudspeakers linked together. The MASTER loudspeaker will reproduce the left channel and the SLAVE loudspeaker will reproduce the right channel.

- The MASTER loudspeaker must be already linked with your Bluetooth device with the procedure described above.

- Turn on the SLAVE loudspeaker and press its MODE button until the display shows: 

- Then press the STEREO LINK button on the SLAVE loudspeaker and the display will show: 

- Wait a few moments (5 to 10 seconds) until the Bluetooth symbol  on the display is steady, meaning that the connection is established between the SLAVE and the MASTER. A double note reproduced from both loudspeakers confirms the successful linking between them: just press play on your Bluetooth device and your music will be played in STEREO from both loudspeakers.

- In case the Bluetooth symbol  on the display keeps on flashing, try to press the STEREO LINK button also in the MAIN loudspeaker.

NOTE: the STEREO LINK function allows to link the speakers only for playing music from a Bluetooth source. If you want to reproduce the instruments connected to the input channels of the first loudspeaker also on a second loudspeaker, you need to connect them physically using an XLR-XLR cable from the LINE OUT of the MASTER one to the LINE IN of the SLAVE one. Please do not use the STEREO LINK and cable connection at the same time.

NOTE: for using STEREO LINK the two loudspeakers must be in the range of 10 m (33 feet).



Use this button to link two loudspeakers thru Bluetooth (see above).

16. **PLAY/PAUSE**

PA US



This button changes the play mode of the audio files. A brief temporary text on the display shows the current mode.

ALL

ONE

~ An

FoLd FOLDER: it plays all songs contained in the current folder.

? A brief explanation of how the player works. When you insert an SD memory card or USB flash drive in the respective slot, the player scrolls the entire content of the memory locating all audio files that can be played (files with . WAV .MP3 .WMA. APE . FLAC extensions). All files will be played in numerical and alphabetical order, considering first the “name of the folder” and then the “name of the file”.



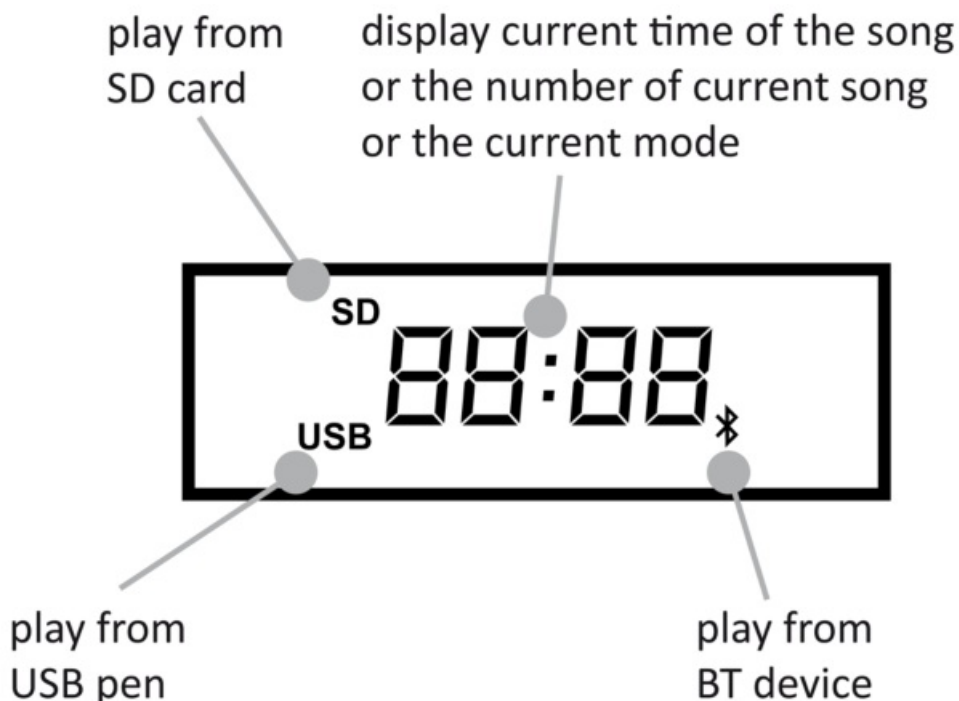
Use it to skip to the previous song with a short press and release action or rewind the current song keeping it pressed for a longer time.



Use it to skip to the next song with a short press and release action or fast forward to the current song keeping it pressed for a longer time.

17. LCD DISPLAY

The LCD DISPLAY shows several data:



18. POWER

Use this switch to power ON or OFF the loudspeaker. It is “ON” when the switch is in the “I” position.

19. ON

GREEN LED: when lighted indicates the equipment has been turned on and AC power is available.

20. AC~ SOCKET

Here's where you plug in your mains supply cord. You should always use the main cord supplied with the

device. Be sure that your device is turned off before you plug the mains supply cord into an electrical outlet.

21. FUSE holder

Here is where the main protection fuse is placed.



REPLACE THE PROTECTION FUSE ONLY WITH THE SAME TYPE.

IF, AFTER THE REPLACEMENT, THE FUSE BLOWS AGAIN, DO NOT TRY TO REPLACE IT AND CONTACT THE NEAREST PROEL SERVICE CENTER.

INSTALLATION

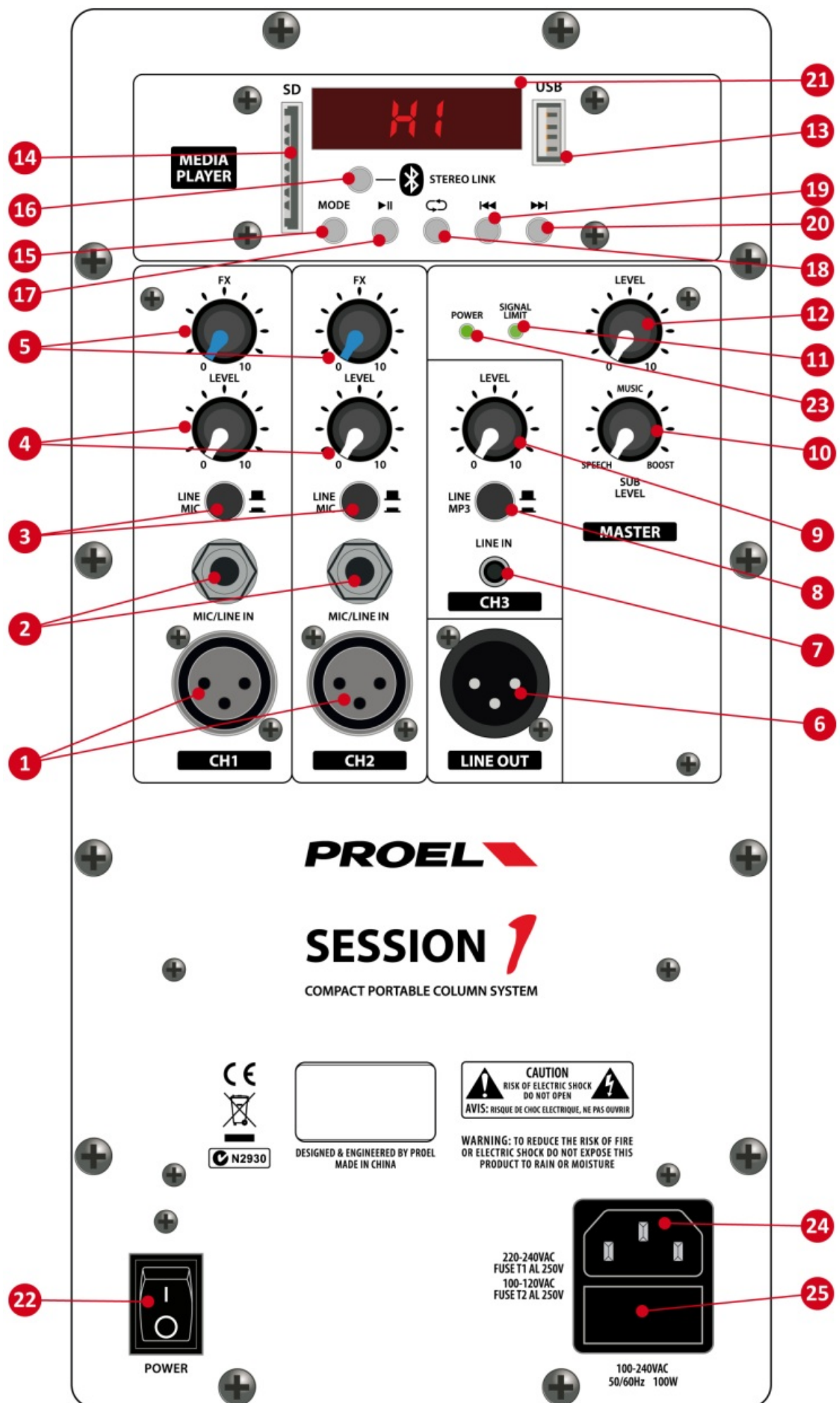
1. Insert the column modules upper the sub with the column speaker on top.
2. Optimize the total height of the column with the top just above the head of the audience.
3. Connect the devices you intend to use to the rear panel, power on, and enjoy.

TECHNICAL SPECIFICATIONS

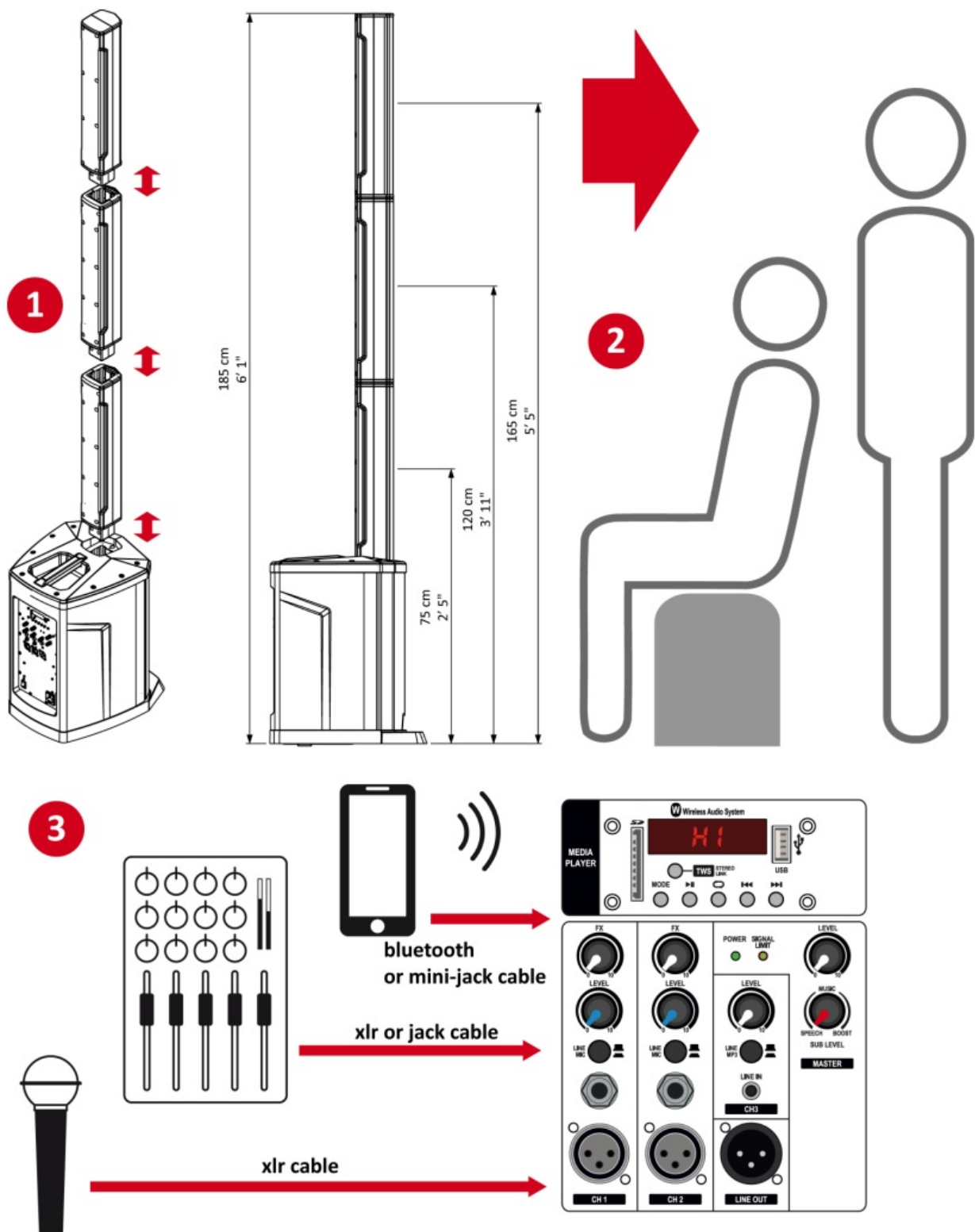
MIXER Section	
MONO inputs	2 x MIC/LINE IN (XLR-F + 1.4" JACK)
STEREO input	1 x LINE IN (MINI-JACK)
Outputs	LINE OUT (XLR-M)
EQ control	SUBLEVEL (SPEECH-MUSIC-BOOST)
Internal Effect	ECHO-DELAY
MULTIMEDIA Section	
Player Type	USB / SD / WIRELESS AUDIO player with STEREO LINK
Compatible File Formats	MP3, WAV, WMA, APE, FLAC
Control Interface	LCD display, CONTROL buttons
AMPLIFIER Section	
Total Peak Power	400 W
Continuous Power	200 W
Amplifier Type	Class D
Power Supply	SMPS
Processing	Analog
LOUDSPEAKER Section	
System type	Compact Powered Column System with Subwoofer
High-Frequency Device	4 x 2.5" (66mm) Drivers
Low-Frequency Device	8" (200mm) Woofer with 1.5" VC

Angular Coverage	90° H x 60° V
Frequency Response	50Hz – 18kHz
Max SPL	108 dB
GENERAL Specifications	
Construction	Polypropylene
Cabinet Color	Black
Column system	3-pcs with a fast-linking system and integral power connections
Handles	1 x subwoofer top
Accessories	Padded bag for 3-pcs column
Dimensions (W x H x D)	SUB: 318x 400 x484.5 mm COLUMN (each piece): 520 X 84 X 97.5 mm
Weight	21 Kg (complete system)
Power Supply	100-240 V~ 50/60 Hz
Rated Power Consumption	100 W

MAIN PANEL




INSTALLATION



PROEL

PROEL S.p.A.
 (World Headquarters – Factory)
 Via Alla Ruenia 37/43
 64027 Sant'Omero (Te) – Italy
Tel: +39 0861 81241
Fax: +39 0861 887862
www.proel.com

Documents / Resources

	<p>PROEL Session 1 Compact Portable Column System [pdf] User Manual Session 1 Compact Portable Column System, Session 1, Compact Portable Column System, Portable Column System, Column System</p>
---	--

References

-  [Proel World - We Are All Made Of Music](#)