

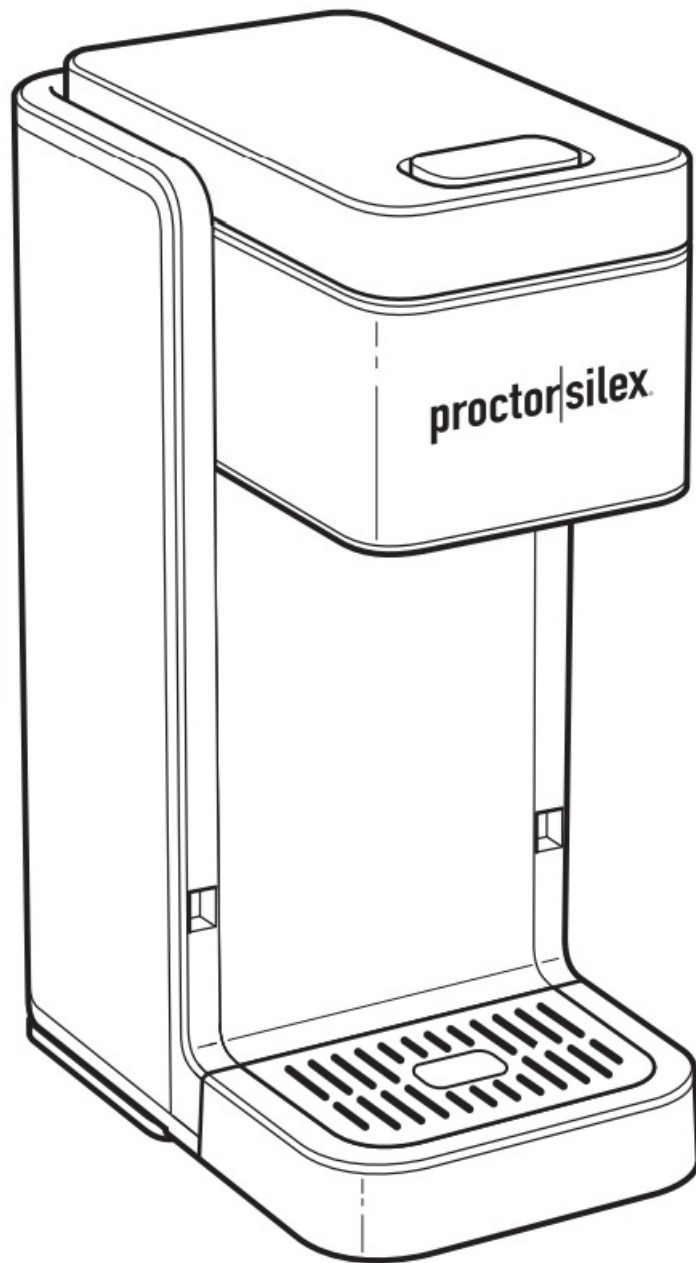


proctor silex Maker49919 Multi-Serve Coffee Maker User Manual

[Home](#) » [Proctor Silex](#) » proctor silex Maker49919 Multi-Serve Coffee Maker User Manual 

Proctor Silex[®]

**Maker49919 Multi-Serve Coffee Maker
User Manual**



READ BEFORE USE LIRE AVANT UTILISATION LEA ANTES DE USAR

proctorsilex.com

For recipes, tips, and product information.

ENTER TO WIN \$100 TO SPEND ON THE WEBSITE . Scan the code or visit: register.proctorsilex.com.



<http://qr.w69b.com/g/ljEvlAfRu>

Contents

1 IMPORTANT SAFEGUARDS

2 Other Consumer Safety Information

3 Parts and Features

4 How to Brew a Single-Serve Pod

5 How to Brew Ground Coffee

6 Care and Cleaning

7 Troubleshooting

8 Limited Warranty

9 Documents / Resources

9.1 References

10 Related Posts

IMPORTANT SAFEGUARDS

When using electrical appliances, basic safety precautions should always be followed to reduce the risk of fire, electric shock, and/or injury to persons, including the following:

1. Read all instructions.
2. This appliance is not intended for use by persons (including children) with reduced physical, sensory, or mental capabilities, or lack of experience and knowledge unless they are closely supervised and instructed concerning the use of the appliance by a person responsible for their safety.
3. Close supervision is necessary when any appliance is used by or near children. Cleaning and user maintenance shall not be made by children without supervision. Children should be supervised to ensure that they do not play with the appliance.
4. Do not touch hot surfaces. Use handles or knobs. Care must be taken, as burns can occur from touching hot parts or from spilled, hot liquid.
5. To protect against electric shock, do not place the cord, plug, or coffee maker in water or other liquid.
6. Unplug from the outlet when the coffee maker is not in use and before cleaning. Allow cooling before putting on or taking off parts and before cleaning the appliance.
7. The coffee maker must be operated on a flat surface away from the edge of the counter to prevent accidental tipping.
8. The use of accessory attachments not recommended by the appliance manufacturer may cause injuries.
9. Do not operate any appliance with a damaged supply cord or plug, or after the appliance malfunctions or has been dropped or damaged in any manner. Supply cord replacement and repairs must be conducted by the manufacturer, its service agent, or similarly qualified persons in order to avoid a hazard. Contact Customer Service for information on examination, repair, or adjustment as set forth in the Limited Warranty.
10. Do not use outdoors.
11. Do not let the cord hang over the edge of the table or counter or touch hot surfaces, including the stove.
12. Do not place the coffee maker on or near a hot gas or electric burner or in a heated oven.
13. To disconnect the coffee maker, remove the plug from the wall outlet. To unplug, grasp the plug and pull from the outlet. Never pull from the power cord.
14. Scalding may occur if the lid is removed during the heating cycle.
15. Do not place the coffee maker in a cabinet when in use.
16. **WARNING!** To avoid hot water spraying from the piercing needle, do not lift the lid during the brewing process.

17. **CAUTION! Cut Hazard:** Removable single-serve pod holder contains a sharp needle. Use caution when handling.
18. **CAUTION! Cut Hazard:** Piercing needle is sharp. Use caution when cleaning.

SAVE THESE INSTRUCTIONS

Other Consumer Safety Information

This appliance is intended for household use only.



WARNING Electrical Shock

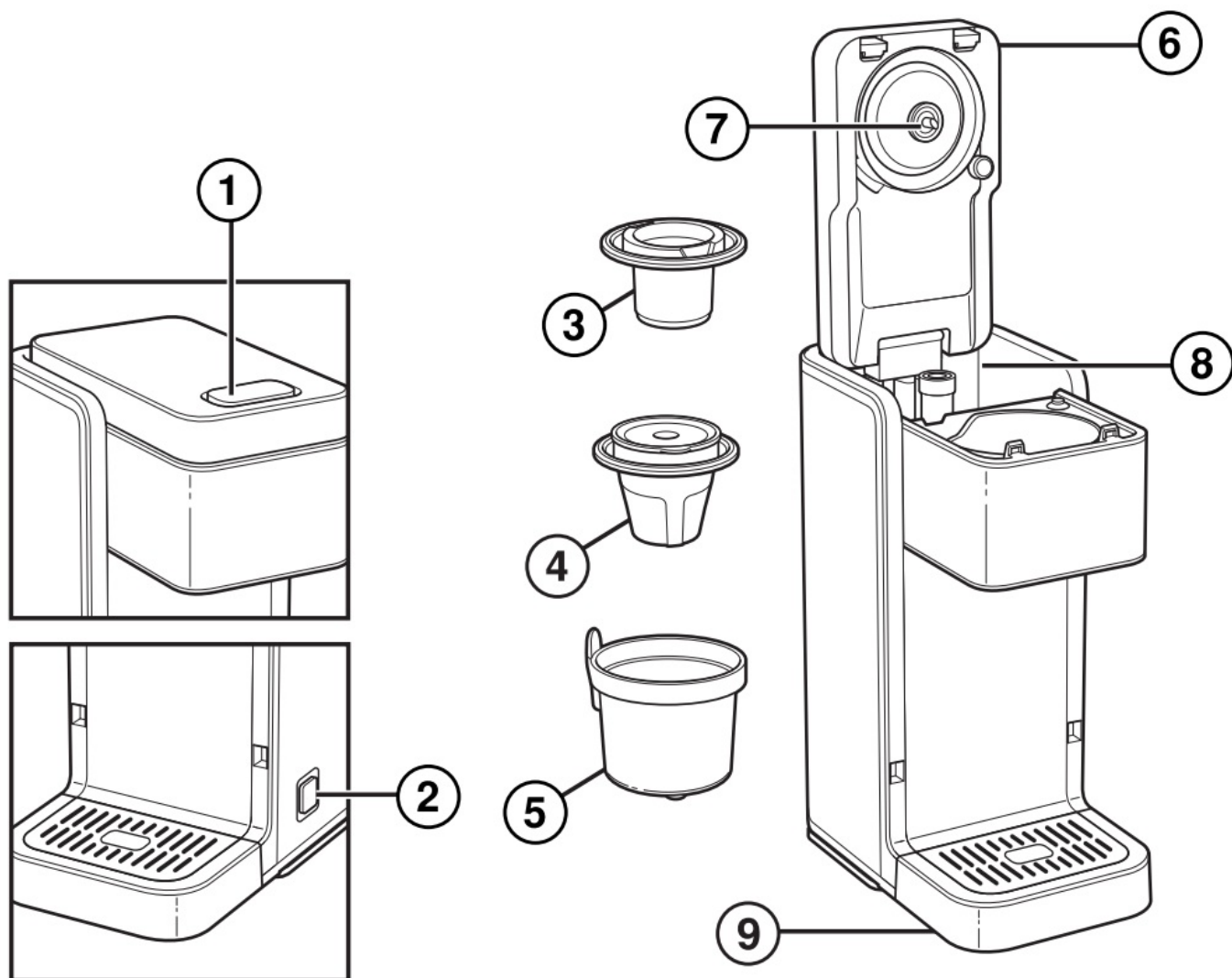
Hazard: This appliance is provided with a polarized plug (one wide blade) to reduce the risk of electric shock. The plug fits only one way into a polarized outlet. Do not defeat the safety purpose of the plug by modifying the plug in any way or by using an adapter. If the plug does not fit fully into the outlet, reverse the plug. If it still does not fit, have an electrician replace the outlet.

The length of the cord used on this appliance was selected to reduce the hazards of becoming tangled in or tripping over a longer cord. If a longer cord is necessary, an approved extension cord may be used. The electrical rating of the extension cord must be equal to or greater than the rating of the appliance. Care must be taken to arrange the extension cord so that it will not drape over the countertop or tabletop where it can be pulled on by children or accidentally tripped over.

To avoid an electrical circuit overload, do not use another high-wattage appliance on the same circuit as this appliance.

Parts and Features

To order parts, visit: proctorsilex.com/parts



1. Lid Release Button
2. BREW Button with Light
3. Removable Single-Serve Pod Holder (punches hole on the bottom of the pod)
4. Removable Grounds Basket with Lid (fits into Funnel for brewing)
5. Removable Funnel (holds Grounds Basket or K-Cup® Pack)
6. Lid
7. Piercing Needle
8. Water Reservoir (MAX 40 oz. [1183 mL])
9. Removable and Adjustable Cup Holder with Drip Tray

How to Brew a Single-Serve Pod



WARNING Burn Hazard.

To avoid contact with hot coffee or water:

- Do not fill water above the MAX fill line (40 ounces [1183 mL]).
- Fully insert a 10 to 12-ounce cup (284 to 341 mL) under the funnel.

**CAUTION Cut Hazard.**

Removable single-serve pod holder has a sharp blade. Use caution when handling.

NOTES:

- This Coffee Maker brews 10 ounces (284 mL) of coffee for each cup.
- It can take up to 2 minutes before brewed coffee starts dispensing into your cup. The total brew time average is 3 minutes. For best results, allow Coffee Maker to cool for at least 2 minutes between brewing cycles.
 1. Plug in Coffee Maker and ensure Removable Funnel is in place.
 2. Press the Lid Release Button and fill Water Reservoir to MAX Fill Line with 40 ounces (1183 mL) of cold water.
 3. Place a Pod into Single-Serve Pod Holder. Close Lid.
 4. Fully insert a 10 to 12-ounce (284 to 341 mL) cup or mug on Drip Tray. To adjust Drip Tray: Slide into openings for the positioning you want and push down to lock into place.
 5. Press the BREW Button. The Button will light up to show Coffee Maker is on.
 6. Coffee Maker will shut off automatically and the Light will go off when the brew cycle is completed.
 7. When done brewing, unplug Coffee Maker.

NOTES:

- Allow 2 minutes to cool in between brews.
- The removable Funnel and Removable Single-Serve Pod Holder should be rinsed after every use.
- Add only water to Water Reservoir. No need to refill if the Water Reservoir still has water in it.

How to Brew Ground Coffee**NOTES:**

- This Coffee Maker brews 10 ounces (284 mL) of coffee for each cup.
- It can take up to 2 minutes before brewed coffee starts dispensing into your cup. The total brew time average is 3 minutes. For best results, allow Coffee Maker to cool for at least 2 minutes between brewing cycles.

**WARNING Burn Hazard.**

To avoid contact with hot coffee or water:

- Do not fill water above the MAX fill line (40 ounces [1183 mL]).
- Fully insert a 10 to 12-ounce cup under the grounds basket.
- Remove the grounds basket before adding coffee grounds to the grounds basket.
- To avoid overflow, keep ground coffee below MAX fill line.
 1. Plug in Coffee Maker.
 2. Press the Lid Release Button and fill Water Reservoir to MAX fill line with 40 ounces (1183 mL) of cold

water.

3. Place the Removable Grounds Basket on a flat surface. Lift the Lid and add ground coffee (MAX fill line is 4 tablespoons [20 g]) to the Basket. Close lid on the Removable Grounds Basket.
4. Place the Removable Grounds Basket into Funnel in Coffee Maker. Close Lid.
5. Fully insert a 10 to 12-ounce (284 to 341 mL) cup or mug on Drip Tray. To adjust Drip Tray: Slide into openings for the position you want and push down to lock into place.
6. Press the BREW Button. The Button will Light up to show Coffee Maker is on.
7. Coffee Maker will shut off automatically and the Light will go off when the brew cycle is completed.
8. When done brewing, unplug.

NOTES:

- If finer ground coffee is used, coffee may continue to drip after the Light has gone off.
- Allow 2 minutes to cool in between brews.
- The removable Funnel and Grounds Basket should be rinsed after every use.
- Add only water to Water Reservoir. No need to refill if the Water Reservoir still has water in it.

Care and Cleaning

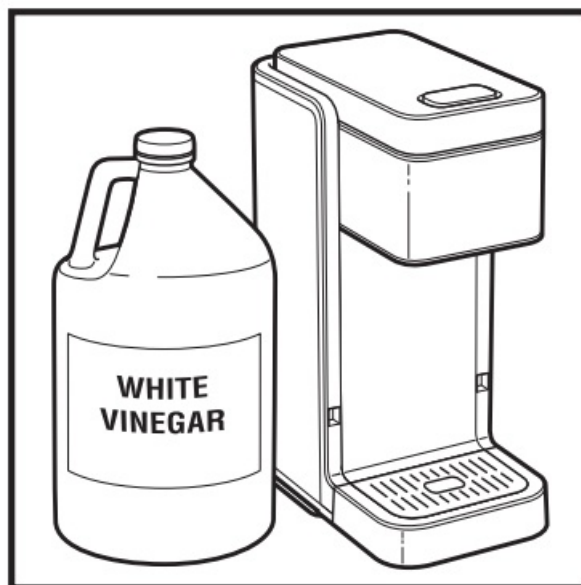


WARNING Electrical Shock Hazard.

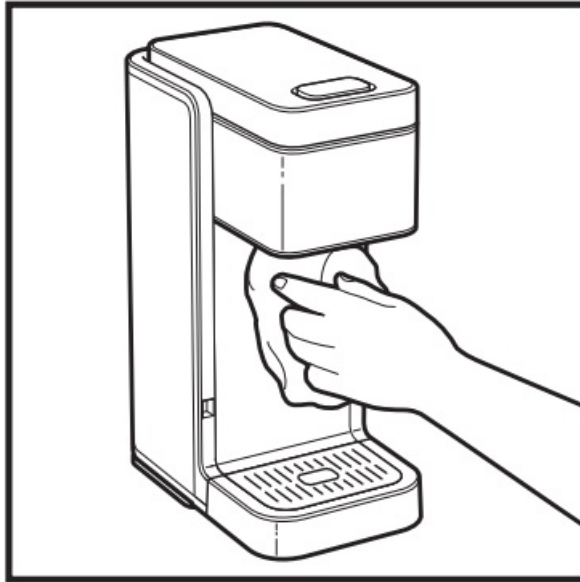
Do not immerse the cord, plug, or coffee maker in any liquid.

NOTE: All coffee makers should be cleaned at least once a month (once a week for areas with hard water).

1. Plug in Coffee Maker. Open Lid.



2. Pour 1 cup (237 mL) of plain white vinegar and 1 cup (237 mL) of cold water into Water Reservoir. Close Lid.
3. Place a 10 to 12-ounce (284 to 341 mL) cup underneath to catch the water/vinegar solution.
4. Press the BREW Button once. After 30 seconds, unplug the unit and allow the vinegar to clean. After 30 minutes, plug in the unit and allow it to finish the brew cycle. When the brew cycle is finished, wait for the unit to cool. Empty the cup and rinse. Run 4 cycles with cold tap water only. Empty the cup after each cycle.
5. Unplug Coffee Maker.

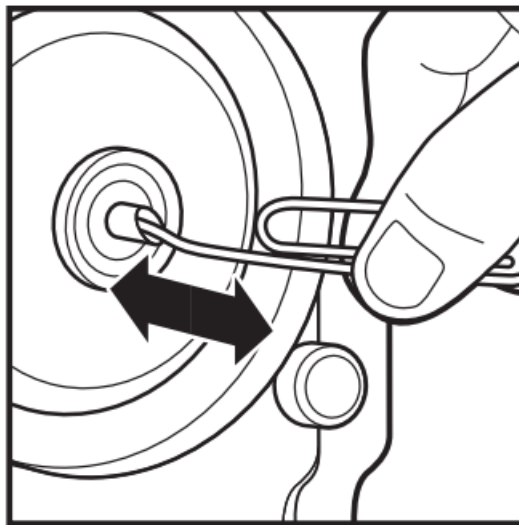


6. Wipe the exterior of the unit with a damp, soapy cloth.

7. The removable Single-Serve Pod Holder, Funnel, and Grounds Basket are all dishwasher-safe.

NOTE: DO NOT use the “SANITIZE” setting when washing in the dishwasher. “SANITIZE” cycle temperatures could damage your product.

Clogged Needle



1. Unplug and allow to cool.

2. Bend a small paper clip.

Insert the tip of the paper clip into the Needle and move up and down the needle to ensure grounds have been removed.

Troubleshooting

Coffee tastes bad.

- The coffee maker needs cleaning.
- Coffee is ground too coarsely or too finely. Set coffee grinder to automatic drip grind.
- Poor coffee quality and freshness.

- Poor water quality (use filtered or bottled water).

Water on a counter under the unit.

- Overfilled Water Reservoir.

The coffee Maker Light will not turn on and will not brew.

- Make sure you have allowed for 2 minutes of cool-down time.
- Check for water in Water Reservoir. If there is no water in Reservoir and BREW Button is pushed, Coffee Maker will not brew.

Coffee overflows from Funnel.

- Use a lesser amount of ground coffee.
- When using whole-bean coffee, a standard automatic drip coffee grind will yield the best results. Be careful not to over-grind, since very finely ground coffee can cause overflow in this Coffee Maker.

Coffee overflows from the mug.

- This Coffee Maker brews 10 ounces (284 mL) of coffee. To prevent coffee from overflowing, ensure that your cup or mug will hold 10 to 12 (284 to 341 mL) ounces.
- The brewing cycle has been interrupted. When Coffee Maker is stopped, it will start over and brew 10 ounces (284 mL).

Coffee not dispensing.

- The piercing Needle is clogged with coffee grounds. Turn Coffee Maker off; unplug it. Allow Coffee Maker to cool completely. To remove any built-up coffee grounds, insert the end of the bent paper clip into the Needle, and move up and down the needle to ensure the grounds have been removed.

Failed foil seal on Single-Serve Pod.

- There is variability in the single-serve pod manufacturing process which causes some types of single-serve pods to be weaker at the seams. Let cool 2 minutes between brewing, or try a different brand.

Water bubble in Water Reservoir.

- If making a second cup of coffee immediately after the first, you may notice a gurgle of water and steam when Lid is opened. It is recommended to wait 2 minutes between brews for Coffee Maker to cool down.

Limited Warranty

This warranty applies to products purchased and used in the U.S. and Canada. This is the only express warranty for this product and is in lieu of any other warranty or condition.

This product is warranted to be free from defects in material and workmanship for a period of three (3) years from the date of original purchase. During this period, your exclusive remedy is the replacement of this product or any component found to be defective, at our option; however, you are responsible for all costs associated with our returning a product or component under this warranty to you. If the product or component is unavailable, we will replace it with a similar one of equal or greater value. .


This warranty does not cover glass, filters, wear from normal use, use not in conformity with the printed directions, or damage to the product resulting from accident, alteration, abuse, or misuse. This warranty extends only to the original consumer purchaser or gift recipient. Keep the original sales receipt, as proof of purchase, is required to make a warranty claim. This warranty is void if the product is used for other than single-family household use or subjected to any voltage and waveform other than as specified on the rating label (e.g., 120 V ~ 60 Hz).

We exclude all claims for special, incidental, and consequential damages caused by a breach of express or implied warranty. All liability is limited to the amount of the purchase price.

Every implied warranty, including any statutory warranty or condition of merchantability or fitness for a particular purpose, is disclaimed except to the extent prohibited by law, in which case such warranty or condition is limited to the duration of this written warranty. This warranty gives you specific legal rights. You may have other legal rights that vary depending on where you live. Some states or provinces do not allow limitations on implied warranties or special, incidental, or consequential damages, so the foregoing limitations may not apply to you.

To make a warranty claim, do not return this appliance to the store. Please write Hamilton Beach Brands, Inc., Customer Service Department, 4421 Waterfront Dr., Glen Allen, VA 23060, or visit proctorsilex.com/customer-service in the U.S. or proctorsilex.ca/customer-service in Canada. For faster service, locate the model, type, and serial numbers on your appliance.

Documents / Resources

	<p>proctor silex Maker49919 Multi-Serve Coffee Maker [pdf] User Manual 49919 Multi-Serve Coffee Maker, 49919, Multi-Serve Coffee Maker</p>
---	--

References

- [Home | Proctor Silex Canada](#)
- [Customer Service | Proctor Silex Canada](#)
- [Home | ProctorSilex.com](#)
- [Inicio | Proctor Silex Mexico](#)
- [Customer Service | ProctorSilex.com](#)
- [Parts & Accessories | ProctorSilex.com](#)
- [Wholesale - Proctor Silex](#)