

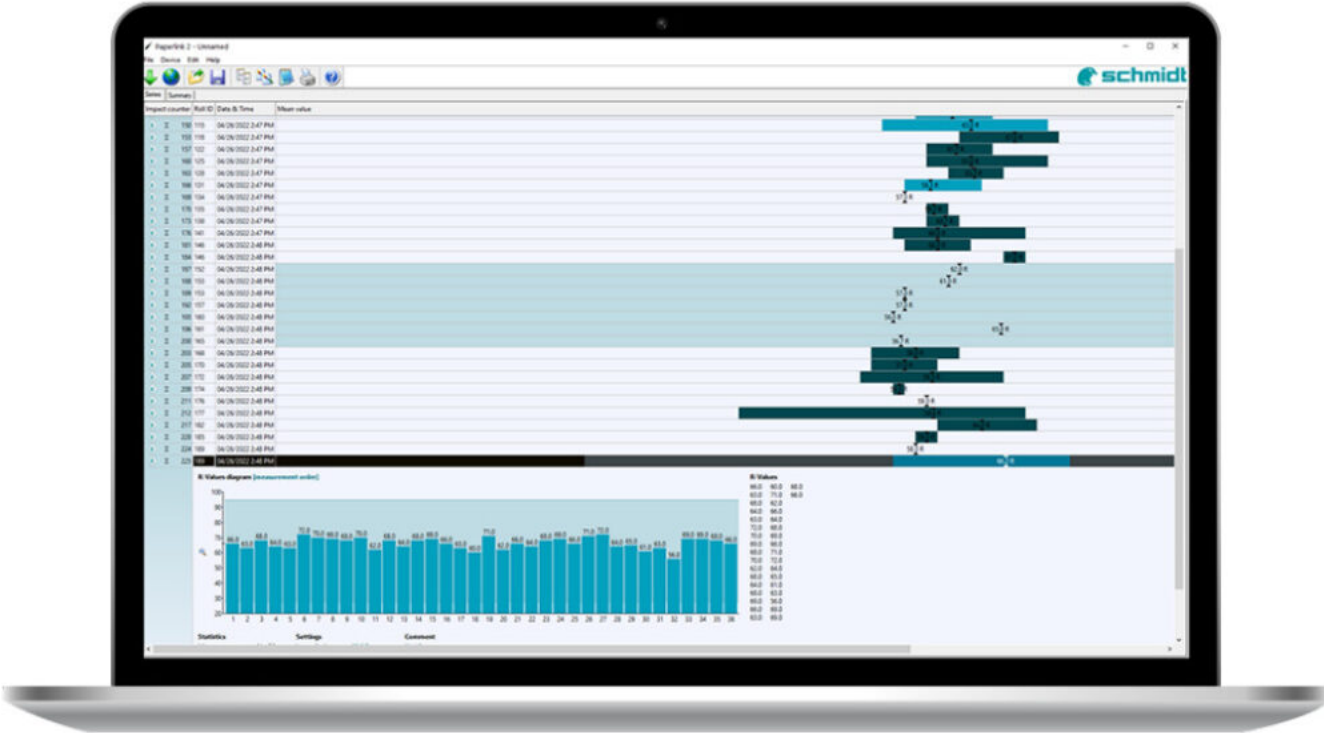


proceq Paperlink 2 Roll Testing Software Instruction Manual

[Home](#) » [proceq](#) » proceq Paperlink 2 Roll Testing Software Instruction Manual 



Paperlink 2 Roll Testing Software Instruction Manual



Document Information

Document Revision:	1.2
Revision Date:	—
Document State:	Released
Company:	Proceq SA
Classification:	Ringstrasse 2 CH-8603 Schwerzenbach Switzerland Manual

Revision History

Rev	Date	Author, Comments
1	Mar 14, 2022	PEGG Initial document
1.1	Mar 31, 2022	DABUR, product name updated (PS8000)
1.2	Apr 10, 2022	DABUR, Images update and software name updated, redactional corrections

Legal Notices

This document can be changed without any prenotification or announcement.

The content of this document is the intellectual property of Proceq SA and is prohibited from being copied neither in a photomechanical or electronic way, nor in excerpts, saved, and/or passed on to other persons and institutions.

The features described in this instruction manual represent the complete technology of this instrument. These features are either included in the standard delivery or available as options at additional costs.

Illustrations, descriptions, and technical specifications conform to the instruction manual at hand at the time of publishing or printing. However, Proceq SA's policy is one of continuous product development. All changes resulting from technical progress, modified construction or similar are reserved without obligation for Proceq to update.

Some of the images shown in this instruction manual are of a pre-production model and/or are computer-generated; therefore the design/features on the final version of this instrument may differ in various aspects.

The instruction manual has been drafted with the utmost care. Nevertheless, errors cannot be entirely excluded.

The manufacturer will not be liable for errors in this instruction manual or for damages resulting from any errors.

The manufacturer will be grateful at any time for suggestions, proposals for improvement, and references to errors.

Contents

- [1 Introduction](#)
- [2 Paperlink Software](#)
- [3 Exporting data](#)
- [4 Further Functions](#)
- [5 Technical Information Paperlink 2 software](#)
- [6 Documents / Resources](#)
 - [6.1 References](#)
- [7 Related Posts](#)

Introduction

Paper Schmidt

The Paper Schmidt PS8000 is a precision instrument designed for testing roll profiles of paper rolls with a high degree of repeatability.

Paperlink Software

Starting Paperlink 2



Download the Paperlink 2 from

https://www.screeningeagle.com/en/products/Paperlink2_Setup Schmidt and locate the file “Paperlink2_Setup” on your computer

Follow the instructions you see on the screen. This will install Paperlink 2 on your PC including the necessary USB driver. It will also create a desktop icon for launching the program.

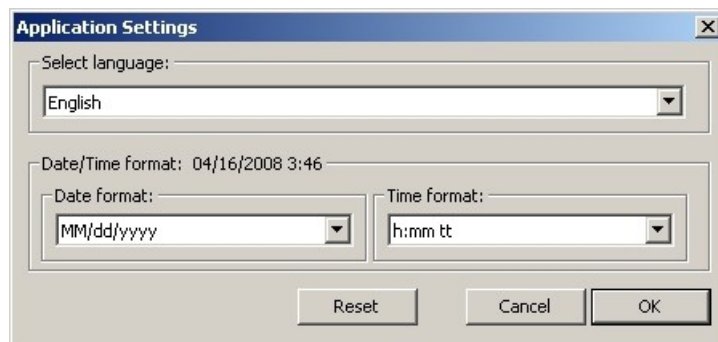


Either click on the desktop icon or click on the Paperlink 2 entry in the “Start” menu. “Start – Programs – Proceq – Paperlink 2”.

Click on the “Help” icon to bring up the complete operating instructions.

Application settings

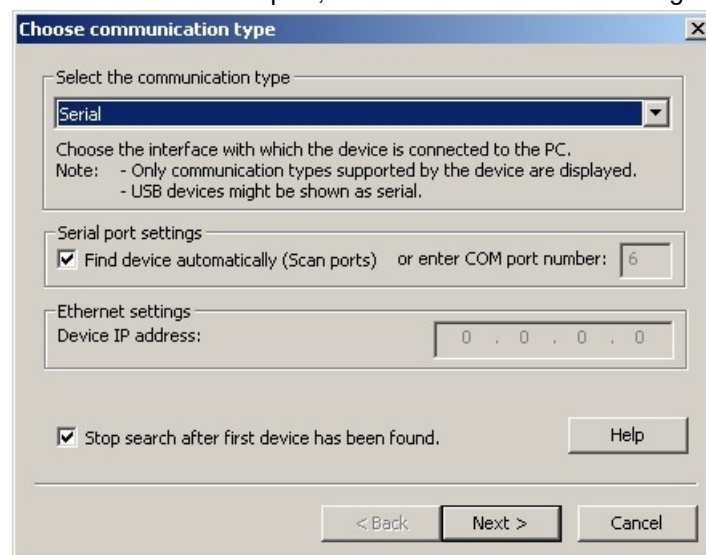
The menu item “File – Application settings” allows the user to select the language and the date and time format to be used.



Connecting to the Paper Schmidt



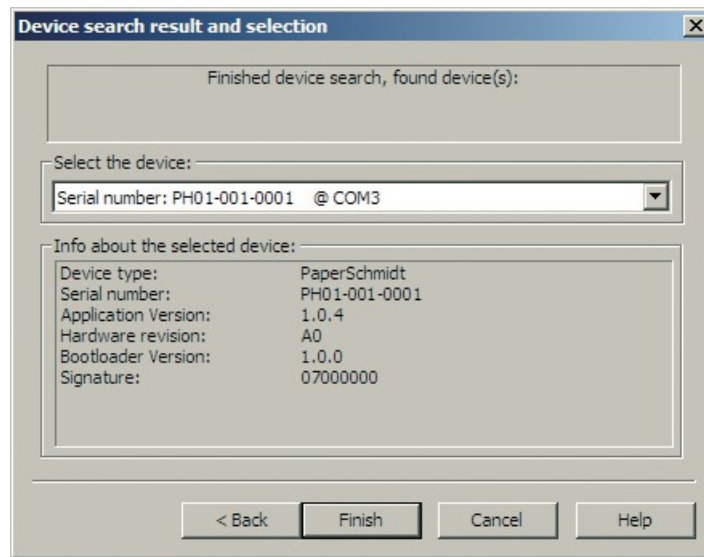
Connect your Paper Schmidt to a free USB port, then click on the icon to bring up the following window:



Leave the settings as default or if you know the COM port you can enter it manually.

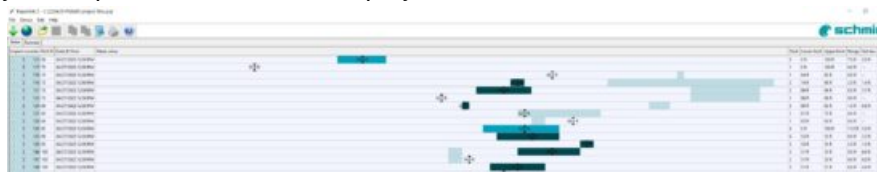
Click on “Next >”

The USB driver installs a virtual com port which is used to communicate with the Paper Schmidt. When a Paper Schmidt has been found you will see a window like this: Click on the “Finish” button to establish the connection.



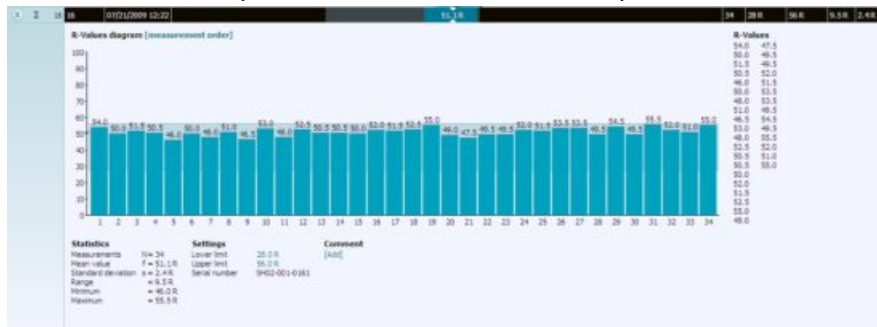
Viewing the data

The data stored on your Paper Schmidt will be displayed on the screen:



- The test series is identified by the “Impact counter” value and by a “Roll ID” if assigned.
- The user may alter the Roll ID directly in the “Roll ID” column.
- The “Date & Time” when the measurement series was made.
- The “Mean value”.
- The “Total” number of impacts in this series.
- The “Lower limit” and “Upper limit” are set for that series.
- The “Range” of the values in this series.
- The “Std dev.” The standard deviation of the measurement series.

Click on the double arrow icon in the impact counter column to see the profile.



PaperLink – Manual

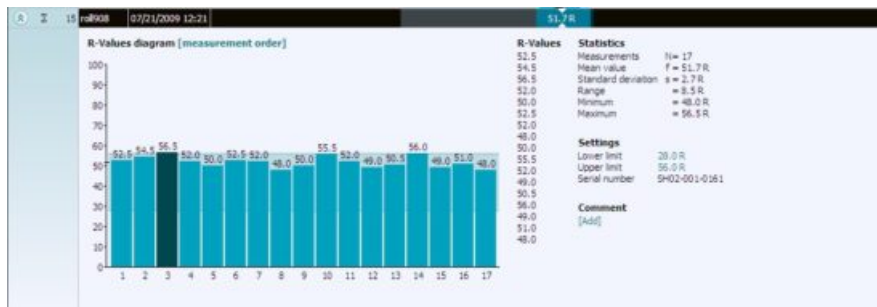


Note The user may also add a comment to the measurement series. To do so, click on “Add”.



Note The user may alter the order in which the measurements are shown. Click on “measurement order” to switch to “ordered by value”.

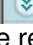
If limits have been set, they are displayed as follows with a blue band. It is also possible to adjust the limits directly in this window by clicking on the blue limit values.



In this example, the third reading can be clearly seen to be outside the limits.

Summary window

In addition to the "Series" view described above, Paperlink 2 also provides the user with a "Summary" window. This may be useful when comparing a batch of rolls of the same type.

Series Summary		
Impact counter	Roll ID	Date & Time
 Σ 14	roll034959	07/22/2009 12:19

Click on the respective tab to switch between views.



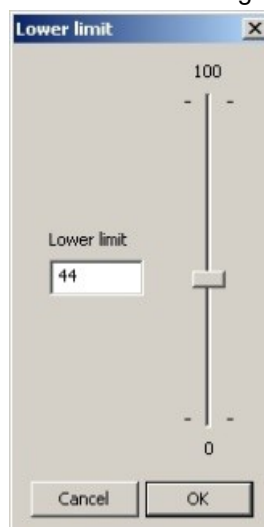
Note To include or exclude a series from the summary, click on the summary symbol in the impact counter column. This symbol is either "black" or "greyed out", which shows whether or not the particular series is included in the summary. The summary view can be adjusted in a similar way to the detailed view of a series.

Adjusting the max/min settings

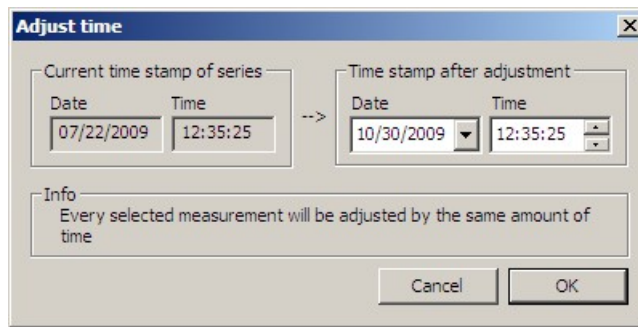
Maximum and Minimum settings that were used in the Paper Schmidt at the time of the measurement series can be adjusted subsequently in Paperlink 2.



Note This can be done either by right-clicking directly on the item in the appropriate column or by clicking on the blue setting item in the detailed view of a measurement series. In each case, a selection box will appear with the choice of setting.



Adjusting the date and time



The time will be adjusted for the selected series only.

Exporting data

Paperlink 2 allows you to export selected series or the entire project for use in third-party programs.

To export the selected series, click on the table of the measurement series you wish to export. It will be highlighted as shown.

14	14	08034999	07/22/2009	12:39	17	20 R	56 R	6.0 R	1.4 R
15	15	08034999	07/22/2009	12:32	17	20 R	56 R	8.5 R	2.7 R
16	16	07/22/2009	12:33	24	20 R	56 R	9.5 R	2.4 R	
17	17	07/22/2009	12:34	17	20 R	56 R	6.0 R	1.9 R	
18	18	07/22/2009	12:36	17	20 R	56 R	6.0 R	2.7 R	
21	21	07/22/2009	12:38	18	20 R	56 R	10.0 R	3.2 R	
22	22	07/22/2009	12:36	18	20 R	56 R	10.5 R	2.9 R	
23	23	07/22/2009	12:36	18	20 R	56 R	37.5 R	8.6 R	
24	24	07/22/2009	12:36	18	20 R	56 R	10.0 R	2.8 R	
25	25	07/22/2009	12:37	18	20 R	56 R	9.5 R	2.8 R	



Click on the “Copy as text” icon.

The data for this measurement series is copied to the clipboard and can be pasted into another program such as Excel. If you wish to export the individual impact values of the series, you have to display them by clicking on the double arrow icon as described above before you “Copy as text”.



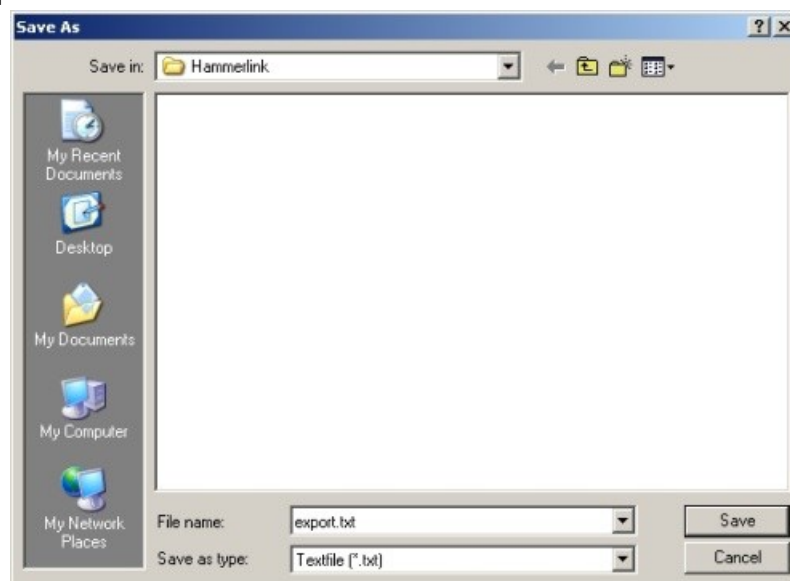
Click on the “Copy as picture” icon

For exporting the selected items only into another document or report. This performs the same action as above, but the data is exported in the form of a picture and not as text data.



Click on the “Export as text” icon

Allows you to export the entire project data as a text file that can then be imported into another program such as Excel. Click on the “Export as text” icon.



This will open the “Save As” window where you can define the location in which you wish to store the *.txt file. Give the file a name and click on “Save” to save it.



Note Paperlink 2 has two “tabs” with two display formats. “Series” and “Summary”. When performing this operation, the project data will be exported in the format defined by the active “Tab”, i.e. either in “series” or “summary” format.

To open the file in Excel, locate the file and right-click on it, and “Open with” – “Microsoft Excel”. The data will be opened in an Excel document for further processing. Or drag and drop the file into an open Excel window.

Deleting and restoring data

The menu item “Edit – Delete” allows you to delete one or more selected series from the downloaded data.



Note This does not delete data from the Paper Schmidt, only data in the current project.

The menu item “Edit – Select all”, allows the user to select all series in the project for exporting etc.

Restoring the original downloaded data

Select the menu item: “File – Restore all original data” to restore the data to the original format as it was downloaded. This is a useful feature if you have been manipulating the data, but wish to go back to the raw data once again.

A warning will be given to say that the original data is about to be restored. Confirm to restore.



Note Any names or comments that have been added to the series will be lost.

Deleting data stored on the Paper Schmidt

Select the menu item “Device – Delete all Data on Device” to delete all data stored on the Paper Schmidt.

A warning will be given to say that the data is about to be deleted on the device. Confirm to delete.



Note Please note, that this will delete every measurement series and cannot be undone. It is not possible to delete individual series.

Further Functions

The following menu items are available via the icons at the top of the screen:



“Upgrade” icon

Allows you to upgrade your firmware via the Internet or from local files.



“Open project” icon

Allows you to open a previously saved project. It is also possible to drop a *.pqr file onto Paperlink 2 to open it.



“Save project” icon

Allows you to save the current project. (Note this icon is greyed out if you have opened a previously saved project.



“Print” icon

Allows you to print out the project. You may select in the printer dialog if you want to print out all of the data or selected readings only.

Technical Information Paperlink 2 software

System requirements: Windows XP, Windows Vista or newer, USB-Connector

An Internet connection is necessary for automatic updates, if available.

An Internet connection is necessary for firmware updates (using PqUpgrade), if available.

PDF Reader is required to show the “Help Manual”.


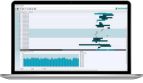
SWISS MADE

For safety and liability information, please check www.screeningeagle.com/en/legal
Subject to change. Copyright © Proceq SA. All rights reserved.

EUROPE Proceq AG Ringstrasse 2 8603 Schwerzenbach Zurich Switzerland T +41 43 355 38 00	MIDDLE EAST AND AFRICA Proceq Middle East and Africa Sharjah Airport International Free Zone P.O.Box: 8365 United Arab Emirates T +971 6 5578505
UK Screening Eagle UK Limited Bedford i-lab, Stannard Way Priory Business Park MK44 3RZ Bedford London United Kingdom T +44 12 3483 4645	SOUTH AMERICA Proceq SAO Equipamentos de Medição Ltda. Rua Paes Leme 136 Pinheiros, Sao Paulo SP 05424-010 Brasil T +55 11 3083 3889
USA, CANADA & CENTRAL AMERICA Screening Eagle USA Inc. 14205 N Mopac Expressway Suite 533 Austin, TX 78728 United States	CHINA Proceq Trading Shanghai Co., Limited Room 701, 7th Floor, Golden Block 407-1 Yishan Road, Xuhui District 200032 Shanghai China T +86 21 6317 7479
Screening Eagle USA Inc. 117 Corporation Drive Aliquippa, PA 15001 United States T +1 724 512 0330	ASIA-PACIFIC Proceq Asia Pte Ltd. 1 Fusionopolis Way Connexis South Tower #20-02 Singapore 138632 T +65 6382 3966

© Copyright 2022, PROCEQ SA

Documents / Resources

<div><p>Paperlink 2 Roll Testing Software</p><p>Instruction Manual</p></div>	<p>proceq Paperlink 2 Roll Testing Software [pdf] Instruction Manual Paperlink 2, Roll Testing Software, Paperlink 2 Roll Testing Software</p>
---	--

References

[Manuals+.](#)