


PROCELL 3242349 Kaba Lock Module



PROCELL 3242349 Kaba Lock Module User Guide

[Home](#) » [PROCELL](#) » PROCELL 3242349 Kaba Lock Module User Guide 

Contents

- [1 PROCELL 3242349 Kaba Lock Module](#)
- [2 Specifications](#)
- [3 Product Usage Instructions](#)
- [4 FAQ](#)
- [5 QUICK-START GUIDE](#)
- [6 ADDITIONAL RESOURCES](#)
- [7 Documents / Resources](#)
 - [7.1 References](#)



PROCELL 3242349 Kaba Lock Module



Specifications

- Model #: 3242349-KABALOCK
- Product name: Kaba Lock Module
- IC ID: 31527-KABALOCK
- FCC ID: 2BC3M-KABALOCK
- ISED RSS warning

Product Usage Instructions

1. Battery Replacement:

1. Open your device.
2. Replace the batteries with new ones.

2. App Setup:

1. Open the app on your mobile device.
2. Name and describe your device in the Description field.
3. Add location data for your device.
4. Tap 'Register Device' to complete the setup.

3. Safety Measures:

Ensure that the battery cables are safely put away and securely close your device after setup.

4. Radiation Exposure Compliance:

This equipment complies with ISED RF radiation exposure limits and FCC radiation exposure limits. Maintain a minimum distance of 20cm between the radiator and your body during installation and operation. Do not co-locate this equipment with other antennas or transmitters.

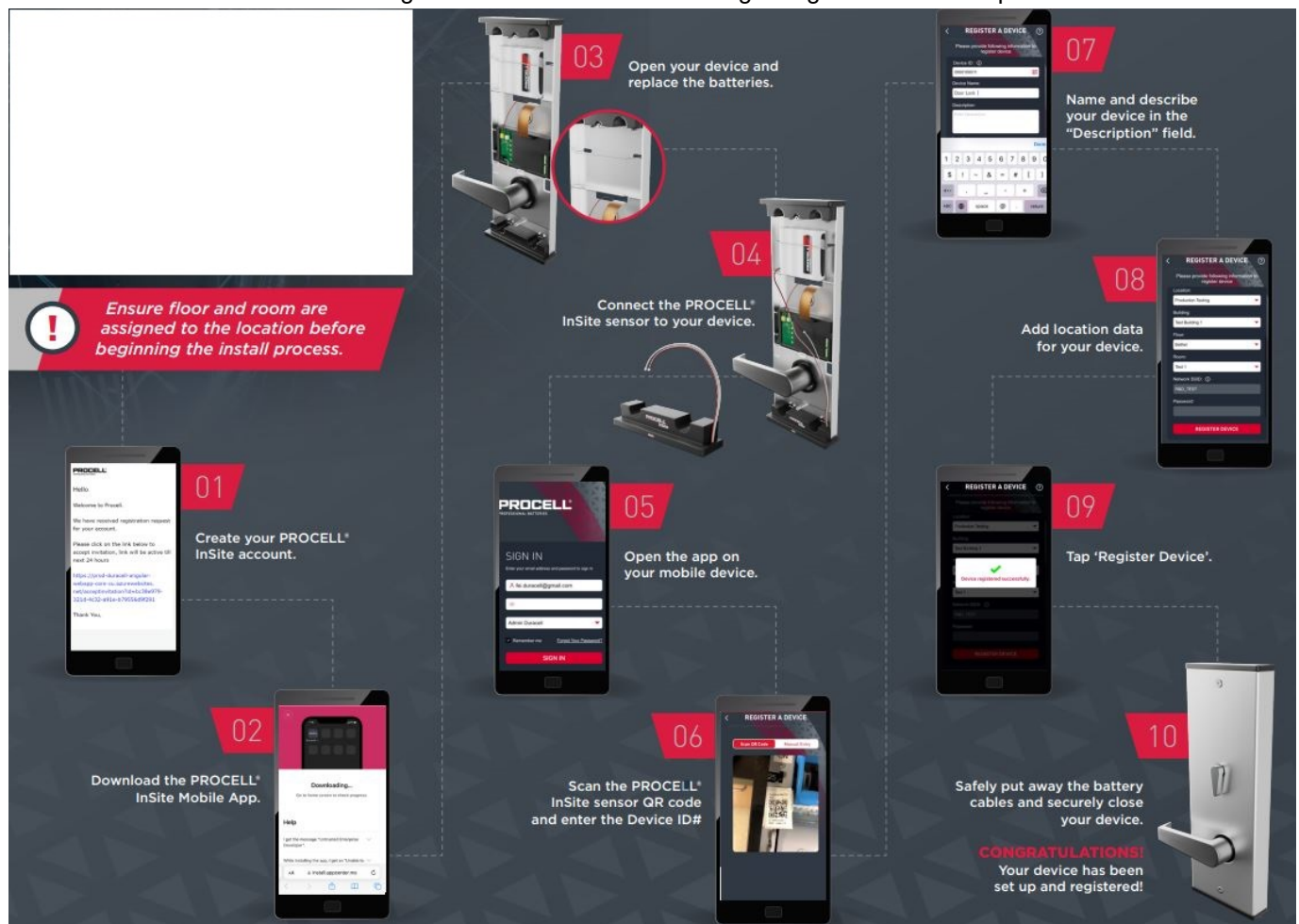
FAQ

- **Q: How do I know if my device has been successfully registered?**
 - A: Upon successful registration, you will receive a confirmation message on the app or device.
- **Q: Can I use rechargeable batteries for this device?**
 - A: It is recommended to use standard replaceable batteries for optimal performance.

QUICK-START GUIDE

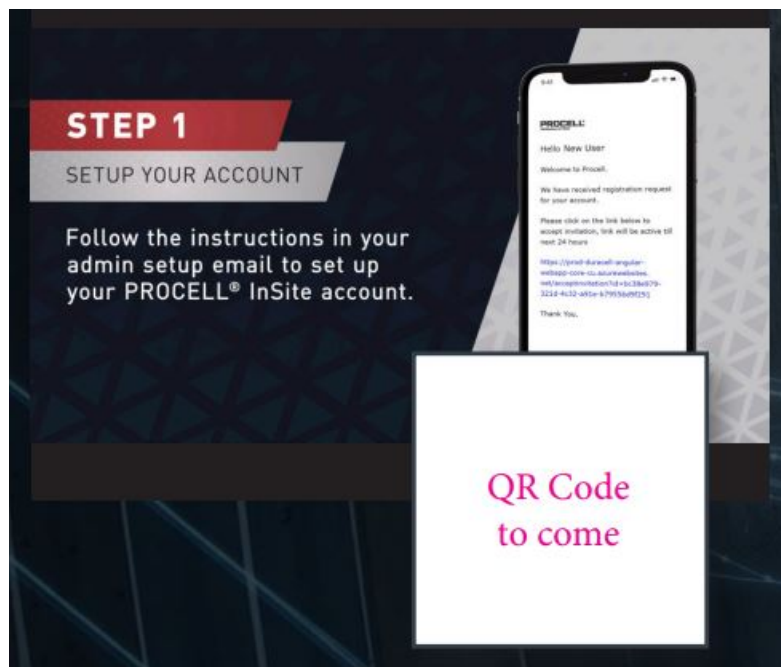
- Model #: 3242349-KABALOCK
- Product name: Kaba Lock Module

Ensure the floor and room are assigned to the location before beginning the installation process.

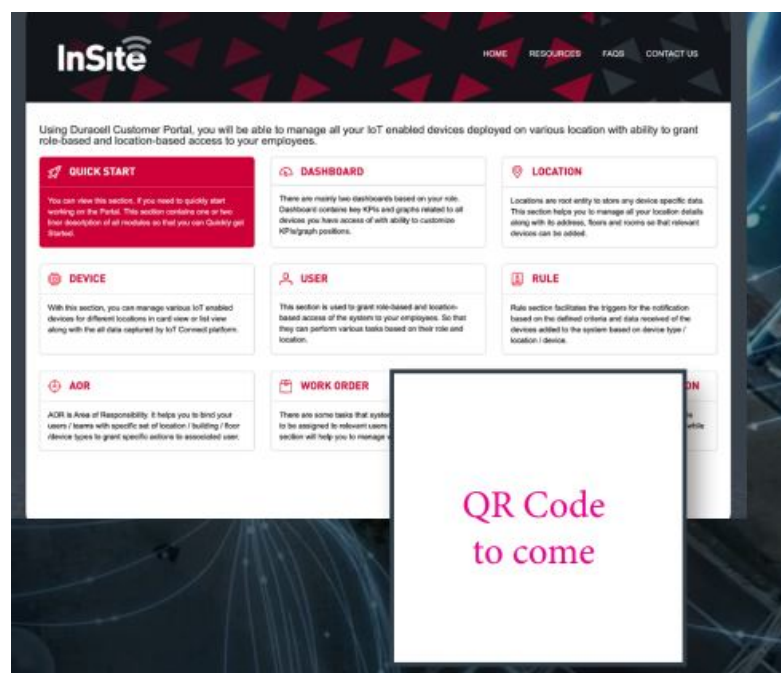


ADDITIONAL RESOURCES

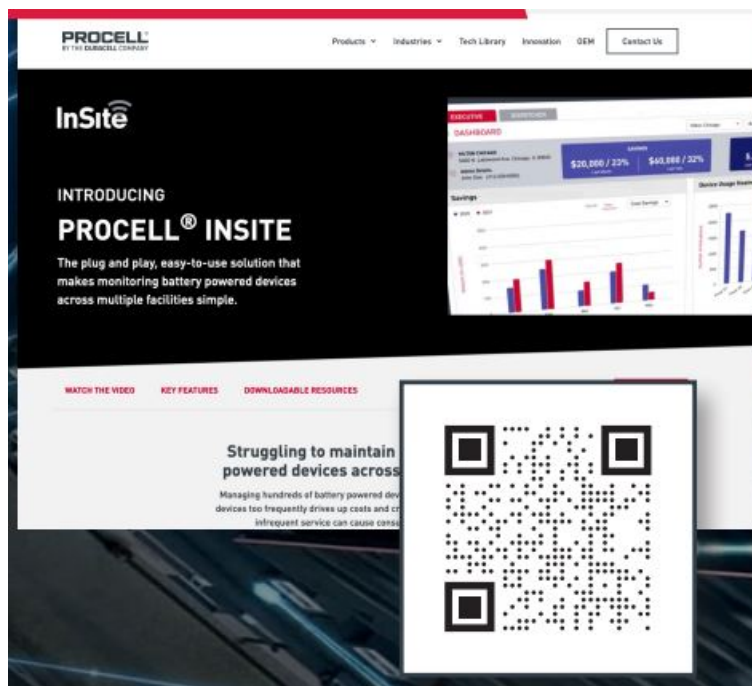
Quick-Start Video



User Guide Website



InSite Website



- IC ID: 31527-KABALOCK
- ISEDC RSS warning

This device complies with the Innovation, Science and Economic Development Canada Compliance licence-exempt RSS standard (s). Operation is subject to the following two conditions: (1) this device may not cause interference, and (2) this device must accept any interference, including interference that may cause undesired operation of the device.

ISEDC Radiation Exposure Statement:

This equipment complies with ISEDC RF radiation exposure limits set forth for an uncontrolled environment. This transmitter must not be co-located or operating in conjunction with any other antenna or transmitter. This equipment should be installed and operated with a minimum distance 20cm between the radiator& your body.

- **FCC ID:** 2BC3M-KABALOCK
- **FCC statement**

This device complies with part 15 of the FCC Rules. Operation is subject to the following two conditions:

1. This device may not cause harmful interference, and
2. this device must accept any interference received, including interference that may cause undesired operation.

Any changes or modifications not expressly approved by the party responsible for compliance could void the user's authority to operate the equipment. This equipment has been tested and found to comply with the limits for a Class B digital device, pursuant to part 15 of the FCC Rules. These limits are designed to provide reasonable protection against harmful interference in a residential installation. This equipment generates, uses and can radiate radio frequency energy and, if not installed and used in accordance with the instructions, may cause harmful interference to radio communications. However, there is no guarantee that interference will not occur in a particular installation. If this equipment does cause harmful interference to radio or television reception, which can be determined by turning the equipment off and on, the user is encouraged to try to correct the interference by one or more of the following measures:

- Reorient or relocate the receiving antenna.
- Increase the separation between the equipment and the receiver.
- Connect the equipment to an outlet on a circuit different from that to which the receiver is connected.
- Consult the dealer or an experienced radio/TV technician for help.

FCC Radiation Exposure Statement

This equipment complies with FCC radiation exposure limits set forth for an uncontrolled environment. This equipment should be installed and operated with a minimum distance of 20cm between the radiator & your body.

Documents / Resources



[PROCELL 3242349 Kaba Lock Module](#) [pdf] User Guide
3242349, 3242349 Kaba Lock Module, Kaba Lock Module, Lock Module, Module

References

- [User Manual](#)

[Manuals+](#), [Privacy Policy](#)

This website is an independent publication and is neither affiliated with nor endorsed by any of the trademark owners. The "Bluetooth®" word mark and logos are registered trademarks owned by Bluetooth SIG, Inc. The "Wi-Fi®" word mark and logos are registered trademarks owned by the Wi-Fi Alliance. Any use of these marks on this website does not imply any affiliation with or endorsement.