



PROAIM P-JS Heavy Duty Stand Camera Jib Crane Instruction Manual

[Home](#) » [PROAIM](#) » PROAIM P-JS Heavy Duty Stand Camera Jib Crane Instruction Manual 

Contents

- [1 P-JS Heavy Duty Stand Camera Jib Crane](#)
- [2 What's In The Box](#)
- [3 Heavy-Duty Stand Setup](#)
- [4 Documents / Resources](#)
 - [4.1 References](#)
- [5 Related Posts](#)

P-JS Heavy Duty Stand Camera Jib Crane



Heavy-Duty Stand for Camera Jib Crane
(P-JS)



What's In The Box

Please inspect the contents of your shipped package to ensure you have received everything that is listed below.



Proaim Heavy-Duty Stand for Camera Jib Crane

All rights reserved.

No part of this document may be reproduced, stored in a retrieval system, or transmitted by any form or by any means, electronic, mechanical, photo-copying, recording, or otherwise, except as may be expressly permitted by the applicable copyright statutes or in writing by the Publisher.

Heavy-Duty Stand Setup

- Loosen the knob of the Heavy Duty Stand and spread its legs on the floor (as per your requirement) then tighten the knob back.

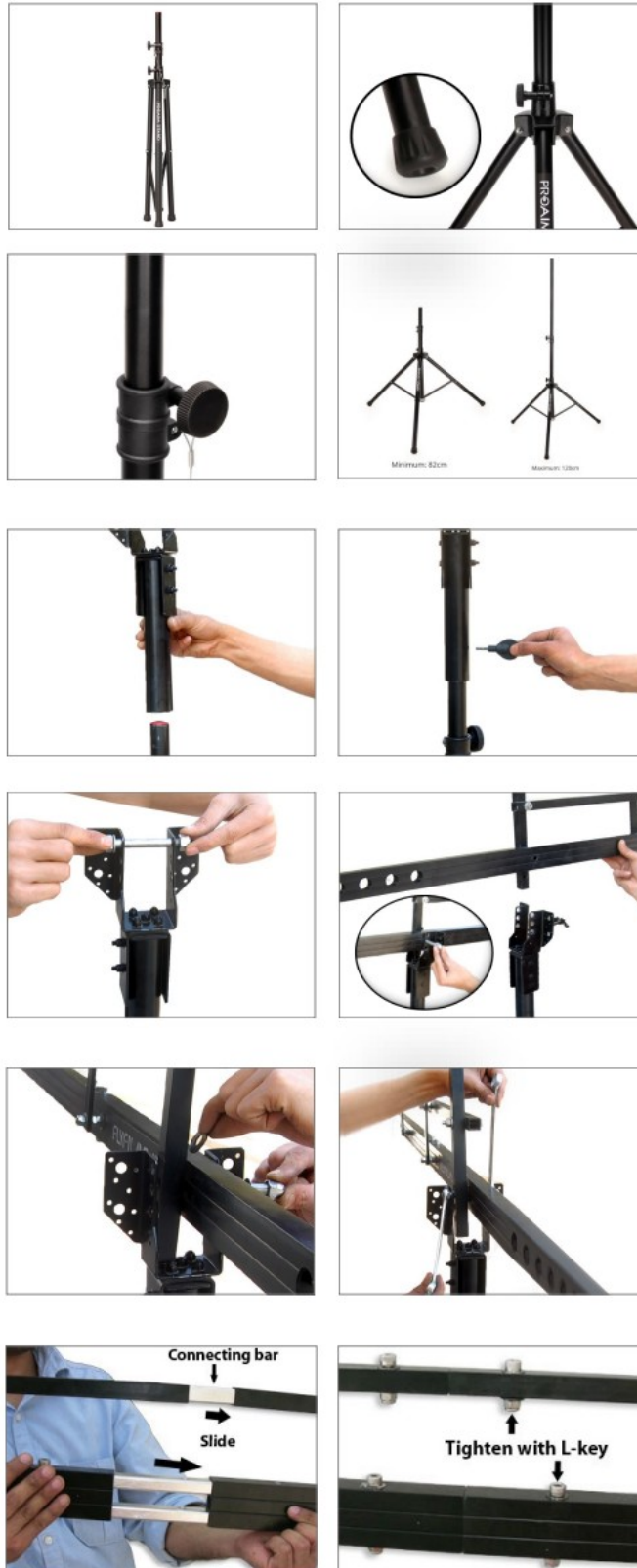
NOTE: The Tripod itself has sturdy rubber feet, so you can stably use it on hard or slippery surfaces.

NOTE: The Stand has sections to adjust the height with quick & secure locking knobs. The central main post of the stand is adjustable, through which you can change its height as you require. The stand has a quick-lock mechanism that lets you adjust the Tripod's height and balance it within seconds.

- Mount the Center Post (Not Included) of the Jib onto the Stand and tighten the knob to secure it.

NOTE: The Jib stand has adjustable height from 44" to 88" and can be easily adjusted to capture the perfect perspective.

- Open the shank from the central post (Not Included). Leave the black washers at one side.
- Then insert the end of this section (Not Included). Inside the Center Post and align the holes of the section with the central post to screw in the shank.
- Similarly, insert the black washers onto the other side and push the shank towards the other side in order to tighten the shank with the dome nut.
- Use Wrench tool to tighten the dome nut from both sides to secure the Jib Sections (Not Included).
- The Middle section (Not Included) has connecting bars attached to both the ends. Slide the bars of Middle section into the slots on Front section & tighten both the sections together using the provided Allen Key.



- Assembly is complete now setup is ready to use.



YOUR PROAIM HEAVY-DUTY STAND FOR CAMERA JIB CRANE ALL DRESSED UP AND READY TO GO!



(SHOWN WITH OPTIONAL ACCESSORIES)

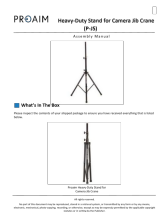
Warranty: We offer one year warranty for our products from date of purchase. Within this period of time, we will repair it without charge for labor or parts. Warranty doesn't cover transportation costs nor does it cover a product subjected to misuse or accidental damage. Warranty repairs are subjected to inspection and evaluation by us.

Liability: We are not liable for damage caused by products that we do not supply or from mishandling in transit, accident, misuse, neglect, lack of care of the product, or service by anyone other than our company.

Contact Us: In case of any kind of dissatisfaction, please Contact us immediately and we promise our utmost support and care until you use our product.

PROAIM

Documents / Resources

	<p>PROAIM P-JS Heavy Duty Stand Camera Jib Crane [pdf] Instruction Manual</p> <p>P-JS Heavy Duty Stand Camera Jib Crane, P-JS, Heavy Duty Stand Camera Jib Crane, Stand Camera Jib Crane, Camera Jib Crane, Jib Crane</p>
---	---

References

- [User Manual](#)

[Manuals+](#), [Privacy Policy](#)

This website is an independent publication and is neither affiliated with nor endorsed by any of the trademark owners. The "Bluetooth®" word mark and logos are registered trademarks owned by Bluetooth SIG, Inc. The "Wi-Fi®" word mark and logos are registered trademarks owned by the Wi-Fi Alliance. Any use of these marks on this website does not imply any affiliation with or endorsement.