



PROAIM P-9-TS 9ft Camera Crane Jib with Stand User Manual

[Home](#) » [PROAIM](#) » PROAIM P-9-TS 9ft Camera Crane Jib with Stand User Manual 



9ft Camera Crane Jib with Stand (P-9-TS) Assembly Manual



Contents

- [1 What's In The Box](#)
- [2 Jib Stand Setup](#)
- [3 Adding The Counter Weights](#)
- [4 Mounting the Monitor](#)
- [5 Documents / Resources](#)
- [6 Related Posts](#)

What's In The Box

Please inspect the contents of your shipped package to ensure you have received everything that is listed below.



Front section (3.75ft)



LCD Mounting Arm



End sections (3.75ft)



Weight shank



Support bar with handle



Weight closer

All rights reserved.

No part of this document may be reproduced, stored in a retrieval system, or transmitted by any form or by any means, electronic, mechanical, photocopying, recording, or otherwise, except as may be expressly permitted by the applicable copyright statutes or in writing by the Publisher.



Central Post



Tool pouch



Storage Bag



Jib Stand

Jib Stand Setup

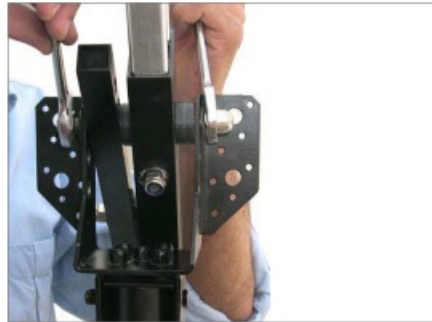
For stability and mounting of your 9' Jib Arm on the stand, remove the stand from the case and proceed as follows:

- Loosen the lower knob located at the top of the spreader legs. slide the legs down the center post to the widest possible position and tighten knob 1 to secure. A widespread ensures more stability. Draw the center post up to the desired jib height and lock into place using the provided locking pin.



Jib Arm Setup

- Slide the central post of the jib onto the stand mount and secure it with the provided knob.

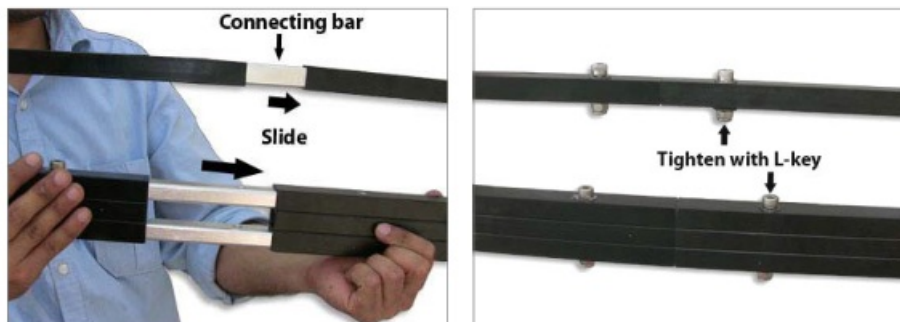


- Attach the End section of Jib with the Central Post. Using a wrench, tighten the dome nut from both sides to secure the two sections.

Connecting Front Section to End Section

- The front section has connecting bars attached to one end, as shown in the image. Slide in the end section and the support bar with handle into the slots on front section.

Tighten the two sections together using the supplied Allen Key and tighten the Allen key as before to secure the sections. Your arm build is now complete.



Adding The Counter Weights

- Securing the counterweights to the Jib is accomplished by the use of the stainless steel shank. It has two lock-offs, one for each side of the arm to prevent the weights from shifting during use or accidentally falling off the jib. Standard exercise weights (Not Included) with a 1" hole are easily mountable and are used to equal the weight placed on the camera side of the Jib.



- Once you discover the correct balance, consider marking the weights for that particular camera facilitating an easier setup the next time.

NOTE: You will need to fine-tune your Counterweights to accommodate the camera, head, and other accessories being used on the jib arm.



Camera Mounting Plate

- To accommodate various manufacturers and different-sized cameras, multiple slots are provided for attachment.

Mounting The Pan / Tilt Head

- If you are using the remote capability of a Pan/Tilt Head, it can be easily mounted to the jib via the 4 slots located at the corners of the plate using 4 screws. Pan/ Tilt Head is not provided. This assembly is usually accomplished from the underside (bottom) of the jib camera plate.

Pin Feature For Tilting Shots

- Removing the locking pin from the Center Post, allows the operator to frame tilting shots by the use of a control handle.



- Lock the pin for keeping your camera (Not Included) in a fixed angle to take stable shots.

Mounting the Monitor

- Attach the LCD mounting arm with the provision on central post to attach the LCD monitor (Not Included).



YOUR PROAIM 9FT CAMERA CRANE JIB WITHSTANDS ALL DRESSED UP AND READY TO GO!




(SHOWN WITH OPTIONAL ACCESSORIES)

Warranty: We offer one year warranty for our products from date of purchase. Within this period of time, we will repair it without charge for labor or parts. The warranty doesn't cover transportation costs nor does it cover a product subjected to misuse or accidental damage. Warranty repairs are subjected to inspection and evaluation by us.

Liability: We are not liable for damage caused by products that we do not supply or from mishandling in transit, accident, misuse, neglect, lack of care of the product, or service by anyone other than our company.

Contact Us: In case of any kind of dissatisfaction, please Contact us immediately and we promise our utmost support and care until you use our product.

Documents / Resources

	<p>PROAIM P-9-TS 9ft Camera Crane Jib with Stand [pdf] User Manual</p> <p>P-9-TS 9ft Camera Crane Jib with Stand, P-9-TS, 9ft Camera Crane Jib with Stand, Camera Crane Jib with Stand, Jib with Stand</p>
---	--