

Proaim ATLS-V2-48 Atlas Video Production Camera Cart



Proaim ATLS-V2-48 Atlas Video Production Camera Cart Instruction Manual

[Home](#) » [PROAIM](#) » Proaim ATLS-V2-48 Atlas Video Production Camera Cart Instruction Manual



Contents

- [1 Proaim ATLS-V2-48 Atlas Video Production Camera Cart](#)
- [2 What's In The Box](#)
- [3 Atlas Cart Setup](#)
- [4 Assembly of Pneumatic Tires with Break or without break](#)
- [5 Assembly of Rods](#)
- [6 Assembly of Upper shelf](#)
- [7 Warranty](#)
- [8 Documents / Resources](#)
 - [8.1 References](#)
- [9 Related Posts](#)



Proaim ATLS-V2-48 Atlas Video Production Camera Cart



What's In The Box

Please inspect the contents of your shipped package to ensure you have received everything that is listed below. All rights reserved. No part of this document may be reproduced, stored in a retrieval system, or transmitted by any form or by any means, electronic, mechanical, photo-copying, recording, or otherwise, except as may be expressly permitted by the applicable copyright statutes or in writing by the Publisher.



Atlas Cart Setup



- To open the Atlas Cart, unlock its locking knob
- Repeat the same process to unlock the remaining locking knobs.



- Now, separate the upper and lower shelves.
- Remove foam from the lower shelf, as shown in the image.

Assembly of Pneumatic Tires with Break or without break

- Loosen the knobs of Pneumatic Tires (with Brake).

NOTE: The brakes don't loosen over time, even when the tires experience wear and tear and the thickness decreases.

- Now, Slide the brake wheel into the lower shelf and secure it using the locking knob.
- The brake wheel is properly attached to the Cart. Repeat the same process to attach the second wheel.
- Repeat the same process to attach the Pneumatic Tires (without Brake).

NOTE: The specially designed foot brakes of the Atlas V2 Cart keep it stable and secure for reliable parking when you are not close to the Cart.

Assembly of Rods



- Loosen the knob of the locking clamp to open the clamp.



- After opening the clamp, position the rod vertically, as shown in the image.
- Place the remaining rods vertically repeating the same process.

Assembly of Rod Adapters



- insert the Rod Adapter into the upper shelf and properly insert the bolt (Size: 5x12mm).



- Tighten all the bolts using the Allen key (4mm) and repeat the same with the remaining Adapters.
- Now, open the lever locks of all the rod adapters.

Assembly of Upper shelf



- Mount the top shelf on the rods and lock the locking levers to secure it.
- **NOTE:** You need two people to setup your top shelf on the rods.
- **NOTE:** These shelves allow you to lift the Cart from both sides and load it into the truck or other vehicles. You can also use these to raise the Cart over obstacles or move it from one place to another.

Handle Assembly



- Open the handle and attach it to the rod, as shown in the image.
- Repeat the same process re poseion the second Handle.

NOTE: The Handles assist the operator in lifting the Cart over obstacles, stairs or oter uneven sunaces.

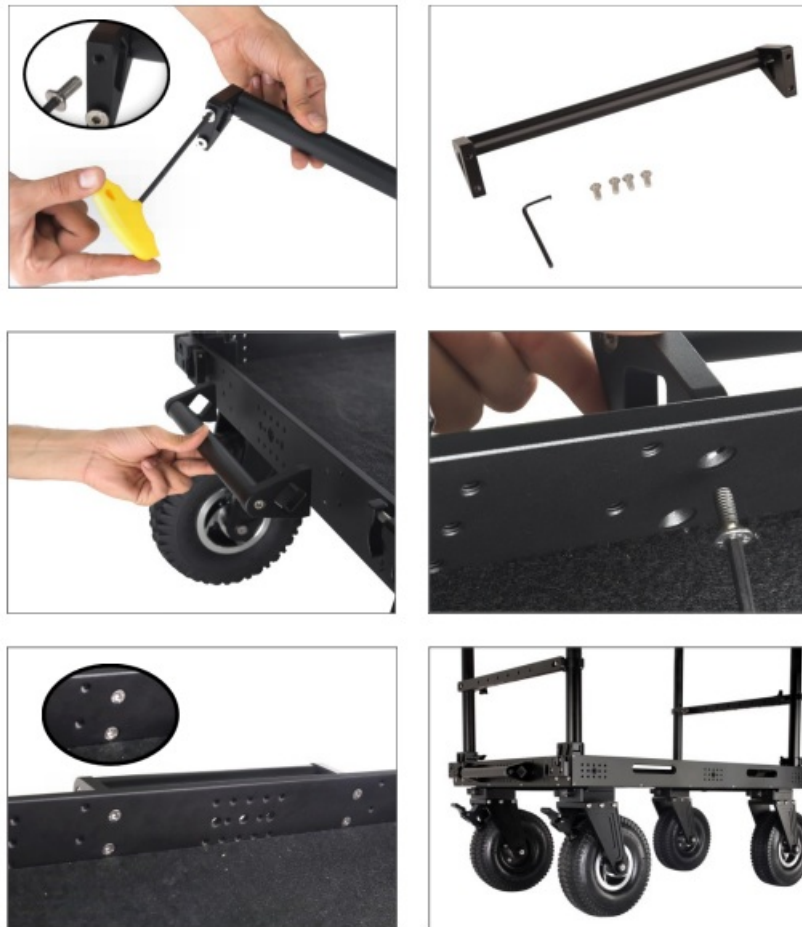
Crossbar Assembly



- To open the clamp, loosen its knob, as shown in the image.
- Attach the clamp of the Crossbar with the rods and tighten the knobs to secure it.

- Attach the second Crossbar using the same process. The cart with Crossbars will look as shown in the image.

Carrying Handle Assembly



- Loosen the screws of carrying handle using the Allen key (4mm).



- Place the Carrying Handle on the side of the lower shelf. Now, match its screw and insert it using the Allen key.
- Repeat the same process to screw all the remaining screws of the Handle. Your Cart is ready for use

YOUR PROAIM ATLAS V2 VIDEO PRODUCTION CAMERA CART ALL DRESSED UP AND READY TO GO!




Warranty

We offer one year warranty for our products from date of purchase. Within this period of time, we will repair it without charge for labor or parts. Warranty doesn't cover transportation costs nor does it cover a product subjected to misuse or accidental damage. Warranty repairs are subjected to inspection and evaluation by us.

Liability: We are not liable for damage caused by products that we do not supply or from mishandling in transit, accident, misuse, neglect, lack of care of the product, or service by anyone other than our company.

Contact Us: In case of any kind of dissatisfaction, please Contact us immediately and we promise our utmost support and care until you use our product.

Documents / Resources

	<p>Proaim ATLS-V2-48 Atlas Video Production Camera Cart [pdf] Instruction Manual ATLS-V2-48 Atlas Video Production Camera Cart, ATLS-V2-48, Atlas Video Production Camera Cart, Video Production Camera Cart, Production Camera Cart, Camera Cart, Cart</p>
---	---

References

- [User Manual](#)