



pro ENGINEERS Rotating Dual-Camera Endoscope User Manual

[Home](#) » [pro ENGINEERS](#) » pro ENGINEERS Rotating Dual-Camera Endoscope User Manual 



Rotating Dual-Camera Endoscope
User Manual



360°rotating dual-camera endoscope

Please read the manual carefully before operating the system.
Please charge the battery before using.

Contents

- [1 Safety and Notice](#)
- [2 Parts list](#)
- [3 Quick Start Guide](#)
- [4 Menu](#)
- [5 Documents / Resources](#)
- [6 Related Posts](#)

Safety and Notice



Warning To avoid electrical shock put the item indoor when charging





Warning Use only input AC 110~240V output DC 12.6V charger. This machine can only use the original charger and lithium battery, reminding the charging time is 5 hours. Please charge the battery before use!

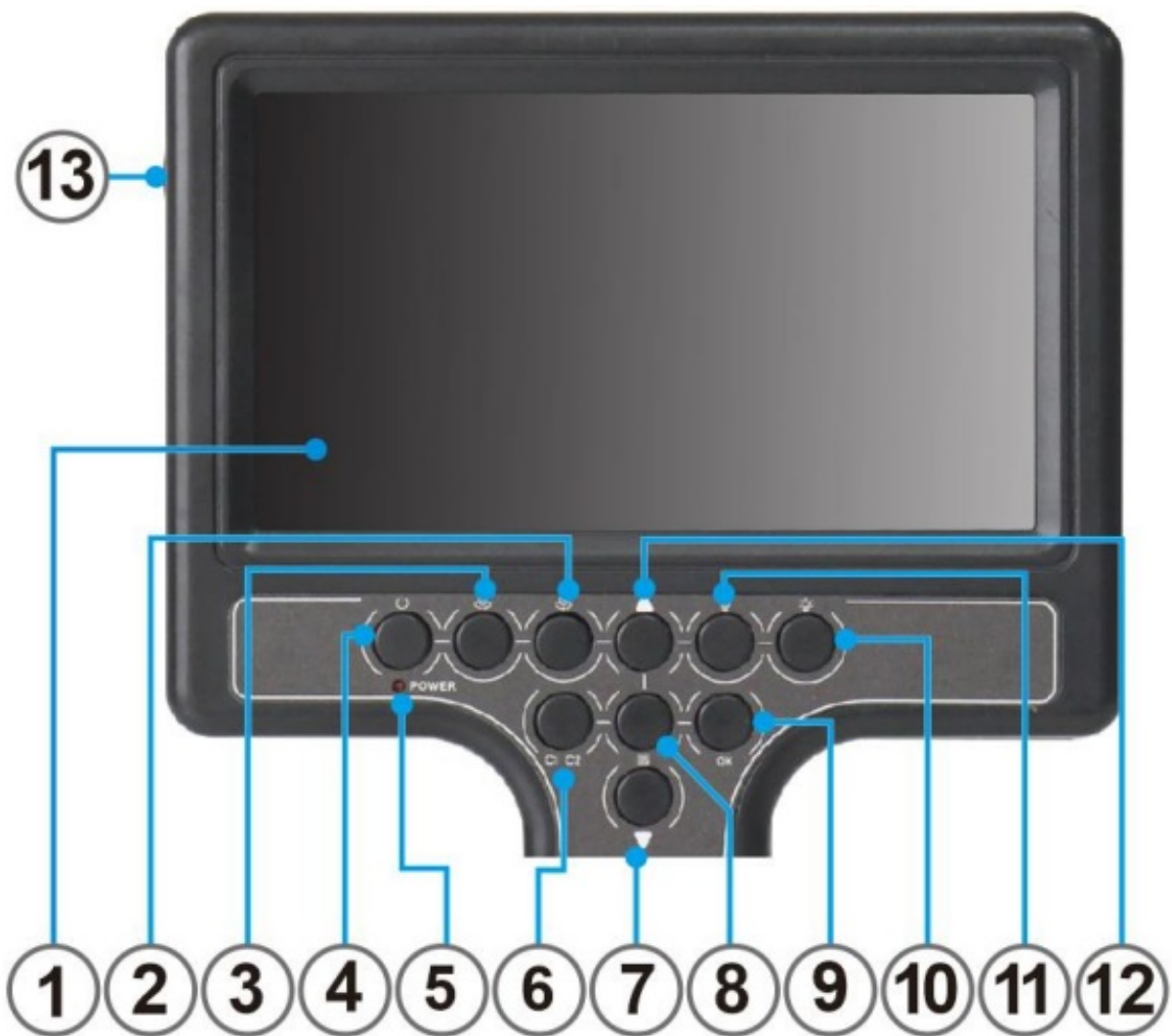
1. Please check the appearance and functionality of the goods upon receipt. In the event of damaged or missing goods, please forward images to us within 3 working days, Otherwise, we will not be able to provide after-sales service
2. Working environment of camera system -10°C~50°C(14°F~122°F)95% RH; Storage environment: -20~70(-4~158) 95% RH.
3. The warranty becomes void if any physical damage is present by user or force majeure factors or if the system is disassembled or connect non-factory parts by the user
4. Use only the original accessories to avoid possible risks to health and property, and thus meet all related legal regulations.
5. Keep controller dry.
6. Do not drop, knock, or shake the inspection system. Inappropriate behavior when using the camera system may damage the internal electronic circuit board or deform the lens shape.
7. Make sure all accessories are connected before starting up.
8. Do not remove or install camera when the machine is turned on. If replacement is required, please replace it in the power off state.

Parts list

1.1 Accessories

Item	Image	Description	Optional
Camera Head		Camera Head size:Ø22*77mm Dual cameras Pan 360°	Standard
Controller		7-inch color display screen Battery:12V 2800mAh 31Wh	Standard
Sun visor.		Size:198.5*94*68mm Material: engineering plastics	Standard
Hose line		Size:Ø6mm*5000mm Material: plastic coated steel wire	Standard
Charger		Input:AC 100-240V 50/60Hz Output:DC 12.6V / 1A	Standard
Waterproof Ring		Material: silicone Size: Ø20*1.5mm	Standard
Manual		Manual	Standard
Suitcase		Size:410*330*130mm Material: engineering plastics	Standard

1.2 Controller



1	7-inch display
2	Pan-left
3	Pan-right
4	On/Off
5	Power-on indicator
6	Dual camera switching
7	Down
8	Menu
9	Image flip
10	Light brightness up
11	Light brightness down
12	UP
13	DC JACK

Quick Start Guide

2.1 Battery charging

1. Remove the accessories from the box;
2. Charge the controller battery;
 1. Connect the adapter to the 100-220V power supply.



2. Connect the plug to the jack of the controller.



3. When charging is completed, the charging indicator will change from red to green.

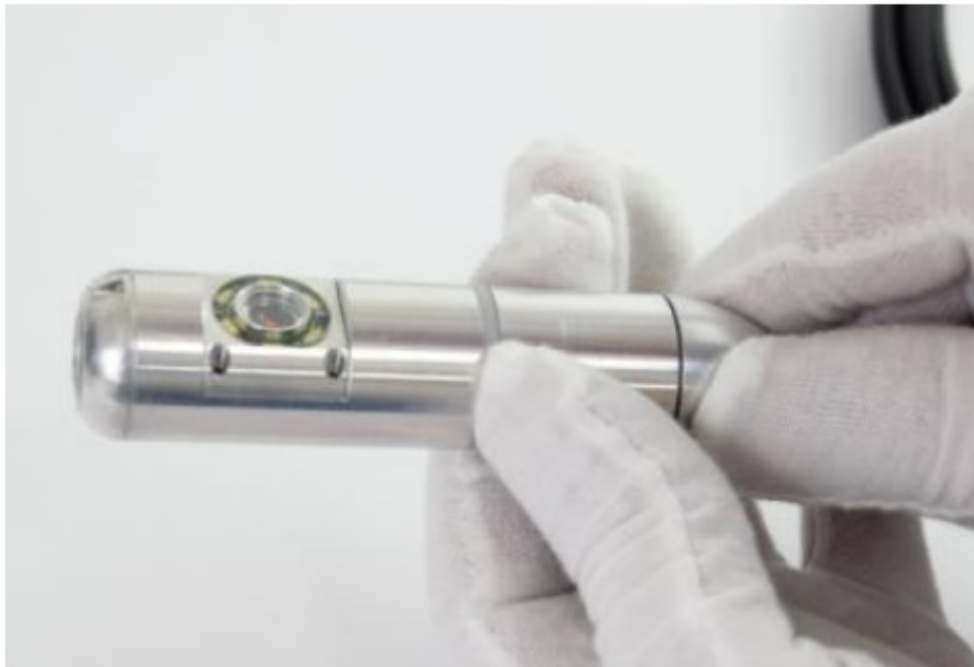


2.2 Connection

1. The hose line aviation connector is connected to the controller socket;



2. Install the camera to the connector;

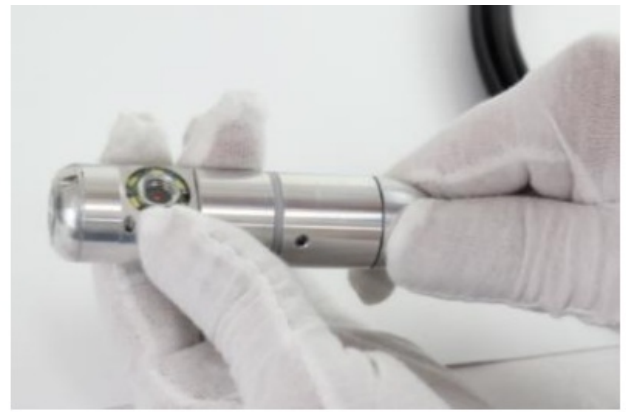
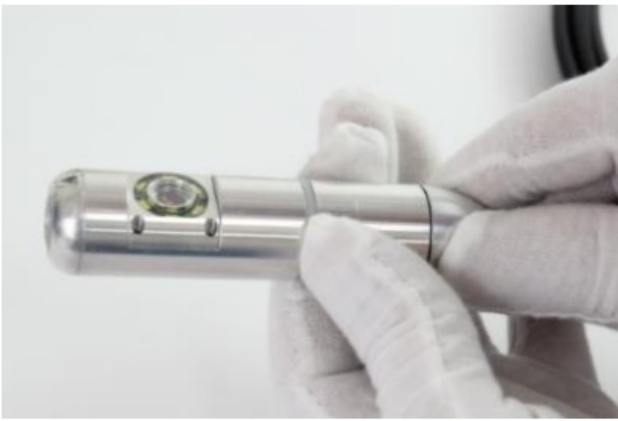


3. Install the sunshade.




Be careful:

1. Check the waterproof ring of the camera.
2. Do not hold the rotatable part when installing the camera.





2.3 Starting up

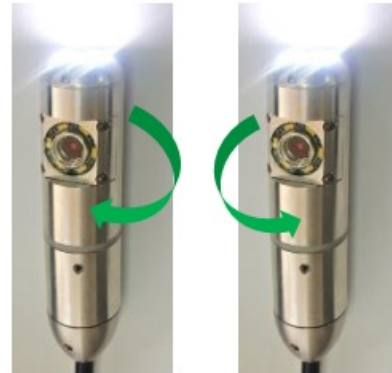
1. Starting up

Press  and hold for 3 seconds to turn on/off;



2. Camera panning

Press   panning right/left the camera;



3. Camera switching

Press   Switch the front/side cameras.



4. Adjust the light of the camera

Press these two buttons to adjust the light.

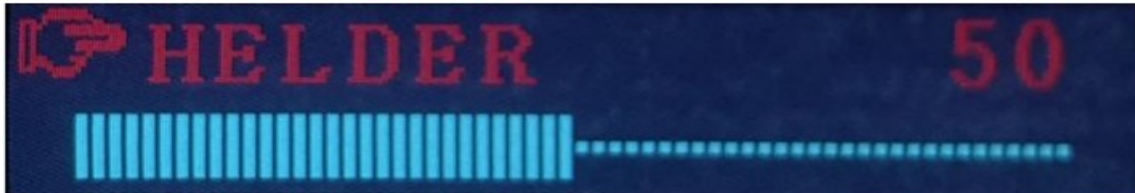


Menu

Press  Toggle Menu, Press   Set parameters.

3.1 Brightness

Adjust the display brightness.



3.2 Contrast

Adjust the display contrast.




3.3 Chromaticity

Adjust the display chroma.



Documents / Resources

	<p>pro ENGINEERS Rotating Dual-Camera Endoscope [pdf] User Manual Rotating Dual-Camera Endoscope, Camera Endoscope, Endoscope, Dual-Camera Endoscope</p>
-------------------------------------------------------------------------------------	------------------------------------------------------------------------------------------------------------------------------------------------------------------------------