



PRO DG SYSTEMS i803 Iris Plus Series Configured System Instruction Manual

[Home](#) » [PRO DG SYSTEMS](#) » PRO DG SYSTEMS i803 Iris Plus Series Configured System Instruction Manual 

PRO DG SYSTEMS i803 Iris Plus Series Configured System



Contents

- [1 Iris Plus Series](#)
- [2 PRODUCT OVERVIEWS](#)
- [3 Technical specifications](#)
- [4 IT-A 118 B](#)
 - [4.1 System configurations](#)
- [5 Documents / Resources](#)

Iris Plus Series

The new **Iris Plus Series** from **Pro DG Systems** is the perfect column-type system configuration for permanent installation, portable system and all type of point source applications where an unobtrusive visual impact is required.

The new **Iris Plus Series** is composed by the new models; **i 803** (column) and **IT-A 118 B** (subwoofer), featuring state-of-the-art Class-D amplification and a very intuitive processing for easy handling and absolute control, ready to plug in and work.

The easy interaction of its different elements makes it a versatile modular system, allowing it to be easily installed by a single person and scale it in systems with a greater number of elements.

The compact design and reduced weight of its elements make it easy to transport, which suppose great logistical savings.

The innovative versatility of **Iris Plus Series** makes it the ideal system configuration for one-person band, small bands, orchestras, corporate events, as well as holding events in places of worship and leisure, offering the possibility of creating different system configurations.

The main characteristics and technical specifications of **i 803** and **IT-A 118 B** as well as different configuration examples between them are specified below.



PRODUCT OVERVIEWS

- Ultralight and compact. 360° rotatable



- 8 x 2 . 75" full range woofer with neodymium magnets



- Coupling hardware with angulation



- Extreme versatility for quick configurations



Coupling hardware with angulation available (optional), to combine several units i 803.



Extension bar to allow interaction between i 803 and IT-A 118 B.

Load capacity: 30 Kg (66.14 lbs)



T" support for two units i 803.
Load capacity: 30 Kg (66.14 lbs)



Wall mounting bracket with adjustable angulation.



Technical specifications

Technical specifications		i 803
Power Handling	1120 W peak / 560 W program / 280 W RMS (EIA 426A Standard).	
Nominal Impedance	4 Ohm.	
Average Sensitivity	98 dB / 2.83V / 1m (average of 150-16.000Hz wideband).	
Maximum SPL Calculation	/ 1m 121 dB continuous / 124 dB program / 127 dB peak.	
Frequency Range	+/-3 dB between 170 Hz – 18 kHz.	
Nominal Directivity	100° horizontal.	
Components	Eight (8) speakers of 2.75", 35W, 8 Ohm with neodymium magnet.	
Amplifier	No / Passive, it is connected to SAT output of IT-A 115 B / IT-A 118 B.	
Rigging Points	4 x M5.	

Connectors	2 NL4MP speakon.
Acoustic Enclosure	CNC fabrication in 12mm birch plywood.
Finish	Special textured black paint finish.
Grille / Hardware	1.5 mm metal grille with 0.5 mm acoustic foam + Integration cams for coupling several units in array
Dimensions	(H x W x D); 740x130x125mm (29,13"x5,12"x4,92").
Weight	4,20 Kg (9,25 lbs) net / 4,80 Kg (10,58 lbs) with packaging.

IT-A 118 B



- Compact and lightweight design



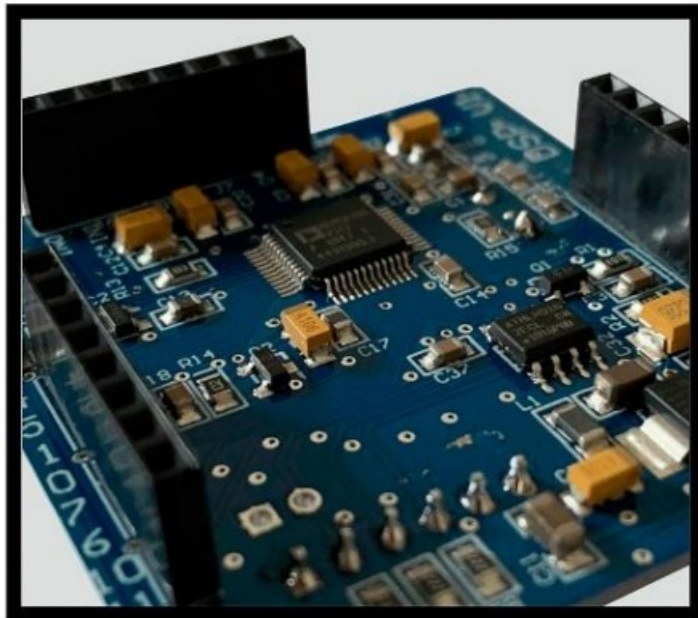
- Extreme versatility for quick configurations



- 96kHz, 24 bit DSP processor with 3 factory presets. Speakon output for SAT.



- Last generation Class-D amplifier



Technical specifications		IT-A 118 B
Power Handling	4000 W peak / 2000 W program / 1000 W RMS (EIA 426A Standard).	
Nominal Impedance	8 Ohm.	
Average Sensitivity	99 dB / 2.83V / 1m (average of 50-1000Hz wideband).	
Maximum SPL Calculation	/ 1m 125 dB continuous / 128 dB program / 131 dB peak.	

Frequency Range	+/-3 dB between 30 – 150 kHz.
Nominal Directivity	Omnidirectional.
Component	One (1) speaker of 18" with ferrite magnet, 1000 W, 8 Ohm.
Amplifier	Last generation Class-D amplifier with 2 channels, 1*1200w for Low + 1*600 w for SAT, with voltage selector. 96kHz, 24 bit DSP processor with 3 factory presets. Speakon output for SAT.
Connectors	1 XLR/combo channel with output for satellite + XLR Link.
Controls	On/off switch, volume level, Bluetooth on/off switch, TWS switch, DSP management switch and LCD display for preset selection.
Power Supply	110~220V 50/60HZ with voltage selector.
Acoustic Enclosure	CNC fabrication in 18mm birch plywood.
Finish	Special textured black paint finish.
Grille / Hardware	2 mm metal grille with 0.5 mm acoustic foam + 1 m20 pole mount adapter + 2 handles with aluminum handgrip.
Dimensions	(H x W x D); 520x715x605mm (20,47"x28,15"x23,82")
Weight	49,4 Kg (108,9 lbs) net / 50,9 Kg (112,21 lbs) with packaging.

System configurations

Iris Plus 1

Column-type system of 1280 W RMS. Composed by:

1 unit i 803 + 1 unit IT-A 118 B



Iris Plus 2

Column-type system of 2560 W RMS. Composed by:
2 units i 803 + 2 units IT-A 118 B



Ideal one-person band, small bands, orchestras, corporate events, as well as holding events in places of worship and leisure, offering the possibility of creating different system configurations.

system configurations







www.prodgsystems.com



Documents / Resources

 <p>Iris Plus Series Configured systems</p>	<p>PRO DG SYSTEMS i803 Iris Plus Series Configured System [pdf] Instruction Manual i 803, IT-A 118 B, i803 Iris Plus Series Configured System, Iris Plus Series Configured System, Configured System</p>
 <p>Iris Plus Series Configured systems</p>	<p>PRO DG SYSTEMS i803 Iris Plus Series Configured System [pdf] Owner's Manual i 803, IT-A 118 B, i803 Iris Plus Series Configured System, Iris Plus Series Configured System, Configured System</p>