

PRISM+
Sentinel
Smart Lock



PRISM plus Sentinel Smart Lock User Manual

[Home](#) » [PRISM plus](#) » PRISM plus Sentinel Smart Lock User Manual 

Contents

- [1 PRISM plus Sentinel Smart Lock](#)
- [2 Preparation](#)
- [3 Installation](#)
- [4 Warranty](#)
- [5 Introduction](#)
- [6 Pairing Instructions](#)
- [7 Reset Instructions](#)
- [8 Documents / Resources](#)
 - [8.1 References](#)
- [9 Related Posts](#)

PRISM+

PRISM plus Sentinel Smart Lock



Product Information

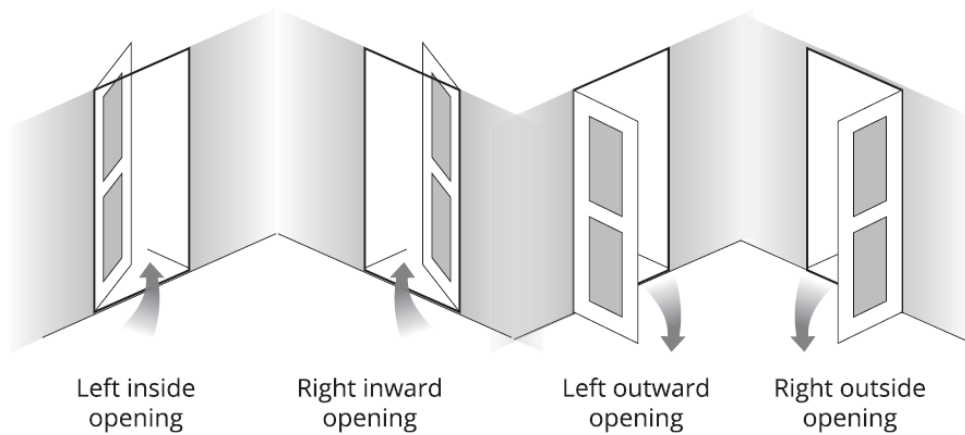
The Sentinel is a cutting-edge security device designed to protect your home or office. It offers advanced features such as motion detection, night vision, and two-way audio communication.

Product Usage Instructions

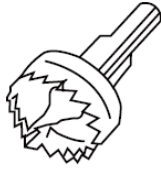
Preparation

1. Confirm The Opening Direction

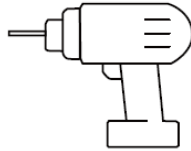
This smart lock is suitable for inward and outward opening doors and both left and right side handing.



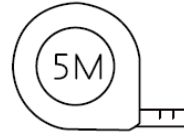
2. Tools required



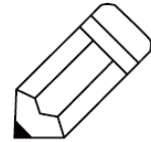
Hole saw (1")



Electric drill

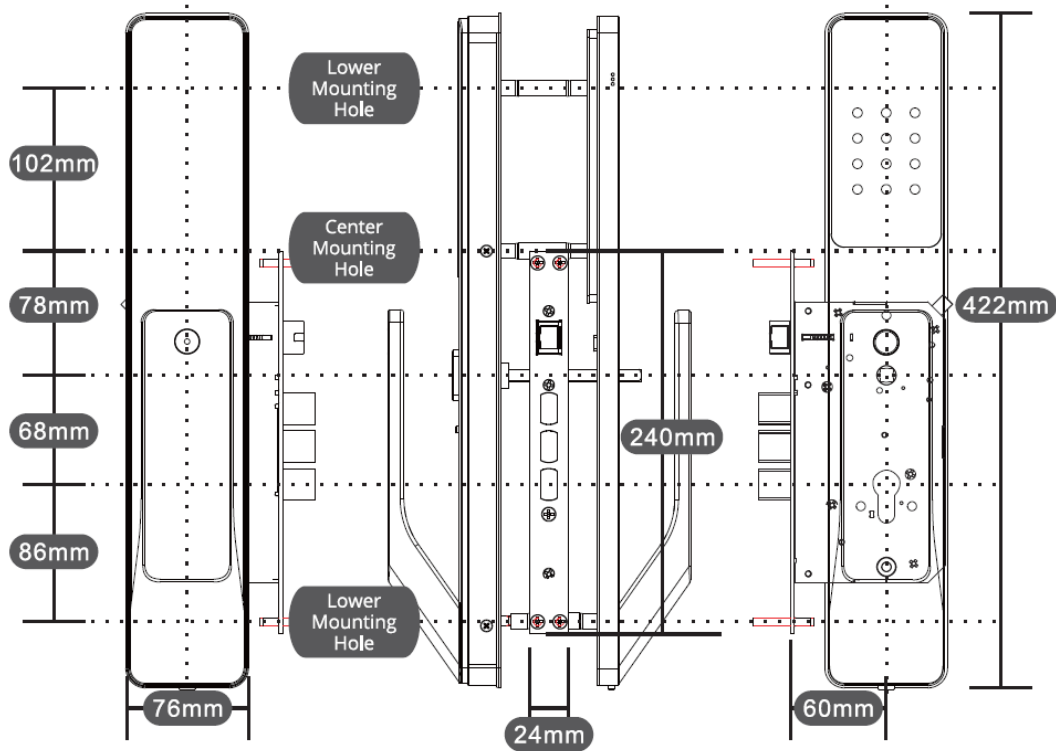


Tape measure



Pencil

3. Installation Dimensions



The standard configuration is for a 24x240mm electronic modrise.

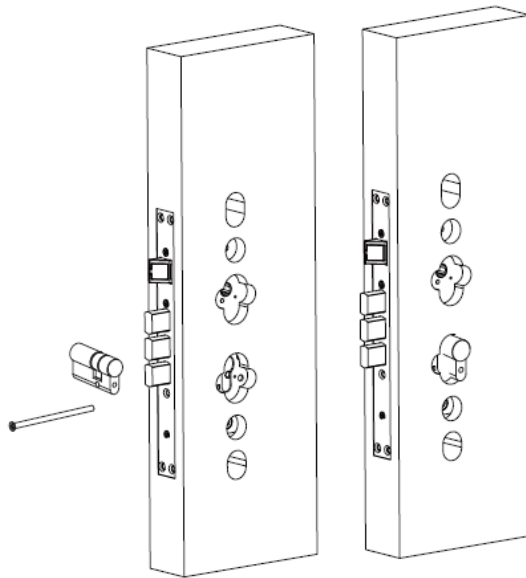
Place the cutting guide on the door before you drill.

Ensure that you choose the correct screw length before mounting the lock on the door.

Installation

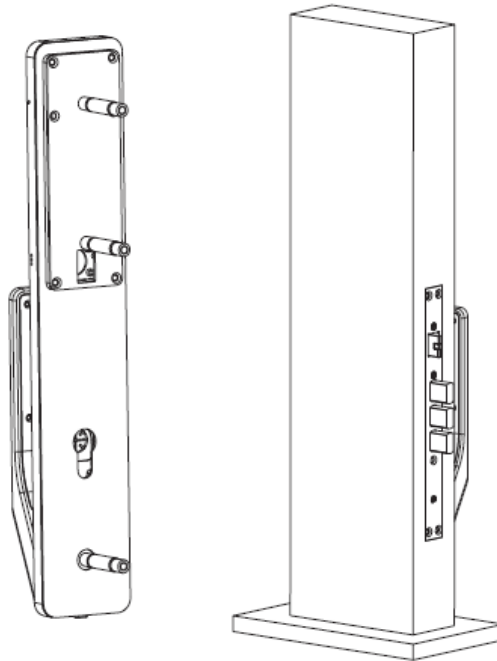
1. Mortise Cassette Installation

- Install the mortise cassette first and mount it firmly inside the door pocket.
- Use the provided M5x70 screw to secure the lock cylinder.



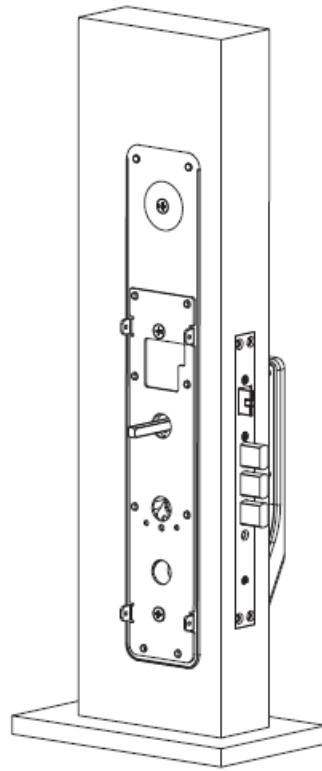
2. Front Panel Installation

- a. Screw the 3 standoffs into the front panel.
- b. Feed the data cable through the door into the back of the door.



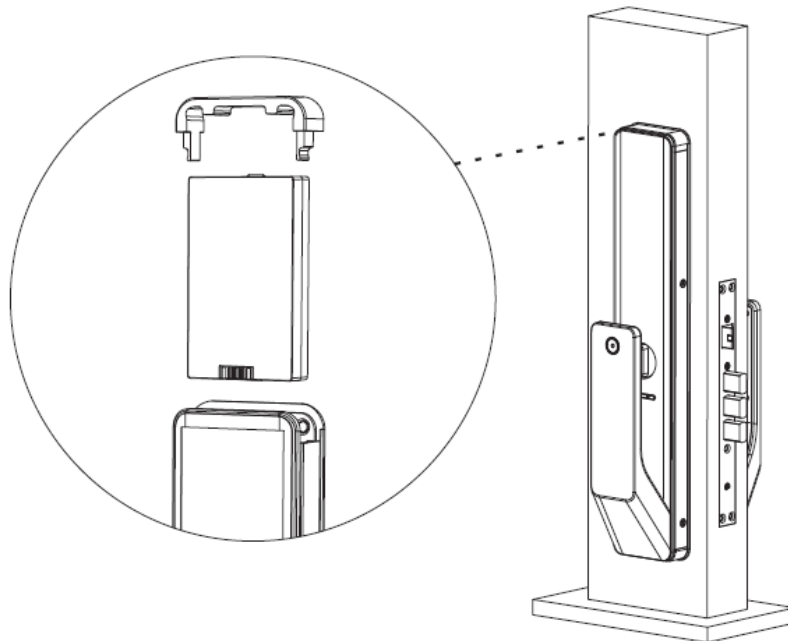
3. Rear Panel Installation

- a. Connect the data cable to the rear panel.
- b. Place it against the door surface and secure it from the side.



4. Battery Installation

- a. Insert the battery pack into the panel with the electrical slot facing you.
- b. Close the battery cover with the provided cap.



5. Final Checklist

- a. After the installation is complete try to unlock the door with a knob to see if the mechanical connection is normal.
- b. Try to use the passcode (123456#) and see if the keypad wakes up.
- c. Pair the lock to the mobile app before usage.

Warranty

1. We offer a comprehensive 2-year warranty from the date of purchase and installation.

2. Warranty is void if:
 - a. The product is not installed by an authorized PRISM+ installer.
 - b. The product is not used with a spring-loaded door closer.
 - c. Failure to use the product according to the instruction manual.
 - d. Damage caused by external factors such as natural causes and water ingress.
3. For products out of warranty, a reasonable fee will be charged for repair and maintenance services.
4. Our company deserves the final right of interpretation and is subject to change without prior notice.

Introduction

Product Introduction

1. Please read this manual carefully before installation and use of the product.
2. Failure to abide by these instructions may lead to issues that will void your warranty. PRISM+ will not be held responsible for any injuries and problems arising from such issues.
3. Please ensure that this product is installed only by an authorized PRISM+ installer.

Door Compatibility Guide

1. Door Thickness: 40-60mm
2. Door Handedness: Right and Left side opening.
3. Direction of Opening: Inwards and Outwards

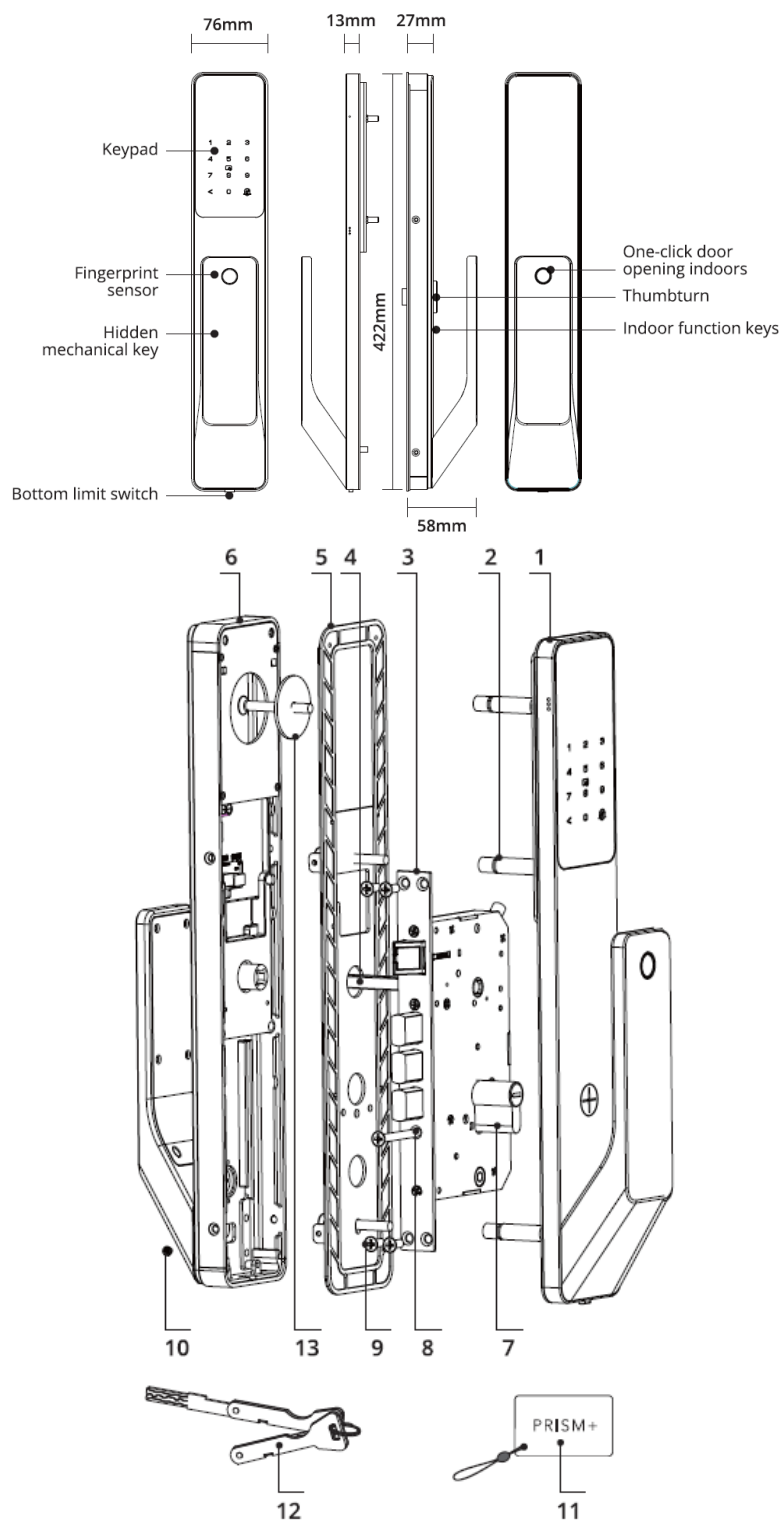
Product Setup Instructions

You are required to set up the administrator password of the PRISM+ Sentinel via the PRISM+ Connect App.

Unlocking Methods			
Fingerprint	Keypad	PRISM+ Connect App	Card
If PRISM+ Sentinel battery is too low to function:			
A Type-C USB cable can be inserted to jumpstart the device.			

Once the product is installed, please sync your device to your PRISM+ Connect App to set different modes of entry and to change lock settings.

Product Anatomy



1. Front panel (1 pc)
2. Standoffs (3 pcs)
3. Lock body (1 item)
4. Base plate (1 item)
5. Sealing silicone pad (1 pc)
6. Rear panel (1 pc)
7. Lock cylinder (1 pc)
8. Lock core fixing screw (1 pc)
9. Lock body fixing screws (4 pcs)
10. Rear panel fixing screws (2 pcs)

11. Key card (2 pcs)
12. Mechanical keys (2 pcs)
13. Rear plate solid (1 pc)

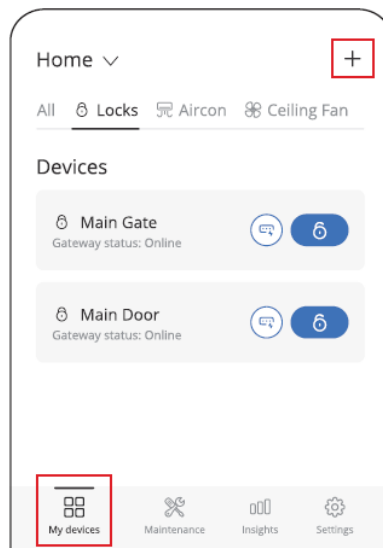
Door Compatibility

The default accessory kit is suitable for door thicknesses of 40-60mm.

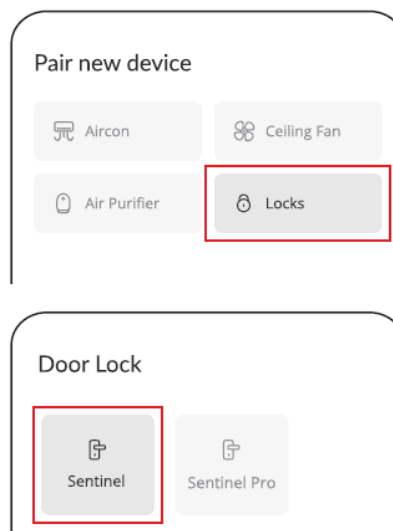
Note: Product size and layout may differ slightly due to design and product updates. The pictures used in this guide are for reference only.

Pairing Instructions

1. Touch the keypad to wake up the lock. Select the '+' icon on the top right of the 'My devices' screen.



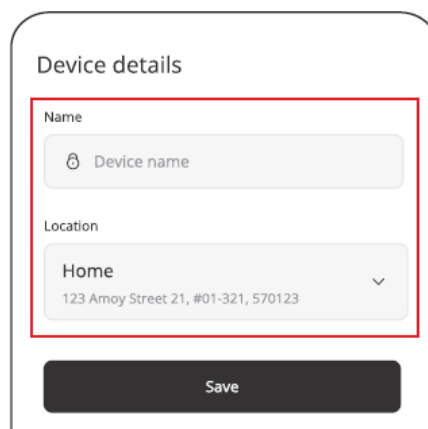
2. Select, 'Locks' > 'Sentinel'.



3. Tap 'Continue', follow the on-screen instructions, and wait for your lock to connect.

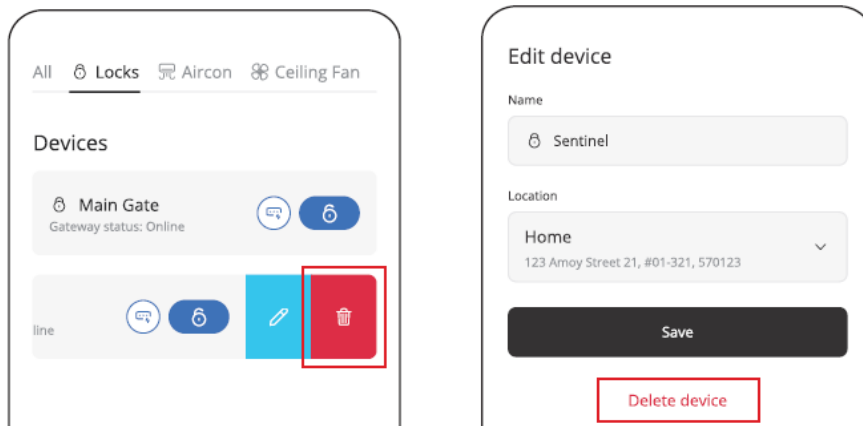


4. Name your device (eg. Home), and then set the location to your current location. Tap 'Save' to complete.



Delete Device Instructions

There are 2 ways to delete the device:



Method 1: Under 'My devices', swipe left on 'Sentinel', and select 'Delete'.

Method 2: Under 'My devices', select 'Sentinel'. Select the settings icon on the top right corner, and select 'Edit device'. Select 'Delete device'.

Reset Instructions

1. Press and hold the lock & unlock buttons on the back panel of the lock together till you hear "Please input

initialization passcode”.

2. Enter 000# and the lock will be restored to factory settings.

FCC Statement

Changes or modifications not expressly approved by the party responsible for compliance could void the user's authority to operate the equipment. This equipment has been tested and found to comply with the limits for a Class B digital device, under Part 15 of the FCC Rules. These limits are designed to provide reasonable protection against harmful interference in a residential installation. This equipment generates uses and can radiate radio frequency energy and, if not installed and used by the instructions, may cause harmful interference to radio communications. However, there is no guarantee that interference will not occur in a particular installation. If this equipment does cause harmful interference to radio or television reception, which can be determined by turning the equipment off and on, the user is encouraged to try to correct the interference by one or more of the following measures:

- Reorient or relocate the receiving antenna.
- Increase the separation between the equipment and receiver.
- Connect the equipment to an outlet on a circuit different from that to which the receiver is connected.
- Consult the dealer or an experienced radio/TV technician for help.

This device complies with part 15 of the FCC rules. Operation is subject to the following two conditions (1)this device may not cause harmful interference, and (2) this device must accept any interference received, including interference that may cause undesired operation. This equipment complies with FCC radiation exposure limits set forth for an uncontrolled environment. This equipment should be installed and operated with a minimum distance of 20cm between the radiator & your body.

FAQs

Q: How do I reset the Sentinel to factory settings?

A: To reset the Sentinel, press and hold the reset button for 10 seconds until you hear a beep, indicating successful reset.

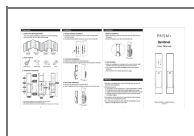
Q: Can I access live footage from the Sentinel remotely?

A: Yes, you can view live footage from the Sentinel using the dedicated app on your smartphone as long as it is connected to the internet.

Q: What is the maximum range of motion detection for the Sentinel?

A: The motion detection range of the Sentinel is approximately [Range] meters, depending on environmental factors.

Documents / Resources



[PRISM plus Sentinel Smart Lock \[pdf\] User Manual](#)

2BH9C-LPPSLXASG, 2BH9CLPPSLXASG, LPPSLXASG, Sentinel Smart Lock, Sentinel, Smart Lock, Lock

References

- [User Manual](#)

Manuals+, Privacy Policy

This website is an independent publication and is neither affiliated with nor endorsed by any of the trademark owners. The "Bluetooth®" word mark and logos are registered trademarks owned by Bluetooth SIG, Inc. The "Wi-Fi®" word mark and logos are registered trademarks owned by the Wi-Fi Alliance. Any use of these marks on this website does not imply any affiliation with or endorsement.