



Princeton Tec Charge X MPLS Helmet Light Instruction Manual

[Home](#) » [Princeton Tec](#) » Princeton Tec Charge X MPLS Helmet Light Instruction Manual 

Contents

- [1 Princeton Tec Charge X MPLS Helmet Light](#)
- [2 Battery Installation](#)
- [3 Switch Operation](#)
- [4 Troubleshooting](#)
- [5 WARRANTY](#)
- [6 Documents / Resources](#)
 - [6.1 References](#)



Princeton Tec Charge X MPLS Helmet Light



Battery Installation

See Figure 1

CR123 Lithium Battery or (1) AA Lithium or (1) AA Alkaline. Lithium is preferred for better performance. To install a battery, grip the light in either hand with the battery door facing straight up. Slide the battery door latches forward with your thumb and use your free hand to open the battery door. With a battery installed, spring tension will make this operation possible with one hand. To close the battery door, push it closed and then slide the latch toward you to lock.

Princeton Tec cares about the environment and recommends recycling batteries. For more information about battery recycling, please go to:

<https://www.epa.gov/recycle/used-household-batteries>.

WARNING!

- Always remove drained batteries immediately.
- Remove batteries during long periods of storage.

Switch Operation

See Figure 2

Charge X ships with the red light selected first.

- Press 1x: Red
- Press 2x: Green
- Press 3x: Blue
- Press 4x: Off
- Press & Hold from color mode: White 80%
- Press & Hold from white: Dimming
- Next Press: Off
- Press & Hold 2s from off IR
- Press & Hold 1s: IR strobe
- Press & Hold 5s: Lock / unlock
- Lock indicated by 3 flashes from the red LED. While locked, and press yields one red blink

Programming Mode

See Figure 3

The Charge X ships with the red light selected first. The user can program the order in which the 3 color LEDs activate.

- Press & Hold 8s from off Programming mode.
- The current color LED will blink rapidly.
- 1x press: cycle through red, green, or blue.
- Press & Hold 8s on the desired color: locks in selection & exits mode.

Troubleshooting

If the Charge X fails to light:

- Check the battery for proper installation.
- Replace the battery if proper installation is confirmed.
- USA– International 1-Year Warranty

WARRANTY

Princeton Tec warrants this product to be free from defects in workmanship and materials under normal use for one year. This warranty covers all of the parts of the product except batteries. This warranty does not cover deterioration due to normal wear or damage due to misuse, alteration, negligence, accidents, or unauthorized repair. Princeton Tec will repair or replace parts that are defective in workmanship or materials. Your authorized Princeton Tec Dealer and Princeton Tec are the only facilities authorized to repair the product.

After (3) unsuccessful attempts (within the warranty period) to repair the product, you have the right to elect replacement of the product or a refund of the purchase price less allowance for use of the product. **NO INCIDENTAL OR CONSEQUENTIAL DAMAGES ARE INCLUDED IN THIS WARRANTY.** (Some states do not allow the exclusion or limitation of incidental or consequential damages, so the above limitations or exclusions may not apply to you.) This warranty gives you specific legal rights, and you may also have other rights that vary from state to state. Princeton Tec reserves the right to change product specifications without notice.

FOR CALIFORNIA RESIDENTS

WARNING: This product contains Bisphenol A (BBPA a chemical known to the State of California to cause birth defects or other reproductive harm.

Return Policy

If your light fails to operate, follow these simple steps:

1. Check batteries. Replace if necessary.
2. To send your light in for repair or replacement, first contact Princeton Tec customer service at 1- [800-257-9080](tel:800-257-9080) to request an RMA number.
3. Please have your light model, date of purchase, and a brief description of the fault you are experiencing. No warranty repairs will be accepted without an RMA number.
4. Return the light to Princeton Tec, PO Box 8057 Trenton NJ 08650. Postage due and freight collection items will not be accepted.
5. Upon receipt, your light will be processed in about two weeks. Please allow additional time for return transportation from NJ.

Figure 1 – Battery Installation



Figure 2 – Switch Operation

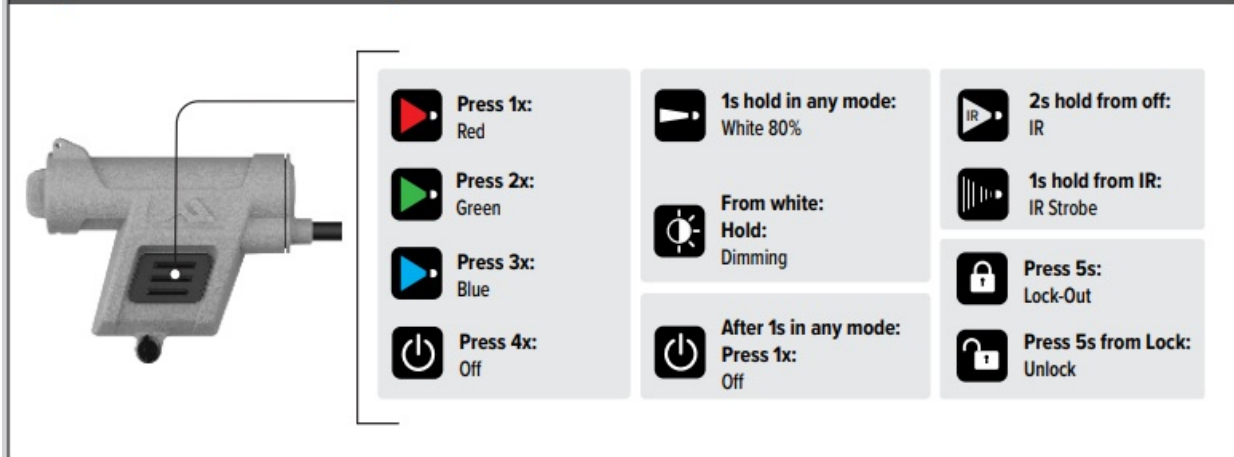


Figure 3 – Programming Mode

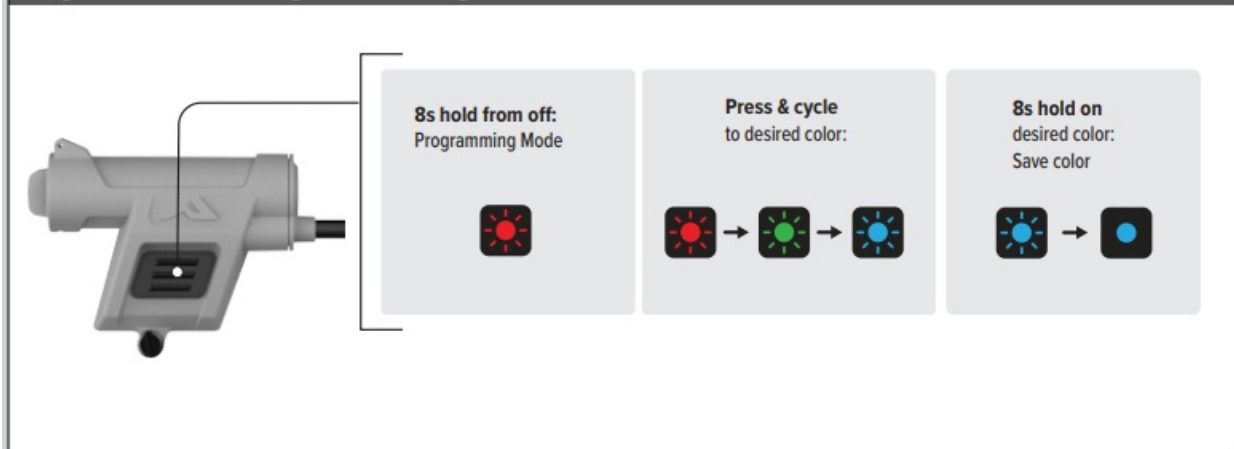


Figure 3 – Programming Mode

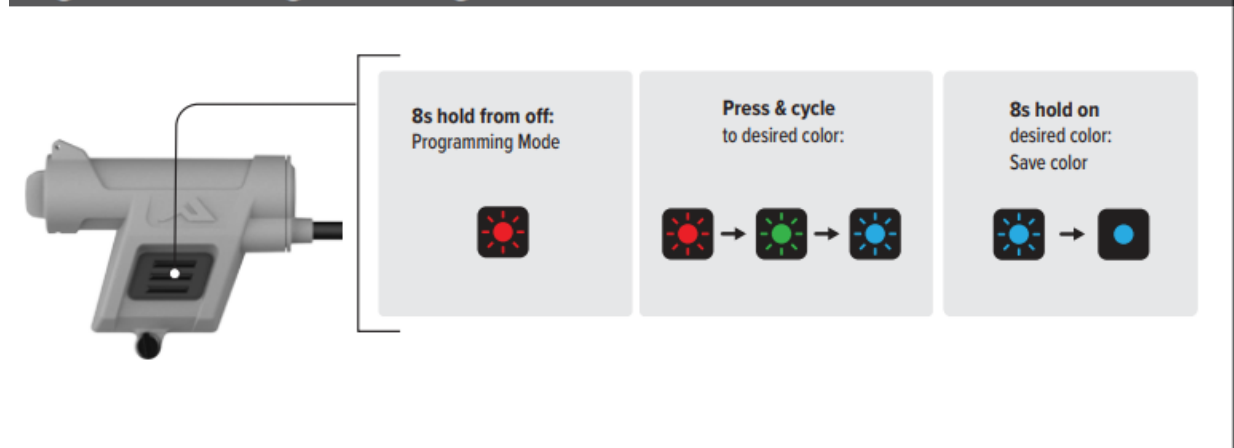


Figure 2 – Switch Operation

Figure 3 – Programming Mode

Figure 4 – ARC Rail Installation

Charge X is designed to attach directly to the ARC Rail–Helmet Rail System. Charge X can be mounted to either the left or right helmet rail. Using a flathead screwdriver, back the set screw out approximately 5 turns, then slide the Charge dovetail into the open end of the helmet rail. The spring-loaded ball bearing will engage detents. When the light is situated to your preference, hand-tighten the set screw to secure Charge X.

Figure 5 – MOLLE Mount

Slide the clip inside any strap position, and pinch the MOLLE strap to hook the lower end of the metal clip onto the strap.

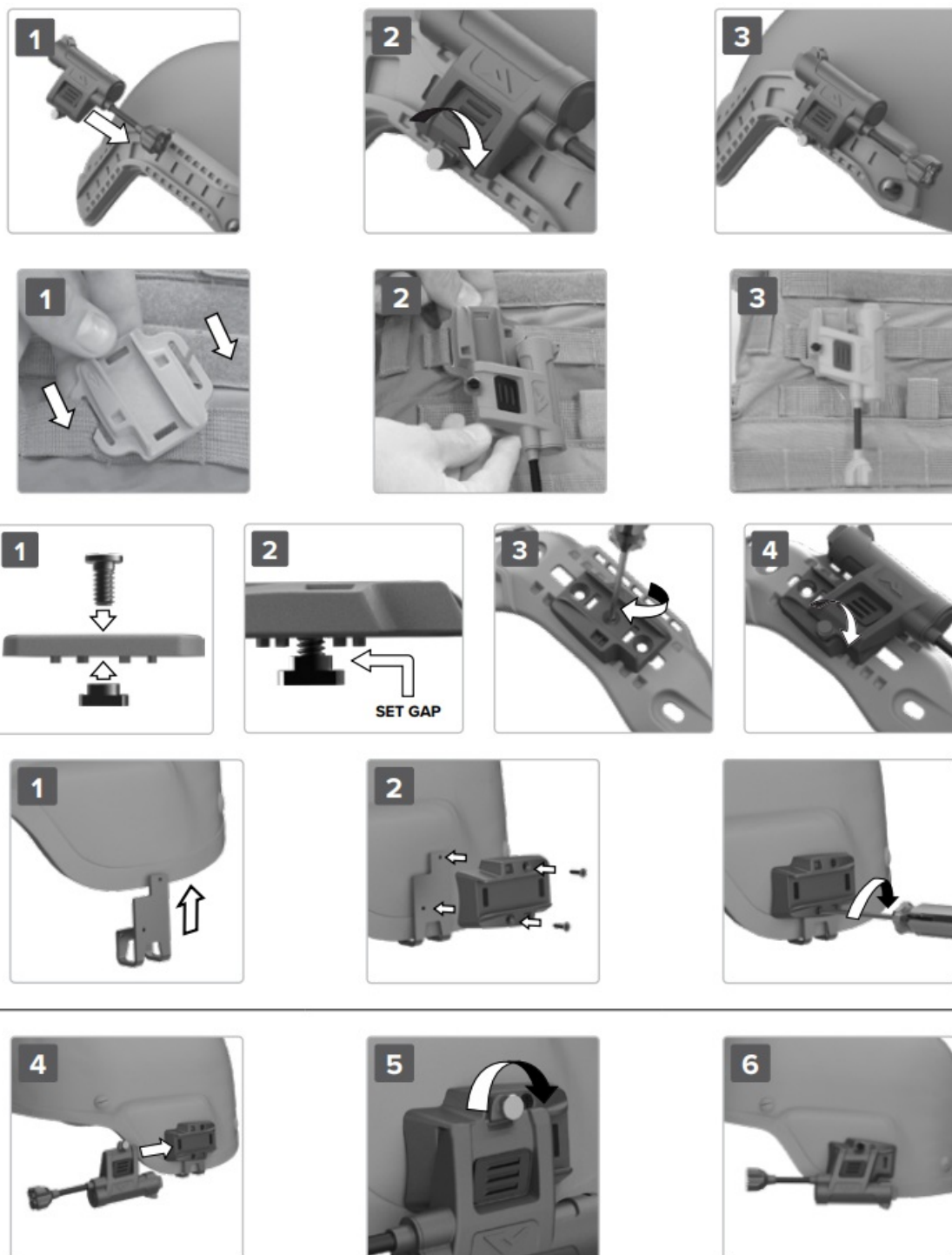
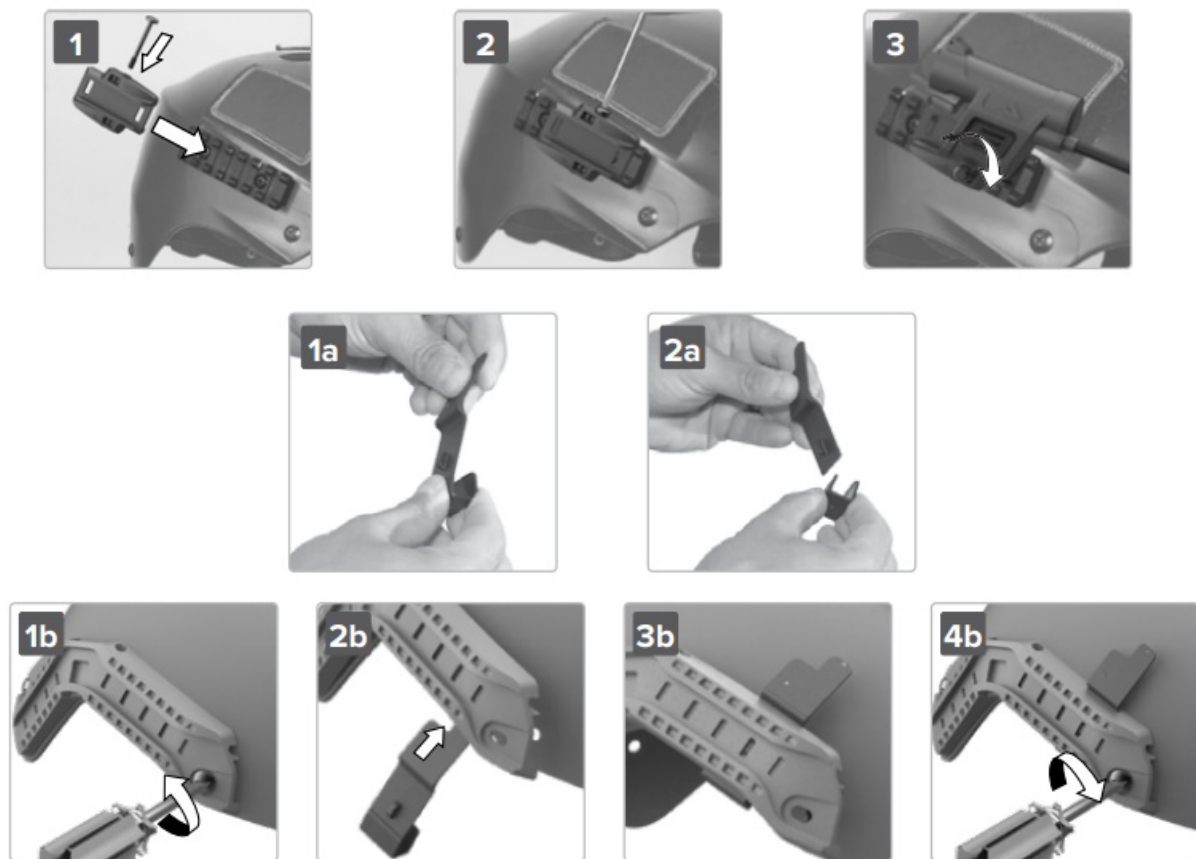


Figure 6 – M-LOK® Mount

Insert screw and T-nut into M-LOK® mount. The “gap” must be slightly greater than the thickness of the mounting surface. Slide mount onto M-LOK® rail and tighten with a screwdriver.

Figure 7 – MICH Mount Installation



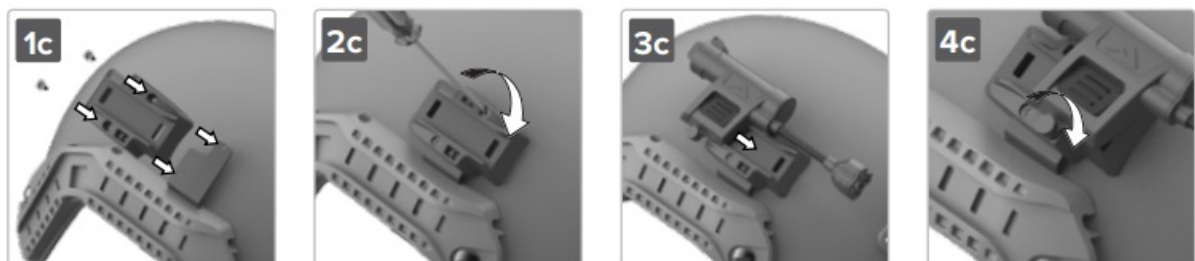
Back the screw out so the end of the screw is flush with the metal U-clip. Slide the exposed U-clip over the bottom edge of your helmet with the metal clip on the inside and the plastic base exposed on the outside of your Helmet. Holding the Mount firmly upward, tighten the center-slotted screw until it stops.

Figure 8 – Picatinny Rail Mount

Remove the center through screw from the side of the Picatinny base mount. Slide Picatinny to desired position and insert side locking screw aligning with any slot in Picatinny rail and tighten to clamp in place. DO NOT OVERTIGHTEN this screw.

Figure 9 – (ABR) Above Rail Mount


- A. If using Charge X ABR on a ballistic helmet, skip to step B. For use with nonballistic helmets, begin by snapping off an unneeded portion of the ABR mount by hand or with a pair of pliers, and discarding the smaller 'hook' portion.






- B. Loosen or remove the front rail screw, and slide ABR into the desired position beneath the rail. Retighten the front rail screw.
- C. Select Charge X mount and secure with included machine screws, gently tightening with a Phillips screwdriver. Install Charge X and tighten the set screw onto the mount.

PO Box 8057, Trenton, NJ 08650
Phone: [609-298-9331](tel:609-298-9331)
Fax: [609-298-9601](tel:609-298-9601)
princetonotec.com
2024 Princeton Tec

Documents / Resources

	<p>Princeton Tec Charge X MPLS Helmet Light [pdf] Instruction Manual Charge X MPLS Helmet Light, MPLS Helmet Light, Helmet Light, Light</p>
---	---

References

-  [Princeton Tec – Proudly made in the USA since 1975](#)
-  [U.S. Environmental Protection Agency | US EPA](#)
-  [Used Household Batteries | US EPA](#)
- [User Manual](#)

[Manuals+](#), [Privacy Policy](#)

This website is an independent publication and is neither affiliated with nor endorsed by any of the trademark owners. The "Bluetooth®" word mark and logos are registered trademarks owned by Bluetooth SIG, Inc. The "Wi-Fi®" word mark and logos are registered trademarks owned by the Wi-Fi Alliance. Any use of these marks on this website does not imply any affiliation with or endorsement.