



Primeway D1n91XEhSTL Pw710Mn Twin Bucket Rotating Spin Mop User Manual

[Home](#) » [Primeway](#) » Primeway D1n91XEhSTL Pw710Mn Twin Bucket Rotating Spin Mop User Manual 

Easy Mop



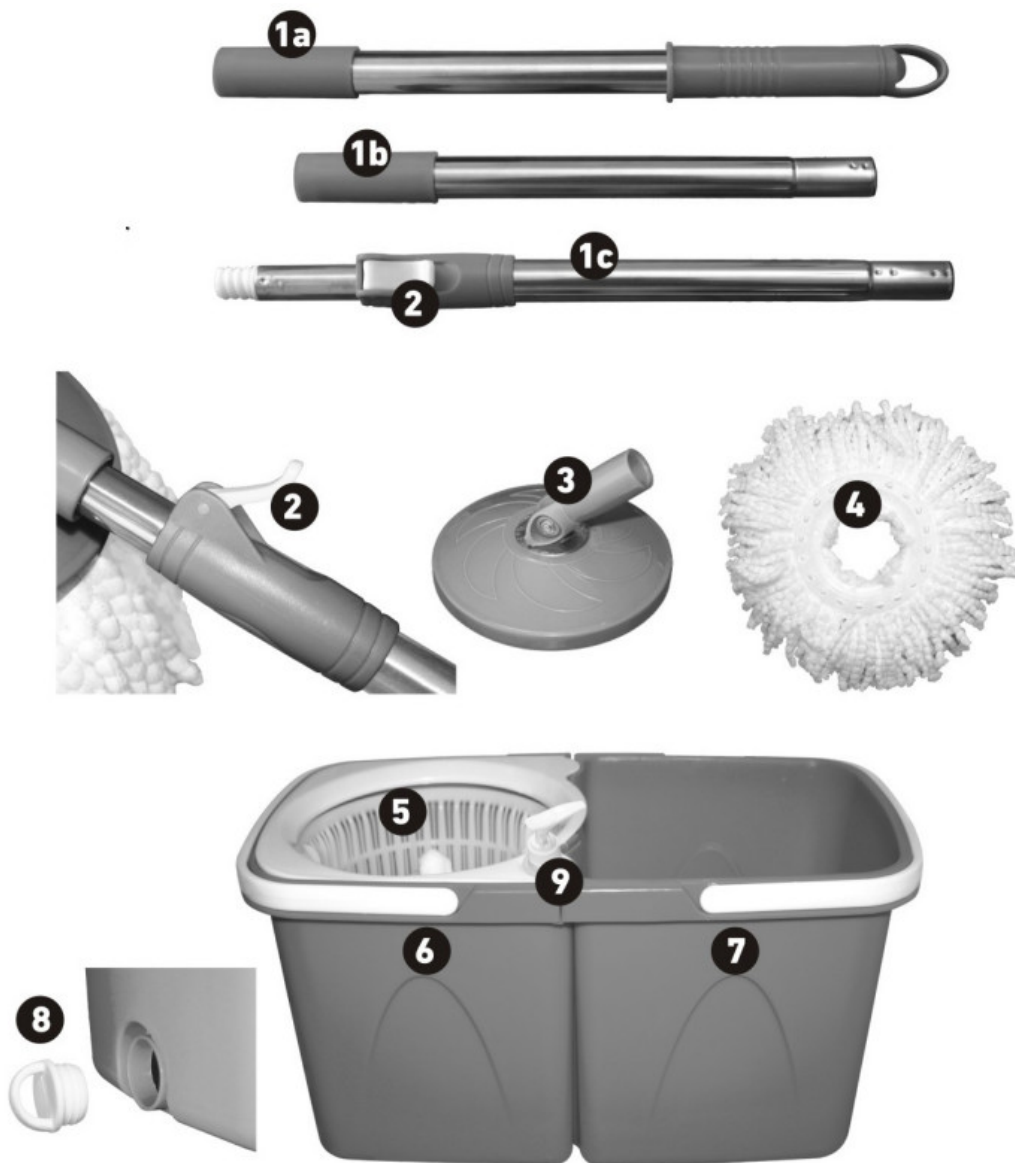
**D1n91XEhSTL Pw710Mn Twin Bucket Rotating Spin Mop
User Manual**



Contents

- 1 [D1n91XEhSTL Pw710Mn Twin Bucket Rotating Spin Mop](#)
- 2 [ASSEMBLY](#)
- 3 [USAGE](#)
- 4 [CLEANING AND STORAGE](#)
- 5 [Documents / Resources](#)

D1n91XEhSTL Pw710Mn Twin Bucket Rotating Spin Mop



1. Pole 1a, 1b and 1c – connect together to form a handle
2. Release Lever – activates spin washing and spin drying action, as well as the telescopic handle
3. Mop Base – features 360-degree swivel design
4. Mop Head – made of ultra absorbent micro fiber
5. Spinning Basket – spins to wring out the mop
6. Water Collecting Bucket – collects the water when drying the mop
7. Water Bucket – holds the soapy water
8. Plug – releases the dirty water that collects inside the bucket
9. Soap Dispenser – conveniently stores the liquid soap

⚠ WARNING



Children can fall into bucket and drown.

Keep children away from bucket with even a small amount of liquid.

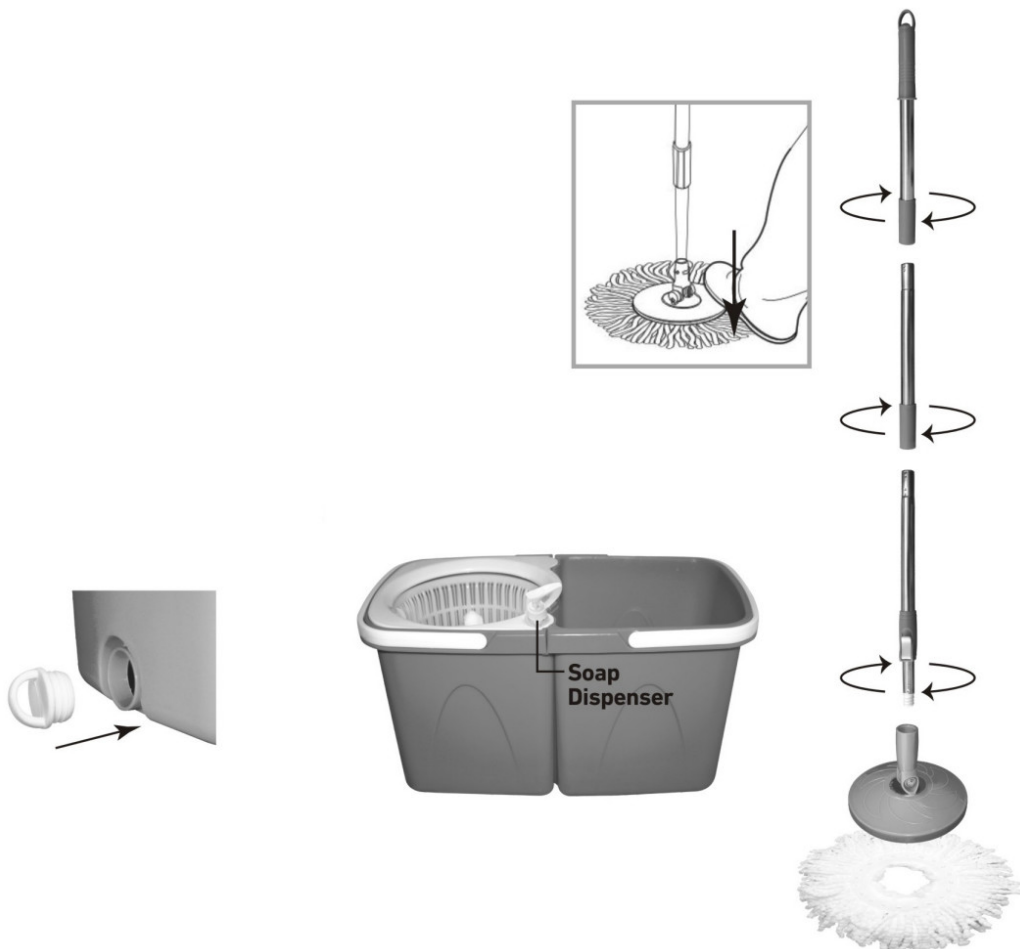
⚠ WARNING:

To avoid entanglement and possible injury, keep clothing, hair, jewelry, hands and other body parts away from the spinning basket.

ASSEMBLY

MOP

1. Put the handle together by connecting all 3 handle pieces (Pole 1a, 1b and 1c). Twist clockwise together to connect. Refer to Main Illustration on the right.
2. Next, connect the Pole (1) to the Mop Base (3). Twist clockwise to tighten.
3. Align the Pole+Mop Base assembly over the Mop Head (4). Press the assembled Pole+Mop Base into the Mop Head (4) by stepping on it with your foot until it clicks (shown on right).



BUCKETS

The buckets are interlocking. Simply slide the Water Collecting Bucket (6) with the Spinning Basket (5) into the Water Bucket (7). Press down until tight as shown below.

Make sure that the Plug (8) is inserted into the Water Collecting Bucket (6) as shown below.

SOAP DISPENSER

For your convenience we have included a Soap Dispenser (9). Unscrew the top and pour your favorite soap or cleaning solution. When needed, dispense the soap into the Water Bucket (7) by pressing down on the pump.

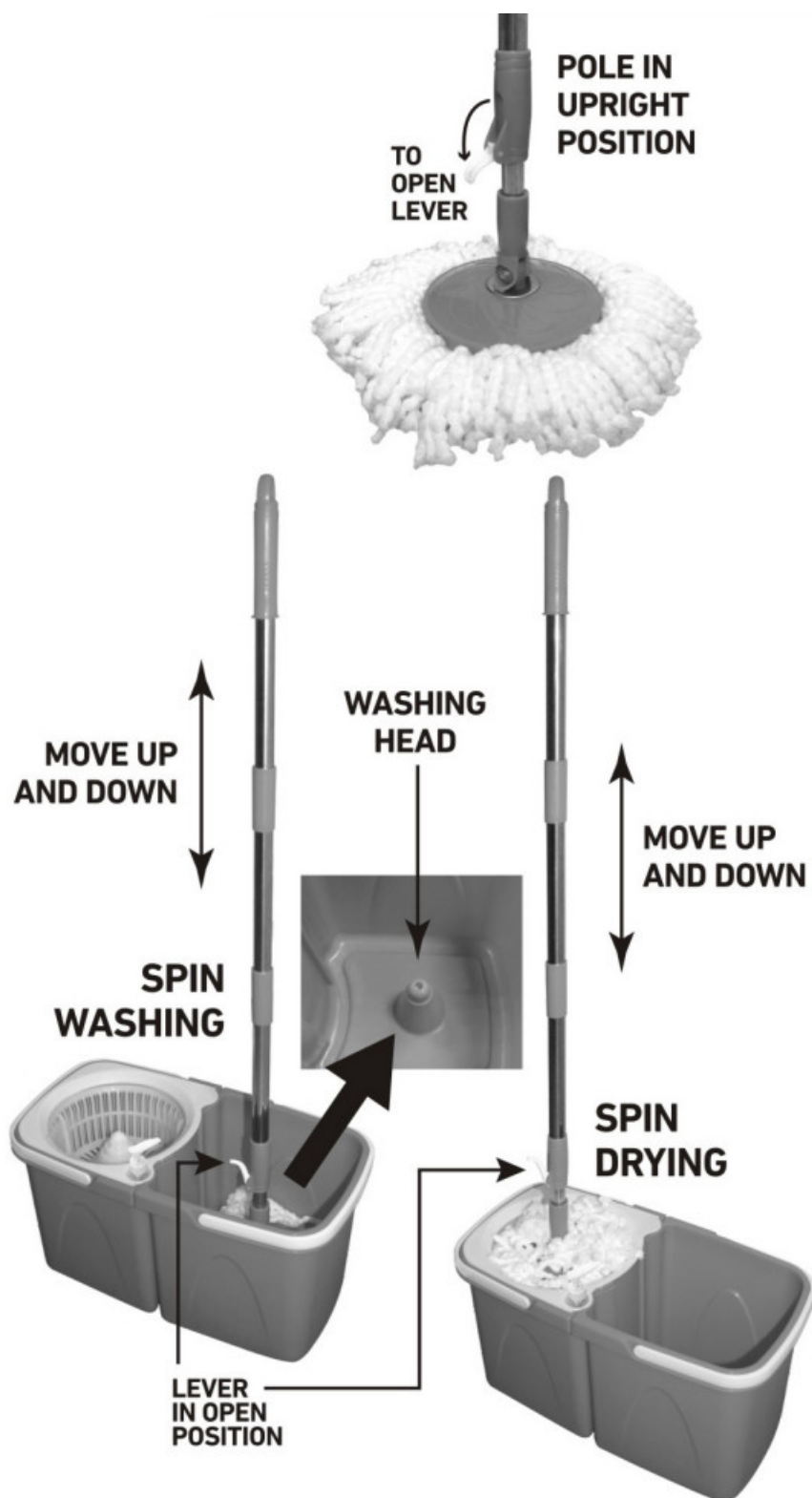
USAGE

IMPORTANT: ALWAYS MAKE SURE TO BRING THE POLE TO THE UPRIGHT POSITION (SHOWN ON RIGHT) BEFORE PLACING IN THE BUCKET FOR THE SPIN WASHING/DRYING. OPEN THE LEVER.

1. Fill the Water Bucket (7) with hot water, add soap or cleaning solution.
2. Pull down the Lever (2) to unlock the telescopic function. This will prepare the mop for spin washing and drying.

Do not lock it back.

3. While holding the mop upright (not at angle), place it in the Water Bucket (7) over the Washing Head. Next, while holding the mop by one of the plastic holding areas, move in up and down motion.
This motion will activate the spin washing action. Move it up and down several times until the mop is wet.
4. Lift the mop up and transfer onto the Spinning Basket (5). Use the same up and down motion to activate the spin drying action. The Water Collecting Bucket (6) will collect the excess water.
5. When the mop is dry, Lift it from the basket. Pull up the Lever (2) to lock the telescopic function and to prevent the handle from sliding in your hands.
6. Clean up messes with the ultra absorbent micro fiber mop
7. When ready to clean the mop, follow STEPS 3, 4+5 to wash and dry the mop.
8. Depending on the dirt level, change the water often. Disconnect the buckets.
9. Pour out the dirty water from the Water Bucket (7). Once the Water Collecting Bucket (6) becomes full, remove the plug to drain the dirty water.



CLEANING AND STORAGE

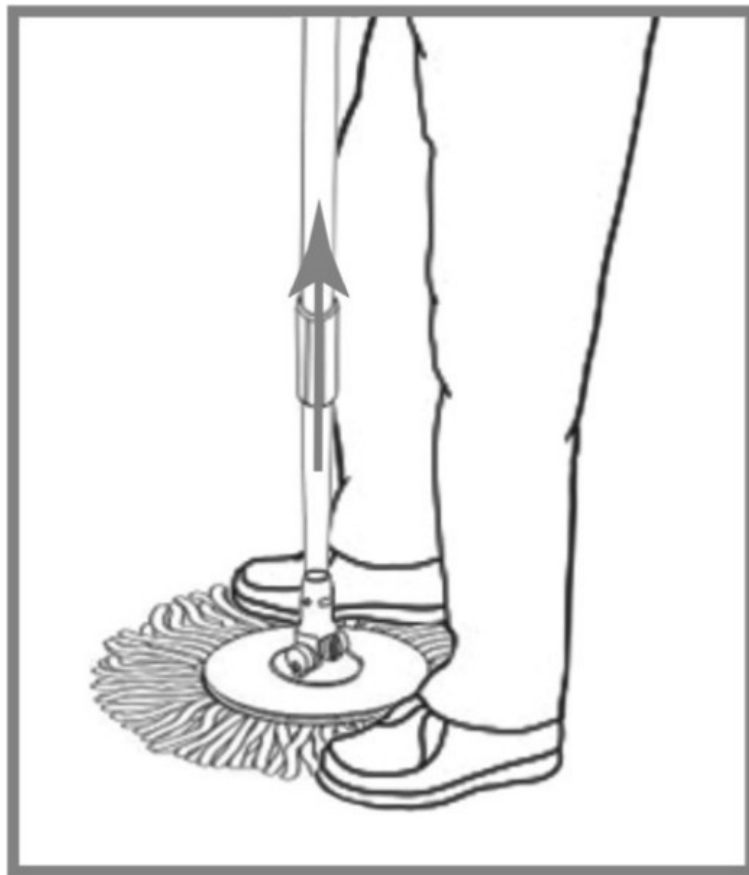
BUCKETS

1. Empty both buckets. Pour out the dirty water from the Water Bucket (7). To empty the Water Collecting Bucket (6), remove the plug to drain the dirty water.
2. Rinse both buckets with clean water to wash off the residue. Do not use any abrasive cleaners when cleaning the buckets.
3. Always remove the Plug (8) from the Water Collecting Bucket (6) first. Then, place one bucket inside of another one for compact storage, as shown on right.



MOP

1. To remove the Mop Head (4) from the Mop Base (3) place the mop in front of you and hold the mop's white bristles down with both feet. Place feet on both sides of the mop as shown on right.
Do not step on the white plastic ring. Grab onto the lower part of the handle and pull up. This should release the Mop Head (4).
2. The mop head is machine washable, place in dryer if needed, on low heat.



Easy Mop

Documents / Resources



[Primeway D1n91XEhSTL Pw710Mn Twin Bucket Rotating Spin Mop](#) [pdf] User Manual
D1n91XEhSTL Pw710Mn Twin Bucket Rotating Spin Mop, D1n91XEhSTL, Pw710Mn Twin Bucket Rotating Spin Mop, Bucket Rotating Spin Mop, Rotating Spin Mop, Spin Mop