

PRIME-LINE 9901 Front Door Handle Set



# PRIME-LINE 9901 Front Door Handle Set Installation Guide

[Home](#) » [Prime-Line](#) » PRIME-LINE 9901 Front Door Handle Set Installation Guide 

## Contents

- [1 PRIME-LINE 9901 Front Door Handle Set](#)
- [2 Product Information](#)
- [3 Installation Instructions](#)
- [4 FAQ](#)
  - [4.1 Installation Instruction](#)
- [5 Documents / Resources](#)
  - [5.1 References](#)

## PRIME-LINE

### PRIME-LINE 9901 Front Door Handle Set



## Product Information

### Specifications

- Applicable door thickness: 35-45mm

## Installation Instructions

### Tools Required for Installation

- Phillips Screwdriver
- Measuring Tape
- Electric Drill
- 2Hole Boring Saw
- 1 Drill Bit
- Chisel

### Parts in the Box

- Exterior Panel
- Handle
- Interior Door Lever
- Thumb Knob
- Deadbolt Latch
- Entry Door Latch
- Striking Plate A (use for Deadbolt Latch)
- Striking Plate B (use for Entry Door Latch)
- Striking Plate Box A (use for Deadbolt Latch)
- Striking Plate Box B (use for Entry Door Latch)
- Fixing Ring
- Gasket
- Screw A(20mm) 8pcs
- Screw B(45mm) 2pcs
- Screw C(35mm) 3pcs
- Hexagon Wrench

### Drill Holes

If the door is pre-drilled, skip to the “Adjust the Deadbolt Latch” section. For non-pre-drilled doors or replacements:

- Fold the template at the dotted line and tape it to the interior side of the door at a height of 34-48 inches.
- Drill two Dia. 2 holes for the lock bodies at points A1 and A2.
- Drill two Dia. 1 holes for the latches at points B1 and B2.
- Drill a Dia. 3/8 hole for the connecting column at point C.

### Adjust the Deadbolt Latch

1. Pull the block to extend the tongue.
2. Rotate down.
3. Pull the block back to retract the tongue.

### Install the Latches and Striking Plates

- Install Deadbolt Latch and Striking Plate A using Screw A and Striking Plate Box A.
- Install Entry Door Latch and Striking Plate B using Screw A and Striking Plate Box B.

## Install Exterior Lock

- Secure the handle on the exterior panel with the provided screws.

## Install Interior Lock

- Secure the thumb knob with Screw B. Ensure the locking lever is vertical.
- Secure the door lever with Screw C.
- Secure the gasket with Screw C.
- Install the connecting column at the bottom of the handle.
- Loosen the lower screw to adjust the connecting column height if needed.
- Install the fixing ring.
- Insert the locking lever into the deadbolt latch and insert the spindle into the entry door latch. Ensure the deadbolt latch tongue is retracted.

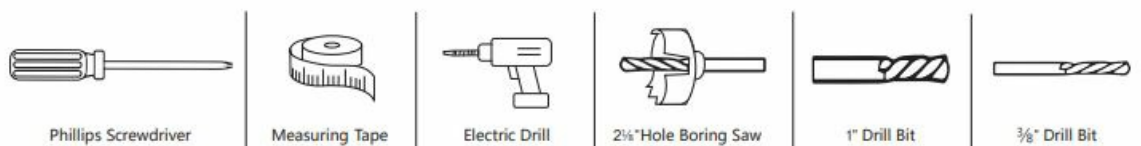
## FAQ

**Q: What is the applicable door thickness for this product?**



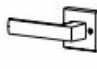














A: The applicable door thickness for this product is 35-45mm.

## Installation Instruction

### Tools Required for Installation



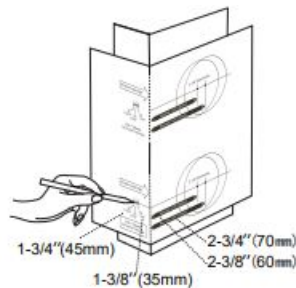
### Parts in the Box

					
Exterior Panel	Handle	Interior Door Lever	Thumb Knob	Deadbolt Latch	Entry Door Latch
					
Striking Plate A (use for Deadbolt Latch)	Striking Plate B (use for Entry Door Latch)	Striking Plate Box A (use for Deadbolt Latch)	Striking Plate Box B (use for Entry Door Latch)	Fixing Ring	Gasket
					
Connecting Column	Screw A(20mm) 8pcs	Screw B(45mm) 2pcs	Screw C(35mm) 3pcs	Hexagon Wrench	

## Drill Holes

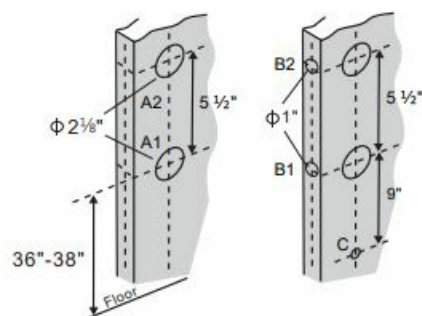
(For pre-drilled door, or replacement, please skip to Adjust the Deadbolt Latch)

- Fold the template at the dotted line and tape the template to the interior side of the door at 34-48 inch Height.

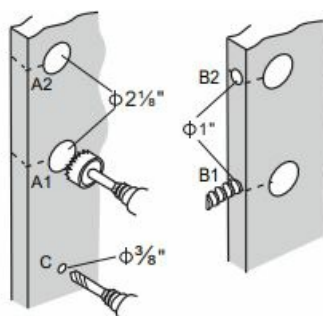


- a. Mark the  $2\frac{3}{8}$ " or  $2\frac{3}{4}$ " (60 or 70mm) hole center as A1 for the backset.
- b. Mark a point as A2,  $5\frac{1}{2}$ " above A1.
- c. Mark a point as C, about 9" below A1.
- d. Measure the thickness of the door and mark the middle point of the door thickness as B1.
- e. Mark a point as B2,  $5\frac{1}{2}$ " above B1.

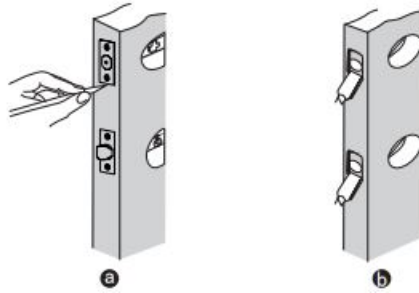
**Note:** Make sure the A1 and B1(A2 and B2) are at the same height.



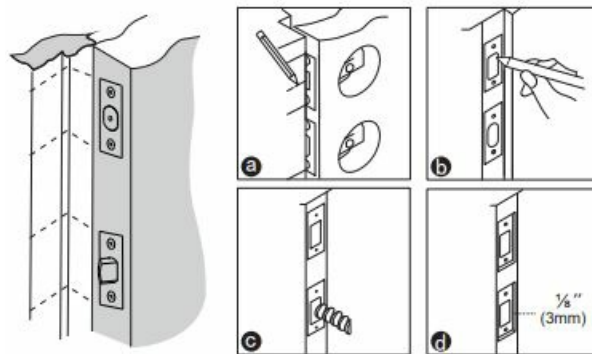
- a. Drill two Dia.  $2\frac{1}{8}$ " holes for the lock bodies at points A1 and A2.
- b. Drill two Dia. 1" holes for the latches at points B1 and B2.
- c. Drill a Dia.  $\frac{3}{8}$ " hole for the connecting column at point C.



- a. Insert the latches into the holes and mark the outline of the faceplates.
- b. Chisel 1/8" deep holes.
- 

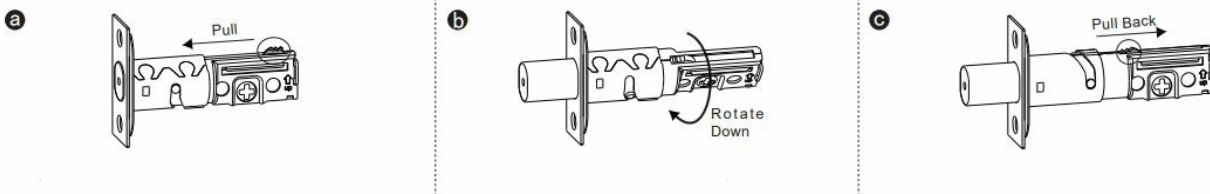


- a. Close the door with the latch installed and mark lines on the jamb as picture shown left.
- b. Align the striking plates with the lines. Draw the shape of striking plates.
- Drill a deep hole in the middle of the striking plates.
- Drill 1 deep hole in the middle of the striking plates.



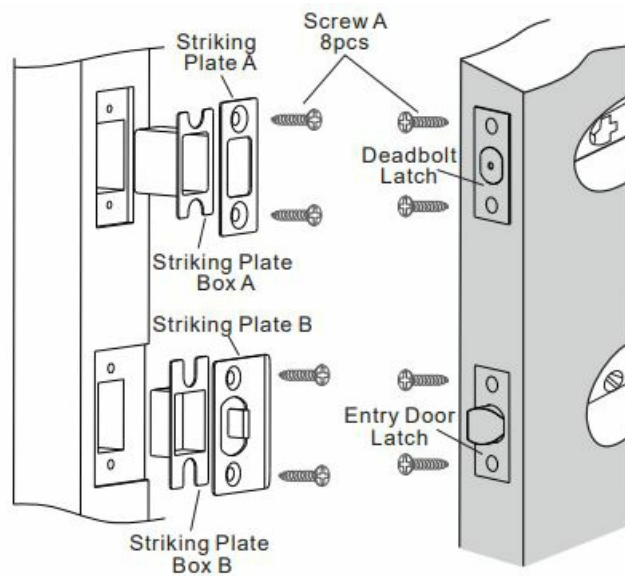
### Adjust the Deadbolt Latch

The latch is initially set for 2 3/8" (60mm). Switch to 2 3/4" (70mm), if your backset is 70mm.

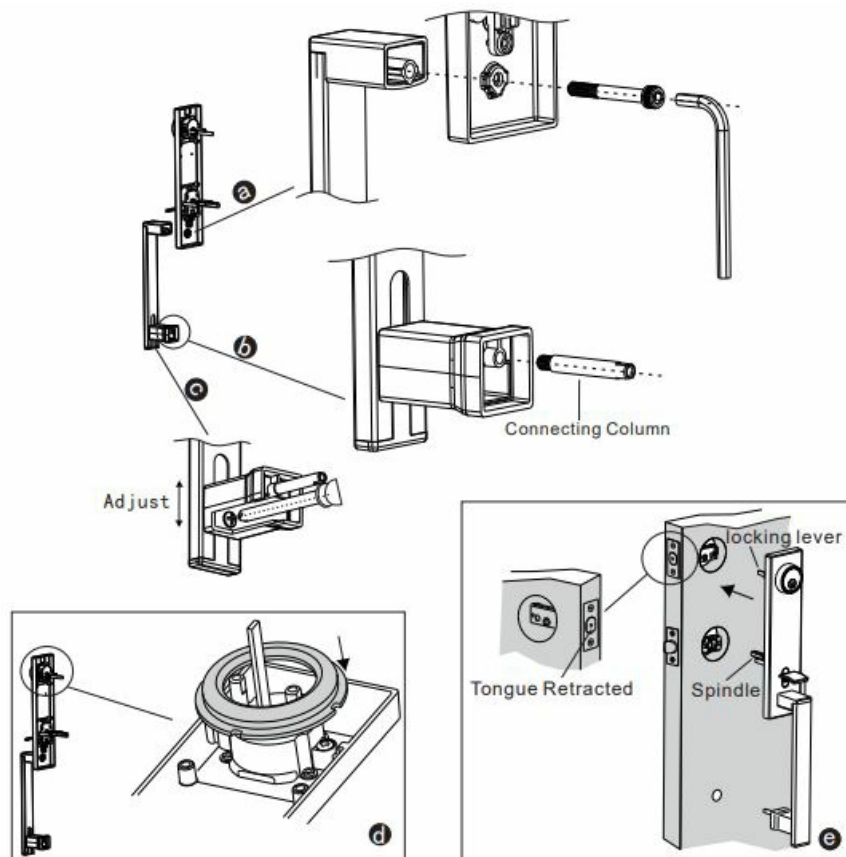


1. Pull the block to extend the tongue.
2. Rotate 180° down.
3. Pull the block back to retract the tongue

### Install the Latches and Striking Plates



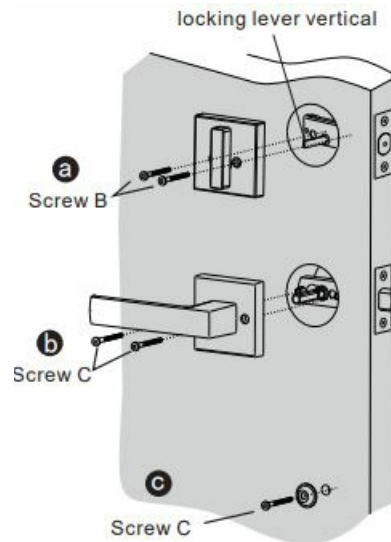
## Install Exterior Lock



1. Secure the handle on the exterior panel with screw which fixed in the handle.
2. Install the connecting column at the bottom of the handle.
3. Loosen the lower screw to adjust the connecting column height if needed.
4. Install the fixing ring.
5. Insert the locking lever into the deadbolt latch and insert the spindle into the entry door latch.

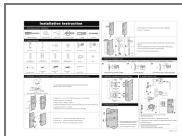
Ensure the deadbolt latch tongue is retracted.

## Install Interior Lock



1. Secure the thumb knob with Screw B. Ensure the locking lever is vertical.
  2. Secure the door lever with Screw C.
  3. Secure the gasket with Screw C.
- 

## Documents / Resources



[PRIME-LINE 9901 Front Door Handle Set](#) [pdf] Installation Guide  
9901, 9901 Front Door Handle Set, Front Door Handle Set, Door Handle Set, Handle Set, Set

## References

- [User Manual](#)

[Manuals+](#), [Privacy Policy](#)

This website is an independent publication and is neither affiliated with nor endorsed by any of the trademark owners. The "Bluetooth®" word mark and logos are registered trademarks owned by Bluetooth SIG, Inc. The "Wi-Fi®" word mark and logos are registered trademarks owned by the Wi-Fi Alliance. Any use of these marks on this website does not imply any affiliation with or endorsement.