



PreSonus Eris Studio Series High-Definition
Near Field Studio Monitors with Bluetooth



PreSonus Eris Studio Series High-Definition Near Field Studio Monitors with Bluetooth User Guide

[Home](#) » [PreSonus](#) » [PreSonus Eris Studio Series High-Definition Near Field Studio Monitors with Bluetooth User Guide](#) 

Contents

- [1 PreSonus Eris Studio Series High-Definition Near Field Studio Monitors with Bluetooth](#)
- [2 Product Usage Instructions](#)
- [3 Assembly](#)
- [4 Documents / Resources](#)
 - [4.1 References](#)
- [5 Related Posts](#)



PreSonus Eris Studio Series High-Definition Near Field Studio Monitors with Bluetooth



Product Specifications

- Product Name: High-Definition Near Field Studio Monitors
- Part Number: 70-52000187-B
- Power: AC

Product Usage Instructions

1. Powering On the Monitors

To power on the monitors, locate the POWER AC SELECT switch on the back of each monitor. Set the switch to the ON position.

2. Connecting to Audio Source

Connect your audio source (such as a computer or audio interface) to the monitors using the appropriate cables. Ensure a secure connection.

3. Adjusting Volume

Use the volume control knob on each monitor to adjust the volume levels according to your preference. Start at a low volume and gradually increase to avoid sudden loud sounds.

4. Placement of Monitors

Position the monitors on a stable surface, ensuring they are at an equal distance from your listening position. Angle the monitors towards your listening spot for optimal sound projection.

Frequently Asked Questions (FAQ)

• Q: How do I know if the monitors are powered on?

A: When the monitors are powered on, you may see an indicator light or hear a soft click sound. You can also check for any LED lights on the front panel.

• Q: Can I use these monitors with a mobile device?

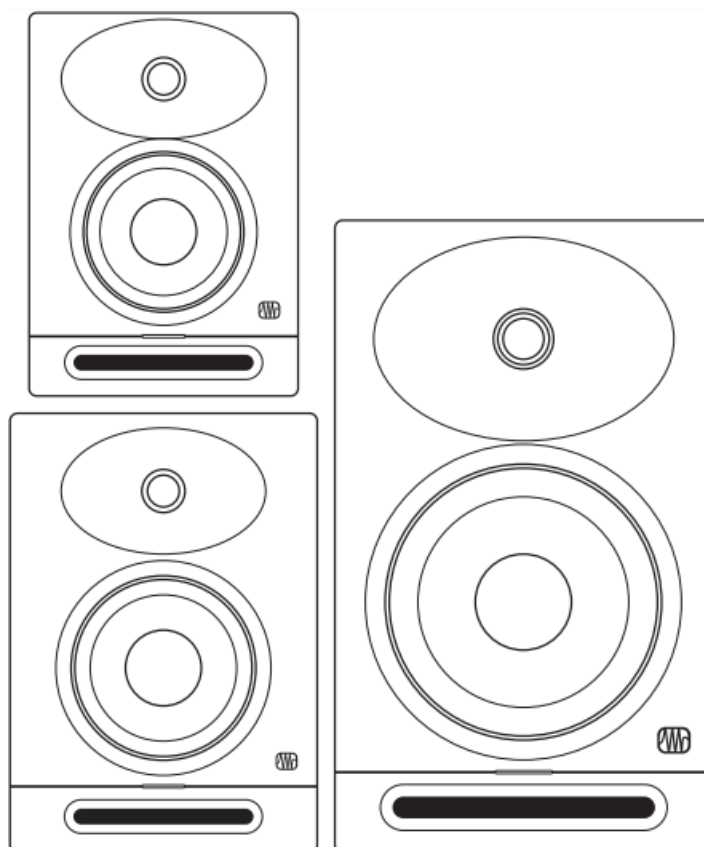
A: Yes, you can connect these monitors to a mobile device using appropriate adapters or cables. Ensure

compatibility with your device before proceeding.

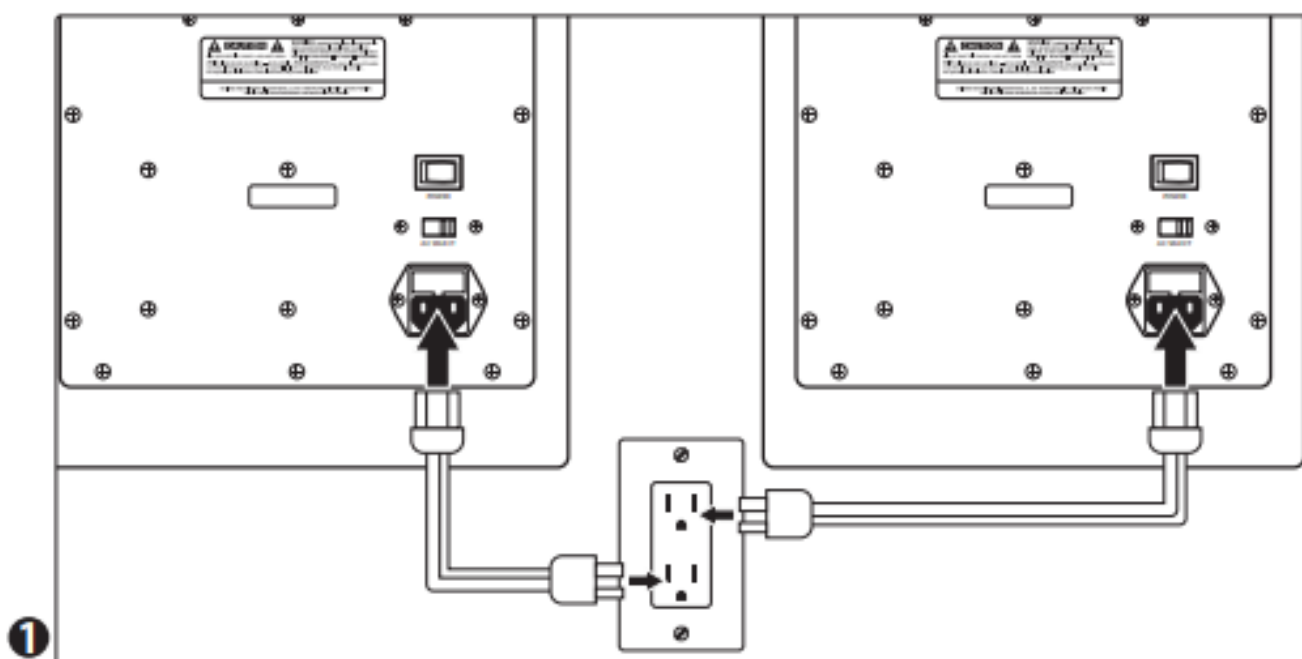
Eris® Studio Series

High-Definition Near Field Studio Monitors

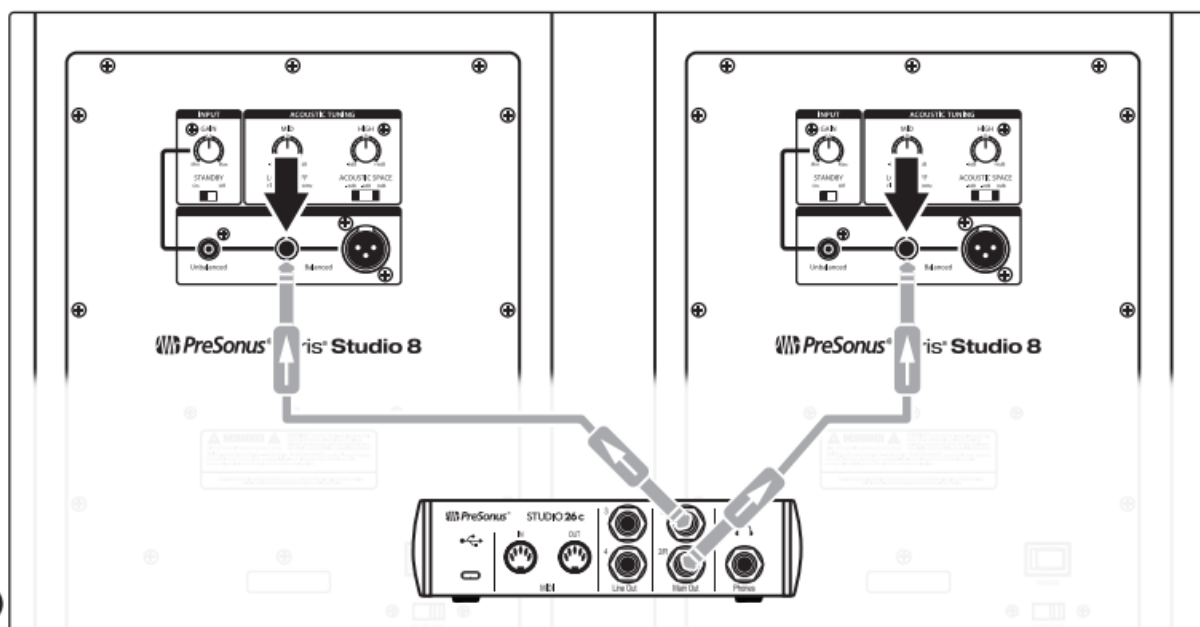
Quick Start Guide



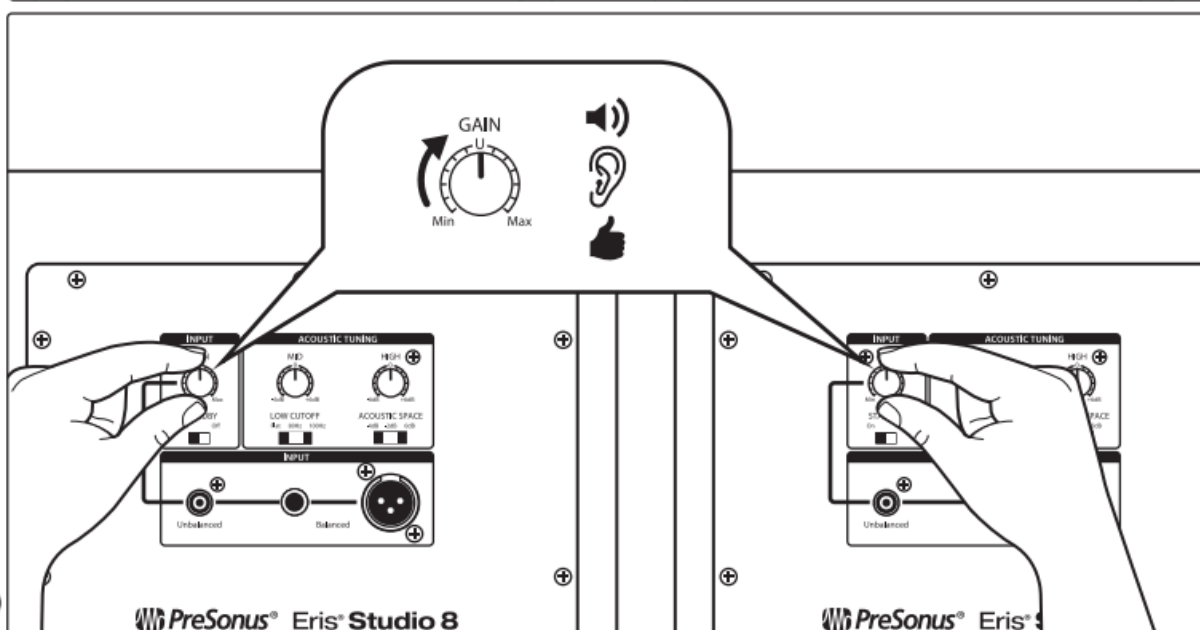
Assembly



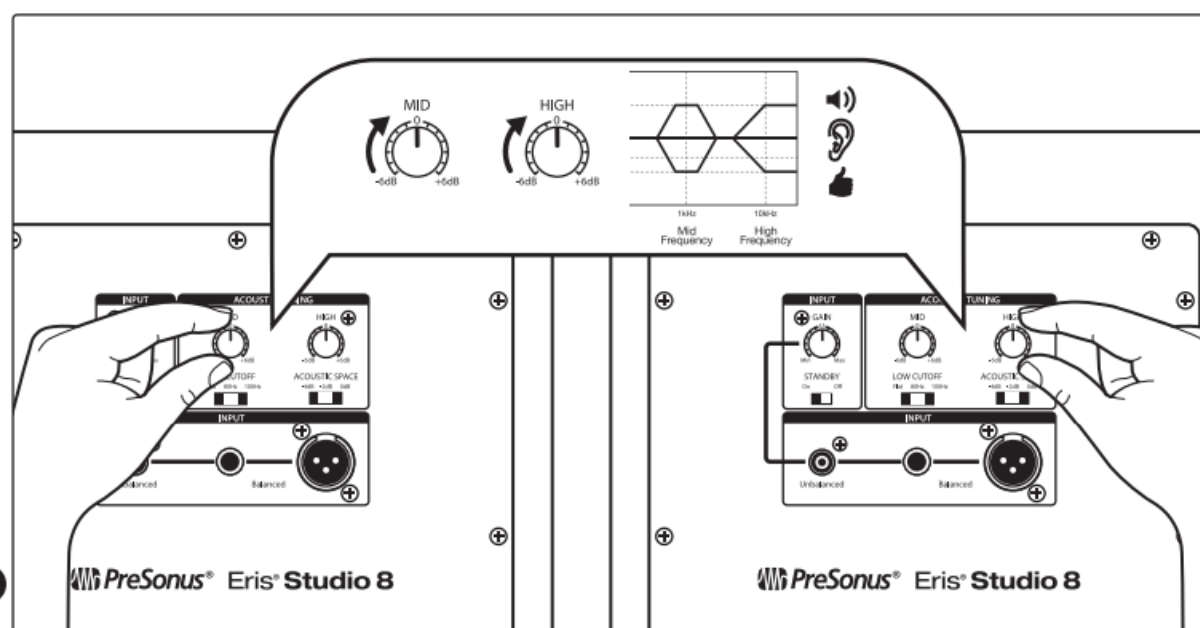
2

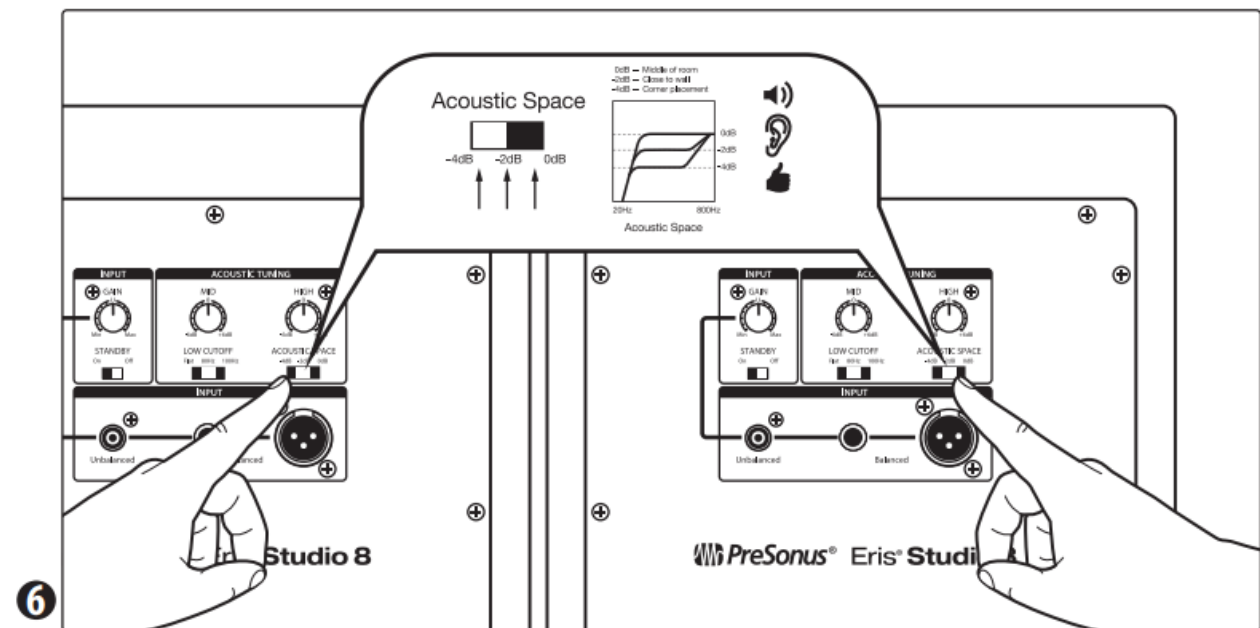
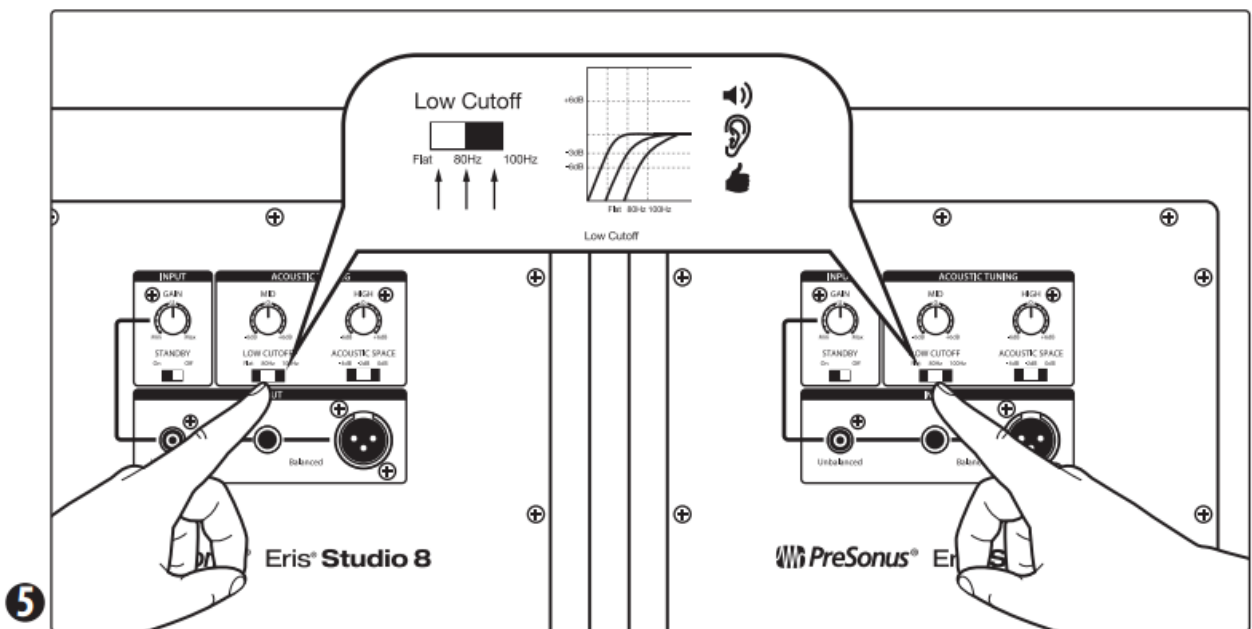


3



4





place serial number here




Register your Eris monitor to get your manual. Visit my.presonus.com and create or log into your MyPreSonus user account to manage all your PreSonus hardware and software registrations, connect with Tech Support, and more. You can also register using the MyPreSonus app on your mobile device.

Baton Rouge • USA
www.presonus.com

Part# 70-52000187-B

Documents / Resources

	<p>Presonus Eris Studio Series High-Definition Near Field Studio Monitors with Bluetooth [pdf] User Guide</p> <p>Eris Studio Series High-Definition Near Field Studio Monitors with Bluetooth, Eris Studio Series, High-Definition Near Field Studio Monitors with, Bluetooth, Near Field Studio Monitors with Bluetooth, Monitors with Bluetooth, with Bluetooth</p>
---	---

References

- [Studio One+](#)
- [PreSonus | Wherever sound takes you.](#)
- [User Manual](#)

[Manuals+](#), [Privacy Policy](#)

This website is an independent publication and is neither affiliated with nor endorsed by any of the trademark owners. The "Bluetooth®" word mark and logos are registered trademarks owned by Bluetooth SIG, Inc. The "Wi-Fi®" word mark and logos are registered trademarks owned by the Wi-Fi Alliance. Any use of these marks on this website does not imply any affiliation with or endorsement.