



**GC-\_2 Two in One  
Guardrail  
Adjustable Post  
with Gravity Lock**



## Premium Flash GC-\_2 Two in One Guardrail Adjustable Post with Gravity Lock Owner's Manual

[Home](#) » [Premium Flash](#) » Premium Flash GC-\_2 Two in One Guardrail Adjustable Post with Gravity Lock Owner's Manual 

### Contents

- [1 Premium Flash GC-\\_2 Two in One Guardrail Adjustable Post with Gravity Lock](#)
- [2 Specifications](#)
- [3 FAQs](#)
- [4 DESCRIPTION](#)
- [5 DIAGRAM OF PARTS](#)
- [6 MOUNTING THE BRACKETS](#)
- [7 INSTRUCTION FOR USE](#)
- [8 CARE AND MAINTENANCE](#)
- [9 CONTACT INFORMATION](#)
- [10 Documents / Resources](#)
  - [10.1 References](#)
- [11 Related Posts](#)



**Premium Flash GC-\_2 Two in One Guardrail Adjustable Post with Gravity Lock**



## Specifications

- GR-001-A Two-in-One Guardrail Adjustable Post with Gravity Lock
- Material Powder Coated Steel
- Dimensions 1.25" x 1.25" x 42.75"
- Weight 17.05 lbs
- Installation 3/8" x 2.5" Lag Screw 1/2" x 2.25" Lag Screw

## Description

The Two-in-One Guardrail Adjustable Post with Gravity Lock is designed to provide fall protection in various settings.

## Diagram of Parts

The system consists of multiple components. Refer to the manual for a detailed breakdown of the parts included.

## Mounting the Brackets

1. Install the bracket in a support structure capable of handling a 200-lb load at the outer edge to prevent falls.
2. You can install the bracket using either four (4) 1/2 x 2-1/4 lag screws or eight (8) 3/8 x 2-1/2 lag screws, or an

approved equivalent. Ensure the fasteners penetrate a truss or framing member for proper holding power.

- Flat Roof Installation: Use four (4) 1/2 x 2-1/4 Lag Screws
- Parapet Installation: Use eight (8) 3/8 x 2-1/2 Lag Screws

## **Care and Maintenance**

Follow OSHA and relevant standards for care and maintenance to ensure the guardrail system remains safe and effective.

## **FAQs**

### **Q: What should I do if a component is missing from my system?**

A: Contact Premium Flash at 1- [888-440-3725](tel:888-440-3725) or visit [www.premiumflash.com](http://www.premiumflash.com) for assistance in obtaining the necessary parts.

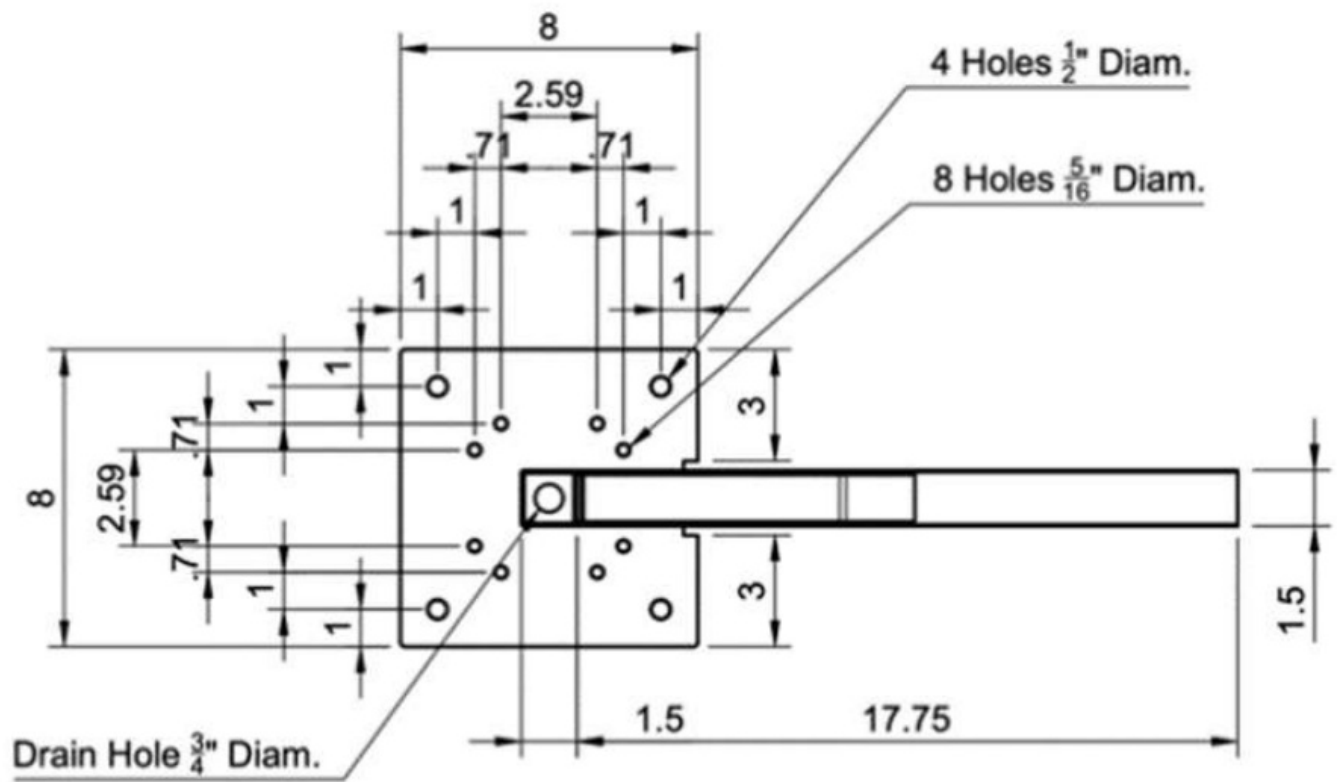
### **Q: Can the guardrail system be used on sloped surfaces?**

A: The guardrail system is primarily designed for flat surfaces. Consult with a professional before using it on sloped areas.

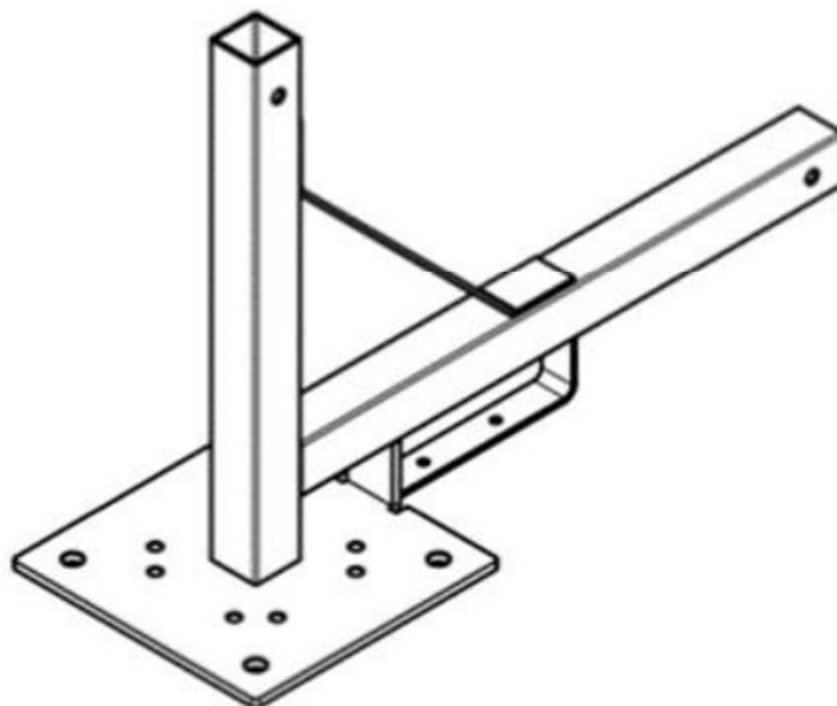
## **DESCRIPTION**

The Two-in-One Guardrail Adjustable Post with Gravity Lock is a welded steel post for parapets, open edges, and flat surfaces. It can be mounted on any vertical surface, such as a parapet wall, header beam, floor joist, wall stud, roof truss or flat roof. The post complies with OSHA and CSA regulations, the Ontario Building Code, and the Code de Sécurité Pour Les Travaux de Construction.

## **TOP VIEW**



ISOMETRIC VIEW

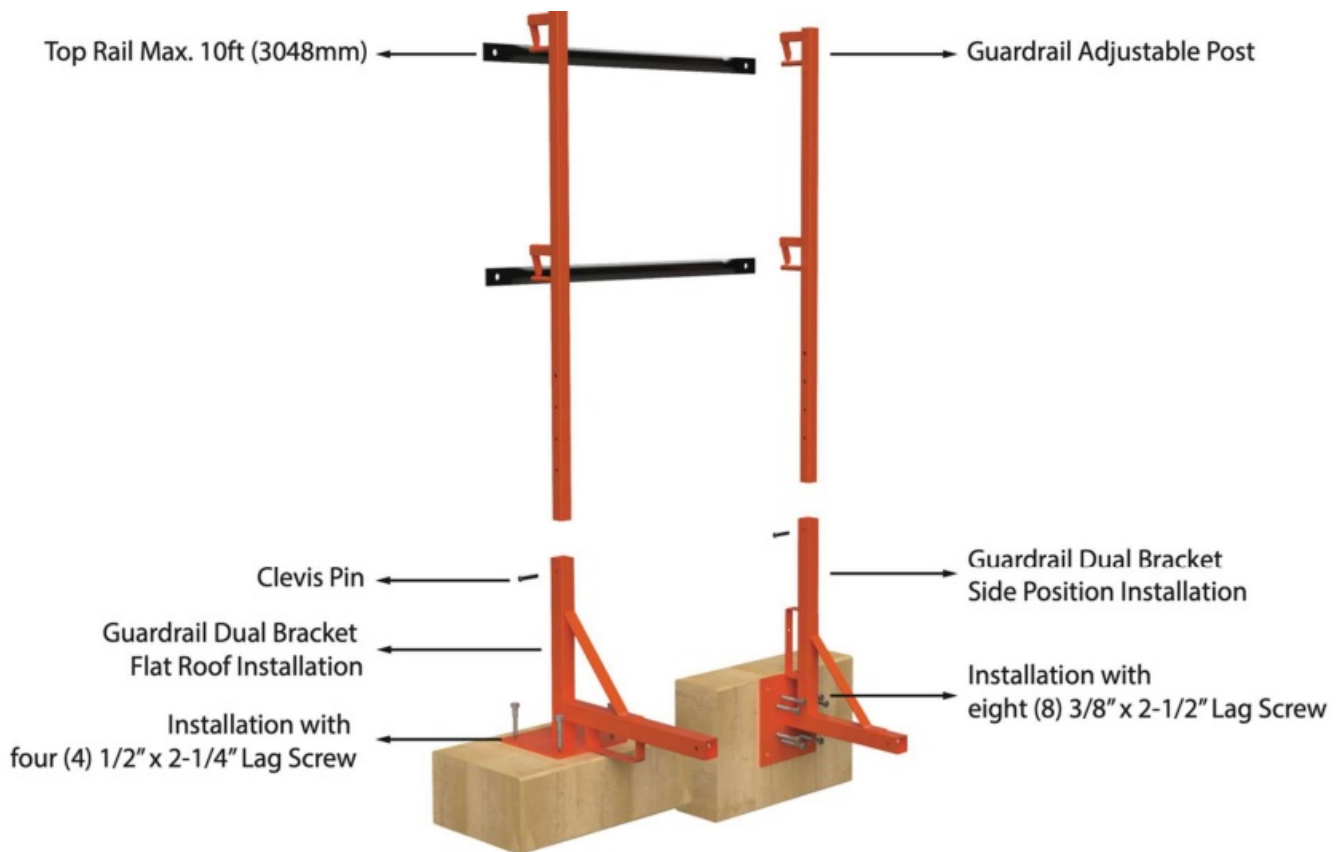


FRONT VIEW



Failure to follow product use instructions could cause severe personal injury.

## GUARDRAIL SYSTEM COMPONENTS



## GENERAL

1. Always remember to set up and use equipment in compliance with OSHA and CSA regulations, the Ontario Building Code, and the Code de Sécurité Pour Les Travaux de Construction.
2. The Guardrail System is not an anchor point.
3. Roofing guardrails are intended for use by experienced tradespeople with full knowledge of their proper use.
4. OSHA and CSA regulations, the Ontario Building Code, and the Code de Sécurité Pour Les Travaux de Construction require that employers provide training in using and caring for this product.

**IMPORTANT:** Ensure workers near the unguarded edge are protected from falls by alternative means (e.g. travel restraint, fall arrest, netting) until the guardrail system is fully installed

## MOUNTING THE BRACKETS

1. Install the bracket in a support structure capable of handling a 200-lb load at the outer edge to prevent falls.
2. You can install the bracket using four (4) 1/2" x 2-1/4" or eight (8) 3/8" x 2-1/2" lag screws or an approved equivalent. Fasteners must fully penetrate a truss or framing member to achieve proper holding power.



Flat Roof Installation with four (4) 1/2" x 2-1/4" Lag Screw



Parapet Installation with eight (8) 3/8" x 2-1/2" Lag Screw

## INSTRUCTION FOR USE

After mounting the bracket, place the adjustable post in the socket and secure it with a clevis pin at the desired height. Next, the top and middle rails on brackets are installed to create a continuous guardrail system that meets OSHA and CSA regulations, the Ontario Building Code, and the Code de Sécurité Pour Les Travaux de Construction. Finally, secure the top and middle rails with the gravity locking pin.



## TOEBOARD IMPORTANCE

Toe-boards are protective barriers that are placed near the ground or walking surface. They are often used when there is a risk that tools or other objects could fall onto a person from a platform or other raised area, or through a floor opening or hole. They are often used as a part of a guardrail system. As well, toeboards alert workers to an edge, providing added protection to help prevent individuals from slipping over the edge. If the guardrail system isn't installed on a parapet wall, Toe-boards must be installed and secured in the provided section of the guardrail. The 6" high toe-boards also ensure that the post stays in the regulation's code height range between the horizontal bars at any adjusted post height. Install a toe-board in the bracket with a minimum of 6" height if the post isn't installed on a parapet wall to prevent objects from rolling down or being accidentally kicked off the roof bars to stay within regulations.



## CARE AND MAINTENANCE

1. Inspect all equipment before and after each use to ensure there is no damage or deformation.
2. Inspect to ensure there is no deterioration due to rust. Discard if needed.
3. Any equipment exposed to the forces of a fall arrest must be taken out of service immediately.
4. Always handle the equipment with care to ensure safe and long-lasting use.
5. Please refrain from throwing or dropping any equipment from a height.
6. Do not use it if exposed to extreme heat or cold. Please discard it immediately.
7. After rain or snowstorm, clean all the system components before use.

## RELEVANT STANDARDS

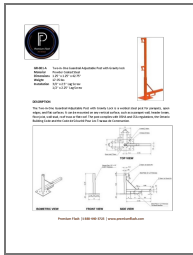
UOSHA 1926.502 CSA Z259.18:19 ONTARIO REGULATION 213/91

## CONTACT INFORMATION

- Premium Flash
- 1 [888-440-3725](tel:888-440-3725)
- [www.premiumflash.com](http://www.premiumflash.com)

## Documents / Resources





[Premium Flash GC-\\_2 Two in One Guardrail Adjustable Post with Gravity Lock](#) [pdf] Owner's Manual  
GC-\_2, GC-\_2 Two in One Guardrail Adjustable Post with Gravity Lock, GC-\_2, Two in One Guardrail Adjustable Post with Gravity Lock, Guardrail Adjustable Post with Gravity Lock, Adjustable Post with Gravity Lock, Post with Gravity Lock, with Gravity Lock, Gravity Lock, Lock

References

- [User Manual](#)

[Manuals+](#), [Privacy Policy](#)

This website is an independent publication and is neither affiliated with nor endorsed by any of the trademark owners. The "Bluetooth®" word mark and logos are registered trademarks owned by Bluetooth SIG, Inc. The "Wi-Fi®" word mark and logos are registered trademarks owned by the Wi-Fi Alliance. Any use of these marks on this website does not imply any affiliation with or endorsement.