



POWERWAVE Switch Joypad Pair Instructions

[Home](#) » [POWERWAVE](#) » POWERWAVE Switch Joypad Pair Instructions 



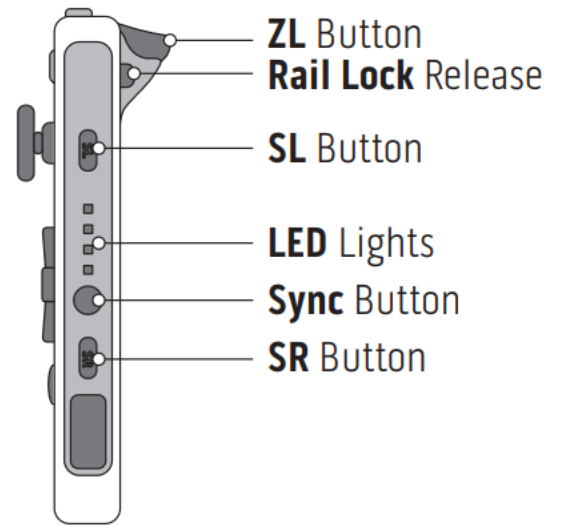
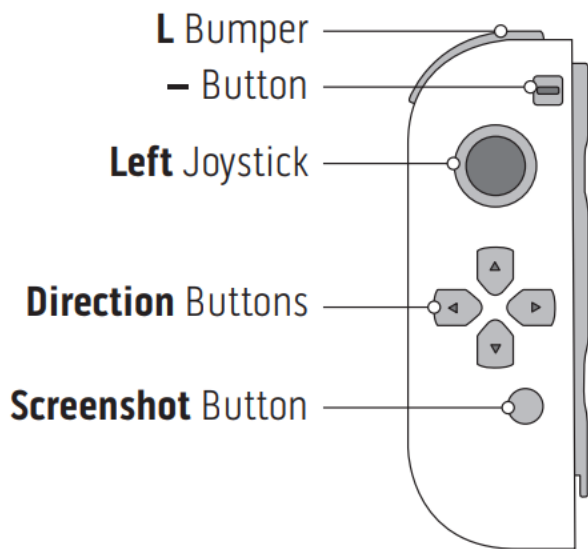
SWITCH JOYPAD PAIR INSTRUCTIONS

Contents

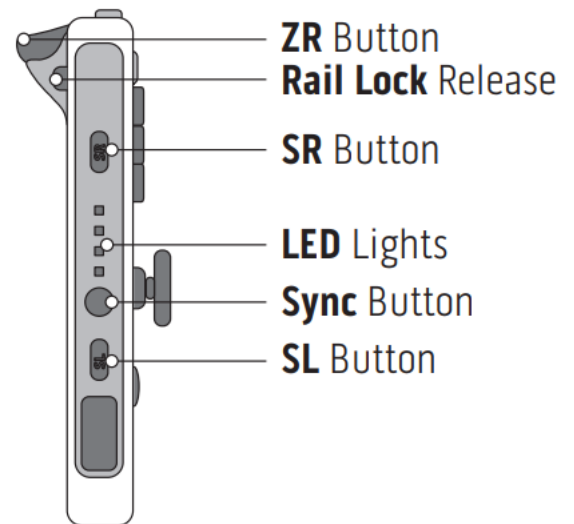
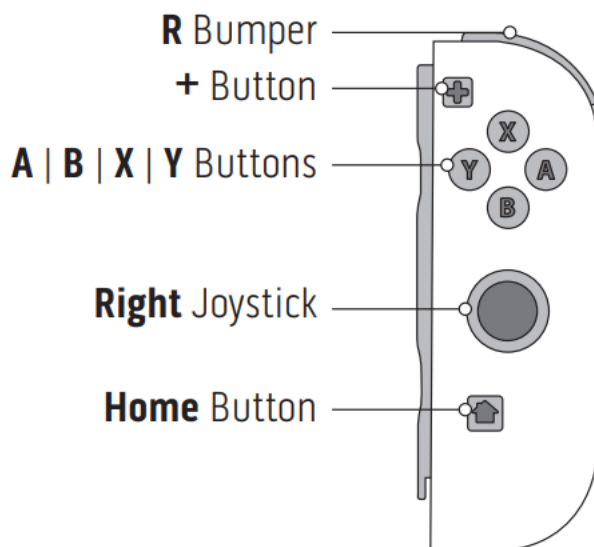
- [1 Switch Joypad Pair](#)
- [2 Connecting the Joypads to your Switch™ console](#)
- [3 How to charge your Joypads](#)
- [4 Bluetooth Connection Mode](#)
- [5 Switch Wireless Connection Mode](#)
- [6 How to connect the wrist straps to your Joypads](#)
- [7 How to wear the Joypad wrist straps](#)
- [8 Updating your Joypad](#)
- [9 Electrical Parameters](#)
- [10 Troubleshooting](#)
- [11 Product Care and Safety](#)
- [12 Documents / Resources](#)
- [13 Related Posts](#)

Switch Joypad Pair

Left Joypad | Controller Button Layout



Right Joypad | Controller Button Layout

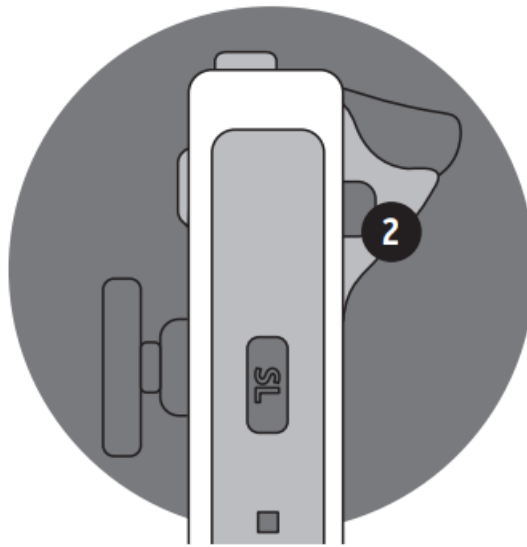


Connecting the Joypads to your Switch™ console

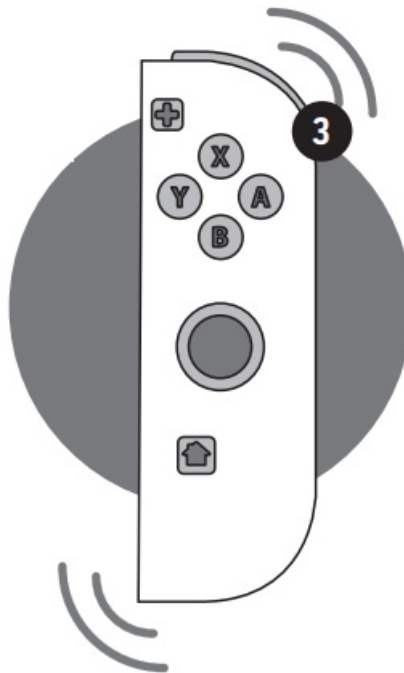
1. Slide the Joypads onto the Switch™ console and you will hear the lock sound.



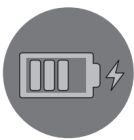
2. Joypads will vibrate and automatically connect to your Switch™ console.



3. To remove your Joypads, press and hold the rail lock release and slide the Joypads up to detach from the console.



How to charge your Joypads



The Joypads will charge when connected to your Switch™ console as long as the console has sufficient battery life or is plugged into a power adapter. We suggest having your console connected to power to ensure your Joypads fully charge.

Bluetooth Connection Mode

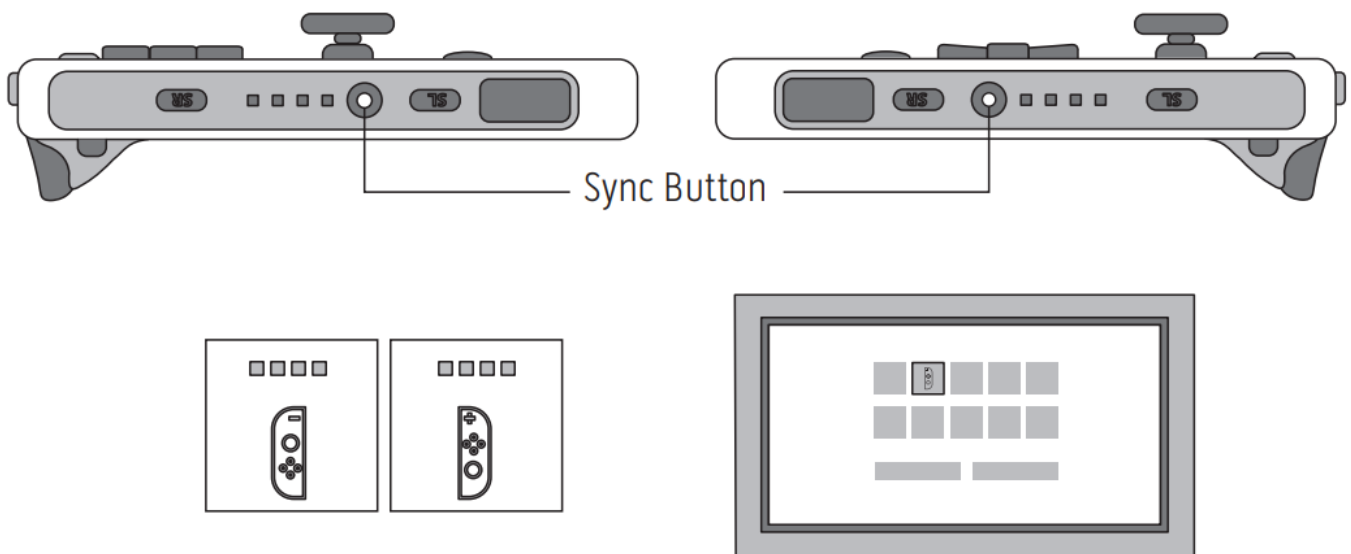
1. Press and hold the rail lock release to slide your Joypads off your Switch™ console. The Joypads will automatically enter the Bluetooth connection mode.
2. When Bluetooth is connected the Joypads will vibrate and the LED lights on the rails indicate player number (e.g., Player 1 = 1 LED light, Player 2 = 2 LED lights, etc).

Note: The working distance for the Bluetooth connection mode is up to 10 metres.

Switch Wireless Connection Mode

Connecting your Joypads:

1. From the Home menu go to “Controllers” > “Change Grip/Order”.
2. Once on this screen press and hold down the sync button on the Joypads for at least 3 seconds to enter Bluetooth searching mode; the corresponding LED lights (1 to 4) will flash in sequence.
When successfully connected the channel indicator is static.
3. Follow the onscreen instructions to complete setup.
4. Repeat for second Joypad.



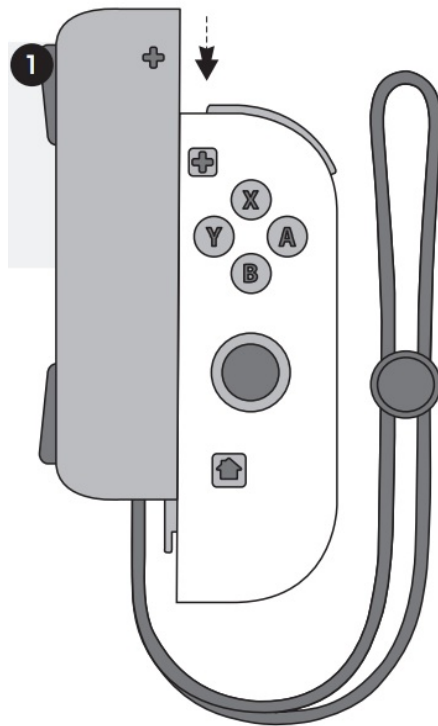
Sleep Mode:

1. When in sleep mode, press any button to wake your Joypads up, if paired successfully the Joypads will reconnect automatically to the Switch™ console. If the Joypads are not successfully connected within 8 seconds, they will return to sleep mode.
2. Press the sync button to turn off the Joypads.
3. When the Switch™ console and Joypads are in sleep mode, press and hold the home button on the Joypad for 2 seconds to wake up the console.

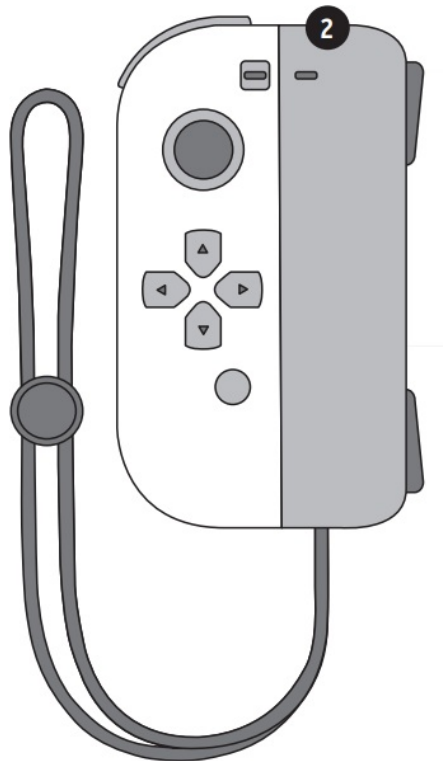
Note: When the Switch™ console is powered off, press and hold “SL+SR+L” on the left Joypad and “SL+SR+R” on the right Joypad for 5 seconds to turn on deep sleep mode.

How to connect the wrist straps to your Joypads

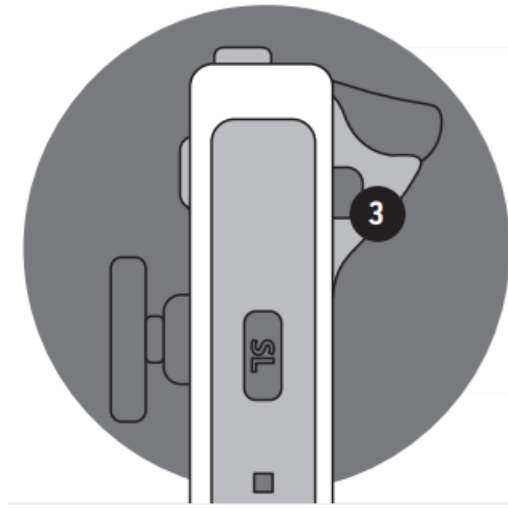
1. Make sure the wrist straps and Joypads are orientated correctly. Match the “-” strap to the “-” Joypad and the “+” strap to the “+” joypad.



2. Use the rail on the side of the Joypad and slide the wrist strap down until you hear a click.

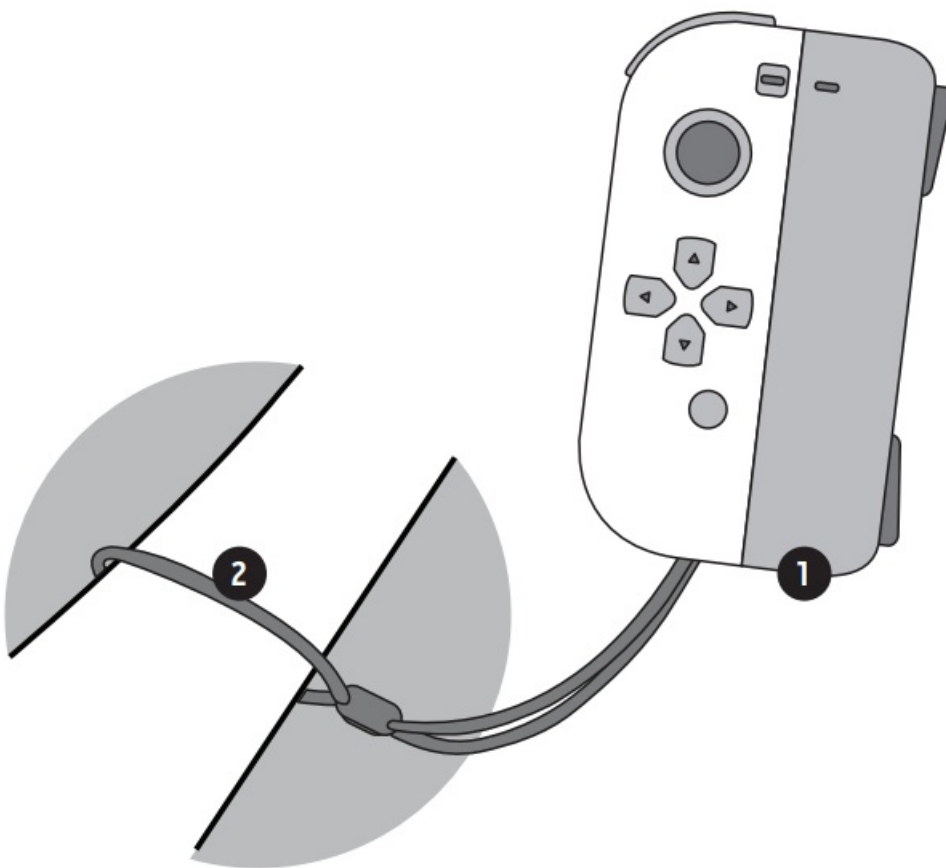


3. To remove the wrist strap, hold down the rail lock release and slide the strap up.



How to wear the Joypad wrist straps

1. Place your hand through the wrist strap and hold the Joypad firmly.
2. Tighten the wrist strap onto your wrist by holding down the wrist lock button and sliding it towards your arm. Be careful not to over tighten the wrist strap to avoid discomfort.



Note: When using the Joypads wirelessly, it is recommended that you always use the wrist strap.

Updating your Joypad

If your Joypad needs to be updated (for example your Joypads do not work properly after a Switch™ console system update), scan the provided QR code below with your mobile to download the KeyLinker App and follow the update instructions, as follows:

1. Scan the QR code with your smart phone to download and install the KeyLinker App.

	
IOS Download Code	Android Download Code
https://apps.apple.com/cn/app/keylinker/id1472490585	

2. Ensure the Bluetooth function on your phone is on and open the KeyLinker App. Press any button on your Joypad to wake it up, the App will search for devices and show the detected device in list, as shown in Figure 1.



Figure 1

3. Click the detected device to connect, once connected successfully, it will show as in Figure 2.



Figure 2

4. To update your Joypad, click the “Settings Icon” > “Update Device” > “Update Now” and follow the prompts. When update is completed or there are no updates available, if you select “Update Device” (Figure 4) the screen will show as in Figure 8.

Note: You can also use the KeyLinker App to customise your Joypad controller settings. You can change the button functions, adjust the joystick range, vibration intensity and turbo settings and calibrate your Joypad.

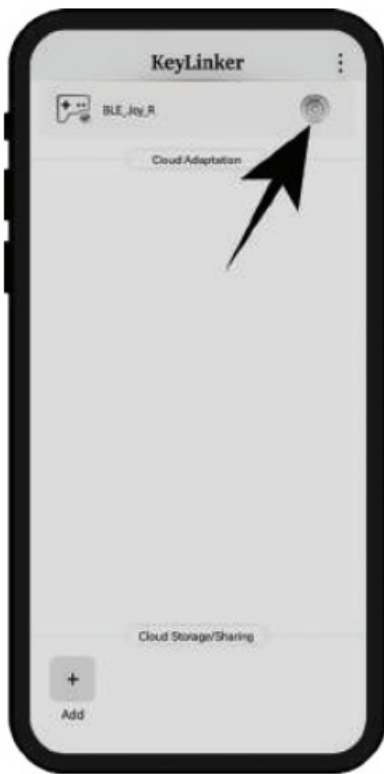


Figure 3

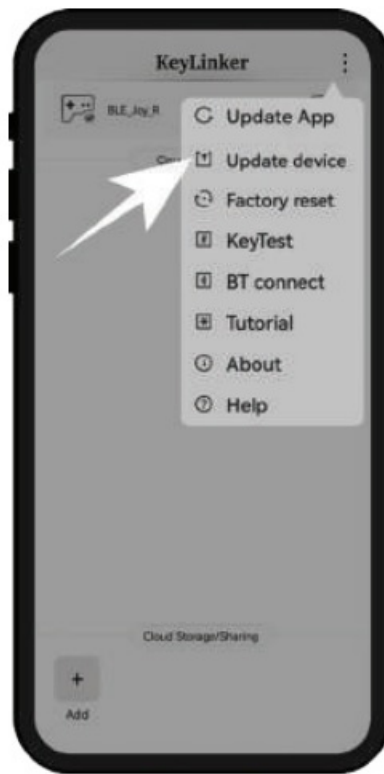


Figure 4

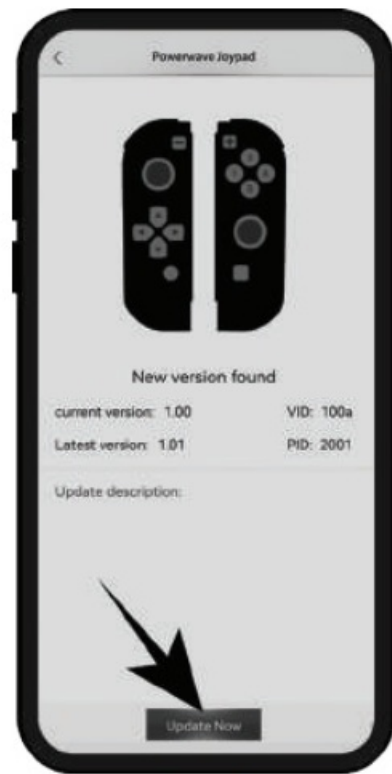


Figure 5



Figure 6



Figure 7



Figure 8

Electrical Parameters

Working Voltage	5V
Battery Voltage	3.5-4.2V
Quiescent Current	20uA
Working Current	30mA
Working Current (Motor Vibration)	50Ma

Troubleshooting

Q – My Joypads won't connect or charge.

A – You may need to reset the Joypad. This can be done by pressing the sync button 15 times in a row to recover factory settings. You will then need to sync the Joypads back to the Switch™ console.

Q – I am experiencing drifting with my joystick.

A – This may be fixed in the console's calibration settings. Go to "System Settings" > "Controllers and Sensors" > "Calibrate Motion Controls" and follow the on-screen instruction to complete calibration.

Q – Can I use Amiibo with these Joypads?

A – The Powerwave Switch Joypads do not have NFC and cannot read Amiibo.

Q – Do the Joypads support IR function?

A – The Powerwave Switch Joypads do not have IR function and are not compatible with games that require this. Check your game for compatibility requirements.

Q – Do the Joypads support HD Rumble?

A – The Powerwave Switch Joypads do not have HD Rumble and are not compatible with games that require this. Check your game for compatibility requirements.

Q – My Joypads won't connect via wireless.

A – Go into the controller settings on your console via "Home Page" > "Controllers" > "Change Grip/Order" and follow the on-screen instructions to connect.

Q – My Joypads have stopped working after a Switch™ Console system update.

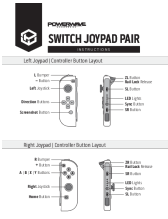
A – Download the KeyLinker App and follow the instructions in this user manual.

Product Care and Safety

- Keep your user manual for future reference.
- Use this device solely for its intended purposes. For indoor use only.
- Avoid using this device in high temperatures and humid environments.
- When not in use, store in a cool, dry environment away from direct sunlight.
- Do not use external heating equipment to dry the device. Keep away from hot surfaces and naked flames.
- Do not apply force and avoid heavy impacts. If the device is wet or damaged due to improper use, discontinue use immediately.
- Do not attempt to repair, modify or disassemble the controller (Internal High Voltage Danger).
- Clean the controller with a soft, damp cloth to prevent dirt build-up. Do not use chemical solvents, detergents or alcohol.

- Keep out of reach of small children.

Documents / Resources

	<p>POWERWAVE Switch Joypad Pair [pdf] Instructions Switch Joypad Pair, Switch Joypad, Joypad Pair, Joypad</p>
---	---