



## PowerVision PVMG10 Robot Official Website Instructions

[Home](#) » [PowerVision](#) » PowerVision PVMG10 Robot Official Website Instructions 

### Contents

- [1 PowerVision PVMG10 Robot Official Website](#)
- [2 Compliance Information](#)
- [3 specification](#)
- [4 Documents / Resources](#)
- [5 Related Posts](#)

**PowerVision**

### PowerVision PVMG10 Robot Official Website



## Compliance Information

FCC Compliance Information Changes or modifications not expressly approved by the party responsible for compliance could void the user's authority to operate the equipment. This equipment has been tested and found to comply with the limits for a Class B digital device, pursuant to part 15 of the FCC Rules. These limits are designed to provide reasonable protection against harmful interference in a residential installation. This equipment generates, uses and can radiate radio frequency energy and, if not installed and used in accordance with the instructions may cause harmful interference to radio communications. However, there is no guarantee that interference will not occur in a particular installation. If this equipment does cause harmful interference to radio or television reception, which can be determined by turning the equipment off and on, the user is encouraged to try to correct the interference by one or more of the following measures:

- Reorient or relocate the receiving antenna.
- Increase the separation between the equipment and receiver.
- Connect the equipment into an outlet on a circuit different from that to which the receiver is connected.
- Consult the dealer or an experienced radio/TV technician for help.

This device complies with part 15 of the FCC Rules. Operation is subject to the following two conditions: (1) This device may not cause harmful interference, and (2) this device must accept any interference received, including interference that may cause undesired operation.

### RF Exposure Information

This equipment complies with FCC radiation exposure limits set forth for an uncontrolled environment. End-user must follow the specific operating instructions to satisfy RF exposure compliance. This transmitter must not be co-located or operating in conjunction with any other antenna or transmitter.

### Environmentally-friendly disposal

Old electrical appliances must not be disposed of together with the residual waste, but have to be disposed of separately. The disposal at the communal collecting point via private persons is free of charge. The owner of old appliances is responsible to bring the appliances to these collecting points or to similar collection points. With this little personal effort, you contribute to recycle valuable raw materials and the treatment of toxic substances.

## specification

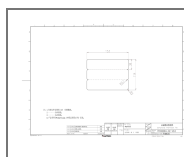
<b>Powervision S1</b>	
Model	PVS10
Folded Dimensions	141.5 × 58.4 × 27.9mm
Unfolded Dimensions	258.5 × 58.4 × 59.3mm
Weight	298g
Compatible Payload Weight	220±60g
Compatible Phones Length	164mm Max.
Operating Frequency Range	2402~2480MHz
Max e.i.r.p	≤6.2dBm
<b>Battery</b>	
Type	Li-ion

Energy	15.86Wh/1030mAh 15.4V *Capacity equal to 4120mAh 3.7 V
Max Working Time	15 hrs * Under ideal conditions with the gimbal fully balanced.
Charging Time	2hrs * Measured with a 18W charger
Working Temperature	0 - 40°C
Charging Temperature	5 - 40°C
Max Charging Power	18W, 5V/3A 9V/2A 12V/1.5A
<b>Charging Output</b>	
Wireless Output	10W Max.
USB-C Output	PowerOff: 18W Max. PowerOn: 5W Max.
<b>Wireless</b>	
<b>model</b>	BLE5.0



7010094-02 V3.0

## Documents / Resources



[PowerVision PVMG10 Robot Official Website](#) [pdf] Instructions  
PVS11, 2AKBMPVS11, PVMG10 Robot Official Website, PVMG10, Robot Official Website

[Manuals+](#)