



PowerShield Netmate Lite Card Software Installation Guide

[Home](#) » [PowerShield](#) » PowerShield Netmate Lite Card Software Installation Guide 

Contents

- [1 PowerShield Netmate Lite Card Software](#)
- [2 Product Information](#)
- [3 Product Usage Instructions](#)
- [4 Netkit Software Installation Guide](#)
- [5 The way to use Netkit software](#)
- [6 Documents / Resources](#)



PowerShield Netmate Lite Card Software



Product Information

The Netkit software is a package that includes the necessary tools for network testing and configuration. It allows users to simulate network environments and perform various network-related tasks.

Software Installation Guide:

1. Double click on the “setup.exe” file to start the installation process.
2. Select the English language option and click “Next”.
3. Browse for the desired installation location and click “Next”.
4. Select the English installation option and click “Next” twice.
5. Click “Next” and then “Finish” to complete the installation.

Product Usage Instructions

1. Connect the NetmateLite card to the computer using a network cable.
2. Open the “Netkit.exe” application.
3. Select “NML” at the top right corner of the application.
4. Click on the “Search” button to obtain the IP address of the connected device.
5. To change the IP address, click on “Network Settings”.

Netkit Software Installation Guide

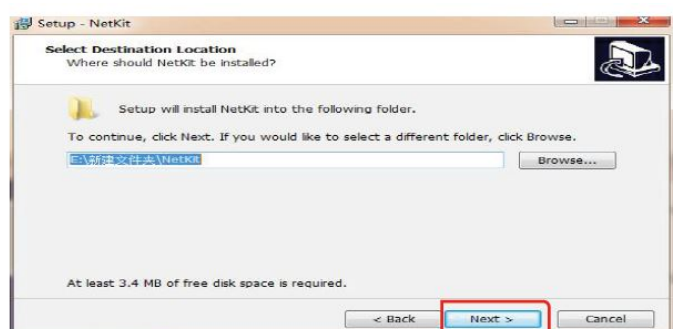
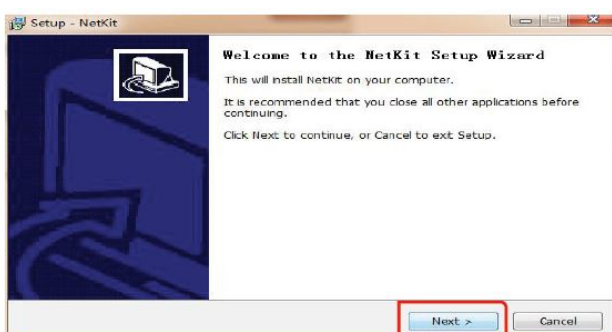
1. Doubleclick“setup.exe”, select English, then click“ ”.



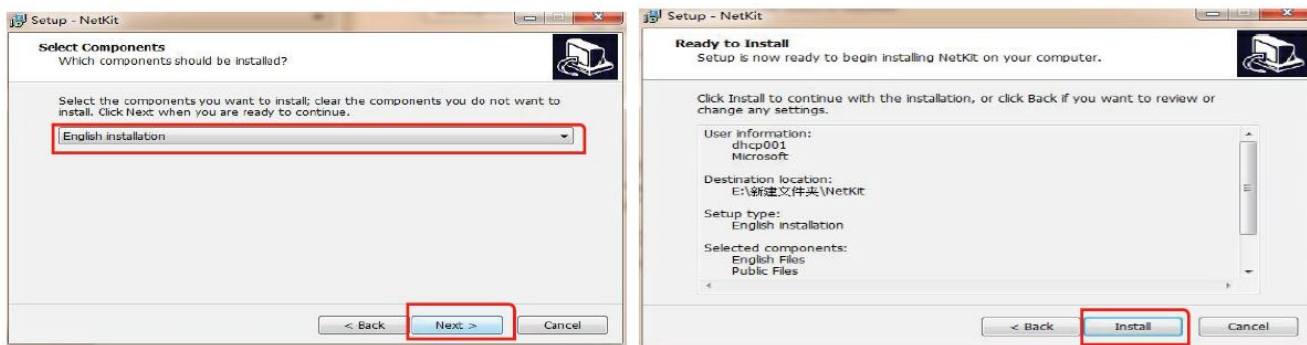
Netkit Package



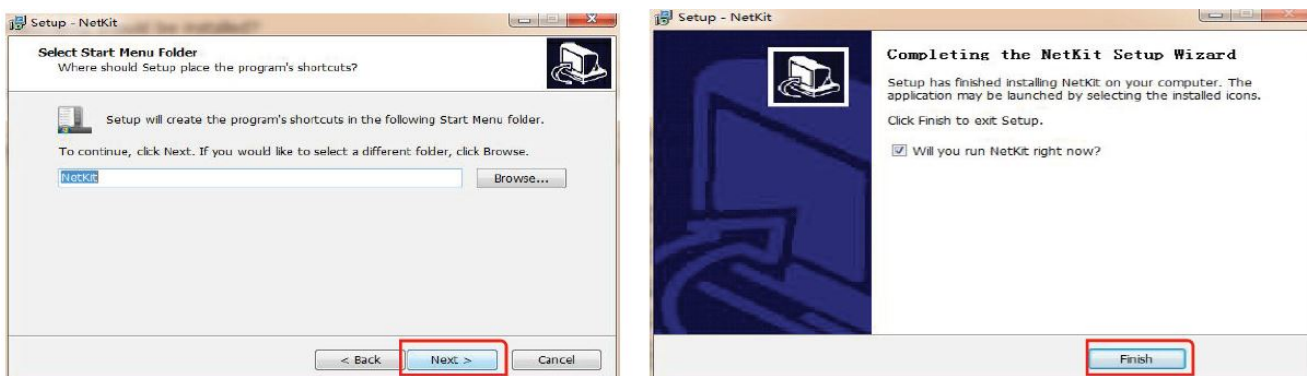
2. Click“Next”, browse the installed location, then click“Next”.



3. Select“English installation”, click“Next”, click“Next” again.



4. Click "Next", click "Finish".



The way to use Netkit software

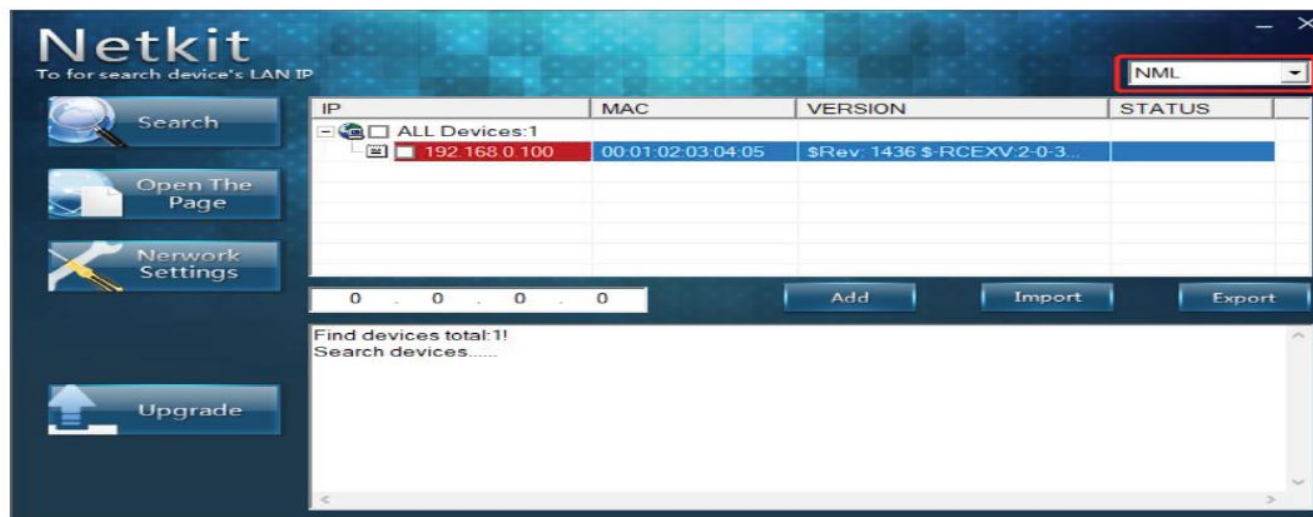
1. Connect the NetmateLite card to the computer with network cable.



2. Open "Netkit.exe".



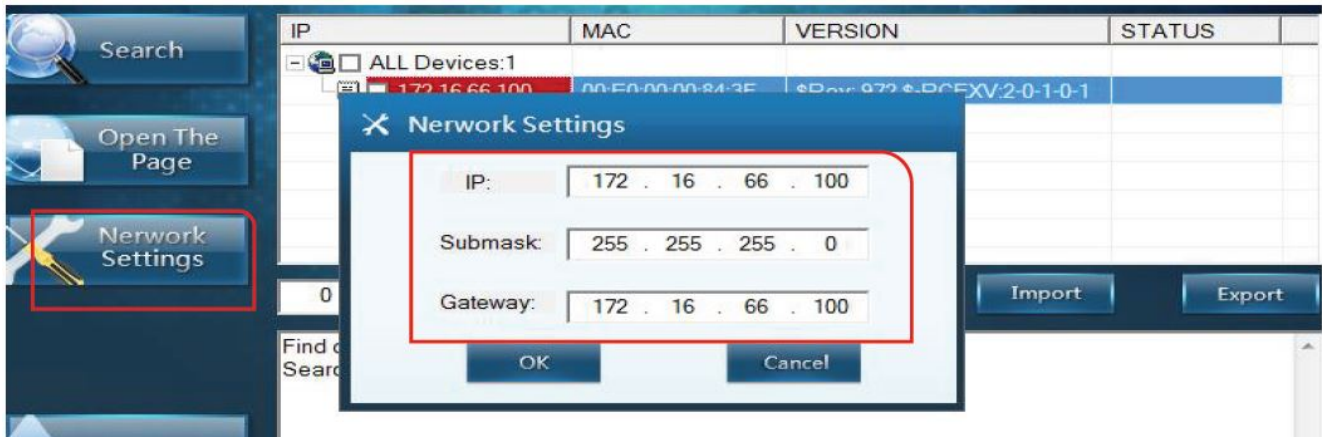
3. Select "NML" at the right top corner, and then click "Search".



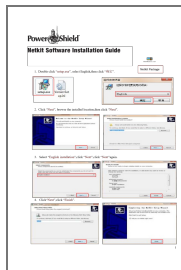
4. You will get its IP as follow.



5. You can also change its IP by clicking “Network Settings”.



Documents / Resources



[PowerShield Netmate Lite Card Software](#) [pdf] Installation Guide
SNMP V1 Lite, Netmate Lite Card Software, Netmate, Software, Netmate Software, Lite Card S
oftware