



**CYBER-SECURE  
SNMP Comms Card**



# PowerShield CYBER-SECURE SNMP Comms Card Owner's Manual

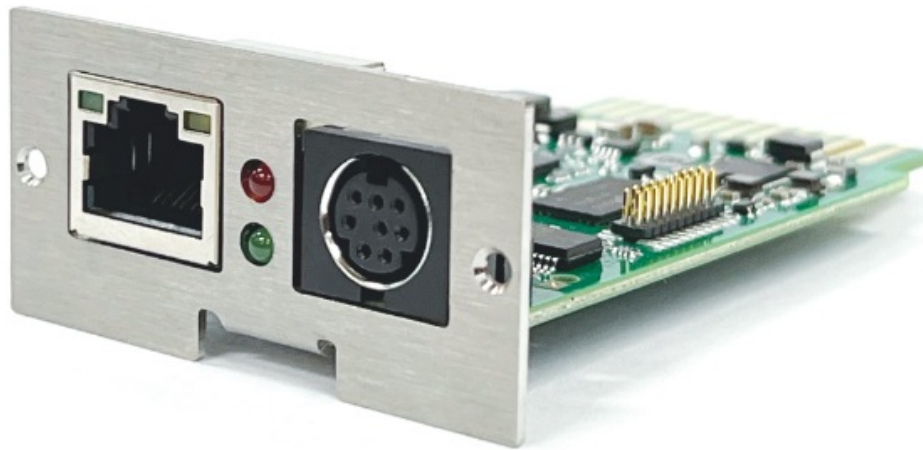
[Home](#) » [PowerShield](#) » PowerShield CYBER-SECURE SNMP Comms Card Owner's Manual 

## Contents

- [1 PowerShield CYBER-SECURE SNMP Comms Card](#)
- [2 FEATURES](#)
- [3 OVERVIEW](#)
- [4 CYBER-SECURE SNMP SPECIFICATIONS](#)
- [5 Product Usage Instructions](#)
- [6 FAQ](#)
- [7 Documents / Resources](#)
  - [7.1 References](#)
- [8 Related Posts](#)



**PowerShield CYBER-SECURE SNMP Comms Card**



The Cyber-Secure SNMP follows the Australian Cyber Security Centre (ACSC) Information Security Manual (ISM) framework for risk management and cyber threats to protect information and systems from external threats. The Cyber Secure Web card follows industry standards for the user interface and offers complex emergency procedures to be enacted simply. Made in Germany and the USA the Cyber-Secure SNMP is the most flexible UPS, SNMP and IT infrastructure solution on the market. It is developed to meet the requirements of the USA IoT Cybersecurity Act and EU Cybersecurity Act addressing information privacy, specifically pertaining to connected devices.



## FEATURES

### **LDAP AND RADIUS SUPPORT**

More efficiency and more transparency than other devices. The Cyber-Secure SNMP provides enhanced connectivity via Radius for structured access according to local security compliance guidelines.

### **MODERN AND FLEXIBLE INTERFACE TO ENSURE COMFORT AND SECURITY**

Access the Cyber-Secure SNMP directly via the modern and intuitive web interface to manage all requisite functions.

### **FULLY AUTOMATABLE FOR TIME-CRITICAL UPS AND IT MANAGEMENT**

Benefit from the possibilities made by full integration of the Cyber-Secure SNMP as a management system for script solutions.

### **PRECISE EVENT AND MEASUREMENT LOGS**

Log all measurement data and events with precise time stamps. The non-volatile memory stored records can be used to reconstruct the timeline in case of an incident. Complex communication and notification system.

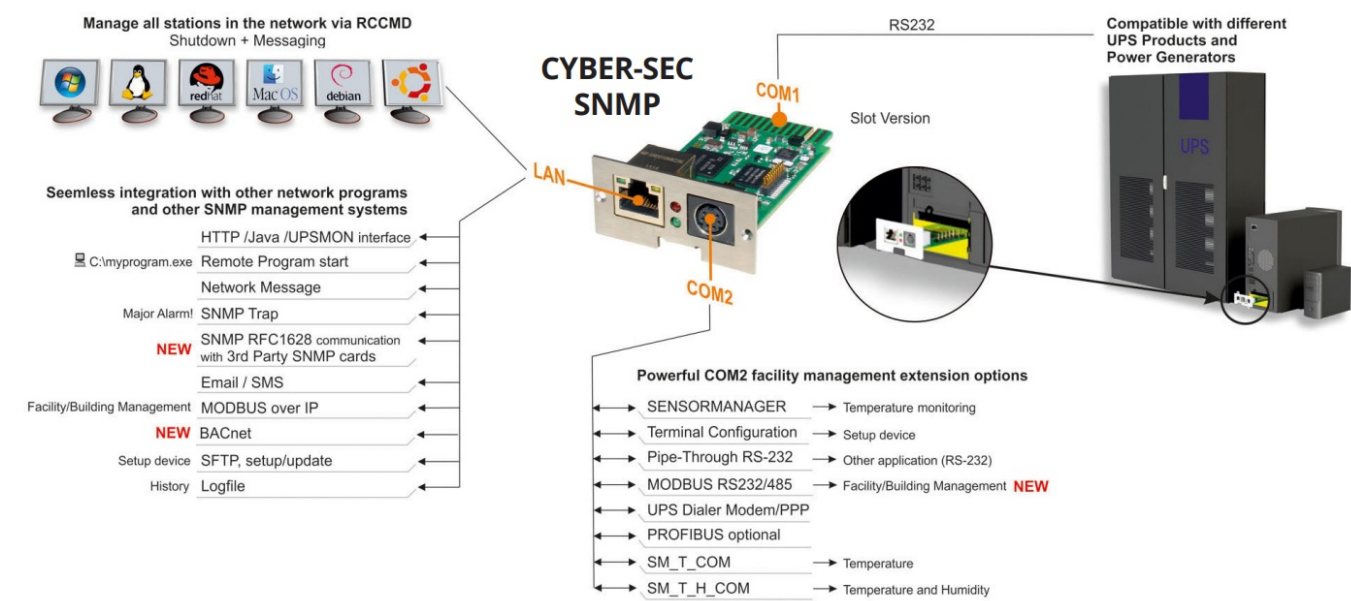
### **NETWORK SECURITY & SERVICES**

Supports all common network services and fits seamlessly into any existing IT infrastructure.

2-YEAR WARRANTY

The Cyber-Secure SNMP comes with a 2-year warranty

OVERVIEW



CYBER-SECURE SNMP SPECIFICATIONS

MODEL	CYBER-SEC SNMP
Model Number	PSCSSNMP
Power consumption	12V (min. 9V, max. 30V DC), 150 mA
Network / LAN	10/ 100Mbit Base-T auto sense
RS-232 Interface	2
RS-485 Interface	COM2 MINIDIN connector for RS232
USB Interface	Optional separate card
AUX Interface	not supported on cs141 Mini card
MODBUS over IP	Standard
BACnet over IP	Standard
Remote Syslog	Standard
Radius Server support	Standard
Status LED's	Green LED
MIB file available	Red LED
<b>PHYSICAL</b>	
Dimension L x W x H (mm)	42 x 80 x 26mm
Net Weight (kgs)	36 g
<b>OPERATING ENVIRONMENT</b>	
Temperature	0–70°C
Storage	0–70°C
Max. operating ambient Temperature	55°C
CPU	Cortex A8 800 MHz
Flash Memory	512 MB
RAM	128 MB DDR3 RAM
Humidity	20-95%, not condensing
Max. operating ambient Temperature	55°C
<b>CERTIFICATION</b>	
	CE, UL/NEMKO
MTBF (EN/IEC 61709)	916.028 hours (104.6 years)
<b>WARRANTY</b>	
Standard Warranty	2 Years

## Specifications

- **Product Name:** Cyber-Secure SNMP
- **Features:** LDAP and RADIUS support, modern and flexible interface, fully automatable, precise event and measurement logs, N network security & services
- **Warranty:** 2 years

## Product Usage Instructions

### LDAP AND RADIUS SUPPORT

The Cyber-Secure SNMP provides enhanced connectivity via Radius for structured access according to local security compliance guidelines. Make sure to configure LDAP and RADIUS settings based on your network requirements.

### MODERN AND FLEXIBLE INTERFACE

Access the Cyber-Secure SNMP via the modern web interface to manage all functions. Ensure you are familiar with the interface layout for efficient navigation and control.

## FULLY AUTOMATABLE FOR TIME-CRITICAL MANAGEMENT

Integrate the Cyber-Secure SNMP as a management system for script solutions to automate UPS and IT management tasks. Configure automation settings according to your specific needs.

## PRECISE EVENT AND MEASUREMENT LOGS

Log all measurement data and events with time stamps. Utilize the stored records for incident reconstruction. Familiarize yourself with the communication and notification system for effective monitoring.

## NETWORK SECURITY & SERVICES

Ensure seamless integration into your existing IT infrastructure by configuring network security settings. Verify compatibility with common network services for optimal performance.

## FAQ

### Q: What is the warranty period for the Cyber-Secure SNMP?


A: The product comes with a 2-year warranty from the date of purchase.

### Q: Can the Cyber-Secure SNMP be integrated with third-party monitoring systems?

A: Yes, the Cyber-Secure SNMP supports integration with third-party monitoring systems for enhanced functionality.

- [www.powershield.com.au](http://www.powershield.com.au)

## Documents / Resources

	<p><a href="#">PowerShield CYBER-SECURE SNMP Comms Card [pdf] Owner's Manual</a> 54, CYBER-SECURE SNMP Comms Card, CYBER-SECURE SNMP, Comms Card, Card</p>
---	--

## References

- [User Manual](#)

[Manuals+](#), [Privacy Policy](#)

This website is an independent publication and is neither affiliated with nor endorsed by any of the trademark owners. The "Bluetooth®" word mark and logos are registered trademarks owned by Bluetooth SIG, Inc. The "Wi-Fi®" word mark and logos are registered trademarks owned by the Wi-Fi Alliance. Any use of these marks on this website does not imply any affiliation with or endorsement.