



Contents [[hide](#)]

- [1 PowerLocus Jumpy Open Ear Headphones](#)
- [2 Product Information](#)
- [3 Technical Specifications](#)
- [4 Charging](#)
- [5 Wearing](#)
- [6 Bluetooth Pairing](#)
- [7 Function](#)
- [8 Please Recycle](#)
- [9 LET'S BE SAFE](#)
- [10 For customers in the UK, STATEMENT OF COMPLIANCE](#)
- [11 FAQ](#)
- [12 Documents / Resources](#)
 - [12.1 References](#)



PowerLocus Jumpy Open Ear Headphones



Product Information

- Open Ear Headphones
- Brand: PowerLocus
- Model: Move Jumpy

For Support: info@powerlocus.com

PLEASE CHARGE THE CASE FULLY BEFORE FIRST USE, OTHERWISE THE EARPHONES WILL NOT FUNCTION PROPERLY!

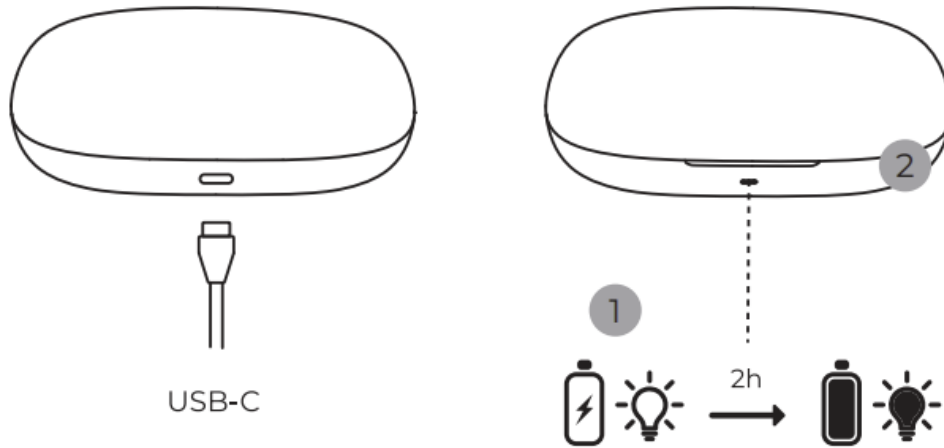
Technical Specifications

- Bluetooth Version: 5.4
- Bluetooth Mode Protocol: HFP, AD2P, AVRCP
- Operating Distance: 10 Meters
- Frequency Response: 20Hz-20,000Hz
- Power Output: 10mW
- Product weight (incl. charging case) – 70.5g
- Bluetooth operating frequency: 2.4- 2.480GHz
- Maximum headphone power: 5 mW
- Bluetooth power class: 2

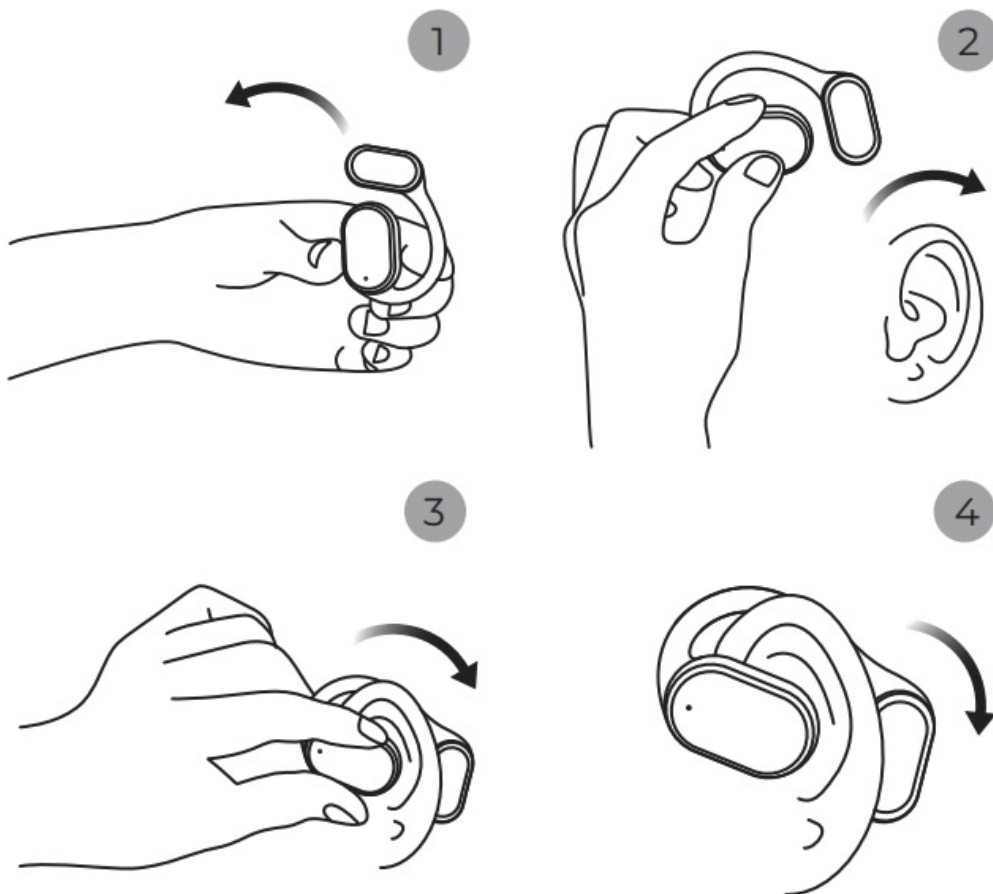
- Operating temperature: 0~40°C

Charging

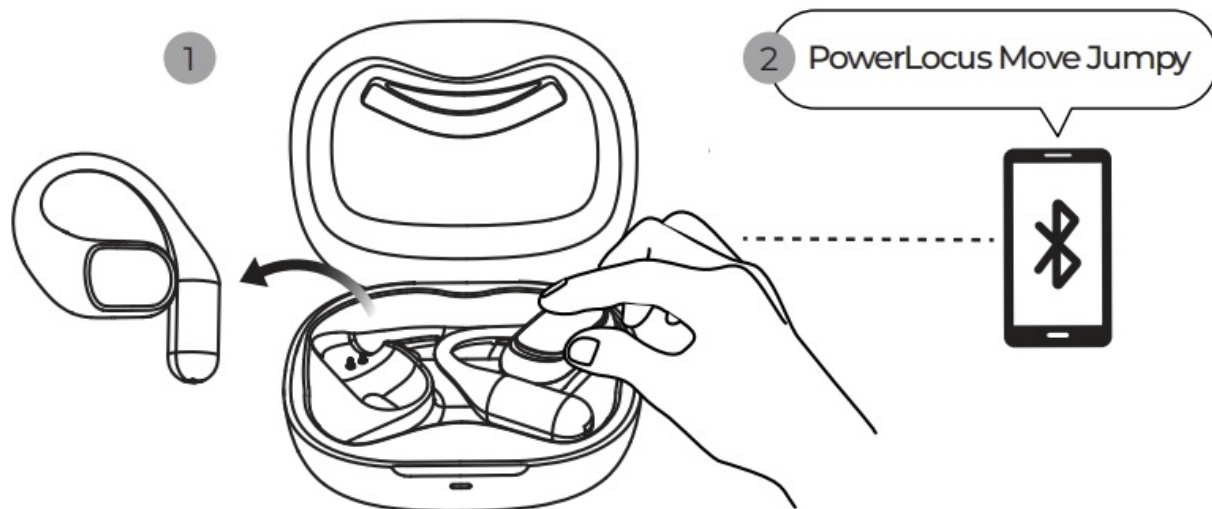
1. During Charging, the LED of the case will be flashing.
2. When Full charged, the LED of the case will be ON constantly.



Wearing



Bluetooth Pairing



Function

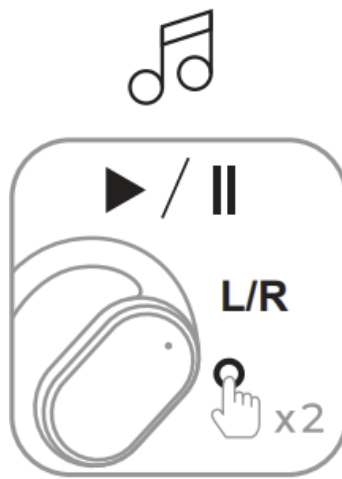
Tap 1 time to answer an incoming call



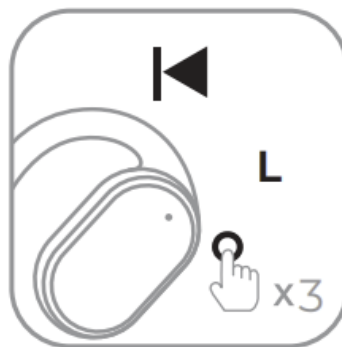
Tap 2 times to hang up and reject an incoming call



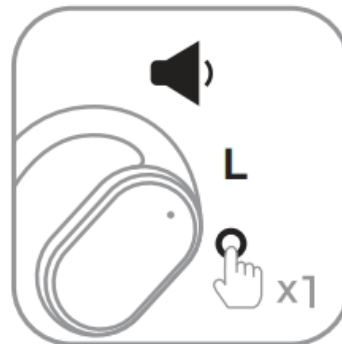
Tap 2 times to play/pause



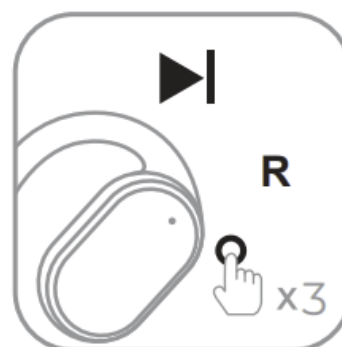
Tap 3 times to change to previous song



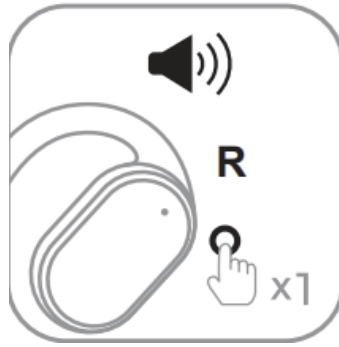
Tap 1 time to decrease the Volume



Tap 3 times to change to next song



Tap 1 time to increase the Volume



Please Recycle



Disposal of waste batteries and electrical and electronic equipment (applicable in the European Union and other countries with separate collection systems). This symbol on the product, the battery or on the packaging indicates that the product and the battery shall not be treated as household waste. On certain batteries, this symbol might be used in combination with a chemical symbol. The chemical symbol for lead (Pb) is added if the battery contains more than 0.004% lead. By ensuring that these products and batteries are disposed of correctly, you will help to prevent potentially negative consequences for the environment and human health, which could be caused by inappropriate waste handling. The recycling of the materials will help to conserve natural resources. In case of products that for safety, performance or data integrity reasons, require a permanent connection with an incorporated battery, this battery should be replaced by qualified service staff only. To ensure that the battery and the electrical and electronic equipment will be treated properly, hand over these products at end-of-life to the appropriate collection point for the recycling of electrical and electronic equipment. For all other batteries, please view the section on how to remove the battery from the product safely. Hand the battery over to the appropriate collection point for the recycling of waste batteries. For more detailed information about the recycling of this product or battery, please contact your local Civic Office, your household waste disposal service or the shop where you purchased the product or battery.

LET'S BE SAFE

IT IS IMPORTANT THAT YOU PLEASE READ THIS SECTION COMPLETELY.

To avoid hearing damage, limit the time you use headphones at high volume and set the volume to a safe level. The louder the volume, the shorter the safe listening time is. If water or foreign matter enters the unit, stop use immediately and contact PowerLocus. In particular, be careful in the following cases: – When using the unit near a sink or liquid container. Be careful that the unit does not fall into a sink or container filled with water – When using the unit in the rain or snow, or in humid conditions. If you touch the unit with wet hands or put the unit in the pocket of a damp article of clothing, the unit may get wet. Never insert the USB plug when the headphone or charging cable is wet. If the USB plug is inserted while the unit or charging cable is wet, a short circuit may occur due to liquid (tap water, seawater, soft drink, etc.) or foreign matter on the unit or charging cable, and cause abnormal heat generation or malfunction.

Safety Precautions

Please DO NOT use adapters more than DC5V 1A! Please use the original cable supplied with the package as different cables could harm the product and void its warranty.

Attention – Magnetic Fields

Magnetic fields are being generated by this product that could cause interference with cardiac pacemakers, implanted defibrillators (ICDs), and other implants. Please always maintain at least 10cm/3.94 inch distance between the headphone and the pacemaker, implanted defibrillators (ICDs) and other implants. Check with your doctor before use if you are fitted with a medical device such as a pacemaker or a programmable shunt!

Safety Precautions for the Batteries:

Do not expose the batteries (battery pack or batteries installed) to excessive heat, such as sunshine, fire or the like, for a long time. Do not subject the batteries to extreme low temperature conditions that may result in overheating and thermal runaway. Do not dismantle, open, or shred secondary cells or batteries. In the event of a cell leaking, do not allow the liquid to come in contact with the skin or eyes. If contact has been made, wash the affected area with copious amounts of water and seek medical advice.

Secondary cells and batteries need to be charged before use. Always refer to the manufacturer's instructions or product manual for proper charging instructions. Always

dispose of properly.

Notice

1. Keep the product dry; do not place the product in damp places.
2. Keep out of direct sunlight and high temperatures. High temperatures may result in damage.
3. Keep out of cold temperatures, this will help avoid internal damage.
4. Do not disassemble the product.
5. Avoid dropping the product.
6. Do not continue to charge the product over 10 hours.
7. When charging use the Type-C charging cable that came with the product.

CE

Hereby GL Grup-2015 LTD declares that wireless headphone PowerLocus Move | Jumpy is in compliance with essential requirements and other relevant conditions of Directive 2014/53/EU. The full text of the EU declaration conformity is available at the following internet address: (powerlocus.com/doc)

Frequency: 2402-2480 MHz

Max radio frequency power: 100 mW (EIRP)

GL GRUP-2015 LTD. 36 VASIL LEVSKI STREET, 5370 DRYANOVO, BULGARIA

UK

Hereby, GL GRUP-2015 LTD. declares that this equipment is in compliance with the UK relevant statutory requirements. To and out more about the UK Declaration of Conformity, please visit : <https://powerlocus.com/doc-uk-universe>

Aleksandar
Glushkov
**General
Manager**



Dryanovo BG , 2024-06-07

Registered Office: GL GRUP-2015
LTD, Vasil Levski 36,

For customers in the UK, STATEMENT OF COMPLIANCE

Model No.: Move | Jumpy

Name and address of the manufacturer's authorized representative: GL GRUP-2015 LTD, Unit J. Hove Technology Centre, Hove BN3 7ES United Kingdom

This statement of compliance is issued under the sole responsibility of the manufacturer: GL GRUP-2015 LTD, Vasil Levski 36, Dryanovo 5370, Bulgaria. Object of the statement: Wireless Headphones

The object of the statement described above is in compliance with the applicable security requirements in Schedule 1 of S.I. 2023 No. 1007 (Product Security). Where applicable, references to the relevant standards used in relation to which compliance is declared:

Defined support period for security updates: 2026-01-01. Additional information:

Note(s): Signed for and on behalf of: GL GRUP 2015 LTD.

ISED Canada Statement:


This device contains licence-exempt transmitter(s)/receiver(s) that comply with Innovation, Science and Economic Development Canada's licence-exempt RSS(s). Operation is subject to the following two conditions: this device may not cause interference and this device must accept any interference, including interference that may cause undesired operation of the device. Radiation Exposure: This equipment complies with Canada radiation Exposure limits set forth for an uncontrolled environment to maintain compliance with IC's RF Exposure guidelines. This equipment should be installed and operated with a minimum distance of 0mm the radiator your body. This device and its antenna(s) must not be co-located or operate in conjunction with any other antenna or transmitter.

FAQ

Q: What should I do if the earphones are not functioning properly?

A: Make sure to fully charge the case before first use as instructed in the manual. If issues persist, contact our support at info@powerlocus.com.

Documents / Resources

	PowerLocus Jumpy Open Ear Headphones [pdf] User Manual E18, 11.9, Jumpy Open Ear Headphones, Open Ear Headphones, Ear Headphones, Headphones
---	---

References

- [User Manual](#)

📁 PowerLocus

🔍 11.9, E18, Ear Headphones, headphones, Jumpy Open Ear Headphones, Open-Ear Headphones, PowerLocus

Leave a comment

Your email address will not be published. Required fields are marked *

Comment *

Name

Email

Website

☐ Save my name, email, and website in this browser for the next time I comment.

[Post Comment](#)

Search:

[Search](#)

[Manuals+](#) | [Upload](#) | [Deep Search](#) | [Privacy Policy](#) | [@manuals.plus](#) | [YouTube](#)

This website is an independent publication and is neither affiliated with nor endorsed by any of the trademark owners. The "Bluetooth®" word mark and logos are registered trademarks owned by Bluetooth SIG, Inc. The "Wi-Fi®" word mark and logos are registered trademarks owned by the Wi-Fi Alliance. Any use of these marks on this website does not imply any affiliation with or endorsement.