



PowerA XB1 Fusion Pro Wired Controller User Manual

[Home](#) » [PowerA](#) » PowerA XB1 Fusion Pro Wired Controller User Manual 



Contents

- 1 FRONT
- 2 SETUP
- 3 ANALOG STICK / ANTI-FRICTION RING REPLACEMENT
- 4 PRO PACK INSTALLATION/REMOVAL
- 5 MAPPING PRO PACK PADDLES
- 6 RESETTING THE PRO PACK PADDLES
- 7 3-WAY TRIGGER LOCK ADJUSTMENT
- 8 TROUBLESHOOTING
- 9 MOTION WARNING
- 10 FCC STATEMENT
- 11 CAN ICES-3(B)/NMB-3(B)
- 12 MANUFACTURED BY
- 13 CONTACT/SUPPORT
- 14 WARRANTY
- 15 AUSTRALIAN WARRANTY STATEMENT
- 16 AU WHOLESALE DISTRIBUTOR
- 17 ADDITIONAL LEGAL
- 18 REGIONAL COMPLIANCE SYMBOLS
- 19 DECLARATION OF CONFORMITY
- 20 Documents / Resources
 - 20.1 References
- 21 Related Posts

FRONT

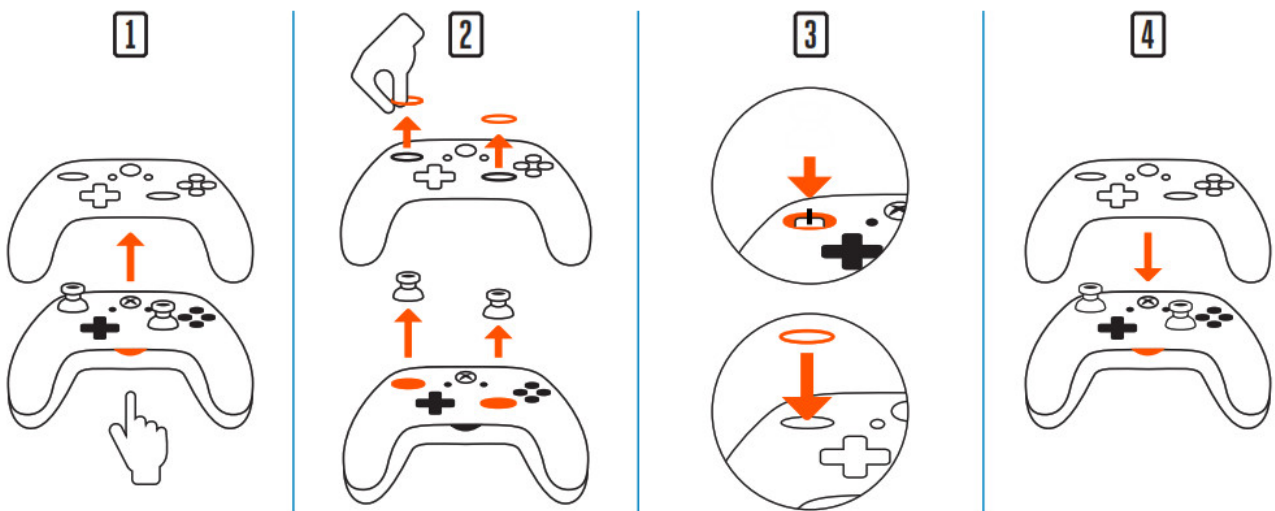




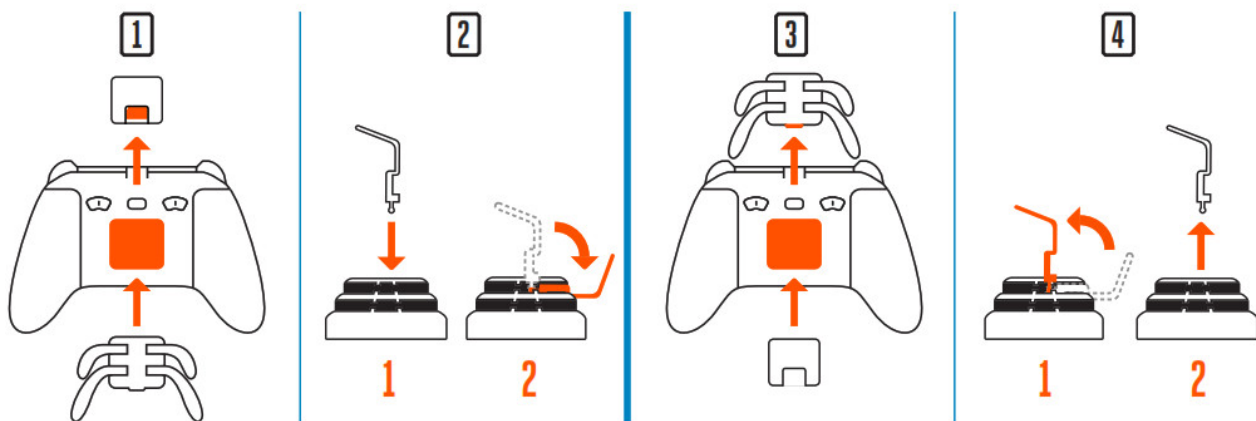
SETUP

1. Connect the USB cable into an available port on the box and into a snap-lock port on the controller.
If Xbox is OFF, press Xbox Button to power "ON". The controller's Power LED will illuminate.
2. For player and controller assignment, refer to the Xbox One user manual.
3. To remove the cable, squeeze two side buttons near the port and pull gently. Inline release plug is included closer to end of the cable that will disconnect when needed.

ANALOG STICK / ANTI-FRICTION RING REPLACEMENT

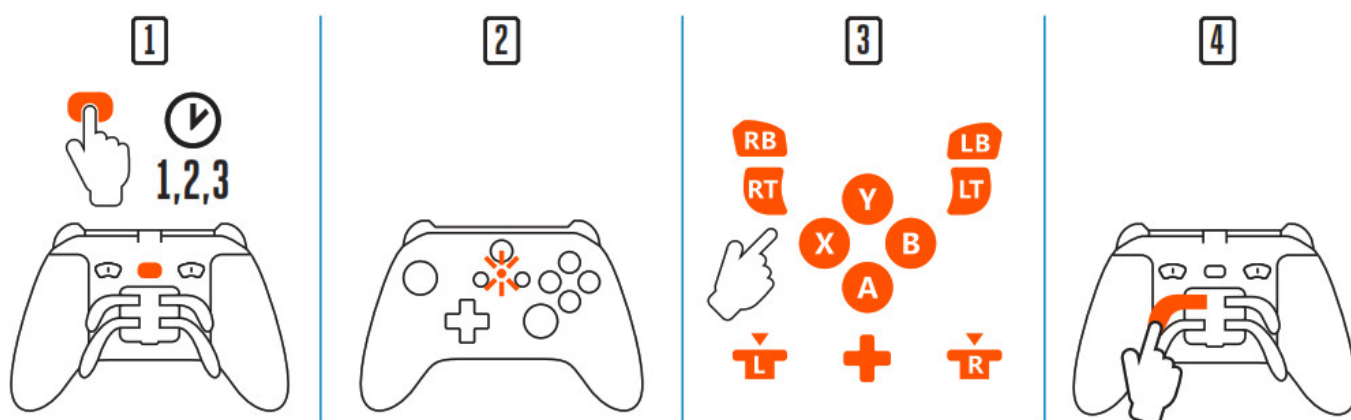


PRO PACK INSTALLATION/REMOVAL



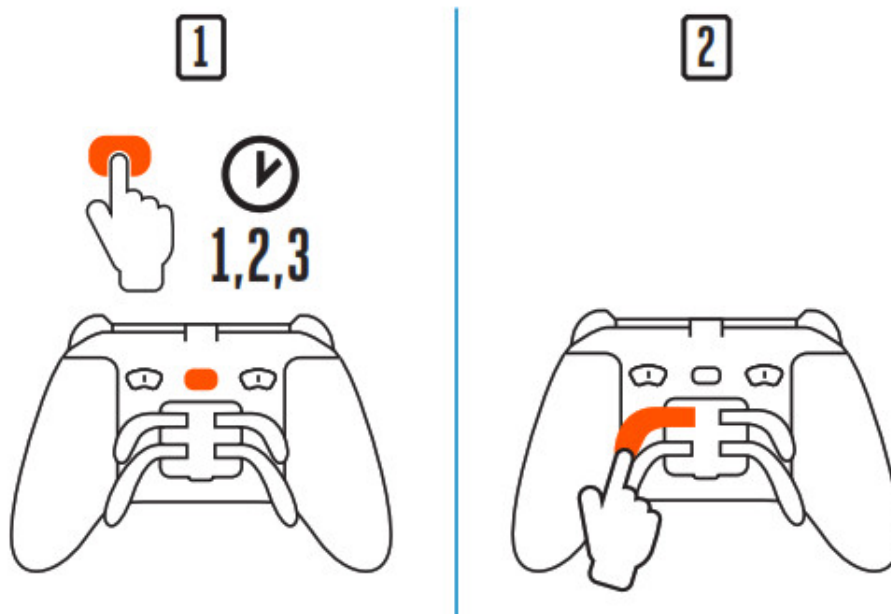
NOTE: Store all unused components in a protective case when not in use.

MAPPING PRO PACK PADDLES

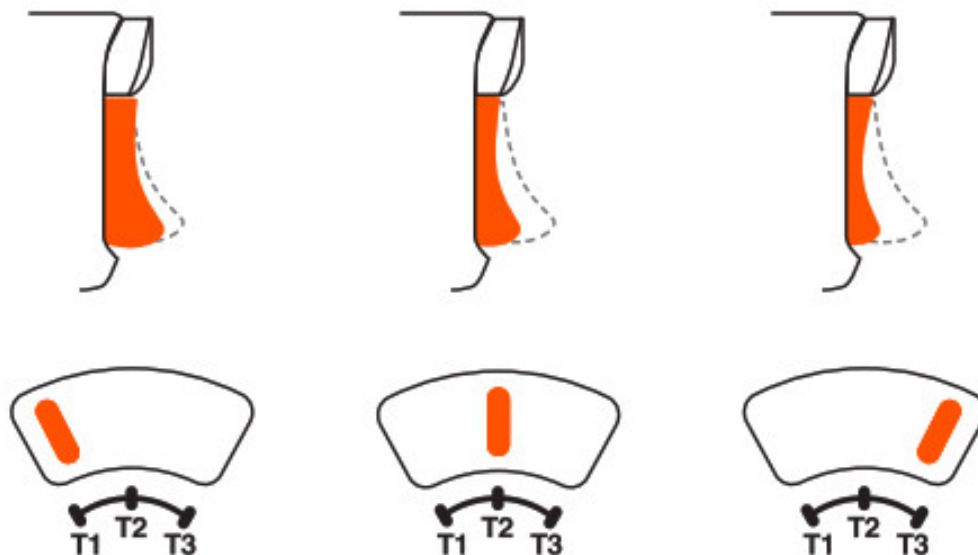


NOTE: Repeat for the remaining Pro Pack paddles. Pro Pack paddle assignments will remain in memory even after being disconnected.

RESETTING THE PRO PACK PADDLES



3-WAY TRIGGER LOCK ADJUSTMENT



TROUBLESHOOTING

For the latest FAQs, visit [PowerA.com/Support/](https://www.powera.com/support/)

Problem: Controller will not connect to the game console.

Solution: Confirm cable is properly connected to console. Confirm Inline Release Cable is properly connected.

Problem: Pro Pack paddles are not functioning properly.

Solution: Confirm Pro Pack is securely installed to the controller. Confirm Pro Pack paddles are securely installed. Review the “Mapping Pro Pack Paddles” section above.

Problem: Controller is connected but has no function.

Solution: Confirm you are using the Player #1 controller by checking the channel indicator on the controller. Confirm your Xbox One console is powered ON, and your TV is set to the proper video input.

For additional troubleshooting, refer to your Xbox One user guide.

MOTION WARNING

Playing video games can make your muscles, joints, skin, or eyes hurt. Follow these instructions to avoid problems such as tendinitis, carpal tunnel syndrome, skin irritation, or eyestrain:

- Avoid excessive play. Take a 10 to 15-minute break every hour, even if you don't think you need it. Parents should monitor their children for appropriate play.
- If your hands, wrists, arms, or eyes become tired or sore while playing, or if you feel symptoms such as tingling, numbness, burning or stiffness, stop and rest for several hours before playing again.
- If you continue to have any of the above symptoms or other discomforts during or after play, stop playing and see a doctor.

FCC STATEMENT

This device complies with Part 15 of the FCC Rules. Operation is subject to the following two conditions:

1. this device may not cause harmful interference, and
2. this device must accept any interference received, including interference that may cause undesired operation.

Warning: Changes or modifications to this unit not expressly approved by the party responsible for compliance could void the user's authority to operate the equipment. Note: This equipment has been tested and found to

comply with the limits for Class B digital devices, pursuant to Part 15 of the FCC Rules.

These limits are designed to provide reasonable protection against harmful interference in a residential installation. This equipment generates, uses, and can radiate radio frequency energy and, if not installed and used in accordance with the instructions, may cause harmful interference to radio communications. However, there is no guarantee that interference will not occur in a particular installation. If this equipment does cause harmful interference to radio or television reception, which can be determined by turning the equipment off and on, the user is encouraged to try to correct the interference by one or more of the following measures:

- Reorient or relocate the receiving antenna.
- Increase the separation between the equipment and receiver.
- Connect the equipment into an outlet on a circuit different from that to which the receiver is connected.
- Consult the dealer or an experienced radio/ TV technician for help.

CAN ICES-3(B)/NMB-3(B)

This device contains license-exempt transmitter(s)/receiver(s) that comply with Innovation, Science, and Economic Development Canada's license-exempt RSS(s). Operation is subject to the following two conditions:

1. This device may not cause interference;
2. This device must accept any interference, including interference that may cause undesired operation of the device.

MANUFACTURED BY

Bensussen Deutsch & Associates, LLC. (BDA, LLC.)
15525 Woodinville-Redmond Rd. NE Woodinville, WA 98072 | BDAINC.com | POWERA.com

CONTACT/SUPPORT

For support with your authentic PowerA accessories, please visit PowerA.com/Support.

WARRANTY

2-Year Limited Warranty: Visit PowerA.com/support for details.

AUSTRALIAN WARRANTY STATEMENT

This product comes with guarantees that cannot be excluded under the Australian Consumer Law. You are entitled to a replacement or refund for a major failure and for compensation for any other reasonably foreseeable loss or damage. You are also entitled to have the goods repaired or replaced if the goods fail to be of acceptable quality and the failure does not amount to a major failure. If purchased within Australia or New Zealand, this product comes with a one-year warranty from the date of purchase. Defects in the product must have appeared within one year from the date of purchase, in order to claim the warranty. All warranty claims must be facilitated back through the retailer of purchase in accordance with the retailer's return policies and procedures. Any expenses incurred, as a result of returning the product to the retailer of purchase are the full responsibility of the consumer.

AU WHOLESALE DISTRIBUTOR

ADDITIONAL LEGAL

PowerA and the PowerA logo are trademarks of Bensussen Deutsch and Associates, Inc. TM and © Bensussen Deutsch and Associates, Inc. This product is manufactured under license from Microsoft Corporation. Microsoft, Xbox, Xbox LIVE, Xbox One, and the Xbox logos are trademarks of the Microsoft group of companies. All other trademarks are the property of their respective owners.

REGIONAL COMPLIANCE SYMBOLS

More information is available via web-search of each symbol name.



The WEEE (Waste of electrical and electronic equipment) symbol requires battery disposal outside of other household waste per local regulations. Contact your city office, waste disposal service, or retailer for guidance.



CE (Conformité Européene aka European Conformity) is a certification mark that indicates conformity with health, safety, and environmental protection standards for products sold within the European Economic Area.



The Regulatory Compliance Mark is a visible indication of a product's compliance with all applicable ACMA (Australian Communications and Media Authority) regulatory arrangements, including all technical and record-keeping requirements regarding the electrical safety and/or electromagnetic compatibility (EMC).

DECLARATION OF CONFORMITY

Hereby, Bensussen Deutsch & Associates LLC at 15525 Woodinville-Redmond Road NE, Woodinville, WA 98072 USA, declares that this wired controller is in compliance with Directive 2014/30/EU. The full text of the EU Declaration of Conformity is available at the following internet address: PowerA.com/compliance

2-YEAR LIMITED WARRANTY

VISIT [POWERA.COM/SUPPORT](https://PowerA.COM/SUPPORT) FOR DETAILS.

BDA LLC., 15525 WOODINVILLE-REDMOND RD NE, WOODINVILLE, WA 98072

Fusion Pro Wired Controller| Pro Pack (with four removable paddles)

Documents / Resources



[PowerA XB1 Fusion Pro Wired Controller](#) [pdf] User Manual
XB1, Fusion Pro Wired Controller

References

- [BDA Home](#)
- bluemouth.com.au
- [llc.tm - This is a premium name](#)
- [PowerA | PowerA](#)
- [PowerA | PowerA](#)
- [Declaration of Conformity | PowerA](#)
- [Support | PowerA](#)
- [Support | PowerA](#)

