



PowerA Spectra Infinity Enhanced Wired Controller User Manual

[Home](#) » [PowerA](#) » PowerA Spectra Infinity Enhanced Wired Controller User Manual 



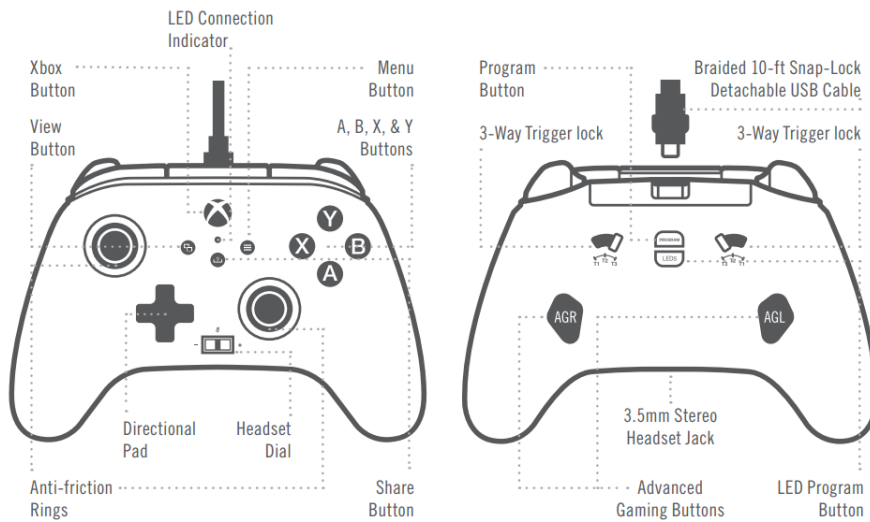
PowerA™

**Spectra Infinity
ENHANCED
WIRED
CONTROLLER**



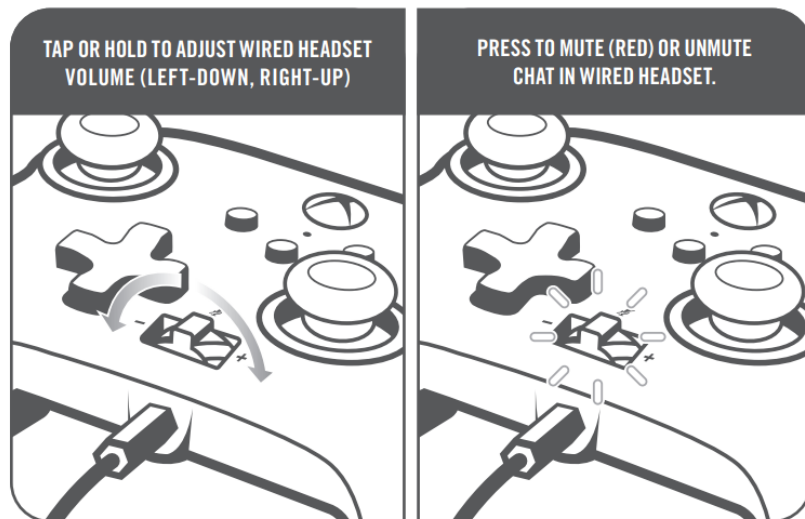
USER MANUAL
Manual de usuario

Customer Service



TWO YEAR LIMITED WARRANTY

For warranty details or support with your authentic PowerA accessories, please visit PowerA.com/Support.



CONTENTS

- Spectra Infinity Enhanced Wired Controller for Xbox Series X|S
- Braided 10ft Snap-Lock Detachable USB cable
- User Manual

SET UP

Connect the 10ft USB cable by plugging it into any available USB port on your Xbox console. Connect the other end to the Micro USB port on your PowerA Enhanced Spectra Infinity Wired Controller. Hold down the Xbox Button until your console powers "ON". The controller's LED Connection Indicator will illuminate to indicate your controller is connected.

NOTE: To remove the cable, squeeze two side buttons near the port and pull gently. USB cable also includes an inline release plug closer to the end of the cable that will disconnect when needed. For player and controller assignment reference your official Xbox user's manual.

Contents

- 1 LED PROGRAM FUNCTION
- 2 ASSIGNING ADVANCED GAMING BUTTONS
- 3 RESETTING ADVANCED GAMING BUTTONS
- 4 USING THE SHARE BUTTON
- 5 USING THE HEADSET DIAL
- 6 TROUBLESHOOTING
- 7 WARNING: READ BEFORE PLAYING
- 8 MOTION WARNING
- 9 FCC STATEMENT
 - 9.1 CAN ICES-003(B)/NMB-003(B)
 - 9.2 MANUFACTURED BY
 - 9.3 CONTACT/SUPPORT
 - 9.4 WARRANTY
- 10 AUSTRALIAN WARRANTY STATEMENT
- 11 Documents / Resources
- 12 Related Posts

LED PROGRAM FUNCTION

The controller has three separate light up Spectra Zones that you can customize:



1. To enter LED Program Mode, hold the LED button on the back of the controller for 2 seconds. The light piping around the top housing of the controller will blink, indicating that you're now in LED Program Mode.



2. The programmable Zone you're in will flash 3 times. To toggle through the 3 Zones, press "Right" on the D-Pad. Note that Zone One is the default starting zone.



3. Select one of the A/B/X/Y buttons to choose your color: 5 shades of green 5 shades of red 5 shades of blue 5 shades of yellow



4. Next, continue pressing the selected A/B/X/Y button to toggle through 5 shades of that color.



- Next, press “Left” on the D-Pad to program the zone’s light effect, either “breathing” or solid.



- You can also press “UP” and “DOWN” on the D-Pad to select one of ten brightness levels.



- To exit Program Mode, hold the LED button for 2 seconds. All 3 LED Zones will flash 3 times to indicate you are now out of LED Program Mode.



- To quickly turn off the LEDs completely, just press the LED Program Button once. Press again to turn the Spectra lighting feature back on.

TRIGGER LOCKS

- Adjust pull-distance of the triggers by sliding the lock switch on the back to the left or right
- Each trigger can be adjusted separately

ASSIGNING ADVANCED GAMING BUTTONS

- Press and hold the Program Button for 2-3 seconds on the back of the controller. The program LED indicator will flash, signaling the controller is in assign
- Press 1 of the following buttons (A/B/X/Y/RB/LB/RT/LT/ Left Stick Press/Right Stick Press/D-pad) to re-assign. Then press the Advanced Gaming Button (AGR or AGL) that you wish to assign. The Program LED indicator will stop flashing, signaling the Advanced Gaming Button has been
- Repeat for the remaining Advanced Gaming Button.

NOTE: Advanced Gaming Button assignments will remain in memory even after

RESETTING ADVANCED GAMING BUTTONS

- Hold the program button down for 2-3 seconds. The LED Connection Indicator will slowly flash, signaling the controller is in the program
- Press and hold the assigned AGR/AGL Button for 5 seconds to reset to no

USING THE SHARE BUTTON

Refer to Xbox documentation for details on functions and features related to the Share button.

USING THE HEADSET DIAL

Once you plug the 3.5mm jack from your headset into the controller, Dial will become active and the LED will turn red to indicate chat is muted. Press down on the dial to mute/ unmute chat. To adjust volume, tap left or right to adjust step by step, or press and hold left or right to adjust the volume to full up or fully down.

NOTE: Audio controls within Xbox Settings will take first priority, followed by the Headset dial, and finally any audio or mute controls on your headset. Refer to your Xbox and headset documentation for additional details.

TROUBLESHOOTING

For current FAQs, visit PowerA.com/support

Q: Controller will not connect to Xbox console?

A: Confirm your Xbox console is powered "ON".

A: Confirm your TV is set to the proper Video Input and that you can see the Xbox console interface on your TV screen. A: Confirm cable is properly connected to your Xbox console.

A: Confirm cable is properly connected to your PowerA Enhanced Wired Controller.

Q: Controller is connected but has no function?

A: Confirm you are using the Player #1 controller. For more troubleshooting refer to your Xbox console User Manual.

WARNING: READ BEFORE PLAYING

A very small percentage of individuals may experience epileptic seizures when exposed to certain light patterns or flashing lights. Exposure to certain patterns or while playing video games may induce an epileptic seizure in these individuals. Certain conditions may induce previously undetected epileptic symptoms even in persons who have no history for prior seizures of epilepsy.

If you, or anyone in your family, have an epileptic condition, consult your physician prior to playing. If you experience any of the following symptoms while playing a video game – dizziness, altered vision, eye or muscle twitches, loss of awareness, disorientation, any involuntary movement, or convulsions – IMMEDIATELY discontinue use and consult with your physician before resuming play.

MOTION WARNING

Playing video games can make your muscles, joints, skin, or eyes hurt. Follow these instructions to avoid problems such as tendinitis, carpal tunnel syndrome, skin irritation, or eyestrain:

- Avoid excessive Take a 10 to 15-minute break every hour, even if you don't think you need it. Parents should monitor their children for appropriate play.
- If your hands, wrists, arms, or eyes become tired or sore while playing, or if you feel symptoms such as tingling, numbness, burning, or stiffness, stop and rest for several hours before playing
- If you continue to have any of the above symptoms or other discomforts during or after play, stop playing and see a

FCC STATEMENT

This device complies with Part 15 of the FCC Rules. Operation is subject to the following two conditions:

1. this device may not cause harmful interference, and
2. this device must accept any interference received, including interference that may cause undesired operation

WARNING: Changes or modifications to this unit not expressly approved by the party responsible for compliance could void the user's authority to operate the equipment.

NOTE: This equipment has been tested and found to comply with the limits for Class B digital devices, pursuant to Part 15 of the FCC Rules.

CAN ICES-003(B)/NMB-003(B)

This device contains license-exempt transmitter(s)/ receiver(s) that comply with Innovation, Science, and Economic Development Canada's license-exempt RSS(s). Operation is subject to the following two conditions:

1. This device may not cause interference;
2. This device must accept any interference, including interference that may cause undesired operation of the

MANUFACTURED BY

ACCO Brands USA LLC 4 Corporate Way, Lake Zurich, IL 60047 [ACCOBRANDS.com](https://www.ACCOBRANDS.com) | [POWERA.com](https://www.POWERA.com) MADE IN CHINA

CONTACT/SUPPORT

For support with your authentic PowerA accessories, please visit **PowerA.com/Support**.

WARRANTY

2-Year Limited Warranty: Visit **PowerA.com** for details.

AUSTRALIAN WARRANTY STATEMENT

This product comes with guarantees that cannot be excluded under the Australian Consumer Law. You are entitled to a replacement or refund for a major failure and for compensation for any other reasonably foreseeable loss or damage. You are also entitled to have the goods repaired or replaced if the goods fail to be of acceptable quality and the failure does not amount to a major failure. If purchased within Australia or New Zealand, this product comes with a one-year warranty from the date of purchase. Defects in the product must have appeared within one year from the date of purchase, in order to claim the warranty. All warranty claims must be facilitated back through the retailer of purchase in accordance with the retailer's return policies and procedures. Any expenses incurred, as a result of returning the product to the retailer of purchase are the full responsibility of the consumer.

AU WHOLESALE DISTRIBUTOR

Level 2, 2 Darling Street South Yarra, Australia VIC 3141 [bluemouth.com.au](https://www.bluemouth.com.au) | Email: support@bluemouth.com.au +61 (3) 9867 2666

ADDITIONAL LEGAL

© 2021 ACCO Brands USA LLC. PowerA and PowerA Logo are trademarks of ACCO Brands Corporation. Microsoft, Xbox, Xbox "Sphere" Design, Xbox Series X|S, Xbox One, and Windows are trademarks of the Microsoft group of companies. All other trademarks are the property of their respective owners.

REGIONAL COMPLIANCE SYMBOLS

More information is available via web-search of each symbol name.



The **WEEE** (Waste of electrical and electronic equipment) symbol requires battery disposal outside of other household waste per local regulations. Contact your city office, waste disposal service, or retailer for guidance.



The **CE** (Conformité Européenne aka European Conformity) mark is a declaration from the manufacturer that the product meets applicable European Directives and Regulations for health, safety, and environmental protection.



The **UKCA** (UK Conformity Assessment) mark is a declaration from the manufacturer that the product meets applicable UK Regulations for health, safety, and environmental protection.



The **Regulatory Compliance Mark** is a visible indication of a product's compliance with all applicable ACMA (Australian Communications and Media Authority) regulatory arrangements, including all technical and record-keeping requirements regarding the electrical safety and/or electromagnetic compatibility (EMC).

DECLARATION OF CONFORMITY

Hereby, ACCO Brands USA LLC at 4 Corporate Way, Lake Zurich, IL 60047 USA, declares that this wired controller is in compliance with Directive 2014/30/EU. The full text of the EU Declaration of Conformity is available at the following internet address: PowerA.com/compliance

Documents / Resources

	<p>PowerA Spectra Infinity Enhanced Wired Controller [pdf] User Manual Spectra Infinity, Enhanced Wired Controller, Spectra Infinity Enhanced Wired Controller</p>
--	----------------------------------------------------------------------------------------------------------------------------------------------------------------------------------------