

[Skip to content](#)

Manuals+

User Manuals Simplified.



PowerA FUSION PRO Wireless Controller User Manual

[Home](#) » [PowerA](#) » PowerA FUSION PRO Wireless Controller User Manual

Contents [hide](#)

[1 PowerA FUSION PRO Wireless Controller](#)

[2 FRONT](#)

[3 BACK](#)

[4 THUMBSTICK / FACEPLATE REPLACEMENT](#)

[5 MAPPING PRO PACK PADDLES](#)

[6 RESETTING THE PRO PACK PADDLES](#)

[7 PRO PACK INSTALLATION/REMOVAL](#)

[8 SETUP](#)

[9 TROUBLESHOOTING](#)

[10 BATTERY WARNING – CAUTION](#)

[11 WARRANTY](#)

[12 Documents / Resources](#)



PowerA FUSION PRO Wireless Controller



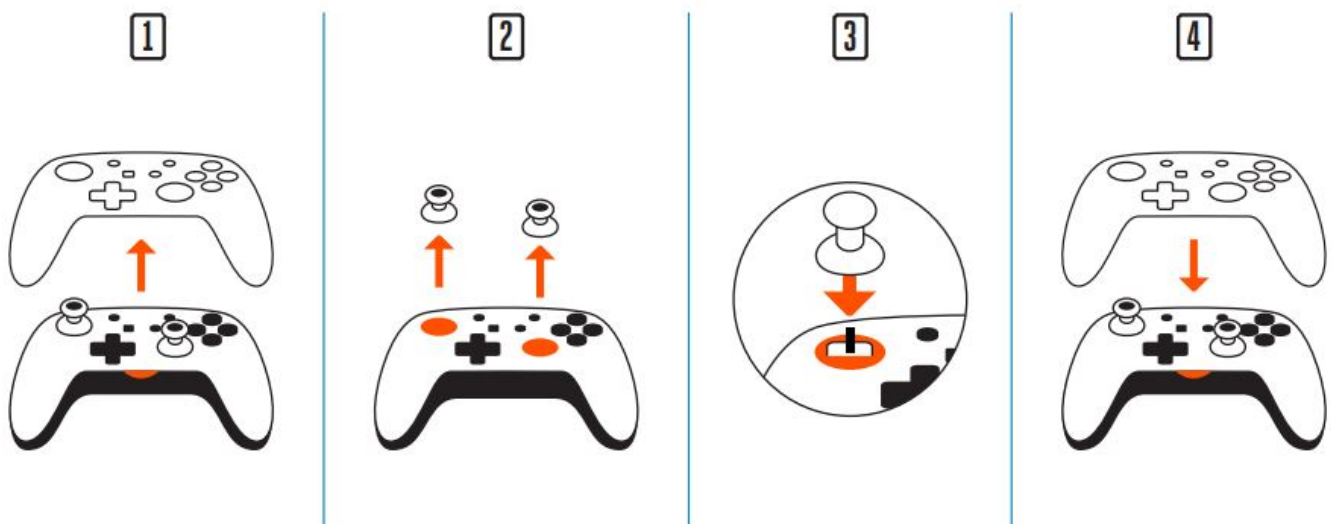
FRONT



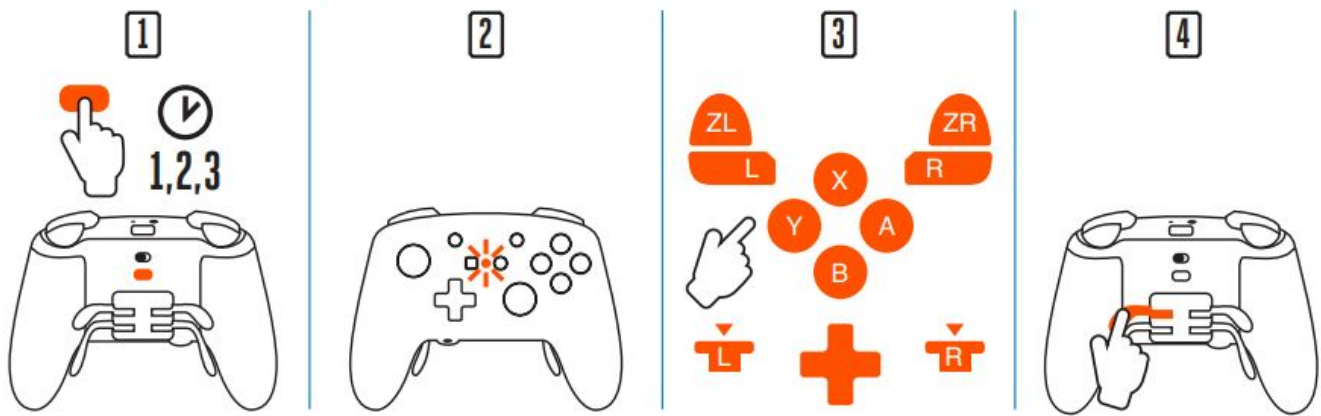
BACK



THUMBSTICK / FACEPLATE REPLACEMENT

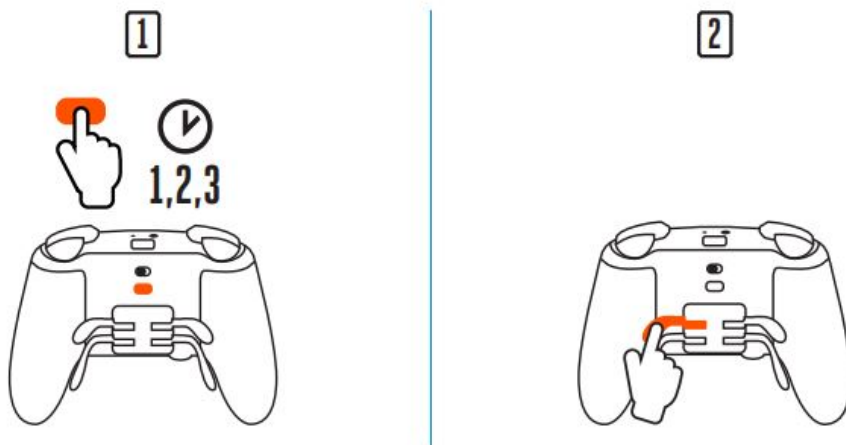


MAPPING PRO PACK PADDLES

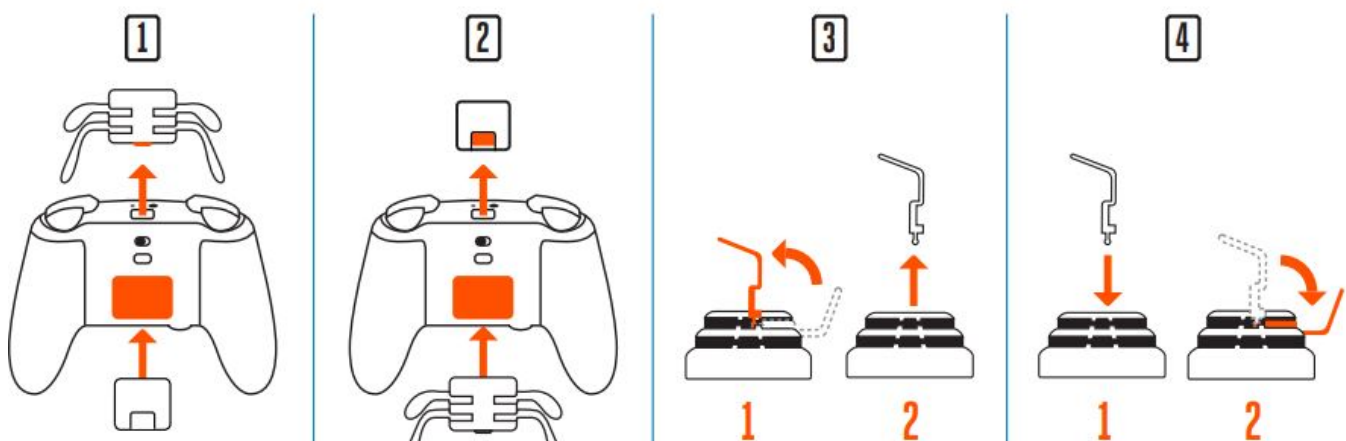


NOTE: Repeat for the remaining Pro Pack paddles. Pro Pack paddle assignments will remain in memory even after being disconnected.

RESETTING THE PRO PACK PADDLES



PRO PACK INSTALLATION/REMOVAL



NOTE: Store all unused components in a protective case when not in use.

SETUP

RECHARGEABLE 900 MAH INTERNAL BATTERY

Controller was charged at the factory, but if top LED is flashing red, plug in USB cable to charge prior to initial pairing. Get up to 30 hours of game play when fully charged (other variables affect play time).

NOTE: Remember to charge controller at least once every 45-60 days (regardless of use) so battery retains ability to charge. Battery capacity will gradually reduce over time with repeated charging.

WIRELESS PAIRING

From the HOME Menu, select 'Controllers,' then 'Change Grip and Order.' While the following screen is displayed, press and hold down the SYNC Button for at least one second on the controller you wish to pair.

NOTE: After controller is paired once, it will auto-connect next time.

UNDERSTANDING LED INDICATORS

1. The top LED near the USB port will flash red when the internal battery is near depletion. Plug in USB cable to charge once indicator is flashing for uninterrupted gameplay. LED will turn solid red during charging, and off once fully charged.
2. The front LED (between Capture and Home buttons) will flash during programming of Advanced Gaming Buttons.
3. The four LEDs on the bottom indicate Power & player number 1-8, and will cycle from left to right during wireless pairing.

TROUBLESHOOTING

For latest FAQs, visit PowerA.com/Support

PROBLEM: My FUSION Pro Wireless Controller is not pairing.

SOLUTION: Confirm batteries are charged by plugging in USB-C cable.

SOLUTION: Confirm you are following the 'Wireless Pairing' process.

SOLUTION: Insert paper clip into Factory Reset Hole as marked above to reset controller to factory settings.

BATTERY WARNING – CAUTION

- Don't attempt to replace the rechargeable battery yourself. There is a serious risk of explosion if the battery is incorrectly replaced.
- The lithium-ion battery in your device should be serviced or recycled by PowerA, or an authorized provider and must be recycled or disposed of separately from household waste. Dispose of batteries according to your local environment laws and guidelines.
- Disposal of a battery or a controller that contains batteries into a fire, or mechanically crushing or cutting of a battery, can result in an explosion.
- Leaving a battery or a controller that contains batteries in extremely high-temperature environment can result in an explosion or leakage of flammable liquid or gas.
- A battery or controller that contains batteries that is subjected to extremely low air pressure may result in an explosion or leakage of flammable liquid or gas.
- Don't use the rechargeable battery in a location where there is a lot of static electricity, as the internal safety functions may be damaged, causing a dangerous situation.
- In case any electrolytes get into the eyes due to battery leakage, do not rub your eyes! Instead, immediately rinse your eyes with clean running water and seek medical attention right away.
- If the battery gives off an odor, generates heat, or in any way appears abnormal during use, recharging or storage, immediately remove the controller from the battery charger and place it in a secure container such as a metal box.

MOTION WARNING

Playing video games can make your muscles, joints, skin or eyes hurt. Follow these instructions to avoid problems such as tendinitis, carpal tunnel syndrome, skin irritation or eyestrain:

- Avoid excessive play. Take a 10 to 15 minute break every hour, even if you don't think you need it. Parents should monitor their children for appropriate play.
- If your hands, wrists, arms or eyes become tired or sore while playing, or if you feel symptoms such as tingling, numbness, burning or stiffness, stop and rest for several hours before playing again.
- If you continue to have any of the above symptoms or other discomfort during or after play, stop playing and see a doctor.

FCC STATEMENT

This device complies with Part 15 of the FCC Rules. Operation is subject to the following two conditions: (1) this device may not cause harmful interference, and (2) this device must accept any interference received, including interference that may cause undesired operation.

WARNING: Changes or modifications to this unit not expressly approved by the party responsible for compliance could void the user's authority to operate the equipment.

NOTE: This equipment has been tested and found to comply with the limits for Class B digital device, pursuant to Part 15 of the FCC Rules. These limits are designed to provide reasonable protection against harmful interference in a residential installation. This equipment generates, uses and can radiate radio frequency energy and, if not installed and used in

accordance with the instructions, may cause harmful interference to radio communications. However, there is no guarantee that interference will not occur in a particular installation. If this equipment does cause harmful interference to radio or television reception, which can be determined by turning the equipment off and on, the user is encouraged to try to correct the interference by one or more of the following measures:

- Reorient or relocate the receiving antenna.
- Increase the separation between the equipment and receiver.
- Connect the equipment into an outlet on a circuit different from that to which the receiver is connected.
- Consult the dealer or an experienced radio/TV technician for help.

CAN ICES-003(B)/NMB-003(B)

This device contains licence-exempt transmitter(s)/receiver(s) that comply with Innovation, Science and Economic Development Canada's licence-exempt RSS(s). Operation is subject to the following two conditions:

1. This device may not cause interference;
2. This device must accept any interference, including interference that may cause undesired operation of the device

CONTACT/SUPPORT

For support with your authentic PowerA accessories, please visit PowerA.com/Support.

MANUFACTURED BY

ACCO Brands USA LLC, 4 Corporate Way, Lake Zurich, IL 60047
ACCOBRANDS.com | POWERA.com | Made in China

WARRANTY

2-Year Limited Warranty: Visit PowerA.com/support for details.

AUSTRALIAN WARRANTY STATEMENT

This product comes with guarantees that cannot be excluded under the Australian Consumer Law. You are entitled to a replacement or refund for a major failure and for compensation for any other reasonably foreseeable loss or damage. You are also entitled to have the goods repaired or replaced if the goods fail to be of acceptable quality and the failure does not amount to a major failure. If purchased within Australia or New Zealand, this product comes with a One-year warranty from date of purchase. Defects in the product must have appeared within One year from date of purchase, in order to claim the warranty. All warranty claims must be facilitated back through the retailer of purchase in accordance with the retailer's return policies and procedures. Any expenses incurred, as a result of returning the product to the retailer of purchase are the full responsibility of the consumer.

AU WHOLESALE DISTRIBUTOR

Level 2, 2 Darling Street South Yarra, Australia VIC 3141
[bluemouth.com.au](mailto:support@bluemouth.com.au) Email: support@bluemouth.com.au +61 (3) 9867 266

ADDITIONAL LEGAL

© 2021 ACCO Brands USA LLC. PowerA and PowerA Logo are trademarks of ACCO Brands Corporation. Nintendo Switch is a trademark of Nintendo. Licensed by Nintendo. All rights reserved. All other trademarks are the property of their respective owners.

REGIONAL COMPLIANCE SYMBOLS

More information is available via web-search of each symbol name.

The WEEE (Waste of electrical and electronic equipment) symbol requires battery disposal outside of other household waste per local regulations. Contact your city office, waste disposal service, or retailer for guidance.

The CE (Conformité Européene aka European Conformity) mark is a declaration from the manufacturer that the product meets applicable European Directives and Regulations for health, safety, and environmental protection.

The UKCA (UK Conformity Assessment) mark is a declaration from the manufacturer that the product meets applicable UK Regulations for health, safety, and environmental protection.

The Regulatory Compliance Mark is a visible indication of a product's compliance with all applicable ACMA (Australian Communications and Media Authority) regulatory arrangements, including all technical and record-keeping requirements regarding the electrical safety and/or electromagnetic compatibility (EMC).

DECLARATION OF CONFORMITY

Hereby, ACCO Brands USA LLC at 4 Corporate Way, Lake Zurich, IL 60047 USA, declares that this wireless controller is in compliance with Directive 2014/53/EU. The full text of the EU Declaration of Conformity is available at the following internet address: PowerA.com/compliance

WIRELESS RATING FOR EU COMPLIANCE

FREQUENCY RANGE: 2.4 – 2.4835GHz | MAX E.I.R.P.: < 10dBm for EU
OPERATION TEMPERATURE: 10 – 45°C

Documents / Resources



[PowerA FUSION PRO Wireless Controller](#) [pdf] User Manual
PowerA, FUSION PRO, Wireless, Controller, Nintendo Switch, 1515672-01

[Manuals+](#),

- [home](#)
- [privacy](#)