



POWER TECHNOLOGY M5-SOL-SYS Sensor Gateway Installation Guide

[Home](#) » [Power Technology](#) » POWER TECHNOLOGY M5-SOL-SYS Sensor Gateway Installation Guide 

POWER TECHNOLOGY M5-SOL-SYS Sensor Gateway Installation Guide

EASY INSTALL GUIDE: M5/SOL-SYS

1. Unpack & Open Up the Metron5

Place unit on a flat surface. To open, loosen the 2 nylon screws in the bottom corners of the Metron5 and 4 screws around battery enclosure.

Allen key and Pozi / Phillips head screwdriver required.



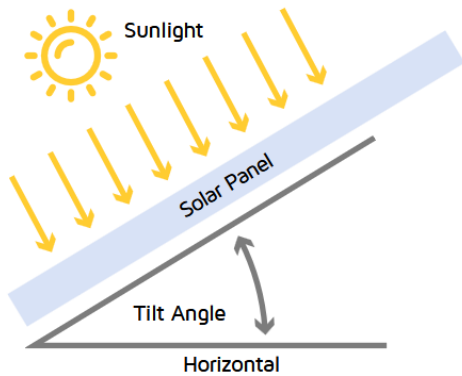
2. Mount the Solar Panel

Solar panel comes attached to a mounting bracket. The panel must face directly south and have a view of at least 100° of unobstructed sky.

The panel should be tilted at an angle 10° to 15° plus the site's latitude from the horizontal to achieve maximum

sun exposure (example overleaf).

The higher the cell, the better.



3. Mount the Metron5

Ideally a flat surface such as a wall/ DIN railing/Unistrut railing.

Avoid mounting inside metal cabinets or underground (could reduce signal).

There are pre-drilled holes for easy mounting.



4. Connect the Battery

Ensure the highlighted switch is positioned at “Solar”. Remove the white plastic cover from the battery terminals.

Use the loose black and red wires and slide on to connect to the battery terminals.

Maintain polarity:

Black to black (-). Red to red (+).



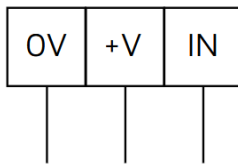
5. Connect the Sensor(s)

The inputs shown in the blue box connect directly to the inputs in the yellow box on the Metron5 above. Run the sensor cable(s) through the lower unit's glands.

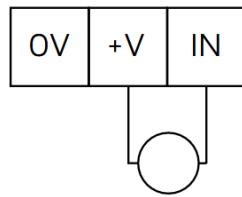
Unplug the green connector(s) and wire in as required. Plug the connector(s) back into the correct input channel and tighten the gland. Ensure cable is through the gland.

Reattach all lids and take care to tighten screws to ensure waterproof IP67 rating is maintained.

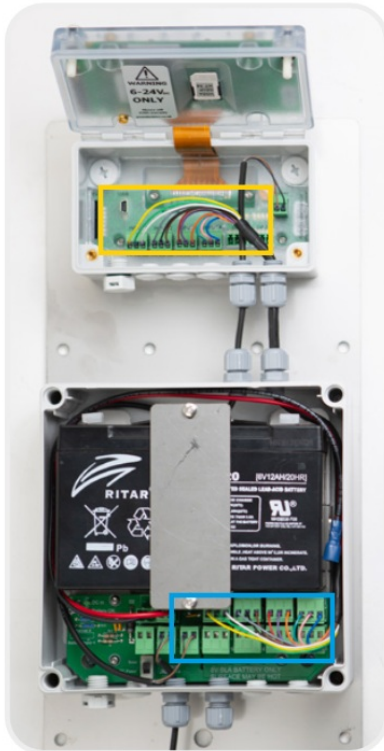
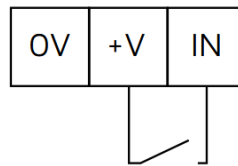
0-10 Volt DC 3
wire sensor



4-20mA 2 wire sensor
that requires power



Volt free
contacts

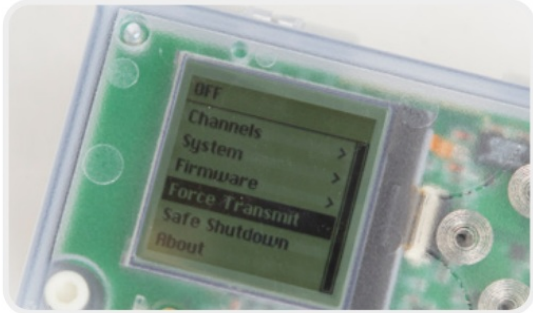
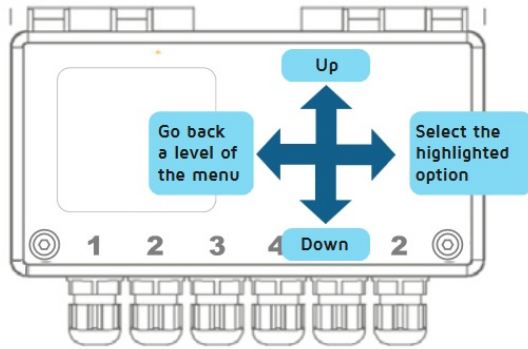


6. Navigate the Metron5

Press any button to wake the Metron5. Press left to cycle channels for immediate reading (config. dependent) or enter PIN (1234) and press right after 4th digit to enter homepage.

Move down to Force Transmit and right to select. Watch the progress bar and wait for the unit to transmit. Once complete, data can be viewed on MetronView. The unit will countdown for 45 seconds, then enter Run Mode. Screen will turn off.

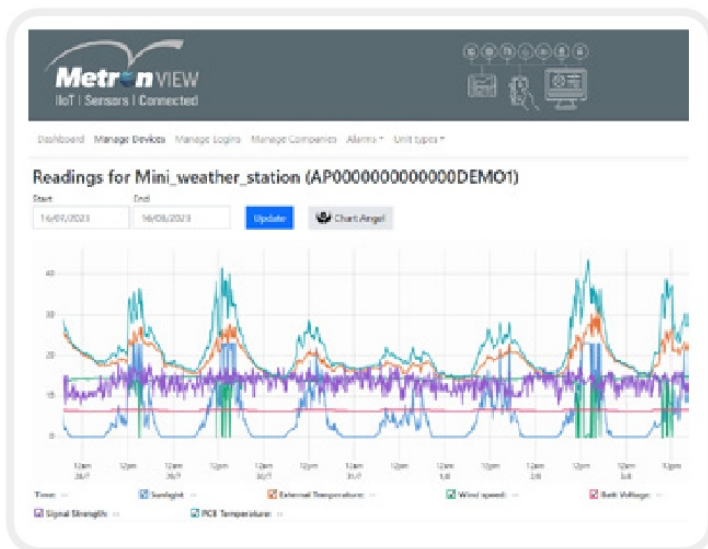
For live channel readings, channels can be selected from the menu by pressing right on Channels and then Read Now.



7. View Data

Visit: 2020.metronview.com

Once logged in, a summary of the units will be visible. Click view to the left of the device's name to see the historical data.



8. Programming

Units can be remotely programmed from MetronView. It is possible to change how often readings are taken & sent, alter scaling and alarm thresholds for each input channel and much more.

To make changes contact PowTechnology support.

The configuration will be held on the server and downloaded to the device when it next communicates.

Select 'Force transmit' rather than waiting for the next time the device transmits in order to reconfigure sooner.

Note

Failure to mount the solar panel exactly in accordance with the aforementioned rules may result in the unit failing during mid-Winter. If the power drain is greater than expected (from poor signal or lots of retries), a 2nd solar panel may be required.

Common Latitudes:

- London: 51.5°; Cardiff: 51.5°; Birmingham: 52.5°;
Leeds: 54.0°; Belfast: 54.5°; Edinburgh: 56.0°; Aberdeen: 57.0°
- Example calculation:
London = 51.5° + 10 = **61.5°** tilt angle from the horizontal



Phone: **+44 (0) 1827 310666**
Email: support@powtechnology.com



support@powtechnology.com

Contents

- [1 Documents / Resources](#)
 - [1.1 References](#)

Documents / Resources

	<p>POWER TECHNOLOGY M5-SOL-SYS Sensor Gateway [pdf] Installation Guide M5-SOL-SYS, M5-SOL-SYS Sensor Gateway, M5-SOL-SYS, Sensor Gateway, Gateway</p>
--	--

References

- [Metron VIEW](#)
- [User Manual](#)

[Manuals+](#), [Privacy Policy](#)

This website is an independent publication and is neither affiliated with nor endorsed by any of the trademark owners. The "Bluetooth®" word mark and logos are registered trademarks owned by Bluetooth SIG, Inc. The "Wi-Fi®" word mark and logos are registered trademarks owned by the Wi-Fi Alliance. Any use of these marks on this website does not imply any affiliation with or endorsement.