



power soak 34201 Power Prep Intro Instruction Manual

[Home](#) » [power soak](#) » power soak 34201 Power Prep Intro Instruction Manual 



34201 Power Prep Intro Instruction Manual



PART NUMBER 34201, REV. D (07/20)
This manual provides information for:
POWER PREP INTRO

Contents

- 1 OPERATOR MANUAL
- 2 INTRODUCTION AND CONVENTIONS
- 3 OPERATING INSTRUCTIONS
- 4 INSTALLATION
- 5 PREVENTATIVE MAINTENANCE
- 6 TROUBLESHOOTING
- 7 WARRANTY
- 8 Documents / Resources
 - 8.1 References
- 9 Related Posts

OPERATOR MANUAL

IMPORTANT INFORMATION, KEEP FOR THE OPERATOR
888-994-7636, fax 888-864-7636

unifiedbrands.net



Unified brands

THIS MANUAL MUST BE RETAINED FOR FUTURE REFERENCE. READ, UNDERSTAND AND FOLLOW THE INSTRUCTIONS AND WARNINGS CONTAINED IN THIS MANUAL.

NOTIFY CARRIER OF DAMAGE AT ONCE It is the responsibility of the consignee to inspect the container upon receipt of same and to determine the possibility of any damage, including concealed damage. Unified Brands suggests that if you are suspicious of damage make a notation on the delivery receipt. It will be the responsibility of the consignee to file a claim with the carrier. We recommend that you do so at once.

Manufacture Service/Questions 888-994-7636.

INTRODUCTION AND CONVENTIONS

PRODUCT INTRODUCTION

Thank you for purchasing a Power Prep Intro fruit and vegetable washing system. Your new Power Prep Intro washing system will provide years of dependable, efficient and trouble-free service.

As a Power Prep Intro owner, you will benefit in numerous ways:

- Your produce washing operation will be more efficient
- Your produce will more free of soil
- Your produce will harbor fewer microbes
- Your water usage will decrease
- Your produce washing hours will decrease and employee morale will increase

Every system is manufactured to last, with only high-quality, heavy-duty, 14 gauge stainless steel used in its construction. All electrical components used in a Power Prep Intro system are of the highest quality. The faucet and drain are designed for quick filling and emptying of the system's sink.

At Unified Brands, we take pride in manufacturing the Power Prep Intro and are committed to standing behind our customers and products 100%. Should you ever need assistance, please contact us directly at the factory by dialing 888-994-7636 or fax: 601-371-9732.

PRODUCE WASHING CHEMICALS AND ANTIMICROBIALS

The produce wash product you select is best if it:

- Requires a minimal wash time, ideally, two minutes or less

- Requires no rinsing
- Is non-corrosive when properly diluted
- Is dispensed through fixed dilution rate equipment
- Is FDA and/or EPA approved for both whole and cut fruit and vegetables

Consult your chemical provider for a suitable product.

EXPLANATION OF WARNING MESSAGES

Read, understand and follow all DANGER, WARNING, and CAUTION messages located in this guide and on the equipment.



Danger

Personal Injury and Property Damage hazard.

It May result in serious injury or death.

May cause extensive equipment damage.



Warning

Property Damage Hazard.

May result in property or equipment damage.



Chemical Hazard

It May result in serious injury or death. Instructions, labels, and Material Safety Data Sheets (MSDSs) should be supplied with all produce treating chemicals.

The manufacturers, importers, and distributors of your treating chemicals are responsible for providing this information.

Unified Brands is not a manufacturer, importer, or distributor of antimicrobials.

Unified Brands, Inc. will not make specific brand recommendations for these chemicals.



The information in this document is Confidential and shall not be disclosed to any third party without the express written consent of Unified Brands. Information contained in this document is known to be current and accurate at the time of printing/creation. Unified Brands recommends referencing our product line websites, unifiedbrands.net, for the most updated product information and specifications. © 2022 Unified Brands. All Rights Reserved.

OPERATING INSTRUCTIONS

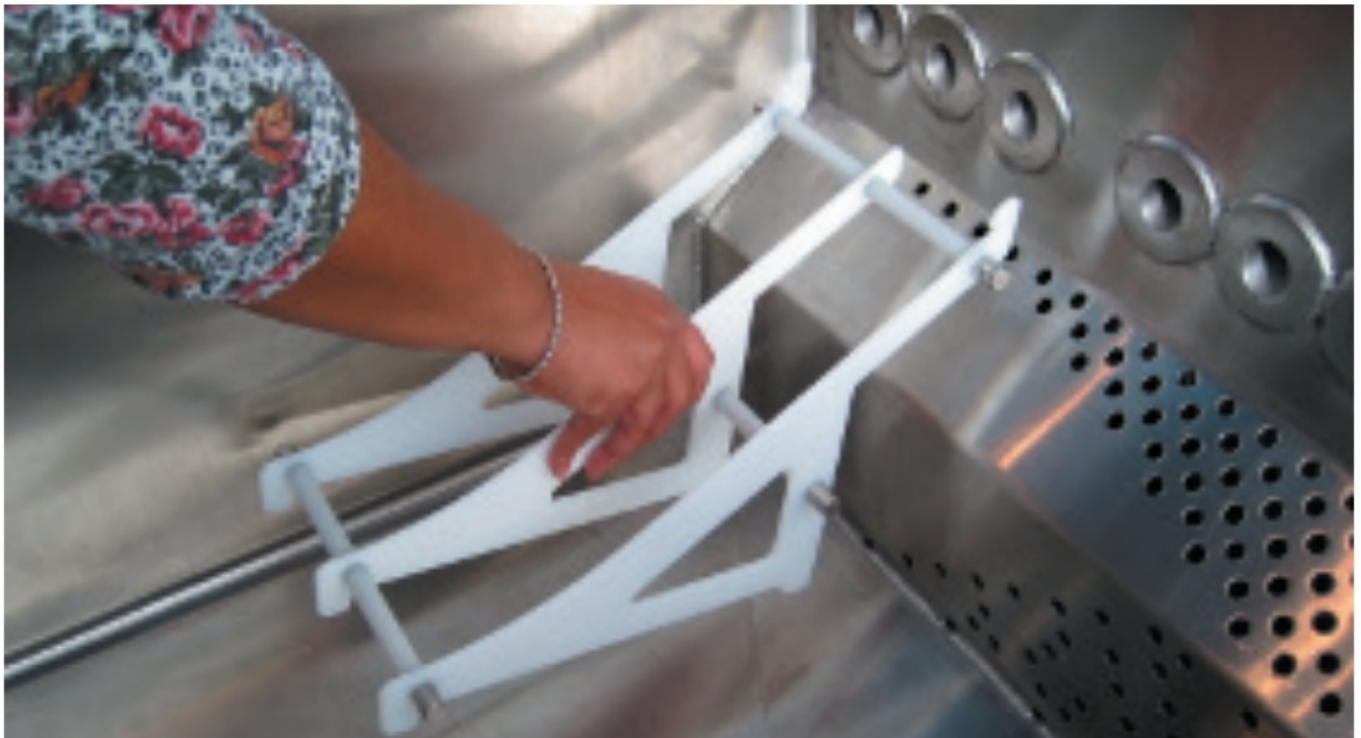
PLACING THE WASH COMPONENTS

Begin by removing any debris left from previous batches of produce. Disinfect all work surfaces according to the standard practices of your institution.



Rib Sets

Once the system is clean, the wash components can be installed. Begin by placing a rear rib set against one of the rear corners of the sink.



Place the other rear rib sets against the back wall of the sink leaving a finger-size gap between them.

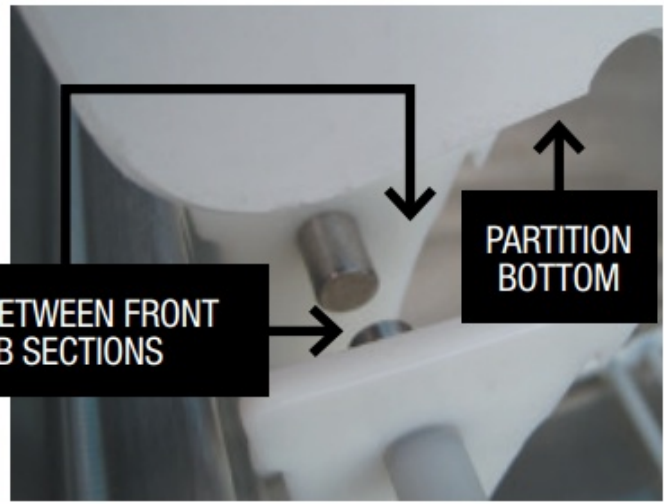


When you have placed all of the rear rib sets, begin placing the front rib sets against the front wall of the sink. As with the rear rib sets, place the first front rib set against a corner, and leave a finger-size gap between it and the next front rib set.



Partitions

Next, place partitions in the gaps between the front and rear pairs of rib sets. Make sure the partitions go all the way down and are not snagged on the ends of the rib sets.



Continue until all three partitions are in place. It will be necessary to push all previously placed components together to make room for the final partition.



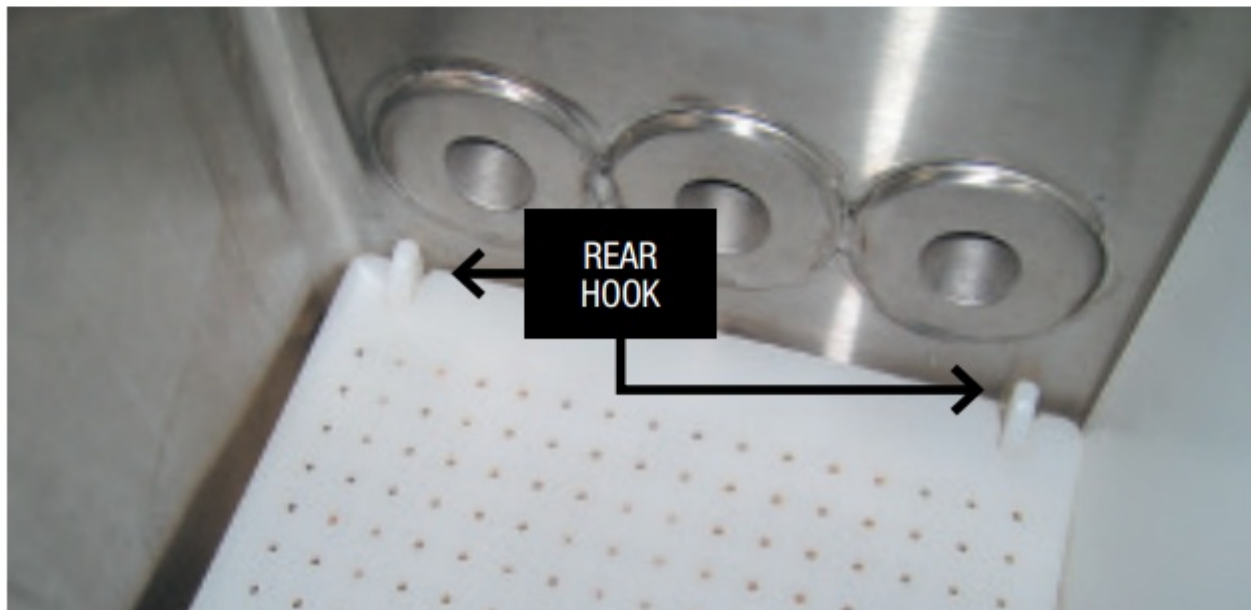
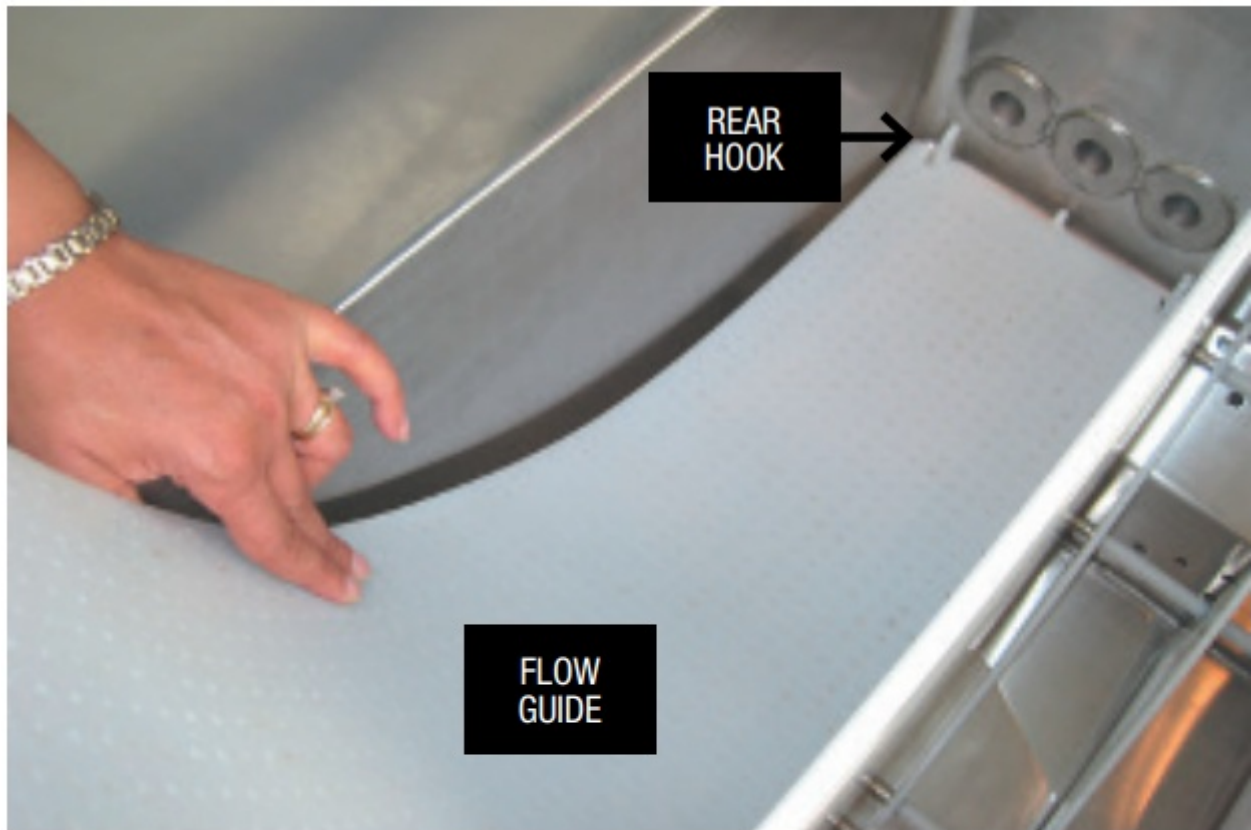
Flow Guides

Once all the partitions are in place, the flow guides can be installed. Start by positioning a notched end of the flow

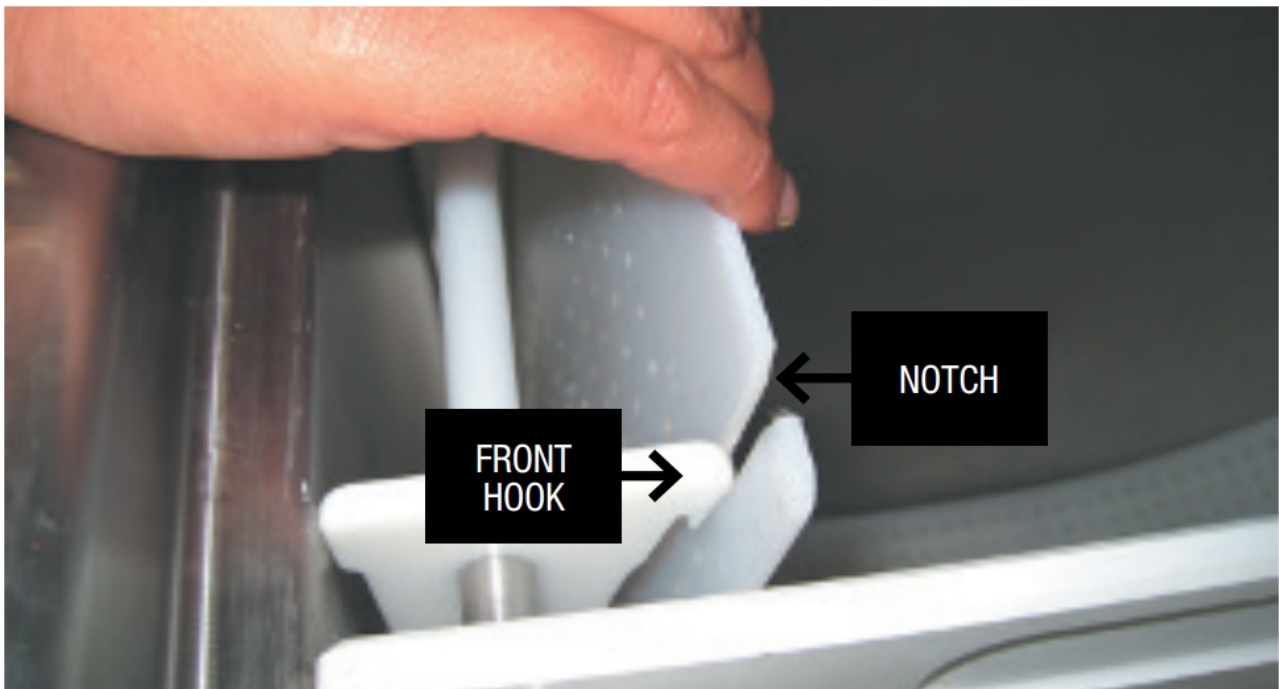
guide adjacent to the hooks of the rear rib set.



Begin bending the flow guide to the shape of the front rib set, and allow the notches of the flow guide to engaging the hooks of the rear rib set.



Continue to push the flow guide down against the rib sets until the notched end of the flow guide nearest you is adjacent to the hooks of the front rib set.



While holding the flow guide against the front rib set, rock the front rib set and the end of the flow guide away from you until the notches in the flow guide engage the hooks of the front rib set. Gently release the components until the front rib set is once again touching the front wall of the sink.



Repeat the process until all flow guides are in place.



The wash components are now in place, and the Power Prep Intro is ready for use.

FILLING THE POWER PREP INTRO

Produce treating chemicals are dispensed into the wash water as the Power Prep Intro is filled. Consult your chemical provider for details about the equipment they can offer. A typical dispensing system is shown here

**TREATED WATER ENTERING
THE WASH SINK**



Fill the sink until the solution has reached the water level mark in the sink.

**EMBOSED WATER
LEVEL MARK**



Turn the switch to the ON position to start the pump.

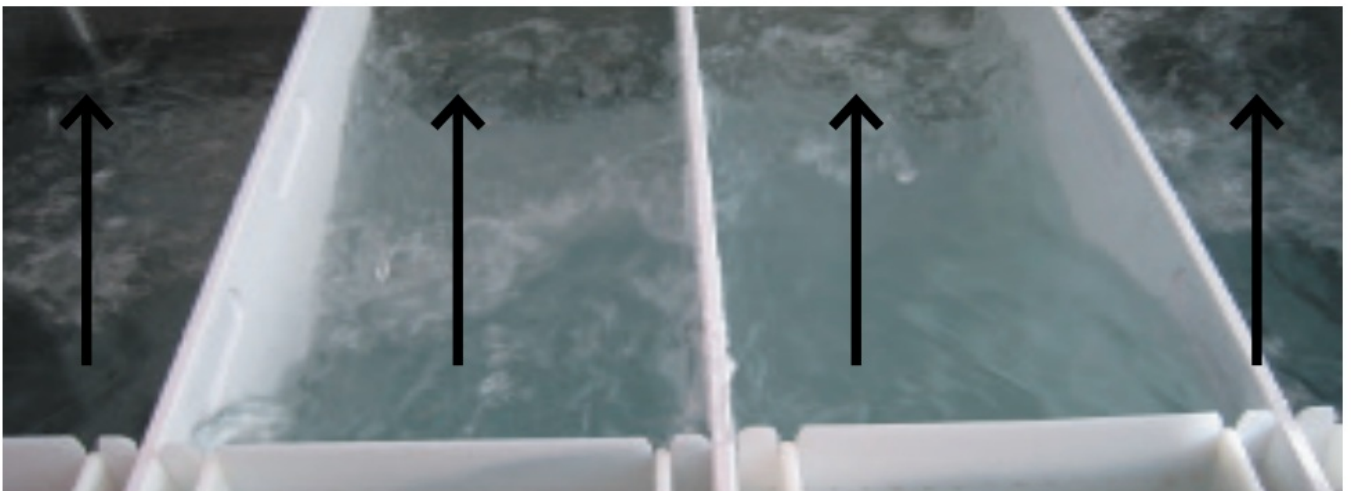


DO NOT PLACE KNIVES OR OTHER SHARP OBJECTS IN THE POWER PREP INTRO. ALLOWING KNIVES OR OTHER SHARP OBJECTS TO TUMBLE FREELY



THE POWER PREP INTRO TANK MAY CAUSE DAMAGE TO THE EQUIPMENT AND BODILY INJURY TO THE USER.

When the pump is running, the water will become turbulent, and a strong front-to-back current will be established.



Begin placing produce in the Power Prep Intro. Since there are multiple compartments, you may place a different type of produce in each one.



After the necessary time for soil removal and disinfection, the product may be removed by inserting a collection basket. Holding the basket as shown, angle the basket so its leading edge is aligned with the flow in the sink. As you swing the basket into position, production will begin flowing into the basket.



Rest the basket on the top edges of the partitions or the sink edges until all the produce is collected. Lift the full basket out when ready. Always observe safe lifting procedures.



WASHING TIPS

Conserve water and washing chemicals by planning your produce washing. For example:

- Wash more durable items like oranges and apples first, because those items are less likely to foul the water.
- Wash less durable items like lettuce and greens later because of their tendency to release small green bits into the water.
- Wash heavily soiled items like potatoes and radishes last because of their tendency to cloud the water.

Consider the effect of flavor mixing and color mixing with certain combinations of produce. For example, it might be better to wash cauliflower before washing blueberries. Were the blueberries to be washed first, a very small number of bruised blueberries could “dye” the water. Also, blueberry seeds might be released which are dark in color. The surfaces of the cauliflower pieces may absorb the blueberry flavor and color, and the dark seeds could easily get caught in the cauliflower florets.

A little planning will reduce the number of washing solution changes to save time and money.

EMPTYING THE POWER PREP INTRO

When all produce washing is finished and all product has been removed, collect the larger waste particles suspended in the wash water.

This can be done by placing a filter screen in a basket and then placing the basket in each of the wash sections.



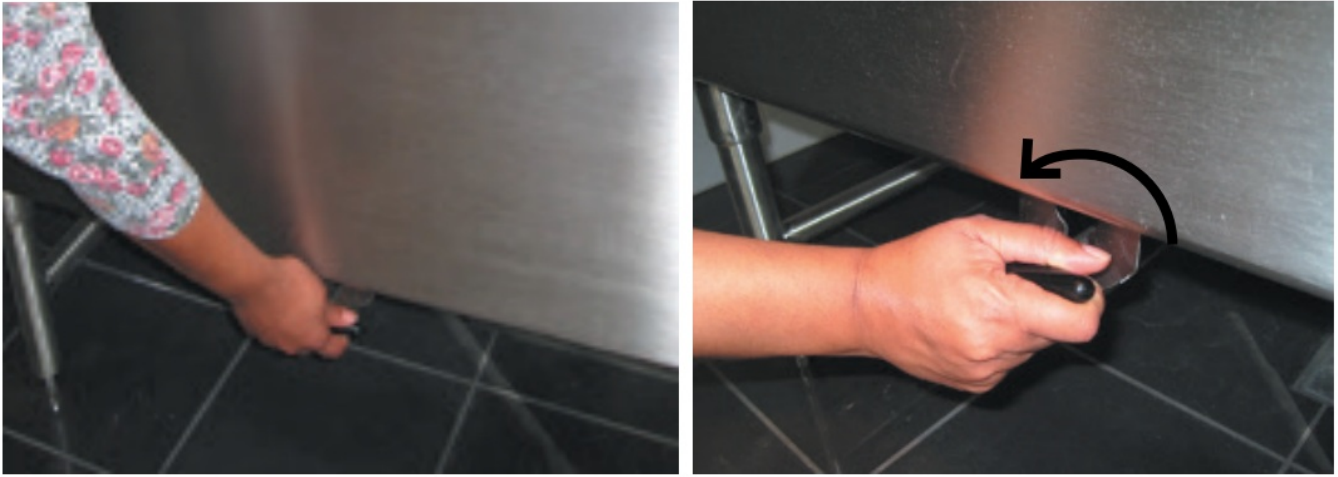
Allow a few minutes of collection time in each position. When finished, empty the contents of the filter into a suitable waste container, and wash out the filter and basket.

When you have completed the particle collection, turn off the pump by turning the switch to the OFF position.



DO NOT RUN THE MOTOR WITHOUT WATER IN THE SINK. DOING SO COULD DAMAGE THE SEALS IN THE PUMP.

Open the drain valve by turning it counterclockwise 1/4 turn.



Remove each Power Prep Intro component (flow guides, partitions, and rib sets) in the reverse order they were assembled. Wash each component to remove all traces of produced debris. Position each component so that it dries quickly. Pay particular attention to the flow guides; provide airflow between each of them and do not stack them together wet.

INSTALLATION



THE INSTALLATION AND INITIAL OPERATIONAL CHECK OF YOUR NEW SYSTEM MUST BE PERFORMED ONLY BY LICENSED AND CERTIFIED PLUMBERS AND ELECTRICIANS.



BE SURE TO FOLLOW ALL APPLICABLE NATIONAL AND LOCAL ELECTRICAL CODES WHEN INSTALLING THE ELECTRICAL SUPPLY AND/OR A NEW CIRCUIT BREAKER. DO NOT CONNECT THE SYSTEM USING A POWER CORD AND PLUG OR AN EXTENSION CORD OF ANY KIND.

Please refer to the detailed installation instructions that were sent with your Power Prep Intro system.

ELECTRICAL REQUIREMENTS

The electrical requirements of your new system are on the serial number plate located on the end of the wash sink near the front, adjacent to the control panel enclosure. They are also shown inside the control panel enclosure itself. The installer must provide overcurrent protection conforming to the local codes. All Power Prep Intro systems have a single-point electrical connection, and a dedicated circuit is required. The system is completely pre-wired and tested at the factory, and a hard-wired connection from an appropriate power source is all that is required.

The installer is to provide a NEMA 3X disconnect that should be incorporated in the fixed wiring.

Properly sized watertight conduit, fittings, and parts are required, as well as the appropriate gauge wire.

If your system is a "left-to-right" unit, you should locate the disconnect at the left end of the system. (The opposite would be true for a "right-to-left" system.) Ideally, the disconnect should be located on the wall directly behind the pump motor and control panel provided this location is easily accessible by the operator and does not interfere with the faucet.

A wiring diagram is located in the system's control panel enclosure. Specific part numbers and parts information can be obtained from the factory.

PLUMBING REQUIREMENTS

Your unit requires the following plumbing connections:

- 3/4" (19mm) or 1/2" (12 mm) hot and cold water supply lines.
- One wastewater connection (minimum 1 1/2" / 38mm).

PREVENTATIVE MAINTENANCE

Your system requires minimal, routine preventive maintenance. As such, the following should be done on a routine basis to ensure that your system remains reliable. If there are any questions regarding the preventative maintenance procedures, please contact the factory at 888-994-7636.



IMPORTANT: TURN OFF THE POWER TO THE UNIT AT THE MAIN BREAKER PRIOR TO PERFORMING THE FOLLOWING TASK!

About once per month, clean the pump motor fan shroud with a damp, soapy rag. The motor shroud is the “vented” cover located at the end of the motor (closest to the control panel). This will prevent grease and dust from accumulating in the cover’s openings, which can obstruct the airflow that cools the motor.

About once per month, de-lime the wash sink. Simply add a de-liming agent to a sink of warm, fresh water and run the system overnight. Ask your chemical sales representative to recommend a specific de-liming agent.

You need not be concerned about greasing the motor bearings, as they are permanently sealed.

There are no other preventive maintenance procedures that you will need to perform on your Power Prep Intro system.

TROUBLESHOOTING

ONLY A LIMITED NUMBER OF TROUBLESHOOTING AND REPAIR PROCEDURES MAY BE PERFORMED BY THE FACILITY OWNER OR MANAGER. ANY TROUBLESHOOTING OR REPAIR THAT REQUIRES THE REMOVAL OF FASTENERS OR THAT ENTAILS ELECTRICAL SERVICE MUST NOT BE ATTEMPTED BY ANYONE OTHER THAN AN AUTHORIZED SERVICE AGENCY. TO OBTAIN THE NAME OF A RECOMMENDED SERVICE AGENT IN YOUR AREA, PLEASE CALL THE UNIFIED BRANDS SERVICE DEPARTMENT AT 888-994-7636.

SYMPTOM	POSSIBLE CAUSE	REMEDY
Pump motor volt not running	The circuit breaker accidentally turned off	Turn breaker on
	Circuit breaker tripped	Investigate the reason for tripping. e.g. damaged Wiring. undersized breaker. CONTACT UNIFIED BRANDS SERVICE OR AN AUTHORIZED SERVICE AGENCY.
	Wail mounted disconnect is turned off	Turn disconnect on
	Motor thermal overload tripped	Investigate the reason for overload tripping. e.g. debris stuck in pump impeller. If debris removal requires that you remove any fasteners. YOU MUST CONTACT UNIFIED BRANDS SERVICE OR AN AUTHORIZED SERVICE AGENCY. Once rectified. reset thermal overload by pressing the button on the bottom of the motor junction box.
	Start capacitor defective (single phase motors)	Replace capacitor. To do this. YOU MUST CONTACT UNIFIED BRANDS SERVICE OR AN AUTHORIZED SERVICE AGENCY.
Pump motor runs. but the water flow is inadequate	The motor is running on the wrong voltage	Confirm that the house wiring supply is appropriate for the motor nameplate data. Reconnect motor internal leads according to the motor nameplate instructions. YOU MUST CONTACT UNIFIED BRANDS SERVICE OR AN AUTHORIZED SERVICE AGENCY to make these changes.

	The motor is running in the wrong direction	For three-phase motors. reverse any two motor leads For single-phase motors, reconnect motor internal leads according to the motor nameplate instructions. YOU MUST CONTACT UNIFIED BRANDS SERVICE OR AN AUTHORIZED SERVICE AGENCY to safely change the rotation.
It makes a loud, steady noise when running	Debris caught in the motor's cooling fan	Lock and tag out the electrical power from the unit, and remove the motor fan cover. and remove the debris. Replace the fan cover and restore the power. For this task, YOU MUST CONTACT UNIFIED BRANDS SERVICE OR AN AUTHORIZED SERVICE AGENCY.
	Motor seal running dry	Lock and tag out the electrical power from the unit. remove the motor fan cover. and squirt some low viscosity oil such as WD40 between the fan and the motor end bell. Replace the fan cover and restore the power. YOU MUST CONTACT UNIFIED BRANDS SERVICE OR AN AUTHORIZED SERVICE AGENCY for service of this nature.
	Debris caught in the pump impeller	Lock and tag out the electrical power from the unit. Remove the three 3/16-16 adapter plate retaining screws adjacent to the motor. Slide the motor, adapter plate, and impeller out of the pump housing. Remove debris from the impeller and reassemble. YOU MUST CONTACT UNIFIED BRANDS SERVICE OR AN AUTHORIZED SERVICE AGENCY for this service.

WARRANTY

Congratulations on the purchase of your new Unified Brands equipment. We hope you enjoy many years of reliable service in connection with the same. Please review all of the important safety and operational information contained in the Operator's Manual for this equipment before it is placed in service. If you have any questions related to equipment set up, operations, or service, please call 888-994-7636.

In addition, please review the terms and conditions of the sale set forth below.

*****IMPORTANT NOTICE*****

WARRANTIES, LIMITATIONS ON WARRANTIES, AND LIMITATIONS OF REMEDIES

The following Warranties, Limitation on Warranties, and Limitation of Remedies are included in the terms of sale for this product. Please read this entire warranty and all warranty modifications, disclaimers, and limitations of remedies set forth herein before accepting or using this equipment or product. The customer acknowledges and accepts the provisions of this notice by the Customer's acceptance and use of the product. If these provisions are not acceptable and agreed to by the Customer, then please return this product in its unused condition to Unified Brands or a Unified Brands authorized dealer.

UNIFIED BRANDS warrants this product against defects in material and workmanship under normal use and services for which this product was designed. This warranty runs only to the original end-user and is in lieu of any other liability for defects. THE WARRANTIES EXPRESSED IN THESE TERMS AND CONDITIONS ARE IN PLACE OF ANY AND ALL OTHER EXPRESS WARRANTIES (UNLESS SEPARATELY STATED IN PRINTED MATERIAL PREPARED BY US DESCRIBING OUR EQUIPMENT) AND EXCLUDE ALL IMPLIED WARRANTIES, INCLUDING, BUT NOT LIMITED TO, ANY WARRANTY OF MERCHANTABILITY OR FITNESS FOR ANY PARTICULAR PURPOSE; NOR ARE THERE ANY OTHER WARRANTIES, EXPRESS OR IMPLIED, BY OPERATION OF LAW OR OTHERWISE. In no event shall UNIFIED BRANDS be liable for damages or delay or for any consequential, special or contingent damages arising out of any breach of our warranty, whether or not we have knowledge of specific needs or our employees or agents have given any specific assurances. Anyone claiming that there has been a breach of warranty by UNIFIED BRANDS must give us written notice within

THIRTY (30) days after discovery of the relevant defect or the right to assert such claim will have been waived conclusively and provided further that any such claim must also be asserted within the general warranty period for such equipment and/or parts.

UNIFIED BRANDS will not be liable for any expense incurred without our prior written authorization for alterations made outside of our factory or for repairs that are not performed by UNIFIED BRANDS authorized service departments using UNIFIED BRANDS factory parts. Nor shall we be responsible for the performance of equipment as to which any repairs, revisions, or alterations have been made by others.

THE EXCLUSIVE REMEDY OF THE USER OR BUYER AND THE EXCLUSIVE LIABILITY OF UNIFIED BRANDS OR ANY SELLER OF UNIFIED BRANDS PRODUCTS, FOR ANY AND ALL CLAIMS, LOSSES, INJURIES, OR DAMAGES (INCLUDING CLAIMS BASED ON BREACH OF WARRANTY, CONTRACT, NEGLIGENCE, TORT, STRICT LIABILITY, OR OTHERWISE) RESULTING FROM OR ARISING OUT OF THE USE OF HANDLING OF THIS PRODUCT, SHALL BE THE RETURN OF THE PURCHASE PRICE OR AN AMOUNT NOT TO EXCEED THE ORIGINAL PURCHASE PRICE OF THE PRODUCT OR, AT THE ELECTION OF UNIFIED BRANDS OR THE SELLER, THE REPLACEMENT OF THE PRODUCT.



<https://unifiedbrands.net/Power-Soak-Warranty-Information>

Documents / Resources

	<p>power soak 34201 Power Prep Intro [pdf] Instruction Manual 34201, Power Prep Intro, 34201 Power Prep Intro</p>
	<p>power soak 34201 Power Prep Intro [pdf] Instruction Manual 34201 Power Prep Intro, 34201, Power Prep Intro, Prep Intro, Intro</p>

References

- [Unified Brands » Re-imagining Food Preparation](#)
- [Unified Brands » Re-imagining Food Preparation](#)

