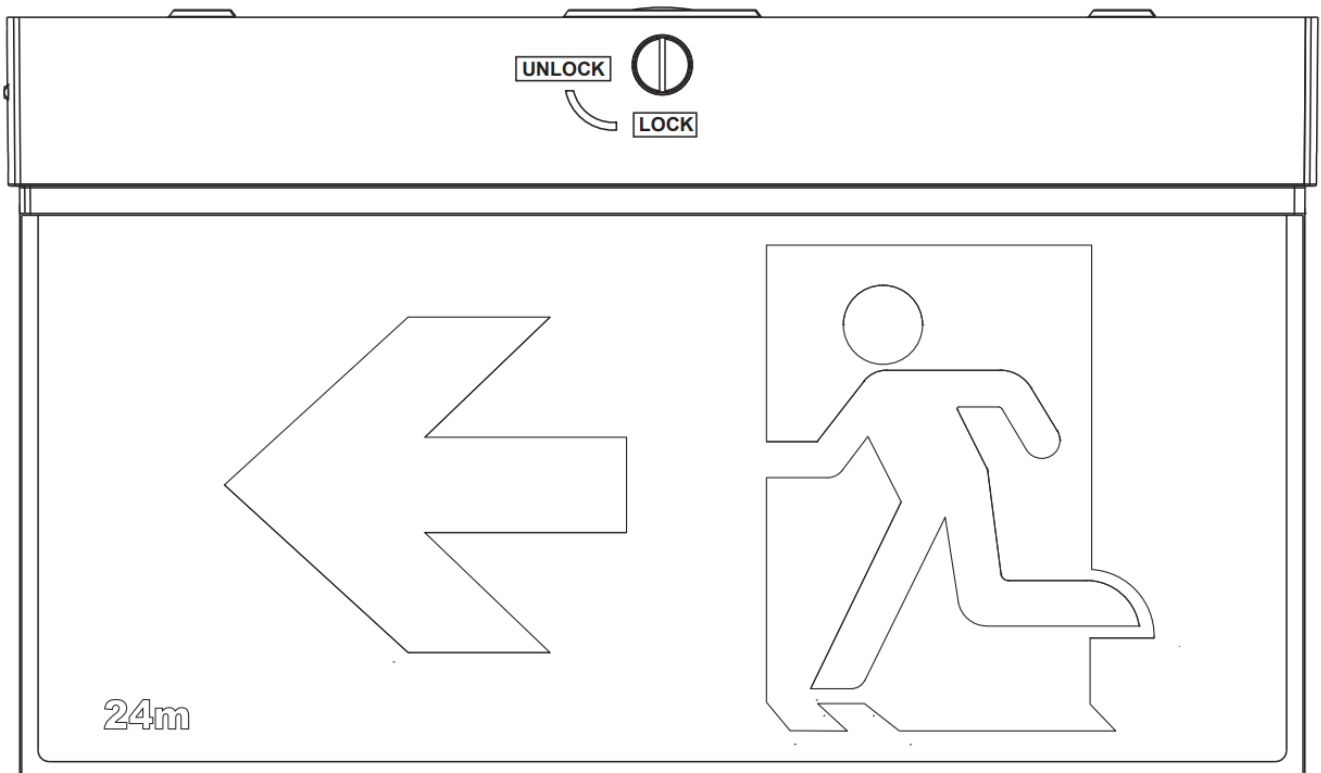




POWER-LITE EXITBOX-R-B LED Exit Sign Instruction Manual

[Home](#) » [POWER-LITE](#) » POWER-LITE EXITBOX-R-B LED Exit Sign Instruction Manual 

POWER-LITE EXITBOX-R-B LED Exit Sign

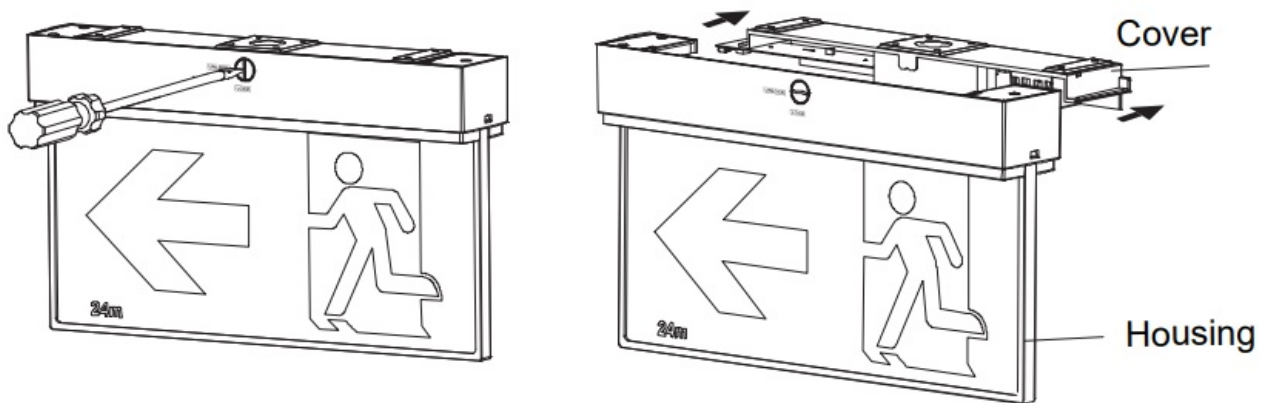


Contents

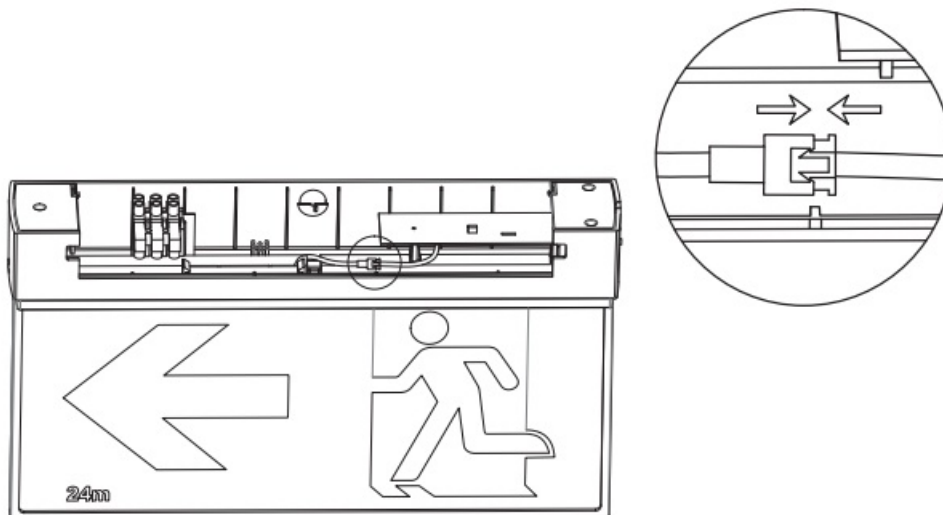
- 1 Wall Mount
- 2 Recessed Mount (EXITBOX -RK-B Sold Separately)
- 3 Instructions for automatic test option
- 4 Precautions
- 5 Installation Procedure
- 6 Ceiling Mount
- 7 Customer Support
- 8 Documents / Resources
 - 8.1 References
- 9 Related Posts

Wall Mount

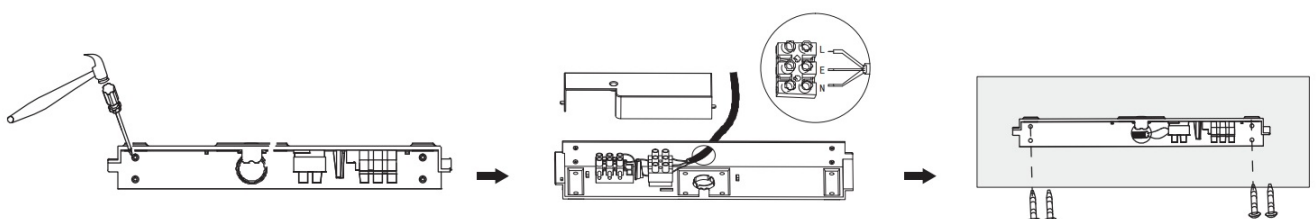
1. Release the clip to UNLOCK status by a screwdriver. Slide the cover away from the housing.



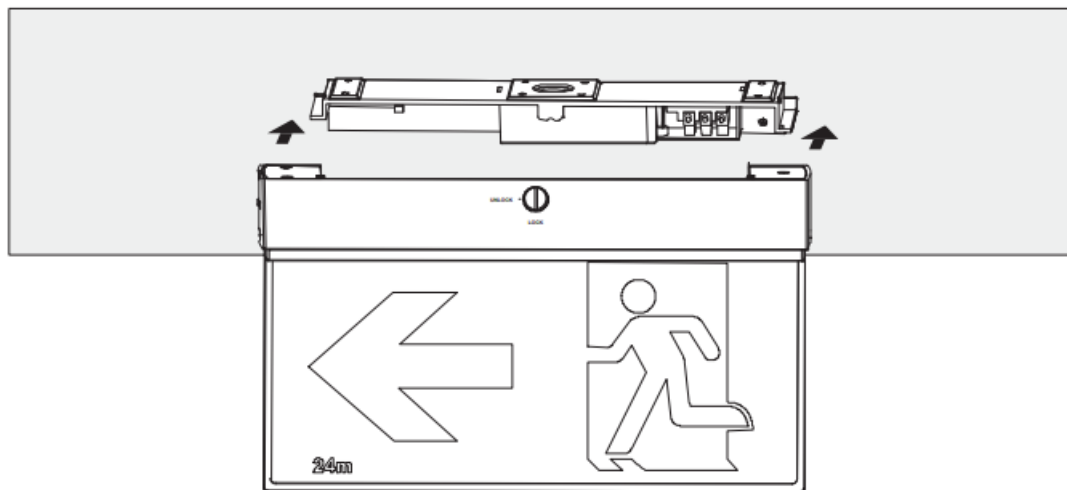
2. Connect the battery with quick connector.



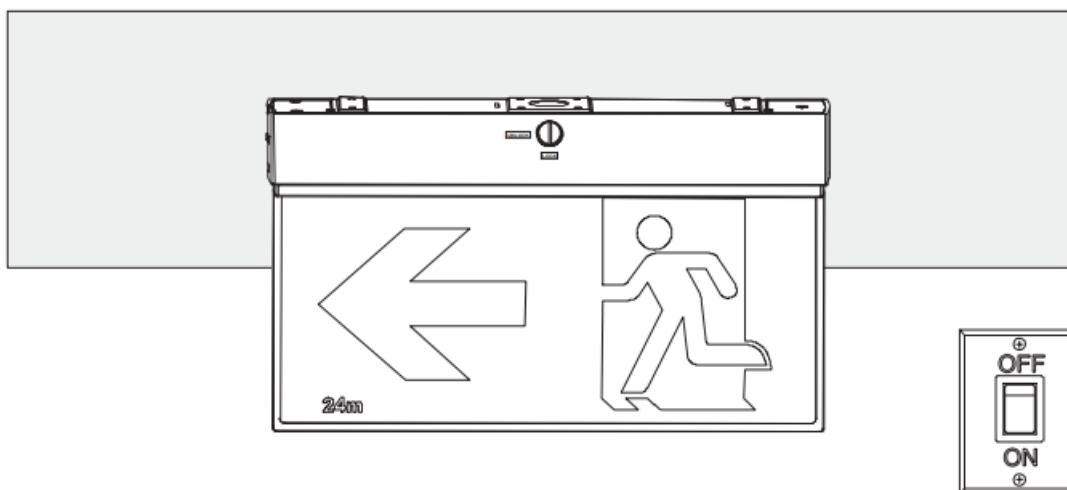
3. Knock out the holes for screwing and AC wiring. Connect wiring to terminals. Mount the cover onto the wall.



4. Slide the housing into the cover.

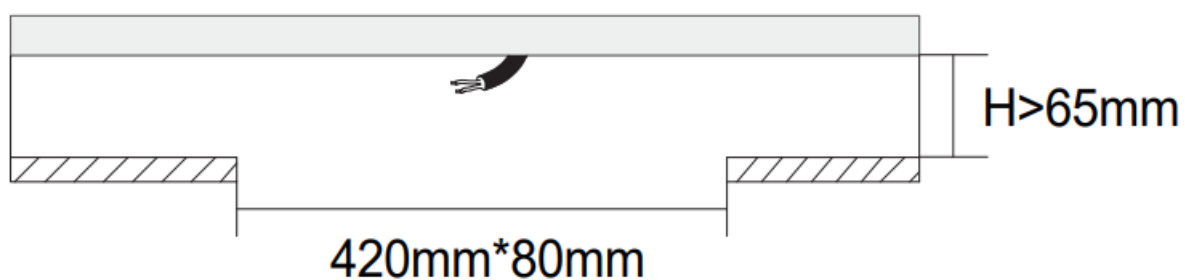


5. Fasten the clip to LOCK status. Switch on.

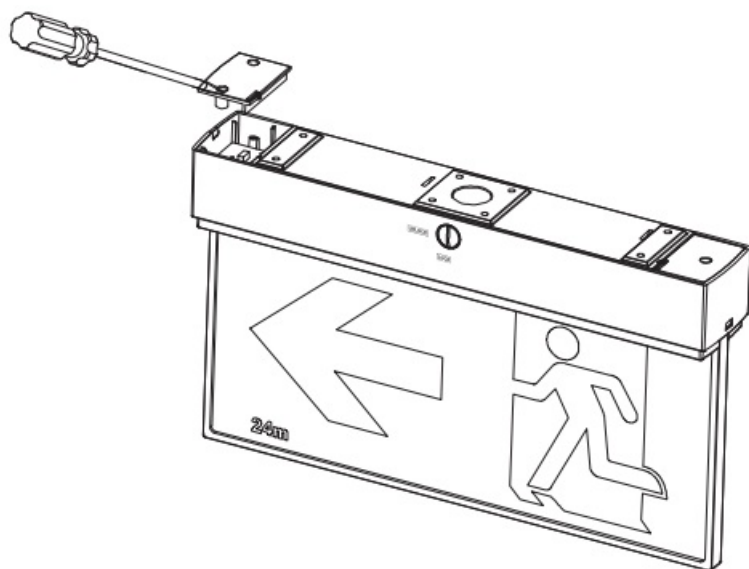


Recessed Mount (EXITBOX -RK-B Sold Separately)

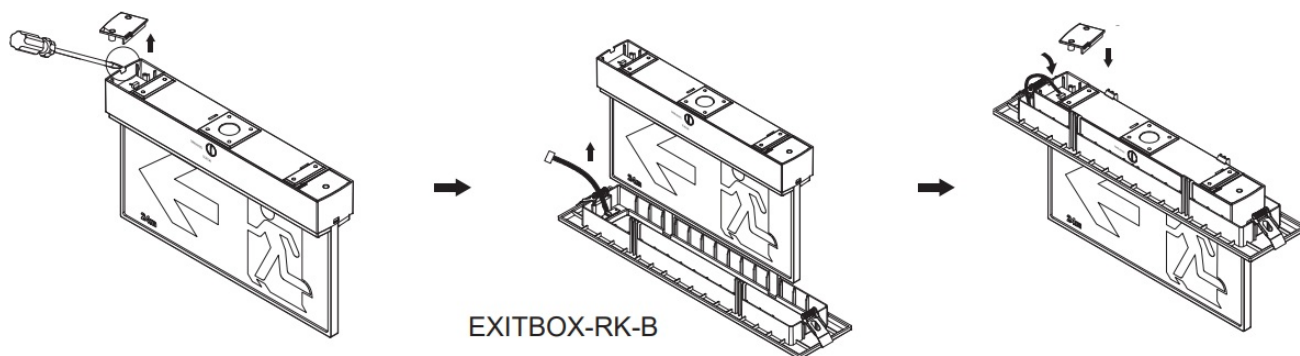
1. Cut out size: L420mm x W80mm.



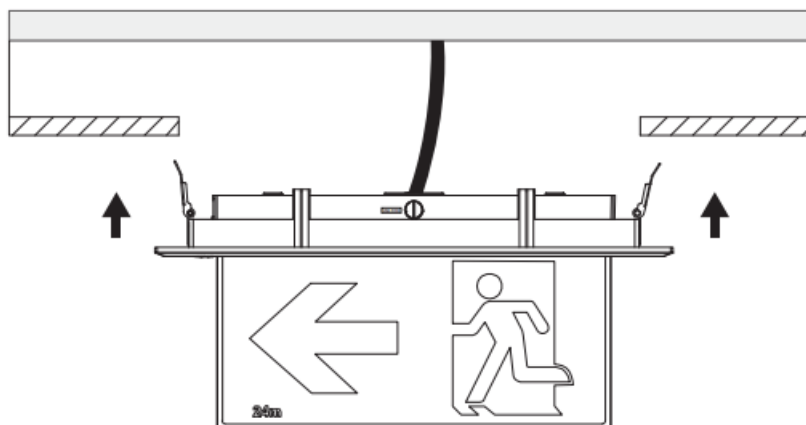
2. Unscrew the side cover from fixture.



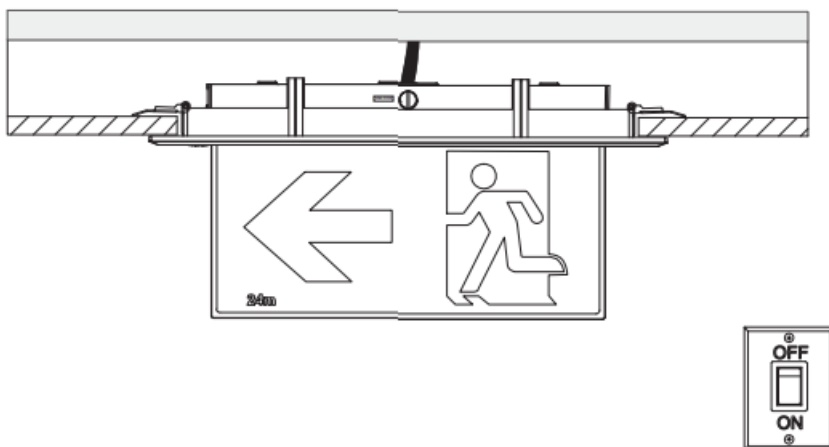
3. Knock out the side hole, put the panel through the recessed kit, and the recessed kit will be fixed onto the fixture. Plug the recessed kit's indicator and test button PCBA into the main PCBA. Screw the side cover back.



4. Press the springs upwards into the ceiling.



5. Finish installation. Switch on.



Instructions for automatic test option

Instruction for Automatic test function

Once the unit is powered up, a self-diagnostics test will be automatically initiated:

- Check battery, lamp, charge board and transfer fault all the time.
- Run 2H duration test every half a year.

Note: All test functions are preset and no need field adjustment.

Dual Colour LED Status Indicator Meaning

- **Green indicator solid on:** Ready/ Normal Operation
- **Red indicator flashes:** Require service

•	One flash, 4s pause	Battery disconnected
••	Two flashes, 4s pause	Low battery voltage
•••	Three flashes, 4s pause	Charge board fault
••••	Four flashes, 4s pause	AC/DC transfer fault
•••••	Five flashes, 4s pause	LED lamp fault

Note: When the fault is recovered, press the test button for 2s, the red flashing indicator will turn green. The fault is cleared, and the unit is back to normal.

Button Test

Press test button once	run a 30s duration test
Press test button twice within 2s	run a 3mins duration test
Press test button 3 times within 2s	run a 30mins duration test
Press test button 4 times within 2s	run a 2H duration test

Precautions

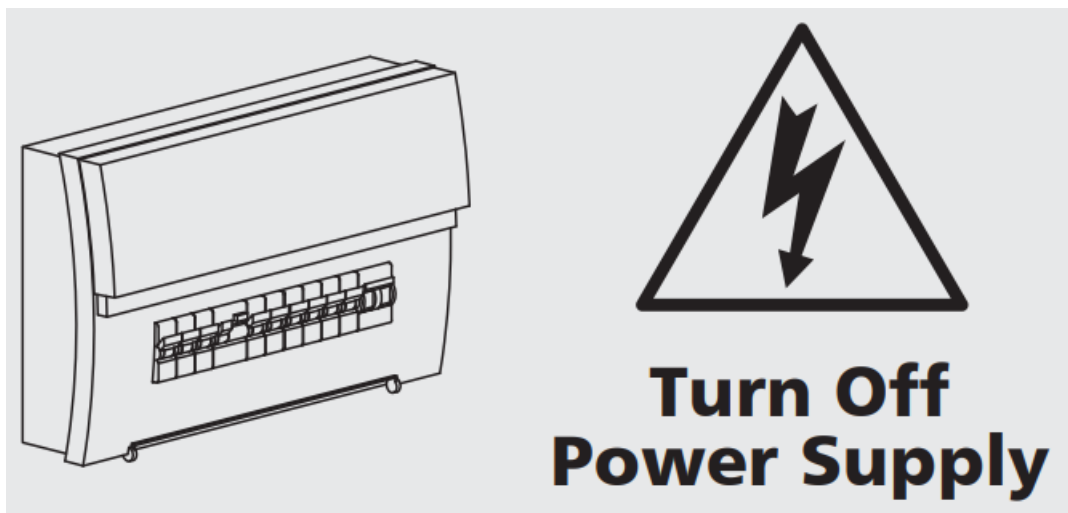
Normal Operation: The green LED indicator stays on when connected to mains supply. The indicator will turn off when the mains supply fails, or when the internal charger malfunctions, or when the luminaire is in test mode.

Battery: LiFePO4 rechargeable battery pack. Battery should be replaced when it reaches the end of its lifetime. To avoid damage to the luminaire and ensure its performance, the battery should be replaced with same type.

Test Switch: Press the test button, LED indicator will turn off and the luminaire will be powered by the battery pack. The light source is non-replaceable. When the light source reaches the end of its lifetime, the whole luminaire shall be replaced.

Installation Procedure

WARNING 

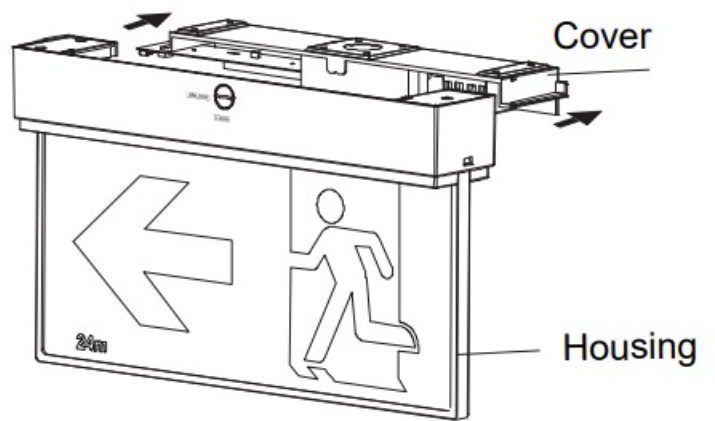
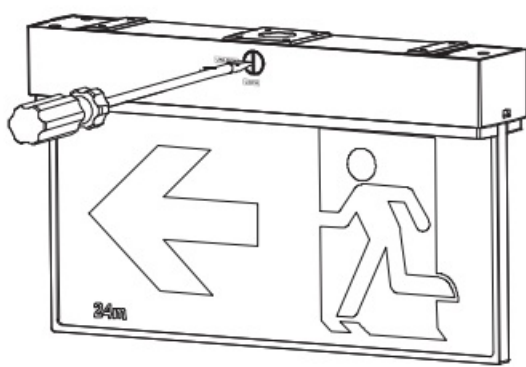


1. Switch off before installation or maintenance.
2. Switch on only after complete installation and examination of the circuit.
3. Professional electrician for installation and maintenance only.
4. This luminaire is not intended for use in high-risk task area lighting.

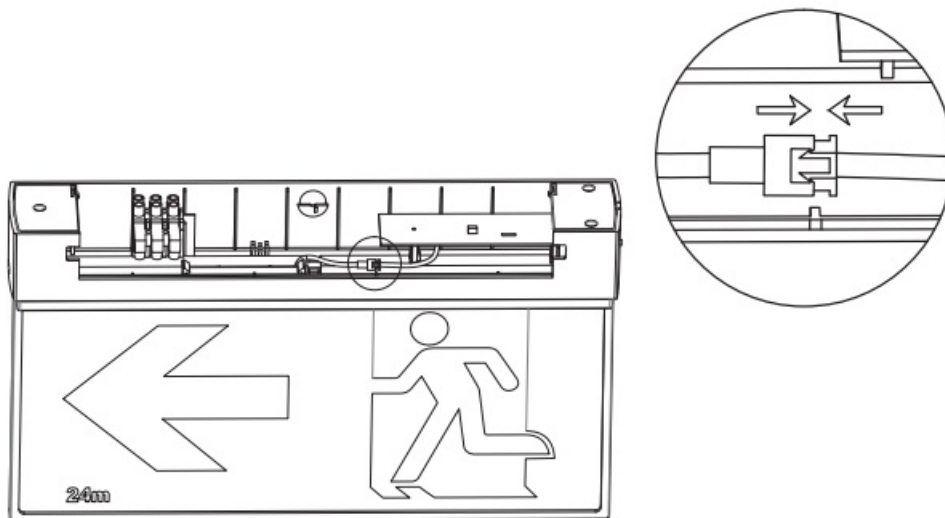
Read instructions and check you have all the tools and accessories to complete the installation correctly.\

Ceiling Mount

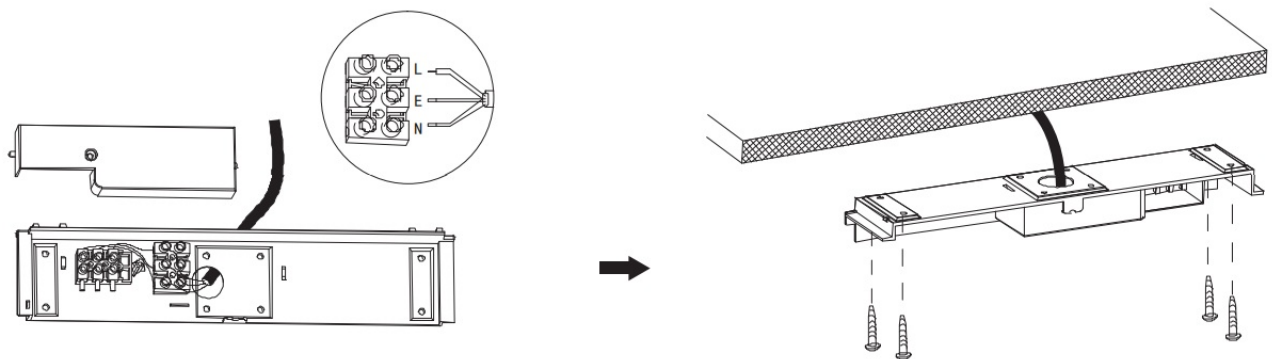
1. Release the clip to UNLOCK status by a screwdriver. Slide the cover away from the housing.



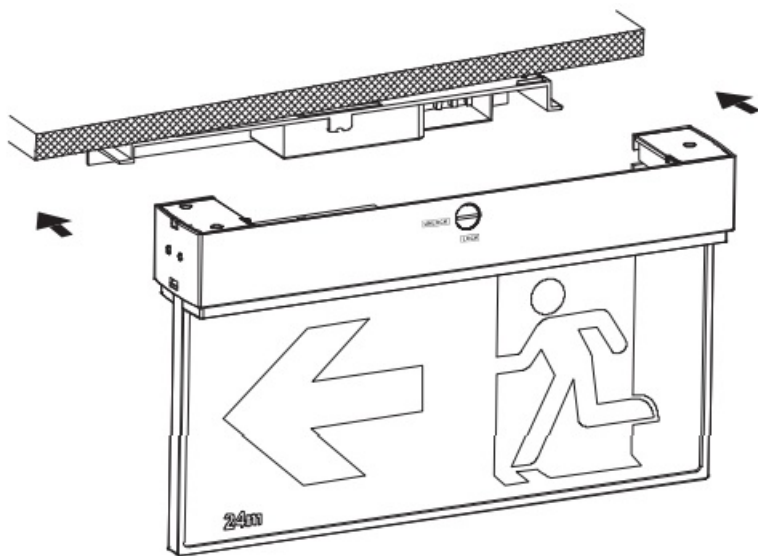
2. Connect the battery with quick connector.



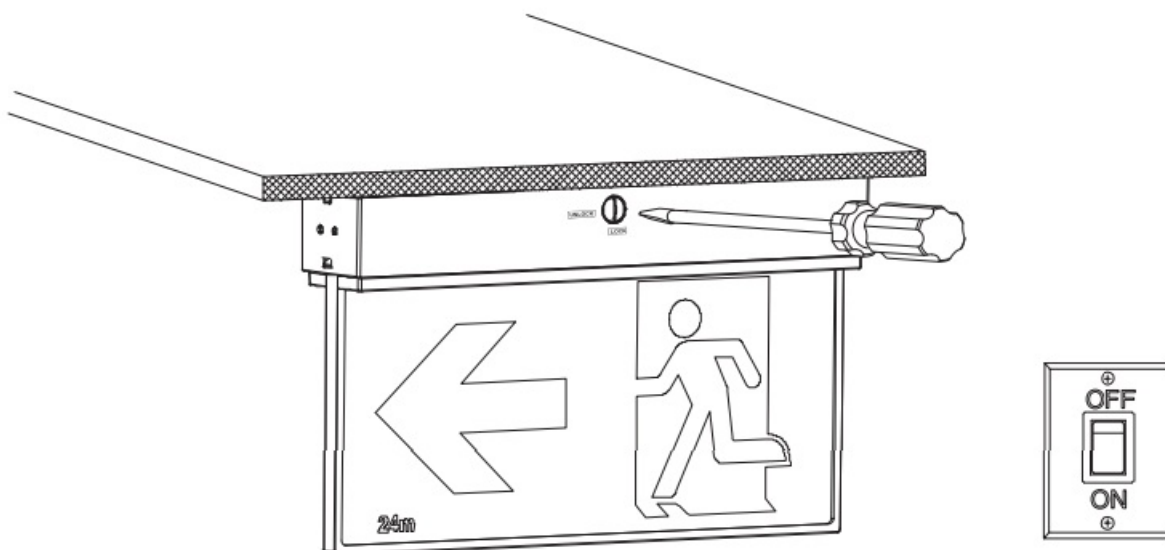
3. Connect wiring to terminals. Mount the cover onto the ceiling



4. Slide the housing into the cover.



5. Fasten the clip to LOCK status. Switch on.



Customer Support



IP20



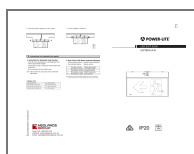
Free Call: 1800 909 306

Website: nedlandsgroup.com.au

Email: sales@nedlandsgroup.com.au



Documents / Resources



POWER-LITE EXITBOX-R-B LED Exit Sign [pdf] Instruction Manual
EXITBOX-R-B-1W-24m, EXITBOX-R-B LED Exit Sign, EXITBOX-R-B, EXITBOX-R-B Exit Sign,
LED Exit Sign, Exit Sign, LED Sign, Sign

References

-  [LED Lighting Manufacturer - Perth and Melbourne - Nedlands Group](#)

Manuals+.