

Power Dynamics
Professional Audio
Series
ive
ker



Contents

- [1 Power Dynamics PDW Series Passive Speaker](#)
- [2 TECHNICAL SPECIFICATION](#)
- [3 Product Usage Instructions](#)
- [4 UNPACKING INSTRUCTION](#)
- [5 OVERVIEW](#)
- [6 FAQ](#)
- [7 Documents / Resources](#)
 - [7.1 References](#)



Power Dynamics PDW Series Passive Speaker



TECHNICAL SPECIFICATION

	PDW5B	PDW5W	PDW6B	PDW6W
Ref.nr.:	178.601	178.602	178.604	178.605
Speaker type	Passive (non-amplified)			
Output power: Max	200W		300W	
Output power: RMS	100W		150W	
Tweeter type	Dome			
Diameter tweeter	2.75”			
Diameter woofer	5.25”		6.5”	
Magnet type	Ferrite			
SPL @ 1W/1m	90dB		92dB	
IP rating	IP20			
Frequency response	50Hz-18KHz			
Crossover frequency	2.7KHz			
Dispersion	80° x 60°			
Impedance	8 Ohm			
Input connections	NL-4, Screw terminal			
Output connections	Screw terminal			
Dimensions (L x W x H)	165 x 200 x 265mm		185 x 242 x 295mm	
Weight	3.55kg		4.85kg	

The specifications are typical. The actual values can slightly change from one unit to the other. Specifications can be changed without prior notice.

Product Usage Instructions

Important Safety Instructions:

Before using the unit, please read the manual thoroughly to understand all features and safety precautions:

- Consult a specialist before initial use.
- Expect a slight smell when first switching on the unit, which is normal.
- Avoid opening the housing as it contains voltage carrying parts.
- Avoid placing metal objects or liquids inside the unit.
- Avoid placing the unit near heat sources, on vibrating surfaces, or covering ventilation holes.
- Avoid continuous use of the unit.
- Handle the mains lead carefully to prevent damage.
- Avoid repeatedly switching the unit on and off to prolong its lifespan.
- Keep the unit out of reach of children and do not leave it unattended.
- Avoid using cleaning sprays on switches.
- Avoid forcing controls.

Important Notes:

This product contains high voltages inside the housing. Please adhere to all safety instructions and read the manual carefully.

CE Certification:

The unit has been certified CE. Any alterations to the unit will invalidate the CE certificate and warranty.



Disposal Instructions:

Do not dispose of electric products in household waste. Bring them to a recycling center. Contact local authorities or dealers for disposal guidance.

Congratulations to the purchase of this Power Dynamics product. Please read this manual thoroughly prior to using the unit in order to benefit fully from all features.

Read the manual prior to using the unit. Follow the instructions in order not to invalidate the warranty. Take all precautions to avoid fire and/or electrical shock. Repairs must only be carried out by a qualified technician in order to avoid electrical shock. Keep the manual for future reference.

- Prior to using the unit, please ask advice from a specialist. When the unit is switched on for the first time, some smell may occur. This is normal and will disappear after a while.
- The unit contains voltage carrying parts. Therefore do NOT open the housing.
- Do not place metal objects or pour liquids into the unit. This may cause electrical shock and malfunction.
- Do not place the unit near heat sources such as radiators, etc. Do not place the unit on a vibrating surface. Do not cover the ventilation holes.
- The unit is not suitable for continuous use.
- Be careful with the mains lead and do not damage it. A faulty or damaged mains lead can cause electrical shock and malfunction.
- When unplugging the unit from a mains outlet, always pull the plug, never the lead.
- Do not plug or unplug the unit with wet hands.
- If the plug and/or the mains lead are damaged, they need to be replaced by a qualified technician.
- If the unit is damaged to such an extent that internal parts are visible, do NOT plug the unit into a mains outlet and DO NOT switch the unit on. Contact your dealer. Do NOT connect the unit to a rheostat or dimmer.
- To avoid fire and shock hazard, do not expose the unit to rain and moisture.
- All repairs should be carried out by a qualified technician only.
- Connect the unit to an earthed mains outlet (220-240Vac/50Hz) protected by a 10-16A fuse.
- During a thunderstorm or if the unit will not be used for a longer period of time, unplug it from the mains. The rule is: Unplug it from the mains when not in use.
- If the unit has not been used for a longer period of time, condensation may occur. Let the unit reach room temperature before you switch it on. Never use the unit in humid rooms or outdoors.
- To prevent accidents in companies, you must follow the applicable guide lines and follow the instructions.
- Do not repeatedly switch the fixture on and off. This shortens the life time.
- Keep the unit out of the reach of children. Do not leave the unit unattended.
- Do not use cleaning sprays to clean switches. The residues of these sprays cause deposits of dust and grease. In case of malfunction, always seek advice from a specialist.
- Do not force the controls.
- This unit is with speaker inside which can cause magnetic field. Keep this unit at least 60cm away from computer or TV.

- This unit is with built-in lead-acid rechargeable battery. Please recharge the battery every 3 months if you are not going to use the unit for a long period of time. Or the battery may be damaged.
- If the battery is damaged please replace with same specifications battery. And dispose the damaged battery environment friendly.
- If the unit has fallen, always have it checked by a qualified technician before you switch the unit on again.
- Do not use chemicals to clean the unit. They damage the varnish. Only clean the unit with a dry cloth.
- Keep away from electronic equipment that may cause interference.
- Only use original spares for repairs, otherwise serious damage and/or dangerous radiation may occur.
- Switch the unit off prior to unplugging it from the mains and/or other equipment. Unplug all leads and cables prior to moving the unit.
- Make sure that the mains lead cannot be damaged when people walk on it. Check the mains lead before every use for damages and faults!
- The mains voltage is 220-240Vac/50Hz. Check if power outlet match. If you travel, make sure that the mains voltage of the country is suitable for this unit.
- Keep the original packing material so that you can transport the unit in safe conditions.
-  This mark attracts the attention of the user to high voltages that are present inside the housing and that are of sufficient magnitude to cause a shock hazard.
-  This mark attracts the attention of the user to important instructions that are contained in the manual and that he should read and adhere to.

The unit has been certified CE. It is prohibited to make any changes to the unit. They would invalidate the CE certificate and their guarantee!

NOTE: To make sure that the unit will function normally, it must be used in rooms with a temperature between 5°C/41°F and 35°C/95°F.

Electric products must not be put into household waste. Please bring them to a recycling centre. Ask your local authorities or your dealer about the way to proceed. The specifications are typical. The actual values can slightly change from one unit to the other. Specifications can be changed without prior notice. Do not attempt to make any repairs yourself. This would invalid your warranty. Do not make any changes to the unit. This would also invalid your warranty. The warranty is not applicable in case of accidents or damages caused by inappropriate use or disrespect of the warnings contained in this manual. Power Dynamics cannot be held responsible for personal injuries caused by a disrespect of the safety recommendations and warnings. This is also applicable to all damages in whatever form.

UNPACKING INSTRUCTION

CAUTION! Carefully unpack the box upon receipt. Check the contents to ensure that all parts are present and have been received in good condition. Notify the shipper immediately and retain packaging material if any parts appear damaged from shipping or the package itself shows signs of mishandling. Save the package and all packaging materials. If the product must be returned, it is important that the product is returned in the original factory box and packaging.

If the device has been exposed to drastic temperature fluctuation (e.g. after transportation), do not switch it on immediately. The arising condensation water might damage your device. Leave the device switched off until it has reached room temperature.

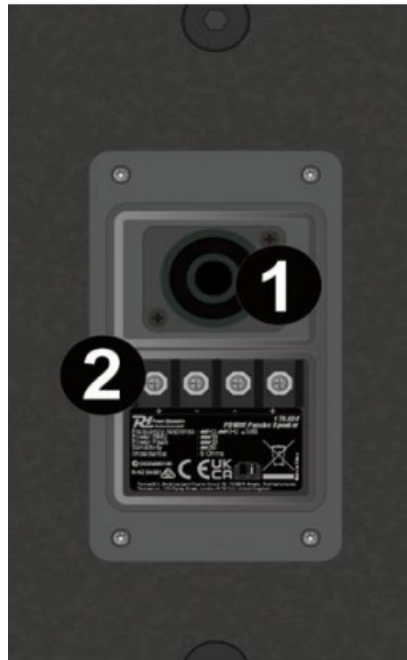
OVERVIEW

1. NL-4 CONNECTOR

Input for connecting to amplifier output with NL-4 cable.

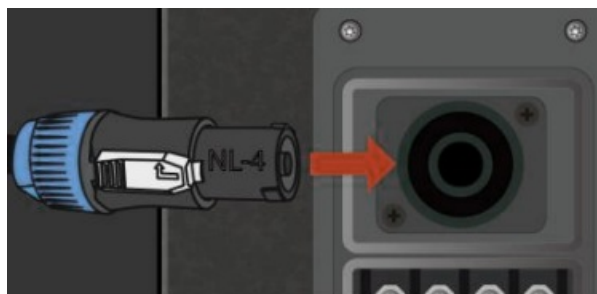
2. SCREW TERMINALS

Screw terminal input (from amplifier) and output (additional speaker looping) for connecting by using speaker wire.



NL-4 CONNECTION

This speaker allows for connection by NL-4 cable via the NL-4 input connector. Use a suitable NL-4 type cable of good quality to ensure function.



SCREW TERMINALS

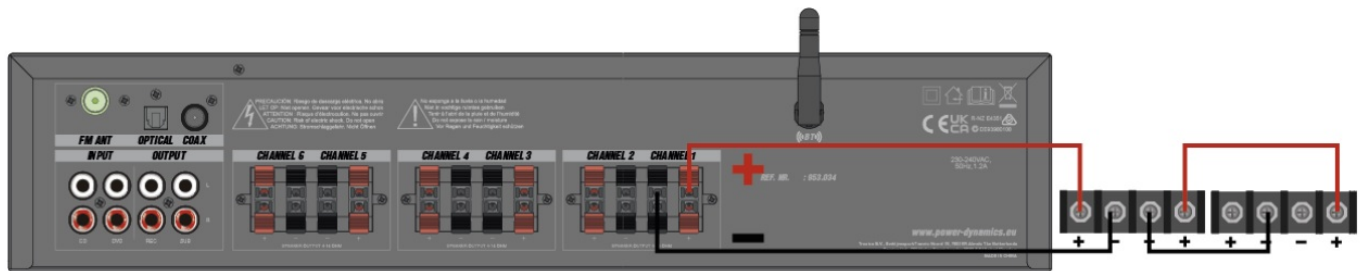
- For optimum performance, it's important to use cables specifically designed for speaker use. Do not use shielded “guitar” signal cables for connection to these speakers.
- Selection of the appropriate wire gauge is important for system operation. A cable that is too light will result in amplifier power being wasted due to the series resistance of the cable. In addition, loss of low-frequency performance may be experienced due to a degraded damping factor.

Looping speakers

- Running too many speakers from a single amplifier channel may result in damage to the amplifier and/or in degraded audio performance.
- **To calculate the combined impedance of multiple identical speakers in parallel, please use the formula below:**

Impedance of a single speaker/ Number of speakers connected in parallel = Amplifier impedance load

- Keep in mind that two 8 Ohm parallel-linked speakers will equal a 4-ohm load.
- Refer to your power amplifier's owner's manual, for information on the minimum recommended load impedance.



The products referred to in this manual conform to the European Community Directives to which they are subject:

- **European Union**

- Tronios B.V., Bedrijvenpark Twente Noord 18, 7602KR Almelo, The Netherlands
- 2014/35/EU
- 2014/30/EU
- 2011/65/EC

- **United Kingdom**

- Tronios Ltd., 130 Harley Street, London W1G 7JU, United Kingdom
- S.I. 2016:1101
- S.I. 2016:1091
- S.I. 2012:3032

Specifications and design are subject to change without prior notice. www.tronios.com

Copyright © 2024 by TRONIOS the Netherlands

FAQ

Q: What should I do if I notice a strange smell when first using the unit?

A: A slight smell may occur when the unit is switched on for the first time, which is normal and will dissipate after some time.


Q: Can I open the housing of the unit to perform repairs?

A: No, do not open the housing as it contains voltage carrying parts. Repairs should only be carried out by a qualified technician to avoid electrical shock.

Q: Can I use cleaning sprays on the switches of the unit?

A: No, avoid using cleaning sprays on switches as they can cause dust and grease deposits. Seek advice from a specialist in case of malfunction.

Documents / Resources

 <p>Power Dynamics Professional Audio</p> <p>PDW Series Passive Speaker</p> <p>GEDEELTAKMANUALIZING RECHEN PROHABEITING MANUAL DE INSTRUCCIONES MANUAL D'ISTRUCCIONES ISTRUKCIA DESLUS MANO A POSUT</p>	<p>Power Dynamics PDW Series Passive Speaker [pdf] Instruction Manual 178.601, 178.602, 178.604, 178.605, PDW Series Passive Speaker, PDW Series, Passive Speaker, Speaker</p>
--	---

References

- [🔗 Samen zijn we open. Samen staan we sterk. - Stichting OPEN](#)
- [🔗 Samen zijn we open. Samen staan we sterk. - Stichting OPEN](#)
- [🕒 Sound & Light distributor - Tronios.com](#)
- [🟢 Homepage Wecyle - Wecycle](#)
- [🟢 Homepage Wecyle - Wecycle](#)
- [User Manual](#)

[Manuals+.](#) [Privacy Policy](#) | [@manuals.plus](#) | [YouTube](#)

This website is an independent publication and is neither affiliated with nor endorsed by any of the trademark owners. The "Bluetooth®" word mark and logos are registered trademarks owned by Bluetooth SIG, Inc. The "Wi-Fi®" word mark and logos are registered trademarks owned by the Wi-Fi Alliance. Any use of these marks on this website does not imply any affiliation with or endorsement.