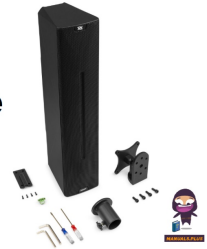




## **PDCS403A Active Column Speaker**



# **Power Dynamics PDCS403A Active Column Speaker Instruction Manual**

[Home](#) » [Power Dynamics](#) » Power Dynamics PDCS403A Active Column Speaker Instruction Manual 

### **Contents**

- [1 Power Dynamics PDCS403A Active Column Speaker](#)
- [2 Product Usage Instructions](#)
- [3 FAQ](#)
- [4 Introduction](#)
- [5 UNPACKING INSTRUCTION](#)
- [6 POWERSUPPLY](#)
- [7 REAR PANEL](#)
- [8 REPLACING THE FUSE](#)
- [9 TECHNICAL SPECIFICATION](#)
- [10 Documents / Resources](#)
  - [10.1 References](#)



**Power Dynamics PDCS403A Active Column Speaker**



## Product Usage Instructions

- Read the manual thoroughly before using the unit.
- Do not open the housing as it contains voltage-carrying parts.
- Avoid placing metal objects or liquids inside the unit to prevent electrical shock.
- Avoid placing the unit near heat sources, on vibrating surfaces, or covering ventilation holes.
- Do not use the unit continuously.
- Handle the mains lead carefully to avoid damage.
- Avoid repeatedly switching the fixture on and off.
- Keep the unit out of reach of children and do not leave it unattended.
- Avoid using cleaning sprays on switches and seek advice from a specialist in case of malfunction.
- Do not force the controls.

This unit should only be repaired by a qualified technician to avoid electrical shock. Making any changes to the unit will invalidate the CE certificate and warranty. Dispose of electric products properly at a recycling center.

## FAQ

- **Q:** What should I do if I notice a smell when switching on the unit for the first time?
- **A:** It is normal for a smell to occur initially; it will dissipate after some time. If the smell persists, contact a specialist.
- **Q:** Can I clean the switches with cleaning sprays?



- **A:** Avoid using cleaning sprays on switches as they can cause dust and grease deposits. Seek advice from a specialist in case of malfunction.
- **Q:** What happens if I open the housing of the unit?
- **A:** Opening the housing is dangerous as it contains voltage-carrying parts. Do not attempt to open it; seek professional help if needed.

## Introduction

Congratulations on the purchase of this Power Dynamics product. Please read this manual thoroughly before using the unit to benefit fully from all features.

Read the manual before using the unit. Follow the instructions in order not to invalidate the warranty. Take all precautions to avoid fire and/or electrical shock. Repairs must only be carried out by a qualified technician to avoid electrical shock. Keep the manual for future reference.

- Prior to using the unit, please ask for advice from a specialist. When the unit is switched on for the first time, some smell may occur. This is normal and will disappear after a while.
- The unit contains voltage-carrying parts. Therefore, do NOT open the housing.
- Do not place metal objects or pour liquids into the unit. This may cause electrical shock and malfunction.
- Do not place the unit near heat sources such as radiators, etc. Do not place the unit on a vibrating surface. Do not cover the ventilation holes.
- The unit is not suitable for continuous use.
- Be careful with the mains lead and do not damage it. A faulty or damaged mains lead can cause electrical shock and malfunction.
- When unplugging the unit from a mains outlet, always pull the plug, never the lead.
- Do not plug or unplug the unit with wet hands.
- If the plug and/or the mains lead are damaged, they need to be replaced by a qualified technician.
- If the unit is damaged to such an extent that internal parts are visible, do NOT plug the unit into a mains outlet, and DO NOT switch the unit on. Contact your dealer. Do NOT connect the unit to a rheostat or dimmer.
- To avoid fire and shock hazards, do not expose the unit to rain and moisture.
- All repairs should be carried out by a qualified technician only.
- Connect the unit to an earthed mains outlet (220-240Vac/50Hz) protected by a 10-16A fuse.
- During a thunderstorm or if the unit will not be used for a longer period of time, unplug it from the mains. The rule is to unplug it from the mains when not in use.
- If the unit has not been used for a longer period, condensation may occur. Let the unit reach room temperature before you switch it on. Never use the unit in humid rooms or outdoors.
- To prevent accidents in companies, you must follow the applicable guidelines and follow the instructions.
- Do not repeatedly switch the fixture on and off. This shortens the lifetime.
- Keep the unit out of the reach of children. Do not leave the unit unattended.
- Do not use cleaning sprays to clean switches. The residues of these sprays cause deposits of dust and grease. In case of malfunction, always seek advice from a specialist.
- Do not force the controls.
- This unit is with a speaker inside which can cause a magnetic field. Keep this unit at least 60cm away from the computer or TV.
- This unit has with built-in lead-acid rechargeable battery. Please recharge the battery every 3 months if you are not going to use the unit for a long period of time. Or the battery may be damaged.

- If the battery is damaged, please replace it with a battery of the same specifications. And dispose of the damaged battery environment-friendly.
- If the unit has fallen, always have it checked by a qualified technician before you switch the unit on again.
- Do not use chemicals to clean the unit. They damage the varnish. Only clean the unit with a dry cloth.
- Keep away from electronic equipment that may cause interference.
- Only use original spares for repairs, otherwise, serious damage and/or dangerous radiation may occur.
- Switch the unit off prior to unplugging it from the mains and/or other equipment. Unplug all leads and cables prior to moving the unit.
- Make sure that the main lead cannot be damaged when people walk on it. Check the mains lead before every use for damages and faults!
- The mains voltage is 220-240Vac/50Hz. Check if the power outlet matches. If you travel, make sure that the mains voltage of the country is suitable for this unit.
- Keep the original packing material so that you can transport the unit in safe conditions.
-  This mark attracts the attention of the user to high voltages that are present inside the housing and that are of sufficient magnitude to cause a shock hazard.
-  This mark attracts the attention of the user to important instructions that are contained in the manual and that he should read and adhere to.

The unit has been certified CE. It is prohibited to make any changes to the unit. They would invalidate the CE certificate and their guarantee!

**NOTE:** To make sure that the unit will function normally, it must be used in rooms with a temperature between 5°C/41°F and 35°C/95°F.

Electric products must not be put into household waste. Please bring them to a recycling center. Ask your local authorities or your dealer about the way to proceed. The specifications are typical. The actual values can slightly change from one unit to the other. Specifications can be changed without prior notice.



Do not attempt to make any repairs yourself. This would invalidate your warranty. Do not make any changes to the unit. This would also invalidate your warranty. The warranty is not applicable in case of accidents or damages caused by inappropriate use or disrespect of the warnings contained in this manual. Power Dynamics cannot be held responsible for personal injuries caused by disrespect of the safety recommendations and warnings. This is also applicable to all damages in whatever form.

## UNPACKING INSTRUCTION

**CAUTION!** Carefully unpack the box upon receipt.

- Check the contents to ensure that all parts are present and have been received in good condition.
- Notify the shipper immediately and retain packaging material if any parts appear damaged from shipping or the package itself shows signs of mishandling.
- Save the package and all packaging materials.
- If the product must be returned, the product must be returned in the original factory box and packaging.
- If the device has been exposed to drastic temperature fluctuation (e.g. after transportation), do not switch it on immediately.

- The rising condensation water might damage your device.
- Leave the device switched off until it has reached room temperature.

## **POWERSUPPLY**

- The label on the back/underside of the product indicates the mains voltage to which it must be connected.
- Check that the mains voltage corresponds to this.
- Any other voltage than the one indicated may cause irreparable damage to the unit.
- The unit must also be connected directly to the mains voltage and no dimmer or adjustable power supply may be used.
- Always connect the device to a protected circuit (circuit breaker or fuse).
- Make sure the device has an appropriate electrical ground to avoid the risk of electrocution or fire.

## **REAR PANEL**

### **1. LED indicators**

Power (illuminated when the power is on)

Signal (illuminated when a signal is registered at the audio input)

Protect (illuminated when there is an unusual operating condition that might damage the audio setup)

### **2. Crossover control (High pass filter)**

A high-pass filter (HPF) is an electronic filter that cuts off signals with a frequency lower than 100 HZ or 150 HZ

### **3. Volume**

Rotate to adjust the volume

### **4. Output**

Balanced parallel XLR output

### **5. Input**

Balanced combi input connector (XLR/jack 6,3 mm)

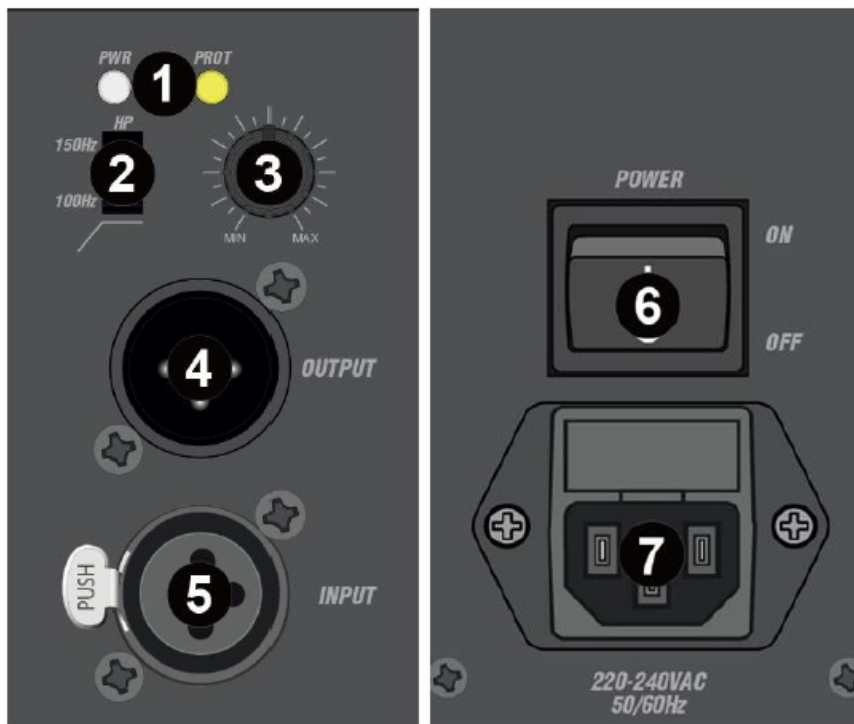
### **6. Power switch**

Switch to turn the device on/off. Before switching the device on, first check all connections and turn the volume control fully down (counterclockwise)

### **7. Power input**

Before connecting the power cord, check if the mains correspond to the voltage indicated on the rating plate on the unit.

Connect the power cord only to a main socket outlet with a protective earthing connection.

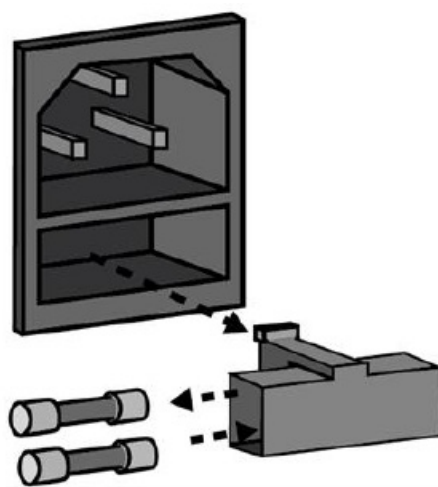


## REPLACING THE FUSE

- If the fuse is defective, replace the fuse with a fuse of the same type and value. Before replacing the fuse, unplug main lead

### Procedure

- **Step 1:** Open the fuse holder on the rear panel with a fitting screwdriver
- **Step 2:** Remove the old fuse from the fuse holder
- **Step 3:** Install the new fuse in the fuse holder
- **Step 4:** Replace the fuse holder in the housing



## TECHNICAL SPECIFICATION

- **Speaker type:** Active (amplified)
- **Output power: Max:** 260W

- **Output power: RMS:** 130W
- **Amplifier type:** Class D
- **Tweeter type:** Dome
- **Diameter tweeter:** 1"
- **Diameter woofer:** 3"
- **Magnet type:** Ferrite
- **SPL max:** 118dB
- **SPL @ 1W/1m:** 95dB
- **IP rating:** IP20
- **Frequency response:** 100Hz – 20.000Hz
- **Impedance:** 8 Ohm
- **Input connections:** 6.3mm Jack, XLR (3-pin)
- **Output connections:** XLR (3-pin)
- **Dimensions (L x W x H):** 495 x 105 x 145mm
- **Weight:** 4,80kg

The specifications are typical. The actual values can slightly change from one unit to the other. Specifications can be changed without prior notice.

The products referred to in this manual is conforming European and UK legislation directives to which they are subject:

#### European Union

- Tronios B.V., Bedrijvenpark Twente Noord 18, 7602KR Almelo, The Netherlands
- 2014/35/EU
- 2014/30/EU
- 2011/65/EC




#### United Kingdom

- Tronios Ltd., 130 Harley Street, London W1G 7JU, United Kingdom
- S.I. 2016:1101
- S.I. 2016:1091
- S.I. 2012:3032



Specifications and design are subject to change without prior notice. [www.tronios.com](http://www.tronios.com) Copyright © 2024 by TRONIOS the Netherlands

## Documents / Resources

	<p><a href="#">Power Dynamics PDCS403A Active Column Speaker</a> [pdf] Instruction Manual 178.595, 178.596, PDCS403A Active Column Speaker, PDCS403A, Active Column Speaker, C olumn Speaker</p>
---	--

## References

- [🌐 Samen zijn we open. Samen staan we sterk. - Stichting Open](#)
- [🌐 Sound & Light distributor - Tronios.com](#)
- [User Manual](#)

### Manuals+. [Privacy Policy](#)

This website is an independent publication and is neither affiliated with nor endorsed by any of the trademark owners. The "Bluetooth®" word mark and logos are registered trademarks owned by Bluetooth SIG, Inc. The "Wi-Fi®" word mark and logos are registered trademarks owned by the Wi-Fi Alliance. Any use of these marks on this website does not imply any affiliation with or endorsement.