

POW TECHNOLOGY M5/UPS Power Inverter



POW TECHNOLOGY M5/UPS Power Inverter Installation Guide

[Home](#) » [Pow Technology](#) » POW TECHNOLOGY M5/UPS Power Inverter Installation Guide 

Contents

- [1 POW TECHNOLOGY M5/UPS Power Inverter](#)
- [2 Specifications](#)
- [3 Product Usage Instructions](#)
- [4 Contact](#)
- [5 FAQ](#)
- [6 Documents / Resources](#)
 - [6.1 References](#)
- [7 Related Posts](#)

POW TECHNOLOGY

POW TECHNOLOGY M5/UPS Power Inverter



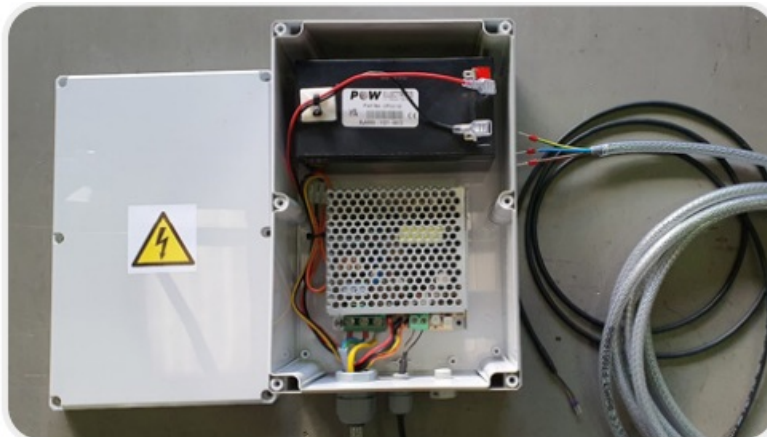
Specifications

- Model: M5/UPS
- Power Source: 110/230 V ac
- Communication: MetronView
- IP Rating: IP67
- Sensor Compatibility: 0-10 Volt DC, 4-20mA, Volt free contacts

Product Usage Instructions

Unpack & Open Up the Metron5

Place unit on a flat surface and loosen the 2 nylon screws in the bottom corners of the Metron5 and 6 screws around the UPS enclosure to open. Allen key required.



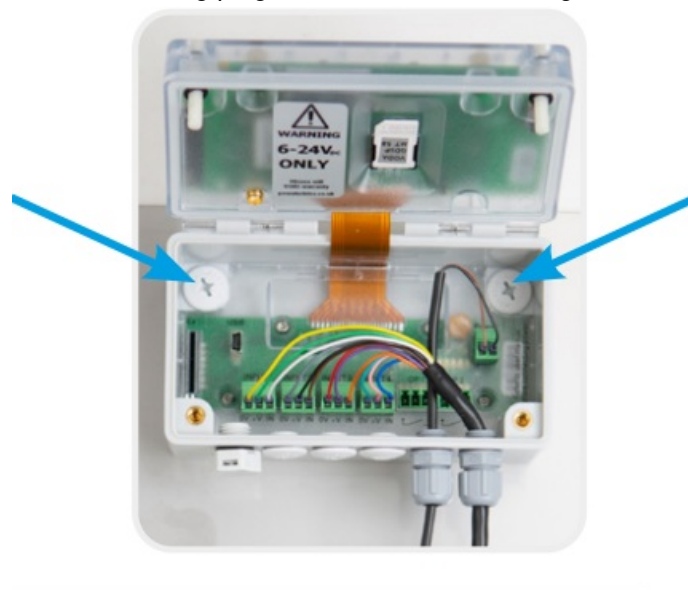
Find a Suitable Place to Mount the Unit

Ideally a flat surface such as a wall/ DIN railing/ \Unistrut railing. Avoid mounting inside metal cabinets or \underground (could reduce signal). We supply a 2m cable to connect the UPS to the Metron5. It is OK to trim to suit the installation.



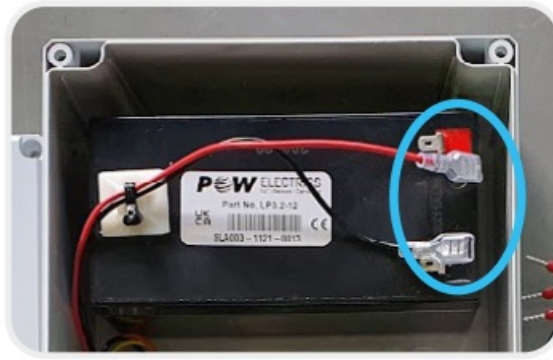
Mount the Metron5 & UPS

Use pre-drilled mounting holes to fix UPS and Metron5 to flat surface. Leave space between for inputs. Fit appropriate M12 glands and ensure blanking plugs are fitted over unused glands.



Connect the Battery

Remove the white plastic cover from the battery terminals (lower box). Use the black and red wires from the UPS (upper) and slide on to connect to the battery terminals. Maintain polarity: Black to black (-). Red to red (+).



Connect to Mains

Connect supplied SY cable (5m) to a source of 110/230 V ac. Provide fused spur.

- Blue: Neutral
- Brown: Live
- Green/Yellow: Earth



Connect the Sensor(s)

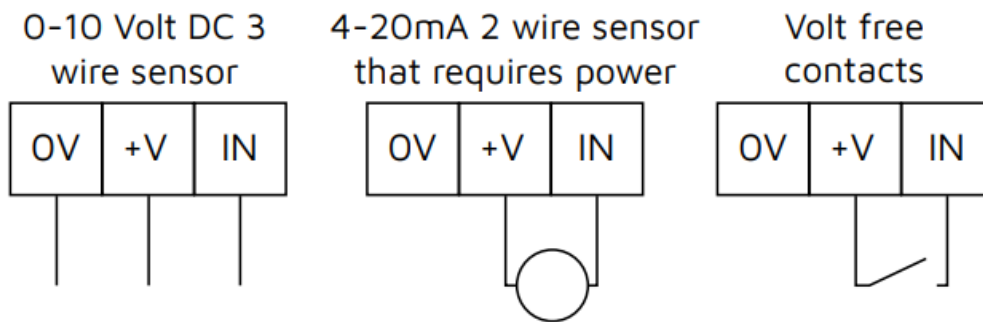
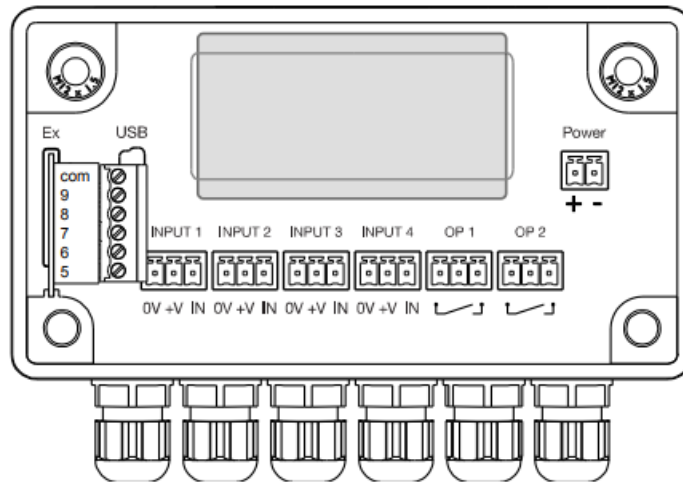
Run the sensor cable(s) through the lower unit's glands.

Unplug the green connector(s) and wire as required.

Plug the connector(s) back into the correct input channel and tighten the gland. Ensure the cable is through the gland.

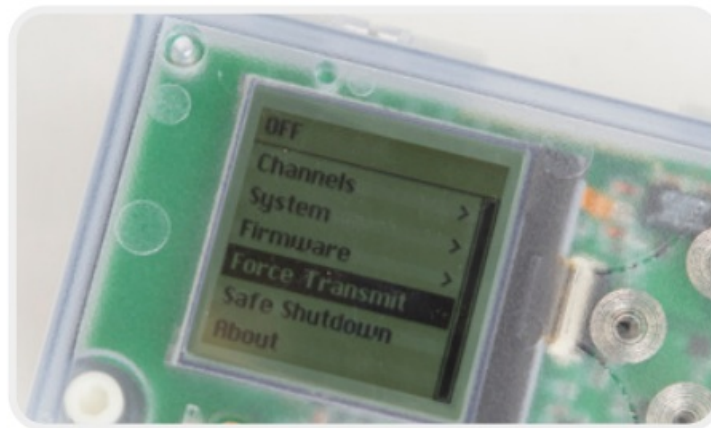
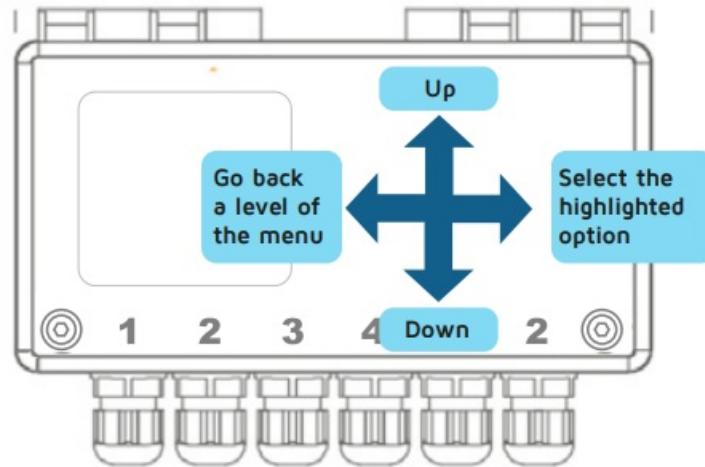
Reattach all lids and take care to tighten screws to ensure a waterproof IP67 rating is maintained.

Do not overtighten the screws or glands so as to cause damage.



Navigate the Metron5

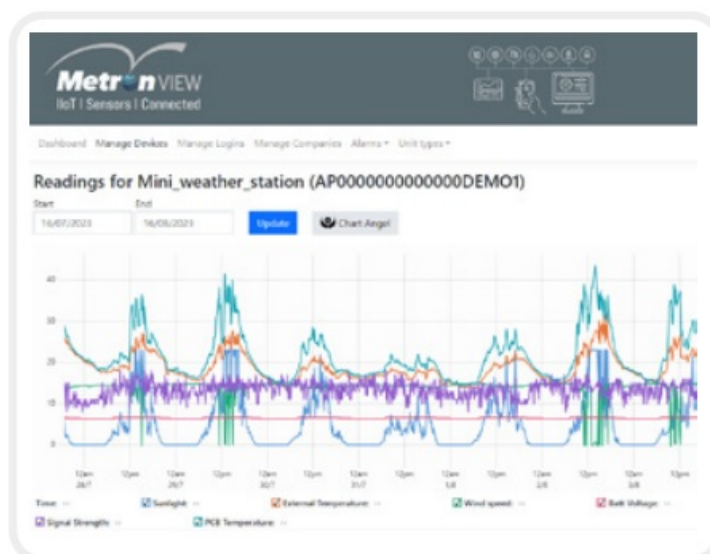
Press any button to wake the Metron5. Press left to cycle channels for immediate reading (config. dependent) or enter a PIN (1234) and press right after 4th digit to enter the homepage. Move down to Force Transmit and right to select. Watch the progress bar and wait for the unit to transmit. Once complete, data can be viewed on MetronView. The unit will countdown for 45 seconds, then enter Run Mode. The screen will turn off. For live channel readings, channels can be selected from the menu by pressing right on Channels and Read Now.



View Data

Visit: 2020.metronview.com

Login credentials will be sent by email. Once logged in, a summary of the units will be visible. Click view to the left of the device's name to see the historical data.



Programming

Units can be remotely programmed from MetronView. It is possible to change how often readings are taken & sent, alter scaling and alarm thresholds for each input channel and much more. To make changes contact PowTechnology support. The configuration will be held on the server and downloaded to the device when it next

communicates. Select 'Force transmit' rather than waiting for the next time the device transmits in order to reconfigure sooner.


Contact

- Phone: +44 (0) 1827 310666
- Email: support@powtechnology.com

FAQ

- **Q: Can I mount the unit underground?**
 - A: It is not recommended as it could reduce signal quality.
- **Q: How do I access live channel readings?**
 - A: Press right on Channels and Read Now from the menu.
- **Q: How can I reconfigure the device sooner?**
 - A: Select 'Force transmit' to initiate reconfiguration rather than waiting for the next scheduled transmission.

Documents / Resources

	<p>POW TECHNOLOGY M5/UPS Power Inverter [pdf] Installation Guide M5, M5 UPS Power Inverter, M5 UPS, Power Inverter, Inverter</p>
--	--

References

- [Metron VIEW](#)
- [User Manual](#)

[Manuals+.](#) [Privacy Policy](#)

This website is an independent publication and is neither affiliated with nor endorsed by any of the trademark owners. The "Bluetooth®" word mark and logos are registered trademarks owned by Bluetooth SIG, Inc. The "Wi-Fi®" word mark and logos are registered trademarks owned by the Wi-Fi Alliance. Any use of these marks on this website does not imply any affiliation with or endorsement.