



## POTTER SB24 SERIES Select-A-Strobe Owner's Manual

[Home](#) » [POTTER](#) » POTTER SB24 SERIES Select-A-Strobe Owner's Manual 



SB24 SERIES  
SELECT-A-STROBE  
Owner's Manual



## Contents

- [1 SB24 SERIES Select-A-Strobe](#)
- [2 Ordering Information](#)
- [3 Engineering Specifications](#)
- [4 Wiring Diagram](#)
- [5 Light Output](#)
- [6 Mounting](#)
- [7 Installation](#)
- [8 Documents / Resources](#)
  - [8.1 References](#)
- [9 Related Posts](#)

## SB24 SERIES Select-A-Strobe

- Strobe with two field selectable settings 15/30 and 75/110
- Designed to meet or exceed NFPA/ANSI standards and ADA accessibility guidelines
- Polarized models with wide listed voltage ranges using filtered DC or unfiltered FWR input voltage
- Flying leads for in/out wiring supervision
- All models mount to 4" square back box
- Available in 24VDC polarized models
- Strobe synchronization requires an Amseco SMD10-3A (daisy chain) sync module
- Viewable candela setting
- Indoor/outdoor

Amseco's newly designed UL1971 listed Select-A-Strobe Series SB24-153075 and SB24-75110 are designed to provide visual signaling devices for fire protective systems. They meet UL 1638 standard for visual signaling devices for the hearing impaired, ADA requirements, ANSI and NFPA standards.

The light output can be selected by a selector jumper (white) located on the front panel. Model SB24-153075 can be set for 15cd (jumper not cut) or 30cd (jumper cut). The SB24-75110 can be set at 75cd (jumper not cut) or 110cd (jumper cut).

In those instances where two or more Amseco chimes, horns, and/or strobes are connected and require a synchronized code 3 temporal pattern and/or strobe flash, the Amseco SMD10-3A Sync Module (daisy chain) may be used to meet the required codes.

## Ordering Information

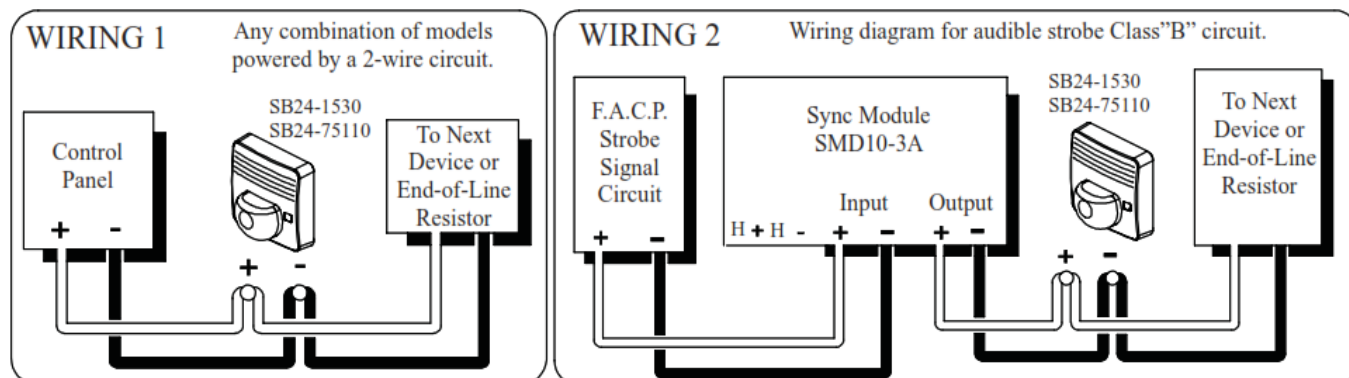
Model Number	Stock Number	Rated Voltage (VDC)	Strobe Output (cd )	Sync Module
SB24-1530R	4560036	24	15 or 30	SMD10-3A
SB24-75110R	4560037	24	75 or 110	SMD10-3A

## Engineering Specifications

The visual alarm indicating appliance shall be Amseco model SB24 Strobe Series or equivalent device. The strobe shall be listed under UL 1971 standard for signaling devices for the hearing impaired and shall be approved for fire protective service. The candela output shall be field selectable, having a dual setting of 15/75 cd or 30/120 cd output. The signaling strobe shall operate on 24V DC from a non-coded regulated DC supply or full-wave rectified, unfiltered supply. It is designed to produce a signal flash of one flash per second with

continuously applied minimum voltage. The strobe shall be capable of wall or ceiling mounting to an electrical back box. Visual signaling devices shall be mounted to 80" above the highest floor point or 6" below ceiling, whichever is lowest. They are to be installed as per plans and specifications.

## Wiring Diagram

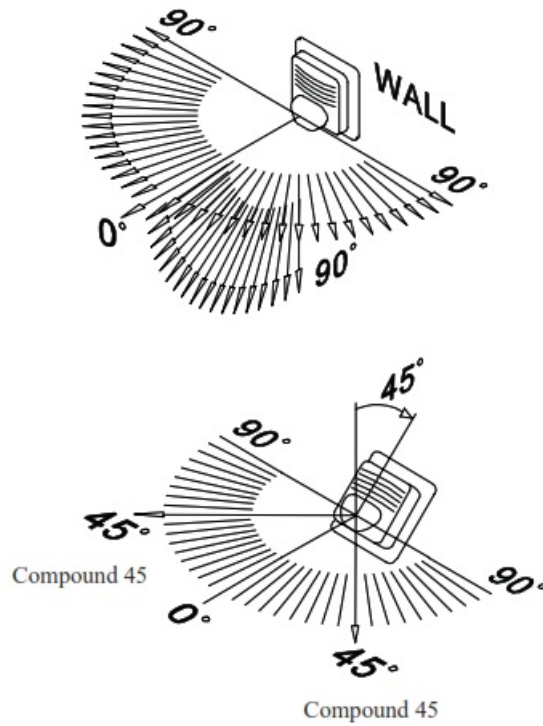


Refer to the SMD10-3A Sync Module instruction manual for Class "A" wiring or other application diagrams.

## Light Output

UL Required Minimum Light Output (cd)

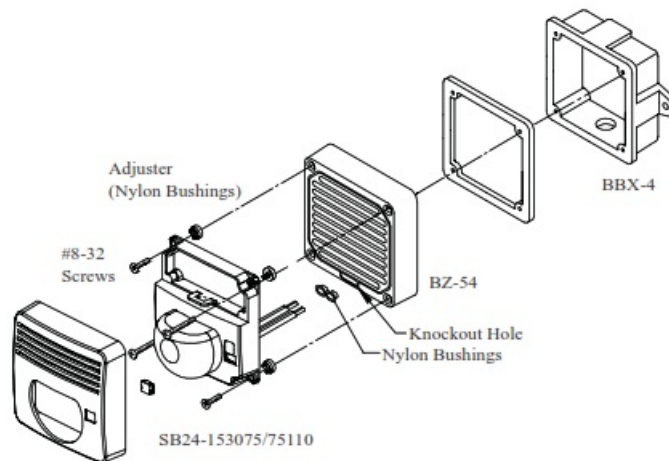
	Wall Mount – Horizontal				Wall Mount – Vertical			
Degrees	15 cd	30cd	75cd	110cd	15 cd	30cd	75cd	110cd
0	75.00	75.00	75.00	110.00	75.00	75.00	75.00	110.00
5-25	13.50	27.00	67.50	99.00	13.50	27.00	67.50	99.00
30	11.	22.50	56.	82.50	13.50	27.00	67.50	99.00
35	11.	22.50	56.	82.50	10.	19.50	49.	71.50
40	11.	22.50	56.	82.50	6.90	13.80	34.50	50.60
45	11.	22.50	56.	82.50	5.10	10.20	25.50	37.40
50	8.	16.50	41.	60.50	4.	8.10	20.	29.70
55	7.	13.50	34.	49.50	3.30	6.60	16.50	24.20
60	6.00	12.00	30.00	44.00	2.70	5.40	13.50	19.80
65	5.	10.50	26.	38.50	2.40	4.80	12.00	17.60
70	5.	10.50	26.	38.50	2.	4.50	11.	16.50
75	4.50	9.00	22.50	33.00	2.	3.90	10.	14.30
80	4.50	9.00	22.50	33.00	1.80	3.60	9.00	13.20
85-90	4.	7.50	19.	27.00	1.80	3.60	9.00	13.20
Compound 45	3.60	7.20	18.00	26.40	—	—	—	—



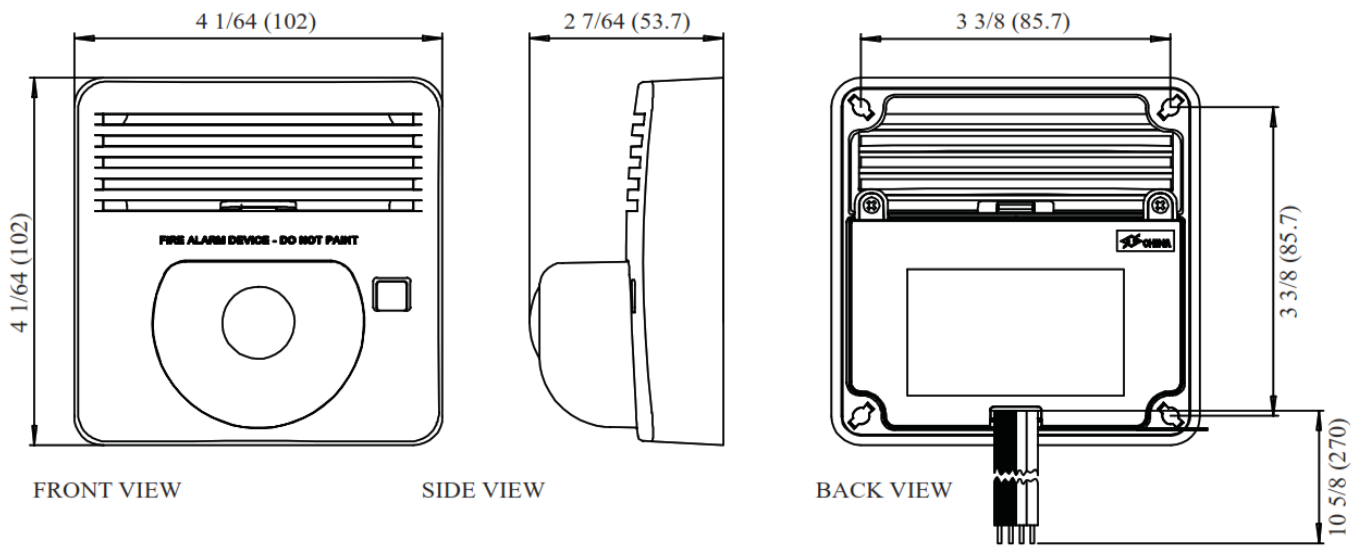
## Mounting

For semi-flush mounting in combination with Amseco BZ-54 Horn:

1. Mount the SB24-153075/75110 to the horn with provided accessory screws (#8-32 x 9/16" 14mm) by passing lead wires of the SB24-153075/75110 through the nylon bushing wire hole of the horn.
2. Connect both lead wires of SB24-153075/75110 and BZ-54 to the power supply from the control panel. Mount them together to the back box (BBX-4 with the screws provided) into the strobe light mounting holes.



**Dimensions: inches (mm)**



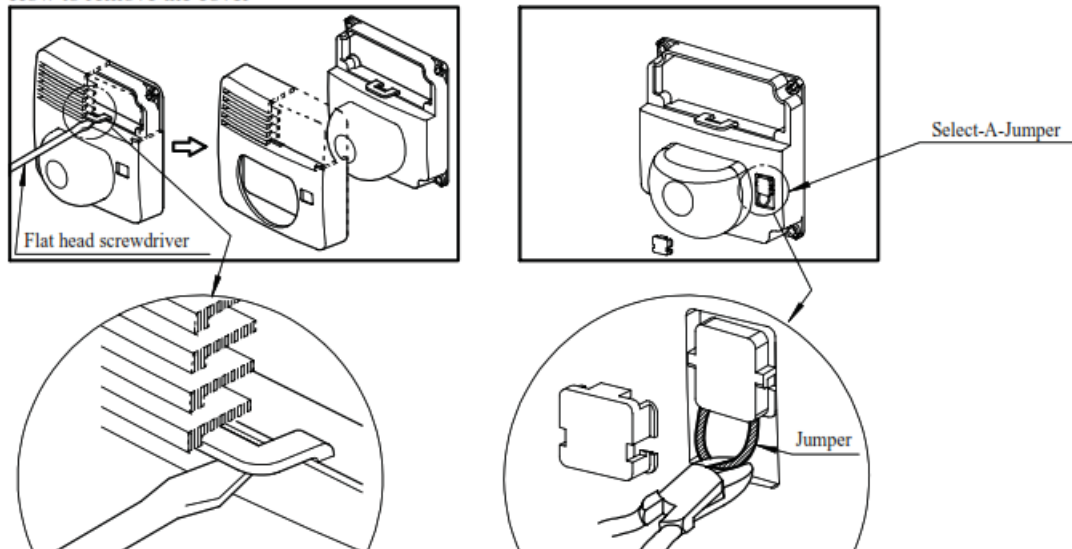
## Installation

For stand alone installation:


1. Locate the locking tab at the center of the lowest louver on the front cover.
2. Insert a small flat head screwdriver to the lift tab in order to release the cover from the unit.

	SB24-153075	SB24-751
Not Cut	15cd	75cd
Cut	30cd	110cd

### How to remove the cover



## Documents / Resources

	<p><a href="#">POTTER SB24 SERIES Select-A-Strobe</a> [pdf] Owner's Manual SB24 SERIES Select-A-Strobe, SB24 SERIES, Select-A-Strobe, A-Strobe, Strobe</p>
---	--

## References

-  [Fire Alarm Resources | Download fire alarm documents](#)