



POTTER PAM-1 Multi Voltage Relay Module Owner's Manual

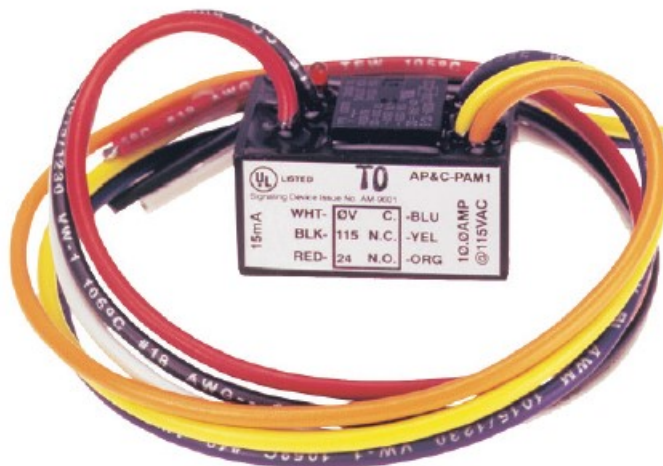
[Home](#) » [POTTER](#) » POTTER PAM-1 Multi Voltage Relay Module Owner's Manual 

Contents

- [1 POTTER PAM-1 Multi Voltage Relay Module](#)
- [2 Features](#)
- [3 Description](#)
- [4 Installation](#)
- [5 Technical Specifications](#)
- [6 Ordering Information](#)
- [7 Documents / Resources](#)
- [8 Related Posts](#)

POTTER

POTTER PAM-1 Multi Voltage Relay Module



Features

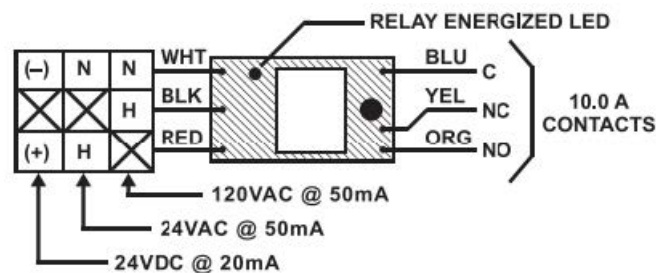
- Single SPDT relay with LED
- Double-sided adhesive tape
- Mounting screw
- Six 12" "flying" leads 18 AWG
- 6 wire-nuts

Description

The PAM-1 Relay provides 10.0 A form “C” contacts. The relay may be energized by one of three input voltages: 24VDC, 24VAC, or 120VAC. The input voltages are polarity-sensitive and diodeprotected. PAM-1 Relays contain a red LED which indicates when the relay coil is energized.

The PAM-SD may be mounted by using the double-sided adhesive tape, the self-drilling screw, or loosely placed in an electrical backbox. PAM Relays are ideal for applications where remote relays are required for fire alarm control or status feedback. They are only suitable for use within UL864 applications and installed in accordance with NFPA 70® and NFPA 72® .

Installation



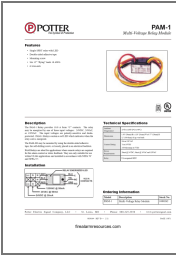
Technical Specifications

Ambient Temperature	32°F to 120°F (0°C to 49°C)
Dimensions	1.50" (38mm) H x 1.20" (31mm) W x 0.77" (20mm) D 12" (304.8mm) 18 ga. wire leads
Contact Rating	10A at 120 VAC 7A at 24VDC 250 Microamps at 5VDC
Power Requirements	20mA @ 24VDC, 50mA @ 24VAC and 120VAC
Relay	UL recognized SPDT

Ordering Information

Model	Description	Stock No.
PAM-1	Multi-Voltage Relay Module	1000262

Documents / Resources



[POTTER PAM-1 Multi Voltage Relay Module](#) [pdf] Owner's Manual

PAM-1 Multi Voltage Relay Module, PAM-1, Multi Voltage Relay Module, Relay Module

[Manuals+](#)