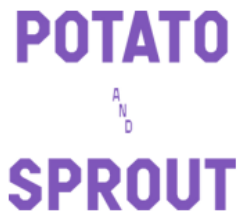


POTATO and SPROUT Kai Side Table Instruction Manual



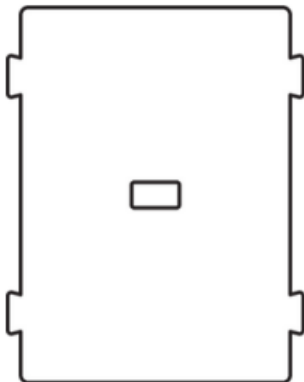
Contents

- [1 Assembly instructions](#)
- [2 THE SIDE TABLE](#)
- [3 Documents / Resources](#)
 - [3.1 References](#)
- [4 Related Posts](#)

Assembly instructions

THE SIDE TABLE

You're just moments from admiring your new table.
No tools, screws, extra bits or bolts required.



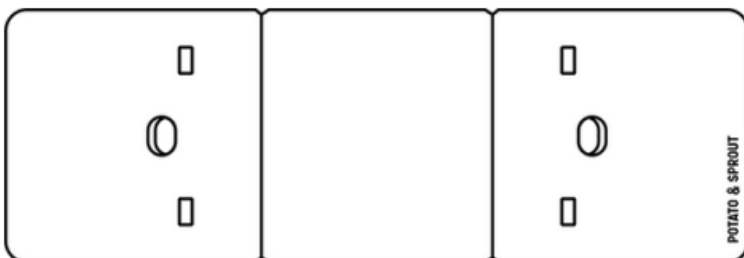
1x Shelf



1x Spanner



1x Brace

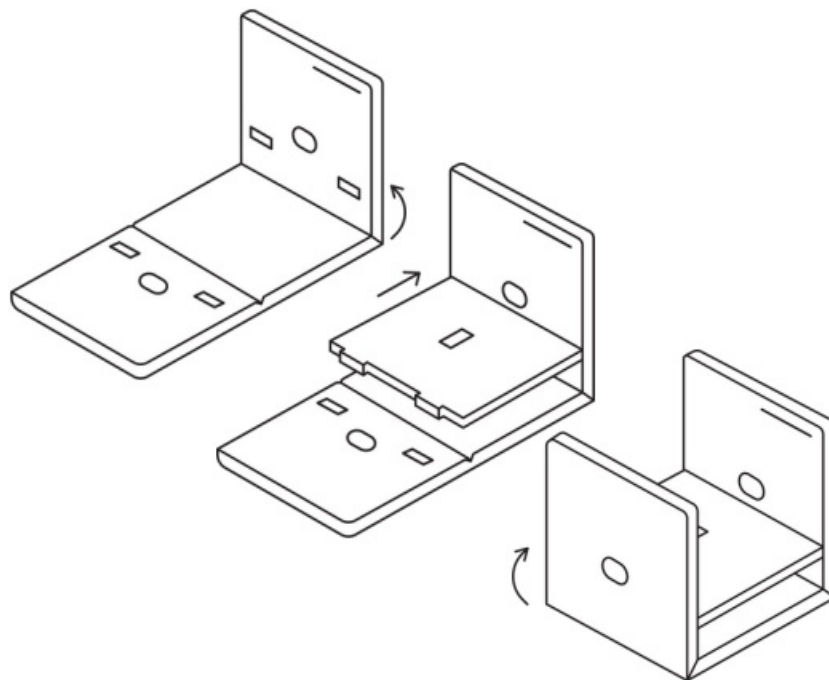


1x Base

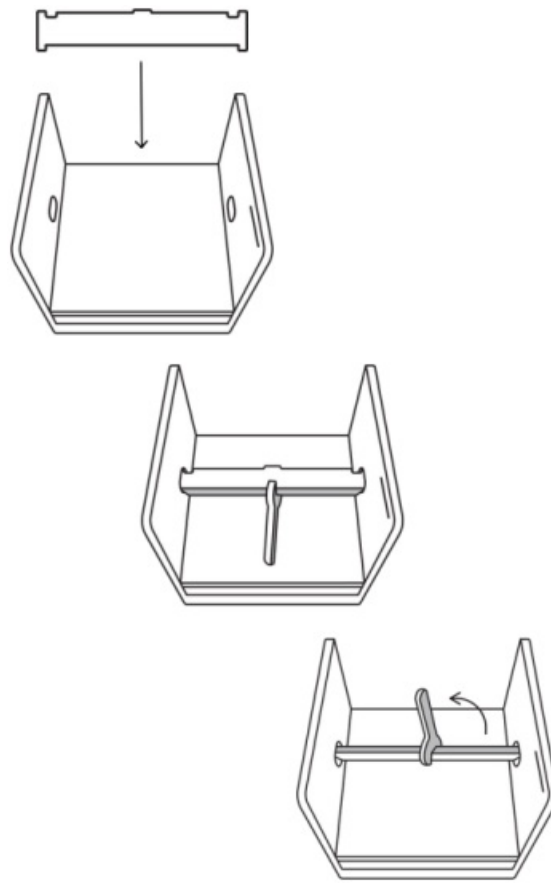
01 Quick inventory check, shouldn't take long 😊



02 Put the cardboard packaging (or a towel) on a flat surface. Place the base on top. The grooves and logo should be facing up.



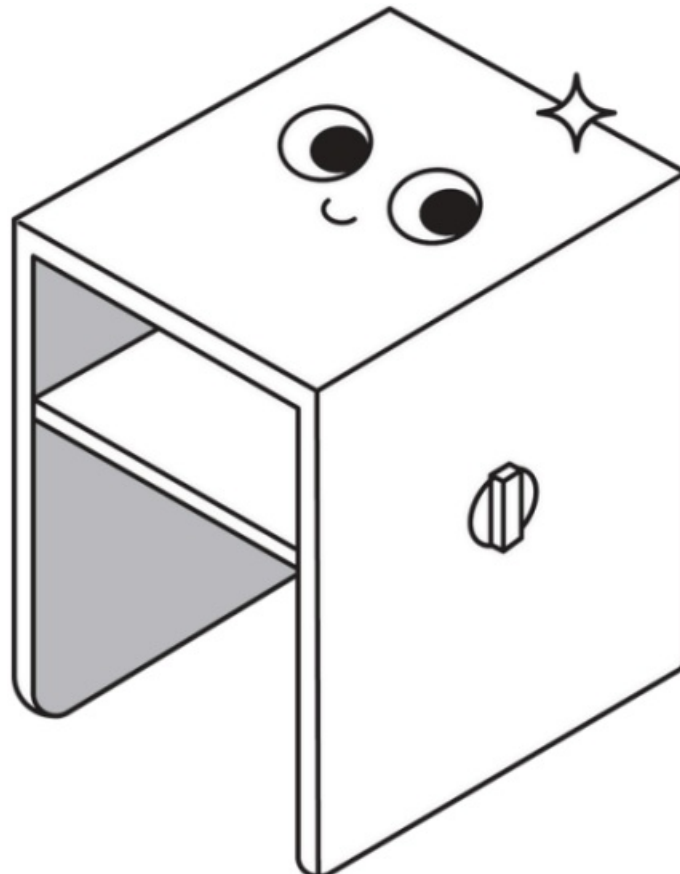
03 Fold one side of the base inward at a right angle. Grab the shelf, and with the notch facing up, slot the teeth on one of the sides of the shelf into the notches on the wing of the base, repeat with the other side and hold together ahead of step 4.



04 Grab the brace, and pop each end through the circular holes on the base wings. The next step is easiest if the tooth is facing away from you.

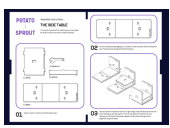
Use the spanner to twist the brace into place so the tooth snaps into the rectangular notch on the shelf.

Finito – now your handy spanner can go on display (until you need to run these steps in reverse)



Feeling proud?
Share it @potatoandsprout

Documents / Resources



[POTATO and SPROUT Kai Side Table](#) [pdf] Instruction Manual
DAGTDSFr7zk, BAGB0IFRJtg, Kai Side Table, Side Table, Table

References

- [User Manual](#)

Manuals+, Privacy Policy

This website is an independent publication and is neither affiliated with nor endorsed by any of the trademark owners. The "Bluetooth®" word mark and logos are registered trademarks owned by Bluetooth SIG, Inc. The "Wi-Fi®" word mark and logos are registered trademarks owned by the Wi-Fi Alliance. Any use of these marks on this website does not imply any affiliation with or endorsement.