



POSITAL OCD-EM00B Absolute Ixarc Magnetic Rotary Encoder User Guide

[Home](#) » [POSITAL](#) » POSITAL OCD-EM00B Absolute Ixarc Magnetic Rotary Encoder User Guide 



POSITAL

Modbus Encoder
Parametrization via Command Lines



 E.g.: OCD-EM00B-0013-S06V-PRM

Contents

- 1 Context
- 2 Download Tool from our website
- 3 Go into the TCP Client folder
- 4 Modify the batch file (if necessary)
- 5 Start the batch file
- 6 Type in the command line
- 7 Documents / Resources
- 7.1 References

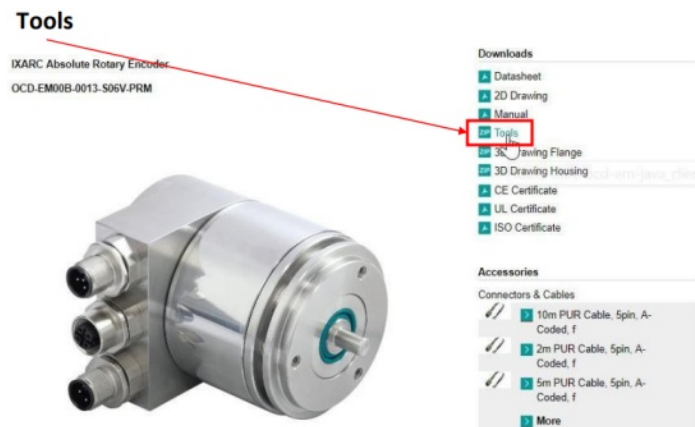
Context

This document describes how to configure a Modbus/TCP encoder by using command lines.

This is particularly useful in case of Java related issues, e.g. when the message “Exception while opening stream with IP...” is displayed.

Download Tool from our website

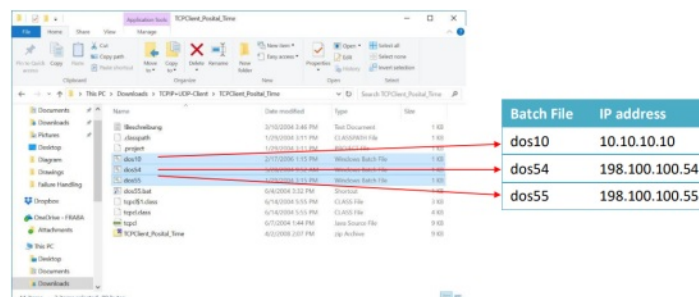
From any Modbus/TCP [product page](#), download the web applet by clicking on Tools under the Downloads section.



Go into the TCP Client folder

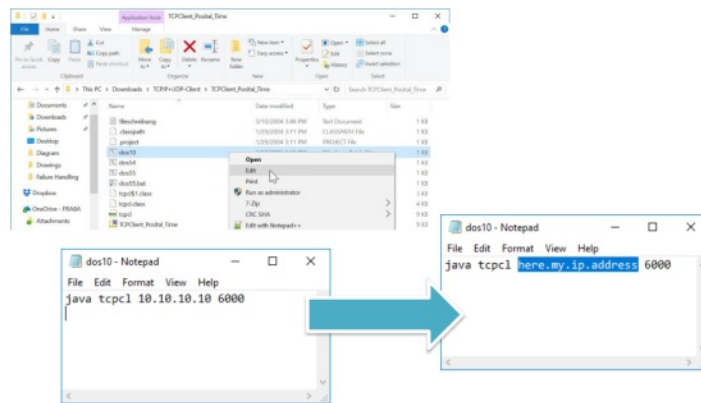
After extracting the folder, go under the TCPClient_Posital_Time folder.

You will find 3 Batch Files, to be used based on the IP address of the encoder:



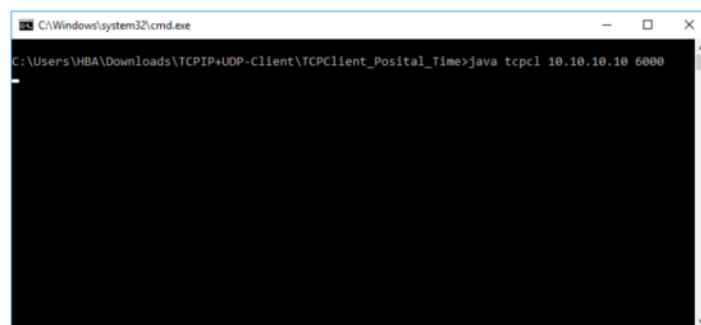
Modify the batch file (if necessary)

If the encoder has a different IP address, open any Batch File (right click + Edit) and replace the IP address in it with the one of the encoder.



Start the batch file

Double click on the Batch File (the one with the correct IP address).
A command window will open.



Note:

It can happen that you see lines constantly appearing, reading the position value of the sensor.
It is not a problem: it won't prevent you to perform the further steps.

Type in the command line



Inside the commande window, type in your command line.

The format to use is: Variable=Value

E.g. CountingDir=CCW

You can find the list of Variables and Values in our [online manual](#), 5.6.2 Variables, page 18.

Documents / Resources

 <p>Modbus Encoder Parametrization via Command Lines</p>  <p>CC-000-0000-0013-0000-PRM</p>	<p>POSITAL OCD-EM00B Absolute Ixarc Magnetic Rotary Encoder [pdf] User Guide OCD-EM00B-0013-S06V-PRM, OCD-EM00B Absolute Ixarc Magnetic Rotary Encoder, OCD-E M00B, Absolute Ixarc Magnetic Rotary Encoder, Ixarc Magnetic Rotary Encoder, Magnetic Rotar y Encoder, Rotary Encoder</p>
--	--

References

- [User Manual](#)